

DUKE ENERGY

CALL K.U.P.I.
2 BUSINESS DAY BEFORE YOU DIG
1-800-752-6007

GAS DEPARTMENT
DUKE ENERGY



SOUTHEAST DISTRICT



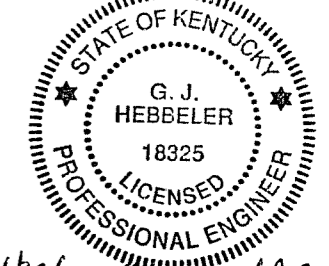
VICINITY MAP
N.T.S

AUTHORIZED
January 31, 2008
CONSTRUCTION
DRAWING

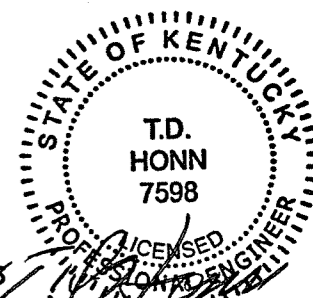
MAIN ABANDONMENT		
CIBS	1907	875'
CIBS	1907	830'
CIBS	1907	875'
CIC	1907	100'
CIBS	1907	69'
CIC	1935	5'
CIBS	1907	159'
CIBS	1907	131'
CIC	1907	720'
CIBS	1907	6'
CIMJ	1958	663'
CIC	1936	170'
CIC	1936	70'
CIMJ	1959	8'
SWPC	1988	4'
CIBS	1907	7'
CIBS	1907	720'
CIBS	1907	1'
ST	1907	110'
ST	1907	130'
CIBS	1907	156'
CIC	1907	95'
CIC	1907	356'
SWPC	1989	4'
ST	1989	2'
SWPC	1981	4'

MAIN ABANDONMENT		
CIMJ	1958	255'
CIMJ	1959	7'
CIMJ	1959	11'
CIBS	1907	830'
CIBS	1907	155'
ST	1907	401'
CIBS	1907	530'
CIBS	1907	475'
CIBS	1907	55'
SWPC	1988	42'
CIC	1936	532'
CIC	1907	7'
CIBS	1907	3'
CIBS	1907	3'
CIC	1936	7'
SWPC	1993	3'
CIC	1907	14'
CIBS	1907	38'
CIBS	1907	17'
S	1907	20'
CIBS	1907	7'
SWPC	1988	2'
CIMJ	1959	17'
SPCC	1981	4'
CIC	1936	831'
CIMJ	1956	663'
CIMJ	1958	2'

CONTACT GAS SYSTEMS OPERATIONS SUPERVISOR PRIOR TO STARTING JOB TO VERIFY GAS FLOW
CONSTRUCTION NOTES:
1) CONTACT PRESSURE SUPERVISOR FOR RECONNECTION OF FULL LINE



4/29/08 Gary J. Hebbeler



4/29/08 T.D. Honn

RECEIVED
05 2008
GAS SERVICE
COMMISSION

SYSTEM OPERATION SUPERVISOR VALVES AND NUMBERS REVIEWED

REVIEWED BY: _____
DATE: _____

VALVES THAT HAVE BEEN ABANDONED AND BOX REMOVED

WELDING PROCEDURE(S) REQUIRED	PIPE INSTALLED ON JOB					PERMIT(S) REQUIRED
	SIZE	KIND	WALL THICKNESS	EST. QUANTITIES	ACTUAL QUANTITIES	
SPEC. # _____	2"	STEEL	.154	97'		City of Newport
SPEC. # _____	4"	STEEL	.188	791'		Northern Kentucky Water District
SPEC. # _____	6"	STEEL	.188	388'		Northern Kentucky Sanitation District 1
SPEC. # _____	8"	STEEL	.188	52'		KYDOT
SPEC. # _____	2"	PLASTIC	.216	797'		
	3"	PLASTIC	.302	9'		
	4"	PLASTIC	.395	1,686'		
	6"	PLASTIC	.491	808'		
	8"	PLASTIC	.639	1,229'		
	12"	PLASTIC		291'		
	TOTAL ACTUAL INSTALLED					

DESIGN REVIEW OF COMPLETED CONSTRUCTION JOB	CORROSION ENGINEERING	TEST CONN. PER STANDARD 7.7.1
SPONSOR _____ DATE _____	APPR. BY: _____ COATING TYPE _____ INSPECTION: VISUAL <input type="checkbox"/> JECP <input type="checkbox"/> TYPE PATCH MATERIAL _____	NO PROPOSED _____ NO INSTALLED _____ NO TESTED OK (P/S INDICATOR) _____
FIELD CHANGE REQUEST DOCUMENT REQUIRED: YES <input type="checkbox"/> NO <input type="checkbox"/>	CONDITION OF PIPE COATING WHEN GOOD <input type="checkbox"/> FAIR <input type="checkbox"/> POOR <input type="checkbox"/>	PLASTIC SEPARATIONS INSTALLED <input type="checkbox"/>
TRANSMISSION DESIGN DOCUMENT REQUIRED: YES <input type="checkbox"/> NO <input type="checkbox"/>	INSULATION CHECKED <input type="checkbox"/>	CONTINUITY OF COUPLINGS CHECKED <input type="checkbox"/>
	NO CHECKED _____	CASING CHECKED FOR SHORT <input type="checkbox"/>

FIELD PRESSURE TEST	SUPERVISOR BLOCK
ALL PIPELINES REQUIRED TESTING BEFORE PLACING INTO SERVICE. PRESSURE CHARTS AND FORMS SHOULD BE FORWARDED TO GAS ENGINEERING AND PLANNING	SUPERVISOR OR CONTRACTOR _____ RECORDED BY _____
REQUIRED TEST PRESSURE RANGE: MIN. 90 PSIG TO MAX. 100 PSIG	DATE STARTED _____ DATE PLACED IN SERVICE _____
HOURS _____ MEDIUM _____	DATE COMPLETED _____ PERMIT NO. _____
TESTED BY: _____ DATE _____	

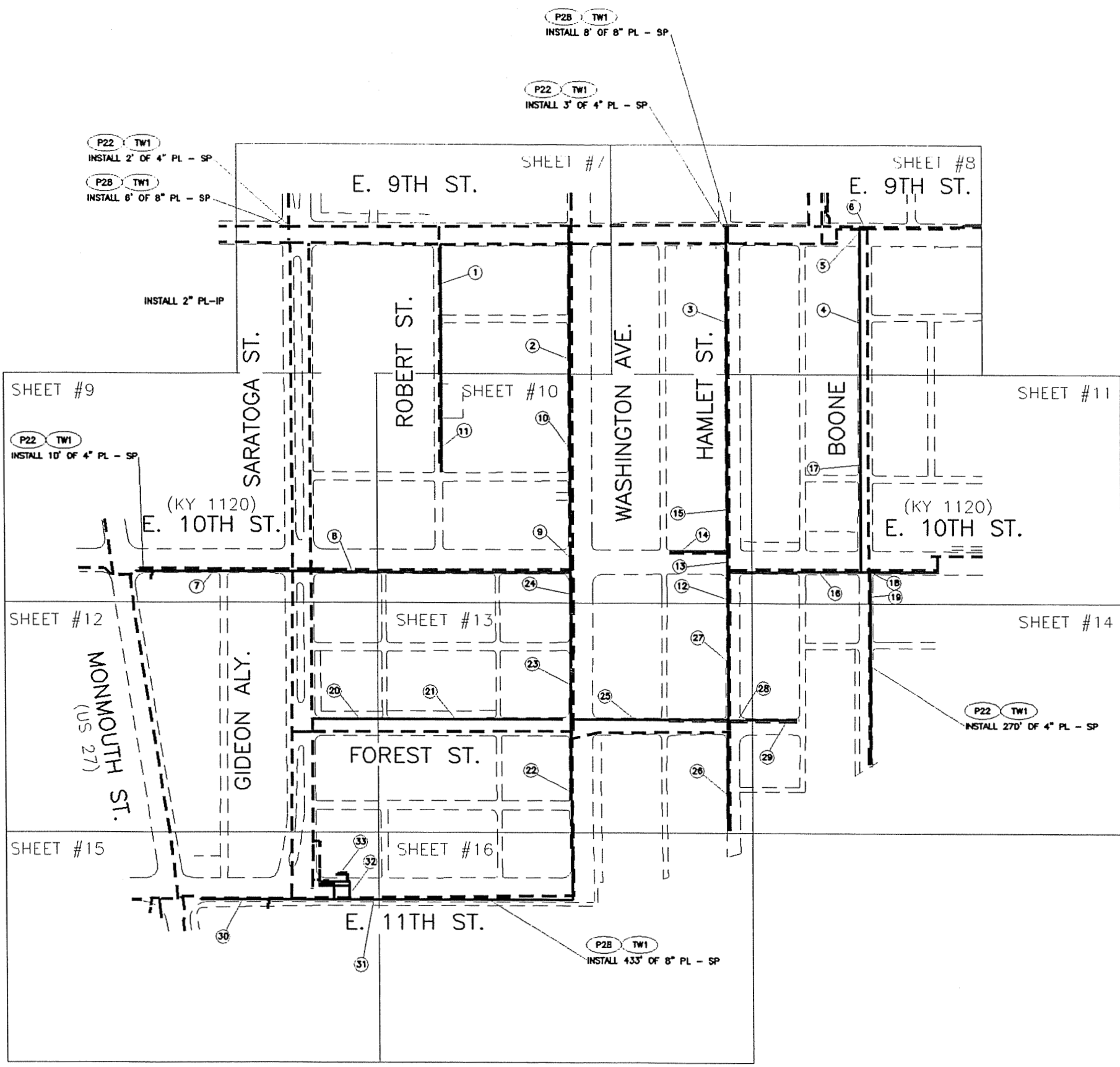
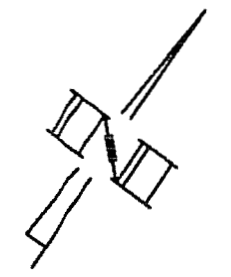
UTILITY LOCATION CONTACTS
TELEPHONE: 513-533-3154
ELECTRIC: 513-421-9500
SAN. SEWER: 859-578-7460
STORM SEWER: 859-578-7460
WATER: 859-441-0482
CABLE T.V.: 859-431-0300
MUNICIPALITY: 859-859-3666

GAS CONTACTS
CONSTRUCTION: D WESTENBURG (W): 513-287-2588
ENGINEERING SPONSOR: D BRODBECK (W): 513-287-1001 (C): 513-659-1450

CPCN Filing
April, 2008
Module 382

INSTALLATION	WORKCODES	W. O. #	MOD 382 MAIN REPLACEMENT NEWPORT, CAMPBELL CO., KY	DRAWN	EMS	6-04-07
ABANDONMENT	P0883827	C9800		CHECKED	BNP	6-04-07
RENEW SERVICE M-C	MC0883827			APPROVED	BNP	6-04-07
RENEW SERVICE C-M	CM0883827	C9800		CLOSED BY		
RELOCATE METER	CIBS01MM	C9800		EST. FOOTAGE		6.148'
MAP NO S 0 1 E 0 1 - 1 8			DRAWING NO 0 8 - 8 3 8 2 - 7	PASSPORT#		904094

REVISIONS

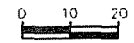


- (P19 TW1) 1) INSTALL 216' OF 2" PL - IP
- (P27 TW1) 2) INSTALL 247' OF 6" PL - SP
- (P22 TW1) 3) INSTALL 247' OF 4" PL - SP
- (P22 TW1) 4) INSTALL 247' OF 4" PL - SP
- (P22 TW1) 5) INSTALL 3' OF 4" PL - SP
- (P22 TW1) 6) INSTALL 16' OF 8" PL - SP
- (P22 TW1) 7) INSTALL 360' OF 4" PL - SP
- (P1) 8) INSTALL 318' OF 4" SWPC - SP
- (P4) 9) INSTALL 66' OF 6" SWPC - SP
- (P27 TW1) 10) INSTALL 280' OF 6" PL - SP
- (P19 TW1) 11) INSTALL 188' OF 2" PL - SP
- (P28 TW1) 12) INSTALL 36' OF 8" PL - SP
- (P5) 13) INSTALL 52' OF 8" SWPC - SP
- (P1) 14) INSTALL 97' OF 2" SWPC - SP
- (P3) 15) INSTALL 15' OF 4" SWPC - SP
- (P4) 16) INSTALL 319' OF 6" SWPC - SP
- (P22 TW1) 17) INSTALL 380' OF 4" PL - SP
- (P5) 18) INSTALL 15' OF 4" SWPC - SP
- (P22 TW1) 19) INSTALL 34' OF 4" PL - SP
- (P18 TW1) 20) INSTALL 108' OF 2" PL - SP
- (P19 TW1) 21) INSTALL 304' OF 2" PL - SP
- (P28 TW1) 22) INSTALL 188' OF 8" PL - SP
- (P27 TW1) 23) INSTALL 194' OF 8" PL - SP
- (P7 TW1) 24) INSTALL 34' OF 6" PE - SP
- (P28 TW1) 25) INSTALL 252' OF 8" PL - SP
- (P22 TW1) 26) INSTALL 188' OF 4" PL - SP
- (P28 TW1) 27) INSTALL 198' OF 8" PL - SP
- (P22 TW1) 28) INSTALL 38' OF 4" PL - SP
- (P22 TW1) 29) INSTALL 78' OF 4" PL - SP
- (P38 TW1) 30) INSTALL 255' OF 12" PL - SP
- (P28 TW1) 31) INSTALL 44' OF 8" PL - SP
- (P38 TW1) 32) INSTALL 31' OF 12" PL - SP
- (P33 TW1) 33) INSTALL 36' OF 12" PL - SP

PIPE SHEET

ALL PIPE TO BE DIRECT BURY UNLESS NOTED.
DETAILS MAY HAVE SMALL AMOUNTS OF FOOTAGE LISTED.

REVISIONS



** GAS MAIN REPLACEMENT **															
** SERVICE CHECK LIST **															
(SUBJECT TO STANDARD FIELD CHECK)															
CO#	ID#	HSE#	STREET NAME	SIZE	KIND	LENGTH	DIST	DIR	NEAR HOUSE			JCF	COMMENTS		
									METER	5' X 5'	4' X 2'			4' X 2'	
									LOC	SDWK	DWAY	PAV	SOD	OUT	
7	50174	1001	WASHINGTON	1 1/4	S	33	8	SH							
7	49204	1002	WASHINGTON	1 1/4	PL	9	31	EW							
7	50175	1003	WASHINGTON	1 1/2	S	34	9	NS							
7	50176	1004	WASHINGTON	1	PL	9	1	SH							
7	50177	1005	WASHINGTON	1	PL	37	3	NS							
7	50178	1009	WASHINGTON	1	PL	35	7	SS							
7	50179	1010	WASHINGTON	1	PL	10	1	SH							
7	50180	1011	WASHINGTON	1	PL	38	8	SS							
7	50181	1014	WASHINGTON	1	PL	9	7	NS							
7	50182	1015	WASHINGTON	1	PL	35	5	SS							
7	50183	1016	WASHINGTON	1	PL	9	2	SN							
7	50184	1017	WASHINGTON	1	PL	37	8	SH							
7	50185	1018	WASHINGTON	1	PL	9	9	SH							
7	50186	1020	WASHINGTON	1 1/4	PL	8	9	NS							
7	50187	1021	WASHINGTON	1 1/4	PL	34	12	NS							
7	50188	1024	WASHINGTON	1	PL	8	10	EW							
7	50190	1027	WASHINGTON	1	PL	5	23	NE							
7	50191	1028	WASHINGTON	1	PL	9	10	NS							
7	50192	1030	WASHINGTON	1	PL	8	10	NS							
7	50193	1031	WASHINGTON	1	PL	35	2	NS							
7	50194	1033	WASHINGTON	1	PL	33	2	SS							
7	50195	1035	WASHINGTON	1	PL	35	2	SH							
7	50196	1039	WASHINGTON	1 1/4	S	34	6	NS							
7	50197	1040	WASHINGTON	1	PL	6	3	SN							
7	50198	1041	WASHINGTON	1	PL	36	5	SN							
7	50199	1042	WASHINGTON	1	PL	7	2	SH							
7	50200	1043	WASHINGTON	1	PL	35	3	SN							
7	50201	1044	WASHINGTON	1	PL	9	2	SS							
7	50202	1045	WASHINGTON	1	CU	37	13	SN							
7	50203	1046	WASHINGTON	1 1/4	CU	7	8	SH							
7	50204	1047	WASHINGTON	1	CU	37	16	NS							

** GAS MAIN REPLACEMENT **														
** SERVICE CHECK LIST **														
(SUBJECT TO STANDARD FIELD CHECK)														
CO#	ID#	HSE#	STREET NAME	SIZE	KIND	LENGTH	DIST	DIR	NEAR HOUSE			JCF	COMMENTS	
									METER	5' X 5'	4' X 2'			4' X 2'
									LOC	SDWK	DWAY	PAV	SOD	OUT

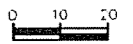
** GAS MAIN REPLACEMENT **														
** SERVICE CHECK LIST **														
(SUBJECT TO STANDARD FIELD CHECK)														
CO#	ID#	HSE#	STREET NAME	SIZE	KIND	LENGTH	DIST	DIR	NEAR HOUSE			JCF	COMMENTS	
									METER	5' X 5'	4' X 2'			4' X 2'
									LOC	SDWK	DWAY	PAV	SOD	OUT

** GAS MAIN REPLACEMENT **														
** SERVICE CHECK LIST **														
(SUBJECT TO STANDARD FIELD CHECK)														
CO#	ID#	HSE#	STREET NAME	SIZE	KIND	LENGTH	DIST	DIR	NEAR HOUSE			JCF	COMMENTS	
									METER	5' X 5'	4' X 2'			4' X 2'
									LOC	SDWK	DWAY	PAV	SOD	OUT

** GAS MAIN REPLACEMENT **														
** SERVICE CHECK LIST **														
(SUBJECT TO STANDARD FIELD CHECK)														
CO#	ID#	HSE#	STREET NAME	SIZE	KIND	LENGTH	DIST	DIR	NEAR HOUSE			JCF	COMMENTS	
									METER	5' X 5'	4' X 2'			4' X 2'
									LOC	SDWK	DWAY	PAV	SOD	OUT

** GAS MAIN REPLACEMENT **														
** SERVICE CHECK LIST **														
(SUBJECT TO STANDARD FIELD CHECK)														
CO#	ID#	HSE#	STREET NAME	SIZE	KIND	LENGTH	DIST	DIR	NEAR HOUSE			JCF	COMMENTS	
									METER	5' X 5'	4' X 2'			4' X 2'
									LOC	SDWK	DWAY	PAV	SOD	OUT

REVISIONS



MAIN MATERIAL LIST

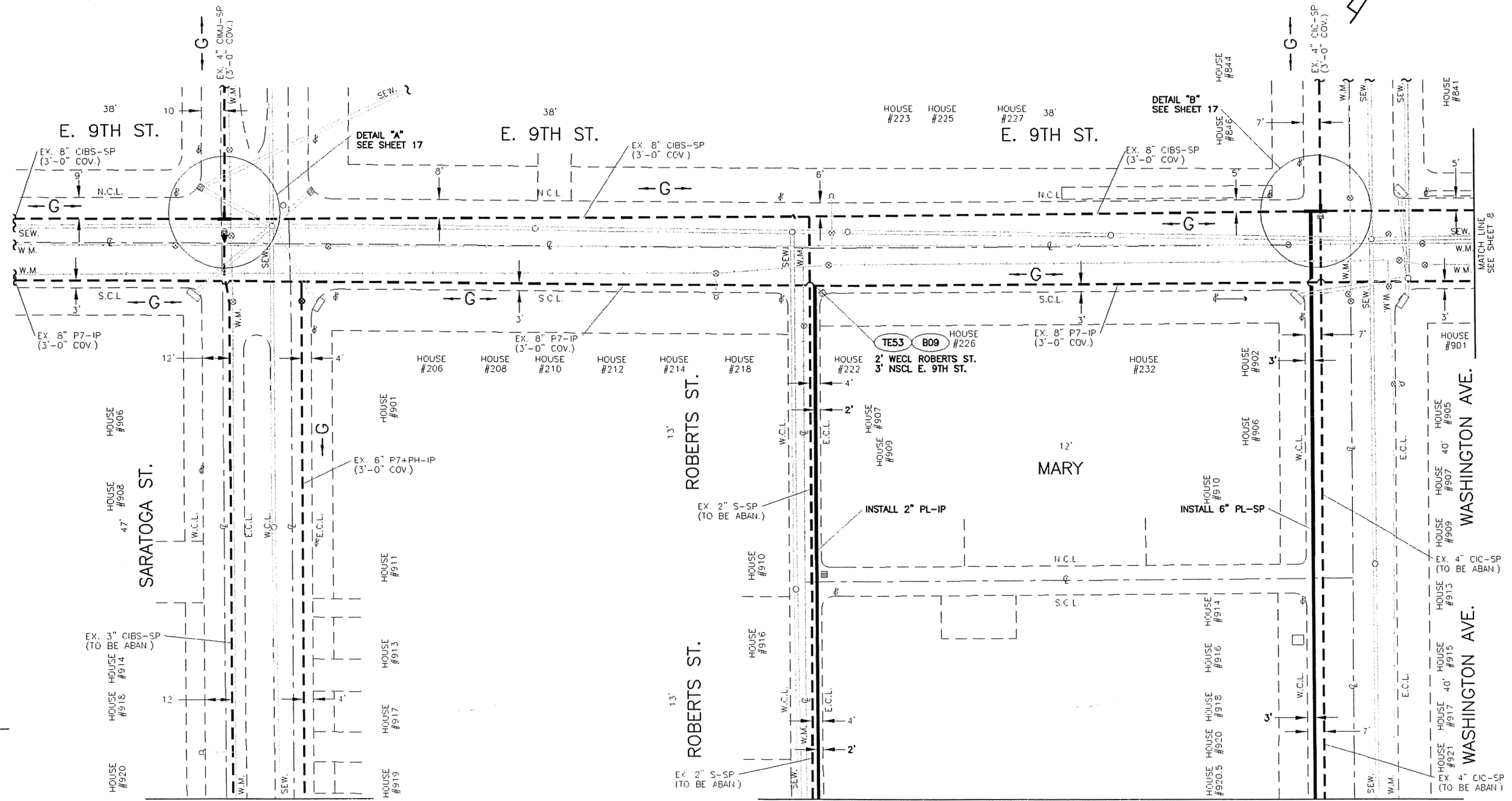
ITEM	DESCRIPTION	STOCK NO	EST	ACTUAL
251DR	4" SWPC PIPE	0050105451	2	
251DR	3/4" PIPE STEEL	0050056026	1	
251DR	4" BUTT WELD CAP	0050057339	1	
251DR	1" THREADED	0050057168	1	
251DR	3/4" X 2 1/2" HIPPLE	0050056730	1	
251DR	4" X 2" BUTT WELD REDUCER	0050057342	2	
251DR	1" X 3/4" SYPHON COUPLING	0050057466	1	
251DR	17# ANODE	0050056181	1	
251DR	3/4" COUPLING RIGHT TO LEFT HAND THD	0050056424	1	
251DR	4" BUTT WELD TEE	0050057886	1	
251DR	ROUND VALVE BOX	0050057222	1	
251DR	ROUND VALVE LID	0050057324	1	
251DR	3/4" SCREW CAP	0050056255	1	
12PLVA	3/4" BRASS BALL VALVE ASSEMBLY	0050057241	2	
12PLVA	RECT. VALVE BOX ASSEMBLY	0050057269	1	
12PLVA	1" CTS STAB COUPLING	0050090652	2	
12PLVA	12" PLASTIC VALVE	0050118114	1	
12PLVA	1" X 3/4" PL-BRASS TRANSITION FITTING	000520028	2	
12PLVA	3/4" BRASS PLUG	0050056872	2	
12PLVA	12" X 1" CTS ELECTROFUSION TAP TEE	0050121864	1	
12PLVA	1" - 90 DEG. CTS STAB ELL	0000520567	2	
12PLVA	VALVE BOX	0050122170	1	
12PLDR	3/4" BRASS CAP	0050093089	1	
12PLDR	1" X 3/4" PL-BRASS TRANSITION FITTING	000520028	1	
12PLDR	12" IPS BUTT FUSION TEE	0050118111	1	
12PLDR	12" IPS X 1" CTS ELECTROFUSION TAP TEE	0050121864	1	
12PLDR	12" X 8" IPS BUTT FUSION REDUCER	0050118109	1	
12PLDR	ROUND VALVE BOX	0050057322	1	
12PLDR	1" CTS 90 DEG. BUTT FUSION ELL	0050088393	1	
12PLDR	1" CTS ELECTROFUSION COUPLING	0050057411	1	
12PLDR	ROUND VALVE BOX LID	0050057324	1	
12PLDR	8" IPS BUTT FUSION CAP	0050092510	1	
AN3	17# CALVOMAG	0050056182	10	
AS3	RECT. VALVE BOX ASSEMBLY	0050057269	2	
BO3	MACHINE BOLTS & NUTS 3" 150 FLANGE 5/8" X 3 1/4"	0050057277	4	
BO9	ROUND VALVE BOX	0050057322	29	
BO9	ROUND VALVE BOX LID	0050057324	29	
CA28	4" IPS BUTT FUSION CAP	0050057347	1	
CA32	2" IPS PURGE POINT FITTING	0050057593	4	
CA37	12" IPS BUTT FUSION CAP	0050118101	1	
CO8	3" COUPLING #39 S-S INS	0050057456	1	
CO24	6" S X 4" PL REDUCING COUPLING	0050057498	1	
CO27	2" COUPLING #711 S-PL W/STIFFENER	0050057490	1	
CO30	6" ELECTROFUSION COUPLING	0050091357	5	
CO32	3" COUPLING #711 S-PL W/STIFFENER	0050057432	1	
CO33	4" COUPLING #711 S-PL W/STIFFENER	0050057434	6	
CO34	6" COUPLING #711 S-PL W/STIFFENER	0050057436	7	
CO41	4" ELECTROFUSION COUPLING	0050057407	6	
CO44	4" CI-PL COUPLING W/STIFFENER	0050057413	2	
CO47	8" ELECTROFUSION COUPLING	0050092525	4	
CO48	8" CI-PL COUPLING W/STIFFENER	0050092526	9	
CO49	8" COUPLING #711 S-S NON-INS	0050092528	4	
CO58	12" IPS COUPLING #711 S-PL	0050118102	2	
CO59	12" IPS ELECTROFUSION COUPLING	0050118104	9	
EL4	6" - 90 DEG. S.R. WELD ELL	0050057541	2	
EL13	3" - 45 DEG. WELD ELL	0050057534	2	
EL38	4" - 45 DEG. IPS BUTT FUSION ELL	0050057554	1	
EL40	3" - 45 DEG. IPS BUTT FUSION ELL	0050091394	2	
EL44	6" - 90 DEG. IPS BUTT FUSION ELL	0050088406	1	
EL46	8" - 90 DEG. IPS BUTT FUSION ELL	0050092511	1	
EL52	12" - 45 DEG. IPS BUTT FUSION ELL	0050118105	3	
FL12	3" 150# RF SLIP ON FLANGE	0000525231	1	
GA2	3" 150# GASKET	0050057687	1	
P1	2" SWPC PIPE .154 API 5L GRADE X-42	0050105448	97'	
P3	4" SWPC PIPE .188 API 5L GRADE X-42	0050105451	791'	
P4	6" SWPC PIPE .188 API 5L GRADE X-42	0050105452	386'	
P5	8" SWPC PIPE .188 API 5L GRADE X-42	0050105453	52'	
P19	2" PLASTIC PIPE - 500' .216 SDR 11	0050056008	797'	
P22	4" IPS PLASTIC PIPE - 40' .395 SDR 11.5	0050056058	1,686'	
P26	3" IPS PLASTIC PIPE - 40' .491 SDR 11.5	0050088397	9'	
P27	6" IPS PLASTIC PIPE - 40' .491 SDR 13.5	0050088398	811'	
P28	8" IPS PLASTIC PIPE - 40' .639 SDR 13.5	0050092508	1,229'	
P36	12" IPS PLASTIC PIPE - 40' SDR 13.5	0050118108	791'	
RE4	8" X 4" WELD REDUCER	0050057741	2	
RE5	8" X 6" WELD REDUCER	0050057751	1	
RE7	6" X 4" WELD REDUCER	0050057750	3	
RE8	4" X 2" WELD REDUCER	0050057742	1	
RE9	4" X 3" WELD REDUCER	0050057746	1	
RE11	4" IPS X 2" IPS BUTT FUSION REDUCER	0050057758	2	
RE13	4" IPS X 3" IPS BUTT FUSION REDUCER	0050085409	1	
RE15	6" IPS X 4" IPS BUTT FUSION REDUCER	0050088410	5	
RE18	8" IPS X 6" IPS BUTT FUSION REDUCER	0050092516	9	
RE21	12" IPS X 8" IPS BUTT FUSION REDUCER	0050118109	4	
ST6	4" STIFFENER	0050057855	1	
ST8	8" STIFFENER	0050092527	1	
ST10	12" STIFFENER	0050118103	1	
TE3	4" WELD TEE	0050057886	1	
TE4	6" WELD TEE	0050057889	3	
TE5	8" WELD TEE	0050057890	2	
TE46	6" IPS X 2" IPS ELECTROFUSION HIGH VOLUME PUN	0050092524	1	
TE48	8" IPS BUTT FUSION TEE	0050092512	6	
TE53	8" IPS X 2" IPS ELECTROFUSION HIGH VOLUME PUN	0050092524	1	
TE65	8" X 8" X 4" IPS REDUCING BUTT FUSION BRANCH TEE	0050092520	3	
TE81	12" IPS BUTT FUSION TEE	0050118111	5	
TF3	4" PL-S TRANSITION FITTING	0050057595	5	
TF4	6" PL-S TRANSITION FITTING	0050068407	2	
TW1	TRACER WIRE	0050079028	4,280'	
VA24	3" WERG VALVE #1F2W1 W . F 275#	0050057959	1	
VA56	3" PLASTIC VALVE 80#	0050085489	1	

REVISIONS

RETIREMENT MATERIAL LIST

ITEM	DESCRIPTION	STOCK NO	EST	ACTUAL
CA2	3" M.J. CAP	0050057328	3	
CA3	4" M.J. CAP	0050057329	2	
CA4	6" M.J. CAP	0050057330	3	
CA6	12" M.J. CAP	0050057333	2	
CA8	3" WELD CAP	0050057336	1	
CA28	4" IPS BUTT FUSION CAP	0050057347	1	
CA35	3" IPS BUTT FUSION CAP	0050091397	1	
CO32	3" COUPLING #711 S-PL W/STIFFENER	0050057432	1	

NOTE:
CONVERT ALL SP SERVICES ON
SARATOGA ST. BETWEEN 9TH AND
10TH ST., TO BE CONVERT TO IP.

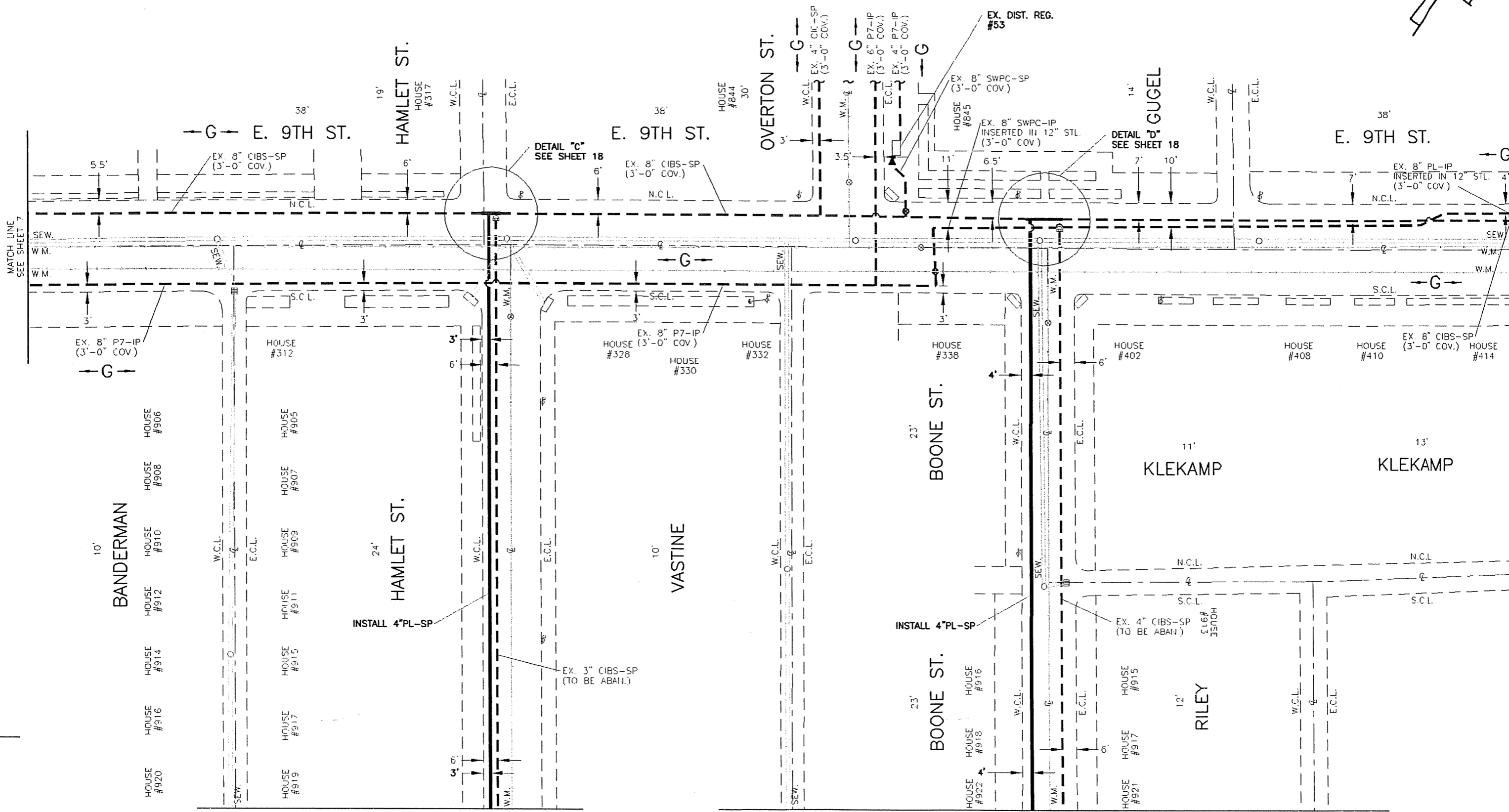
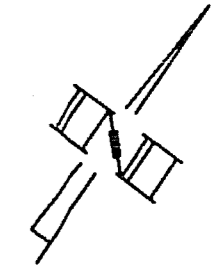


REVISIONS

MATCH LINE
SEE SHEET 9

MATCH LINE
SEE SHEET 10

0 0 - 0 3 8 2 - 7



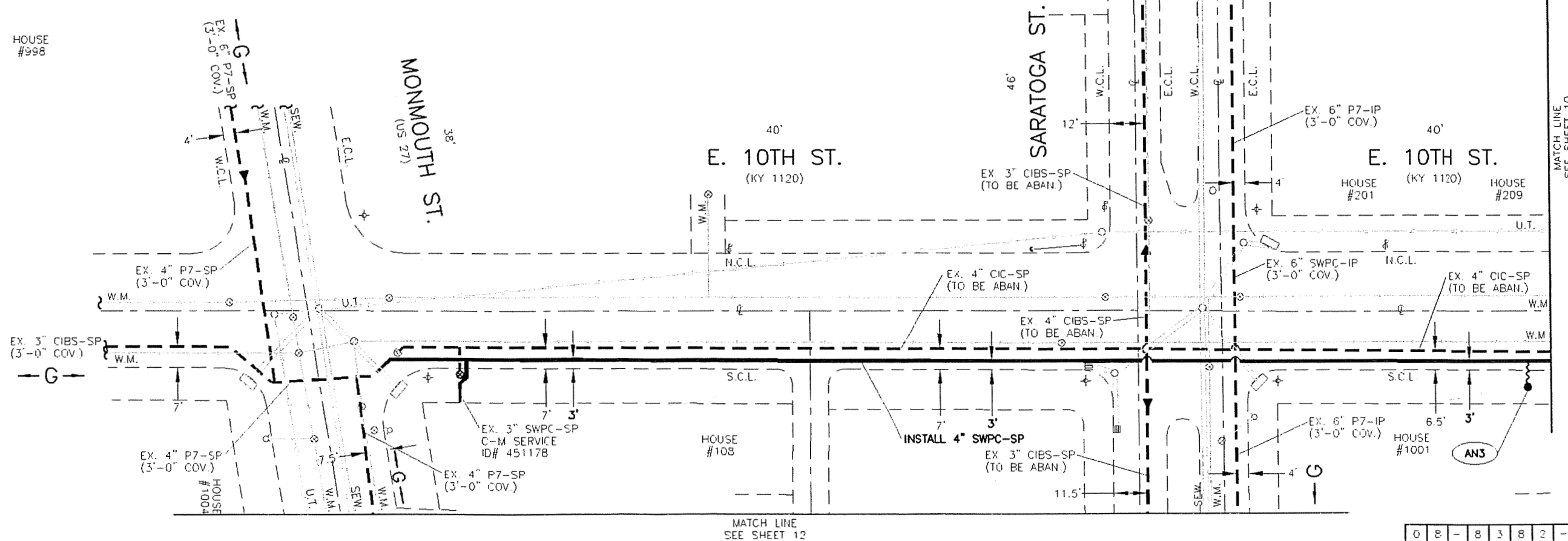
MATCH LINE
SEE SHEET 7

MATCH LINE
SEE SHEET 10

MATCH LINE
SEE SHEET 11

REVISIONS

NOTE:
CONVERT ALL SP SERVICES ON
SARATOGA ST. FROM 9TH TO
11TH ST. TO BE CONVERTED TO IP.
SP SERVICES ON SARATOGA ST.
TO BE TRANSFERRED TO 6" IP MAIN.



REVISIONS

NOTE:
CONVERT ALL SP SERVICES ON
ROBERT ST. TO IP.

ROBERT ST.
13'

STONE
14'

ROBERT ST.
13'

E. 10TH ST.
(KY 1120)
40'

WASHINGTON AVE.
40'

WASHINGTON AVE.
40'

E. 10TH ST.
(KY 1120)
40'

E. 10TH ST.
(KY 1120)
40'

BANDERMAN
10'

HAMLET ST.
24'

REVISIONS

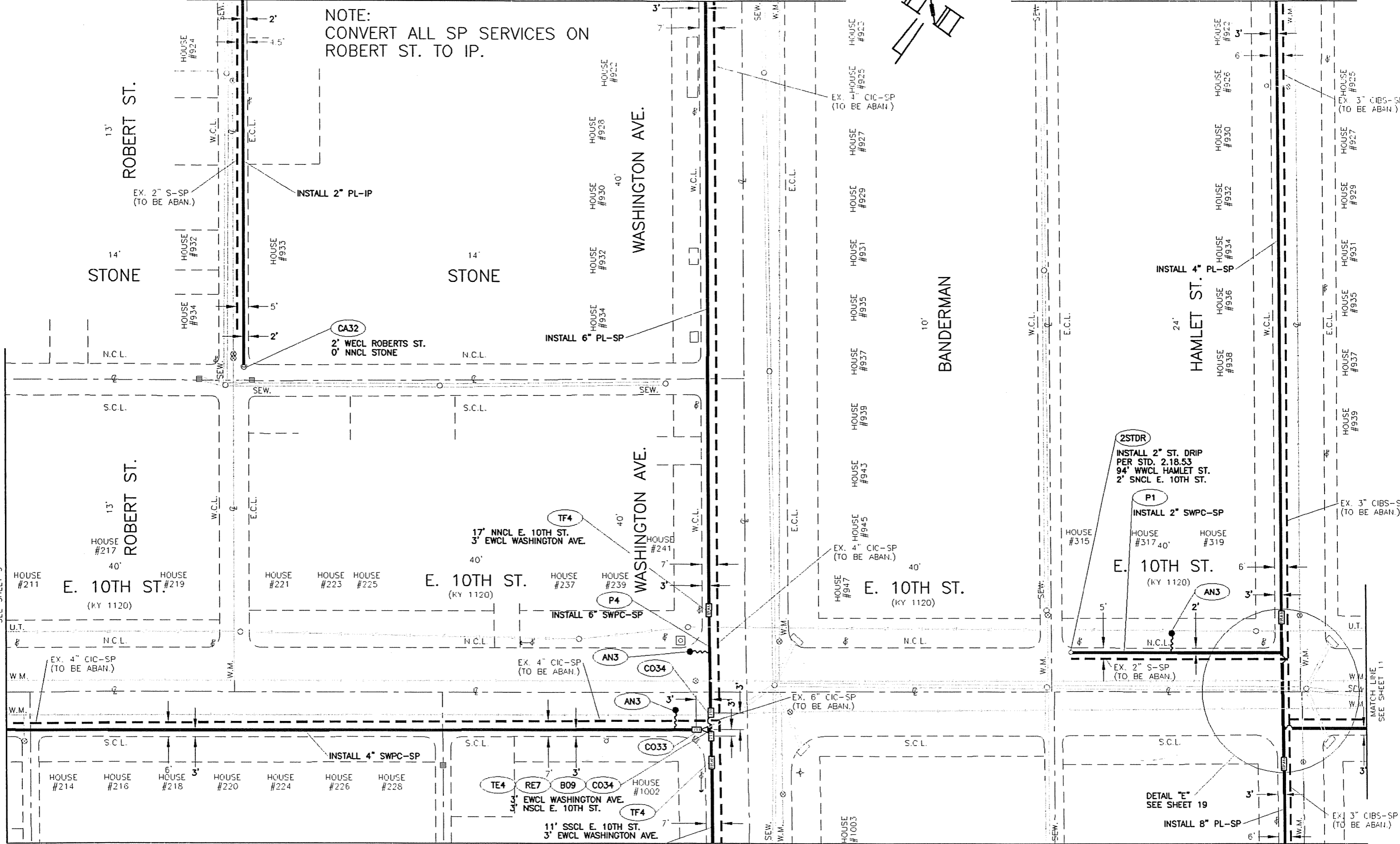
MATCH LINE
SEE SHEET 9

MATCH LINE
SEE SHEET 7

MATCH LINE
SEE SHEET 11

MATCH LINE
SEE SHEET 13

0 8 - 8 3 8 2 - 7



2STDR
INSTALL 2" ST. DRIP
PER STD. 2.18.53
94' WWCL HAMLET ST.
2' SNCL E. 10TH ST.

P1
INSTALL 2" SWPC-SP

E. 10TH ST.
(KY 1120)

AN3

DETAIL "E"
SEE SHEET 19

INSTALL 8" PL-SP

CA32
2' WECL ROBERTS ST.
0' NNCL STONE

INSTALL 6" PL-SP

TF4
17' NNCL E. 10TH ST.
3' EWCL WASHINGTON AVE.

P4
INSTALL 6" SWPC-SP

TE4 RE7 B09 C034
11' SSCL E. 10TH ST.
3' EWCL WASHINGTON AVE.
NSCL E. 10TH ST.

INSTALL 6" PL-SP

INSTALL 4" SWPC-SP

INSTALL 2" PL-IP

INSTALL 4" PL-SP

EX. 2" S-SP
(TO BE ABAN.)

EX. 4" CIC-SP
(TO BE ABAN.)

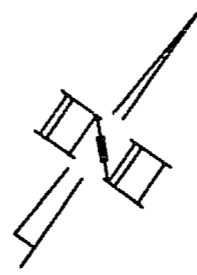
EX. 4" CIC-SP
(TO BE ABAN.)

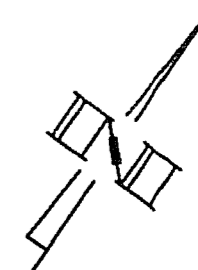
EX. 6" CIC-SP
(TO BE ABAN.)

EX. 4" CIC-SP
(TO BE ABAN.)

EX. 3" CIBS-SP
(TO BE ABAN.)

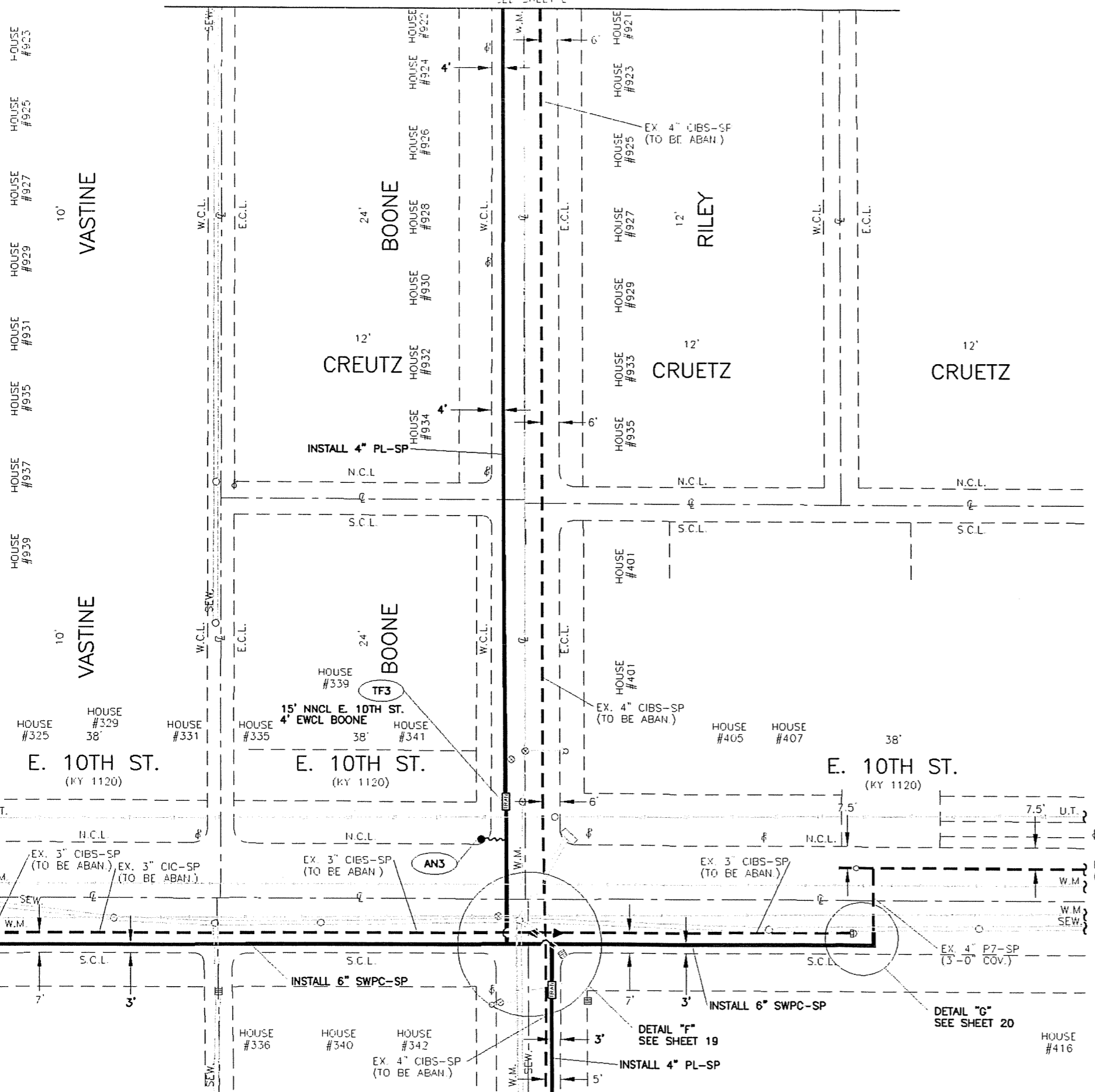
EX. 3" CIBS-SP
(TO BE ABAN.)





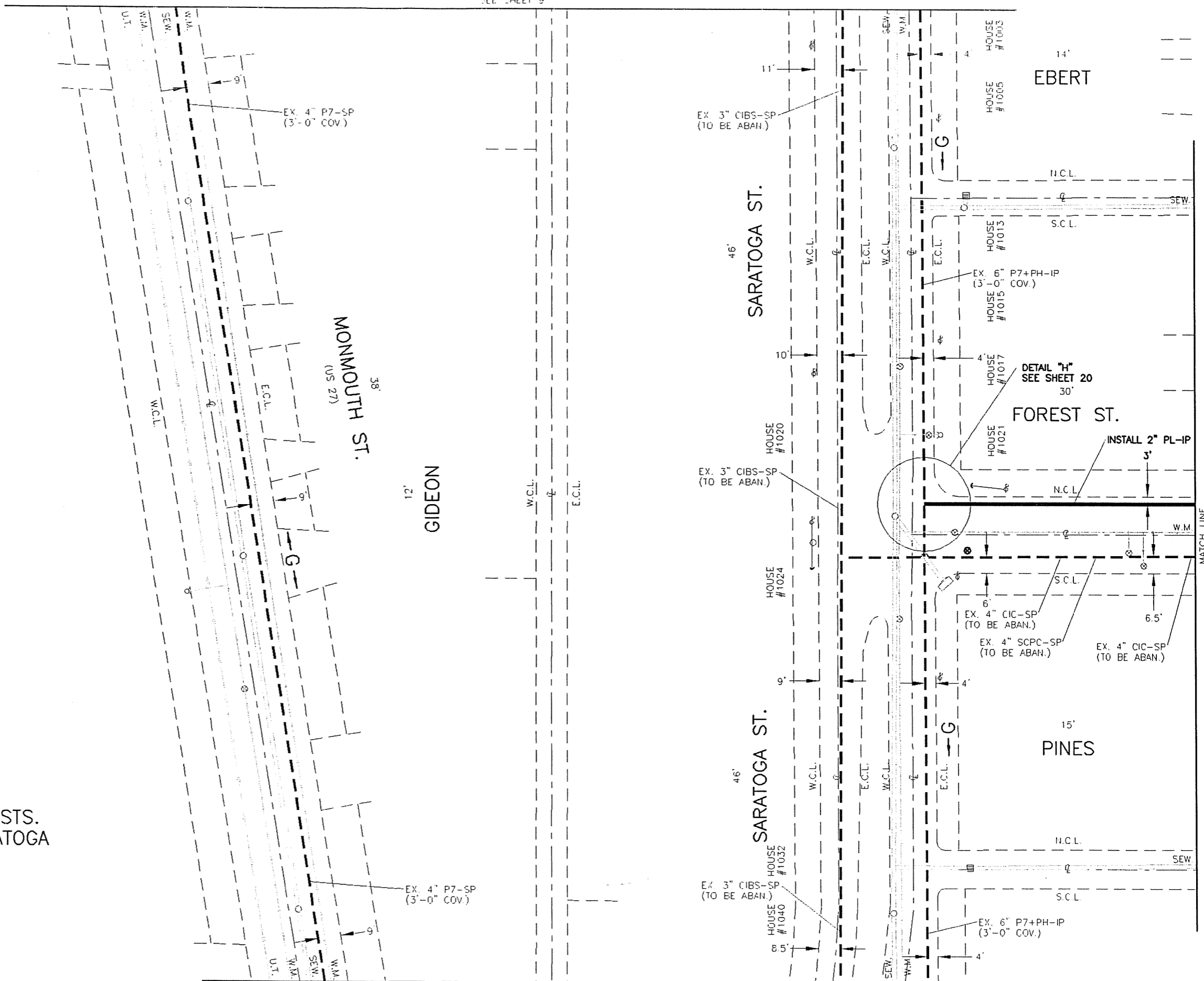
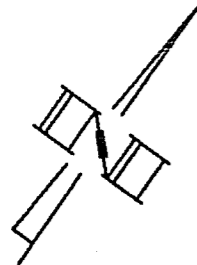
MATCH LINE
SEE SHEET 9

MATCH LINE
SEE SHEET 14



REVISIONS

MATCH LINE
SEE SHEET 9



NOTE:
CONVERT ALL SP SERVICES ON
SARATOGA ST. FROM 9TH TO 11TH STS.
AND ON FOREST ST. BETWEEN SARATOGA
AND WASHINGTON AVE. TO IP.

REVISIONS

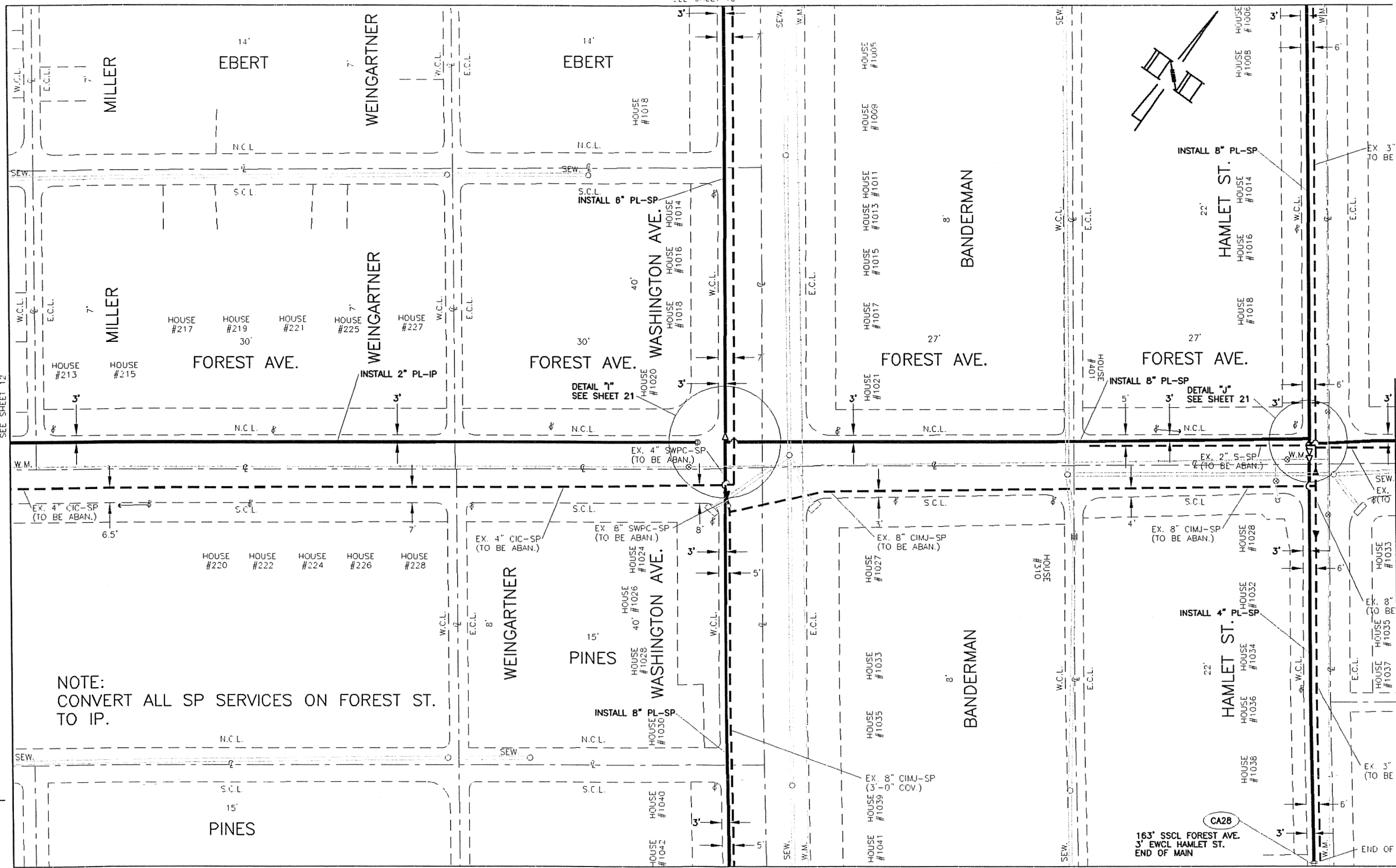
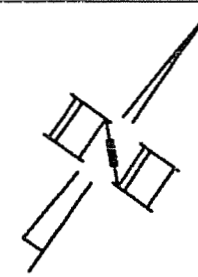
MATCH LINE
SEE SHEET 15

MATCH LINE
SEE SHEET 13

MATCH LINE
SEE SHEET 10

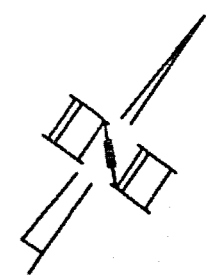
MATCH LINE
SEE SHEET 12

MATCH LINE
SEE SHEET 16



NOTE:
CONVERT ALL SP SERVICES ON FOREST ST.
TO IP.

REVISIONS



MATCH LINE
SEE SHEET 11

11' VIRGINIA HOUSE #1042

EX. 4" CIBS-SP
(TO BE ABAN.)

N.C.L.

S.C.L.

HOUSE #1014

HOUSE #1016

HOUSE #1018

HOUSE #1020

HOUSE #1022

HOUSE #1024

HOUSE #1026

HOUSE #1028

22' BOONE

RE11 CA32 B09
3' SSCL FORREST AVE.
95' EECL HAMLET ST.

INSTALL 4" PL-SP

EX. 4" CIBS-SP
(TO BE ABAN.)

RE11 CA32 B09
3' WECL BOONE
317' SSCL E. 10TH ST.

10' VASTINE

HOUSE #1009

HOUSE #1011

10' VASTINE

26' FOREST AVE.

HOUSE #401

HOUSE #403

INSTALL 4" PL-SP

N.C.L.

SEW.

S.C.L.

HOUSE #1033

EX. 2" S-SP
(TO BE ABAN.)

8' THOMAS

HOUSE #1035

HOUSE #1037

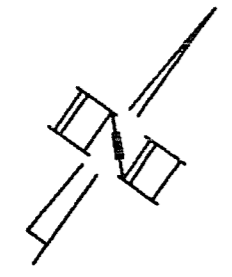
N.C.L.

S.C.L.

MATCH LINE
SEE SHEET 13

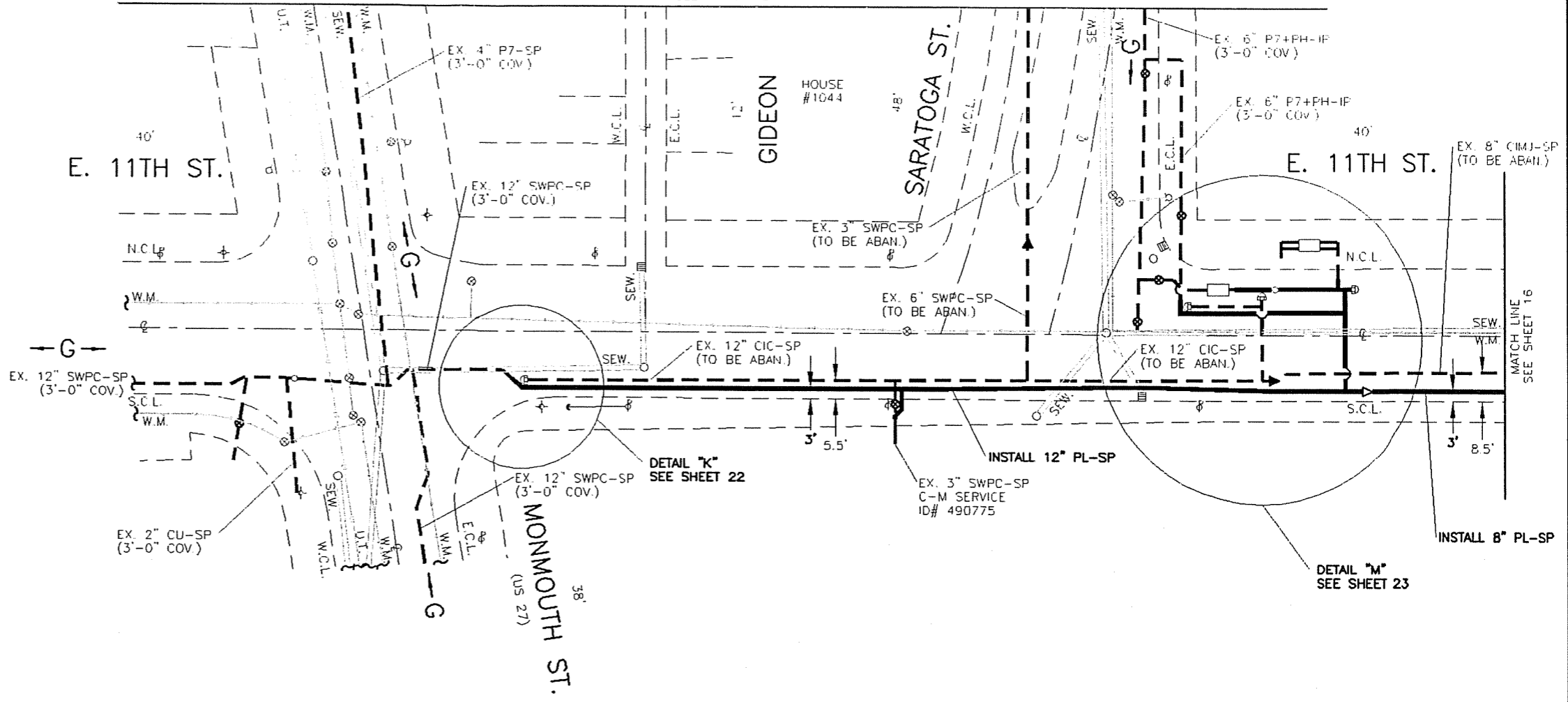
REVISIONS

MATCH LINE
SEE SHEET 12



HOUSE
#1040

HOUSE
#1044

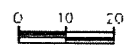


DETAIL "K"
SEE SHEET 22

DETAIL "M"
SEE SHEET 23

NOTE:
CONVERT ALL SP SERVICES ON SARATOGA ST.
FROM 9TH TO 11TH ST TO IP.

REVISIONS



HAMLET ST.
22

BANDERMAN
9'

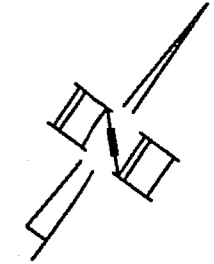
WASHINGTON AVE.
40'

WEINGARTNER

E. 11TH ST.
40'

E. 11TH ST.
40'

MILLER
8



MATCH LINE
SEE SHEET 13

MATCH LINE
SEE SHEET 15

HOUSE #211 HOUSE #219 HOUSE #221
HOUSE #223 HOUSE #229

HOUSE #1044 HOUSE #1046
HOUSE #1045 HOUSE #1047

EX. 8" CIMJ-SP
(TO BE ABAN.)

EX. 8" CIMJ-SP
(TO BE ABAN.)

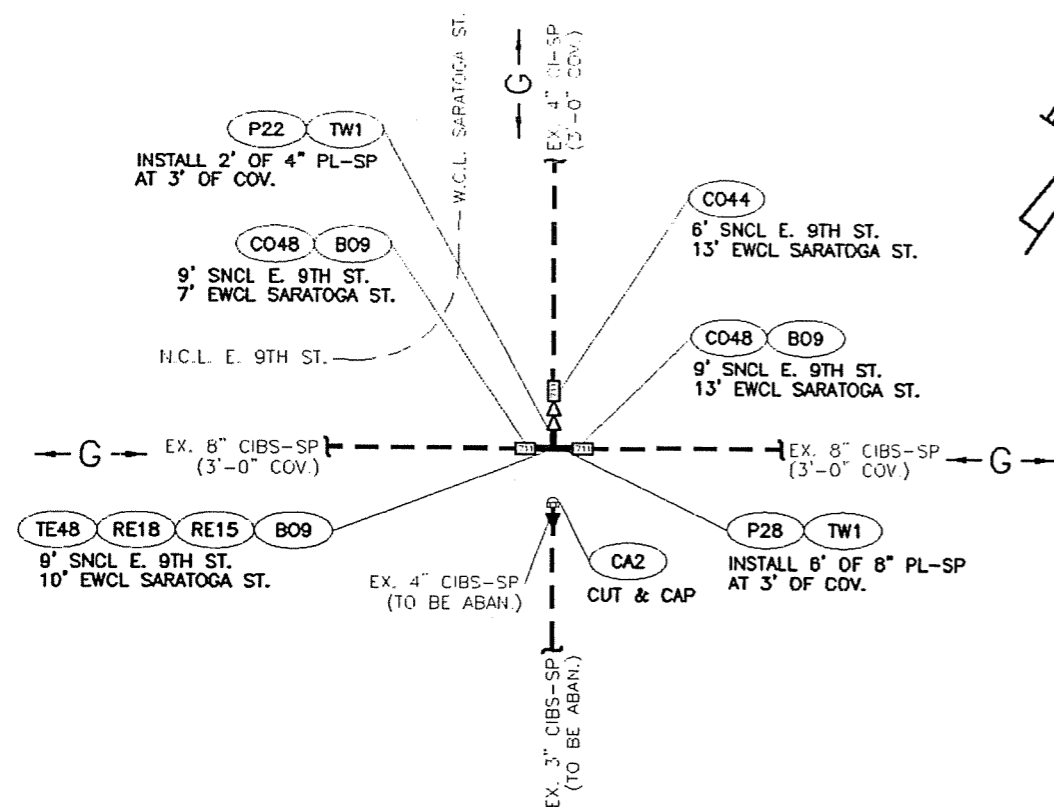
EX. 8" CIMJ-SP
(TO BE ABAN.)

INSTALL 8" PL-SP

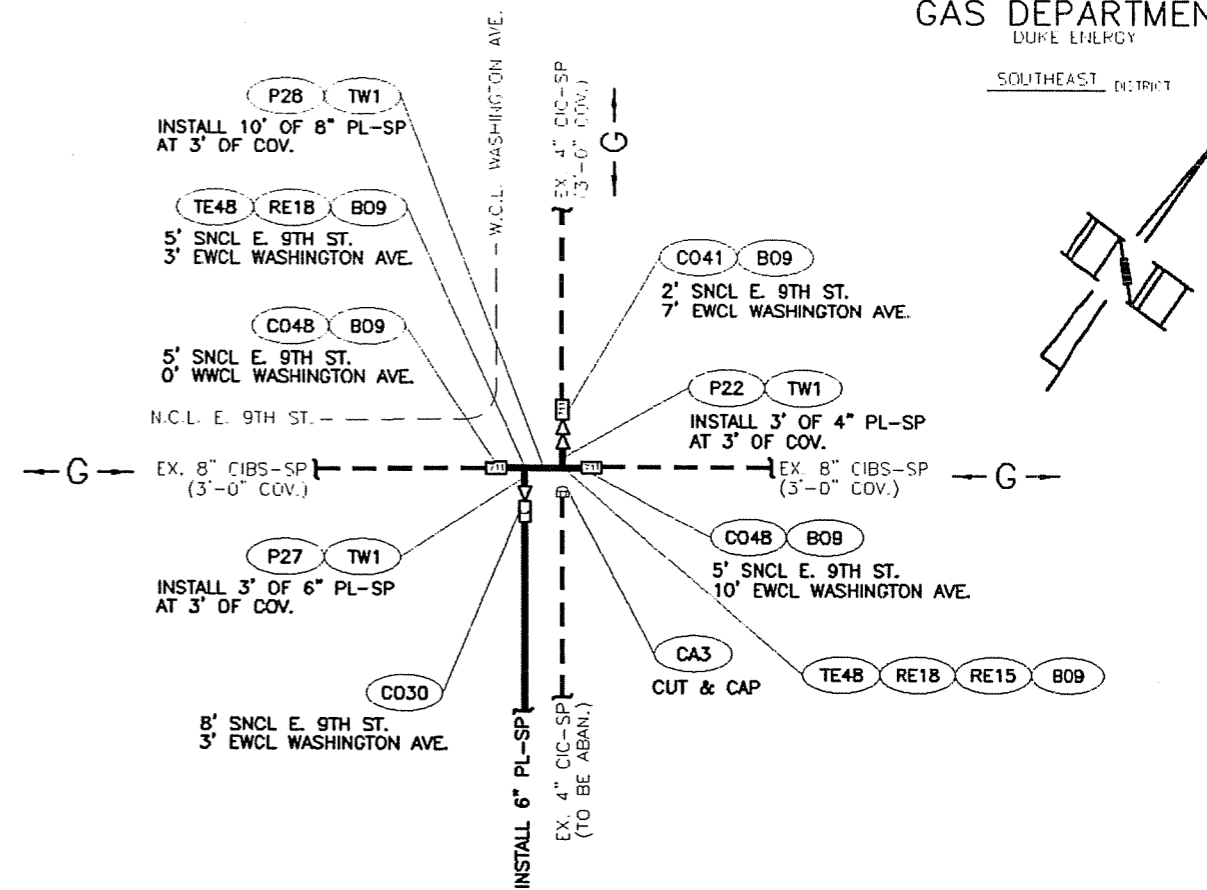
EL46 BC9

3' EWCL WASHINGTON AVE.
3' NSCL E. 11TH ST.

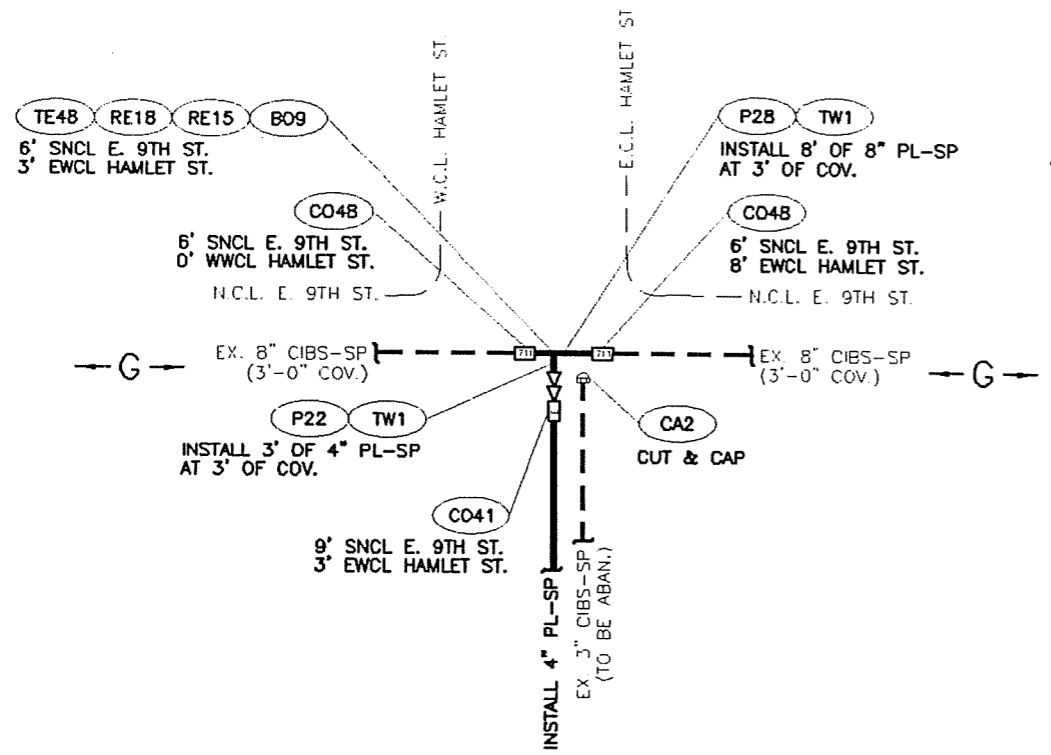
REVISIONS



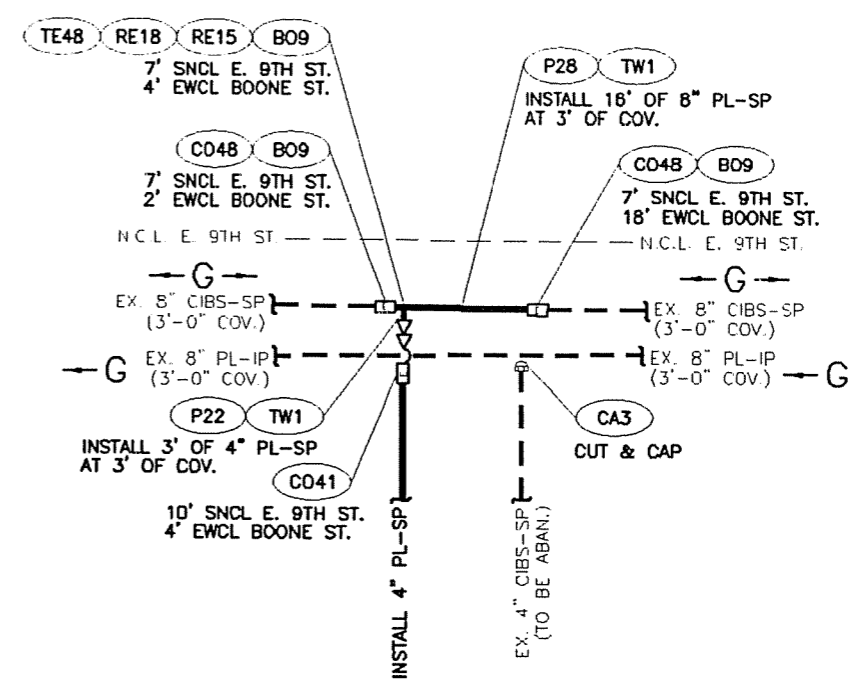
DETAIL "A"
(FROM SHEET 7)
N.T.S.



DETAIL "B"
(FROM SHEET 7)
N.T.S.

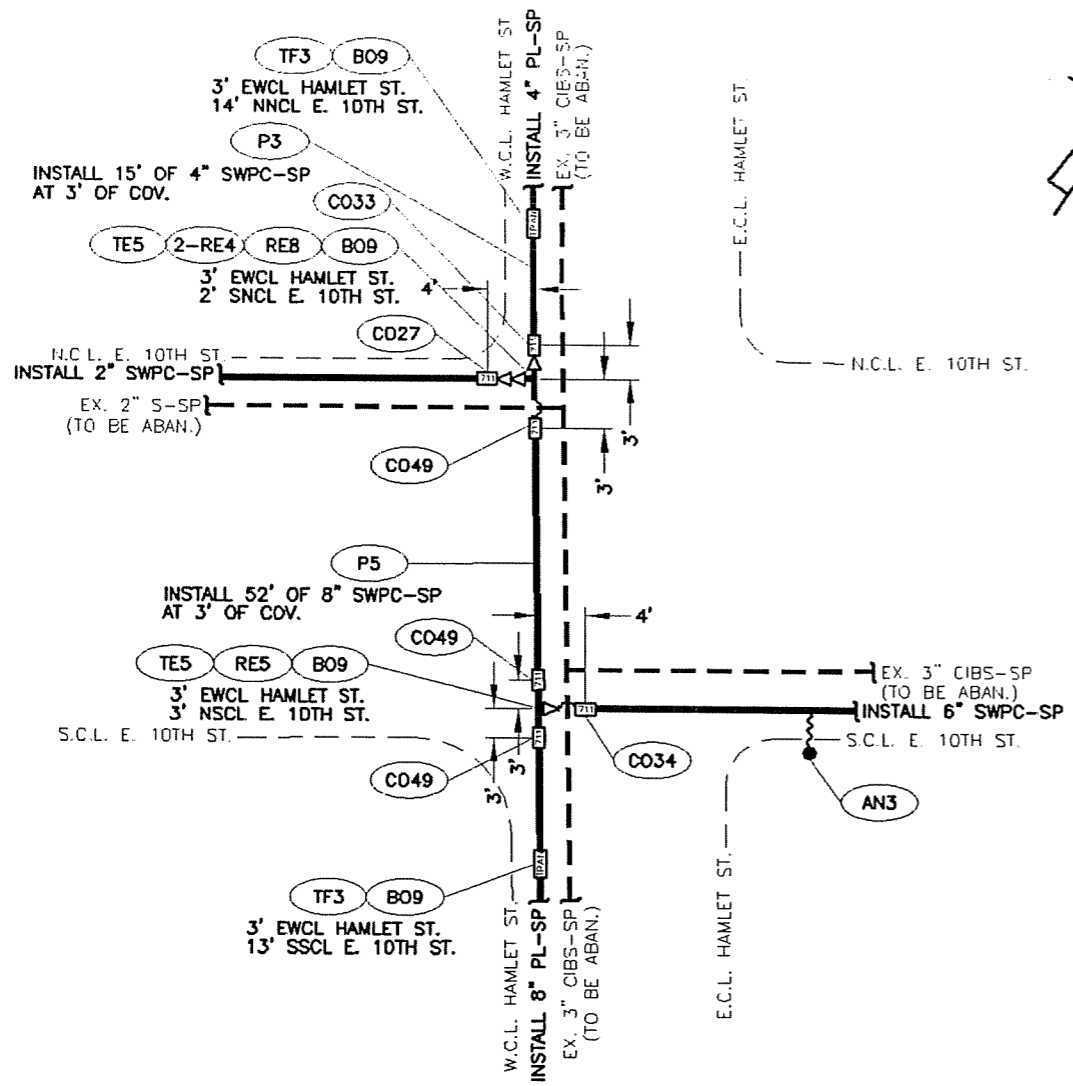
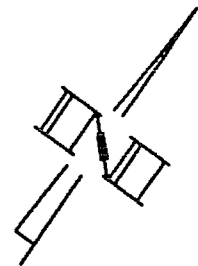


DETAIL "C"
(FROM SHEET 8)
N.T.S.

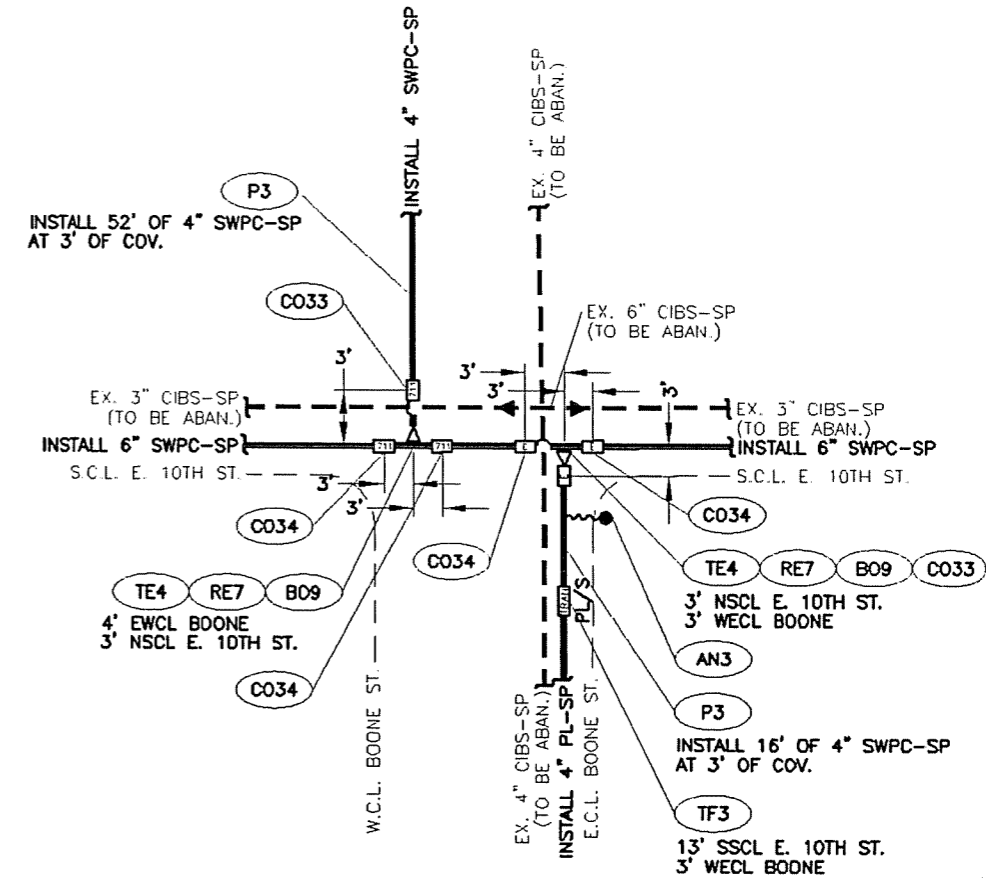


DETAIL "D"
(FROM SHEET 8)
N.T.S.

REVISIONS

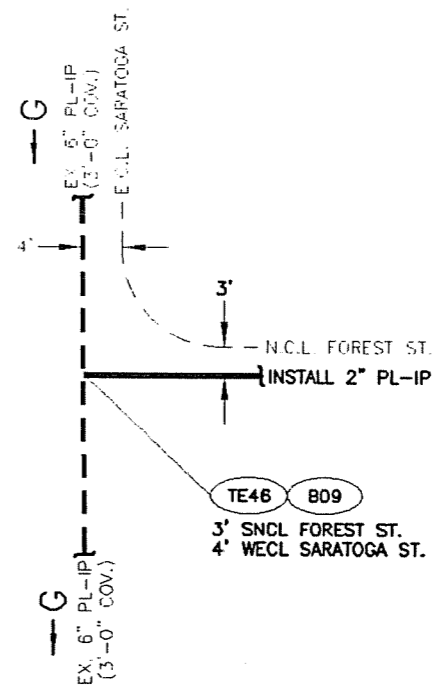
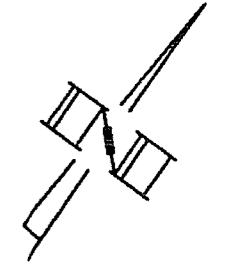


DETAIL "E"
 (FROM SHEET 10)
 N.T.S.

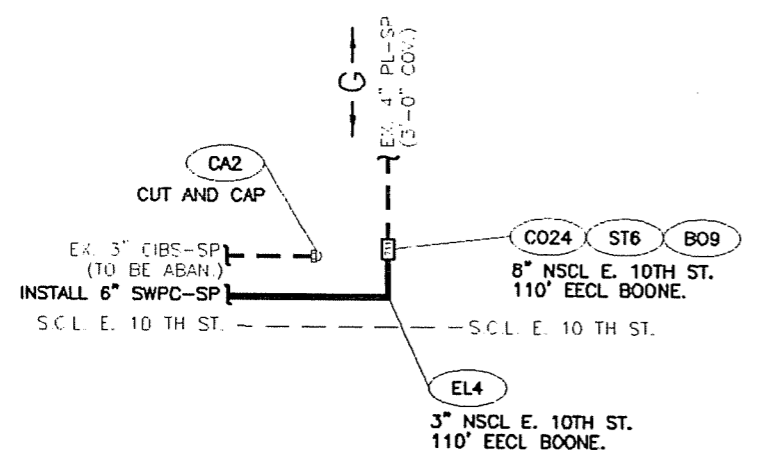


DETAIL "F"
 (FROM SHEET 11)
 N.T.S.

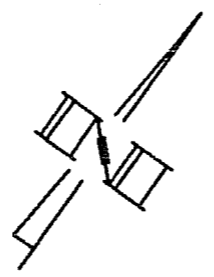
REVISIONS



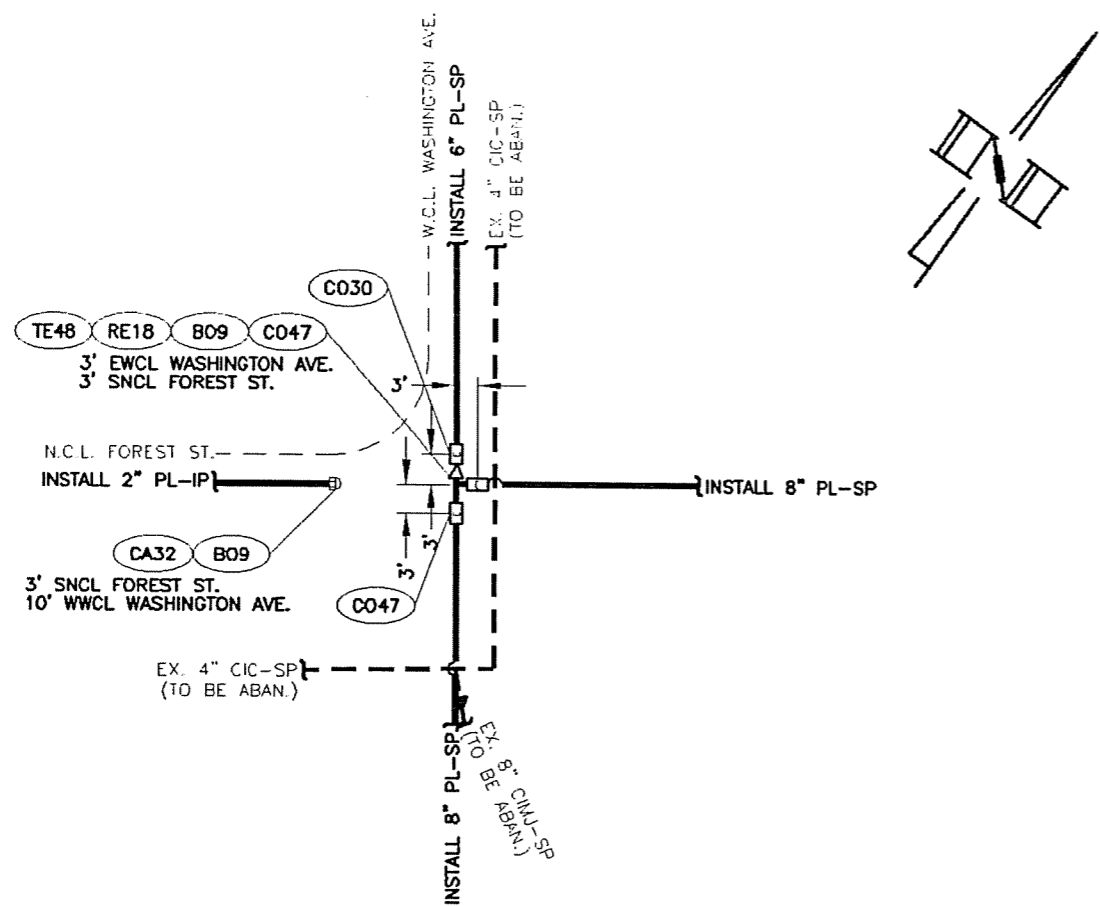
DETAIL "H"
(FROM SHEET 12)
N.T.S.



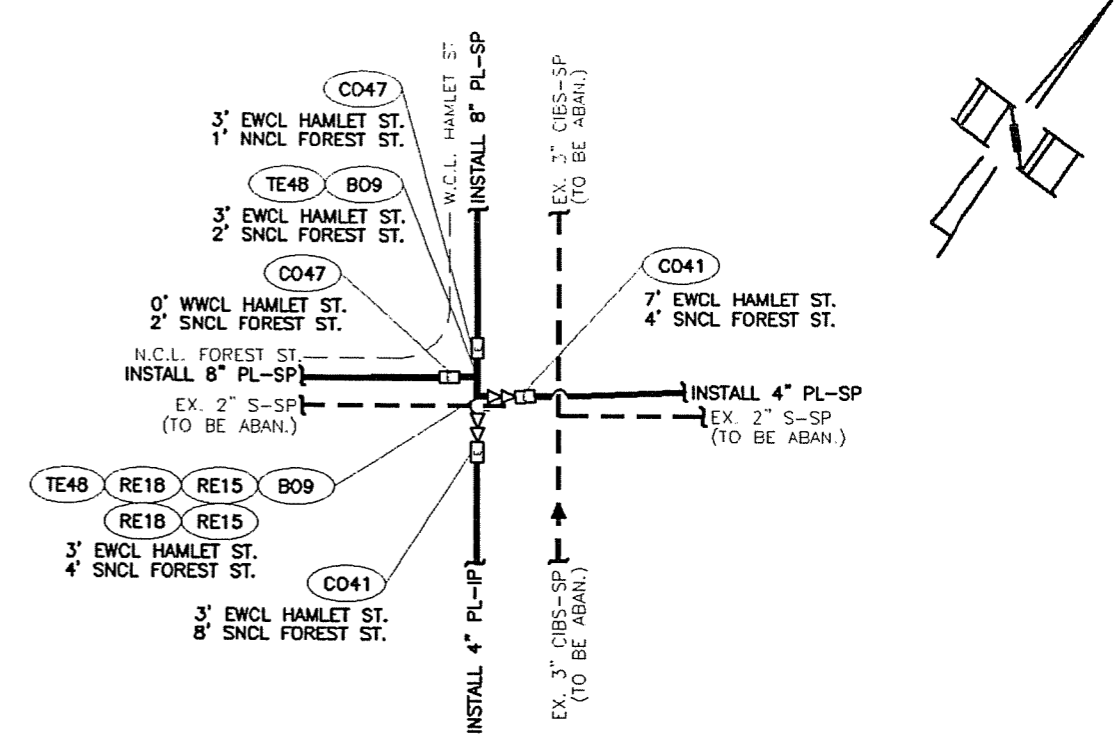
DETAIL "G"
(FROM SHEET 11)
N.T.S.



REVISIONS

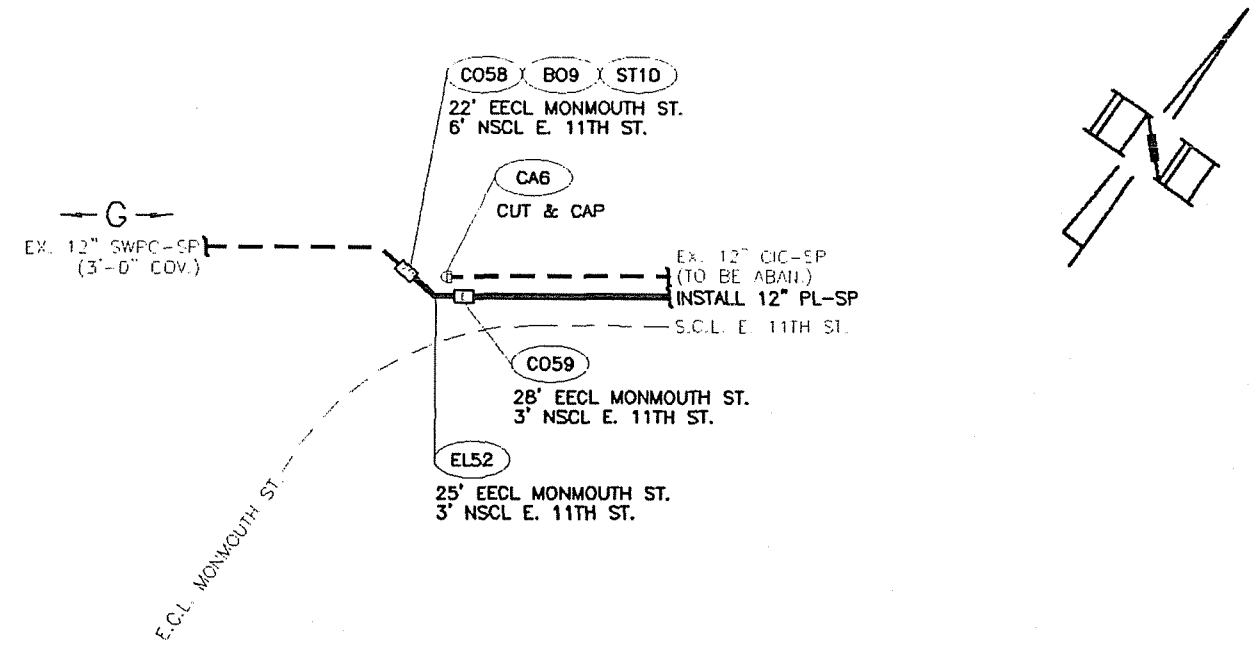


DETAIL "I"
 (FROM SHEET 13)
 N.T.S.



DETAIL "J"
 (FROM SHEET 13)
 N.T.S.

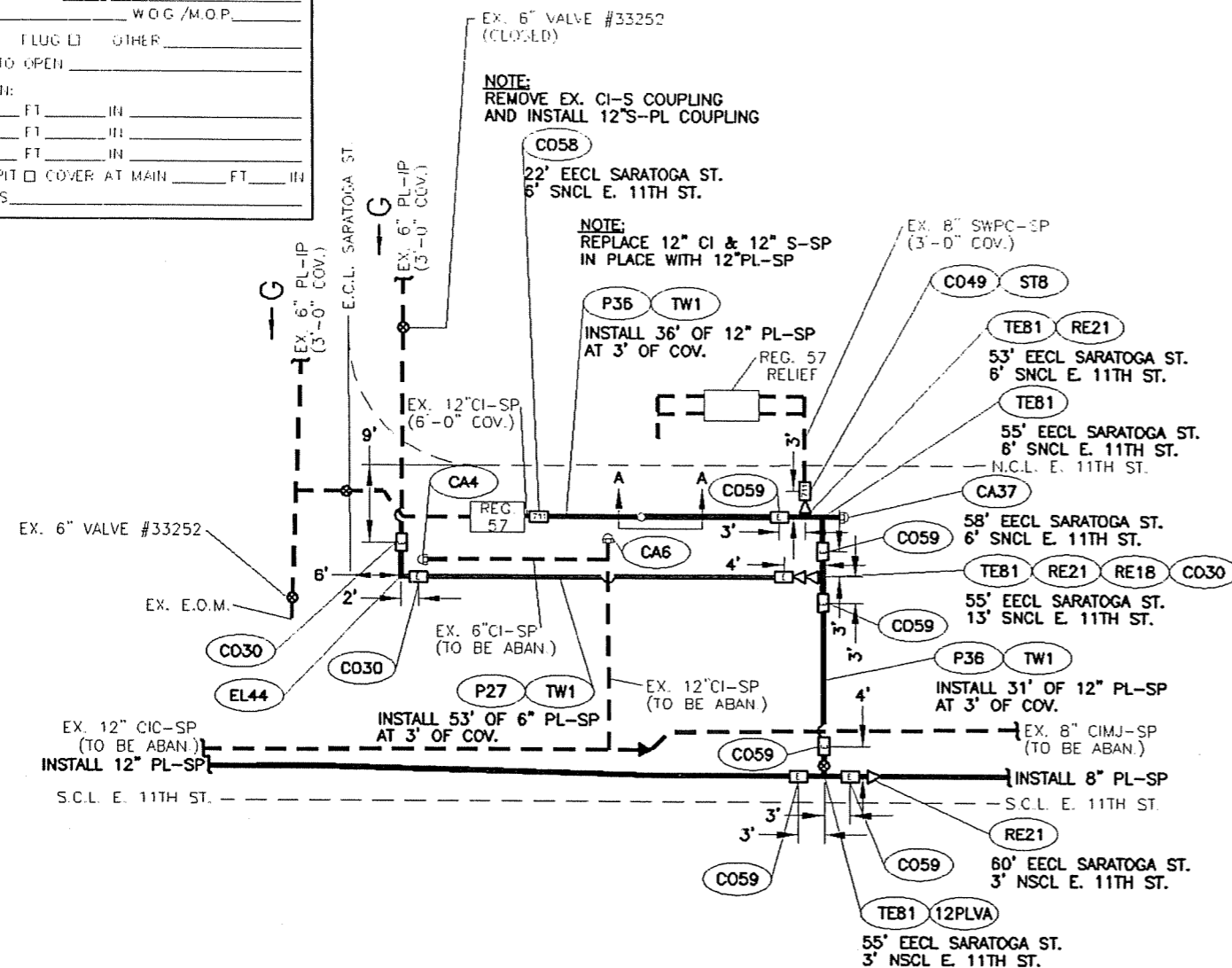
REVISIONS



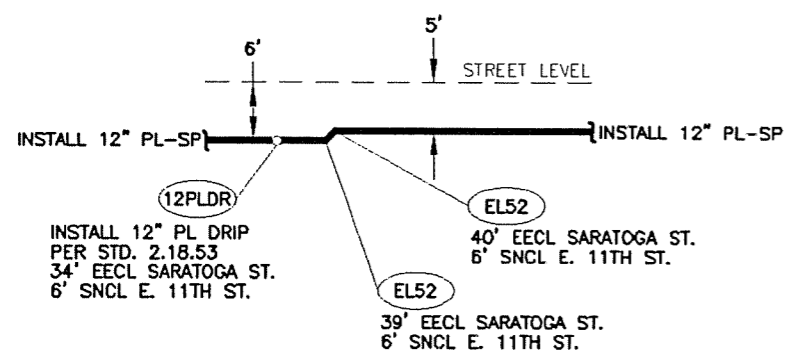
DETAIL "K"
 (FROM SHEET 15)
 N.T.S.

REVISIONS

VALVE # 51056 SIZE _____
 MANUFACTURER _____
 FIG. # _____ W.O.G./M.O.P. _____
 GATE FLUG OTHER _____
 TURNS TO OPEN _____
 LOCATION:
 _____ FT _____ IN _____
 _____ FT _____ IN _____
 _____ FT _____ IN _____
 BOX PIT COVER AT MAIN _____ FT _____ IN
 REMARKS _____



DETAIL "M"
(FROM SHEET 15)
N.T.S.



SECTION A-A
(SEE THIS SHEET)
N.T.S.

REVISIONS