

DUKE ENERGY

CALL K.U.P.I.
2 BUSINESS DAY BEFORE YOU DIG
1-800-752-6007

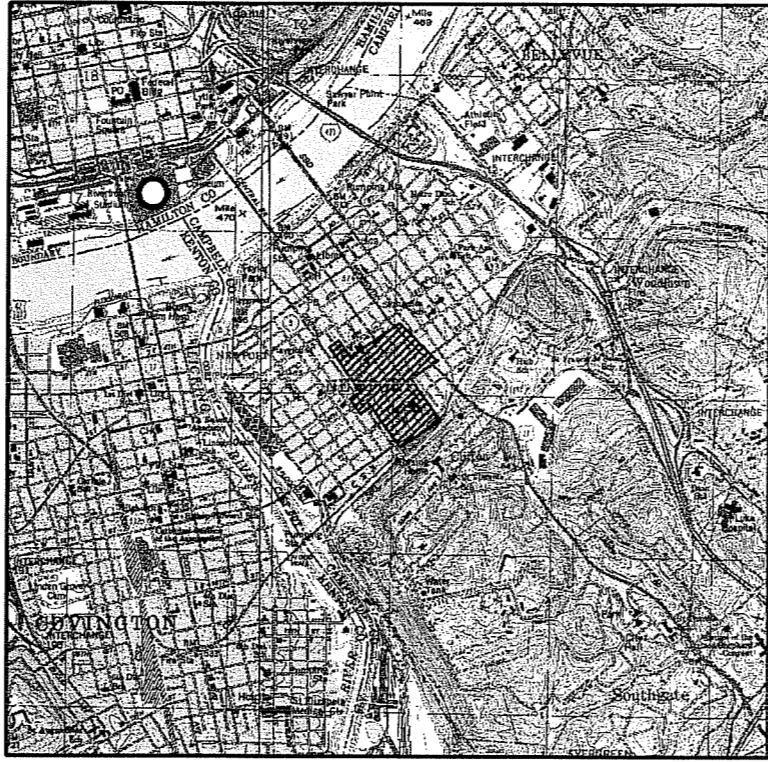
GAS DEPARTMENT
DUKE ENERGY

1
34

SOUTHEAST DISTRICT

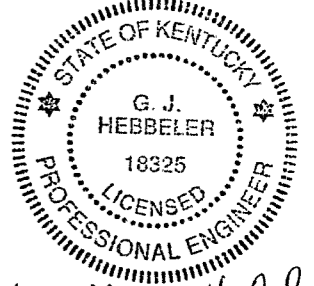
- CONSTRUCTION NOTES:
- CONTACT GAS SYSTEMS OPERATIONS SUPERVISOR PRIOR TO STARTING JOB TO VERIFY GAS FLOW
 - CONTACT PRESSURE SUPERVISOR FOR RECONNECTION OF CONTROL LINES.

AUTHORIZED
November 10, 2007
CONSTRUCTION
DRAWING

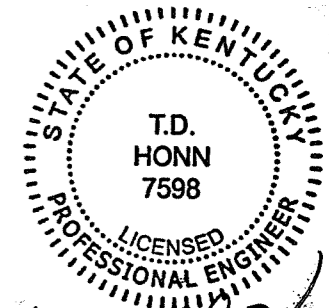


VICINITY MAP
N.T.S.

| MAIN ABANDONMENT | | | MAIN ABANDONMENT | | |
|------------------|------|-----|------------------|------|-----|
| 4" CIMJ | 1950 | 231 | 6" CIMJ | 1950 | 635 |
| 2" SWPC | 1979 | 16 | 6" CIC | 1951 | 6 |
| 8" CI | 1978 | 70 | 6" CIMJ | 1951 | 279 |
| 2" SPC | 1978 | 6 | 6" CIMJ | 1956 | 55 |
| 2" STPC | 1962 | 165 | 8" CIBS | 1929 | 313 |
| 4" CIMJ | 1947 | 51 | 8" SC | 1929 | 20 |
| 4" CIC | 1934 | 113 | 8" CIC | 1929 | 14 |
| 4" CIMJ | 1947 | 97 | 12" ST | 1928 | 474 |
| 4" CIC | 1936 | 5 | 12" CIS | 1929 | 49 |
| 4" SWPC | 1966 | 19 | 8" SPCW | 1992 | 10 |
| 4" CIC | 1936 | 472 | 8" SPCW | 1992 | 8 |
| 4" CIC | 1947 | 80 | 8" CIBS | 1929 | 182 |
| 4" CIMJ | 1941 | 144 | 8" CIBS | 1929 | 14 |
| 4" CIMJ | 1942 | 56 | 8" SWPC | 1929 | 228 |
| 4" CIMJ | 1941 | 60 | 20" S | 1929 | 45 |
| 4" CIMJ | 1950 | 187 | 8" SWPC+C | 1988 | 310 |
| 4" CIMJ | 1941 | 27 | 2" SPCC | 1946 | 449 |
| 2" SC | 1944 | 3 | 4" CIMJ | 1947 | 140 |
| 6" ST | 1929 | 355 | 4" CIMJ | 1947 | 157 |
| 6" CIMJ | 1950 | 143 | 2" CU | 1948 | 147 |
| 6" SC | 1929 | 535 | 4" CIMJ | 1964 | 121 |
| 6" CIMJ | 1941 | 25 | 4" CIMJ | 1949 | 5 |
| 6" CIMJ | 1941 | 36 | 4" CIMJ | 1949 | 91 |
| 6" CIMJ | 1941 | 321 | 4" CIMJ | 1949 | 427 |
| 6" DIMJ | 1965 | 87 | 6" SWPC | 1983 | 25 |
| 6" SPCW | 1990 | 4 | 6" CIMJ | 1950 | 136 |
| 6" CIMJ | 1956 | 55 | 6" CIMJ | 1951 | 41 |
| 6" SC | 1929 | 218 | 6" CIMJ | 1965 | 97 |
| 6" SC | 1929 | 644 | | | |
| 6" CIC | 1940 | 17 | | | |
| 6" CIMJ | 1949 | 52 | | | |
| 6" SC | 1929 | 17 | | | |
| 8" SC | 1929 | 320 | | | |
| 6" CIMJ | 1949 | 166 | | | |
| 6" CIMJ | 1956 | 55 | | | |



4/29/08 G.J. Hebbeler



4/29/08 T.D. Honn

RECEIVED
MAY 05 2008
PUBLIC SERVICE
COMMISSION

| WELDING PROCEDURE(S) | PIPE INSTALLED ON JOB | | | PERMIT(S) REQUIRED | |
|------------------------|-----------------------|------|----------------|--------------------|-------------------|
| REQUIRED | SIZE | KIND | WALL THICKNESS | EST. QUANTITIES | ACTUAL QUANTITIES |
| | 2" | PL | ---- | 1541' | |
| | 4" | PL | ---- | 3205' | |
| | 6" | PL | ---- | 2187' | |
| SPEC. # _____ | 12" | PL | ---- | 5' | |
| SPEC. # _____ | 4" | STL | .188 | 77' | |
| SPEC. # _____ | 6" | STL | .188 | 96' | |
| SPEC. # _____ | 8" | STL | .188 | 1245' | |
| SPEC. # _____ | 12" | STL | .219 | 8' | |
| TOTAL ACTUAL INSTALLED | | | | | |

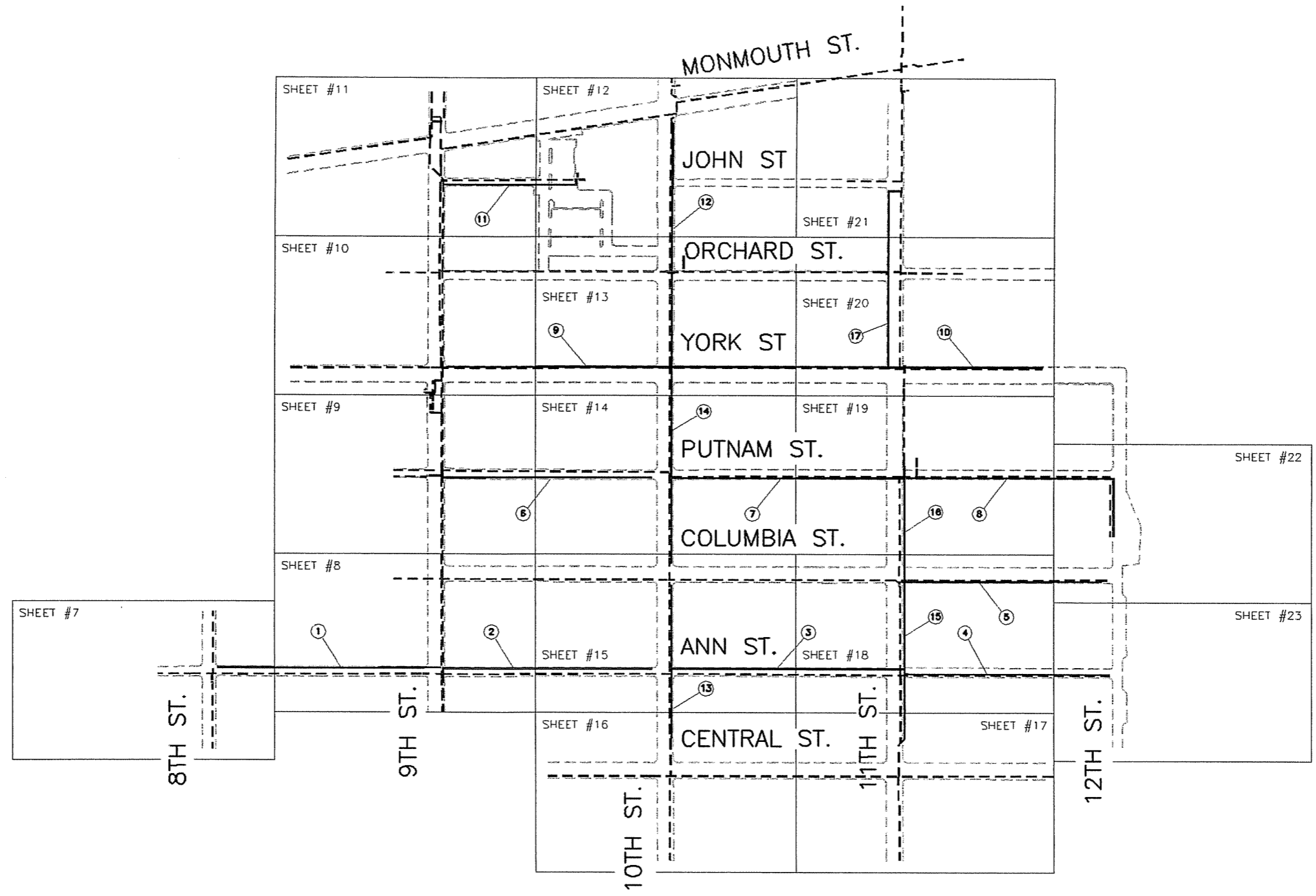
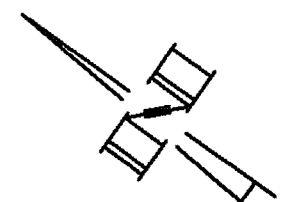
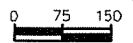
| | | |
|---|--|--|
| DESIGN REVIEW OF COMPLETED CONSTRUCTION JOB | CORROSION ENGINEERING APPR BY: _____ COATING TYPE _____ INSPECTION: VISUAL <input type="checkbox"/> JEEP <input type="checkbox"/> TYPE PATCH MATERIAL _____ CONDITION OF PIPE COATING WHEN DELIVERED TO JOB: GOOD <input type="checkbox"/> FAIR <input type="checkbox"/> POOR <input type="checkbox"/> INSULATION CHECKED <input type="checkbox"/> NO. CHECKED _____ | TEST CONN PER STANDARD 7.7.1 NO. PROPOSED 16 NO. INSTALLED _____ NO. TESTED OK (P/S INDICATOR) _____ PLASTIC SEPARATIONS INSTALLED <input type="checkbox"/> CONTINUITY OF COUPLINGS CHECKED <input type="checkbox"/> CASING CHECKED FOR SHORT <input type="checkbox"/> |
| SPONSOR _____ DATE _____ FIELD CHANGE REQUEST DOCUMENT REQUIRED: YES <input type="checkbox"/> NO <input type="checkbox"/> TRANSMISSION DESIGN DOCUMENT REQUIRED: YES <input type="checkbox"/> NO <input type="checkbox"/> | SUPERVISOR BLOCK SUPERVISOR OR CONTRACTOR _____ RECORDED BY _____ DATE STARTED _____ DATE PLACED IN SERVICE _____ TESTED BY _____ DATE COMPLETED _____ PERMIT NO. _____ | |

| | |
|---|--|
| FIELD PRESSURE TEST ALL PIPELINES REQUIRED TESTING BEFORE PLACING INTO SERVICE. PRESSURE CHARTS AND FORMS SHOULD BE FORWARDED TO GAS ENGINEERING AND PLANNING REQUIRED TEST PRESSURE RANGE: MIN 90 PSIG TO MAX 100 PSIG HOURS 24 MEDIUM AIR TESTED BY _____ DATE _____ | UTILITY LOCATION CONTACTS TELEPHONE: 513-533-3154 ELECTRIC: 513-421-9500 SAN. SEWER: 859-578-7460 STORM SEWER: 859-578-7460 WATER: 859-441-0482 CABLE T.V.: 859-431-0300 MUNICIPALITY: 859-859-3666 |
| | GAS CONTACTS CONSTRUCTION: D WESTENBURG (W): 513-287-2588 ENGINEERING SPONSOR: D. BRODBECK (W): 513-287-1001 (C): 513-659-1450 |

CPCN Filing
April, 2008
Module 380

| | | | | | | |
|---------------------------|-----------|---------|--|--------------|-----|----------|
| INSTALLATION | WORKCODES | W. O. # | MOD 380 MAIN REPLACEMENT NEWPORT, CAMPBELL CO., KY | DRAWN | EMS | 7-20-08 |
| ABANDONMENT | G0783803 | C8046 | | CHECKED | BNP | 11-10-07 |
| RENEW SERVICE M-C | R0783803 | | | APPROVED | BNP | 11-10-07 |
| RENEW SERVICE C-M | MCO783803 | | | CLOSED BY | | |
| RELOCATE METER | CM0783803 | | | EST. FOOTAGE | | 8364' |
| MAP NO. S 0 1 E 0 1 - 1 9 | | | DRAWING NO. 0 7 - 8 3 8 0 - 3 | PASSPORT # | | 848805 |

REVISIONS



- P19 TW1
1 INSTALL 538' OF 2" PL - IP
- P19 TW1
2 INSTALL 502' OF 2" PL - IP
- P27 TW1
3 INSTALL 488' OF 6" PL - SP
- P22 TW1
4 INSTALL 486' OF 4" PL - SP
- P22 TW1
5 INSTALL 478' OF 4" PL - SP
- P19 TW1
6 INSTALL 501' OF 2" PL - IP
- P22 TW1
7 INSTALL 556' OF 4" PL - SP
- P22 TW1
8 INSTALL 467' OF 4" PL - SP
- P5
9 INSTALL 1100' OF 8" SWPC - SP
- P22 TW1
10 INSTALL 329' OF 4" PL - SP
- P22 TW1
11 INSTALL 333' OF 4" PL - IP
- P4
12 INSTALL 582' OF 6" SWPC - SP
- P27 TW1
13 INSTALL 381' OF 6" PL - SP
- P27 TW1
14 INSTALL 435' OF 6" PL - SP
- P27 TW1
15 INSTALL 579' OF 6" PL - SP
- P27 TW1
16 INSTALL 221' OF 6" PL - SP
- P5
17 INSTALL 459' OF 8" SWPC - SP

PIPE SHEET

ALL PIPE TO BE DIRECT BURY UNLESS OTHERWISE NOTED.
DETAILS MAY HAVE SMALL AMOUNTS OF FOOTAGE LISTED.

REVISIONS

MAIN MATERIAL LIST

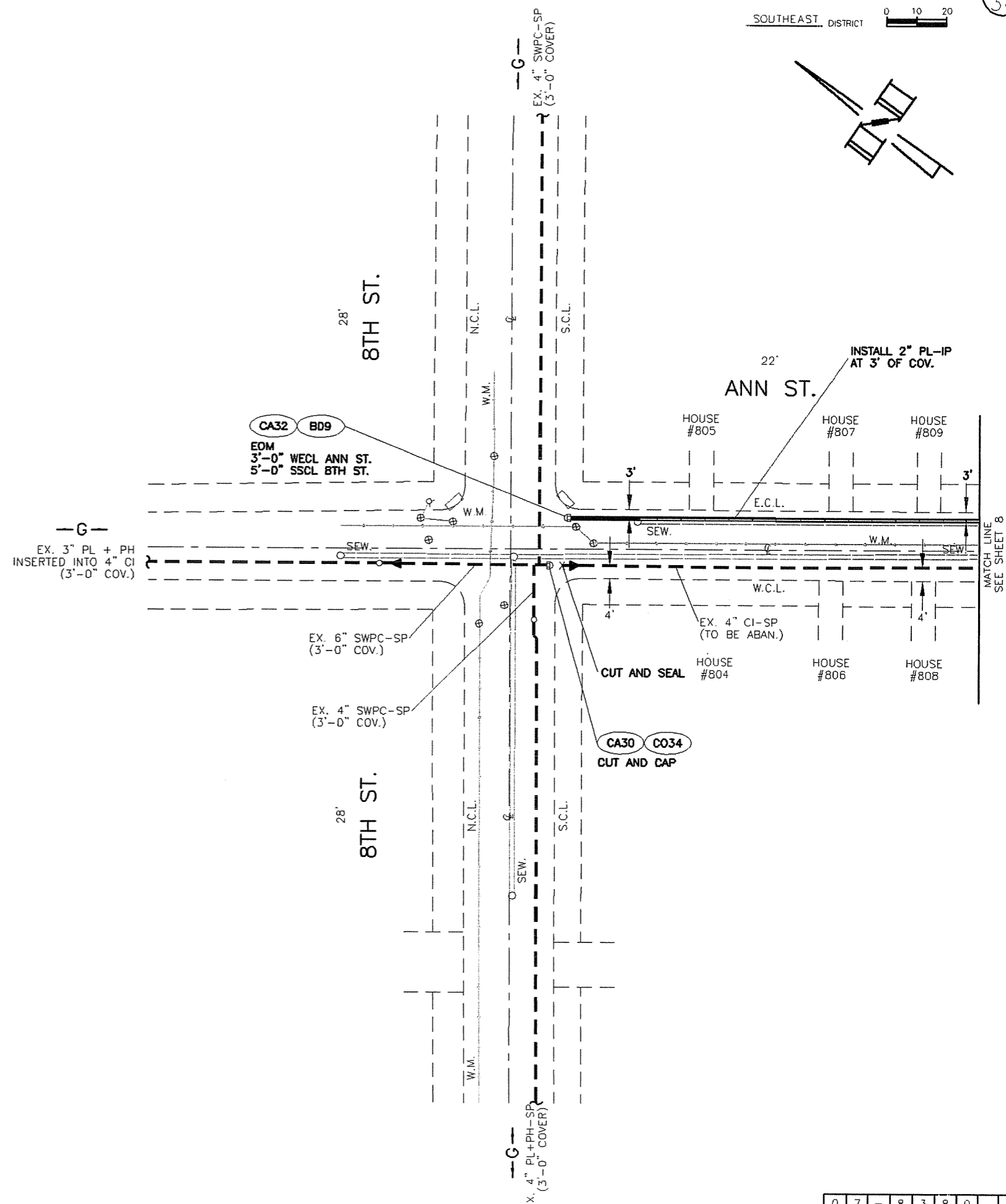
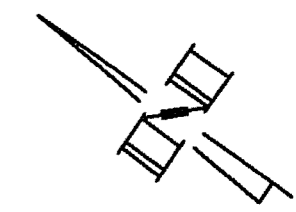
| ITEM | DESCRIPTION | STOCK NO. | EST. | ACTUAL |
|-------|---|------------|------|--------|
| 4PLDR | | | 5 | |
| 4PLDR | 3/4" BRASS CAP | 0050093089 | 5 | |
| 4PLDR | 4" x 1" ELECTROFUSION TEE | 0000903923 | 5 | |
| 4PLDR | 1" x 3/4" PL-BRASS TRANSITION FITTING | 0000520028 | 5 | |
| 4PLDR | 4" IPS BUTT FUSION TEE | 0050057867 | 5 | |
| 4PLDR | 1" - 90 DEG. BUTT FUSION ELL | 0050088393 | 5 | |
| 4PLDR | ROUND VALVE BOX | 0050057322 | 5 | |
| 4PLDR | ROUND VALVE BOX LID | 0050057324 | 5 | |
| 4PLDR | 1" ELECTROFUSION COUPLING | 0050057411 | 5 | |
| 4PLDR | 4" IPS BUTT FUSION CAP | 0050057347 | 5 | |
| 6PLDR | | | 1 | |
| 6PLDR | 6" x 1" ELECTROFUSION TEE | 0000903927 | 1 | |
| 6PLDR | 6" IPS BUTT FUSION CAP | 0050088404 | 1 | |
| 6PLDR | 3/4" BRASS CAP | 0050093089 | 1 | |
| 6PLDR | 1" x 3/4" PL-BRASS TRANSITION FITTING | 0000520028 | 1 | |
| 6PLDR | ROUND VALVE BOX | 0050057322 | 1 | |
| 6PLDR | ROUND VALVE BOX LID | 0050057324 | 1 | |
| 6PLDR | 1" ELECTROFUSION COUPLING | 0050057411 | 1 | |
| 6PLDR | 1" - 90 DEG. BUTT FUSION ELL | 0050088393 | 1 | |
| 6PLDR | 6" IPS BUTT FUSION TEE | 0050088411 | 1 | |
| 4STDR | | | 1 | |
| 4STDR | 3/4" SCREW CAP | 0050056255 | 1 | |
| 4STDR | ROUND VALVE BOX | 0050057322 | 1 | |
| 4STDR | ROUND VALVE BOX LID | 0050057324 | 1 | |
| 4STDR | 3/4" COUPLING | 0050056424 | 1 | |
| 4STDR | 17# ANODE | 0050056181 | 1 | |
| 4STDR | 4" SWPC PIPE | 0050056062 | 1 | |
| 4STDR | 3/4" PIPE STEEL (18"-22") | 0050056028 | 1 | |
| 4STDR | 1" THREAOLET | 0050057180 | 1 | |
| 4STDR | 4" BUTT WELD CAP | 0050057339 | 1 | |
| 4STDR | 4" BUTT WELD TEE | 0050057886 | 1 | |
| 4STDR | 1" x 3/4" SYPHON COUPLING | 0050057466 | 1 | |
| 4STDR | 2 1/2" x 3/4" NIPPLE | 0050056730 | 1 | |
| AN3 | 17# CALVOMAG | 0050056182 | 19 | |
| B09 | ROUND VALVE BOX | 0050057322 | 23 | |
| B09 | ROUND VALVE BOX LID | 0050057324 | 23 | |
| CA24 | 6"x4" S-PL REDUCING COUPLING | 0050057489 | 1 | |
| CA28 | 4" IPS BUTT FUSION CAP | 0050057347 | 4 | |
| CA32 | 2" IPS PURGE POINT FITTING | 0050057593 | 3 | |
| CO34 | 6" COUPLING #711 S-PL W/STIFFNER | 0050057436 | 3 | |
| CO3 | 4" COUPLING #38 S-S NON-INS | 0050057418 | 2 | |
| CO5 | 8" COUPLING #38 S-S NON-INS | 0050057420 | 1 | |
| CO6 | 12" COUPLING #38 S-S NON-INS | 0050057422 | 1 | |
| CO12 | 12" COUPLING #39 S-S INS | 0050057460 | 2 | |
| CO16 | 6" COUPLING #39-62 C-S INS | 0050057443 | 1 | |
| CO24 | 6" S X 4" PL REDUCING COUPLING W/ STIFFENER | 0050057855 | 2 | |
| CO30 | 6" ELECTROFUSION COUPLING | 0050091357 | 17 | |
| CO33 | 4" COUPLING #711 S-PL W/STIFFENER | 0050057434 | 11 | |
| CO39 | 2" ELECTROFUSION COUPLING | 0050057409 | 2 | |
| CO41 | 4" ELECTROFUSION COUPLING | 0050057407 | 12 | |
| CO47 | 8" ELECTROFUSION COUPLING | 0050092525 | 2 | |
| CO49 | 8" COUPLING #711 S-S NON-INS | 0050092528 | 1 | |
| EL3 | 4" - 90 DEG. L.R. WELD ELL | 0050057539 | 1 | |
| EL5 | 8" - 90 DEG. L.R. WELD ELL | 0050057560 | 2 | |
| EL14 | 4" - 45 DEG. WELD ELL | 0050057537 | 6 | |
| EL15 | 6" - 45 DEG. WELD ELL | 0050057559 | 2 | |
| EL16 | 8" - 45 DEG. WELD ELL | 0050057561 | 2 | |
| EL39 | 4" - 90 DEG. IPS BUTT FUSION ELL | 0050057555 | 3 | |
| EL43 | 6" - 45 DEG. IPS BUTT FUSION ELL | 0050088405 | 9 | |
| P3 | 4" SWPC PIPE .188 API 5L - GRADE X-42 | 0050105451 | 103 | |

MAIN MATERIAL LIST

| ITEM | DESCRIPTION | STOCK NO. | EST. | ACTUAL |
|------|--|------------|-------|--------|
| P4 | 6" SWPC PIPE .188 API 5L - GRADE X-42 | 0050105452 | 692 | |
| P5 | 8" SWPC PIPE .188 API 5L - GRADE X-42 | 0050105453 | 1,559 | |
| P6 | 12" SWPC PIPE .219 API 5L - GRADE X-42 | 0050105454 | 8 | |
| P19 | 2" PLASTIC PIPE - 500' .216 SDR 11 | 0050056008 | 1,541 | |
| P22 | 4" IPS PLASTIC PIPE - 40' .395 SDR 11.5 | 0050056058 | 2,158 | |
| P27 | 6" IPS PLASTIC PIPE - 40' .491 SDR 13.5 | 0050088398 | 2,694 | |
| P32 | 8" PLASTIC CASING PIPE | 0050056010 | 6 | |
| P36 | 12" IPS PLASTIC PIPE - 40' SDR 13.5 | 0050118108 | 5 | |
| RE3 | 12" X 8" WELD REDUCER .219 WALL | 0050057753 | 2 | |
| RE4 | 8" X 4" WELD REDUCER | 0050057741 | 1 | |
| RE5 | 8" X 6" WELD REDUCER | 0050057751 | 1 | |
| RE7 | 6" X 4" WELD REDUCER | 0050057750 | 2 | |
| RE15 | 6" IPS X 4" IPS BUTT FUSION REDUCER | 0050088410 | 9 | |
| RE18 | 8" IPS X 6" IPS BUTT FUSION REDUCER | 0050092516 | 2 | |
| RE21 | 12" IPS X 8" IPS BUTT FUSION REDUCER | 0050118109 | 1 | |
| ST7 | 6" STIFFENER | 0050088413 | 2 | |
| ST10 | 12" STIFFENER | 0050118103 | 1 | |
| TE3 | 4" WELD TEE | 0050057886 | 1 | |
| TE5 | 8" WELD TEE | 0050057890 | 2 | |
| TE39 | 4" IPS BUTT FUSION TEE | 0050057867 | 1 | |
| TE42 | 6" IPS BUTT FUSION TEE | 0050088411 | 8 | |
| TE48 | 8" IPS BUTT FUSION TEE | 0050092512 | 1 | |
| TE53 | 8" IPS X 2" IPS ELECTROFUSION HIGH VOLUME PUNC | 0050092524 | 3 | |
| TE70 | 4" X 1" ELECTROFUSION TEE | 0000903923 | 6 | |
| TE71 | 6" X 1" ELECTROFUSION TEE | 0000903927 | 10 | |
| TE84 | 12" IPS X 1 1/4" ELECTROFUSION SVC. TEE | 0050118112 | 2 | |
| TF3 | 4" PL-S TRANSITION FITTING | 0050057595 | 4 | |
| TF4 | 6" PL-S TRANSITION FITTING | 0050088407 | 6 | |
| TW1 | TRACER WIRE | 0050079028 | 6,404 | |
| WE13 | 8" X 6" REDUCING BUTT WELDOLET | 0050058136 | 2 | |
| WR2 | 4" HEAT SHRINKABLE WRAP | 0050057843 | 15 | |
| WR3 | 6" HEAT SHRINKABLE WRAP | 0050057844 | 4 | |
| WR4 | 8" HEAT SHRINKABLE WRAP | 0050057846 | 44 | |

RETIREMENT MATERIAL LIST

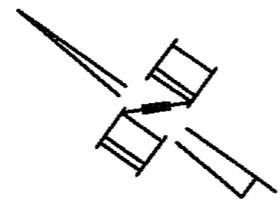
| ITEM | DESCRIPTION | STOCK NO. | EST. | ACTUAL |
|------|-----------------------------------|------------|------|--------|
| CA2 | 3" M.J. CAP | 0050057328 | 3 | |
| CA28 | 4" IPS BUTT FUSION CAP | 0050057347 | 5 | |
| CA3 | 4" M.J. CAP | 0050057329 | 6 | |
| CA30 | 6" IPS BUTT FUSION CAP | 0050088404 | 3 | |
| CA35 | 3" IPS BUTT FUSION CAP | 0050091397 | 2 | |
| CA36 | 16" WELD CAP | 0050094553 | 1 | |
| CA4 | 6" M.J. CAP | 0050057330 | 1 | |
| CA9 | 4" WELD CAP | 0050057339 | 4 | |
| CO32 | 3" COUPLING #711 S-PL W/STIFFENER | 0050057432 | 2 | |
| CO33 | 4" COUPLING #711 S-PL W/STIFFENER | 0050057434 | 6 | |
| CO34 | 6" COUPLING #711 S-PL W/STIFFENER | 0050057436 | 3 | |
| CO58 | 12" IPS COUPLING #711 S-PL | 0050118102 | 2 | |



NOTE:
CONVERT ALL SP SERVICES ON ANN ST.
SOUTH OF 8th ST. TO IP

REVISIONS

36'
COLUMBIA ST.



MATCH LINE
SEE SHEET 9

NOTE:
CONVERT ALL SP SERVICES ON ANN ST. TO IP.

-G-
EX. 4" SWPC+PH-SP
(3'-0" COVER)

EX. 8" CIBS-SP
(3'-0" COV.)

EX. 8" PL-IP
(3'-0" COV.)

E.C.L.

W.C.L.

38'
9TH ST.

N.C.L.

S.C.L.

20'
ANN ST.

INSTALL 2" PL-IP
AT 3' OF COV.

DETAIL "A"
SEE SHEET 24

20'
ANN ST.

INSTALL 2" PL-IP
AT 3' OF COV.

HOUSE
#815

HOUSE
#837

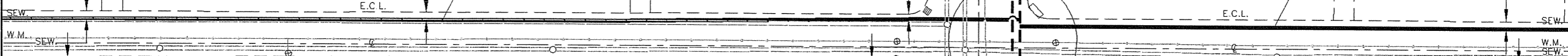
HOUSE
#900

HOUSE
#911

HOUSE
#923

MATCH LINE
SEE SHEET 7

MATCH LINE
SEE SHEET 15



W.C.L.

W.C.L.

HOUSE
#822

EX. 4" CIC-SP
(TO BE ABAN.)

HOUSE
#832

HOUSE
#836

HOUSE
#836

HOUSE
#848

HOUSE
#826

HOUSE
#908

EX. 4" CIC-SP
(TO BE ABAN.)

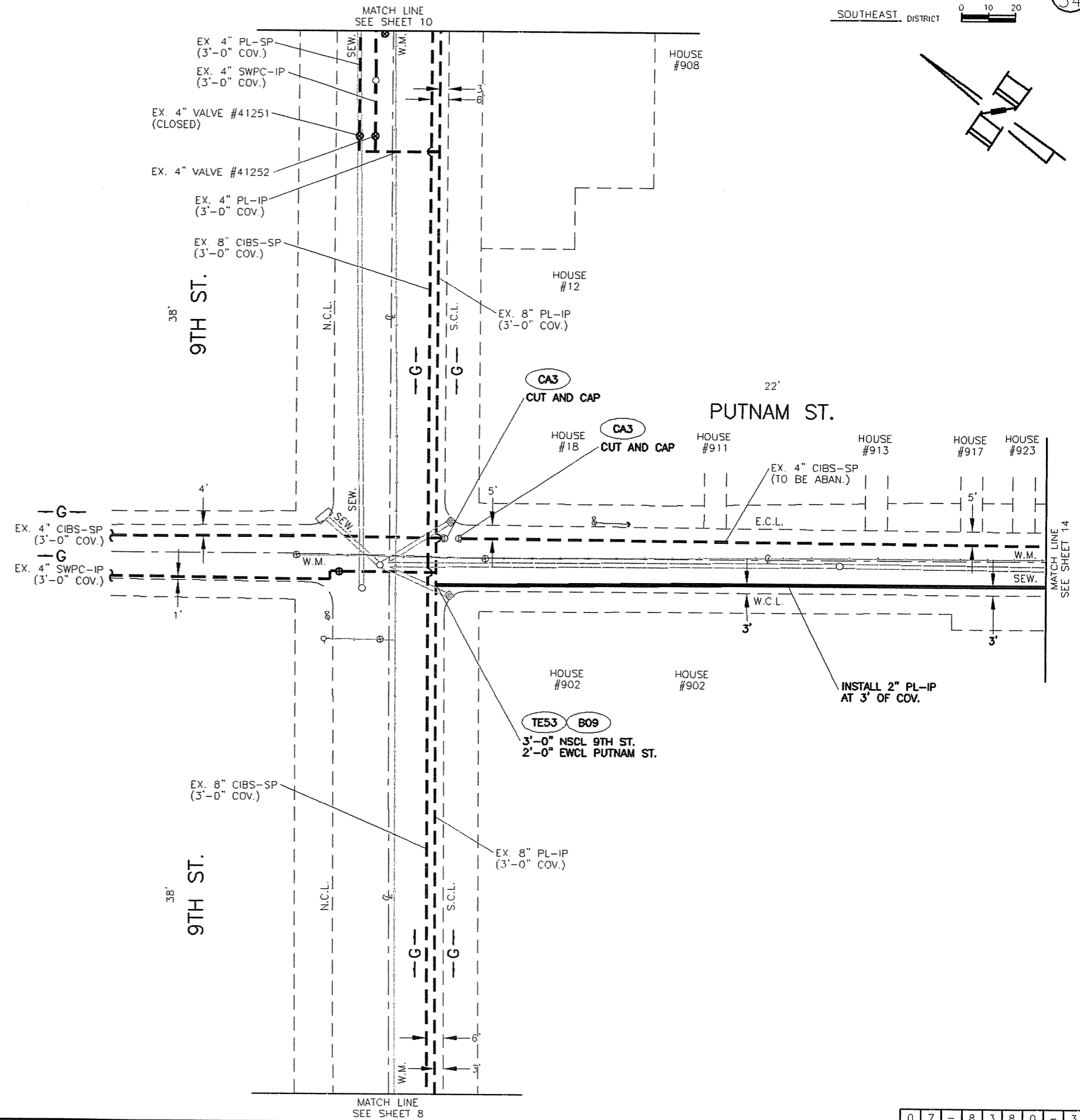
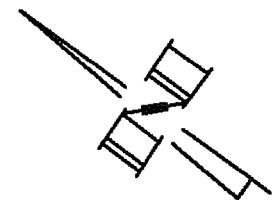
HOUSE
#918

HOUSE
#920

EX. 8" CIBS-SP
(3'-0" COV.)

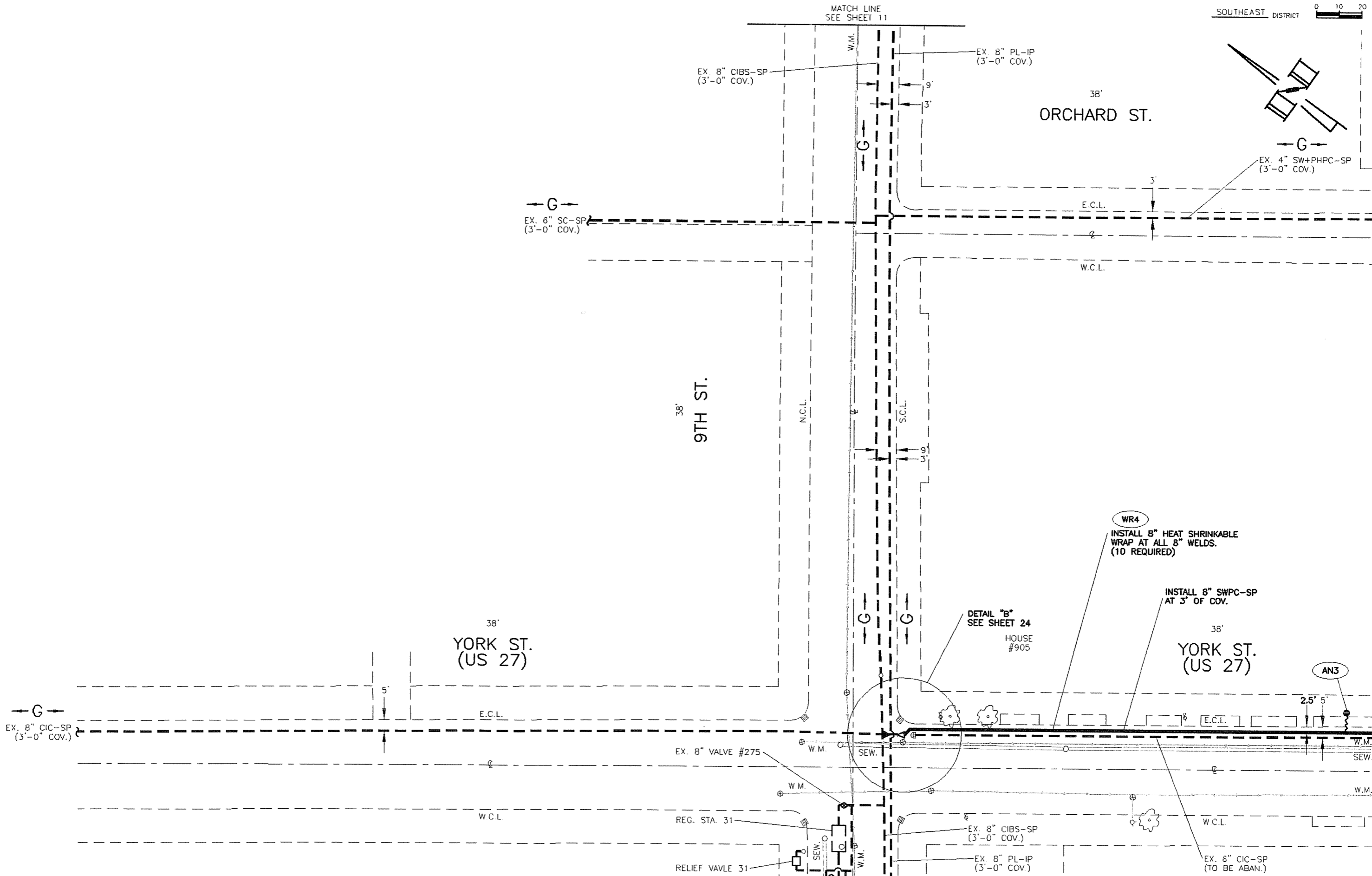
EX. 8" PL-IP
(3'-0" COV.)

REVISIONS

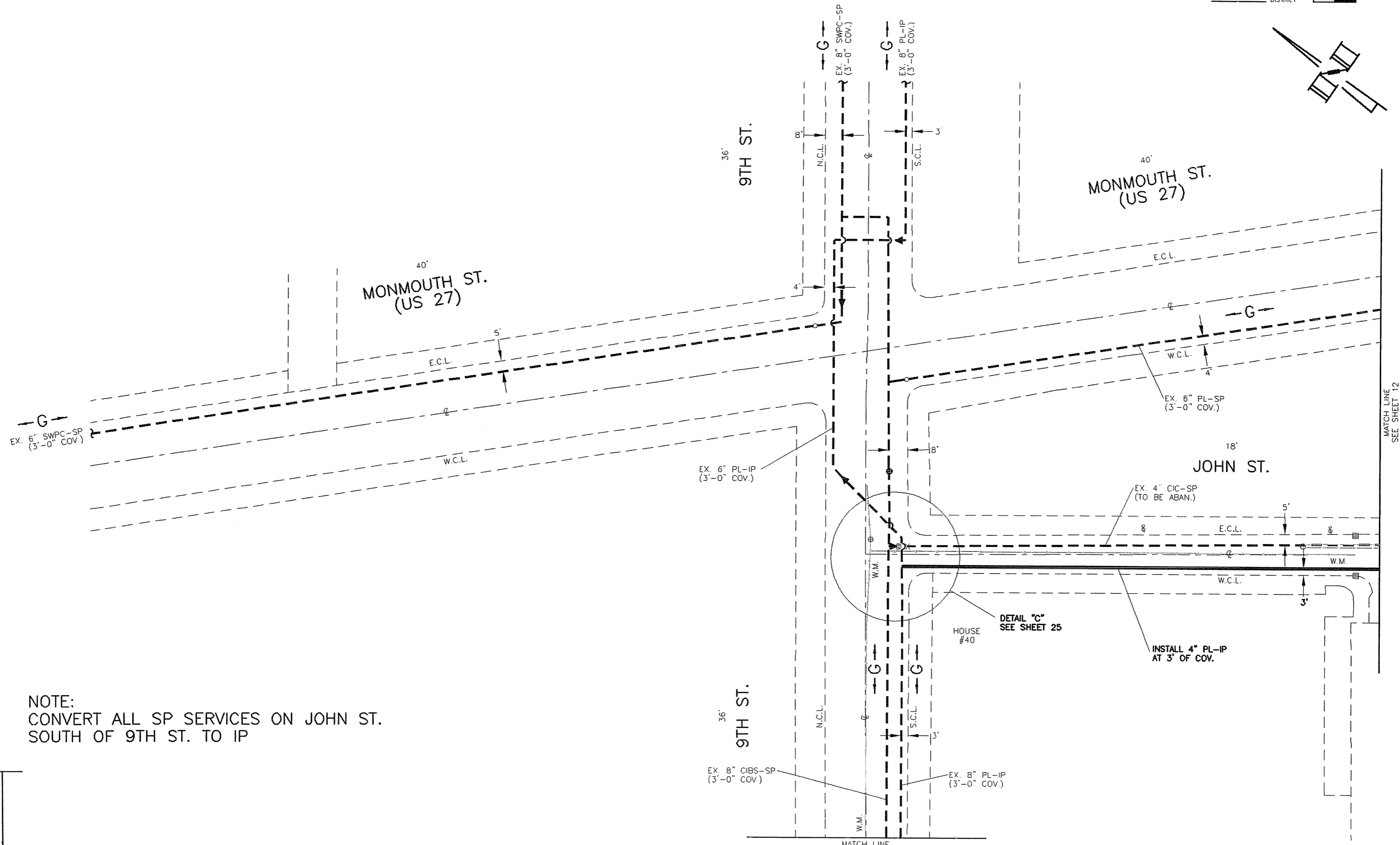
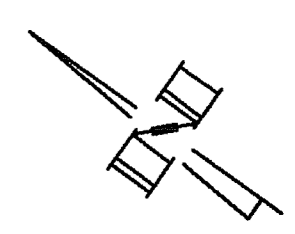


NOTE:
CONVERT ALL SP SERVICES ON PUTNAM ST.
SOUTH OF 9TH ST. TO IP.

REVISIONS



REVISIONS



NOTE:
CONVERT ALL SP SERVICES ON JOHN ST.
SOUTH OF 9TH ST. TO IP

REVISIONS

MATCH LINE
SEE SHEET 12

MATCH LINE
SEE SHEET 10

NOTE:
CONVERT ALL SP SERVICES ON JOHN ST.
NORTH OF 10TH ST. TO IP

40'
MONMOUTH ST.
(US 27)

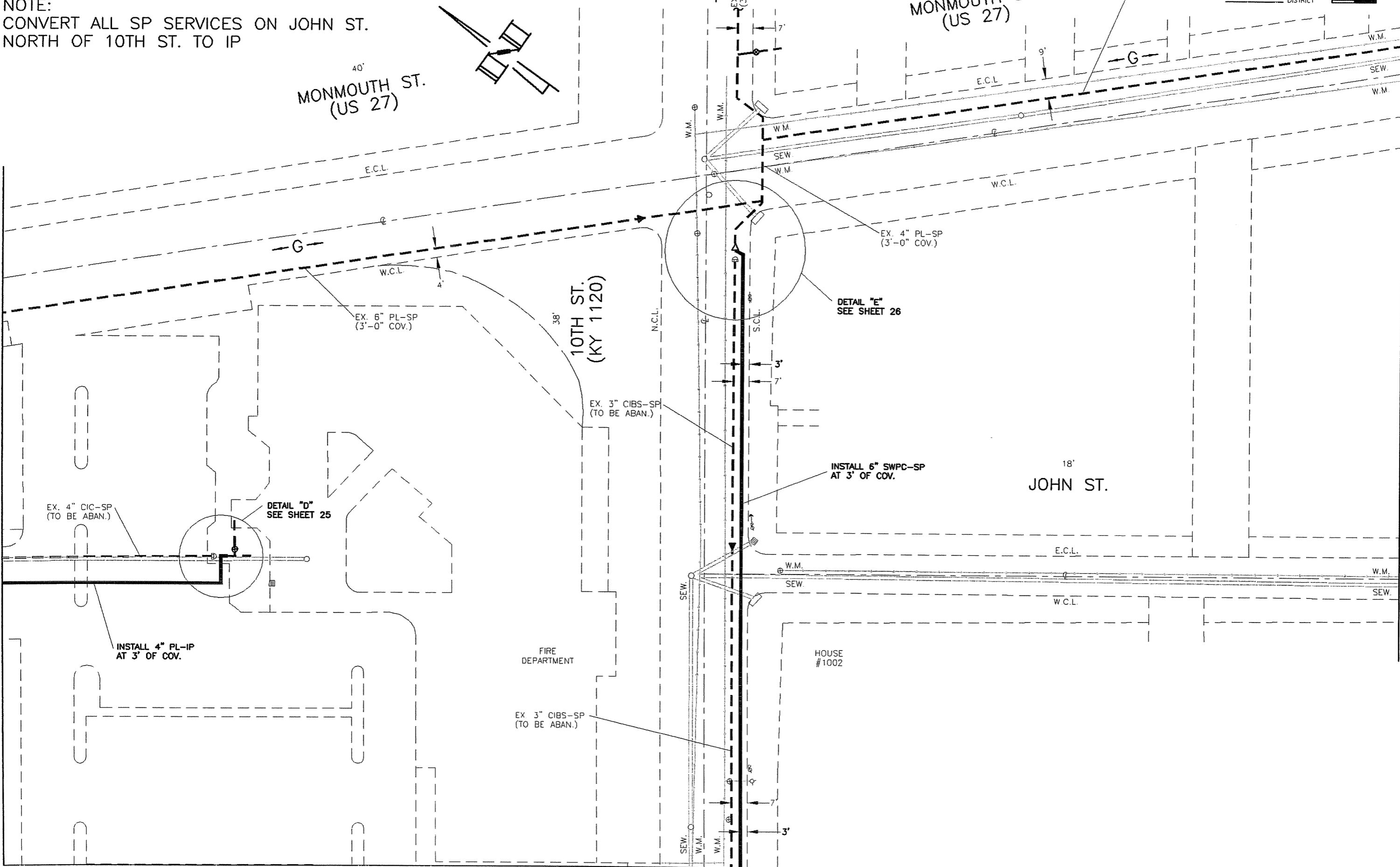
40'
MONMOUTH ST.
(US 27)

38'
10TH ST.
(KY 1120)

18'
JOHN ST.

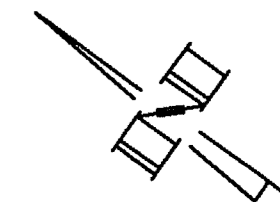
MATCH LINE
SEE SHEET 11

MATCH LINE
SEE SHEET 21



REVISIONS

MATCH LINE
SEE SHEET 13



MATCH LINE
SEE SHEET 12

MATCH LINE
SEE SHEET 14

22'
ORCHARD ST.

22'
ORCHARD ST.

38'
YORK ST.
(US 27)

38'
YORK ST.
(US 27/KY 1120)

38'
10TH ST.
(KY 1120)

INSTALL 6" SWPC-SP
AT 3' OF COV.

INSTALL 6" SWPC-SP
AT 3' OF COV.

INSTALL 6" PL-SP
AT 3' OF COV.

WR4
INSTALL 8" HEAT SHRINKABLE
WRAP AT ALL 8" WELDS.
(18 REQUIRED)

INSTALL 8" SWPC-SP
AT 3' OF COV.

EX. SERVICE M-C
(ID# 483841)
(3'-0" COV.)

EX. 3" CIBS-SP
(TO BE ABAN.)

EX. 4" SW+PHPC-SP
(3'-0" COV.)

EX. 4" SW+PHPC-SP
(3'-0" COV.)

EX. 3" CIBS-SP
(TO BE ABAN.)

DETAIL "F"
SEE SHEET 26

DETAIL "G"
SEE SHEET 27

EX. 6" CIC-SP
(TO BE ABAN.)

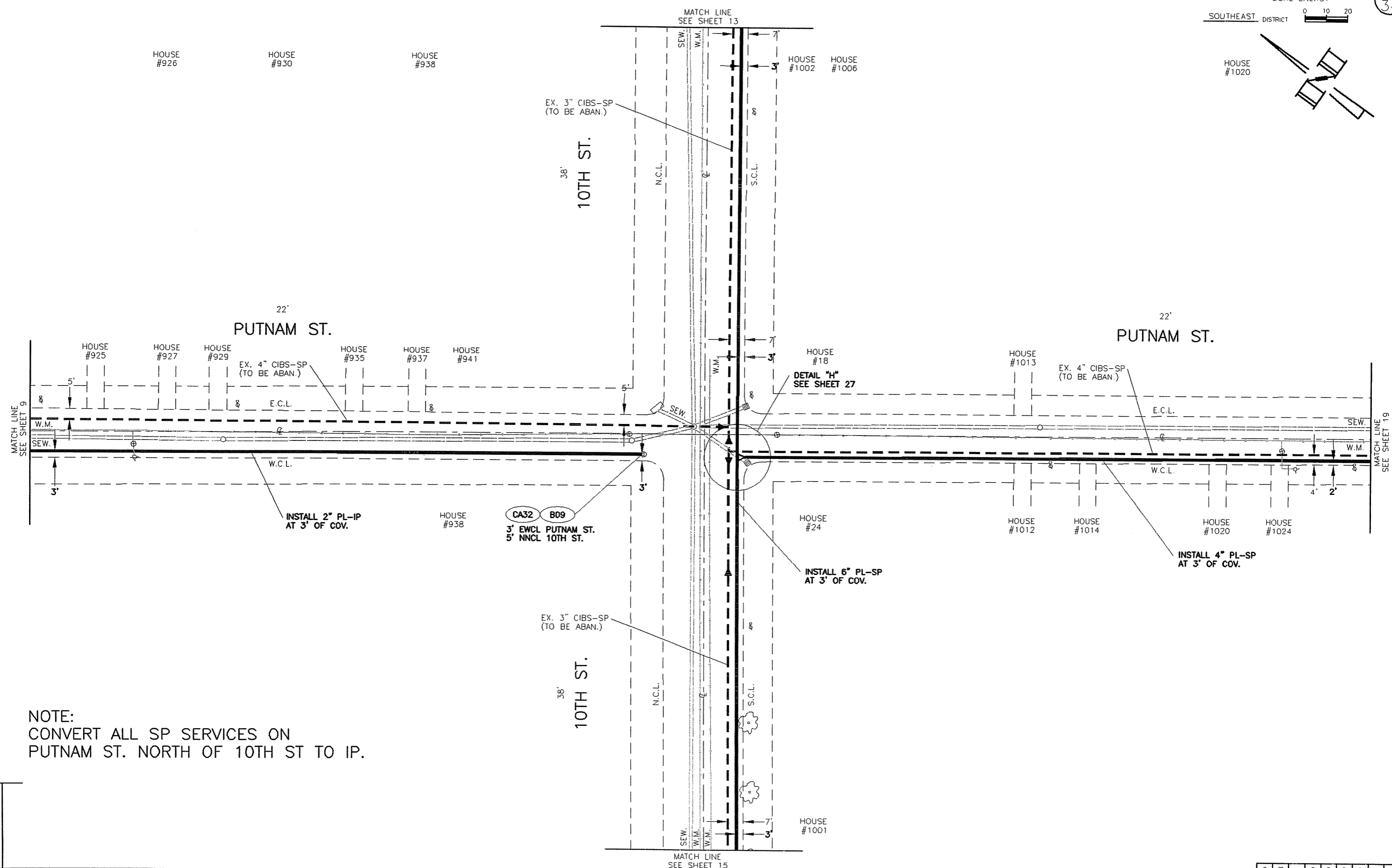
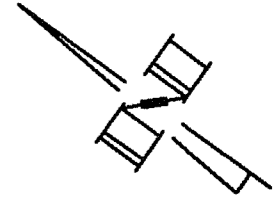
EX. 6" CIC-SP
(TO BE ABAN.)

EX. 3" CIBS-SP
(TO BE ABAN.)

MATCH LINE
SEE SHEET 10

MATCH LINE
SEE SHEET 20

REVISIONS



NOTE:
CONVERT ALL SP SERVICES ON
PUTNAM ST. NORTH OF 10TH ST TO IP.

REVISIONS

36'
COLUMBIA ST.

36'
COLUMBIA ST.

MATCH LINE
SEE SHEET 14

HOUSE
#1001

INSTALL 6" PL-SP
AT 3' OF COV.

E.C.L.

E.C.L.

W.C.L.

W.C.L.

EX. 4" SW+PHPC-SP
(3'-0" COV.)

EX. 4" SWPC-SP
(3'-0" COV.)

DETAIL "1"
SEE SHEET 28

NOTE:
CONVERT ALL SP SERVICES ON
ANN ST. NORTH OF 10TH ST. TO IP.

38'
10TH ST.

EX. 3" CIBS-SP
(TO BE ABAN.)

INSTALL 6" PL-SP
AT 3' OF COV.

CA32 B09
3' EWCL ANN ST.
5' NNCL 10TH ST.

INSTALL 6" PL-SP
AT 3' OF COV.

22'
ANN ST.

INSTALL 2" PL-IP
AT 3' OF COV.

22'
ANN ST.

HOUSE
#923

HOUSE
#925

HOUSE
#941

CO30

HOUSE
#1001

HOUSE
#1005

HOUSE
#1018

HOUSE
#1021

HOUSE
#1023

HOUSE
#920

HOUSE
#922

EX. 4' CIC-SP
(TO BE ABAN.)

TE42 B09

CO30

HOUSE
#130

HOUSE
#1012

EX. 4' CIC-SP
(TO BE ABAN.)

HOUSE
#1014

HOUSE
#1020

HOUSE
#1024

EX. 3" CIBS-SP
(TO BE ABAN.)

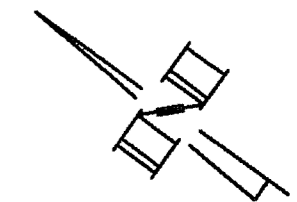
HOUSE
#134

MATCH LINE
SEE SHEET 16

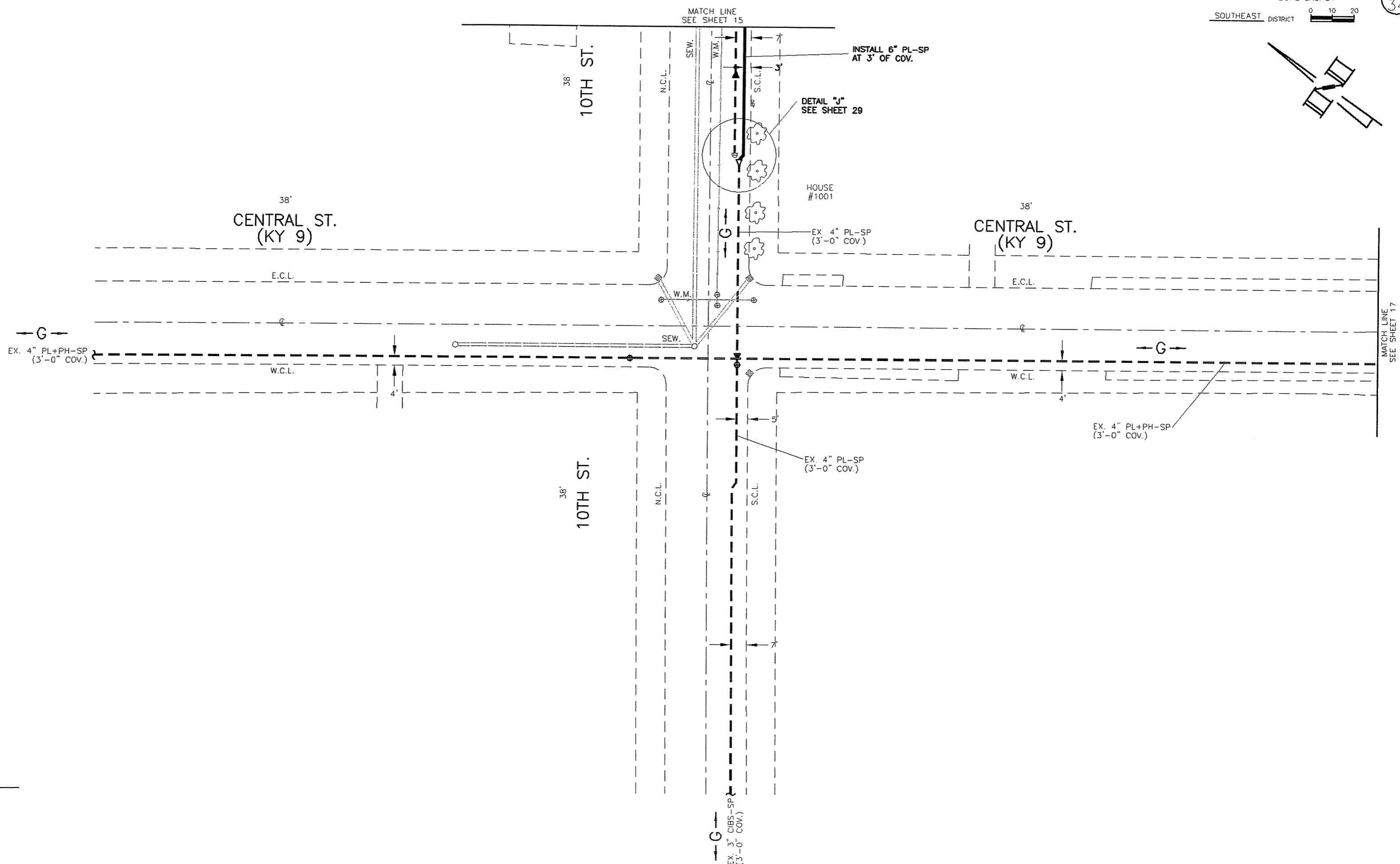
MATCH LINE
SEE SHEET 8

MATCH LINE
SEE SHEET 18

REVISIONS

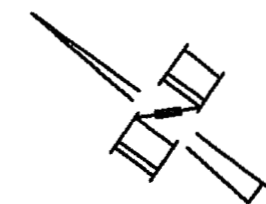


MATCH LINE
SEE SHEET 15



MATCH LINE
SEE SHEET 17

REVISIONS



MATCH LINE
SEE SHEET 18

EX. 3" CIBS-SP
(TO BE ABAN.)

38'
11TH ST.
(KY 1120)

N.C.L.

4'

INSTALL 6" PL-SP
AT 3" OF COV.

DETAIL "K"
SEE SHEET 28

38'
CENTRAL AVE.
(KY 9)

EX. 4" PL-SP
(3'-0" COV.)

38'
CENTRAL AVE.
(KY 9)

E.C.L.

MATCH LINE
SEE SHEET 16

EX. 4" PL+PH-SP
(3'-0" COV.)

W.C.L.

EX. 4" PL+PH-SP
(3'-0" COV.)

W.C.L.

EX. 4" PL-SP
(3'-0" COV.)

38'
11TH ST.
(KY 1120)

N.C.L.

7'

EX. 12" SWPC-SP
(3'-0" COV.)

ECP LINE

REVISIONS

38'
COLUMBIA ST.

38'
COLUMBIA ST.

22'
ANN ST.

22'
ANN ST.

38'
11TH ST.
(KY 1120)

MATCH LINE
SEE SHEET 19

MATCH LINE
SEE SHEET 17

MATCH LINE
SEE SHEET 22

MATCH LINE
SEE SHEET 25

HOUSE #1105

HOUSE #1113

HOUSE #1123

HOUSE #1125

HOUSE #1129

HOUSE #1130

HOUSE #1104

HOUSE #1128

HOUSE #1130

HOUSE #1043

HOUSE #1107

HOUSE #1117

HOUSE #1113

HOUSE #1030

HOUSE #1036

HOUSE #1038

HOUSE #1040

HOUSE #1104

HOUSE #1108

HOUSE #1132

EX. 4" CIBS-SP
(TO BE ABAN.)
EX. 4" DRIP #2343
(TO BE ABAN.)
REMOVE BOX, STEM
AND BURY.

EX. 4" CIBS-SP
(TO BE ABAN.)

EX. 4" SWPC-SP
(3'-0" COV.)

EX. 3" CIBS-SP
(TO BE ABAN.)

INSTALL 6" PL-SP
AT 3' OF COV.

INSTALL 6" SWPC-SP
AT 3' OF COV.

TE42 B09
6' SSCL 11TH ST.
3' WECL ANN ST.

INSTALL 4" PL-SP
AT 3' OF COV.

INSTALL 6" PL-SP
AT 3' OF COV.

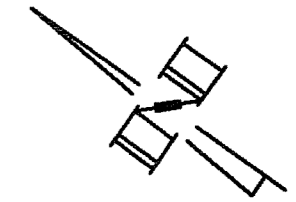
TF4
3' WECL ANN ST.
14' NNCL 11TH ST.
HOUSE #1043
(2-TE71)
INSTALL CONCRETE
RESTRAINT BLOCK
PER STD. 2.1B.40

RE15
TE42 B09
7' EWCL ANN ST.
6' SSCL 11TH ST.

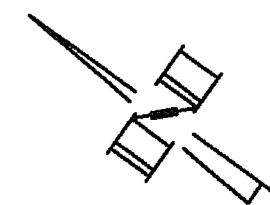
EX. 4" CIC-SP
(TO BE ABAN.)

EX. 3" CIBS-SP
(TO BE ABAN.)

EX. 4" CIBS-SP
(TO BE ABAN.)



REVISIONS



MATCH LINE
SEE SHEET 20

HOUSE
#1044

38'
11TH ST.
(KY 1120)

EX. 12" SWPC-SP
(3'-0" COV.)

22'
PUTNAM ST.

HOUSE
#1037

HOUSE
#1039

22'
PUTNAM ST.

EX. 4" CIBS-SP
(TO BE ABAN.)

EX. 4" CIBS-SP
(TO BE ABAN.)

MATCH LINE
SEE SHEET 14

MATCH LINE
SEE SHEET 22

HOUSE
#1030

HOUSE
#1036

HOUSE
#1038

INSTALL 4" PL-SP
AT 3' OF COV.

HOUSE
#26

HOUSE
#1114

HOUSE
#1116

INSTALL 4" PL-SP
AT 3' OF COV.

HOUSE
#1124

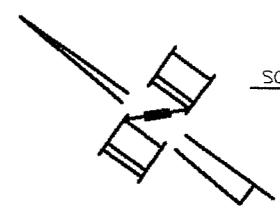
EX. 4" CIBS-SP
(TO BE ABAN.)

INSTALL 6" PL-SP
AT 3' OF COV.

38'
11TH ST.
(KY 1120)

MATCH LINE
SEE SHEET 18

REVISIONS



MATCH LINE
SEE SHEET 21

22'
ORCHARD ST.

22'
ORCHARD ST.

38'
YORK ST.
(US 27/KY 1120)

38'
YORK ST.

AN3
38'
11TH ST.
(US 27)

MATCH LINE
SEE SHEET 13

WR4
INSTALL 8" HEAT SHRINKABLE
WRAP AT ALL 8" WELDS.
(16 REQUIRED)

INSTALL 8" SWPC-SP
AT 3' OF COV.

HOUSE
#1029

HOUSE
#1045

DETAIL "N"
SEE SHEET 32

INSTALL 4" PL-SP *
AT 3' OF COV.

* FIELD TO VERIFY, IF NO
SERVICES DO NOT INSTALL

4PLDR CA28
INSTALL 4" PL DRIP
PER STD. 2.18.53
2.5' WECL YORK ST.
340' SSCL 11TH ST.

EX. 6" CIC-SP
(TO BE ABAN.)

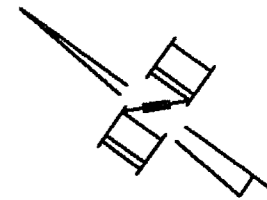
EX. 12" SWPC-SP
(3'-0" COV.)

EX. 4" CIBS-SP
(TO BE ABAN.)

EX. 4" SIPHON #1769
(TO BE ABAN.)
REMOVE BOX, STEM
AND BURY.

FENCE

REVISIONS



18'
JOHN ST.

36'
11TH ST.
(US 27)

EX. 4" SW+PHPC-SP *
(3'-0" COV.)

* FIELD TO VERIFY, IF NO
SERVICES ABANDON MAIN

INSTALL 8" SWPC-SP
AT 3' OF COV.

36'
11TH ST.
(US 27)

AN3

← G →

EX. 12" SWPC-SP
(3'-0" COVER)

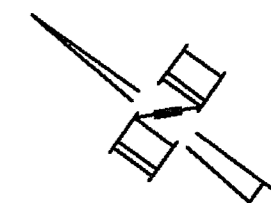
DETAIL "P"
SEE SHEET 34

EX. 3" CIBS-SP
(TO BE ABAN.)

MATCH LINE
SEE SHEET 12

MATCH LINE
SEE SHEET 20

REVISIONS



MATCH LINE
SEE SHEET 22

HOUSE
#1136

32'
12TH ST.

INSTALL 4" PL-SP
AT 3' OF COV.

22'
HOUSE
#1147
ANN ST.

4PLDR CA2B
INSTALL 4" PL DRIP
PER STD. 2.18.53
7' EWCL ANN ST.
5' NNCL 12TH ST.

EX. 4" DRIP #2034
(TO BE ABAN.)
REMOVE BOX, STEM
AND BURY.

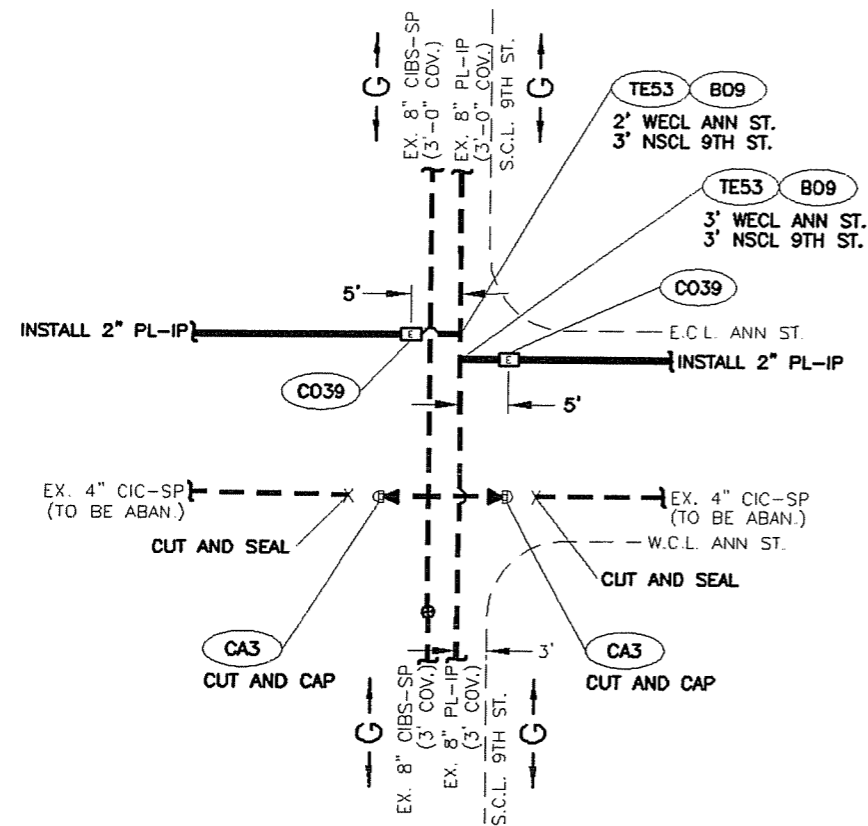
EX. 4" CIBS-SP
(TO BE ABAN.)

HOUSE
#1140

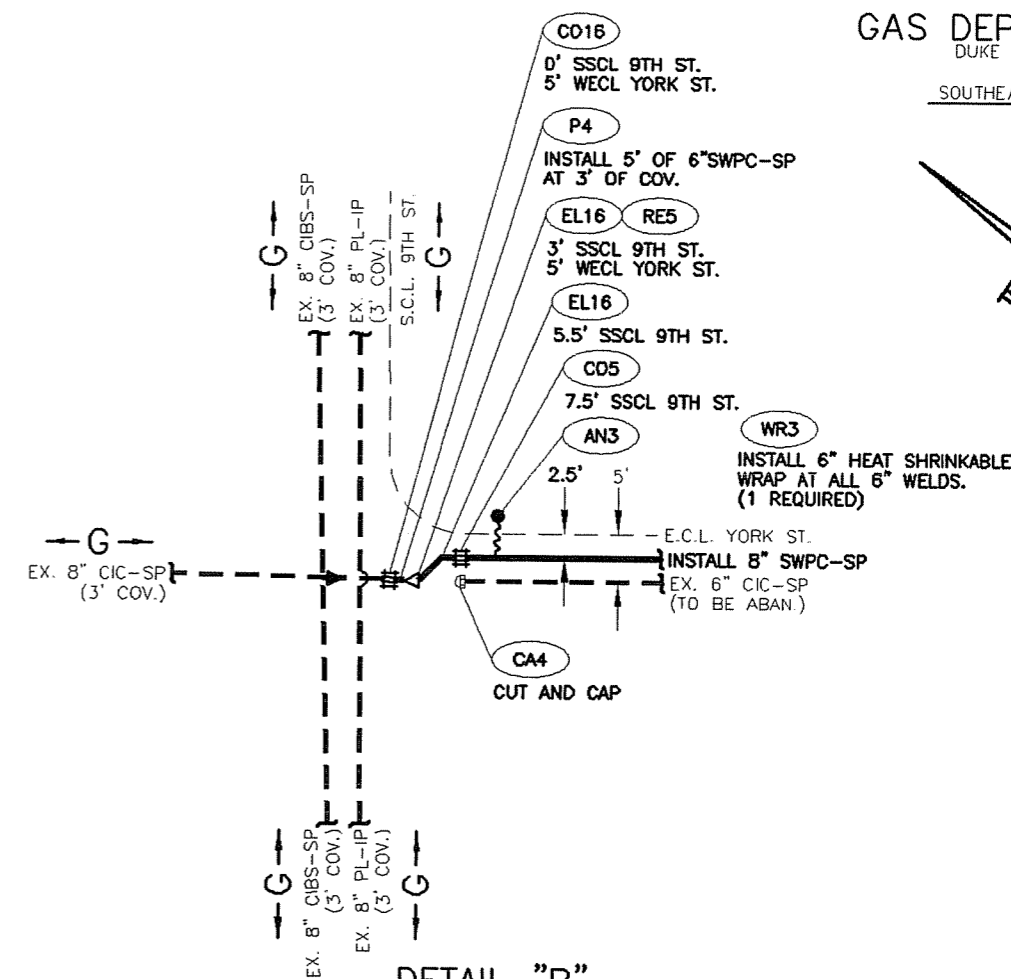
32'
12TH ST.

MATCH LINE
SEE SHEET 18

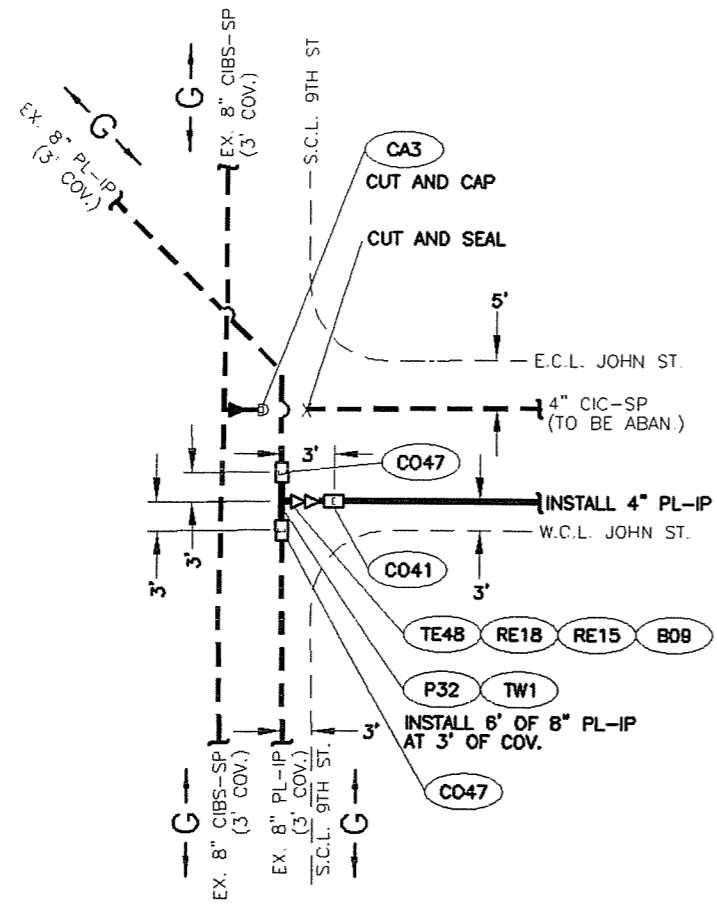
REVISIONS



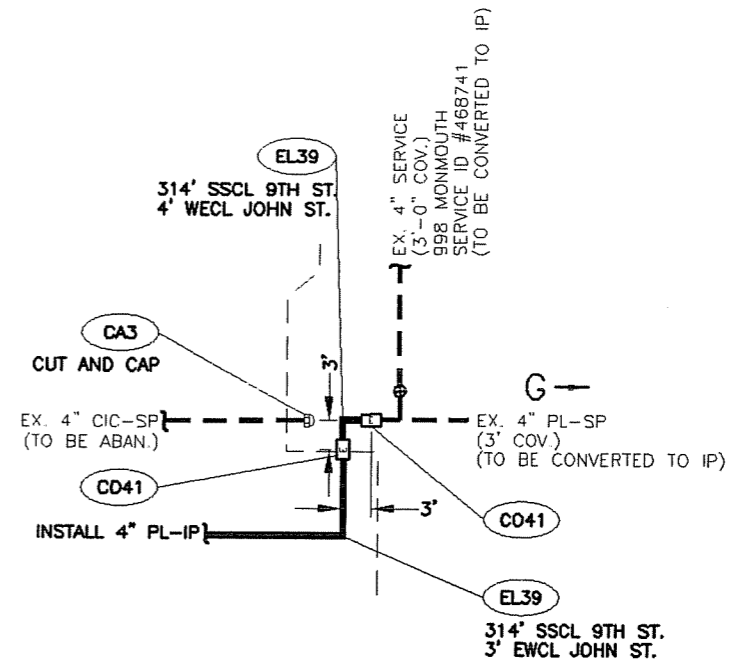
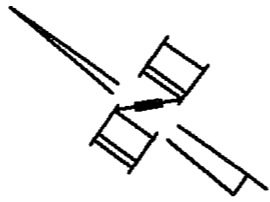
DETAIL "A"
(FROM SHEET 8)
N.T.S.



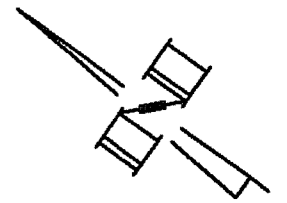
DETAIL "B"
(FROM SHEET 10)
N.T.S.

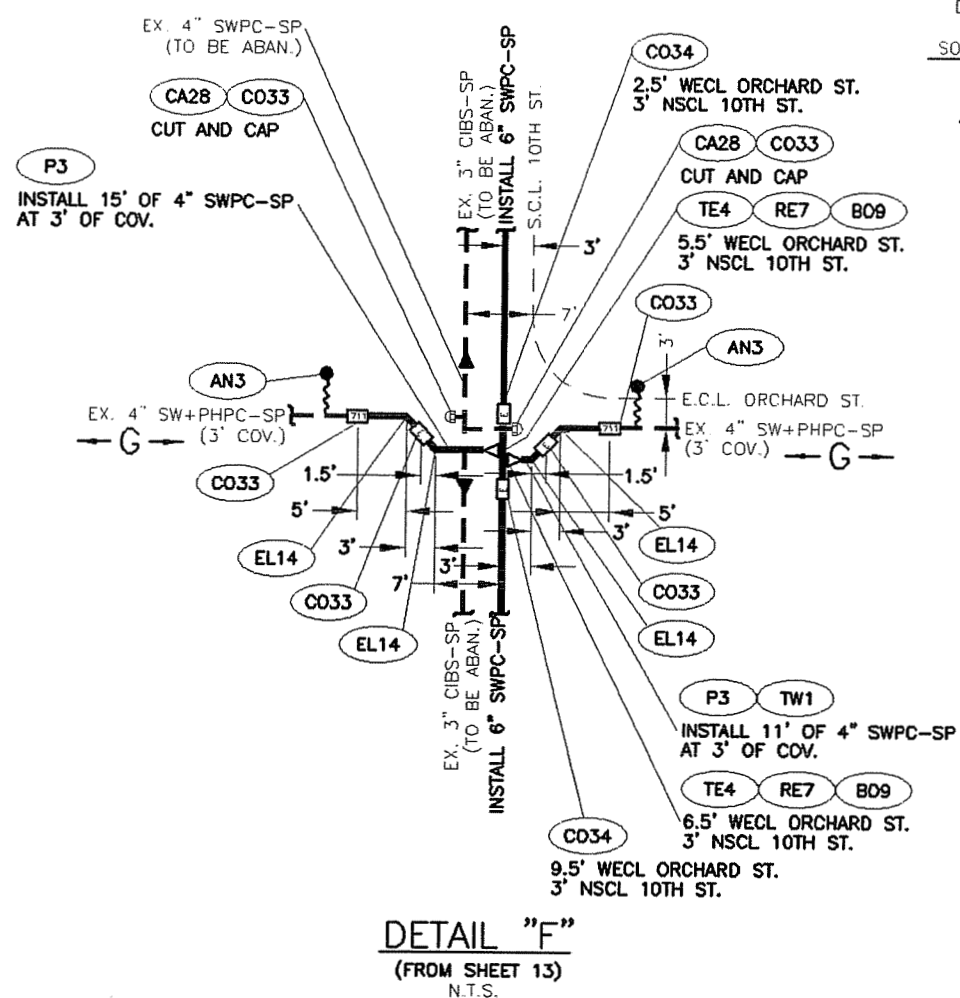
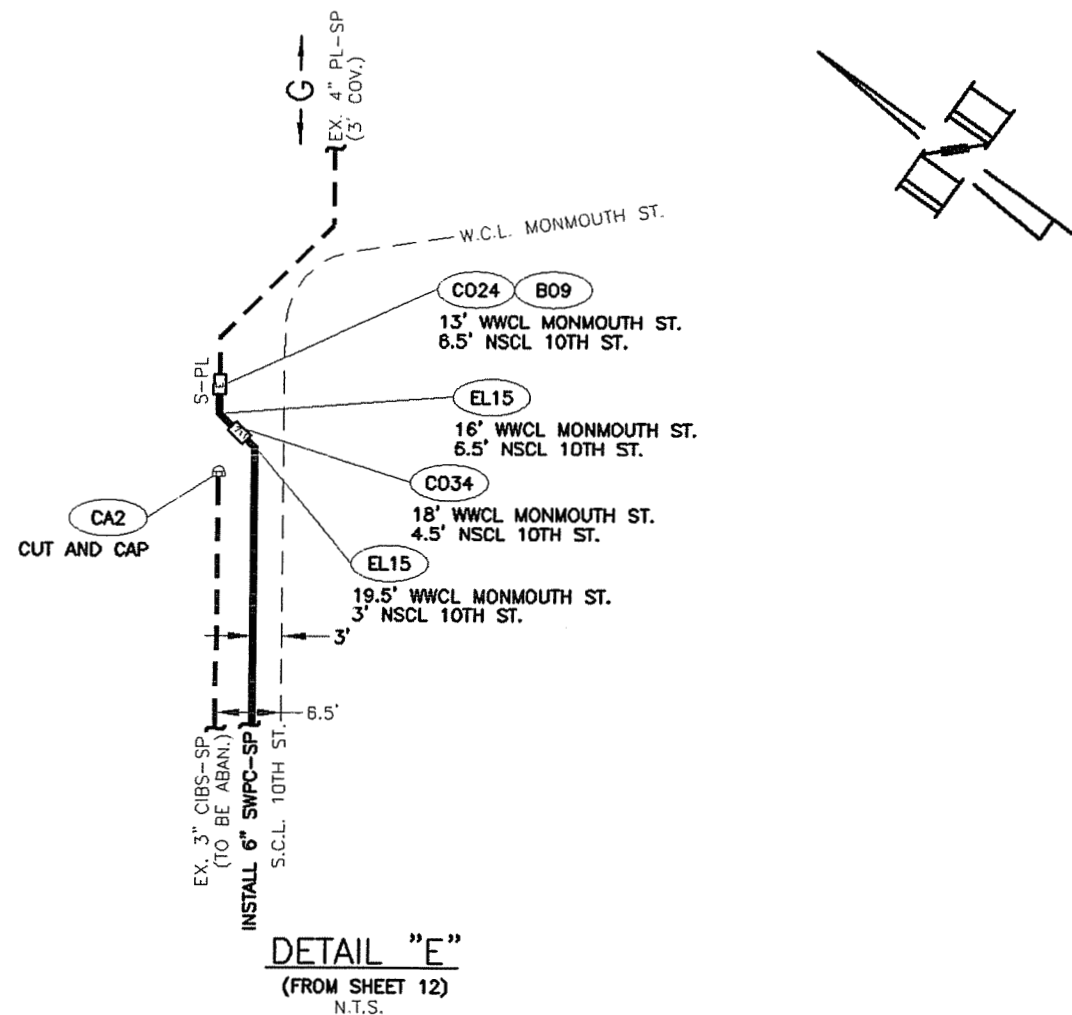


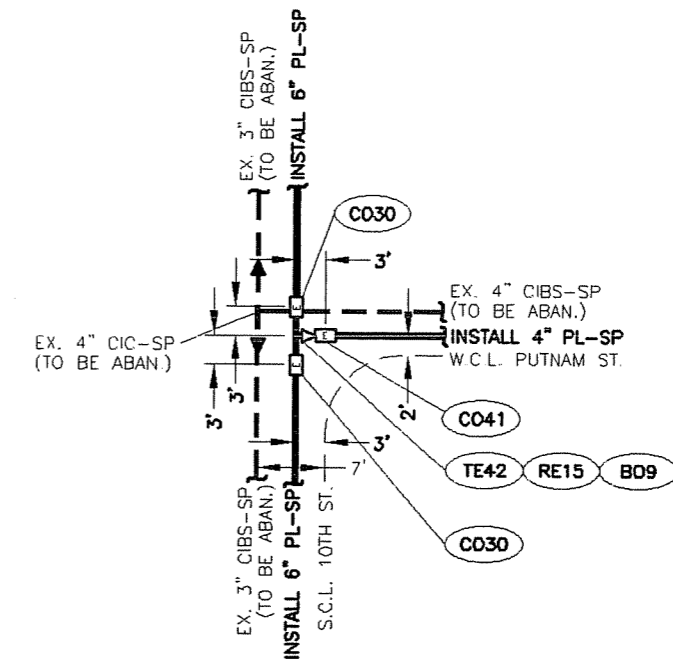
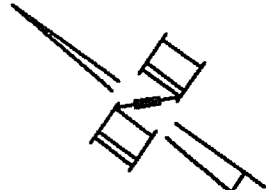
DETAIL "C"
(FROM SHEET 11)
N.T.S.



DETAIL "D"
(FROM SHEET 12)
N.T.S.

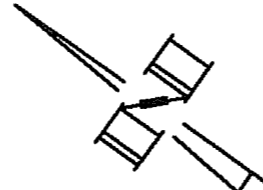
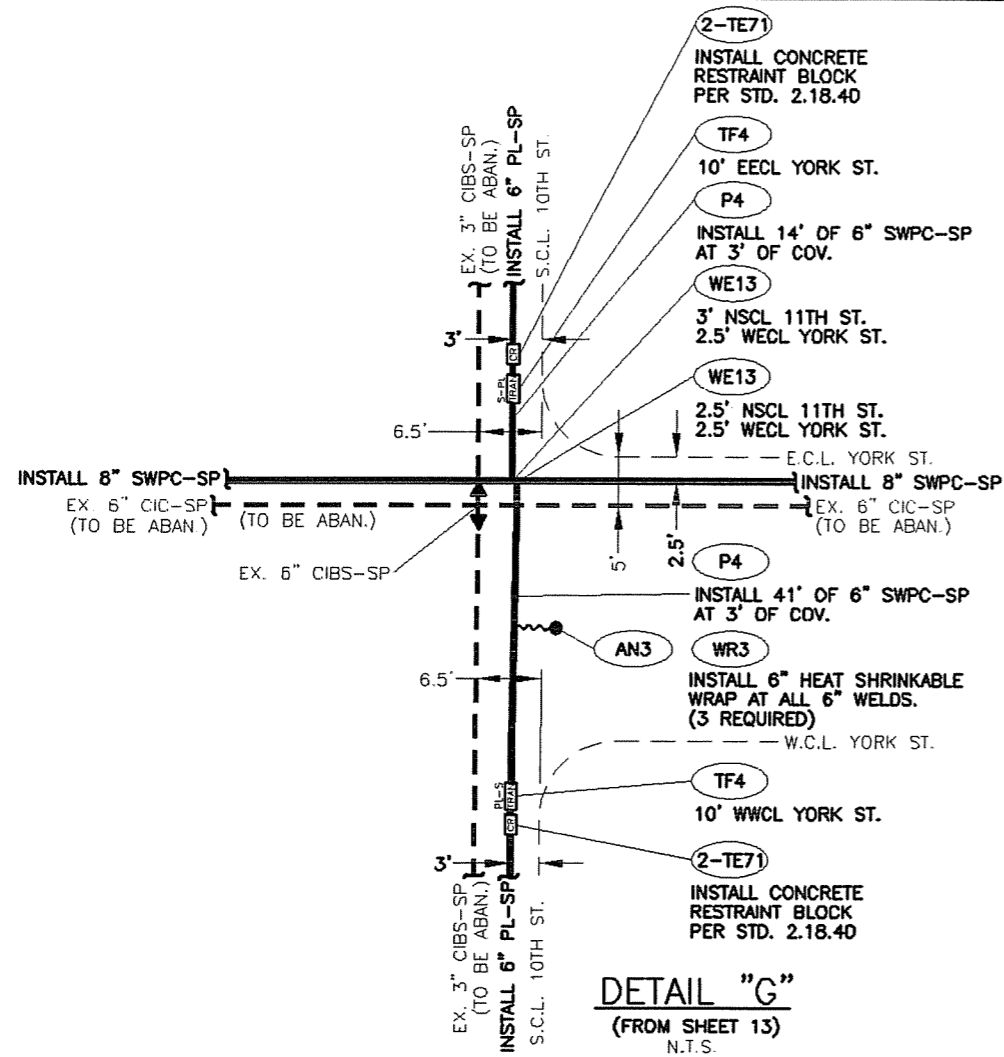


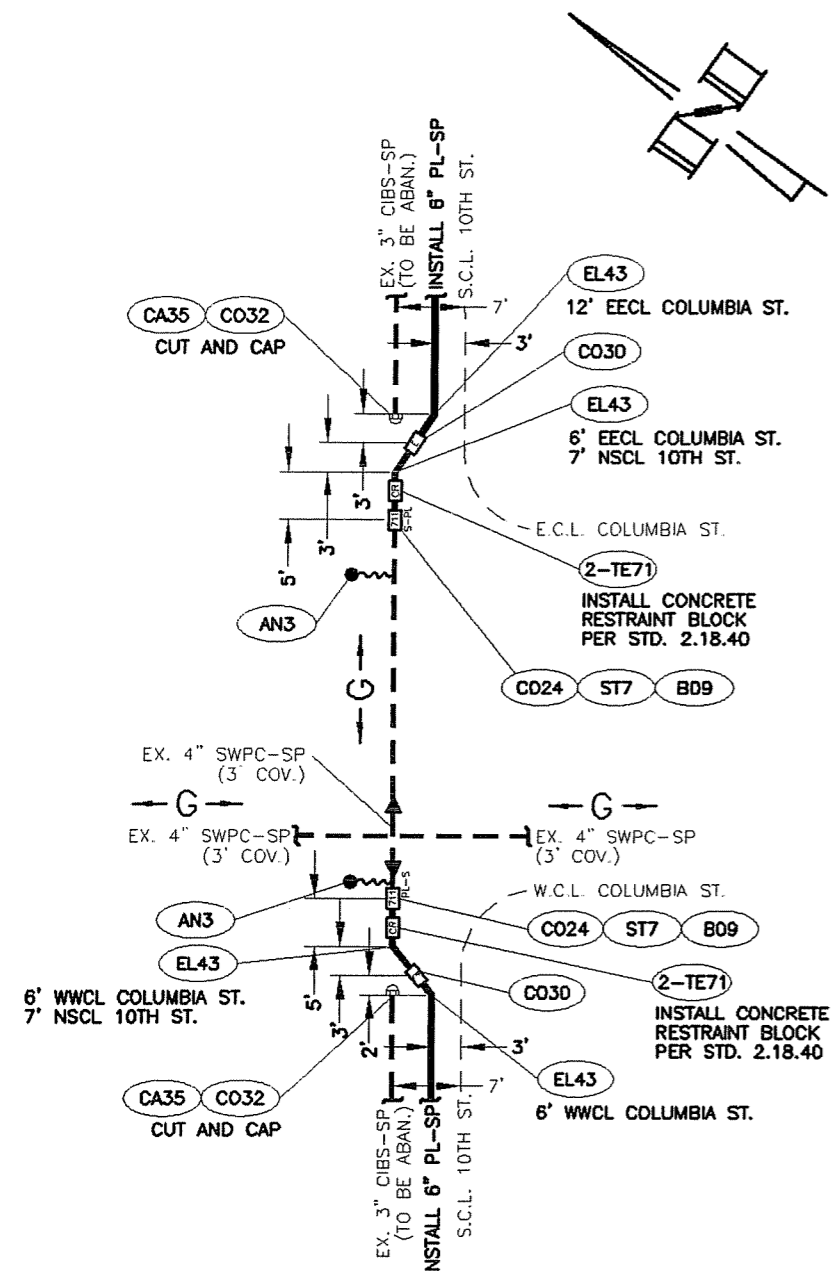




DETAIL "H"
(FROM SHEET 14)
N.T.S.

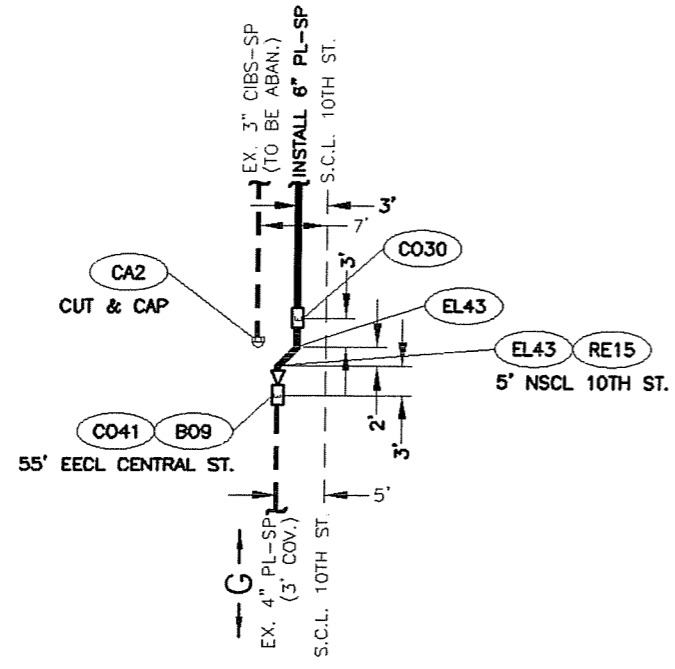
DETAIL "G"
(FROM SHEET 13)
N.T.S.



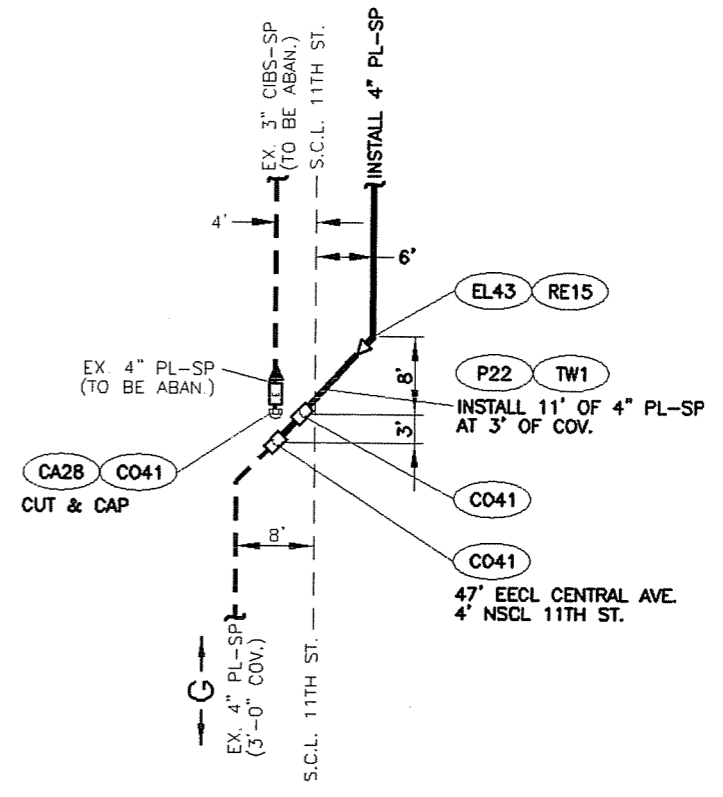
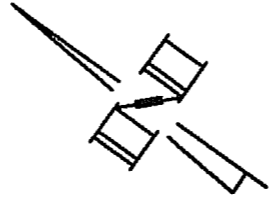


DETAIL "I"
(FROM SHEET 15)
N.T.S.

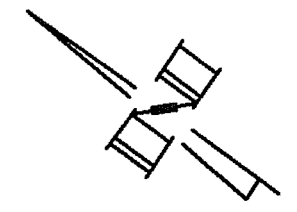
REVISIONS

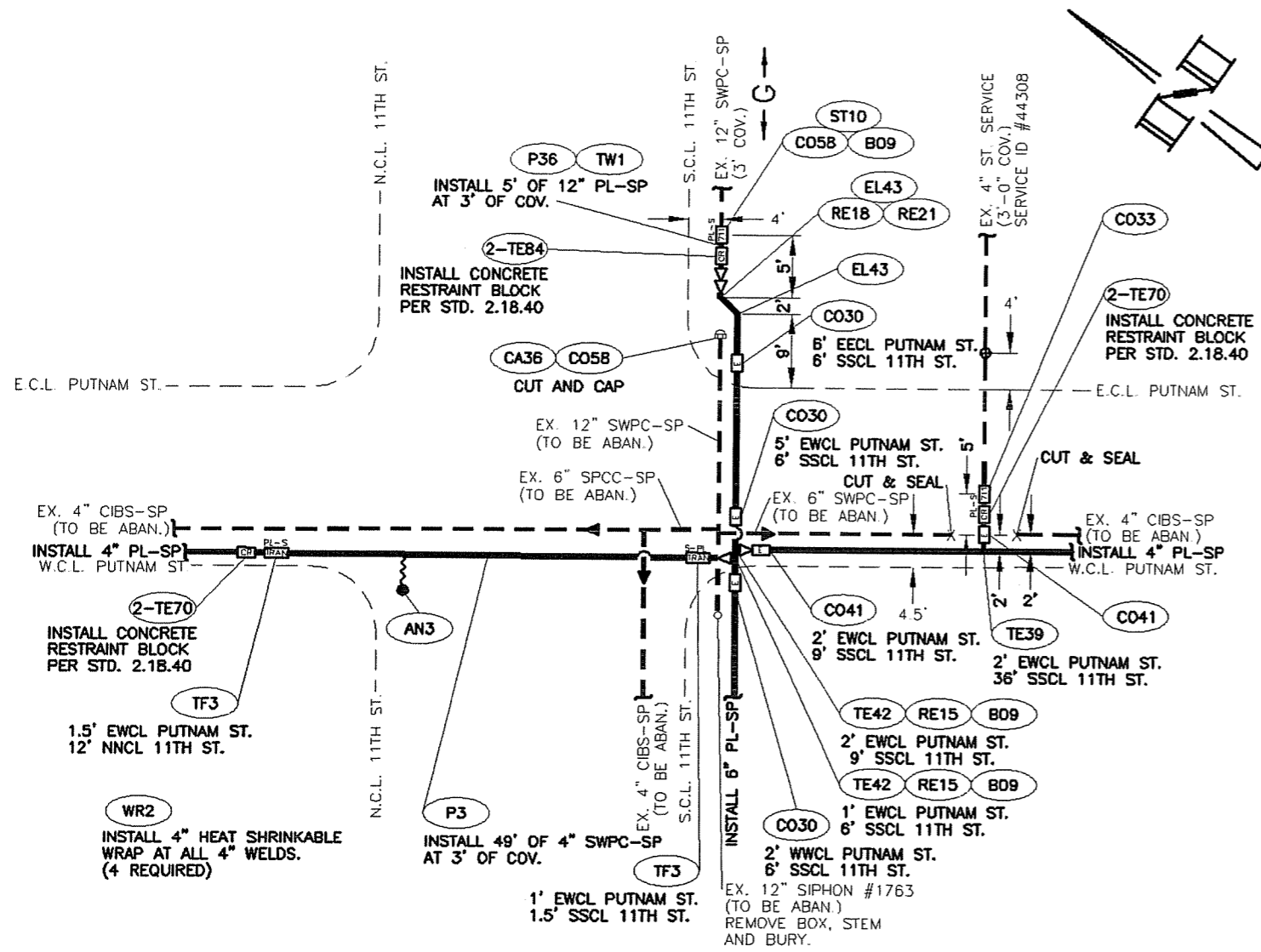


DETAIL "J"
(FROM SHEET 16)
N.T.S.



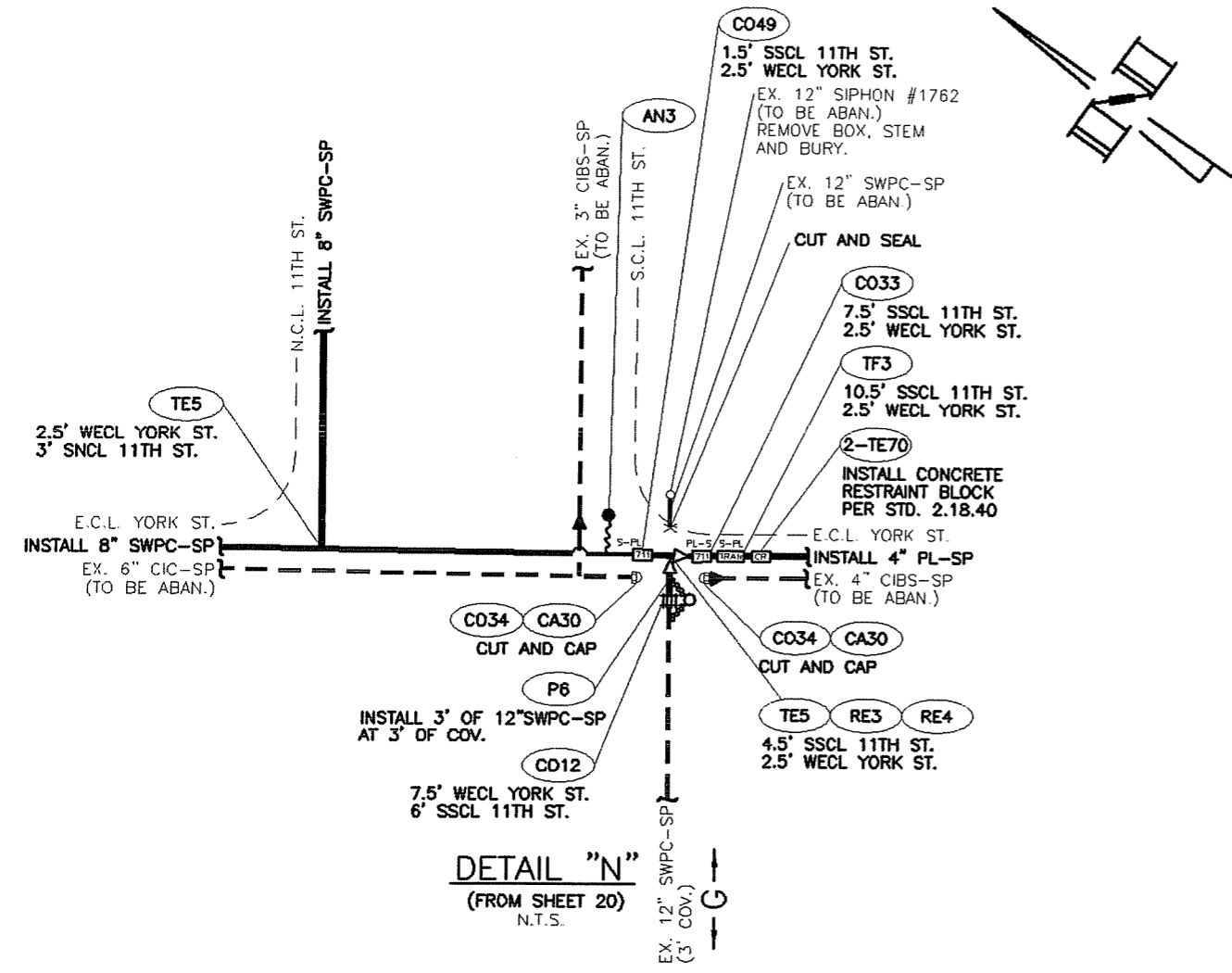
DETAIL "K"
(FROM SHEET 17)
N.T.S.



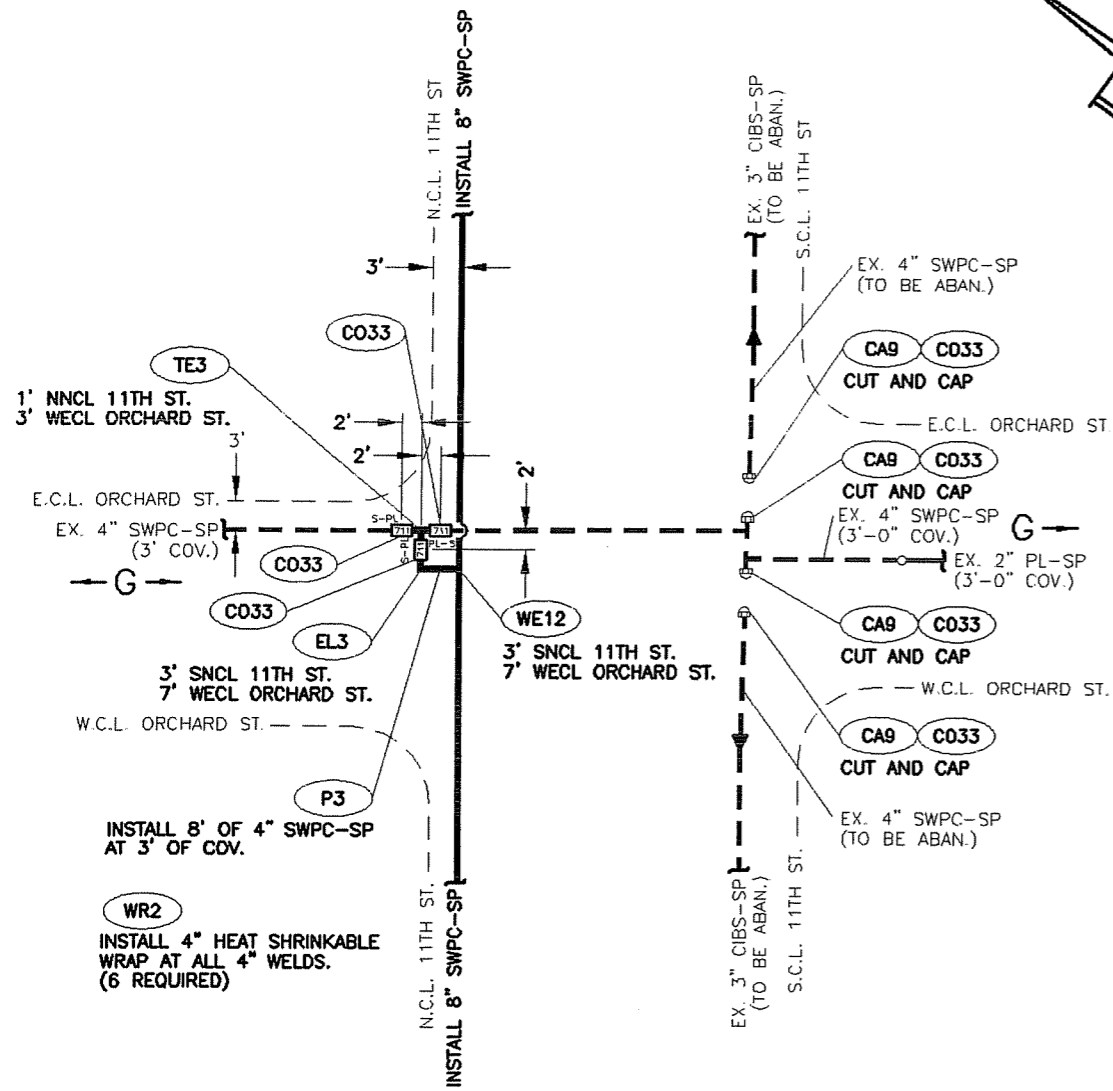
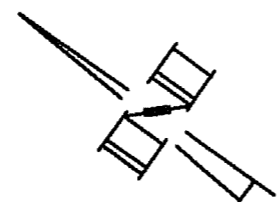


DETAIL "M"
(FROM SHEET 19)
N.T.S.

REVISIONS

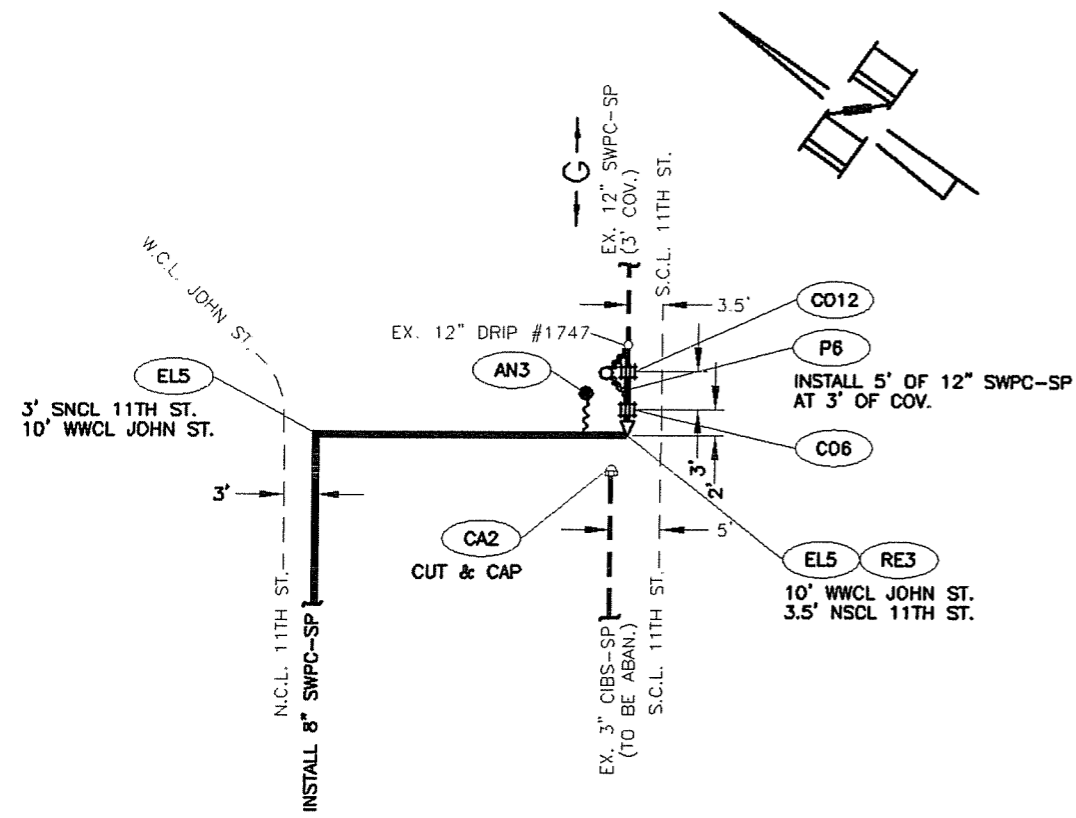


REVISIONS



DETAIL "O"
(FROM SHEET 2D)
N.T.S.

REVISIONS



DETAIL "P"
(FROM SHEET 21)
N.T.S.

REVISIONS