

RECEIVED

AUG 24 2007

PUBLIC SERVICE
COMMISSION

August 24, 2007

HAND DELIVERED

Ms. Elizabeth O'Donnell
Executive Director
Public Service Commission
211 Sower Boulevard
Frankfort, KY 40602

Re: PSC Case No. 2007-00277

Dear Ms. O'Donnell:

Please find enclosed for filing with the Commission in the above-referenced case an original and five copies of the responses of East Kentucky Power Cooperative, Inc., to the information requests contained in Appendix A to the Commission's order dated August 3, 2007, and an original and five copies of the affidavit of David G. Eames regarding notice of the hearing in this case.

Very truly yours,



Charles A. Lile
Senior Corporate Counsel

Enclosures

Cc: Parties of Record

COMMONWEALTH OF KENTUCKY

RECEIVED

BEFORE THE PUBLIC SERVICE COMMISSION

AUG 24 2007

PUBLIC SERVICE
COMMISSION

IN THE MATTER OF:

AN EXAMINATION OF THE APPLICATION OF THE)
FUEL ADJUSTMENT CLAUSE OF EAST KENTUCKY) CASE NO. 2007-00277
POWER COOPERATIVE, INC. FROM NOVEMBER 1,)
2006 TO APRIL 30, 2007)

CERTIFICATE

STATE OF KENTUCKY)
)
COUNTY OF CLARK)

Gerard B. Bordes, being duly sworn, states that he has supervised the preparation of the responses of East Kentucky Power Cooperative, Inc. to the Public Service Commission Staff Data Requests in the above-referenced case dated August 3, 2007, and that the matters and things set forth therein are true and accurate to the best of his knowledge, information and belief, formed after reasonable inquiry.

Gerard B. Bordes

Subscribed and sworn before me on this 23rd day of August, 2007.

Peggy S. Duffin
Notary Public

My Commission expires:

December 8, 2009

RECEIVED

AUG 24 2007

PUBLIC SERVICE
COMMISSION

**COMMONWEALTH OF KENTUCKY
BEFORE THE PUBLIC SERVICE COMMISSION**

In the Matter of:

**AN EXAMINATION OF THE)
APPLICATION OF THE FUEL)
ADJUSTMENT CLAUSE OF EAST)
KENTUCKY POWER COOPERATIVE,) CASE NO. 2007-00277
INC. FROM NOVEMBER 1, 2006)
THROUGH APRIL 30, 2007)**

**RESPONSES TO COMMISSION STAFF'S INFORMATION REQUEST
TO EAST KENTUCKY POWER COOPERATIVE, INC.
DATED AUGUST 3, 2007**

EAST KENTUCKY POWER COOPERATIVE, INC.

PSC CASE NO. 2007-00277

PUBLIC SERVICE COMMISSION REQUEST DATED 08/03/07

East Kentucky Power Cooperative, Inc. (EKPC) hereby submits responses to the information requests contained in Appendix A to the Order of the Public Service Commission ("PSC") in this case dated August 3, 2007. Each response with its associated supportive reference materials is individually tabbed.

EAST KENTUCKY POWER COOPERATIVE, INC

PSC CASE NO. 2007-00277
FUEL ADJUSTMENT CLAUSE
INFORMATION REQUEST RESPONSE

COMMISSION STAFF'S INFORMATION REQUEST DATED 08/03/07
REQUEST 1

RESPONSIBLE PARTY: Gerard B. Bordes

Request 1. For the period from November 1, 2006 through April 30, 2007, list each vendor from whom coal was purchased and the quantities and the nature of each purchase (e.g., spot or contract).

Response 1. See attached pages 2 through 6.

EAST KENTUCKY POWER COOPERATIVE
 November 1, 2006 through April 30, 2007
 PSC CASE NO. 2007-00277
RESPONSE TO PSC ORDER DATED AUGUST 3, 2007
DALE POWER STATION

Spot	Contract	Vendor	November 2006	December 2006	January 2007	February 2007	March 2007	April 2007	Total
	C	GATLIFF COAL COMPANY	15,417.00	14,606.00	17,436.00	18,502.00	23,638.00	23,378.00	112,977.00
	C	TRINITY COAL MARKETING LLC	10,037.00	11,086.00	10,632.00	10,049.00	10,747.00	9,573.00	62,124.00
	C Total		25,454.00	25,692.00	28,068.00	28,551.00	34,385.00	32,951.00	175,101.00
	S	B&W RESOURCES, INC	5,521.00	7,651.00	9,678.00	9,627.00	5,856.00	5,177.00	43,510.00
	S	DALE ROM BLEND	2,740.00	9,097.00	1,342.00	-	-	-	13,179.00
	S	TRINITY COAL MARKETING LLC		10,852.00	13,294.00	9,370.00			33,516.00
	S Total		8,261.00	27,600.00	24,314.00	18,997.00	5,856.00	5,177.00	90,205.00
	Grand Total		33,715.00	53,292.00	52,382.00	47,548.00	40,241.00	38,128.00	265,306.00

EAST KENTUCKY POWER COOPERATIVE
November 1, 2006 through April 30, 2007
PSC CASE NO. 2007-00277
RESPONSE TO PSC ORDER DATED AUGUST 3, 2007
COOPER POWER STATION

Vendor	Spot Contract	November 2006	December 2006	January 2007	February 2007	March 2007	April 2007	Total
GATLIFF COAL COMPANY	C	26,304.00	18,107.00	27,108.00	28,172.00	20,213.00	20,428.00	140,332.00
INTERNATIONAL COAL GROUP LLC	C	10,068.00	10,128.00	10,013.00	10,027.00	10,006.00	10,039.00	60,281.00
NATIONAL COAL CORP	C	11,133.00	15,968.00	16,052.00	15,796.00	9,983.00	15,456.00	84,388.00
TRINITY COAL MARKETING LLC	C	7,279.00	10,750.00	11,836.00	12,899.00	10,348.00	11,607.00	64,719.00
	C Total	54,784.00	54,953.00	65,009.00	66,894.00	50,550.00	57,530.00	349,720.00
IKERD TERMINAL CO LLC	S		1,093.00	275.00	1,564.00	248.00	1,174.00	4,354.00
INTERNATIONAL COAL GROUP LLC	S	5,066.00	5,046.00					10,112.00
ROM BLEND	S	20,141.00	19,139.00	6,742.00	10,684.00	23,687.00	15,458.00	95,851.00
	S Total	25,207.00	25,278.00	7,017.00	12,248.00	23,935.00	16,632.00	110,317.00
	Grand Total	79,991.00	80,231.00	72,026.00	79,142.00	74,485.00	74,162.00	460,037.00

EAST KENTUCKY POWER COOPERATIVE
November 1, 2006 through April 30, 2007
PSC CASE NO. 2007-00277
RESPONSE TO PSC ORDER DATED AUGUST 3, 2007
SPURLOCK POWER STATION UNIT NO. 1

Vendor	Spot Contract	November 2006	December 2006	January 2007	February 2007	March 2007	April 2007	Total
APPALACHIAN FUELS LLC	C	3,105.00	6,304.00					9,409.00
APPALACHIAN FUELS LLC	C	11,145.00						11,145.00
ARGUS ENERGY. LLC	C	31,936.00	31,961.00	20,409.00	15,630.00	17,702.00	6,250.00	123,888.00
INFINITY COAL SALES LLC	C	6,512.00	6,512.00					6,512.00
C Total		46,186.00	44,777.00	20,409.00	15,630.00	17,702.00	6,250.00	150,954.00
APPALACHIAN FUELS LLC	S		9,670.00					9,670.00
COALTRADE LLC	S	1,516.00						1,516.00
INFINITY COAL SALES LLC	S			1,709.00				1,709.00
KOCH CARBON LLC	S	10,004.00	22,887.00	15,302.00	24,788.00	25,457.00	1,674.00	100,112.00
KOCH CARBON LLC	S						3,222.00	3,222.00
SOLID ENERGY LLC	S			42,789.00	55,254.00	22,325.00		120,368.00
SOLID ENERGY LLC	S					1,620.00	17,628.00	19,248.00
S Total		11,520.00	32,557.00	59,800.00	80,042.00	49,402.00	22,524.00	255,845.00
Grand Total		57,706.00	77,334.00	80,209.00	95,672.00	67,104.00	28,774.00	406,799.00

EAST KENTUCKY POWER COOPERATIVE
November 1, 2006 through April 30, 2007
PSC CASE NO. 2007-00277
RESPONSE TO PSC ORDER DATED AUGUST 3, 2007
SPURLOCK POWER STATION UNIT NO. 2

Vendor	Spot Contract	November 2006	December 2006	January 2007	February 2007	March 2007	April 2007	Total
APPALACHIAN FUELS LLC	C	7,848.00	1,598.00				-	9,446.00
APPALACHIAN FUELS LLC	C			3,107.00				3,107.00
ARGUS ENERGY, LLC	C	42,536.00	41,367.00	39,133.00	36,228.00	21,955.00	25,069.00	206,288.00
INFINITY COAL SALES LLC	C	41,749.00	4,917.00	16,128.00	8,226.00	17,780.00	6,541.00	95,341.00
INFINITY COAL SALES LLC	C				13,179.00			13,179.00
KEYSTONE INDUSTRIES LLC	C	1,599.00		6,584.00	9,688.00	31,031.00	1,686.00	50,588.00
KEYSTONE INDUSTRIES LLC	C				6,327.00	9,821.00		16,148.00
MC MINING LLC	C	10,167.00	29,713.00	31,707.00	19,465.00	30,006.00	39,451.00	160,509.00
C Total		103,899.00	77,595.00	96,659.00	93,113.00	110,593.00	72,747.00	554,606.00
APPALACHIAN FUELS LLC	S					10,294.00		10,294.00
CALLA SYNFUEL LLC	S	12,969.00	22,829.00	1,631.00				37,429.00
CEREDO SYNFUEL LLC	S	9,244.00						9,244.00
CEREDO SYNFUEL LLC	S	8,029.00	1,788.00					9,817.00
COALSALES LLC	S				13,075.00	32,104.00	4,868.00	50,047.00
COALTRADE LLC	S	6,149.00	9,389.00	3,086.00				18,624.00
COALTRADE LLC	S	10,580.00	10,800.00	20,727.00	10,660.00	21,725.00	31,105.00	105,597.00
MARMET SYNFUEL LLC	S		9,851.00					9,851.00
MARMET SYNFUEL LLC	S				13,000.00	6,407.00		19,407.00
MARMET SYNFUEL LLC	S					8,076.00	9,809.00	17,885.00
PROGRESS FUELS CORP	S	11,226.00						11,226.00
SSM COAL AMERICAS LLC	S	10,329.00	32,341.00					42,670.00
SSM COAL AMERICAS LLC	S	4,697.00	4,716.00					9,413.00
SSM COAL AMERICAS LLC	S		24,637.00					24,637.00
S Total		73,223.00	116,351.00	25,444.00	36,735.00	78,606.00	45,782.00	376,141.00
Grand Total		177,122.00	193,946.00	122,103.00	129,848.00	189,199.00	118,529.00	930,747.00

EAST KENTUCKY POWER COOPERATIVE
 November 1, 2006 through April 30, 2007
 PSC CASE NO. 2007-00277
RESPONSE TO PSC ORDER DATED AUGUST 3, 2007
GILBERT

Spot Contract	Vendor	November 2006	December 2006	January 2007	February 2007	March 2007	April 2007	Total
C	B&N COAL INC	9,842.00	10,020.00	10,043.00	9,882.00	9,966.00	8,201.00	57,954.00
C	B&N COAL INC	6,570.00	15,163.00	9,816.00	4,767.00	18,022.00		54,338.00
C	MASSEY UTILITY	9,285.00	12,724.00	14,404.00	22,460.00	20,490.00	9,432.00	88,795.00
C	OXFORD MINING CO	11,694.00	22,914.00	24,206.00	22,528.00	22,627.00	13,115.00	117,084.00
C Total		37,391.00	60,821.00	58,469.00	59,637.00	71,105.00	30,748.00	318,171.00
Grand Total		37,391.00	60,821.00	58,469.00	59,637.00	71,105.00	30,748.00	318,171.00

EAST KENTUCKY POWER COOPERATIVE, INC

PSC CASE NO. 2007-00277
FUEL ADJUSTMENT CLAUSE
INFORMATION REQUEST RESPONSE

COMMISSION STAFF'S INFORMATION REQUEST DATED 08/03/07
REQUEST 2

RESPONSIBLE PARTY: Gerard B. Bordes

Request 2. For each generating station or unit for which a separate coal pile is maintained, state for the period from November 1, 2006 through April 30, 2007 the actual amount of coal burned in tons, the actual amount of coal deliveries in tons, the total kWh generated, and the actual capacity factor at which the plant operated.

Response 2. See attached pages 2 and 3.

EAST KENTUCKY POWER COOPERATIVE, INC.

PSC FUEL ADJUSTMENT CLAUSE CASE NO. 2007-00277

RESPONSE TO PSC ORDER DATED AUGUST 3, 2007

Station	November	December	January	February	March	April
<u>Dale</u>						
Tons Burned	41,035.20	40,179.80	47,672.30	47,122.80	37,087.70	50,959.60
Tons Delivered	33,713.90	53,292.40	52,383.05	47,547.38	40,240.86	38,127.04
Generation—Net kWh	86,421,000.00	82,963,000.00	99,979,000.00	99,530,000.00	76,941,000.00	107,991,000.00
Actual Capacity Factor (net)	61.24	56.89	68.56	75.57	52.76	76.52
<u>Cooper</u>						
Tons Burned	42,158.30	78,123.00	84,548.50	78,417.30	75,383.00	79,185.10
Tons Delivered	79,990.64	80,230.94	72,026.31	79,142.18	74,484.27	74,161.76
Generation—Net kWh	98,089,000.00	188,110,000.00	201,104,000.00	186,909,000.00	180,824,000.00	189,984,000.00
Actual Capacity Factor (net)	39.95	74.55	79.27	81.57	71.27	77.38
<u>Spurlock 1</u>						
Tons Burned (Inventory 1)	82,636.00	84,901.00	90,416.00	71,917.00	86,689.00	27,579.00
Tons Burned (Inventory 2)	0.00	0.00	0.00	0.00	0.00	0.00
Total Tons Burned	82,636.00	84,901.00	90,416.00	71,917.00	86,689.00	27,579.00
Tons Delivered	57,706.00	77,334.30	80,209.00	95,672.00	67,104.00	28,774.00
Generation—Net kWh	189,083,992.00	194,765,444.00	205,295,000.00	183,167,244.00	194,530,407.00	60,986,314.00
Actual Capacity Factor (net)	80.81	80.55	84.90	83.87	80.45	26.06
<u>Spurlock 2</u>						
Tons Burned (Inventory 1)	0.00	0.00	0.00	9,500.00	0.00	0.00
Tons Burned (Inventory 2)	146,610.00	144,907.00	154,389.00	145,041.00	151,856.00	113,217.00
Total Tons Burned	146,610.00	144,907.00	154,389.00	154,541.00	151,856.00	113,217.00
Tons Delivered	177,121.88	193,945.82	122,103.25	129,848.01	189,198.90	118,529.44
Generation—Net kWh	346,495,596.00	348,863,170.00	361,421,239.00	339,560,898.00	361,465,079.00	268,669,072.00
Actual Capacity Factor (net)	91.67	89.31	92.53	96.25	92.54	71.08

EAST KENTUCKY POWER COOPERATIVE, INC.
PSC FUEL ADJUSTMENT CLAUSE CASE NO. 2007-00277
RESPONSE TO PSC ORDER DATED AUGUST 3, 2007

Station	November	December	January	February	March	April
<u>Gilbert</u>						
Tons Burned	82,151.00	84,310.00	83,289.00	76,066.00	79,659.00	---
Tons Delivered	37,391.00	60,821.00	58,469.00	59,637.00	71,105.00	30,748.00
Generation—Net kWh	183,769,000.00	190,756,000.00	182,294,000.00	170,032,000.00	178,809,000.00	-2,086,000.00
Actual Capacity Factor (net)	95.24	95.67	91.42	94.41	89.68	-1.08

EAST KENTUCKY POWER COOPERATIVE, INC

PSC CASE NO. 2007-00277
FUEL ADJUSTMENT CLAUSE
INFORMATION REQUEST RESPONSE

COMMISSION STAFF'S INFORMATION REQUEST DATED 08/03/07
REQUEST 3

RESPONSIBLE PARTY: **Ann F. Wood**

Request 3. List all firm power commitments for East Kentucky from November 1, 2006 through April 30, 2007 for (a) purchases and (b) sales. This list shall identify the electric utility, the amount of commitment in MW, and the purpose of the commitment (e.g., peaking, emergency).

Response 3.

a. Purchases

Duke Energy Ohio	65MW	Jan 2007-Dec 2010	Energy
SEPA *	170MW	Through June 2017	Peaking
Cargill	50MW	November 2006	Energy
Cargill	50MW	December 2006	Energy
Cobb Electric Mem.Corp	50MW	December 2006	Energy
Southern Company	50MW	December 2006	Energy
Southern Company	100MW	Jan 2007-Feb 2007	Energy
Cobb Electric Mem.Corp	50MW	Jan 2007-Feb 2007	Energy
Cobb Electric Mem.Corp	50MW	April 2007	Energy

*Southeastern Power Administration

b. Sales

None.

EAST KENTUCKY POWER COOPERATIVE, INC

**PSC CASE NO. 2007-00277
FUEL ADJUSTMENT CLAUSE
INFORMATION REQUEST RESPONSE**

**COMMISSION STAFF'S INFORMATION REQUEST DATED 08/03/07
REQUEST 4**

RESPONSIBLE PARTY: Ann F. Wood

Request 4. Provide a monthly billing summary for sales to all electric utilities for the period November 1, 2006 through April 30, 2007.

Response 4. Member Cooperative Sales – pages 2 through 21.
Other Sales – pages 22 through 27.

EAST KENTUCKY POWER COOPERATIVE INC.
Wholesale Power Accounting
CO-OP Totals Billing Summary - CP Tariff

2006

November

CO-OP Name/EKPC	Month	KW	KWH	Base Mills/KWH	Fuel Charge	Fuel Mills/KWH	Surcharge	Surcharge Mills/KWH	Revenue
BIG SANDY RECC	Month	50,244	23,285,753	42.81	59,611	45.37	104,897	49.87	1,161,271
	YTD	534,986	236,605,212	43.87	1,649,938	50.85	1,147,146	55.70	13,177,908
BLUE GRASS ENERGY	Month	229,055	98,722,910	43.25	252,733	45.81	449,095	50.36	4,971,706
	YTD	2,418,240	1,101,447,423	42.82	7,625,225	49.74	5,264,529	54.52	60,049,466
CLARK ENERGY COOP	Month	86,959	36,232,503	44.58	92,758	47.14	169,606	51.82	1,877,634
	YTD	902,957	394,494,472	44.47	2,737,673	51.41	1,945,859	56.34	22,225,163
CUMBERLAND VALLEY ELECTRIC	Month	100,267	44,882,279	43.20	114,900	45.76	203,947	50.30	2,257,782
	YTD	1,032,233	467,295,299	43.58	3,251,707	50.54	2,261,004	55.38	25,876,634
FARMERS RECC	Month	86,335	42,995,727	41.55	110,070	44.11	188,330	48.49	2,084,917
	YTD	960,350	469,115,970	42.13	3,243,374	49.05	2,220,962	53.78	25,229,013
FLEMING MASON RECC	Month	163,867	74,242,229	41.53	175,412	43.89	310,901	48.08	3,569,376
	YTD	1,736,050	836,358,806	41.48	5,267,679	47.78	3,655,737	52.15	43,614,119
GRAYSON RECC	Month	50,585	22,983,290	43.43	58,838	45.99	104,954	50.55	1,161,885
	YTD	535,401	238,613,657	44.18	1,656,799	51.12	1,167,343	56.01	13,365,333
INTER-COUNTY ECC	Month	96,060	38,326,853	44.38	97,876	46.93	178,607	51.59	1,977,266
	YTD	967,612	409,331,240	44.03	2,846,404	50.99	1,991,843	55.85	22,862,219
JACKSON ENERGY COOP	Month	199,272	81,618,556	44.18	208,823	46.74	378,814	51.38	4,193,644
	YTD	1,978,861	856,927,056	43.89	5,974,766	50.86	4,152,296	55.71	47,735,469
LICKING VALLEY RECC	Month	53,571	23,578,598	43.63	60,360	46.19	108,148	50.78	1,197,255
	YTD	547,631	243,115,356	44.04	1,692,801	51.01	1,184,746	55.88	13,585,459
NOLIN RECC	Month	136,869	64,045,559	41.49	163,956	44.05	280,134	48.42	3,101,240
	YTD	1,425,714	701,078,101	41.36	4,837,837	48.27	3,263,963	52.92	37,101,831
OWEN EC	Month	344,603	157,790,012	37.14	403,607	39.70	622,058	43.64	6,886,480
	YTD	4,149,132	2,072,471,414	34.95	13,548,914	41.49	8,220,505	45.46	94,210,028
SALT RIVER RECC	Month	177,745	84,362,005	40.42	204,662	42.85	357,052	47.08	3,971,849
	YTD	1,955,751	927,008,535	41.71	6,187,135	48.39	4,337,113	53.07	49,192,487
SHELBY ENERGY COOP	Month	74,918	36,597,716	41.32	93,624	43.88	159,426	48.23	1,765,232
	YTD	825,105	413,104,182	41.23	2,855,665	48.14	1,917,955	52.78	21,805,614
SOUTH KENTUCKY RECC	Month	249,089	97,999,539	44.57	250,880	47.13	458,683	51.81	5,077,843
	YTD	2,456,655	1,054,894,164	43.87	7,343,548	50.83	5,124,567	55.69	58,748,564
TAYLOR COUNTY RECC	Month	104,160	42,184,739	45.74	95,590	48.01	189,947	52.51	2,215,117
	YTD	1,089,650	471,536,218	45.71	2,837,615	51.73	2,200,471	56.40	26,593,003
CO-OP Subtotals									
Inland Steam	Month	2,203,599	969,848,268	42.03	2,443,700	44.55	4,264,599	48.95	47,470,497
	YTD	23,516,328	10,893,397,105	41.47	73,557,080	48.22	50,056,039	52.82	575,372,310
Totals	Month	44,622	21,926,590	32.34	54,392	34.82	75,815	38.28	839,307
	YTD	469,410	242,253,119	31.41	1,632,801	38.15	882,352	41.79	10,123,918
Totals	Month	2,248,221	991,774,858	41.82	2,498,092	44.33	4,340,414	48.71	48,309,804
	YTD	23,985,738	11,135,650,224	41.25	75,189,881	48.00	50,938,391	52.58	585,496,228

EAST KENTUCKY POWER COOPERATIVE INC.
Wholesale Power Accounting
CO-OP Totals Billing Summary - CP Tariff

2006

November

CO-OP Name/EKPC	Month	YTD	KW	KWH	Base Mills/KWH	Fuel Charge	Fuel Mills/KWH	Surchage	Surchage Mills/KWH	Revenue
Burnside	Month		104	37,202	46.69	95	49.24	182	54.14	2,014
	YTD		710	274,143	45.26	2,003	52.57	1,285	57.26	15,697
East Ky Office	Month		1,047	556,881	40.35	1,425	42.91	2,372	47.17	26,267
	YTD		10,686	6,281,365	39.13	44,066	46.14	27,610	50.54	317,463
Smith Construction	Month		20	14,255	37.04	36	39.57	56	43.49	620
	YTD		531	326,151	38.60	2,413	46.00	1,360	50.17	16,364
EKPC Subtotals	Month		1,171	608,338	40.66	1,556	43.22	2,610	47.51	28,901
	YTD		11,927	6,881,659	39.35	48,482	46.39	30,255	50.79	349,524
Totals	Month		2,249,392	992,383,196	41.81	2,499,648	44.33	4,343,024	48.71	48,338,705
	YTD		23,997,665	11,142,531,883	41.25	75,238,363	48.00	50,968,646	52.58	585,845,752

EAST KENTUCKY POWER COOPERATIVE INC.
Wholesale Power Accounting
CO-OP Totals Billing Summary - CP Tariff

CPRN330

2006

December

CO-OP Name/EKPC	KW	KWH	Base Mills/KWH	Fuel Charge	Fuel Mills/KWH	Surcharge	Surcharge Mills/KWH	Revenue
BIG SANDY RECC	67,231	28,282,441	43.76	145,655	48.91	131,561	53.57	1,514,957
	Month							
	YTD	264,887,653	43.86	1,795,593	50.64	1,278,707	55.47	14,692,865
BLUE GRASS ENERGY	292,632	116,695,383	44.16	600,981	49.31	547,179	53.99	6,300,907
	Month							
	YTD	2,706,915	43.03	8,226,206	49.80	5,811,708	54.58	66,350,373
CLARK ENERGY COOP	108,434	43,866,563	44.67	225,912	49.82	207,827	54.56	2,393,176
	Month							
	YTD	1,011,391	44.49	2,963,585	51.25	2,153,686	56.16	24,618,339
CUMBERLAND VALLEY ELECTRIC	126,151	51,714,253	44.12	266,328	49.27	242,335	53.96	2,790,548
	Month							
	YTD	1,159,384	43.63	3,518,035	50.41	2,503,339	55.23	28,667,182
FARMERS RECC	111,691	47,149,069	43.44	242,818	48.59	217,874	53.21	2,508,875
	Month							
	YTD	1,072,041	42.25	3,486,192	49.00	2,438,836	53.73	27,737,888
FLEMING MASON RECC	185,093	81,289,077	41.20	397,446	46.09	350,832	50.41	4,097,738
	Month							
	YTD	1,921,143	41.45	5,665,125	47.63	4,006,569	51.99	47,711,857
GRAYSON RECC	64,915	27,117,928	44.23	139,656	49.38	127,344	54.07	1,466,391
	Month							
	YTD	600,316	44.18	1,796,455	50.94	1,294,687	55.81	14,831,724
INTER-COUNTY ECC	127,045	46,538,060	45.43	239,233	50.57	223,796	55.38	2,577,061
	Month							
	YTD	1,094,657	44.17	3,085,637	50.94	2,215,639	55.80	25,439,280
JACKSON ENERGY COOP	258,110	97,675,036	45.05	502,245	50.19	466,222	54.96	5,368,687
	Month							
	YTD	2,236,971	44.01	6,477,011	50.79	4,618,518	55.63	53,104,156
LICKING VALLEY RECC	66,881	28,346,694	43.87	145,986	49.02	132,147	53.68	1,521,718
	Month							
	YTD	614,512	44.03	1,838,787	50.80	1,316,893	55.65	15,107,177
NOLIN RECC	177,746	74,423,297	42.85	383,279	48.00	339,692	52.56	3,911,654
	Month							
	YTD	1,603,460	41.51	5,221,116	48.24	3,603,655	52.89	41,013,485
OWEN EC	386,008	182,111,947	38.74	937,296	43.88	737,141	47.93	8,729,064
	Month							
	YTD	4,345,460	37.20	14,486,210	43.98	8,957,646	48.17	102,939,092
SALT RIVER RECC	219,181	94,374,845	41.57	486,055	46.49	435,010	50.90	5,028,128
	Month							
	YTD	2,141,304	42.85	6,671,903	49.53	4,771,719	54.31	54,214,243
SHELBY ENERGY COOP	90,028	41,240,549	42.03	212,233	47.18	184,976	51.66	2,130,650
	Month							
	YTD	915,133	41.30	3,067,898	48.05	2,102,931	52.68	23,936,264
SOUTH KENTUCKY RECC	318,469	114,937,164	45.68	591,927	50.83	555,586	55.66	6,397,696
	Month							
	YTD	2,775,124	44.05	7,935,475	50.83	5,680,153	55.69	65,146,260
TAYLOR COUNTY RECC	130,823	51,752,242	46.33	229,897	50.77	238,284	55.37	2,865,720
	Month							
	YTD	1,220,473	45.77	3,067,512	51.63	2,438,755	56.30	29,458,723
CO-OP Subtotals								
	Month	2,730,438	43.21	5,746,947	48.31	5,137,806	52.86	59,602,970
	YTD	26,019,501	42.14	79,302,740	48.81	55,193,441	53.46	634,968,908
Inland Steam	44,546	24,215,622	31.76	121,094	36.77	84,667	40.26	974,958
	Month							
	YTD	513,956	31.44	1,753,895	38.02	967,019	41.65	11,098,876
Totals								
	Month	2,774,984	42.97	5,868,041	48.06	5,222,473	52.60	60,577,928
	YTD	26,533,457	41.90	81,056,635	48.58	56,160,460	53.20	646,067,784

EAST KENTUCKY POWER COOPERATIVE INC.
Wholesale Power Accounting
CO-OP Totals Billing Summary - CP Tariff

2006

December

CO-OP Name/EKPC		KW	KWH	Base Mills/KWH	Fuel Charge	Fuel Mills/KWH	Surcharge	Surcharge Mills/KWH	Revenue
Burnside	Month	121	50,297	43.98	259	49.13	235	53.80	2,706
	YTD	831	324,440	45.07	2,262	52.04	1,520	56.72	18,403
East Ky Office	Month	1,231	619,678	41.08	3,192	46.23	2,725	50.63	31,374
	YTD	11,917	6,901,043	39.30	47,258	46.15	30,335	50.55	348,837
Smith Construction	Month	20	16,102	35.90	83	41.05	63	44.96	724
	YTD	551	342,253	38.48	2,496	45.77	1,423	49.93	17,088
EKPC Subtotals	Month	1,372	686,077	41.17	3,534	46.32	3,023	50.73	34,804
	YTD	13,299	7,567,736	39.51	52,016	46.39	33,278	50.79	384,328
Totals	Month	2,782,778	1,152,415,947	42.80	5,871,575	47.88	5,225,496	52.40	60,612,732
	YTD	26,546,756	12,151,669,924	41.90	81,108,651	48.57	56,193,738	53.20	646,452,112

EAST KENTUCKY POWER COOPERATIVE INC.
Wholesale Power Accounting
CO-OP Totals Billing Summary - CP Tariff

2007

January

CO-OP Name/EKPC	Month	KW	KWH	Base Mills/KWH	Fuel Charge	Fuel Mills/KWH	Surcharge	Surcharge Mills/KWH	Revenue
BIG SANDY RECC	Month	66,198	29,550,719	43.35	203,603	50.24	123,816	54.43	1,608,430
	YTD	66,198	29,550,719	43.35	203,603	50.24	123,816	54.43	1,608,430
BLUE GRASS ENERGY	Month	302,371	127,716,559	43.31	879,966	50.20	534,757	54.39	6,946,712
	YTD	302,371	127,716,559	43.31	879,966	50.20	534,757	54.39	6,946,712
CLARK ENERGY COOP	Month	116,840	47,319,886	44.54	326,032	51.43	202,954	55.72	2,636,463
	YTD	116,840	47,319,886	44.54	326,032	51.43	202,954	55.72	2,636,463
CUMBERLAND VALLEY ELECTRIC	Month	131,595	55,417,212	43.73	381,825	50.62	233,963	54.84	3,039,307
	YTD	131,595	55,417,212	43.73	381,825	50.62	233,963	54.84	3,039,307
FARMERS RECC	Month	116,925	52,800,490	42.51	363,795	49.40	217,515	53.51	2,825,596
	YTD	116,925	52,800,490	42.51	363,795	49.40	217,515	53.51	2,825,596
FLEMING MASON RECC	Month	187,179	87,621,035	41.18	559,851	47.57	337,316	51.42	4,505,050
	YTD	187,179	87,621,035	41.18	559,851	47.57	337,316	51.42	4,505,050
GRAYSON RECC	Month	66,063	28,614,390	43.71	197,152	50.60	120,760	54.82	1,568,740
	YTD	66,063	28,614,390	43.71	197,152	50.60	120,760	54.82	1,568,740
INTER-COUNTY ECC	Month	132,881	51,499,127	44.52	354,379	51.40	220,780	55.69	2,868,009
	YTD	132,881	51,499,127	44.52	354,379	51.40	220,780	55.69	2,868,009
JACKSON ENERGY COOP	Month	266,430	105,769,727	44.32	728,117	51.20	451,675	55.47	5,867,426
	YTD	266,430	105,769,727	44.32	728,117	51.20	451,675	55.47	5,867,426
LICKING VALLEY RECC	Month	66,345	29,673,780	43.15	204,453	50.04	123,850	54.22	1,608,856
	YTD	66,345	29,673,780	43.15	204,453	50.04	123,850	54.22	1,608,856
NOLIN RECC	Month	183,667	79,492,469	42.46	547,703	49.35	327,148	53.46	4,249,780
	YTD	183,667	79,492,469	42.46	547,703	49.35	327,148	53.46	4,249,780
OWEN EC	Month	381,394	204,037,952	37.24	1,405,731	44.13	729,719	47.70	9,733,154
	YTD	381,394	204,037,952	37.24	1,405,731	44.13	729,719	47.70	9,733,154
SALT RIVER RECC	Month	221,210	100,797,013	42.59	694,491	49.48	415,949	53.61	5,403,337
	YTD	221,210	100,797,013	42.59	694,491	49.48	415,949	53.61	5,403,337
SHELBY ENERGY COOP	Month	90,354	44,666,897	41.13	307,754	48.02	178,792	52.02	2,323,490
	YTD	90,354	44,666,897	41.13	307,754	48.02	178,792	52.02	2,323,490
SOUTH KENTUCKY RECC	Month	334,578	127,883,611	44.76	881,116	51.65	550,835	55.95	7,155,545
	YTD	334,578	127,883,611	44.76	881,116	51.65	550,835	55.95	7,155,545
TAYLOR COUNTY RECC	Month	136,319	58,129,222	46.19	334,489	51.95	234,207	55.98	3,253,949
	YTD	136,319	58,129,222	46.19	334,489	51.95	234,207	55.98	3,253,949
CO-OP Subtotals	Month	2,802,349	1,230,990,089	42.42	8,370,457	49.22	5,004,036	53.29	65,593,844
	YTD	2,802,349	1,230,990,089	42.42	8,370,457	49.22	5,004,036	53.29	65,593,844
Inland Steam	Month	44,586	24,827,568	31.55	165,930	38.23	79,161	41.42	1,028,338
	YTD	44,586	24,827,568	31.55	165,930	38.23	79,161	41.42	1,028,338
Totals	Month	2,846,935	1,255,817,657	42.21	8,536,387	49.00	5,083,197	53.05	66,622,182
	YTD	2,846,935	1,255,817,657	42.21	8,536,387	49.00	5,083,197	53.05	66,622,182

EAST KENTUCKY POWER COOPERATIVE INC.
Wholesale Power Accounting
CO-OP Totals Billing Summary - CP Tariff

2007

January

CO-OP Name/EKPC	KW	KWH	Base Mills/KWH	Fuel Charge	Fuel Mills/KWH	Surcharge	Surcharge Mills/KWH	Revenue
Burnside	Month	92	39.26	368	46.15	205	49.99	2,669
	YTD	92	39.26	368	46.15	205	49.99	2,669
East Ky Office	Month	1,302	41.06	4,522	47.95	2,624	51.95	34,097
	YTD	1,302	41.06	4,522	47.95	2,624	51.95	34,097
Smith Construction	Month	20	35.98	110	42.84	57	46.40	744
	YTD	20	35.98	110	42.84	57	46.40	744
EKPC Subtotals	Month	1,414	40.82	5,000	47.71	2,886	51.68	37,510
	YTD	1,414	40.82	5,000	47.71	2,886	51.68	37,510
Totals	Month	2,848,349	42.20	8,541,387	49.00	5,086,083	53.05	66,659,692
	YTD	2,848,349	42.20	8,541,387	49.00	5,086,083	53.05	66,659,692

EAST KENTUCKY POWER COOPERATIVE INC.
Wholesale Power Accounting
CO-OP Totals Billing Summary - CP Tariff

2007

February

CO-OP Name/EKPC	Month	KW	KWH	Base Mills/KWH	Fuel Charge	Fuel Mills/KWH	Surchage	Surchage Mills/KWH	Revenue
BIG SANDY RECC	Month	68,720	31,698,189	42.48	253,269	50.47	149,911	55.20	1,749,829
	YTD	136,918	61,248,908	42.90	456,872	50.36	273,727	54.83	3,358,259
BLUE GRASS ENERGY	Month	311,903	138,432,122	42.65	1,106,073	50.54	656,909	55.39	7,667,662
	YTD	614,274	266,148,681	42.97	1,986,039	50.43	1,191,666	54.91	14,614,374
CLARK ENERGY COOP	Month	120,900	52,847,340	43.38	422,251	51.37	254,390	56.19	2,969,342
	YTD	237,740	100,167,226	43.93	748,283	51.40	457,344	55.96	5,605,805
CUMBERLAND VALLEY ELECTRIC	Month	121,853	56,765,166	42.47	453,554	50.46	268,372	55.18	3,132,528
	YTD	253,448	112,182,378	43.09	835,379	50.54	502,335	55.02	6,171,835
FARMERS RECC	Month	118,614	53,736,155	42.41	429,353	50.40	253,785	55.13	2,962,289
	YTD	235,539	106,536,645	42.46	793,148	49.90	471,300	54.33	5,787,885
FLEMING MASON RECC	Month	195,349	86,553,824	41.94	659,783	49.56	389,839	54.06	4,679,519
	YTD	382,528	174,174,859	41.55	1,219,634	48.56	727,155	52.73	9,184,569
GRAYSON RECC	Month	73,356	32,035,456	43.41	255,963	51.40	154,278	56.21	1,800,778
	YTD	139,419	60,649,846	43.55	453,115	51.02	275,038	55.56	3,369,518
INTER-COUNTY ECC	Month	140,907	55,573,408	44.20	443,178	52.18	271,696	57.07	3,171,315
	YTD	273,788	107,072,535	44.36	797,557	51.80	492,476	56.40	6,039,324
JACKSON ENERGY COOP	Month	254,746	110,962,673	43.09	886,562	51.08	531,087	55.87	6,199,064
	YTD	521,176	216,732,400	43.69	1,614,679	51.14	982,762	55.67	12,066,490
LICKING VALLEY RECC	Month	71,623	32,155,992	42.95	256,927	50.94	153,490	55.72	1,791,580
	YTD	137,968	61,829,772	43.05	461,380	50.51	277,340	55.00	3,400,436
NOLIN RECC	Month	191,650	83,126,628	42.38	664,180	50.37	392,312	55.09	4,579,196
	YTD	375,317	162,619,097	42.42	1,211,883	49.87	719,460	54.29	8,828,976
OWEN EC	Month	411,175	200,153,077	41.00	1,599,221	48.99	852,161	53.25	10,657,560
	YTD	792,569	404,191,029	39.10	3,004,952	46.53	1,581,880	50.45	20,390,714
SALT RIVER RECC	Month	238,441	106,457,855	42.74	850,598	50.73	506,075	55.49	5,907,068
	YTD	459,651	207,254,868	42.67	1,545,089	50.12	922,024	54.57	11,310,405
SHELBY ENERGY COOP	Month	100,336	47,298,682	41.66	377,853	49.65	219,964	54.30	2,568,450
	YTD	190,690	91,965,579	41.40	685,607	48.86	398,756	53.19	4,891,940
SOUTH KENTUCKY RECC	Month	327,877	134,232,671	43.74	1,071,528	51.73	650,579	56.57	7,593,797
	YTD	662,455	262,116,282	44.24	1,952,644	51.69	1,201,414	56.27	14,749,342
TAYLOR COUNTY RECC	Month	135,553	57,982,133	48.18	402,323	55.12	276,890	59.89	3,472,632
	YTD	271,872	116,111,355	47.18	736,812	53.53	511,097	57.93	6,726,581
CO-OP Subtotals	Month	2,883,003	1,280,011,371	42.80	10,132,616	50.72	5,981,738	55.39	70,902,609
	YTD	5,685,352	2,511,001,460	42.62	18,503,073	49.98	10,985,774	54.36	136,496,453
Inland Steam	Month	44,589	23,667,106	31.88	183,427	39.63	87,879	43.34	1,025,751
	YTD	89,175	48,484,674	31.71	349,357	38.91	167,040	42.36	2,054,089
Totals	Month	2,927,592	1,303,678,477	42.60	10,316,043	50.52	6,069,617	55.17	71,928,360
	YTD	5,774,527	2,559,496,134	42.41	18,862,430	49.77	11,152,814	54.13	138,550,542

EAST KENTUCKY POWER COOPERATIVE INC.
Wholesale Power Accounting
CO-OP Totals Billing Summary - CP Tariff

2007

February

CO-OP Name/EKPC		KW	KWH	Base Mills/KWH	Fuel Charge	Fuel Mills/KWH	Surchage	Surchage Mills/KWH	Revenue
Burnside	Month	111	59,070	40.34	472	48.33	268	52.87	3,123
	YTD	203	112,459	39.83	840	47.30	473	51.50	5,792
East Ky Office	Month	1,382	715,237	40.70	5,714	48.69	3,264	53.25	38,089
	YTD	2,684	1,371,568	40.87	10,236	48.34	5,888	52.63	72,186
Smith Construction	Month	20	14,704	36.72	117	44.68	62	48.90	719
	YTD	40	30,739	36.34	227	43.72	119	47.59	1,463
EKPC Subtotals		1,513	789,011	40.60	6,303	48.59	3,594	53.14	41,931
	YTD	2,927	1,514,766	40.70	11,303	48.17	6,480	52.44	79,441
Totals		2,929,105	1,304,467,488	42.60	10,322,346	50.52	6,073,211	55.17	71,970,291
	YTD	5,777,454	2,561,010,900	42.41	18,863,733	49.77	11,159,294	54.13	138,629,983

EAST KENTUCKY POWER COOPERATIVE INC.
Wholesale Power Accounting
CO-OP Totals Billing Summary - CP Tariff

CPRN330

2007

CO-OP Name/EKPC	KW	KWH	Base Mills/KWH	Fuel Charge	Fuel Mills/KWH	Surcharge	March	
							Surcharge Mills/KWH	Revenue
BIG SANDY RECC	53,815	22,207,626	44.19	331,782	59.13	118,699	64.47	1,431,738
	Month							
	YTD	83,456,534	43.24	788,654	52.69	392,426	57.40	4,789,997
BLUE GRASS ENERGY	234,189	101,257,573	43.12	1,512,788	58.06	531,433	63.31	6,410,148
	Month	367,406,254	43.01	3,498,827	52.53	1,723,099	57.22	21,024,522
	YTD	36,794,698	44.69	549,715	59.63	198,339	65.02	2,392,339
CLARK ENERGY COOP	89,707	136,961,924	44.13	1,297,998	53.61	655,683	58.40	7,998,144
	Month	42,500,529	44.70	634,957	59.64	229,149	65.03	2,763,977
	YTD	154,682,907	43.53	1,470,336	53.04	731,484	57.77	8,935,812
CUMBERLAND VALLEY ELECTRIC	360,412	40,328,818	42.65	602,511	57.59	209,949	62.79	2,532,404
	Month	146,865,463	42.51	1,395,659	52.01	681,249	56.65	8,320,289
	YTD	82,809,461	41.63	1,074,881	54.61	383,990	59.25	4,906,534
FARMERS RECC	165,021	256,984,320	41.58	2,294,515	50.51	1,111,145	54.83	14,091,103
	Month	22,873,406	43.66	341,728	58.60	121,164	63.90	1,461,499
	YTD	83,523,252	43.58	794,843	53.10	396,202	57.84	4,831,017
GRAYSON RECC	191,015	37,364,723	43.95	558,020	58.88	198,778	64.20	2,398,895
	Month	144,437,258	44.25	1,355,577	53.64	691,254	58.42	8,438,219
	YTD	78,651,815	44.93	1,174,443	59.86	426,794	65.29	5,135,106
INTER-COUNTY ECC	206,246	295,384,215	44.02	2,789,122	53.46	1,409,556	58.23	17,201,596
	Month	22,522,420	44.53	336,486	59.47	121,082	64.85	1,460,486
	YTD	84,352,192	43.44	797,866	52.90	398,422	57.63	4,860,922
LICKING VALLEY RECC	193,008	64,293,774	41.67	960,549	56.61	329,005	61.72	3,968,420
	Month	226,912,871	42.20	2,172,432	51.78	1,048,465	56.40	12,797,396
	YTD	183,989,475	35.53	2,748,643	50.47	841,199	55.04	10,126,489
NOLIN RECC	516,118	588,180,504	37.98	5,753,595	47.76	2,423,079	51.88	30,517,203
	Month	81,014,373	42.60	1,210,355	57.54	421,425	62.74	5,083,219
	YTD	288,269,241	42.65	2,755,444	52.21	1,343,449	56.87	16,393,624
OWEN EC	635,348	38,012,773	41.15	567,913	56.09	192,710	61.16	2,324,984
	Month	129,978,352	41.33	1,253,520	50.97	591,466	55.52	7,216,924
	YTD	93,959,244	45.39	1,403,752	60.33	512,454	65.79	6,181,223
SALT RIVER RECC	253,327	356,075,526	44.54	3,356,396	53.97	1,713,868	58.78	20,930,565
	Month	44,015,667	48.09	541,569	60.40	219,865	65.39	2,878,236
	YTD	160,127,022	47.43	1,278,381	55.42	730,962	59.98	9,604,817
SHELBY ENERGY COOP	78,050	992,596,375	42.16	14,550,092	56.82	5,056,035	61.91	61,455,697
	Month	3,503,597,835	42.49	33,053,165	51.92	16,041,809	56.50	197,952,150
	YTD	24,733,046	31.69	359,165	46.21	103,324	50.39	1,246,285
SOUTH KENTUCKY RECC	44,492	73,227,720	31.70	708,522	41.38	270,364	45.07	3,300,374
	Month	1,017,329,421	41.91	14,909,257	56.56	5,159,359	61.63	62,701,982
	YTD	3,576,825,555	42.27	33,761,687	51.71	16,312,173	56.27	201,252,524
TAYLOR COUNTY RECC	133,667							
	Month							
	YTD							
CO-OP Subtotals								
	Month							
	YTD							
Inland Steam								
	Month							
	YTD							
Totals								
	Month							
	YTD							

EAST KENTUCKY POWER COOPERATIVE INC.
Wholesale Power Accounting
CO-OP Totals Billing Summary - CP Tariff

2007

March

CO-OP Name/EKPC	KW	KWH	Base Mills/KWH	Fuel Charge	Fuel Mills/KWH	Surcharge	Surcharge Mills/KWH	Revenue
Burnside	Month	102	49.66	472	64.58	185	70.43	2,227
	YTD	305	144,077	1,312	51.09	658	55.66	8,019
East Ky Office	Month	1,175	40.17	9,461	55.11	3,156	60.10	38,055
	YTD	3,859	2,004,781	19,697	50.48	9,044	54.99	110,241
Smith Contruction	Month	20	35.87	240	50.79	74	55.39	891
	YTD	60	46,826	467	46.15	193	50.27	2,354
EKPC Subtotals								
	Month	1,297	680,918	10,173	55.45	3,415	60.47	41,173
	YTD	4,224	2,195,684	21,476	50.43	9,895	54.93	120,614
Totals								
	Month	2,293,092	1,018,010,339	14,919,430	56.56	5,162,774	61.63	62,743,155
	YTD	8,070,546	3,579,021,239	33,783,163	51.70	16,322,068	56.26	201,373,138

5/2/07 10:04

EAST KENTUCKY POWER COOPERATIVE INC.
Wholesale Power Accounting
CO-OP Totals Billing Summary - CP Tariff

2007

April

CO-OP Name/EKPC	Month	YTD	KW	KWH	Base Mills/KWH	Fuel Charge	Fuel Mills/KWH	Surchage	Surchage Mills/KWH	Revenue
BIG SANDY RECC	Month	49,172	19,857,716	46.23	168,394	54.71	101,261	59.81	1,187,738	
	YTD	239,905	103,314,250	43.82	957,048	53.08	493,687	57.86	5,977,735	
BLUE GRASS ENERGY	Month	217,121	93,295,578	44.83	791,144	53.31	463,512	58.28	5,436,829	
	YTD	1,065,584	460,701,832	43.38	4,289,971	52.69	2,186,611	57.44	26,461,351	
CLARK ENERGY COOP	Month	84,388	33,897,268	46.76	287,450	55.24	174,513	60.39	2,046,964	
	YTD	411,835	170,859,192	44.65	1,585,448	53.93	830,196	58.79	10,045,108	
CUMBERLAND VALLEY ELECTRIC	Month	91,590	39,583,213	45.36	335,664	53.84	198,609	58.85	2,329,609	
	YTD	452,002	194,266,120	43.91	1,806,000	53.20	930,093	57.99	11,265,421	
FARMERS RECC	Month	80,976	38,252,779	43.77	324,384	52.25	186,281	57.12	2,184,999	
	YTD	405,963	185,118,242	42.77	1,720,043	52.06	867,530	56.75	10,505,288	
FLEMING MASON RECC	Month	155,688	73,712,698	43.90	560,396	51.50	333,909	56.03	4,130,254	
	YTD	703,237	330,697,018	42.10	2,854,911	50.73	1,445,054	55.10	18,221,357	
GRAYSON RECC	Month	51,407	20,177,123	47.11	171,104	55.59	104,527	60.77	1,226,079	
	YTD	242,422	103,700,375	44.27	965,947	53.58	500,729	58.41	6,057,096	
INTER-COUNTY ECC	Month	97,236	34,508,521	47.67	292,413	56.15	180,576	61.38	2,118,078	
	YTD	461,787	178,945,779	44.91	1,647,990	54.12	871,830	58.99	10,556,297	
JACKSON ENERGY COOP	Month	192,944	73,189,064	46.88	620,259	55.35	377,553	60.51	4,428,564	
	YTD	920,366	368,573,279	44.59	3,409,381	53.84	1,787,109	58.69	21,630,160	
LICKING VALLEY RECC	Month	54,302	20,633,157	47.27	174,969	55.75	107,214	60.95	1,257,575	
	YTD	247,310	104,985,349	44.20	972,835	53.46	505,636	58.28	6,118,497	
NOLIN RECC	Month	133,662	60,316,588	43.35	511,485	51.83	291,343	56.66	3,417,332	
	YTD	649,780	287,229,459	42.44	2,683,917	51.79	1,339,808	56.45	16,214,728	
OWEN EC	Month	326,620	163,026,382	37.66	1,381,128	46.13	697,252	50.41	8,218,470	
	YTD	1,468,529	751,206,886	37.91	7,134,723	47.41	3,120,331	51.56	38,735,673	
SALT RIVER RECC	Month	164,787	75,163,652	44.46	637,389	52.94	370,851	57.87	4,349,930	
	YTD	800,135	363,432,893	43.02	3,392,833	52.36	1,714,300	57.08	20,743,554	
SHELBY ENERGY COOP	Month	72,811	35,798,459	42.50	303,569	50.98	170,052	55.73	1,995,127	
	YTD	341,551	165,776,811	41.58	1,557,089	50.98	761,518	55.57	9,212,051	
SOUTH KENTUCKY RECC	Month	229,776	89,532,229	46.34	759,233	54.82	457,478	59.93	5,366,050	
	YTD	1,145,558	445,607,755	44.90	4,115,629	54.14	2,171,346	59.01	26,296,615	
TAYLOR COUNTY RECC	Month	96,304	42,848,599	49.41	292,365	56.23	203,220	60.98	2,612,696	
	YTD	475,475	202,975,621	47.85	1,570,746	55.59	934,182	60.19	12,217,513	
CO-OP Subtotals	Month	2,098,784	913,793,026	44.08	7,611,346	52.41	4,418,151	57.24	52,306,294	
	YTD	10,031,439	4,417,390,861	42.82	40,664,511	52.02	20,459,960	56.65	250,258,444	
Inland Steam	Month	44,519	21,480,731	34.04	176,874	42.28	84,639	46.22	992,782	
	YTD	178,186	94,708,451	32.23	885,396	41.58	355,003	45.33	4,293,156	
Totals	Month	2,143,303	935,273,757	43.85	7,788,220	52.17	4,502,790	56.99	53,299,076	
	YTD	10,209,625	4,512,099,312	42.59	41,549,907	51.80	20,814,963	56.42	254,551,600	

EAST KENTUCKY POWER COOPERATIVE INC.
 Wholesale Power Accounting
 CO-OP Totals Billing Summary - CP Tariff

2007

April

CO-OP Name/EKPC	Month	YTD	KW	KWH	Base Mills/KWH	Fuel Charge	Fuel Mills/KWH	Surchage	Surchage Mills/KWH	Revenue
Burnside	Month		62	22,870	47.70	194	56.19	120	61.43	1,405
	YTD		367	166,947	42.77	1,506	51.79	778	56.45	9,424
East Ky Office	Month		815	543,475	39.37	4,609	47.85	2,424	52.31	28,428
	YTD		4,674	2,548,256	40.38	24,306	49.92	11,468	54.42	138,669
Smith Contruction	Month		20	15,667	37.79	133	46.28	68	50.62	793
	YTD		80	62,493	36.58	600	46.18	261	50.36	3,147
EKPC Subtotals	Month		897	582,012	39.65	4,936	48.13	2,612	52.62	30,626
	YTD		5,121	2,777,696	40.44	26,412	49.95	12,507	54.45	151,240
Totals	Month		2,144,200	935,855,769	43.84	7,793,156	52.17	4,505,402	56.98	53,329,702
	YTD		10,214,746	4,514,877,008	42.59	41,576,319	51.80	20,827,470	56.41	254,702,840

EAST KENTUCKY POWER COOPERATIVE INC.
 Wholesale Power Accounting
 Green Power Billing Summary

November 2006

CO-OP Name/EKPC	KWH	KWH Charge	Revenue
BIG SANDY RECC	Month	0.02375	57
	YTD		627
BLUE GRASS ENERGY	Month	0.02375	477
	YTD		4,965
CLARK ENERGY COOP	Month	0.02375	69
	YTD		771
CUMBERLAND VALLEY ELECTRIC	Month	0.02375	71
	YTD		775
FLEMING MASON RECC	Month	0.02375	0
	YTD		202
GRAYSON RECC	Month	0.02375	240
	YTD		2,638
INTER-COUNTY ECC	Month	0.02375	114
	YTD		1,258
JACKSON ENERGY COOP	Month	0.02375	423
	YTD		4,558
LICKING VALLEY RECC	Month	0.02375	78
	YTD		843
NOLIN RECC	Month	0.02375	675
	YTD		6,433
OWEN EC	Month	0.02375	5,197
	YTD		58,332
SALT RIVER RECC	Month	0.02375	1,214
	YTD		13,014
SHELBY ENERGY COOP	Month	0.02375	245
	YTD		2,655

EAST KENTUCKY POWER COOPERATIVE INC.
 Wholesale Power Accounting
 Green Power Billing Summary

November 2006

CO-OP Name/EKPC		KWH	KWH Charge	Revenue
SOUTH KENTUCKY RECC	Month	17,000	0.02375	404
	YTD	188,600		4,479
EKPC Subtotals	Month	390,000	0.02375	9,264
	YTD	4,275,700		101,550
Totals		390,000	0.02375	9,264
		4,275,700		101,550

EAST KENTUCKY POWER COOPERATIVE INC.
Wholesale Power Accounting
Green Power Billing Summary

December 2006

CO-OP Name/EKPC	KWH	KWH Charge	Revenue
BIG SANDY RECC	Month	0.02375	57
	YTD		684
BLUE GRASS ENERGY	Month	0.02375	477
	YTD		5,442
CLARK ENERGY COOP	Month	0.02375	67
	YTD		838
CUMBERLAND VALLEY ELECTRIC	Month	0.02375	71
	YTD		846
FLEMING MASON RECC	Month	0.02375	0
	YTD		202
GRAYSON RECC	Month	0.02375	242
	YTD		2,880
INTER-COUNTY ECC	Month	0.02375	114
	YTD		1,372
JACKSON ENERGY COOP	Month	0.02375	423
	YTD		4,981
LICKING VALLEY RECC	Month	0.02375	78
	YTD		921
NOLIN RECC	Month	0.02375	665
	YTD		7,098
OWEN EC	Month	0.02375	5,223
	YTD		63,555
SALT RIVER RECC	Month	0.02375	1,197
	YTD		14,211
SHELBY ENERGY COOP	Month	0.02375	240
	YTD		2,895

EAST KENTUCKY POWER COOPERATIVE INC.
Wholesale Power Accounting
Green Power Billing Summary

December 2006

CO-OP Name/EKPC		KWH	KWH Charge	Revenue
SOUTH KENTUCKY RECC	Month	16,100		382
	YTD	204,700	0.02375	4,861
EKPC Subtotals	Month	388,900		9,236
	YTD	4,664,600	0.02375	110,786
Totals		388,900	0.02375	9,236
		4,664,600		110,786

EAST KENTUCKY POWER COOPERATIVE INC.
 Wholesale Power Accounting
 Green Power Billing Summary

January 2007

CO-OP Name/EKPC	KWH	KWH Charge	Revenue
BIG SANDY RECC	Month 2,400	0.02375	57
	YTD 2,400		57
BLUE GRASS ENERGY	Month 20,100	0.02375	477
	YTD 20,100		477
CLARK ENERGY COOP	Month 2,800	0.02375	67
	YTD 2,800		67
CUMBERLAND VALLEY ELECTRIC	Month 3,000	0.02375	71
	YTD 3,000		71
FLEMING MASON RECC	Month 0	0.02375	0
	YTD 0		0
GRAYSON RECC	Month 10,100	0.02375	240
	YTD 10,100		240
INTER-COUNTY ECC	Month 4,800	0.02375	114
	YTD 4,800		114
JACKSON ENERGY COOP	Month 18,100	0.02375	430
	YTD 18,100		430
LICKING VALLEY RECC	Month 3,300	0.02375	78
	YTD 3,300		78
NOLIN RECC	Month 28,100	0.02375	667
	YTD 28,100		667
OWEN EC	Month 219,900	0.02375	5,223
	YTD 219,900		5,223
SALT RIVER RECC	Month 50,400	0.02375	1,197
	YTD 50,400		1,197
SHELBY ENERGY COOP	Month 10,100	0.02375	240
	YTD 10,100		240
SOUTH KENTUCKY RECC	Month 16,100	0.02375	382
	YTD 16,100		382
EKPC Subtotals	Month 389,200	0.02375	9,243
	YTD 389,200		9,243
Totals	Month 389,200	0.02375	9,243
	YTD 389,200		9,243

EAST KENTUCKY POWER COOPERATIVE INC.
 Wholesale Power Accounting
 Green Power Billing Summary

February 2007

CO-OP Name/EKPC	KWH	KWH Charge	Revenue
BIG SANDY RECC	Month	0.02375	57
	YTD		114
BLUE GRASS ENERGY	Month	0.02375	458
	YTD		935
CLARK ENERGY COOP	Month	0.02375	67
	YTD		134
CUMBERLAND VALLEY ELECTRIC	Month	0.02375	83
	YTD		154
FLEMING MASON RECC	Month	0.02375	0
	YTD		0
GRAYSON RECC	Month	0.02375	240
	YTD		480
INTER-COUNTY ECC	Month	0.02375	114
	YTD		228
JACKSON ENERGY COOP	Month	0.02375	413
	YTD		843
LICKING VALLEY RECC	Month	0.02375	78
	YTD		156
NOLIN RECC	Month	0.02375	634
	YTD		1,301
OWEN EC	Month	0.02375	5,508
	YTD		10,731
SALT RIVER RECC	Month	0.02375	1,178
	YTD		2,375
SHELBY ENERGY COOP	Month	0.02375	240
	YTD		480
SOUTH KENTUCKY RECC	Month	0.02375	371
	YTD		753
EKPC Subtotals	Month	0.02375	9,441
	YTD		18,684
Totals	Month	0.02375	9,441
	YTD		18,684

EAST KENTUCKY POWER COOPERATIVE INC.
Wholesale Power Accounting
Green Power Billing Summary

March 2007

CO-OP Name/EKPC	KWH	KWH Charge	Revenue
BIG SANDY RECC	Month	2,400	57
	YTD	7,200	171
BLUE GRASS ENERGY	Month	19,300	458
	YTD	58,700	1,393
CLARK ENERGY COOP	Month	2,800	67
	YTD	8,400	201
CUMBERLAND VALLEY ELECTRIC	Month	3,500	83
	YTD	10,000	237
FLEMING MASON RECC	Month	0	0
	YTD	0	0
GRAYSON RECC	Month	10,100	240
	YTD	30,300	720
INTER-COUNTY ECC	Month	4,800	114
	YTD	14,400	342
JACKSON ENERGY COOP	Month	17,000	404
	YTD	52,500	1,247
LICKING VALLEY RECC	Month	3,300	78
	YTD	9,900	234
NOLIN RECC	Month	27,000	641
	YTD	81,800	1,942
OWEN EC	Month	218,800	5,197
	YTD	670,600	15,928
SALT RIVER RECC	Month	51,400	1,221
	YTD	151,400	3,596
SHELBY ENERGY COOP	Month	10,100	240
	YTD	30,300	720
SOUTH KENTUCKY RECC	Month	15,900	378
	YTD	47,600	1,131
EKPC Subtotals	Month	386,400	9,178
	YTD	1,173,100	27,862
Totals	Month	386,400	9,178
	YTD	1,173,100	27,862

EAST KENTUCKY POWER COOPERATIVE INC.
Wholesale Power Accounting
Green Power Billing Summary

April 2007

CO-OP Name/EKPC	KWH	KWH Charge	Revenue
BIG SANDY RECC	Month	0.02375	57
	YTD		228
BLUE GRASS ENERGY	Month	0.02375	458
	YTD		1,851
CLARK ENERGY COOP	Month	0.02375	67
	YTD		268
CUMBERLAND VALLEY ELECTRIC	Month	0.02375	83
	YTD		320
FLEMING MASON RECC	Month	0.02375	0
	YTD		0
GRAYSON RECC	Month	0.02375	240
	YTD		960
INTER-COUNTY ECC	Month	0.02375	114
	YTD		456
JACKSON ENERGY COOP	Month	0.02375	418
	YTD		1,665
LICKING VALLEY RECC	Month	0.02375	78
	YTD		312
NOLIN RECC	Month	0.02375	641
	YTD		2,583
OWEN EC	Month	0.02375	5,197
	YTD		21,125
SALT RIVER RECC	Month	0.02375	1,221
	YTD		4,817
SHELBY ENERGY COOP	Month	0.02375	240
	YTD		960
SOUTH KENTUCKY RECC	Month	0.02375	371
	YTD		1,502
EKPC Subtotals	Month	0.02375	9,185
	YTD		37,047
Totals	Month	0.02375	9,185
	YTD		37,047

Company EAST KENTUCKY POWER COOPERATIVE, INC.
POWER TRANSACTION SCHEDULE



Month Ended NOVEMBER 2006

Billing Components

<u>Company Sales</u>	<u>Type of Transaction</u>	<u>KWH</u>	<u>Demand (\$)</u>	<u>Fuel Charges (\$)</u>	<u>Margin(+) or Loss (-)</u>	<u>Total Charges (\$)</u>
AEP	Emergency	1,000		26	74	100
AEP	Non-Displacement	100,000		2,603	2,197	4,800
Cargill	Non-Displacement	1,781,000		54,233	32,655	86,888
Duke Energy Ohio	Emergency	1,000		62	38	100
LG&E	Emergency	28,000		815	1,985	2,800
LG&E	Non-Displacement	275,000		8,005	4,420	12,425
PJM	Non-Displacement	7,773,000		252,119	130,504	382,623
Oglethorpe	Non-Displacement	50,000		1,374	1,276	2,650
TVA	Non-Displacement	3,865,000		168,258	(27,838)	140,420
TOTAL		<u>13,874,000</u>	<u>0</u>	<u>487,495</u>	<u>145,311</u>	<u>632,806</u>

Company EAST KENTUCKY POWER COOPERATIVE, INC.
POWER TRANSACTION SCHEDULE



Month Ended DECEMBER 2006

Billing Components

<u>Company Sales</u>	<u>Type of Transaction</u>	<u>KWH</u>	<u>Demand (\$)</u>	<u>Fuel Charges (\$)</u>	<u>Margin(+) or Loss (-)</u>	<u>Total Charges (\$)</u>
AEP	Non-Displacement	850,000		20,764	7,986	28,750
Cargill	Non-Displacement	100,000		1,314	286	1,600
Duke Energy Ohio	Emergency	17,000		1,216	484	1,700
LG&E	Emergency	15,000		938	562	1,500
PJM	Non-Displacement	4,316,000		105,193	29,421	134,614
TVA	Non-Displacement	200,000		4,943	2,457	7,400
The Energy Authority	Non-Displacement	135,000		3,778	947	4,725
TOTAL		5,633,000	0	138,146	42,143	180,289

Company EAST KENTUCKY POWER COOPERATIVE, INC.
POWER TRANSACTION SCHEDULE



Month Ended JANUARY 2007

Company Sales	Type of Transaction	KWH	Demand (\$)	Billing Components		Margin(+) or Loss (-)	Total Charges (\$)
				Fuel Charges (\$)			
Cobb Electric	Non-Displacement	3,200,000		83,762		18,638	102,400
Duke Energy Ohio	Emergency	25,000		1,294		1,255	2,549
Duke Energy Ohio	Non-Displacement	42,000		812		(34)	778
LG&E	Emergency	52,000		2,956		2,516	5,472
Miso	Non-Displacement	150,000		3,716		3,239	6,955
PJM	Non-Displacement	3,103,000		75,313		24,840	100,153
TVA	Non-Displacement	50,000		1,221		779	2,000
TOTAL		<u>6,622,000</u>	<u>0</u>	<u>169,074</u>		<u>51,233</u>	<u>220,307</u>

EAST KENTUCKY POWER COOPERATIVE, INC.
POWER TRANSACTION SCHEDULE



Month Ended FEBRUARY 2007

Billing Components

<u>Company Sales</u>	<u>Type of Transaction</u>	<u>KWH</u>	<u>Demand (\$)</u>	<u>Fuel Charges (\$)</u>	<u>Margin(+)</u> or <u>Loss (-)</u>	<u>Total Charges (\$)</u>
Associated	Non-Displacement	50,000		1,178	922	2,100
Miso	Emergency	107,000		6,931	5,061	11,992
Miso	Non-Displacement	475,000		30,770	(12,279)	18,491
PJM	Non-Displacement	365,000		8,744	8,013	16,757
TVA	Non-Displacement	800,000		47,214	(5,614)	41,600
The Energy Authority	Non-Displacement	50,000		1,227	573	1,800
TOTAL		1,847,000	0	96,064	(3,324)	92,740

Company EAST KENTUCKY POWER COOPERATIVE, INC.
 POWER TRANSACTION SCHEDULE
 Month Ended MARCH 2007



Billing Components

<u>Company Sales</u>	<u>Type of Transaction</u>	<u>KWH</u>	<u>Demand (\$)</u>	<u>Fuel Charges (\$)</u>	<u>Margin(+) or Loss (-)</u>	<u>Total Charges (\$)</u>
AEP	Non-Displacement	225,000		5,841	5,109	10,950
Cargill	Non-Displacement	1,600,000		42,797	30,803	73,600
Cobb Electric	Non-Displacement	2,130,000		55,515	47,445	102,960
LG&E	Non-Displacement	1,525,000		35,148	31,977	67,125
Miso	Emergency	123,000		3,340	6,848	10,188
Miso	Non-Displacement	13,500,000		366,618	296,272	662,890
PJM	Non-Displacement	2,554,000		66,134	47,133	113,267
TVA	Non-Displacement	7,500,000		195,364	181,411	376,775
The Energy Authority	Non-Displacement	1,162,000		29,037	11,316	40,353
TOTAL		<u>30,319,000</u>	<u>0</u>	<u>799,794</u>	<u>658,314</u>	<u>1,458,108</u>

Company EAST KENTUCKY POWER COOPERATIVE, INC.
POWER TRANSACTION SCHEDULE



Month Ended APRIL 2007

Billing Components

Company Sales	Type of Transaction	KWH	Demand (\$)	Fuel Charges (\$)	Margin(+)/or Loss (-)	Total Charges (\$)
LG&E	Non-Displacement	75,000		1,912	2,738	4,650
Miso	Emergency	99,000		7,588	2,662	10,250
PJM	Non-Displacement	417,000		10,611	7,337	17,948
TVA	Non-Displacement	75,000		3,659	241	3,900
TOTAL		666,000	0	23,770	12,978	36,748

EAST KENTUCKY POWER COOPERATIVE, INC

PSC CASE NO. 2007-00277

FUEL ADJUSTMENT CLAUSE

INFORMATION REQUEST RESPONSE

COMMISSION STAFF'S INFORMATION REQUEST DATED 08/03/07

REQUEST 5

RESPONSIBLE PARTY: Gerard B. Bordes

Request 5. List East Kentucky's scheduled, actual, and forced outages between November 1, 2006 and April 30, 2007.

Response 5. See attached pages 2 through 36.



Production Management Reporting System

Appendix B

From: Nov. 1, 2006 thru April 30, 2007

Dale Power Station

Unit One

Date	Time Off/On	Available MW	Forced or Scheduled	Status	Actual		Cause or Reason
					Hours	Minutes	
12/07/2006	1649	0.0	Forced	Maintenance	0	25	Unit tripped due to 1 A pulverizer motor short.
12/10/2006	0959	0.0	Forced	Maintenance	48	30	Waterwall tube leak.
02/18/2007	0741	0.0	Forced	Maintenance	26	28	Water wall tube leak.
02/24/2007	1420	0.0	Forced	Maintenance	72	50	Water wall tube leak.
03/23/2007	2307	0.0	Forced	Maintenance	75	25	Waterwall tube leak.
04/13/2007	2234	0.0	Forced	Maintenance	26	33	Waterwall tube leak.



Production Management Reporting System

Appendix B

From: Nov. 1, 2006 thru April 30, 2007

Dale Power Station

Unit Two

Date	Time Off/On	Available MW	Forced or Scheduled	Status	Actual		Cause or Reason
					Hours	Minutes	
01/11/2007	1230	0.0	Forced	Maintenance	25	45	Waterwall tube leak.



Production Management Reporting System

Appendix B

From: Nov. 1, 2006 thru April 30, 2007

Dale Power Station

Unit Three

Date	Time Off/On	Available MW	Forced or Scheduled	Status	Actual		Cause or Reason
					Hours	Minutes	
11/01/2006	0000	0.0	Forced	Maintenance	37	11	Regenerating tube leak.
11/16/2006	1147	0.0	Forced	Maintenance	38	27	Waterwall tube leak.
02/09/2007	1130	0.0	Forced	Maintenance	42	37	Regenerating tube leak.
02/11/2007	0724	0.0	Forced	Maintenance	30	34	Regenerating tube leak.
03/31/2007	1822	0.0	Forced	Maintenance	0	56	Low air flow - 2 feeder tripped.
04/10/2007	1027	0.0	Forced	Maintenance	61	9	Regenerating tube leak.



Production Management Reporting System

Appendix B

From: Nov. 1, 2006 thru April 30, 2007

Dale Power Station

Unit Four

Date	Time Off/On	Available MW	Forced or Scheduled	Status	Actual		Cause or Reason
					Hours	Minutes	
01/07/2007	1356	0.0	Forced	Maintenance	39	25	Economizer tube leak.
03/02/2007	2254	0.0	Scheduled	Maintenance	293	20	Spring outage.
03/15/2007	1043	0.0	Forced	Maintenance	0	20	Coal feeder - lost fire.
03/18/2007	0804	0.0	Forced	Maintenance	32	56	Economizer tube leak.



Production Management Reporting System

Appendix B

From: Nov. 1, 2006 thru April 30, 2007

Cooper Power Station

Unit One

Date	Time Off/On	Available MW	Forced or Scheduled	Status	Actual		Cause or Reason
					Hours	Minutes	
11/01/2006	0000	0.0	Scheduled	Maintenance	99	42	Scheduled fall outage.
11/27/2006	0442	0.0	Forced	Maintenance	45	39	Tube leak in reheater.
03/01/2007	0831	0.0	Scheduled	Maintenance	14	52	Repaired steam leak on air ejector - cleaned condenser.
03/30/2007	1742	0.0	Forced	Maintenance	30	18	Submerged chain broke, repaired chain and sprockets.
04/01/2007	0000	0.0	Forced	Maintenance	3	9	Remainder of outage from last month on submerged chain.
04/01/2007	0321	0.0	Forced	Maintenance	0	31	Drum tripped on start-up.



Production Management Reporting System

Appendix B

From: Nov. 1, 2006 thru April 30, 2007

Cooper Power Station

Unit Two

Date	Time Off/On	Available MW	Forced or Scheduled	Status	Actual		Cause or Reason
					Hours	Minutes	
11/05/2006	2028	0.0	Scheduled	Maintenance	246	4	Fall maintenance outage.
11/16/2006	1147	0.0	Forced	Maintenance	169	7	2A P.A. fan damper was closed-boiler tripped while trying to open it.
03/22/2007	1040	0.0	Forced	Maintenance	40	57	Tube leak-lower section of boiler.
04/18/2007	1121	0.0	Forced	Maintenance	40	56	Tube leak in primary superheater.



Production Management Reporting System

Appendix B

From: Nov. 1, 2006 thru April 30, 2007

Spurlock Power Station

Unit One

Date	Time Off/On	Available MW	Forced or Scheduled	Status	Actual		Cause or Reason
					Hours	Minutes	
04/01/2007	0029	0.0	Scheduled	Maintenance	491	7	Scheduled spring maintenance outage.



Production Management Reporting System

Appendix B

From: Nov. 1, 2006 thru April 30, 2007

Spurlock Power Station

Unit Two

Date	Time Off/On	Available MW	Forced or Scheduled	Status	Actual		Cause or Reason
					Hours	Minutes	
04/22/2007	2320	0.0	Scheduled	Maintenance	166	58	Scheduled spring maintenance outage.
04/30/2007	0225	0.0	Forced	Maintenance	7	44	Bad fuse caused boiler tripped. Repaired vacuum leak before restart.



Production Management Reporting System

Appendix B

From: Nov. 1, 2006 thru April 30, 2007

Spurlock Power Station

Gilbert 3

Date	Time Off/On	Available MW	Forced or Scheduled	Status	Actual		Cause or Reason
					Hours	Minutes	
12/16/2006	1023	0.0	Forced	Maintenance	1	27	Boiler trip due to mistake in tuning controls.
03/31/2007	0303	0.0	Scheduled	Maintenance	20	57	Scheduled spring maintenance outage.
04/01/2007	0000	0.0	Scheduled	Maintenance	0	0	Scheduled spring maintenance outage.



Production Management Reporting System

Appendix B

From: Nov. 1, 2006 thru April 30, 2007

J.K. Smith

Unit Two

Date	Time Off/On	Available MW	Forced or Scheduled	Status	Actual		Cause or Reason
					Hours	Minutes	
11/01/2006	0000	0.0	Scheduled	Maintenance	183	0	A inspect
04/10/2007	0512	0.0	Forced	Maintenance	5	43	Contactora in generator 3-way switch burnt up.



Production Management Reporting System

Appendix B

From: Nov. 1, 2006 thru April 30, 2007

J.K. Smith

Unit Three

Date	Time Off/On	Available MW	Forced or Scheduled	Status	Actual		Cause or Reason
					Hours	Minutes	
03/19/2007	0700	0.0	Scheduled	Maintenance	106	0	Hot gas path inspection.



Production Management Reporting System

Appendix B

From: Nov. 1, 2006 thru April 30, 2007

J.K. Smith

Unit Five

Date	Time Off/On	Available MW	Forced or Scheduled	Status	Actual		Cause or Reason
					Hours	Minutes	
03/05/2007	0700	0.0	Scheduled	Maintenance	301	0	Combustion inspection on Unit 5.



Production Management Reporting System

Appendix B

From: Nov. 1, 2006 thru April 30, 2007

Green Valley Landfill

Unit One

Date	Time Off/On	Available MW	Forced or Scheduled	Status	Actual		Cause or Reason
					Hours	Minutes	
11/01/2006	1918	0.0	Scheduled	Maintenance	4	42	Unit offline for oil service.
11/11/2006	2252	0.0	Forced	Maintenance	3	8	Unit tripped due to detonation.
11/19/2006	2228	0.0	Forced	Maintenance	1	32	Unit tripped due to detonation.
11/24/2006	2142	0.0	Forced	Maintenance	2	18	Unit tripped due to flare malfunction.
12/11/2006	1951	0.0	Scheduled	Maintenance	1	54	Unit offline for maintenance on well field connections.
12/11/2006	2145	0.0	Forced	Maintenance	2	15	Unit offline due to battery failure.
12/25/2006	1747	0.0	Forced	Maintenance	6	13	Unit offline due to high detonation.
01/03/2007	1946	0.0	Forced	Maintenance	4	14	Cylinder head #12 failure.
01/10/2007	1237	0.0	Scheduled	Maintenance	13	4	Unit off line for top end maintenance.
02/06/2007	1049	0.0	Forced	Maintenance	13	11	Unit offline due to Rad. fan off balance.
02/07/2007	0000	0.0	Scheduled	Maintenance	2	35	Unit offline to make Rad. fan modification.
02/12/2007	2140	0.0	Forced	Maintenance	2	20	Unit offline due to flare malfunction.
02/21/2007	2215	0.0	Forced	Maintenance	1	45	Unit offline for oil, plug valve service,.
02/25/2007	2150	0.0	Forced	Maintenance	2	10	Unit offline due to detonation.
03/27/2007	2212	0.0	Forced	Maintenance	1	48	Unit offline for unknown reason.
04/05/2007	2332	0.0	Scheduled	Maintenance	0	28	Unit offline for oil service.
04/10/2007	2126	0.0	Scheduled	Maintenance	2	34	Unit offline for plug and valve service.

Production Management Reporting System

Appendix B

From: Nov. 1, 2006 thru April 30, 2007

PSC Request 5

Page 15 of 36

Green Valley Landfill

Unit Two

Date	Time Off/On	Available MW	Forced or Scheduled	Status	Actual		Cause or Reason
					Hours	Minutes	
11/07/2006	2337	0.0	Scheduled	Maintenance	0	23	Unit offline for oil service.
11/11/2006	2252	0.0	Forced	Maintenance	3	8	Unit off line, tripped due to detonation.
11/19/2006	2228	0.0	Forced	Maintenance	1	32	Unit off line, tripped due to detonation.
11/24/2006	2142	0.0	Forced	Maintenance	2	18	Unit tripped due to flare malfunction.
12/11/2006	1931	0.0	Scheduled	Maintenance	1	54	Unit offline for maintenance on well field connections.
12/11/2006	2125	0.0	Scheduled	Maintenance	2	35	Unit offline due to battery failure.
12/15/2006	2153	0.0	Scheduled	Maintenance	2	7	Unit offline for oil service.
12/23/2006	1951	0.0	Forced	Maintenance	4	9	Unit offline due to high detonation.
01/02/2007	1056	0.0	Forced	Maintenance	131	18	Unit off line for maintenance.
01/07/2007	2214	0.0	Forced	Maintenance	1	46	Breaker operation plant trip.
01/09/2007	1056	0.0	Scheduled	Maintenance	13	4	Unit off line for maintenance overhaul.
01/10/2007	0000	0.0	Forced	Maintenance	1	6	Unit off line due to turbo failure.
01/11/2007	1452	0.0	Forced	Maintenance	9	8	Unit off line due to turbo failure.
01/31/2007	2327	0.0	Scheduled	Maintenance	0	33	Unit off line to repair oil leak.
02/01/2007	0000	0.0	Forced	Maintenance	0	44	Unit offline to replace governor actuator.
02/07/2007	2305	0.0	Scheduled	Maintenance	0	55	Unit offline to make modification on the Rad. fan.
02/09/2007	2136	0.0	Scheduled	Maintenance	2	24	Unit offline to make valve adjustments.
02/12/2007	2140	0.0	Forced	Maintenance	2	20	Unit offline due to flare malfunction.
02/21/2007	2215	0.0	Forced	Maintenance	2	50	Unit offline for oil, plug valve service.
03/03/2007	2130	0.0	Forced	Maintenance	2	30	Unit offline due to emergency mode to E108/104 operation.
03/07/2007	2344	0.0	Scheduled	Maintenance	0	16	Unit offline to rebuilt R/H fuel reg.
03/09/2007	2209	0.0	Scheduled	Maintenance	1	51	Unit offline to replace R/H turbo.
03/29/2007	1825	0.0	Scheduled	Maintenance	5	35	Unit offline to rebuild fuel regulator, replace jacket water spool piece.
04/05/2007	2148	0.0	Scheduled	Maintenance	2	12	Unit offline for oil, plug valve service.
04/15/2007	2153	0.0	Forced	Maintenance	2	7	Unit trip due to high detonation caused by fuel enrichment(rain).



Production Management Reporting System

Appendix B

From: Nov. 1, 2006 thru April 30, 2007

PSC Request 5

Page 16 of 36

Green Valley Landfill

Unit Three

Date	Time Off/On	Available MW	Forced or Scheduled	Status	Actual		Cause or Reason
					Hours	Minutes	
11/01/2006	0000	0.0	Forced	Maintenance	17	24	Unit offline due to compression check, turbo failure.
11/06/2006	2010	0.0	Forced	Maintenance	3	50	Unit offline due to cyc. head #4 failure.
11/11/2006	1240	0.0	Forced	Maintenance	13	20	Unit tripped due to head failure.
11/17/2006	2135	0.0	Scheduled	Maintenance	2	25	Unit offline for oil, plug valve service, and flare adjustment.
11/24/2006	2142	0.0	Forced	Maintenance	2	18	Unit tripped due to flare malfunction.
12/11/2006	2206	0.0	Scheduled	Maintenance	1	54	Unit offline for maintenance on well field connections.
12/23/2006	1951	0.0	Forced	Maintenance	196	9	Unit offline due to high detonation.
01/03/2007	2335	0.0	Scheduled	Maintenance	0	25	Unit offline for oil service.
01/04/2007	0000	0.0	Forced	Maintenance	0	18	Unit offline due to high detonation.
01/07/2007	2214	0.0	Forced	Maintenance	1	46	Breaker operation plant trip
01/11/2007	2219	0.0	Scheduled	Maintenance	1	41	Unit off line for fuel comp belt replacement.
01/16/2007	1052	0.0	Scheduled	Maintenance	11	18	Unit off line for overhaul maintenance.
01/16/2007	2210	0.0	Forced	Maintenance	22	39	Unit off line due to faulty load sensor.
01/18/2007	2010	0.0	Forced	Maintenance	3	50	Unit off line to change out #9 cylinder head.
01/23/2007	2222	0.0	Forced	Maintenance	1	38	Unit off line to replace intake man. gasket.
01/31/2007	2112	0.0	Forced	Maintenance	2	48	Unit off line for intake inspection & flame arrestor replacement.
02/12/2007	2140	0.0	Forced	Maintenance	2	20	Unit offline due to flare malfunction.
02/25/2007	2127	0.0	Forced	Maintenance	2	33	Unit offline due to detonation.
03/02/2007	2120	0.0	Scheduled	Maintenance	2	40	Unit offline for oil, plug valve service.
03/03/2007	0000	0.0	Forced	Maintenance	2	30	Unit offline due to plant in emergency mode due to E108/104 operation.
04/13/2007	2135	0.0	Scheduled	Maintenance	2	25	Unit offline for plug, valve, and oil service.

**Production Management Reporting System****Appendix B****From: Nov. 1, 2006 thru April 30, 2007****PSC Request 5****Page 17 of 36****Laurel Ridge Landfill****Unit One**

Date	Time Off/On	Available MW	Forced or Scheduled	Status	Actual		Cause or Reason
					Hours	Minutes	
11/02/2006	1330	0.0	Scheduled	Maintenance	11	0	Unit offline due to detonation.
11/09/2006	2345	0.0	Forced	Maintenance	0	15	Unit offline due to cylinder not firing, replace spark plug.
11/12/2006	2200	0.0	Forced	Maintenance	2	0	Unit offline due to detonation.
11/14/2006	0700	0.0	Scheduled	Maintenance	17	0	Unit taken offline due to detonation.
11/17/2006	0000	0.0	Scheduled	Maintenance	98	0	Unit taken offline due to high vacuum on well field.
11/21/2006	2200	0.0	Forced	Maintenance	2	0	Unit offline for maintenance.
11/22/2006	1800	0.0	Forced	Maintenance	8	0	Plant tripped due to American Environmental working on flare.
11/26/2006	2300	0.0	Forced	Maintenance	1	0	Unit offline due to high vac on well field.
11/27/2006	0000	0.0	Scheduled	Maintenance	18	0	Unit taken offline due to high vac.
11/28/2006	0000	0.0	Scheduled	Maintenance	49	0	Unit offline to repair belts.
12/01/2006	0500	0.0	Forced	Maintenance	67	0	Unit off line due to high vacuum.
12/04/2006	0000	0.0	Scheduled	Maintenance	50	30	Unit off line for overhaul maintenance.
12/07/2006	0145	0.0	Forced	Maintenance	270	45	Unit off line due to detonation.
12/19/2006	0000	0.0	Forced	Maintenance	71	30	Unit off line for cylinder repair.
12/22/2006	0000	0.0	Forced	Maintenance	141	0	Unit off line due to detonation.
12/28/2006	0000	0.0	Forced	Maintenance	96	0	Unit off line due to detonation.
01/01/2007	0000	0.0	Forced	Maintenance	78	0	Unit off line due to high vacuum.
01/26/2007	2330	0.0	Forced	Maintenance	0	30	Unit off line due to detonation.
02/14/2007	0300	0.0	Forced	Maintenance	194	30	Unit off line due to high vacuum.
02/25/2007	2030	0.0	Forced	Maintenance	3	30	Unit off line due to tripp from well field getting rich.
02/27/2007	2345	0.0	Forced	Maintenance	1	15	Unit off line due to air compressor failure.
03/01/2007	0000	0.0	Scheduled	Maintenance	4	0	Repaired oil leak.
03/09/2007	2100	0.0	Forced	Maintenance	3	0	Unit off line tripped, due to well being raised.
03/19/2007	2345	0.0	Forced	Maintenance	0	30	Unit off line due to fowled plug.
03/22/2007	2015	0.0	Scheduled	Maintenance	3	45	Unit off line due to well cap popping off.
03/25/2007	2315	0.0	Scheduled	Maintenance	0	45	Unit off line to change spark plugs.
03/31/2007	2200	0.0	Scheduled	Maintenance	2	0	Unit off line tripped, due to well cap popping off.
04/03/2007	2230	0.0	Forced	Maintenance	1	30	Unit offline due to lack of gas fuel field high vacuum.
04/05/2007	2300	0.0	Forced	Maintenance	3	0	Unit off line due to a slug of water raising vacuum levels.



Production Management Reporting System

Appendix B

From: Nov. 1, 2006 thru April 30, 2007

Laurel Ridge Landfill

Unit One

Date	Time Off/On	Available MW	Forced or Scheduled	Status	Actual		Cause or Reason
					Hours	Minutes	
04/13/2007	0600	0.0	Forced	Maintenance	88	0	Unit off line due to detonation.
04/17/2007	0300	0.0	Forced	Maintenance	24	0	Unit off & on line due to trouble shooting.
04/28/2007	2100	0.0	Forced	Maintenance	3	0	Unit off line due to high water in knock out tank repair.

**Production Management Reporting System****Appendix B****From: Nov. 1, 2006 thru April 30, 2007****PSC Request 5****Page 19 of 36****Laurel Ridge Landfill****Unit Two**

Date	Time Off/On	Available MW	Forced or Scheduled	Status	Actual		Cause or Reason
					Hours	Minutes	
11/21/2006	2200	0.0	Forced	Maintenance	8	0	Plant tripped due to American Environmental working on flare.
11/23/2006	2200	0.0	Forced	Maintenance	2	0	Plant tripped due to well cap popping off.
11/27/2006	2330	0.0	Forced	Maintenance	5	15	Plant tripped due to high vacuum.
12/08/2006	2300	0.0	Forced	Maintenance	1	0	Unit off line due to compressor freezing up.
12/19/2006	1515	0.0	Forced	Maintenance	12	45	Unit off line due to flare shut down.
12/25/2006	2245	0.0	Forced	Maintenance	1	15	Unit off line due to detonation.
12/29/2006	2300	0.0	Scheduled	Maintenance	49	0	Unit off line for valve adjustment.
01/01/2007	2300	0.0	Scheduled	Maintenance	240	0	Unit offline for detonation.
01/11/2007	2300	0.0	Scheduled	Maintenance	1	0	Unit off line for oil change.
01/26/2007	2330	0.0	Forced	Maintenance	0	30	Unit off line due to plant tripp, compressor shut down.
01/31/2007	2300	0.0	Forced	Maintenance	1	0	Unit off line due to detonation.
02/04/2007	2145	0.0	Scheduled	Maintenance	2	15	Unit off line for maintenance.
02/05/2007	0000	0.0	Forced	Maintenance	192	30	Unit off line due to low methane quality.
02/22/2007	2300	0.0	Forced	Maintenance	1	0	Unit off line for spark plug change.
02/25/2007	2100	0.0	Forced	Maintenance	3	0	Unit off line due to tripp, well field getting rich.
02/27/2007	2345	0.0	Forced	Maintenance	24	0	Unit off line due to air compressor failure.
03/01/2007	0000	0.0	Scheduled	Maintenance	0	30	Unit off line due to air compressor failure.
03/08/2007	2330	0.0	Forced	Maintenance	3	30	Unit off line due to detonation.
03/12/2007	2330	0.0	Forced	Maintenance	0	30	Unit off line to replace fowled plug.
03/22/2007	2015	0.0	Scheduled	Maintenance	3	45	Unit off line due to well cap popping off.
03/29/2007	0045	0.0	Forced	Maintenance	23	15	Unit off line due to high vacuum.
03/30/2007	0000	0.0	Scheduled	Maintenance	7	30	Unit off line due to detonation.
03/31/2007	1830	0.0	Scheduled	Maintenance	5	30	Unit off line due to wellcap popping off.
04/03/2007	2230	0.0	Forced	Maintenance	1	30	Unit off line, plant tripp due to storms.
04/05/2007	2300	0.0	Forced	Maintenance	3	0	Unit off line due to a slug of water raising vacuum levels.
04/14/2007	1100	0.0	Forced	Maintenance	42	15	Unit off line tripped on detontation.
04/28/2007	2100	0.0	Forced	Maintenance	3	0	Unit off line due to high water in knock out tank repair.

**Production Management Reporting System****Appendix B****From: Nov. 1, 2006 thru April 30, 2007****PSC Request 5****Page 20 of 36****Laurel Ridge Landfill****Unit Three**

Date	Time Off/On	Available MW	Forced or Scheduled	Status	Actual		Cause or Reason
					Hours	Minutes	
11/20/2006	2300	0.0	Scheduled	Maintenance	1	0	Unit offline for oil, plug valve service, and flare adjustment.
11/21/2006	0000	0.0	Forced	Maintenance	2	0	Plant tripped due to American Environmental working on flare.
11/22/2006	2000	0.0	Forced	Maintenance	6	0	Plant tripped due to American Environmental working on field.
11/27/2006	2330	0.0	Forced	Maintenance	5	15	Plant taken offline due to high vacuum.
12/05/2006	1900	0.0	Forced	Maintenance	10	15	Unit off line tripped due to phase over voltage.
12/08/2006	2300	0.0	Forced	Maintenance	1	0	Unit off line due to compressor freezing up.
12/19/2006	1230	0.0	Forced	Maintenance	15	30	Unit off line due to loss of turbo during startup.
01/10/2007	2230	0.0	Scheduled	Maintenance	6	30	Unit off line for maintenance.
01/26/2007	2300	0.0	Forced	Maintenance	1	0	Unit off line due to air compressor shut down.
01/31/2007	2200	0.0	Scheduled	Maintenance	2	0	Unit off line for valve adjustment.
02/01/2007	0000	0.0	Scheduled	Maintenance	2	0	Unit off line due to valve adjustment.
02/20/2007	0100	0.0	Forced	Maintenance	191	30	Unit off line due to high vacuum.
03/09/2007	2100	0.0	Forced	Maintenance	3	0	Unit off line due to wells being raised.
03/12/2007	2300	0.0	Scheduled	Maintenance	1	0	Unit off line to replace plugs.
03/14/2007	2315	0.0	Scheduled	Maintenance	120	45	Unit off line to begin overhaul maintenance.
03/20/2007	0300	0.0	Forced	Maintenance	163	45	Unit off line due to high vacuum.
03/31/2007	2200	0.0	Scheduled	Maintenance	2	0	Unit off line due to wellcap popping off.
04/03/2007	2230	0.0	Forced	Maintenance	1	30	Unit off line plant tripp due to storms.
04/05/2007	2300	0.0	Forced	Maintenance	3	0	Unit off line due to a slug of water raising water levels.
04/09/2007	2200	0.0	Scheduled	Maintenance	2	0	Unit offline for oil, plug valve service, and flare adjustment.
04/28/2007	2100	0.0	Forced	Maintenance	3	0	Unit off line due to high water in knock out tank repair.

**Production Management Reporting System****Appendix B****From: Nov. 1, 2006 thru April 30, 2007****PSC Request 5****Page 21 of 36****Laurel Ridge Landfill****Unit Four**

Date	Time Off/On	Available MW	Forced or Scheduled	Status	Actual		Cause or Reason
					Hours	Minutes	
11/20/2006	2345	0.0	Scheduled	Maintenance	2	15	Unit offline due to cold #5 cyc. (replaced spark plug).
11/21/2006	0200	0.0	Forced	Maintenance	2	0	Plant trip due to American Environmental working on flare.
11/22/2006	2000	0.0	Forced	Maintenance	6	0	Plant trip due to American Environmental working on well field.
11/27/2006	2330	0.0	Forced	Maintenance	5	15	Unit taken offline due to high vacuum.
12/06/2006	0230	0.0	Scheduled	Maintenance	28	30	Unit off line due to overhaul maintenance.
12/08/2006	2300	0.0	Forced	Maintenance	1	0	Unit off line due to compressor freezing up.
12/19/2006	1515	0.0	Forced	Maintenance	12	45	Unit offline due to flare repairs.
01/21/2007	2300	0.0	Scheduled	Maintenance	1	0	Unit off line for maintenance.
01/22/2007	0000	0.0	Forced	Maintenance	29	0	Unit off line for maintenance.
01/26/2007	2330	0.0	Forced	Maintenance	0	30	Unit off line due to maintenance.
02/19/2007	2145	0.0	Forced	Maintenance	2	15	Unit off line due to over heating, adjust belts and replaced line.
02/22/2007	1730	0.0	Forced	Maintenance	30	0	Unit off line for radiator fan maintenance.
02/24/2007	0000	0.0	Forced	Maintenance	64	0	Unit off line to allow field to recover.
02/27/2007	2000	0.0	Forced	Maintenance	4	30	Unit off line due to air compressor failure.
03/09/2007	2100	0.0	Forced	Maintenance	3	0	Unit off line due to wells being raised.
03/12/2007	2330	0.0	Scheduled	Maintenance	4	15	Unit off line for oil change and valve adjustment.
03/22/2007	2015	0.0	Scheduled	Maintenance	3	45	Unit off line due to well cap popping off.
03/31/2007	2200	0.0	Scheduled	Maintenance	2	0	Unit off line due to well cap popping off.
04/01/2007	0000	0.0	Forced	Maintenance	24	0	Unit off line due to high o2.
04/03/2007	2230	0.0	Forced	Maintenance	1	30	Unit off line plant tripp due to storms.
04/05/2007	2300	0.0	Forced	Maintenance	3	0	Unit off line due to a slug of water raising vacuum levels.
04/14/2007	1900	0.0	Forced	Maintenance	34	15	Unit off line due to detonation.
04/17/2007	1900	0.0	Scheduled	Maintenance	5	0	Unit offline for oil, plug valve service, and flare adjustment.
04/28/2007	2100	0.0	Forced	Maintenance	3	0	Unit off line due to high water in knock out tank repair.



Production Management Reporting System

Appendix B

From: Nov. 1, 2006 thru April 30, 2007

PSC Request 5

Page 22 of 36

Laurel Ridge Landfill

Unit Five

Date	Time Off/On	Available MW	Forced or Scheduled	Status	Actual		Cause or Reason
					Hours	Minutes	
11/08/2006	2000	0.0	Scheduled	Maintenance	1	0	Unit offline for oil service.
11/08/2006	2100	0.0	Forced	Maintenance	3	0	Unit tripped, unknown cause.
11/21/2006	2200	0.0	Scheduled	Maintenance	2	0	Plant tripped due to American Environmental working on flare.
11/22/2006	0000	0.0	Forced	Maintenance	8	0	Unit off due to American Environmental working on well field.
11/26/2006	2330	0.0	Forced	Maintenance	1	0	High vacuum on well field.
11/27/2006	0030	0.0	Scheduled	Maintenance	2	0	Unit offline for oil, plug valve service, and flare adjustment.
11/28/2006	1915	0.0	Forced	Maintenance	4	45	Belts repaired, but plant tripped again due to flare complications.
12/08/2006	2300	0.0	Forced	Maintenance	1	0	Unit off line due to air compressor freezing up.
12/13/2006	2330	0.0	Forced	Maintenance	0	30	Unit off line for oil change.
12/18/2006	0600	0.0	Forced	Maintenance	26	45	Unit off line due to high vacuum.
12/20/2006	2000	0.0	Forced	Maintenance	4	0	Unit off line due to flare repairs.
12/28/2006	2345	0.0	Scheduled	Maintenance	0	15	Unit offline for detonation.
12/29/2006	0000	0.0	Scheduled	Maintenance	1	30	Unit offline for detonation.
01/11/2007	0600	0.0	Forced	Maintenance	166	30	Unit off line due to high vacuum.
01/26/2007	2330	0.0	Forced	Maintenance	0	30	Unit off line due to air compressor shut down.
01/28/2007	2200	0.0	Forced	Maintenance	72	0	Unit off line for maintenance.
02/25/2007	2100	0.0	Forced	Maintenance	3	0	Unit off line due to tripp, well field getting rich.
02/27/2007	2345	0.0	Forced	Maintenance	0	45	Unit off line due to air compressor failure.
03/01/2007	0430	0.0	Forced	Maintenance	283	0	Unit off line due to high vacuum.
03/13/2007	0345	0.0	Forced	Maintenance	43	45	Unit offline due to lack of gas fuel field high vacuum.
03/18/2007	2330	0.0	Forced	Maintenance	42	30	Unit offline due to lack of gas fuel field high vacuum.
03/21/2007	1400	0.0	Forced	Maintenance	10	0	Unit off line for overhaul maintenance.
03/22/2007	0000	0.0	Scheduled	Maintenance	3	45	Unit off line due to well cap popping off.
03/25/2007	0715	0.0	Forced	Maintenance	160	45	Unit off line due to methane drop.
04/01/2007	0000	0.0	Forced	Maintenance	299	0	Unit off line due to high o2.
04/18/2007	0300	0.0	Scheduled	Maintenance	309	0	Unit off line due to high vacuum.

Production Management Reporting System**Appendix B**

From: Nov. 1, 2006 thru April 30, 2007

PSC Request 5

Page 23 of 36

Bavarian Landfill**Unit One**

Date	Time Off/On	Available MW	Forced or Scheduled	Status	Actual		Cause or Reason
					Hours	Minutes	
11/14/2006	1356	0.0	Scheduled	Maintenance	19	23	Unit off line for overhaul maintenance.
11/16/2006	1400	0.0	Forced	Maintenance	10	0	Unit off line for overhaul maintenance.
12/04/2006	2321	0.0	Scheduled	Maintenance	0	39	Unit off line due to maintenance.
12/11/2006	2026	0.0	Scheduled	Maintenance	3	34	Unit off line for valve adjustment.
12/18/2006	2325	0.0	Scheduled	Maintenance	0	35	Unit off line for oil and filter change.
12/29/2006	2052	0.0	Scheduled	Maintenance	3	8	Unit off line for bridge/valve adjusement.
12/31/2006	1812	0.0	Forced	Maintenance	5	48	Unit off line for detonation.
01/17/2007	2325	0.0	Forced	Maintenance	7	29	Unit off line due to power outage.
01/19/2007	2328	0.0	Scheduled	Maintenance	0	32	Unit off line for oil and filter change.
01/26/2007	1623	0.0	Forced	Maintenance	10	51	Unit off line due to water in fuel line.
01/29/2007	2320	0.0	Scheduled	Maintenance	0	40	Unit off line for oil and filter change.
02/02/2007	2056	0.0	Forced	Maintenance	3	4	Unit off line, plant tripped due to fuel skid low suction pressure.
02/06/2007	2334	0.0	Forced	Maintenance	4	38	Unit off line due to glycol fan out of balance.
02/08/2007	2135	0.0	Forced	Maintenance	2	33	Unit off line due to fuel skid low suction pressure.
02/10/2007	1935	0.0	Forced	Maintenance	6	39	Unit off line due to fuel skid low suction pressure.
02/12/2007	1732	0.0	Forced	Maintenance	6	28	Unit off line, plant tripped due to burnt wishbone in 104 breaker.
02/14/2007	2107	0.0	Scheduled	Maintenance	2	53	Unit off line due to bridge/valve adjustment.
02/16/2007	2324	0.0	Forced	Maintenance	0	36	Unit off line, spark plugs replaced.
02/28/2007	2106	0.0	Forced	Maintenance	2	54	Unit off line due to plant tripp, breaker operation by Owen Electric.
03/08/2007	2325	0.0	Scheduled	Maintenance	0	35	Unit offline for oil service.
03/14/2007	2238	0.0	Scheduled	Maintenance	0	45	Unit offline to rebuild regulator and replace actuator.
03/14/2007	2323	0.0	Forced	Maintenance	0	37	Unit tripped due to high vacuum at flare.
03/17/2007	1819	0.0	Forced	Maintenance	5	41	Unit tripped due to broken belt on gas compressor.
04/02/2007	2040	0.0	Scheduled	Maintenance	8	30	Unit offline due to maintenance on fuel skid.
04/05/2007	2100	0.0	Scheduled	Maintenance	3	0	Unit offline to repair oil leaks.
04/12/2007	1219	0.0	Forced	Maintenance	11	41	Unit offline to replace cylinder pack.



Production Management Reporting System

Appendix B

From: Nov. 1, 2006 thru April 30, 2007

Bavarian Landfill

Unit Two

Date	Time Off/On	Available MW	Forced or Scheduled	Status	Actual		Cause or Reason
					Hours	Minutes	
11/15/2006	1647	0.0	Forced	Maintenance	37	58	Unit burnt cylinder #2.
11/20/2006	2315	0.0	Forced	Maintenance	24	45	Unit offline to change out Cat plugs.
11/28/2006	2247	0.0	Scheduled	Maintenance	15	2	Unit off line for overhaul.
12/13/2006	2125	0.0	Scheduled	Maintenance	2	35	Unit off line for bridge/valve adjustment.
12/31/2006	1810	0.0	Forced	Maintenance	5	50	Unit off line for detonation.
01/03/2007	2322	0.0	Scheduled	Maintenance	0	38	Unit off line for oil & filter change.
01/12/2007	2037	0.0	Scheduled	Maintenance	3	23	Unit off line for bridge/valve adjustment.
01/17/2007	2325	0.0	Forced	Maintenance	7	27	Unit off line due to power outage.
01/26/2007	1623	0.0	Forced	Maintenance	10	50	Unit off line due to water in fuel line.
02/02/2007	2033	0.0	Forced	Maintenance	3	27	Unit off line, plant tripp due to fuel skid low suction pressure.
02/08/2007	2135	0.0	Forced	Maintenance	4	56	Unit off line, plant tripp due to fuel skid low suction pressure.
02/10/2007	1935	0.0	Forced	Maintenance	6	41	Unit off line, plant tripp due to fuel skid low suction pressure.
02/12/2007	1723	0.0	Forced	Maintenance	6	37	Unit off line, plant tripped due to burnt wishbone in 104 breaker.
02/28/2007	2017	0.0	Forced	Maintenance	3	43	Unit off line, plant tripp - Breaker operation by Owen Elec.
03/05/2007	0030	0.0	Forced	Maintenance	23	30	Unit offline due to a plug and valve problem.
03/14/2007	2251	0.0	Scheduled	Maintenance	0	30	Unit offline due to high vacuum on flare.
03/14/2007	2321	0.0	Forced	Maintenance	0	39	Unit offline due to high vacuum on flare.
03/17/2007	1820	0.0	Forced	Maintenance	5	40	Unit tripped due to broken belt on gas compressor.
04/02/2007	2040	0.0	Scheduled	Maintenance	8	39	Unit offline to perform maintenance on fuel skid.
04/23/2007	2328	0.0	Scheduled	Maintenance	3	32	Unit offline for oil service.

**Production Management Reporting System****Appendix B****From: Nov. 1, 2006 thru April 30, 2007****PSC Request 5****Page 25 of 36****Bavarian Landfill****Unit Three**

Date	Time Off/On	Available MW	Forced or Scheduled	Status	Actual		Cause or Reason
					Hours	Minutes	
11/09/2006	2342	0.0	Scheduled	Maintenance	5	0	Unit offline for bridge/valve adjustment.
11/14/2006	2125	0.0	Scheduled	Maintenance	14	49	Unit off line for overhaul.
12/12/2006	2103	0.0	Scheduled	Maintenance	2	57	Unit off line for bridge/valve adjustment.
12/18/2006	2348	0.0	Forced	Maintenance	0	12	Unit off line for oil and filter change.
12/21/2006	2316	0.0	Scheduled	Maintenance	0	44	Unit off line due to oil and filter change.
12/31/2006	0439	0.0	Forced	Maintenance	19	21	Unit off line due to detonation.
01/01/2007	0000	0.0	Forced	Maintenance	0	30	Unit off line due to water in fuel line.
01/02/2007	2139	0.0	Scheduled	Maintenance	2	21	Unit off line due to bridge/valve adjustment.
01/17/2007	2325	0.0	Forced	Maintenance	8	19	Unit off line due to power outage.
01/23/2007	2314	0.0	Scheduled	Maintenance	0	46	Unit off line due to oil and filter change.
01/26/2007	1623	0.0	Forced	Maintenance	13	8	Unit off line due to water in fuel line.
02/02/2007	2054	0.0	Forced	Maintenance	3	6	Unit off line, plant tripp due to fuel skid low suction pressure.
02/08/2007	2135	0.0	Forced	Maintenance	2	36	Unit off line, plant tripp due to fuel skid low suction pressure.
02/10/2007	1935	0.0	Forced	Maintenance	6	51	Unit off line, plant tripp due to fuel skid low suction pressure.
02/12/2007	1710	0.0	Forced	Maintenance	6	50	Unit off line, plant tripped due to burnt wishbone in 104 breaker.
02/19/2007	2049	0.0	Scheduled	Maintenance	3	11	Unit off line for bridge/valve adjustment.
02/28/2007	1925	0.0	Forced	Maintenance	4	35	Unit off line, plant tripp breaker operation by Owen Elec.
03/01/2007	0000	0.0	Forced	Maintenance	54	0	Unit offline to replace actuator and governor control, and two batteries.
03/14/2007	2319	0.0	Forced	Maintenance	0	41	Unit offline due to high vacuum at flare.
03/17/2007	1851	0.0	Forced	Maintenance	5	9	Unit tripped due to broken belt on gas compressor.
03/21/2007	2330	0.0	Forced	Maintenance	0	30	Unit tripped while cleaning the emc2 pane.
04/02/2007	2041	0.0	Scheduled	Maintenance	9	6	Unit offline to perform maintenance on fuel skid.
04/11/2007	0630	0.0	Forced	Maintenance	39	56	Unit offline due to turbo failure.

**Production Management Reporting System****Appendix B****From: Nov. 1, 2006 thru April 30, 2007****PSC Request 5****Page 26 of 36****Bavarian Landfill****Unit Four**

Date	Time Off/On	Available MW	Forced or Scheduled	Status	Actual		Cause or Reason
					Hours	Minutes	
11/05/2006	2150	0.0	Forced	Maintenance	2	10	Unit down due to main water tank, low water level.
11/07/2006	2303	0.0	Forced	Maintenance	12	30	Turbo coolant leak.
11/16/2006	1905	0.0	Forced	Maintenance	8	6	Unit shut down due to high coolant temperature.
11/21/2006	1822	0.0	Forced	Maintenance	5	38	Plant down to change out Cat plugs on unit 2.
11/27/2006	2240	0.0	Scheduled	Maintenance	10	51	Unit off line for overhaul.
12/14/2006	2157	0.0	Scheduled	Maintenance	2	3	Unit off line for bridge/valve adjustment.
12/28/2006	2143	0.0	Forced	Maintenance	2	17	Unit off line for repairs to water pump, change oil & filter.
12/31/2006	0725	0.0	Forced	Maintenance	16	35	Unit off line due to detonation.
01/01/2007	0000	0.0	Forced	Maintenance	0	35	Unit off line due to water in fuel line.
01/11/2007	2038	0.0	Scheduled	Maintenance	3	22	Unit off line due to bridge/valve adjustment.
01/17/2007	2328	0.0	Forced	Maintenance	7	43	Unit off line due to power outage, blown fuse.
01/20/2007	2323	0.0	Forced	Maintenance	0	37	Unit off line to replace transformer and plug.
01/22/2007	2209	0.0	Forced	Maintenance	1	51	Unit off line #14 transformer wire harness shorted out.
01/26/2007	1623	0.0	Forced	Maintenance	10	55	Unit off line, water in fuel line.
01/30/2007	2328	0.0	Scheduled	Maintenance	0	32	Unit off line due to oil and filter change.
02/02/2007	2018	0.0	Forced	Maintenance	3	42	Unit off line due to fuel skid low suction pressure.
02/08/2007	2135	0.0	Forced	Maintenance	3	13	Unit off line due to fuel skid low suction pressure.
02/10/2007	1935	0.0	Forced	Maintenance	7	6	Unit off line due to fuel skid low suction pressure.
02/12/2007	1712	0.0	Forced	Maintenance	6	48	Unit off line plant tripped due to burnt wishbone in 104 breaker.
02/27/2007	2153	0.0	Scheduled	Maintenance	2	7	Unit off line for maint. valve/bridge adjustment.
02/28/2007	0000	0.0	Forced	Maintenance	2	57	Unit off line, plant tripped, breaker operation by Owen Elec.
03/08/2007	2327	0.0	Scheduled	Maintenance	0	33	Unit offline for oil service.
03/14/2007	2313	0.0	Forced	Maintenance	0	47	Unit offline due to high vacuum at flare.
03/17/2007	1812	0.0	Forced	Maintenance	5	48	Unit tripped due to broken belt on gas compressor.
04/02/2007	2041	0.0	Scheduled	Maintenance	8	10	Unit offline to perform maintenance on fuel skid.
04/04/2007	2217	0.0	Scheduled	Maintenance	4	26	Unit offline to repair oil leaks.

Production Management Reporting System

Appendix B

From: Nov. 1, 2006 thru April 30, 2007

PSC Request 5

Page 27 of 36

Hardin Co. Landfill

Unit One

Date	Time Off/On	Available MW	Forced or Scheduled	Status	Actual		Cause or Reason
					Hours	Minutes	
11/08/2006	2223	0.0	Forced	Maintenance	1	55	Unit off line due to relay tripp.
11/10/2006	2301	0.0	Forced	Maintenance	0	59	Generator tripped by well field work.
11/11/2006	0000	0.0	Scheduled	Maintenance	0	39	Adjusted fuel compressor.
11/16/2006	0744	0.0	Scheduled	Maintenance	6	22	Adjusted Valves and plugs.
11/16/2006	1406	0.0	Forced	Maintenance	10	29	Generator tripped due to relay tripp.
11/18/2006	2053	0.0	Scheduled	Maintenance	0	43	Repaired wiring.
11/18/2006	2136	0.0	Forced	Maintenance	4	9	Generator tripped due to relay trip.
11/20/2006	2324	0.0	Scheduled	Maintenance	0	24	All generators tripped, flare overcurrent.
11/20/2006	2348	0.0	Forced	Maintenance	2	45	Generator tripped flare overcurrent.
11/21/2006	0233	0.0	Scheduled	Maintenance	9	4	Replace two heads.
11/22/2006	2301	0.0	Forced	Maintenance	0	59	Fuel compressor tripped, high vacuum.
11/28/2006	2208	0.0	Forced	Maintenance	1	52	Flare shut down.
11/30/2006	2221	0.0	Forced	Maintenance	1	39	High vacuum.
12/01/2006	0000	0.0	Forced	Maintenance	0	25	Unit offline due to well field repairs.
12/04/2006	2154	0.0	Forced	Maintenance	9	15	Unit offline due to high level of cs-2.
12/05/2006	0709	0.0	Scheduled	Maintenance	0	25	Unit offline due to high level of cs-2 and utility trip.
12/06/2006	1355	0.0	Forced	Maintenance	10	44	Unit offline due to well field repairs.
12/14/2006	2244	0.0	Forced	Maintenance	1	16	Unit offline for well field repairs.
12/16/2006	1637	0.0	Forced	Maintenance	7	23	Unit offline due to breaker trip. Regular defective at the colesburg sub.
12/19/2006	2355	0.0	Forced	Maintenance	0	5	Units offline due to detonation.
12/22/2006	2332	0.0	Forced	Maintenance	0	28	Unit offline due to accidental fuel compressor trip.
12/23/2006	0000	0.0	Scheduled	Maintenance	0	40	Unit offline for maintenance on cylinder heads.
12/30/2006	2352	0.0	Forced	Maintenance	0	8	Unit offline for work on well fields.
01/03/2007	2238	0.0	Scheduled	Maintenance	1	22	Unit offline to repair fuel leak.
01/05/2007	2130	0.0	Scheduled	Maintenance	2	30	Unit offline for oil, plug valve service, and flare adjustment.
01/11/2007	2132	0.0	Forced	Maintenance	2	30	Unit offline due to gas supply.
01/19/2007	1836	0.0	Scheduled	Maintenance	5	24	Valve train inspection.
01/24/2007	2319	0.0	Scheduled	Maintenance	0	41	Unit offline for oil service.
02/04/2007	2134	0.0	Forced	Maintenance	2	26	Unit offline due to fuel compressor shutdown due to High suction scrubber.
02/06/2007	2342	0.0	Forced	Maintenance	3	57	Unit offline to work on flare.

**Production Management Reporting System****Appendix B**

From: Nov. 1, 2006 thru April 30, 2007

PSC Request 5

Page 28 of 36

Hardin Co. Landfill**Unit One**

Date	Time Off/On	Available MW	Forced or Scheduled	Status	Actual		Cause or Reason
					Hours	Minutes	
02/12/2007	2343	0.0	Forced	Maintenance	0	17	Unit offline due to fuel compressor shutdown on fault(overvoltage).
02/13/2007	0000	0.0	Scheduled	Maintenance	2	5	Unit offline for valve service.
02/14/2007	1231	0.0	Scheduled	Maintenance	11	29	Unit offline for valve service.
02/20/2007	2048	0.0	Forced	Maintenance	3	12	Unit offline due to fuel header damage, fire alarm test.
02/22/2007	2136	0.0	Forced	Maintenance	5	35	Unit offline due to shutdown on high vacuum.
02/27/2007	2129	0.0	Forced	Maintenance	1	33	Unit offline due to high vacuum.
02/27/2007	2302	0.0	Scheduled	Maintenance	24	58	Unit offline for oil service.
03/01/2007	0000	0.0	Forced	Maintenance	0	23	Unit offline due to well field work.
03/02/2007	2311	0.0	Forced	Maintenance	0	49	Unit offline due to blown fuse at substation.
03/06/2007	2203	0.0	Forced	Maintenance	1	57	Unit offline due to flare and fuel compressor shut down due to high vacuum.
03/09/2007	2142	0.0	Forced	Maintenance	2	18	Unit offline due to high vacuum.
03/11/2007	1713	0.0	Forced	Maintenance	6	47	Unit offline due to fuel compressor shutdown fault F7.
03/14/2007	2354	0.0	Forced	Maintenance	0	6	Unit offline due to fuel quality.
03/27/2007	2154	0.0	Forced	Maintenance	4	46	Unit offline due to detonation.
03/29/2007	2229	0.0	Forced	Maintenance	0	33	Unit offline to repair fuel leak.
03/29/2007	2302	0.0	Scheduled	Maintenance	0	58	Unit offline to repair fuel leak.
03/30/2007	2125	0.0	Forced	Maintenance	5	40	Unit offline due to gas supply.
03/31/2007	0305	0.0	Scheduled	Maintenance	3	7	Unit offline for oil, plug valve service, and flare adjustment.
04/08/2007	1707	0.0	Forced	Maintenance	6	53	Unit offline for multiple detonation.
04/18/2007	2349	0.0	Scheduled	Maintenance	0	11	Unit offline for fuel compressor repair.
04/22/2007	2332	0.0	Forced	Maintenance	2	20	Unit offline due to poor gas quality.

Production Management Reporting System

Appendix B

From: Nov. 1, 2006 thru April 30, 2007

PSC Request 5

Page 29 of 36

Hardin Co. Landfill

Unit Two

Date	Time Off/On	Available MW	Forced or Scheduled	Status	Actual		Cause or Reason
					Hours	Minutes	
11/02/2006	2356	0.0	Forced	Maintenance	0	4	Unit offline due to well field work.
11/09/2006	2339	0.0	Forced	Maintenance	1	23	Unit off line to replace two heads.
11/11/2006	2324	0.0	Scheduled	Maintenance	0	36	Adjust fuel compressor.
11/13/2006	2337	0.0	Scheduled	Maintenance	2	33	Right hand turbo charger.
11/16/2006	1651	0.0	Scheduled	Maintenance	0	20	Shut down well field repair.
11/16/2006	1711	0.0	Forced	Maintenance	7	6	Repair leak on fuel header.
11/19/2006	2214	0.0	Forced	Maintenance	2	0	Fuel compressor tripped due to high vacuum.
11/21/2006	2011	0.0	Scheduled	Maintenance	1	15	Repair oil leak on fuel compressor.
11/21/2006	2126	0.0	Forced	Maintenance	4	15	Fuel compressor shut down.
11/23/2006	2258	0.0	Scheduled	Maintenance	1	2	Unit offline for oil service.
11/28/2006	2210	0.0	Forced	Maintenance	1	54	Flare shut down.
12/01/2006	0000	0.0	Forced	Maintenance	0	34	Unit offline for well field repairs.
12/02/2006	0940	0.0	Scheduled	Maintenance	3	37	Unit offline for oil, plug valve service, and flare adjustment.
12/02/2006	1317	0.0	Forced	Maintenance	114	53	Unit offline due to switch gear failure.
12/09/2006	2203	0.0	Forced	Maintenance	1	57	Unit offline due to gas supply.
12/14/2006	2239	0.0	Forced	Maintenance	1	21	Unit offline due to well field repairs.
12/16/2006	1643	0.0	Forced	Maintenance	7	17	Unit offline due to utility breaker trip.
12/19/2006	2355	0.0	Forced	Maintenance	0	5	Units offline due to detonation.
12/21/2006	2303	0.0	Forced	Maintenance	11	18	Valve train inspection.
12/29/2006	2332	0.0	Forced	Maintenance	0	28	Unit offline due to well field repairs.
12/30/2006	0000	0.0	Scheduled	Maintenance	1	0	Unit offline for well field repairs, and to change oil.
12/30/2006	0100	0.0	Forced	Maintenance	0	41	Unit offline due to failed varistor.
01/05/2007	2357	0.0	Forced	Maintenance	0	3	Unit offline to adjust carborsators.
01/11/2007	1447	0.0	Forced	Maintenance	9	13	Unit offline due to flare and fuel compressor fault.
01/19/2007	2357	0.0	Forced	Maintenance	0	3	Unit offline due to gas supply.
01/25/2007	2109	0.0	Scheduled	Maintenance	2	51	Unit offline for valve adjustments.
01/31/2007	2156	0.0	Scheduled	Maintenance	2	4	Unit offline for replacement and inspecting valve heads.
02/01/2007	0000	0.0	Scheduled	Maintenance	11	19	Unit offline to inspect and replace cylinder heads.
02/02/2007	2316	0.0	Scheduled	Maintenance	0	44	Unit offline to repair oil leak.
02/04/2007	2135	0.0	Forced	Maintenance	2	25	Unit offline to shut down the high suction scrubber level.

**Production Management Reporting System****Appendix B**

From: Nov. 1, 2006 thru April 30, 2007

PSC Request 5

Page 30 of 36

Hardin Co. Landfill**Unit Two**

Date	Time Off/On	Available MW	Forced or Scheduled	Status	Actual		Cause or Reason
					Hours	Minutes	
02/06/2007	2342	0.0	Forced	Maintenance	3	54	Unit offline for flare maintenance.
02/09/2007	2357	0.0	Forced	Maintenance	0	3	Unit offline for well field maintenance.
02/12/2007	2343	0.0	Forced	Maintenance	0	17	Unit offline due to fuel compressor shut down on fault(overvoltage).
02/20/2007	2244	0.0	Forced	Maintenance	1	1	Unit offline due to fuel header damage.
02/20/2007	2345	0.0	Scheduled	Maintenance	0	15	Unit offline for fire alarm test.
02/22/2007	2126	0.0	Forced	Maintenance	5	45	Unit offline due to fuel compressor shutdown on high vacuum.
02/27/2007	1852	0.0	Forced	Maintenance	1	33	Unit offline for work on flare and shut down of high vacuum.
02/27/2007	2025	0.0	Scheduled	Maintenance	3	35	Unit offline due to gas supply.
03/01/2007	2004	0.0	Scheduled	Maintenance	3	18	Unit offline due to well field work.
03/01/2007	2322	0.0	Forced	Maintenance	1	27	Unit offline due to well field repair.
03/06/2007	2202	0.0	Forced	Maintenance	1	58	Unit offline due to flare and fuel compressor high vacuum.
03/07/2007	0000	0.0	Scheduled	Maintenance	0	36	Unit offline for oil service.
03/09/2007	2111	0.0	Forced	Maintenance	2	50	Unit offline due to high vacuum.
03/11/2007	1715	0.0	Forced	Maintenance	6	45	Unit offline due to fuel compressor high differential psi.
03/13/2007	1739	0.0	Scheduled	Maintenance	3	54	Unit offline due to detonation.
03/13/2007	2133	0.0	Forced	Maintenance	4	31	Unit offline for oil, plug valve service, and flare adjustment.
03/17/2007	2358	0.0	Forced	Maintenance	2	56	Unit offline while tuning the well field pumps.
03/21/2007	2208	0.0	Forced	Maintenance	1	52	Unit offline due to gas quality.
03/25/2007	2110	0.0	Forced	Maintenance	2	50	Unit offline due to fuel quality.
03/27/2007	2353	0.0	Forced	Maintenance	2	50	Unit offline due to fuel quality.
03/29/2007	2312	0.0	Forced	Maintenance	1	44	Unit offline for well field work.
03/31/2007	2056	0.0	Forced	Maintenance	3	4	Unit offline due to work in well field.
04/08/2007	1951	0.0	Forced	Maintenance	4	9	Unit offline due to multiple detonation.
04/11/2007	1841	0.0	Forced	Maintenance	5	19	Unit offline due to low oil level.
04/18/2007	2346	0.0	Scheduled	Maintenance	0	50	Unit offline to repair fuel compressor.

Production Management Reporting System

Appendix B

From: Nov. 1, 2006 thru April 30, 2007

PSC Request 5

Page 31 of 36

Hardin Co. Landfill

Unit Three

Date	Time Off/On	Available MW	Forced or Scheduled	Status	Actual		Cause or Reason
					Hours	Minutes	
11/02/2006	2355	0.0	Forced	Maintenance	0	5	Shut down caused by well field work.
11/08/2006	2048	0.0	Scheduled	Maintenance	12	47	Adjust valves.
11/09/2006	2357	0.0	Forced	Maintenance	0	3	Flare tripped all units.
11/10/2006	2256	0.0	Forced	Maintenance	1	4	Tripped by well field work.
11/11/2006	0000	0.0	Scheduled	Maintenance	0	40	Adjusted fuel compressor.
11/16/2006	1713	0.0	Scheduled	Maintenance	0	20	Shut down due to well field work.
11/16/2006	1733	0.0	Forced	Maintenance	6	34	Leak on fuel header.
11/19/2006	2213	0.0	Forced	Maintenance	1	57	Fuel compressor tripped due to high vacuum.
11/21/2006	2009	0.0	Scheduled	Maintenance	1	18	Repair oil leak fuel comp.
11/21/2006	2127	0.0	Forced	Maintenance	3	32	Repair oil leak fuel comp.
11/23/2006	2306	0.0	Scheduled	Maintenance	0	54	Unit offline for oil service.
11/28/2006	2209	0.0	Forced	Maintenance	1	51	Flare shut down.
12/01/2006	0000	0.0	Forced	Maintenance	0	41	Unit offline due to well field repairs.
12/02/2006	2248	0.0	Scheduled	Maintenance	1	12	Unit offline for R&I pt's.
12/04/2006	2153	0.0	Forced	Maintenance	9	22	Unit offline due to high level cs-2.
12/05/2006	0715	0.0	Scheduled	Maintenance	4	51	Unit offline due to high level cs-2 and a utility trip.
12/06/2006	1353	0.0	Forced	Maintenance	10	12	Unit offline due to well field repairs.
12/14/2006	2242	0.0	Forced	Maintenance	1	18	Unit offline due to well field repairs.
12/16/2006	1639	0.0	Forced	Maintenance	7	21	Unit offline due to breaker trip. Regulator defective at colesburg sub.
12/22/2006	2331	0.0	Forced	Maintenance	0	29	Unit offline due to accidental fuel compressor trip.
12/28/2006	1813	0.0	Scheduled	Maintenance	5	47	Unit offline for oil, plug valve service, and flare adjustment.
01/11/2007	2208	0.0	Forced	Maintenance	1	52	Unit offline due to gas supply.
01/13/2007	2357	0.0	Forced	Maintenance	0	3	Unit offline due to gas supply.
01/30/2007	2308	0.0	Scheduled	Maintenance	0	52	Unit offline for oil service.
02/04/2007	2135	0.0	Forced	Maintenance	2	25	Unit offline due to fuel compressor shutdown, high suction scrubber level.
02/06/2007	2339	0.0	Forced	Maintenance	3	59	Unit offline due to work on flare.
02/12/2007	2344	0.0	Forced	Maintenance	0	16	Unit offline due to fuel compressor shut down on fault f5(overvoltage).
02/14/2007	2221	0.0	Scheduled	Maintenance	13	40	Unit offline for maintenance on cylinder heads.
02/20/2007	2030	0.0	Forced	Maintenance	3	30	Unit offline due to fuel header damage.
02/21/2007	0000	0.0	Scheduled	Maintenance	1	34	Unit offline to adjust valves.



Production Management Reporting System

Appendix B

From: Nov. 1, 2006 thru April 30, 2007

Hardin Co. Landfill

Unit Three

Date	Time Off/On	Available MW	Forced or Scheduled	Status	Actual		Cause or Reason
					Hours	Minutes	
02/22/2007	1741	0.0	Scheduled	Maintenance	3	36	Unit offline to adjust valve #16.
02/22/2007	2117	0.0	Forced	Maintenance	5	54	Unit offline due to fuel compressor shut down on high vacuum.
02/27/2007	2225	0.0	Forced	Maintenance	1	35	Unit offline due to maintenance on flare and shutdown of high vacuum.
03/01/2007	2041	0.0	Scheduled	Maintenance	3	19	Unit offline for well field work.
03/02/2007	0000	0.0	Forced	Maintenance	0	44	Unit offline due to blown fuse at substation.
03/06/2007	2156	0.0	Forced	Maintenance	2	4	Unit offline due to flare and fuel compressor shut down on high vacuum.
03/09/2007	2148	0.0	Forced	Maintenance	2	14	Unit offline due to high vacuum.
03/11/2007	1721	0.0	Forced	Maintenance	6	39	Unit offline due to fuel compressor high differential psi.
03/14/2007	2151	0.0	Forced	Maintenance	2	9	Unit offline due to fuel quality.
03/23/2007	2314	0.0	Scheduled	Maintenance	0	46	Unit offline for oil service.
03/27/2007	2350	0.0	Forced	Maintenance	2	42	Unit offline due to gas supply.
03/29/2007	2312	0.0	Forced	Maintenance	1	45	Unit offline due to work in well fields.
03/31/2007	2055	0.0	Forced	Maintenance	3	5	Unit offline for work in well fields.
04/07/2007	1112	0.0	Scheduled	Maintenance	113	31	Unit offline to repair the coolant leak.
04/18/2007	2347	0.0	Scheduled	Maintenance	0	13	Unit offline for the fuel compressor repair.



Production Management Reporting System

Appendix B

From: Nov. 1, 2006 thru April 30, 2007

Pendleton Co. Landfill

Unit 001

Date	Time Off/On	Available MW	Forced or Scheduled	Status	Actual		Cause or Reason
					Hours	Minutes	
02/06/2007	1919	0.0	Scheduled	Maintenance	10	24	Unit offline for EPA testing.
02/08/2007	2328	0.0	Scheduled	Maintenance	0	32	Unit shut down to change fuel skid.
02/11/2007	0240	0.0	Forced	Maintenance	21	20	Unit offline due to condensate problems.
02/13/2007	2342	0.0	Scheduled	Maintenance	0	18	Unit offline for flare testing.
02/21/2007	2321	0.0	Scheduled	Maintenance	0	39	Unit offline for testing with Enercon.
02/26/2007	0209	0.0	Scheduled	Maintenance	8	0	Unit offline for oil service.
02/26/2007	1009	0.0	Forced	Maintenance	13	51	Unit offline for valve adjustment.
03/01/2007	0000	0.0	Scheduled	Maintenance	1	10	Unit offline for Lectrodryer testing.
03/07/2007	2349	0.0	Forced	Maintenance	0	11	Unit offline due to flare trip.
03/11/2007	2318	0.0	Forced	Maintenance	3	30	Unit offline for fire alarm testing.
03/13/2007	2203	0.0	Scheduled	Maintenance	1	57	Unit offline due to Lyons working on air compressor and air quantity.
03/24/2007	2102	0.0	Forced	Maintenance	2	58	Unit offline due to vibration.
03/26/2007	2343	0.0	Scheduled	Maintenance	0	17	Unit offline to change oil filter on fuel skid.
04/03/2007	2255	0.0	Scheduled	Maintenance	1	5	Unit offline for oil service.
04/06/2007	2324	0.0	Forced	Maintenance	0	36	Unit offline due to low air pressure.
04/09/2007	2345	0.0	Forced	Maintenance	0	15	Unit trip due to compressor overload.
04/10/2007	0000	0.0	Scheduled	Maintenance	0	25	Unit offline for maintenance.
04/11/2007	0042	0.0	Scheduled	Maintenance	3	35	Unit offline for oil, plug valve service, and flare adjustment.
04/11/2007	0417	0.0	Forced	Maintenance	19	43	Unit offline due to low fuel.
04/27/2007	2349	0.0	Forced	Maintenance	0	11	Unit offline due to gas problems.



Production Management Reporting System

Appendix B

From: Nov. 1, 2006 thru April 30, 2007

Pendleton Co. Landfill

Unit 002

Date	Time Off/On	Available MW	Forced or Scheduled	Status	Actual		Cause or Reason
					Hours	Minutes	
02/06/2007	0659	0.0	Scheduled	Maintenance	17	39	Unit offline due to EPA testing.
02/08/2007	2321	0.0	Scheduled	Maintenance	0	39	Unit offline due to changing fuel skid filter.
02/11/2007	0240	0.0	Forced	Maintenance	21	20	Unit offline due to condensate problems.
02/13/2007	2219	0.0	Scheduled	Maintenance	1	41	Unit offline for flare testing.
02/19/2007	2200	0.0	Scheduled	Maintenance	2	0	Unit offline to repair oil leak.
02/21/2007	2316	0.0	Scheduled	Maintenance	0	44	Unit offline for testing with Enercon.
02/26/2007	2258	0.0	Forced	Maintenance	17	2	Unit offline due to gas supply.
02/27/2007	1600	0.0	Scheduled	Maintenance	8	0	Unit offline for oil, plug valve service, and then gas supply.
02/28/2007	0000	0.0	Forced	Maintenance	24	0	Unit offline due to gas supply.
03/01/2007	0354	0.0	Forced	Maintenance	42	47	Unit offline for Lectrodryer testing.
03/03/2007	0000	0.0	Forced	Maintenance	46	20	Unit offline due to gas problems.
03/07/2007	2349	0.0	Forced	Maintenance	0	11	Unit tripped due to flare.
03/11/2007	2310	0.0	Forced	Maintenance	3	41	Unit offline for fire alarm testing.
03/13/2007	2203	0.0	Scheduled	Maintenance	1	57	Unit offline due to Lyons working on air compressor and air quantity.
03/20/2007	0455	0.0	Forced	Maintenance	21	50	Unit offline due to gas supply.
03/26/2007	2343	0.0	Scheduled	Maintenance	0	17	Unit offline due to gas supply.
04/06/2007	2324	0.0	Forced	Maintenance	0	36	Unit offline due to low air pressure.
04/09/2007	2200	0.0	Scheduled	Maintenance	1	45	Unit offline for oil, plug valve service, and flare adjustment.
04/09/2007	2345	0.0	Forced	Maintenance	0	15	Unit trip due to compressor overload.
04/16/2007	2156	0.0	Scheduled	Maintenance	4	50	Unit offline to adjust valves and plug change.
04/27/2007	2349	0.0	Forced	Maintenance	0	11	Unit offline due to gas problems.
04/30/2007	2255	0.0	Forced	Maintenance	1	5	Unit offline due to air leak.



Production Management Reporting System

Appendix B

From: Nov. 1, 2006 thru April 30, 2007

Pendleton Co. Landfill

Unit 003

Date	Time Off/On	Available MW	Forced or Scheduled	Status	Actual		Cause or Reason
					Hours	Minutes	
02/01/2007	0000	0.0	Forced	Maintenance	120	0	Unit offline due to gas supply.
02/06/2007	0000	0.0	Scheduled	Maintenance	5	44	Unit offline for EPA testing.
02/07/2007	1019	0.0	Forced	Maintenance	156	55	Unit offline due to gas supply.
02/14/2007	0000	0.0	Forced	Maintenance	120	0	Unit offline due to gas and regulator.
02/19/2007	0000	0.0	Scheduled	Maintenance	2	11	Unit offline to repair regulator.
02/21/2007	2316	0.0	Scheduled	Maintenance	0	44	Unit offline for testing with Enercon.
02/23/2007	2357	0.0	Forced	Maintenance	0	3	Unit offline due to being tripped by the Unit Operator.
03/01/2007	0000	0.0	Scheduled	Maintenance	1	10	Unit offline for Lectrodryer testing.
03/07/2007	2349	0.0	Forced	Maintenance	0	11	Unit offline due to gas supply.
03/11/2007	2310	0.0	Forced	Maintenance	6	18	Unit offline due to gas supply.
03/13/2007	0000	0.0	Forced	Maintenance	169	47	Unit offline due to Lyons working on air compressor and gas quantity.
03/21/2007	0244	0.0	Forced	Maintenance	261	16	Unit offline due to gas supply.
04/01/2007	0000	0.0	Forced	Maintenance	239	30	Unit offline due to gas problems.
04/11/2007	2320	0.0	Forced	Maintenance	118	53	Unit offline due to gas problems.
04/17/2007	0246	0.0	Forced	Maintenance	139	54	Unit offline due to gas problems.
04/23/2007	0333	0.0	Forced	Maintenance	187	20	Unit offline due to gas problems.

**Production Management Reporting System****Appendix B**

From: Nov. 1, 2006 thru April 30, 2007

PSC Request 5

Page 36 of 36

Pendleton Co. Landfill**Unit 004**

Date	Time Off/On	Available MW	Forced or Scheduled	Status	Actual		Cause or Reason
					Hours	Minutes	
02/07/2007	1924	0.0	Scheduled	Maintenance	5	29	Unit offline for EPA testing.
02/11/2007	0240	0.0	Forced	Maintenance	21	20	Unit offline due to condensate problems.
02/13/2007	2330	0.0	Scheduled	Maintenance	0	30	Unit offline for flare testing.
02/14/2007	0000	0.0	Forced	Maintenance	0	4	Unit offline due to being tripped by Unit Operator.
02/19/2007	0337	0.0	Forced	Maintenance	88	48	Unit offline due to gas supply.
02/23/2007	0000	0.0	Forced	Maintenance	73	2	Unit offline due to gas supply.
03/01/2007	0000	0.0	Scheduled	Maintenance	1	10	Unit offline due to Lectrodryer testing.
03/04/2007	2215	0.0	Scheduled	Maintenance	8	0	Unit offline for oil, plug valve service, and flare adjustment.
03/05/2007	0615	0.0	Forced	Maintenance	17	11	Unit offline due to gas supply.
03/06/2007	0211	0.0	Forced	Maintenance	163	46	Unit offline for testing field, and then due to gas supply.
03/13/2007	2203	0.0	Scheduled	Maintenance	1	57	Unit offline due to Lyons working on air compressor and air quantity.
03/20/2007	2153	0.0	Forced	Maintenance	2	7	Unit offline due to gas supply.
03/26/2007	2343	0.0	Scheduled	Maintenance	0	17	Unit offline due to gas supply.
03/28/2007	2215	0.0	Forced	Maintenance	1	45	Unit offline due to low oil level.
04/06/2007	2324	0.0	Forced	Maintenance	0	36	Unit offline due to low air pressure.
04/09/2007	2345	0.0	Forced	Maintenance	0	15	Unit offline due to compressor overload.
04/22/2007	2223	0.0	Scheduled	Maintenance	5	25	Unit offline for oil, plug valve service, and flare adjustment.
04/27/2007	0703	0.0	Forced	Maintenance	72	41	Unit offline due to gas problems.

EAST KENTUCKY POWER COOPERATIVE, INC

**PSC CASE NO. 2007-00277
FUEL ADJUSTMENT CLAUSE
INFORMATION REQUEST RESPONSE**

**COMMISSION STAFF'S INFORMATION REQUEST DATED 08/03/07
REQUEST 6**

RESPONSIBLE PARTY: Gerard B. Bordes

Request 6. List all existing fuel contracts categorized as long-term (i.e., more than 1 year in length). Provide the following information for each contract:

- a. Supplier's name and address.
- b. Name and location of production facility.
- c. Date when contract was executed.
- d. Duration of contract.
- e. Date(s) of each contract revision, modification or amendment.
- f. Annual tonnage requirements.
- g. Actual annual tonnage received since the contract's inception.
- h. Percent of annual requirements received during the contract's term.
- i. Base price.
- j. Total amount of price escalations to date.
- k. Current price paid for coal under the contract (i ÷ j).

Response 6. a-k. See attached pages 2 through 7.

EAST KENTUCKY POWER COOPERATIVE, INC.

PSC FUEL ADJUSTMENT CLAUSE CASE NO. 2007-00277

RESPONSE TO PSC ORDER DATED AUGUST 3, 2007

(a) Supplier	(b) Production Facility	(c) Contract Date	(d) Duration of Contract	(e) Revisions or Amendments	(f) Annual Tonnage Required Through 6/07	(g) Actual Annual Tonnage Rec'd Since Inception of Contract Through 6/07	(h) % of Annual Requirements Received	(i) Base Price \$/MMBtu	(j) Total Amt. of Price Escalations to Date	(k) Current Price Paid for Coal (i&j)
Long Term:										
Dale Station Gatliff Coal Co. 200 Allison Blvd. Corbin, KY 40701	Gatliff Coal Co. Bell, KY	09/22/03	9 Yrs. 3 Mos.	Letter 09/25/03 Amendment 1 10/08/03 Letter 01/21/04 Amendment 2 03/22/04 Letter 08/20/04 Amendment 4 10/13/04 Letter 01/14/05 Amendment 5 12/19/06	80,000—2003— 200,000—2004— 240,000—2005— 240,000—2006— 120,000—2007—	47,070.36 213,025.43 241,599.84 223,263.43 131,123.75	59% 107% 101% 93% 109%	\$2.358	\$.02/MMBtu	\$2.378/MMBtu
Trinity Coal Mktg., LLC Suite 100 1051 Main St. Milton, WV 25541	Little Elk Mining Perry, KY	12/20/05	4 Yrs.	---	120,000—2006— 60,000—2007—	113,875.87 66,370.94	95% 111%	\$2.406	\$.018/MMBtu	\$2.424/MMBtu

EAST KENTUCKY POWER COOPERATIVE, INC.

PSC FUEL ADJUSTMENT CLAUSE CASE NO. 2007-00277

RESPONSE TO PSC ORDER DATED AUGUST 3, 2007

(a) Supplier	(b) Production Facility	(c) Contract Date	(d) Duration of Contract	(e) Revisions or Amendments	(f) Annual Tonnage Required Through 6/07	(g) Actual Annual Tonnage Rec'd Since Inception of Contract Through 6/07	(h) % of Annual Requirements Received	(i) Base Price \$/MMBtu	(j) Total Amt. of Price Escalations to Date	(k) Current Price Paid for Coal (i&j)
Cooper Station Gatliff Coal Co. 200 Allison Blvd. Corbin, KY 40701	Gatliff Coal Co. Bell, KY	09/22/03	9 Yrs. 3 Mos.	Letter 09/25/03 Amendment 1 10/08/03 Letter 01/21/04 Amendment 2 03/22/04 Letter 08/20/04 Amendment 4 10/13/04 Letter 01/14/05 Amendment 5 12/19/06	10,000—2003— 138,600—2004—156,307.96 240,000—2005—238,244.76 240,000—2006—230,249.35 120,000—2007—136,202.26	14,950.67 156,307.96 238,244.76 230,249.35 136,202.26	150% 113% 99% 96% 114%	\$2.366	\$.012/MMBtu	\$2.378/MMBtu
Natronal Coal Corp. 8915 George Wms. Rd. Knoxville, TN 37923	National Turley Tippie Campbell, TN	10/06/04	6 Yrs.	Amendment 1 08/25/06	30,000—2004— 120,000—2005—132,042.94 135,000—2006—141,538.17 90,000—2007— 84,832.41	18,414.07 132,042.94 141,538.17 84,832.41	61% 110% 105% 94%	\$2.334	(\$.057/MMBtu)	\$2.277/MMBtu
ICG, LLC 300 Corporate Centre Dr. Scott Depot, WV 25560	Typo Tippie Perry, KY	01/26/06	2 Yrs.	---	110,000—2006— 60,000—2007— 60,304.24	111,012.58 60,304.24	101% 101%	\$2.109	\$.03/MMBtu	\$2.139/MMBtu
Trinity Coal Mktg., LLC Suite 100 1051 Mam St. Milton, WV 25541	Little Elk Mining Perry, KY	08/21/06	6 Yrs.	Letter 10/17/06	30,000—2006— 60,000—2007— 60,471.33	30,190.00 60,471.33	101% 101%	\$1.844	(\$.014/MMBtu)	\$1.83/MMBtu

EAST KENTUCKY POWER COOPERATIVE, INC.

PSC FUEL ADJUSTMENT CLAUSE CASE NO. 2007-00277

RESPONSE TO PSC ORDER DATED AUGUST 3, 2007

(a) Supplier	(b) Production Facility	(c) Contract Date	(d) Duration of Contract	(e) Revisions or Amendments	(f) Annual Tonnage Required Through 6/07	(g) Actual Annual Tonnage Rec'd Since Inception of Contract Through 6/07	(h) % of Annual Requirements Received	(i) Base Price \$/MMBtu	(j) Total Amt. of Price Escalations to Date	(k) Current Price Paid for Coal (i&j)
Spurlock Station Argus Energy, LLC Route 292 Fast Lane Bldg. P. O. Box 190 Lovely, KY 41231 (Formerly Pen Coal)	Kiah Creek Wayne County, WV (Spurlock Station) Beechfork Johnson County, KY (Date Station)	07/12/94	13 ½ Yrs.	Letter 04/14/95 Letter 04/03/96 Amend. 1-11/25/96 Letter 11/29/97 Letter 07/03/97 Amend. 2-11/15/97 Letter 01/19/98 Letter 08/31/98 Letter 06/23/99 Letter 02/28/00 Letter 10/11/00 Amend. 3-10/26/01 Letter 04/09/02 Letter 09/20/02 Letter 10/16/02 Letter 11/13/02 Letter 12/19/02 Amend. 4-12/30/02 Letter 02/20/03 Letter 04/30/03 Letter 05/09/03 Letter 12/01/03 Letter 02/11/04 Letter 03/03/04 Letter 07/20/04 Letter 08/13/04 Letter 09/07/04 Letter 12/06/04 Letter 02/08/05 Letter 02/22/05 Amend. 5-07/22/05 Amend. 6-10/13/05 Letter 12/15/05 Amend. 7-01/30/06 Letter 05/30/06 Letter 06/29/06 Amend. 8-08/25/06 Letter 10/17/06 Letter 02/16/07 Amend. 9-03/19/07 Letter 04/11/07	45,000—1994—46,292.00 78,750—1995—78,806.00 77,200—1996—71,855.00 121,500—1997—127,474.00 330,000—1998—317,831.00 395,000—1999—403,754.00 309,800—2000—301,525.00 41,900—2001—41,900.00 340,000—2002—357,317.10 240,000—2003—213,659.93 670,000—2004—498,304.32 810,000—2005—716,641.00 849,400—2006—829,721.79 300,000—2007—282,888.00	103% 100% 93% 105% 96% 102% 97% 100% 105% 89% 74% 88% 98% 94%	\$1.157 (Spurlock 1) \$1.1771 (Spurlock 2)	\$1.20/MMBtu plus \$.15/ton if tons are met \$1.3599/MMBtu plus \$.15/ton if tons are met	\$2.357/MMBtu plus \$.15/ton if tons are met \$2.537/MMBtu plus \$.15/ton if tons are met	

EAST KENTUCKY POWER COOPERATIVE, INC.

PSC FUEL ADJUSTMENT CLAUSE CASE NO. 2007-00277

RESPONSE TO PSC ORDER DATED AUGUST 3, 2007

(a) Supplier	(b) Production Facility	(c) Contract Date	(d) Duration of Contract	(e) Revisions or Amendments	(f) Annual Tonnage Required Through 6/07	(g) Actual Annual Tonnage Rec'd Since Inception of Contract Through 6/07	(h) % of Annual Requirements Received	(i) Base Price \$/MMBtu	(j) Total Amt. of Price Escalations to Date	(k) Current Price Paid for Coal (i&j)
Spurlock Station (Continued) Appalachian Fuels, LLC 1500 N. Big Run Road Ashland, KY 41101	Bevins Branch & Bent Mountain Pike, KY	12/04/01	8 Yrs.	Letter 01/28/02	345,900—2002—256,877.00	256,877.00	74%	\$1.625	(\$1.14/MMBtu)	\$1.511/MMBtu
				Amendment 1	467,000—2003—200,305.00	200,305.00	43%	(Spurlock 2)	(Spurlock 2)	(Spurlock 2)
				03/01/02	580,000—2004—231,978.00	231,978.00	40%			
				Letter 01/06/03	575,000—2005—427,890.89	427,890.89	74%	\$2.144	(\$.629/MMBtu)	\$1.515/MMBtu
				Letter 01/22/03	254,200—2006—254,437.00	254,437.00	100%	(Spurlock 1)	(Spurlock 1)	(Spurlock 1)
				Letter 02/03/03	216,000—2007— 87,894.95	87,894.95	41%			
				Letter 03/11/03						
				Letter 05/09/03						
				Letter 06/03/03						
				Letter 02/26/04						
				Letter 03/29/04						
				Letter 07/09/04						
				Letter 08/11/04						
Letter 08/30/04										
Letter 11/04/04										
Amendment 2										
06/14/05										
Letter 07/15/05										
Assignment										
08/08/05										
Letter 12/06/05										
Letter 12/16/06										
Letter 02/6/06										
Letter 02/13/06										
Letter 04/05/06										
Letter 04/07/06										
Amendment 3										
05/09/06										
Letter 08/09/06										
Letter 12/05/06										

EAST KENTUCKY POWER COOPERATIVE, INC.

PSC FUEL ADJUSTMENT CLAUSE CASE NO. 2007-00277

RESPONSE TO PSC ORDER DATED AUGUST 3, 2007

(a) Supplier	(b) Production Facility	(c) Contract Date	(d) Duration of Contract	(e) Revisions or Amendments	(f) Annual Tonnage Required Through 6/07	(g) Actual Annual Tonnage Rec'd Since Inception of Contract Through 6/07	(h) % of Annual Requirements Received	(i) Base Price \$/MMBtu	(j) Total Amt. of Price Escalations to Date	(k) Current Price Paid for Coal (i&j)		
Spurlock Station (Continued) Keystone Industries, LLC Suite 401 1375 Jackson Street Fort Myers, FL 33901	Keystone Industries Kanawha, WV	10/16/01	7 ½ Yrs.	Amendment 1 02/08/02	99,000—2002—100,267.00	126,038—2003—119,120.00	101%	\$1.5417	\$1.1663/MMBtu plus \$.56/ton	\$1.708/MMBtu plus \$.56/ton		
				Amendment 2 10/08/02	27,000—2004—32,680.00	144,000—2005—108,819.00	121%					
				Letter 05/09/03	66,400—2006—41,779.00	121,000—2007—108,004.00	76%					
				Letter 06/11/03			63%					
				Letter 07/24/03			89%					
M. C. Mining, LLC 1717 S. Boulder Avenue Tulsa, OK 74119	Scotts Branch Pike, KY	01/01/05	3 Yrs.	Letter 01/27/04	64,402—2005—78,078.20	230,000—2006—214,669.20	121%	\$2.520	(\$1.44/MMBtu)	\$2.08/MMBtu		
				Amendment 3 07/13/04	230,000—2006—214,669.20	120,000—2007—159,682.90	93%					
				Letter 03/17/06			133%					
				Amendment 4 03/28/06								
				Letter 10/16/06								
Infinity Coal Sales, LLC Suite 106 3315 Springbank Lane Charlotte, NC 28226	Remington Kanawha, WV	08/09/05	2 Yrs.	Letter 04/17/06	240,000—2006—239,155.00	240,000—2007—110,614.00	100%	\$2.354	---	\$2.354/MMBtu plus \$.56/ton		
			7 Mos.	Letter 02/16/07				92%				

EAST KENTUCKY POWER COOPERATIVE, INC.

PSC FUEL ADJUSTMENT CLAUSE CASE NO. 2007-00277

RESPONSE TO PSC ORDER DATED AUGUST 3, 2007

(a) Supplier	(b) Production Facility	(c) Contract Date	(d) Duration of Contract	(e) Revisions or Amendments	(f) Annual Tonnage Required Through 6/07	(g) Actual Annual Tonnage Rec'd Since Inception of Contract Through 6/07	(h) % of Annual Requirements Received	(i) Base Price \$/MMBtu	(j) Total Amt. of Price Escalations to Date	(k) Current Price Paid for Coal (f&j)
Spurlock Station (Continued)										
Oxford Mining Co. 544 Chestnut Street P. O. Box 427 Coshocton, OH 43812	Daron-Liggett Harrison, OH Barnesville Belmont, OH	11/09/04	10 Yrs.	Letter 08/29/05 Letter 02/16/07 Letter 03/28/07	160,000—2005— 240,000—2006— 120,000—2007—	115,625.00 276,719.00 120,995.00	72% 116% 101%	\$1.0965	\$.0325/MMBtu	\$1.129/MMBtu
B & N Coal Co., Inc. P. O. Box 100 Dexter City, OH 45727	Whigville, West Fork, & Ullman Noble, OH	01/10/05	5 Yrs.	Letter 08/29/05 Letter 02/16/07 Letter 03/28/07	80,000—2005— 137,000—2006— 60,000—2007—	58,838.00 182,252.00 58,237.00	73% 133% 97%	\$0.9840	\$.2455/MMBtu	\$1.2295/MMBtu plus \$.162/ton
Massey Coal Sales Co. 4 North Street Richmond, VA 23219	Nicholas Energy Uneeda, WV Black Castle Mining Boone, WV	07/12/06	5 Yrs.	Letter 09/27/06 Letter 02/16/07	56,000—2006— 69,000—2007—	54,767.00 89,012.00	98% 129%	\$0.9491	---	\$0.9491/MMBtu
B & N Coal Co., Inc. P. O. Box 100 Dexter City, OH 45727	Whigville, West Fork, & Ullman Noble, OH	07/11/06	5 Yrs.	Letter 09/27/06 Letter 02/16/07 Letter 03/28/07	56,000—2006— 69,000—2007—	51,520.00 55,418.00	92% 80%	\$1.00	\$.062/MMBtu	\$1.062/MMBtu plus \$.162/ton

EAST KENTUCKY POWER COOPERATIVE, INC

PSC CASE NO. 2007-00277

FUEL ADJUSTMENT CLAUSE

INFORMATION REQUEST RESPONSE

COMMISSION STAFF'S INFORMATION REQUEST DATED 08/03/07

REQUEST 7

RESPONSIBLE PARTY: Gerard B. Bordes

Request 7. a. Does East Kentucky regularly compare the price of its coal purchases with those paid by other electric utilities?

b. If yes, state:

(1) How East Kentucky's prices compare with those of other utilities for the review period.

(2) The utilities that are included in this comparison and their location.

Response 7. a. Each month East Kentucky compares the price of its coal purchases on a delivered basis against the price that 20 other utilities within our region are paying for coal.

b. The most recent data available for comparison is for April 2007. East Kentucky ranked 14th on a delivered basis for April 2007.

Year/Month	Name	Delivered Fuel Price Cents/MMBtu	Quantity (000s tons)
2007-04	Hoosier Energy REC	125.50	371
2007-04	Louisville Gas & Electric	154.58	792
2007-04	Columbus Southern Power	168.13	390
2007-04	Allegheny Energy Supply	172.16	234

Year/Month	Name	Delivered Fuel Price Cents/MMBtu	Quantity (000s tons)
2007-04	Southern Indiana Gas & Elec	173.19	218
2007-04	Duke Energy Ohio	173.72	647
2007-04	Tennessee Valley Authority	184.58	3,453
2007-04	Appalachian Power	187.20	1,485
2007-04	Dayton Power & Light	191.73	765
2007-04	Kentucky Power	193.68	257
2007-04	Consumers Energy	201.11	759
2007-04	Kentucky Utilities	215.22	809
2007-04	Virginia Electric & Power	220.46	993
2007-04	East Kentucky Power Coop	224.33	289
2007-04	South Carolina Generating	236.63	121
2007-04	S. Carolina Electric & Gas	245.57	406
2007-04	Georgia Power	259.81	3,373
2007-04	Duke Energy Carolinas	266.22	825
2007-04	Progress Energy Carolinas	297.68	964
2007-04	S. Mississippi Electric Power	298.68	123

EAST KENTUCKY POWER COOPERATIVE, INC

PSC CASE NO. 2007-00277
FUEL ADJUSTMENT CLAUSE
INFORMATION REQUEST RESPONSE

COMMISSION STAFF'S INFORMATION REQUEST DATED 08/03/07
REQUEST 8

RESPONSIBLE PARTY: Gerard B. Bordes

Request 8. State the percentage of East Kentucky's coal, as of the date of this Order, that is delivered by:

- a. rail.
- b. truck.
- c. barge.

Response 8.

- a. rail = 14%
- b truck = 28%
- c. barge = 58%

EAST KENTUCKY POWER COOPERATIVE, INC

PSC CASE NO. 2007-00277
FUEL ADJUSTMENT CLAUSE
INFORMATION REQUEST RESPONSE

COMMISSION STAFF'S INFORMATION REQUEST DATED 08/03/07

REQUEST 9

RESPONSIBLE PARTY: Gerard B. Bordes

Request 9. a. State East Kentucky's coal inventory level in tons and in number of days' supply as of April 30, 2007.

b. Describe the criteria used to determine number of days' supply.

c. Compare East Kentucky's coal inventory as of April 30, 2007 to its inventory target for that date.

d. If actual coal inventory exceeds inventory target by 10 days' supply, state the reasons for excessive inventory.

e. (1) Does East Kentucky expect any significant changes in its current coal inventory target within the next 12 months?

(2) If yes, state the expected change and the reasons for this change.

Response 9. a. East Kentucky's coal inventory level as of April 30, 2007, was 697,193 tons—37 days' supply.

b. Actual tons in inventory divided by the total maximum daily usage for East Kentucky's generating units.

c. East Kentucky's coal inventory as of April 30, 2007, was two days above its target of 35 days' supply.

d. Actual coal inventory does not exceed inventory target by 10 days' supply.

e (1-2). East Kentucky does not expect significant changes in its current coal inventory tonnage level.

EAST KENTUCKY POWER COOPERATIVE, INC

**PSC CASE NO. 2007-00277
FUEL ADJUSTMENT CLAUSE
INFORMATION REQUEST RESPONSE**

COMMISSION STAFF'S INFORMATION REQUEST DATED 08/03/07

REQUEST 10

RESPONSIBLE PARTY: Gerard B. Bordes

Request 10. a. Has East Kentucky audited any of its coal contracts during the period from November 1, 2006 through April 30, 2007?

b. If yes, for each audited contract:

(1) Identify the contract.

(2) Identify the auditor.

(3) State the results of the audit.

(4) Describe the actions that East Kentucky took as a result of the audit.

Response 10. a. East Kentucky has not audited any of its coal contracts during the period under review.

EAST KENTUCKY POWER COOPERATIVE, INC

PSC CASE NO. 2007-00277

FUEL ADJUSTMENT CLAUSE

INFORMATION REQUEST RESPONSE

COMMISSION STAFF'S INFORMATION REQUEST DATED 08/03/07

REQUEST 11

RESPONSIBLE PARTY: Ann F. Wood

Request 11. a. Has East Kentucky received any customer complaints regarding its FAC during the period from November 1, 2006 through April 30, 2007?

b. If yes, for each complaint, state:

(1) The nature of the complaint.

(2) East Kentucky's response.

Response 11. a-b. East Kentucky has received no customer complaints regarding its FAC during the period from November 1, 2006 through April 30, 2007.

EAST KENTUCKY POWER COOPERATIVE, INC

PSC CASE NO. 2007-00277

FUEL ADJUSTMENT CLAUSE

INFORMATION REQUEST RESPONSE

COMMISSION STAFF'S INFORMATION REQUEST DATED 08/03/07

REQUEST 12

RESPONSIBLE PARTY: Gerard B. Bordes

- Request 12.**
- a. Is East Kentucky currently involved in any litigation with its current or former coal suppliers?
 - b. If yes, for each litigation:
 - (1) Identify the coal supplier.
 - (2) Identify the coal contract involved.
 - (3) State the potential liability or recovery to East Kentucky.
 - (4) List the issues presented.
 - (5) Provide a copy of the complaint or other legal pleading that initiated the litigation and any answer(s) or counterclaim(s). If a copy has previously been filed with the Commission, provide the date on which it was filed and the case in which it was filed.
 - c. State the current status of all litigation with coal suppliers.

Response 12.

a. No, East Kentucky is not involved in any litigation with a current or former coal supplier. East Kentucky did, however, have a contract with Horizon Natural Resources for its Cooper Power Station terminated through the bankruptcy court in April 2004. East Kentucky has resolved its claim against the

bonding company, which partially secured performance of that Horizon Natural Resources contract and is awaiting any pay-out on its proof of claim in U. S. Bankruptcy Court.

EAST KENTUCKY POWER COOPERATIVE, INC

**PSC CASE NO. 2007-00277
FUEL ADJUSTMENT CLAUSE
INFORMATION REQUEST RESPONSE**

**COMMISSION STAFF'S INFORMATION REQUEST DATED 08/03/07
REQUEST 13**

RESPONSIBLE PARTY: Gerard B. Bordes

Request 13. a. During the period from November 1, 2006 through April 30, 2007, have there been any changes to East Kentucky's written policies and procedures regarding its fuel procurement?

b. If yes:

- (1) Describe the changes.
- (2) Provide these written policies and procedures as changed.
- (3) State the date the changes were made.
- (4) Explain why the changes were made.

Response 13. a-b. No, East Kentucky has not made any changes to its written policies and procedures regarding fuel procurement.

EAST KENTUCKY POWER COOPERATIVE, INC

PSC CASE NO. 2007-00277
FUEL ADJUSTMENT CLAUSE
INFORMATION REQUEST RESPONSE

COMMISSION STAFF'S INFORMATION REQUEST DATED 08/03/07
REQUEST 14

RESPONSIBLE PARTY: Gerard B. Bordes

Request 14. a. Is East Kentucky aware of any violations of its policies and procedures regarding fuel procurement that occurred prior to or during the period from November 1, 2006 through April 30, 2007?

b. If yes, for each violation:

(1) Describe the violation.

(2) Describe the action(s) that East Kentucky took upon discovering the violation.

(3) Identify the person(s) who committed the violation.

Response 14. a. No, East Kentucky is not aware of any violations of its policies and procedures regarding fuel procurement.

EAST KENTUCKY POWER COOPERATIVE, INC

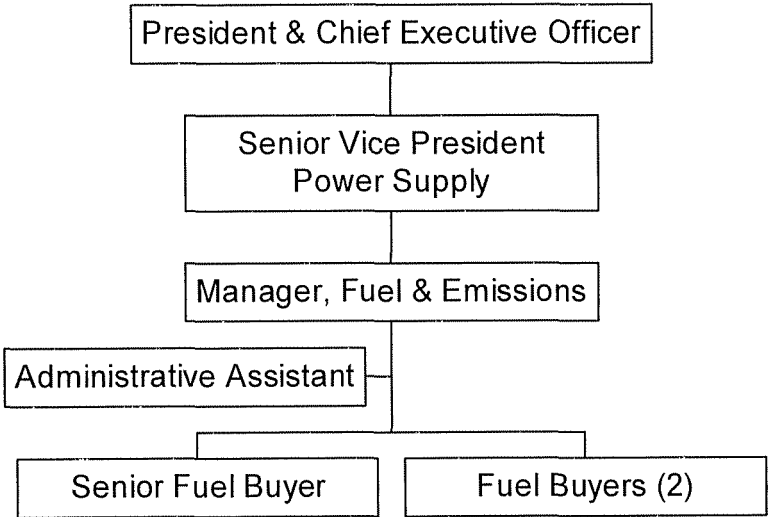
**PSC CASE NO. 2007-00277
FUEL ADJUSTMENT CLAUSE
INFORMATION REQUEST RESPONSE**

**COMMISSION STAFF'S INFORMATION REQUEST DATED 08/03/07
REQUEST 15**

RESPONSIBLE PARTY: Gerard B. Bordes

Request 15. Identify and explain the reasons for all changes that occurred during the period from November 1, 2006 through April 30, 2007 in the organizational structure and personnel of the departments or divisions that are responsible for East Kentucky's fuel procurement activities.

Response 15. As part of a company-wide reorganization on February 8, 2007, the fuel department was moved from the power production division to the new power supply division. The new organizational chart is below.



EAST KENTUCKY POWER COOPERATIVE, INC

**PSC CASE NO. 2007-00277
FUEL ADJUSTMENT CLAUSE
INFORMATION REQUEST RESPONSE**

**COMMISSION STAFF'S INFORMATION REQUEST DATED 08/03/07
REQUEST 16**

RESPONSIBLE PARTY: Gerard B. Bordes

Request 16. a. Identify all changes that East Kentucky has made during the period under review to its maintenance and operation practices that also affect fuel usage at East Kentucky's generation facilities.

b. Describe the impact of these changes on East Kentucky's fuel usage.

Response 16. During the period under review, East Kentucky did not make any changes to its maintenance and operational practices, which affected fuel usage at East Kentucky's generation facilities.

EAST KENTUCKY POWER COOPERATIVE, INC

PSC CASE NO. 2007-00277
FUEL ADJUSTMENT CLAUSE
INFORMATION REQUEST RESPONSE

COMMISSION STAFF'S INFORMATION REQUEST DATED 08/03/07
REQUEST 17

RESPONSIBLE PARTY: Gerard B. Bordes

Request 17. List each written coal supply solicitation issued during the period from November 1, 2006 to April 30, 2007.

a. For each solicitation, provide the date of the solicitation, the type of solicitation (contract or spot), the quantities solicited, a general description of the quality of coal solicited, the time period over which deliveries were requested, and the generating unit(s) for which the coal was intended.

b. For each solicitation, state the number of vendors to whom the solicitation was sent, the number of vendors who responded, and the selected vendor. Provide the bid tabulation sheet or corresponding document that ranked the proposals. (This document should identify all vendors who made offers.) State the reasons for each selection.

Response 17. a-b. See attached pages 2 through 11.

EAST KENTUCKY POWER COOPERATIVE, INC.

PSC FUEL ADJUSTMENT CLAUSE CASE NO. 2007-00277

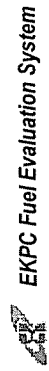
RESPONSE TO PSC ORDER DATED AUGUST 3, 2007

Unit	Date	Contract/Spot	Quantity (Tons)	Quality	Time Period	Number of Vendors Sent	Number of Vendors Respond	Tabulation Sheet
Spurlock #1	11/27/06	Spot	90,000	3# SO ₂ /MMBtu <14% Ash 11,000 Btu	07/01/07—12/31/07	85	15	Pages 3-6
Spurlock #2	11/27/06	Contract	2,160,000	7# SO ₂ /MMBtu <16% Ash >11,000 Btu	10/01/08—09/30/11	89	19	Pending Approval of EKPC Board
Spurlock #2	01/25/07	Spot	60,000	1.15# SO ₂ /MMBtu <16% Ash >11,000 Btu	03/01/07—04/30/07	76	7	Page 7
Gilbert	03/06/07	Contract	450,000	9.75# SO ₂ /MMBtu <30% Ash >9,000 Btu	10/01/07—03/31/10	93	10	Pages 8-9
Gilbert	04/12/07	Spot	180,000	9.75# SO ₂ /MMBtu <30% Ash >9,000 Btu	07/01/07—12/31/07	93	10	Pages 10-11

FUEL EVALUATION FOR SPURLOCK UNIT NO. 1
1ST QUARTER 2007

Date: 12/21/2006
Event Nbr: 78
Bid End Date: 12/20/2006

Coal Supplier	Number	Quality Btu		Tons	Term	Delivery Cost		Evaluated Cost		Reason for Recommendation
		% Sulfur	% Ash			\$	MMBtu	\$	MMBtu	
Progress Fuels Various Monthly/Non-Union /Broker	12	11,500	1.00	40,000	3	41.800	1.817	53.813	2.340	This coal purchased was the lowest evaluated cost available to meet our tonnage requirements.
		14.00						<i>Recommended</i>		
Foundation Energy Sales Kanawha Monthly/Non-Union /Producer	4	11,500	0.80	10,000	3			55.125	2.397	
Koch Carbon Various Monthly/Non-Union /Broker	7	11,250	0.85	15,500	3			54.228	2.410	
SSM Coal America Boyd Weekly /Non-Union /Broker	13	12,000	1.05	15,500	3			58.489	2.437	
Koch Carbon Various Monthly/Non-Union /Broker	8	12,500	1.00	20,000	3			61.752	2.470	
Black Gold Kanawha Monthly/Non-Union /Broker	3	12,000	0.98	15,000	3			62.272	2.595	
			14.00							



FUEL EVALUATION FOR SPURLOCK UNIT NO. 1

THIRD & FOURTH QUARTER 2007

Date: 12/21/2006
Event Nbr: 77
Bid End Date: 12/15/2006

Coal Supplier	Number	Quality Btu		Tons	Term	Delivery Cost		Evaluated Cost		Reason for Recommendation
		% Sulfur	% Ash			\$ / Ton	MMBtu	\$ / Ton	MMBtu	
Koch Carbon Various Monthly/Non-Union /Broker	7	11,250	0.85	15,500	6			60.317	2.681	
SSM Coal America Boyd Weekly /Non-Union /Broker	15	12,000	1.05	15,500	3			64.954	2.706	3rd quarter
Foundation Energy Sales Kanawha Monthly/Non-Union /Producer	4	11,500	0.85	10,000	6			62.349	2.711	
Koch Carbon Various Monthly/Non-Union /Broker	8	12,500	1.00	20,000	11			68.092	2.724	
SSM Coal America Boyd Weekly /Non-Union /Broker	16	12,000	1.05	15,500	3			65.708	2.738	4th quarter
Black Gold Kanawha Monthly/Non-Union /Broker	3	12,000	0.98	15,000	12			67.266	2.803	
Arch Coal Sales Logan Monthly/Non-Union /Producer	1	12,000	0.71	16,500	6			67.356	2.806	
Magnum Coal Sales Kanawha Monthly/Non-Union /Producer	9	12,200	0.91	15,000	6			70.879	2.905	



FUEL EVALUATION FOR SPURLOCK UNIT NO. 1
THIRD & FOURTH QUARTER 2007

Date: 12/21/2006
Event Nbr: 77
Bid End Date: 12/15/2006

Coal Supplier	Number	Quality Btu			Tons	Term	Delivery Cost		Evaluated Cost		Reason for Recommendation
		% Sulfur	% Ash	MMBtu			\$	Ton	\$	MMBtu	
Global Materials Kanawha Monthly/Non-Union /Producer	5	12,000	1.20	14.00	15,000	6			70.254	2.927	
Pike Letcher Synfuel Pike Monthly/Non-Union /Producer	18	12,500	1.70	9.00	15,000	6			74.236	2.969	
Miller Brothers Breathitt Weekly /Non-Union /Producer	10	11,200	1.30	14.00	15,000	6			66.692	2.977	
James River Coal Perry Weekly /Non-Union /Producer	20	12,500	1.20	11.00	15,000	6			75.509	3.020	
James River Coal Pike Weekly /Non-Union /Producer	19	12,500	1.60	11.00	15,000	6			77.858	3.114	
ICG LLC Perry Monthly/Non-Union /Producer	6	11,800	1.80	14.00	18,000	6			76.026	3.221	
American Coal Saline Monthly/Non-Union /Producer	2	12,000	1.50	8.50	15,000	6			78.896	3.287	
CoalTec Calvert City Marshall Monthly/Non-Union /Producer	17	11,000	0.40	6.00	4,500	6			72.582	3.299	



Date: 12/21/2006
Event Nbr: 77
Bid End Date: 12/15/2006

FUEL EVALUATION FOR SPURLOCK UNIT NO. 1
THIRD & FOURTH QUARTER 2007

Coal Supplier	Number	Quality Btu			Delivery Cost		Evaluated Cost		Reason for Recommendation	
		% Sulfur	% Ash	Tons	Term	\$ Ton	MMBtu	\$ Ton		MMBtu
Oxford Mining Belmont Weekly /Non-Union /Producer	11	11,300	1.73	5,000	6			74,908	3,315	

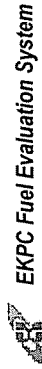


FUEL EVALUATION FOR SPURLOCK POWER STATION UNIT NO. 2

MARCH & APRIL 2007

Date: 02/13/2007
Event Nbr: 82
Bid End Date: 02/07/2007

Coal Supplier	Number	Quality Btu			Term	Delivery Cost		Evaluated Cost		Reason for Recommendation
		% Sulfur	% Ash	Tons		\$ / Ton	MMBtu	\$ / Ton	MMBtu	
Progress Fuels Various Monthly/Non-Union /Broker	3	12,000	0.71	30,000	2	45.775	1.907	54.519	2.272	This coal purchased was the lowest evaluated cost available to meet our tonnage requirements.
		12.00						<i>Recommended</i>		
Foundation Energy Sales Kanawha Monthly/Non-Union /Producer	4	12,800	0.75	15,000	2			59.765	2.335	
Amvest Coal Sales Nicholas Monthly/Non-Union /Producer	1	12,300	0.73	30,000	2			58.725	2.387	
SSM Coal America Boyd Monthly/Non-Union /Broker	6	12,500	0.74	30,000	2			60.637	2.425	
Teco Coal Corp Perry Monthly/Non-Union /Producer	7	12,800	0.75	30,000	2			63.246	2.471	
Magnum Coal Sales Kanawha Monthly/Non-Union /Producer	5	12,500	0.77	30,000	2			64.079	2.563	
M. C. Mining Pike Monthly/Non-Union /Producer	2	12,500	0.74	20,000	1			68.333	2.733	
		10.00								



FUEL EVALUATION FOR GILBERT UNIT NO. 3

B & N CONTRACT REOPENER

Date: 05/31/2007
Event Nbr: 86
Bid End Date: 04/06/2007

Coal Supplier	Number	Quality Btu			Term	Delivery Cost		Evaluated Cost		Reason for Recommendation
		% Sulfur	Tons	% Ash		\$ / Ton	MMBtu	\$ / Ton	MMBtu	
ION Carbon & Miner Pike Monthly/Non-Union /Broker	7	8,500	15,000	2.50	24			23.372	1.375	
Massey Utility Boone Monthly/Non-Union /Producer	9	10,800 5.25 25.00	7,500	15.00	30	26.939	1.247	31.478	1.457	This coal does not meet our current quality specifications. This coal purchased was the lowest evaluated cost available to meet our quality and tonnage requirements.
Phoenix Coal Corp Muhlenberg Monthly/Non-Union /Producer	10	10,600 4.89 18.00	30,000		30			33.246	1.568	
James River Coal Pike Monthly/Non-Union /Producer	8	9,500 4.00 17.00	15,000		39			31.046	1.634	
Coalsales LLC Webster Monthly/Non-Union /Producer	5	9,600 3.74 26.00	15,000		30			34.818	1.813	
Etta-Mae Inc Lawrence Monthly/Non-Union /Producer	6	11,200 3.60 12.00	5,000		15			40.938	1.828	
Waterloo Coal Jackson Weekly /Non-Union /Producer	11	10,250 5.12 22.00	15,000		36			38.299	1.868	



FUEL EVALUATION FOR GILBERT UNIT NO. 3

B & N CONTRACT REOPENER

Date: 05/31/2007
Event Nbr: 86
Bid End Date: 04/06/2007

Coal Supplier	Number	Quality Btu			Term	Delivery Cost		Evaluated Cost		Reason for Recommendation
		% Sulfur	% Ash	Tons		\$ Ton	MMBtu	\$ Ton	MMBtu	
American Coal Belmont Monthly/Union	3 OH /Producer	12,500 4.70 10.50	15,000	30			48.136	1.925		
American Coal Saline Monthly/Non-Union	2 IL /Producer	11,800 2.66 9.00	15,000	30			50.240	2.129		
American Coal & Mi Harrison Monthly/Non-Union	1 OH /Broker	12,500 2.88 8.00	15,000	29			53.744	2.150		
Arch Coal Sales Logan Monthly/Non-Union	4 WV /Producer	12,500 0.96 12.00	15,000	12			58.987	2.359		



FUEL EVALUATION FOR GILBERT

3RD & 4TH QUARTERS 2007

Date: 05/31/2007
Event Nbr: 87
Bid End Date: 05/04/2007

Coal Supplier	Number	Quality Btu			Term	Delivery Cost \$ Ton MMBtu	Evaluated Cost \$ Ton MMBtu	Reason for Recommendation
		% Sulfur	% Ash	Tons				
ION Carbon & Miner Pike Monthly/Non-Union /Broker	3	8,500 2.50 15.00	30,000	24		23.338 1.373 <i>Not Recommended</i>	This coal does not meet our current quality specification.	
James River Coal Pike Monthly/Non-Union /Producer	4	9,700 4.60 17.00	25,000	6	24,932 1.285	28.354 1.462 <i>Recommended</i>	This coal purchased was the lowest evaluated cost available to meet our specification requirements.	
Phoenix Coal Corp Muhlenberg Weekly /Non-Union /Producer	7	10,600 4.89 18.00	30,000	6		32.676 1.541		
Oxford Mining Belmont Weekly /Non-Union /Producer	6	10,900 5.45 18.00	10,000	6		34.603 1.587		
Coalsales LLC Webster Monthly/Non-Union /Producer	8	9,600 3.74 26.00	30,000	6		31.719 1.652		
Black Gold Belmont Monthly/Non-Union /Broker	1	9,500 4.00 30.00	10,000	6		32.013 1.685		
Waterloo Coal Jackson Weekly /Non-Union /Producer	12	10,250 5.12 22.00	12,000	6		35.014 1.708		

FUEL EVALUATION FOR GILBERT

3RD & 4TH QUARTERS 2007

Date: 05/31/2007
Event Nbr: 87
Bid End Date: 05/04/2007

Coal Supplier	Number	Quality Btu			Delivery Cost		Evaluated Cost		Reason for Recommendation
		% Sulfur	% Ash	Tons	Term	\$ Ton	\$ MMBtu	\$ Ton	
American Coal Belmont Monthly/Union	5	12,500 4.70 10.50		30,000	6			43.816 1.753	
Etta-Mae Inc Lawrence Monthly/Non-Union /Producer	2	11,200 3.60 12.00		5,000	6			39.610 1.768	
Tri-Star Coal Sales Harrison Monthly/Non-Union /Broker	11	10,000 4.36 25.00		13,000	6			39.717 1.986	
Tri-Star Coal Sales Harrison Monthly/Non-Union /Broker	10	9,500 4.14 27.00		13,000	6			38.413 2.022	
Tri-Star Coal Sales Harrison Monthly/Non-Union /Broker	9	9,100 3.97 30.00		10,000	6			37.163 2.042	



EAST KENTUCKY POWER COOPERATIVE, INC

PSC CASE NO. 2007-00277
FUEL ADJUSTMENT CLAUSE
INFORMATION REQUEST RESPONSE

COMMISSION STAFF'S INFORMATION REQUEST DATED 08/03/07
REQUEST 18

RESPONSIBLE PARTY: Gerard B. Bordes

Request 18. List each oral coal supply solicitation issued during the period from November 1, 2006 to April 30, 2007.

a. For each solicitation, state why the solicitation was not written, the date(s) of the solicitation, the quantities solicited, a general description of the quality of coal solicited, the time period over which deliveries were requested, and the generating unit(s) for which the coal was intended.

b. For each solicitation, identify all vendors solicited and the vendor selected. Provide the tabulation sheet or other document that ranks the proposals. (This document should identify all vendors who made offers.) State the reasons for each selection.

Response 18. a-b. See attached pages 2 through 10.

EAST KENTUCKY POWER COOPERATIVE, INC.

PSC FUEL ADJUSTMENT CLAUSE CASE NO. 2007-00277

RESPONSE TO PSC ORDER DATED AUGUST 3, 2007

Unit	Date	Reason	Quantity (Tons)	Quality	Time Period	Number of Vendors Contacted	Tabulation Sheet
Spurlock 2	09/22/06	Immediate Response Required	240,000	1.15# SO ₂ /MMBtu <14% Ash >11,000 Btu	01/01/07—12/31/08	7	Page 3
Spurlock 2	11/15/06	Immediate Response Required	40,000	1.15# SO ₂ /MMBtu <14% Ash >11,000 Btu	11/20/06—12/31/06	8	Pages 4-5
Spurlock 1	01/19/07	Immediate Response Required	1,700	3# SO ₂ /MMBtu <14% Ash >11,000 Btu	01/15/07—01/31/07	1	Economy Purchase No Tabulation
Spurlock 2	1/30/07	Immediate Response Required	20,000	1.15# SO ₂ /MMBtu <14% Ash >11,000 Btu	02/01/07—02/28/07	9	Pages 6-7
Spurlock 2	01/30/07	Immediate Response Required	40,000	1.15# SO ₂ /MMBtu <14% Ash >11,000 Btu	05/01/07—05/31/07	7	Page 8
Spurlock 1	04/20/07	Immediate Response Required	235,000	3# SO ₂ /MMBtu <15% Ash >11,000 Btu	07/01/07—12/31/07	13	Pages 9-10

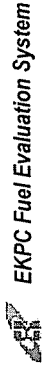
NOTE: All coal purchased is based on the lowest evaluated cost. Any deviations from this practice such as quality concerns, delivery commitments, diversity of suppliers, etc., are detailed on approval attachments. A portion of spot coal requirements at Dale, Cooper, and Spurlock Power Stations are purchased through a "run-of-mine" program that typically purchases coal from small operators that do not have processing facilities. Approximately 5,000 tons per month may be purchased for Dale Power Station; 10,000 tons per month for Cooper Power Station; and 20,000 to 30,000 tons per month for Spurlock Power Station at prices competitive with prices paid for coal at the respective power plants. These purchases are not reflected in the above quantities since the coal is purchased at varying quantities and qualities and blended to meet respective plant specifications.

FUEL EVALUATION FOR SPURLOCK POWER STATION UNIT NO. 2

COALS SALES AGREEMENT

Date: 09/12/2006
Event Nbr: 75
Bid End Date: 04/12/2006

Coal Supplier	Number	Quality Btu			Term	Delivery Cost		Evaluated Cost		Reason for Recommendation
		% Sulfur	% Ash	Tons		\$ Ton	MMBtu	\$ Ton	MMBtu	
Coalsales, LLC Oakland Monthly/Non-Union /Producer	4	10,800	0.55	20,000	24	58,540	2,710	70,503	3,264	This coal purchased was the lowest evaluated cost available to meet our tonnage requirements.
Coaltrade LLC Boone Monthly/Non-Union /Producer	2	12,500	0.74	20,000	24			85,294	3,412	
M. C. Mining Pike Monthly/Non-Union /Producer	5	12,500	0.77	12,500	24			86,310	3,452	
Magnum Coal Sales Kanawha Weekly /Non-Union /Producer	1	12,100	0.71	20,000	24			84,901	3,508	
Arch Coal Sales Logan Monthly/Non-Union /Producer	3	12,000	0.74	20,000	24			85,107	3,546	
Central Appalachian Pike Monthly/Non-Union /Producer	6	12,500	0.77	20,000	24			89,060	3,562	
Massey Utility Boone Monthly/Non-Union /Producer	7								No Coal Available	

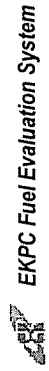


SPOT COAL PURCHASE

SPURLOCK UNIT NO. 2

Date: 11/15/2006
Event Nbr: 76
Bid End Date: 11/15/2006

Coal Supplier	Number	Quality Btu		Tons	Term	Delivery Cost		Evaluated Cost		Reason for Recommendation
		% Sulfur	% Ash			\$ / Ton	MMBtu	\$ / Ton	MMBtu	
Progress Fuels Various Monthly/Non-Union /Broker	1	12,000	0.71	10,000	1	44,902	1.871	54,815	2.284	This coal purchased was the lowest evaluated cost available to meet our tonnage requirements.
Progress Fuels Various Monthly/Non-Union /Broker	2	12,000	0.71	10,000	1	47,306	1.971	57,219	2.384	This coal purchased was the lowest evaluated cost available to meet our tonnage requirements.
SSM Coal America Wayne Monthly/Non-Union /Broker	3	12,000	0.71	20,000	1	47,402	1.975	57,315	2.388	This coal purchased was the lowest evaluated cost available to meet our tonnage requirements.
Koch Carbon Various Monthly/Non-Union /Broker	8	12,000	0.71	20,000	1			59,033	2.460	
Magnum Coal Sales Kanawha Weekly /Non-Union /Producer	7	12,400	0.73	20,000	1			63,958	2.579	
Arch Coal Sales Campbell Monthly/Non-Union /Producer	4	12,000	0.71	20,000	1			65,043	2.710	
Patrick Processing Pike Weekly /Non-Union /Producer	6	12,000	0.71	20,000	1			65,285	2.720	
Peabody Coalsales Boone Monthly/Non-Union /Broker	5	12,500	0.74	20,000	1			68,975	2.759	



SPOT COAL PURCHASE

SPURLOCK UNIT NO. 2

Date: 11/15/2006
Event Nbr: 76
Bid End Date: 11/15/2006

Coal Supplier	Number	Quality Btu			Delivery Cost		Evaluated Cost		Reason for Recommendation
		% Sulfur	% Ash	Tons	Term	\$ Ton	MMBtu	\$ Ton	
Central Appalachian Pike Monthly/Non-Union /Producer	9								No Coal Available



FUEL EVALUATION FOR SPURLOCK POWER STATION UNIT NO. 2

FEBRUARY 2007 VERBAL PROPOSAL

Date: 01/30/2007
Event Nbr: 79
Bid End Date: 01/26/2007

Coal Supplier	Quality Btu			Tons	Term	Delivery Cost		Evaluated Cost		Reason for Recommendation
	Number	% Sulfur	% Ash			\$	Ton	\$	Ton	
Progress Fuels Various Monthly/Non-Union /Broker	8	12,000 0.71 12.00	20,000	1	44.780	1.866	53.453	2.227	<i>Recommended</i>	This coal purchased was the lowest evaluated cost available to meet our tonnage requirements.
SSM Coal America Wayne Monthly/Non-Union /Broker	6	12,500 0.74 12.00	20,000	1	58.133	2.325	60.690	2.371		
Foundation Energy Sales Kanawha Monthly/Non-Union /Producer	1	12,800 0.75 9.00	20,000	1	54.664	2.377	59.829	2.393		
Koch Carbon Various Monthly/Non-Union /Broker	7	11,500 0.68 15.00	20,000	1	53.663	2.439	63.677	2.547		
Koch Carbon Various Monthly/Non-Union /Broker	9	12,500 0.74 10.00	20,000	1	61.770	2.574				
Arch Coal Sales Boyd Monthly/Non-Union /Producer	4	11,000 0.65 16.00	20,000	1						
Teco Coal Corp Perry Monthly/Non-Union /Producer	5	12,500 0.74 9.00	20,000	1						
Coaltrade LLC Boone Monthly/Non-Union /Producer	3	12,000 0.71 14.00	20,000	1						



FUEL EVALUATION FOR SPURLOCK POWER STATION UNIT NO. 2

FEBRUARY 2007 VERBAL PROPOSAL

Date: 01/30/2007
Event Nbr: 79
Bid End Date: 01/26/2007

Coal Supplier	Number	Quality Btu		Tons	Term	Delivery Cost		Evaluated Cost		Reason for Recommendation
		% Sulfur	% Ash			\$ Ton	\$ MMBtu	\$ Ton	\$ MMBtu	
Alliance Coal Pike KY Monthly/Non-Union /Producer	10	12,500	0.74	20,000	1			70.829	2.833	
Coalsales, LLC Oakland IN Monthly/Non-Union /Producer	2	10,800	0.61	20,000	1			64.762	2.998	



FUEL EVALUATION FOR SPURLOCK POWER STATION UNIT NO. 2

MARCH & APRIL 2007

Date: 02/13/2007
Event Nbr: 82
Bid End Date: 02/07/2007

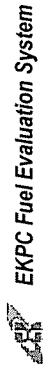
Coal Supplier	Quality Btu			Tons	Term	Delivery Cost		Evaluated Cost		Reason for Recommendation
	Number	% Sulfur	% Ash			\$	MMBtu	\$	MMBtu	
Progress Fuels Various Monthly/Non-Union /Broker WV	3	12,000 0.71 12.00		30,000	2	45.775	1.907	54.519	2.272	This coal purchased was the lowest evaluated cost available to meet our tonnage requirements.
Foundation Energy Sales Kanawha Monthly/Non-Union /Producer WV	4	12,800 0.75 9.00		15,000	2			59.765	2.335	
Amvest Coal Sales Nicholas Monthly/Non-Union /Producer WV	1	12,300 0.73 13.00		30,000	2			58.725	2.387	
SSM Coal America Boyd Monthly/Non-Union /Broker KY	6	12,500 0.74 12.00		30,000	2			60.637	2.425	
Teco Coal Corp Perry Monthly/Non-Union /Producer KY	7	12,800 0.75 9.00		30,000	2			63.246	2.471	
Magnum Coal Sales Kanawha Monthly/Non-Union /Producer WV	5	12,500 0.77 13.00		30,000	2			64.079	2.563	
M. C. Miming Pike Monthly/Non-Union /Producer KY	2	12,500 0.74 10.00		20,000	1			68.333	2.733	



FUEL EVALUATION FOR SPURLOCK UNIT NO. 1
3RD & 4TH QUARTERS 2007

Date: 04/12/2007
Event Nbr: 85
Bid End Date: 03/23/2007

Coal Supplier	Number	Quality Btu		Tons	Term	Delivery Cost		Evaluated Cost		Reason for Recommendation
		% Sulfur	% Ash			\$ Ton	MMBtu	\$ Ton	MMBtu	
Progress Fuels Various Monthly/Non-Union /Broker	9	11,500	1.00	42,800	6	36.699	1.596	49.177	2.138	This coal purchased was the lowest evaluated cost available to meet our tonnage requirements.
		15.00						<i>Recommended</i>		
SSM Coal America Boyd Weekly /Non-Union /Broker	5	11,500	0.94	23,000	6			49.170	2.138	
Traxys North America Various Monthly/Non-Union /Broker	1	11,500	1.03	25,000	6			52.977	2.303	
Trinity Coal Perry Weekly /Non-Union /Producer	11	12,000	1.00	23,000	6			56.809	2.367	
Koch Carbon Various Monthly/Non-Union /Broker	4	11,250	0.87	23,000	6			53.432	2.375	
Argus Energy Martin Weekly /Non-Union /Producer	8	11,300	0.93	25,000	6			54.218	2.399	
Arch Coal Sales Boyd Monthly/Non-Union /Producer	2	11,500	1.00	23,000	6			57.927	2.519	
Miller Brothers Knott Weekly /Non-Union /Producer	7	11,500	1.30	23,000	6			60.661	2.637	
		15.00								



FUEL EVALUATION FOR SPURLOCK UNIT NO. 1

3RD & 4TH QUARTERS 2007

Date: 04/12/2007
Event Nbr: 85
Bid End Date: 03/23/2007

Coal Supplier	Number	Quality Btu		Tons	Term	Delivery Cost		Evaluated Cost		Reason for Recommendation
		% Sulfur	% Ash			\$ Ton	\$ MMBtu	\$ Ton	\$ MMBtu	
KIVA Coal Sales Various Weekly / Non-Union / Broker	6	11,000	1.70	7,500	6			60.480	2.749	
Alliance Coal Gibson Monthly / Non-Union / Producer	3	11,000	0.81	23,000	6			62.508	2.841	
Coalsales, LLC Oakland Monthly / Non-Union / Producer	10	10,800	1.66	23,000	6			67.509	3.125	
Massey Utility Boone Monthly / Non-Union / Producer	12							No Coal Available		
ICG LLC Perry Monthly / Non-Union / Producer	13							No Price Available		



EAST KENTUCKY POWER COOPERATIVE, INC

**PSC CASE NO. 2007-00277
FUEL ADJUSTMENT CLAUSE
INFORMATION REQUEST RESPONSE**

**COMMISSION STAFF'S INFORMATION REQUEST DATED 08/03/07
REQUEST 19**

RESPONSIBLE PARTY: Ann F. Wood

- Request 19.**
- a. List all intersystem sales during the period under review in which East Kentucky used a third party's transmission system.
 - b. For each sale listed above:
 - (1) Describe how East Kentucky addressed for FAC reporting purposes the cost of fuel expended to cover any line losses incurred to transmit its power across the third party's transmission system.
 - (2) State the line loss factor used for each transaction and describe how that line loss factor was determined.

- Response 19.**
- a. Please see page 2 of this response.
 - b. (1) For each transaction, the cost of fuel recognizes the line loss factor provided in each party's OATT and EKPC's transmission system losses.
 - (2) The OATT line loss factors for third party transactions are shown below:

TVA 2%-4.5%

In addition, EKPC used line loss factors of 6.11% in November, 4.29% in December, 4.37% in January, and 5.57% in March.

East Kentucky Power Cooperative
Intersystem Sales Transactions that
Use a Third Party Transmission System
November 2006-April 2007

a.	Date	Power Sold To	MWh Sold
	11/9/06	Oglethorpe	50
	11/10/06	Cargill	1,581
	12/13/06	Cargill	50
	1/13/07	Cobb Electric	800
	1/13/07	Cobb Electric	800
	1/14/07	Cobb Electric	800
	1/14/07	Cobb Electric	800
	3/9/07	The Energy Authority	77
	3/9/07	The Energy Authority	71
	3/10/07	The Energy Authority	71
	3/10/07	The Energy Authority	71
	3/10/07	The Energy Authority	71
	3/10/07	The Energy Authority	71
	3/11/07	The Energy Authority	444
	3/11/07	The Energy Authority	132

EAST KENTUCKY POWER COOPERATIVE, INC

PSC CASE NO. 2007-00277

FUEL ADJUSTMENT CLAUSE

INFORMATION REQUEST RESPONSE

COMMISSION STAFF'S INFORMATION REQUEST DATED 08/03/07

REQUEST 20

RESPONSIBLE PARTY: Ann F. Wood

Request 20. Describe each change that East Kentucky made during the period under review to its methodology for calculating intersystem sales line losses.

Response 20. No changes in methodology for calculating intersystem sales line losses occurred during the period under review.