



Superintendent
Phillip Ward

Deputy Superintendent
Russell D. Rose

OLDHAM COUNTY WATER DISTRICT

PO BOX 51
Buckner, Kentucky 40010
502-222-1690 FAX - 502-222-5701

Commissioners

Gus Daeuble
Melvin Milburn
Jody Curry
Jay Hall
Wm. Robert Durbin

9-6-2007

RECEIVED

Public Service Commission
730 Schenkel Lane
PO Box 615
Frankfort KY 40602

SEP 06 2007

PUBLIC SERVICE
COMMISSION

Attention: Beth O'Donnell
Executive Director

Regarding: De-annexation of territory of the Oldham County Water District
to the City of LaGrange Case #2007-00193

Dear Ms. O'Donnell:

Enclosed you will find the following answers to your staff's data request:

Question:

1. See attached.
2. Yes see attached Fiscal Court Minutes.
3. Yes see attached letter from City of La Grange Mayor.
4. Yes see attached letter from La Grange Utilities Commission Director.
5. No see attached rate schedule for La Grange Utilities Commission.
6. To be completed after PSC approval.
7. Louisville Courier Journal (date Wednesday March 23rd, 2005) see attached e-mail from Angela Black Dated 9-7-2006.
8. See attached rate schedule for La Grange Utilities Commission.
9. None.
10. See attached map from OCWD.
11.
 - a. Approx 300 residential meters and 6 miles of 6 inch PVC line and attached valves and hydrants.
 - b. Yes
 - c. FMHA & Grant
 - d. No
 - e. Not Applicable

- 13
- f. Not Applicable
 - g. None; because OCWD will still sell the same amount of water only wholesale not retail, but LUC will be responsible for all maintenance, repairs, bad debt, etc. this should offset the difference between wholesale and retail.
 - a. Customers were projected based on acreage.
 - b. Residential is the standard 250GPD used by the DOW. Commercial was based on projections provided by GRW Engineers based on past experience.
14. The OCEDA development will be treated like any other development, as plans and phases are presented we will determine the need for additional hydraulic and treatment capacity, and the developer will be responsible for installing the required infrastructure needed for their development.
- 15.
- a. See answer to number 14.
 - b. See answer to number 14.
 - c. See answer to number 14.

As explained in our literature, we don't see the need for both utilities to upgrade our systems to raise one area of a pressure plane. The Oldham County Water District will still sell or provide water, but at a wholesale vs. a retail rate.

In closing, we are asking the Public Service Commission's approval of this resolution. Thank you for your consideration and attention to this matter.

To the best of my knowledge the answers given here are true and correct

Sincerely,



Phillip Ward
Superintendent

attachments

Superintendent
Phillip Ward



Commissioners
Gus Daeuble
Melvin Milburn
Jody Curry
Jay Hall
Wm. Robert Durbin

OLDHAM COUNTY WATER DISTRICT

PO BOX 51
Buckner, Kentucky 40010
502-222-1690 FAX - 502-222-5701

May 9, 2007

Public Service Commission
730 Schenkel Lane
PO Box 615
Frankfort KY 40602

Attention: Beth O'Donnell
Executive Director

Regarding: De-annexation of territory of the Oldham County Water District
to the City of LaGrange

Dear Ms. O'Donnell:

Enclosed you will find the following:

1. Petition to de-annex.
2. Oldham County Fiscal Court Minutes showing approval.
3. An agreement signed by the Mayor of LaGrange.
4. Draft of news article to customers (Courier Journal Neighborhood Section) Oldham County.
5. Letter from LaGrange Utilities Director.
6. GRW Engineers letter on revenue projections.
7. A meets and bonds description of de-annexation.
8. A cost comparison – LaGrange Utilities vs. Oldham County Water District.
9. Arial photographs of areas.
10. Presentation packet.

Both utilities are in agreement with this resolution. The LaGrange Utilities Commission has a lower rate than Oldham County Water District, therefore, any customer relinquished to LaGrange Utilities will pay a smaller bill. This will involve approximately 300 customers. LaGrange, by accepting this resolution, has agreed to allow

Public Service Commission
May 9, 2007
Page 2

Oldham County Water District to service all of the OCEDA Economic Development Campus without any opposition, which encompasses approximately 1000 acres (see GRW letter on revenue projections). As explained in our literature, we don't see the need for both utilities to upgrade our systems to raise one area of a pressure plane. The Oldham County Water District will still sell or provide water, but at a wholesale vs. a retail rate.

In closing, we are asking the Public Service Commission's approval of this resolution. Thank you for your consideration and attention to this matter.

Sincerely,

A handwritten signature in black ink, appearing to read "Phillip Ward", written over a large, stylized initial "P".

Phillip Ward
Superintendent

attachments

AUGUST 7, 2007

The Oldham County Fiscal Court convened at a regular meeting at 2:00PM with the County Judge-Executive Duane Murner, County Attorney John R. Fendley and the following Magistrates in attendance: Steve Church, Rick Rash, Bob Leslie, David Voegele, Steve Greenwell, Bob Deibel, Scott Davis and Iva Davis.

APPROVAL OF AGENDA:

Motion made by Magistrate Greenwell and seconded by Magistrate Deibel to approve the agenda as submitted. Motion carried unanimously.

APPROVAL OF MINUTES:

Motion made by Magistrate Leslie and seconded by Magistrate Scott Davis to approve the minutes of July 17, 2007 as submitted with the following revisions. Page 117, Building Construction/Maintenance Committee: clarify that the \$19,000.00 to Jordan Air was for a 20 ton replacement air conditioner unit. Page 116, Tingle Lane Closure: clarify that a committee was appointed by the court to review information on road closure. Motion carried unanimously.

PROCLAMATIONS:

The court recognized by Proclamation Derek McMahan for his accomplishment of winning the Knight Essay contest.

The court recognized by Proclamation the Little League/Senior Division team for its 2007 Kentucky State Girls Softball Championship title.

PUBLIC COMMENT:

None.

Judge-Executive Murner commended Project Guild for Oldham County Day and the Fairboard for the Oldham County Fair, thanked George Parrish and Gene Crady for Brownsboro Days and reminded the court of the upcoming River Daze and Bluegrass Independent Film Festival.

WATER DISTRICT PRESENTATION:

Phillip Ward, Oldham County Water District presented information to the court regarding redistricting the service areas between LaGrange Utilities and Oldham County Water District to create a high pressure plane to serve the high elevation areas.

Motion made by Magistrate Rash and seconded by Magistrate Deibel to authorize the Judge-Executive to reconfirm the 2005 Fiscal Court decision to support the redrawing of the service areas between LaGrange Utilities and Oldham County Water in order to create a high pressure plane to serve the high elevation areas as submitted. **Exhibit #1 8/7/2007**. Motion carried unanimously.

COUNTY ADMINISTRATION:**Payables**

Motion made by Magistrate Church and seconded by Magistrate Leslie to approve the payables as submitted. **Exhibit #2 8/7/2007**. Motion carried unanimously.

PERSONNEL/APPOINTMENTS:**OLDA Board**

Motion made by Magistrate Deibel and seconded by Magistrate Greenwell to appoint Parminder Jassal to the OLDA Board with a term to expire 6/1/2010. Motion carried unanimously.

OCSD Board

Motion made by Judge-Executive Murner and seconded by Magistrate Deibel to appoint Cindy Vogt to the Oldham County Sewer District Board with a term to expire 7/1/2010. Motion carried unanimously.

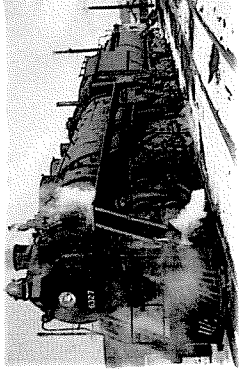


TREE CITY USA.



Explore and Enjoy Our Heritage

CITY OF LAGRANGE
307 WEST JEFFERSON STREET
LAGRANGE, KENTUCKY 40031
(502) 222-1433; FAX (502) 222-5875
www.lagrange.net



LaGrange, A Train Runs Through It.

Phillip Ward
Oldham County Water District
Post Office Box 51
Buckner, Kentucky 40010

Dear Mr. Ward:

September 5, 2007

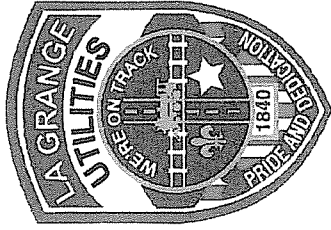
Thank you for your continued efforts to maintain cooperation and coordination between our all important water utilities. The City Council of the City of La Grange still supports the de-annexation by the Oldham County Water District as authorized under Resolution No. 3-2005 entered on March 7, 2005. The City of La Grange has had no discussions and taken no action to reverse that decision and still supports Resolution No. 3-2005. As a matter of fact since that date the City of La Grange and the La Grange Utility Commission have proceeded in good faith, based on the assurance of de-annexation, to cooperate and coordinate with new development in and around the City of La Grange to provide improved water service through investment in new infrastructure. Again thank you for your efforts to assist the City of La Grange with continuing coordination of the provision of water service so vital to our expanding economic development efforts within and around the City of La Grange.

Sincerely,

Elsie B. Carter
Mayor of LaGrange

Whh/Mayor ltr OCWD/9-5-07 final





.....

LaGrange Utilities Commission
203 South Walnut Street
LaGrange Kentucky 40031
Phone: (502) 222-9325
Fax: (502) 222-4154
www.luc@insightbb.com

September 5, 2007

Mr. Phillip Ward
Oldham County Water District
P. O. Box 51
Buckner, Kentucky 40010-0051

Re: Petition to de-annex

Dear Phillip,

As stated in the letter to you from Russ Rose dated August 13, 2002 the LaGrange Utilities Commission still supports the de-annexation by Oldham County Water District.

Sincerely,

John M. Bennett, Jr., P.E., Director
LaGrange Utilities Commission

cc: City of LaGrange
Oldham County Fiscal Court

.....

**La Grange Utilities Commission
Rate Chart**

Rates To Print Service Type Rates
 Service Type WA Water
 Rate 01 5/8-3/4 Water Meter
 Addon Type Not Applicable
 Addon Rate Not Applicable
 Print Usage Tables No
 Usage Range Not Applicable
 Usage Increment Not Applicable
 Include Inactive Rates No

Service Type	WA Water	Rate Code	01	Description	5/8-3/4 Water Meter	Is Metered	<input checked="" type="checkbox"/>	Is Inactive	<input type="checkbox"/>
Print Description On Bill	<input type="checkbox"/>	Is Service Charge	<input type="checkbox"/>	Is Single Calculation	<input type="checkbox"/>	Is Accumulate Minimum	<input type="checkbox"/>		
Bill Code	W1								
AR Code	WAT Water Billing			Units Of Measure	Gallons				
GL Revenue Account	00300-0001			Water Sales					
GL AR Account	00140-0000			Customer Accounts					
GL Liability Account	00140-0000			Customer Accounts					
GL Cash Account	00100-0000			Cash - General Fund (BL&D)					
GL Deposit Refundable Account	00220-0000			Meter Deposit Fund - Customer					
GL Bad Debt Writeoff Account	00525-0001			Bad Debts Charged Off					
GL Bad Debt Recovery Account	00510-0001			Bad Debts Recovered					
Calculation Method	Usage								
Based On Service Type				Reading Factor	100.000				
Base Amount	\$3.94			Prorate Minimum	\$0.00				
				Add Amount					
				Cutoff					
				2,000	\$0.00				1.9400
				3,000	\$3.88				2.9500
				5,000	\$12.73				2.7500
				20,000	\$26.48				2.2100
				999,999,999	\$70.68				1.9600

**La Grange Utilities Commission
Rate Chart**

Rates To Print Service Type Rates
 Service Type WA Water
 Rate 03 Out of City Water
 Addon Type Not Applicable
 Addon Rate Not Applicable
 Print Usage Tables No
 Usage Range Not Applicable
 Usage Increment Not Applicable
 Include Inactive Rates No

Service Type	WA Water	Rate Code	03	Description	Out of City Water	Is Metered	Is Inactive
Print Description On Bill	<input type="checkbox"/>	Is Service Charge	<input type="checkbox"/>	Is Single Calculation	<input type="checkbox"/>	<input checked="" type="checkbox"/>	<input type="checkbox"/>
Bill Code	W3	Is Accumulate Minimum	<input type="checkbox"/>	Units Of Measure	Gallons		
AR Code	WAT Water Billing			Water Sales			
GL Revenue Account	00300-0001			Customer Accounts			
GL AR Account	00140-0000			Customer Accounts			
GL Liability Account	00140-0000			Cash - General Fund (BL&D)			
GL Cash Account	00100-0000			Meter Deposit Fund - Customer			
GL Deposit Refundable Account	00220-0000			Bad Debts Charged Off			
GL Bad Debt Writeoff Account	00525-0001			Bad Debts Recovered			
GL Bad Debt Recovery Account	00510-0001						
Calculation Method	Usage						
Based On Service Type				Reading Factor	100.000		
Base Amount	\$4.93	Cutoff		Prorate Minimum	\$0.00		
				Add Amount			Rate / 1000
		2,000		\$0.00	\$0.00		2.4300
		3,000		\$4.86	\$4.86		3.6900
		5,000		\$15.93	\$15.93		3.4400
		20,000		\$33.13	\$33.13		2.7600
		999,999,999		\$88.33	\$88.33		2.4500

robust flow from a shower head on the second story or to allow a homeowner to use two water outlets at the same time. Because elevation is critical, the new water tower will be about 60 feet higher than the current tank. It should boost pressure about 25 pounds per square inch, Rose said. Also, the change in district boundaries may mean lower water bills for some. An Oldham County Water District customer who uses 8,000 gallons a month pays about \$30 depending on the size of line feeding the house. Oldham customers shifted into the La Grange district will pay almost the same - \$29.69 - if they live outside La Grange. But bills for those in the city will drop to \$23.68. Rose said customers will be notified about the change in service areas and rates. There's no timetable yet for the changeover. MAP; LAGRANGE UTILITIES SERVICE AREA BY STEVE DURBIN, THE C-J (SEE LIBRARY MICROFILM OR LIBRARY KIOSK PDF PAGES)

Oldham County Water Utility Boundary Adjustment

GPS WATERMANS

SIZE 1 2 3 4 5 6 8 10 12 14 16 18 24

GPS VALVES

SIZE 1 2 3 4 5 6 8 10 12 14 16 18 24

GPS VALVES

SIZE 1 2 3 4 5 6 8 10 12 14 16 18 24

GPS VALVES

SIZE 1 2 3 4 5 6 8 10 12 14 16 18 24

GPS VALVES

SIZE 1 2 3 4 5 6 8 10 12 14 16 18 24

GPS VALVES

SIZE 1 2 3 4 5 6 8 10 12 14 16 18 24

GPS VALVES

SIZE 1 2 3 4 5 6 8 10 12 14 16 18 24

GPS VALVES

SIZE 1 2 3 4 5 6 8 10 12 14 16 18 24

GPS VALVES

SIZE 1 2 3 4 5 6 8 10 12 14 16 18 24

GPS VALVES

SIZE 1 2 3 4 5 6 8 10 12 14 16 18 24

GPS VALVES

SIZE 1 2 3 4 5 6 8 10 12 14 16 18 24

GPS VALVES

SIZE 1 2 3 4 5 6 8 10 12 14 16 18 24

GPS VALVES

SIZE 1 2 3 4 5 6 8 10 12 14 16 18 24

GPS VALVES

SIZE 1 2 3 4 5 6 8 10 12 14 16 18 24

GPS VALVES

SIZE 1 2 3 4 5 6 8 10 12 14 16 18 24

GPS VALVES

SIZE 1 2 3 4 5 6 8 10 12 14 16 18 24

GPS VALVES

SIZE 1 2 3 4 5 6 8 10 12 14 16 18 24

GPS VALVES

SIZE 1 2 3 4 5 6 8 10 12 14 16 18 24

GPS VALVES

SIZE 1 2 3 4 5 6 8 10 12 14 16 18 24

GPS VALVES

SIZE 1 2 3 4 5 6 8 10 12 14 16 18 24

GPS VALVES

SIZE 1 2 3 4 5 6 8 10 12 14 16 18 24

GPS VALVES

SIZE 1 2 3 4 5 6 8 10 12 14 16 18 24

GPS VALVES

SIZE 1 2 3 4 5 6 8 10 12 14 16 18 24

GPS VALVES

SIZE 1 2 3 4 5 6 8 10 12 14 16 18 24

GPS VALVES

SIZE 1 2 3 4 5 6 8 10 12 14 16 18 24

GPS VALVES

SIZE 1 2 3 4 5 6 8 10 12 14 16 18 24

GPS VALVES

SIZE 1 2 3 4 5 6 8 10 12 14 16 18 24

GPS VALVES

SIZE 1 2 3 4 5 6 8 10 12 14 16 18 24

GPS VALVES

SIZE 1 2 3 4 5 6 8 10 12 14 16 18 24

GPS VALVES

SIZE 1 2 3 4 5 6 8 10 12 14 16 18 24

GPS VALVES

SIZE 1 2 3 4 5 6 8 10 12 14 16 18 24

GPS VALVES

SIZE 1 2 3 4 5 6 8 10 12 14 16 18 24

GPS VALVES

SIZE 1 2 3 4 5 6 8 10 12 14 16 18 24

GPS VALVES

SIZE 1 2 3 4 5 6 8 10 12 14 16 18 24

GPS VALVES

SIZE 1 2 3 4 5 6 8 10 12 14 16 18 24

GPS VALVES

SIZE 1 2 3 4 5 6 8 10 12 14 16 18 24

GPS VALVES

SIZE 1 2 3 4 5 6 8 10 12 14 16 18 24

GPS VALVES

SIZE 1 2 3 4 5 6 8 10 12 14 16 18 24

GPS VALVES

SIZE 1 2 3 4 5 6 8 10 12 14 16 18 24

GPS VALVES

SIZE 1 2 3 4 5 6 8 10 12 14 16 18 24

GPS VALVES

SIZE 1 2 3 4 5 6 8 10 12 14 16 18 24

GPS VALVES

SIZE 1 2 3 4 5 6 8 10 12 14 16 18 24

GPS VALVES

SIZE 1 2 3 4 5 6 8 10 12 14 16 18 24

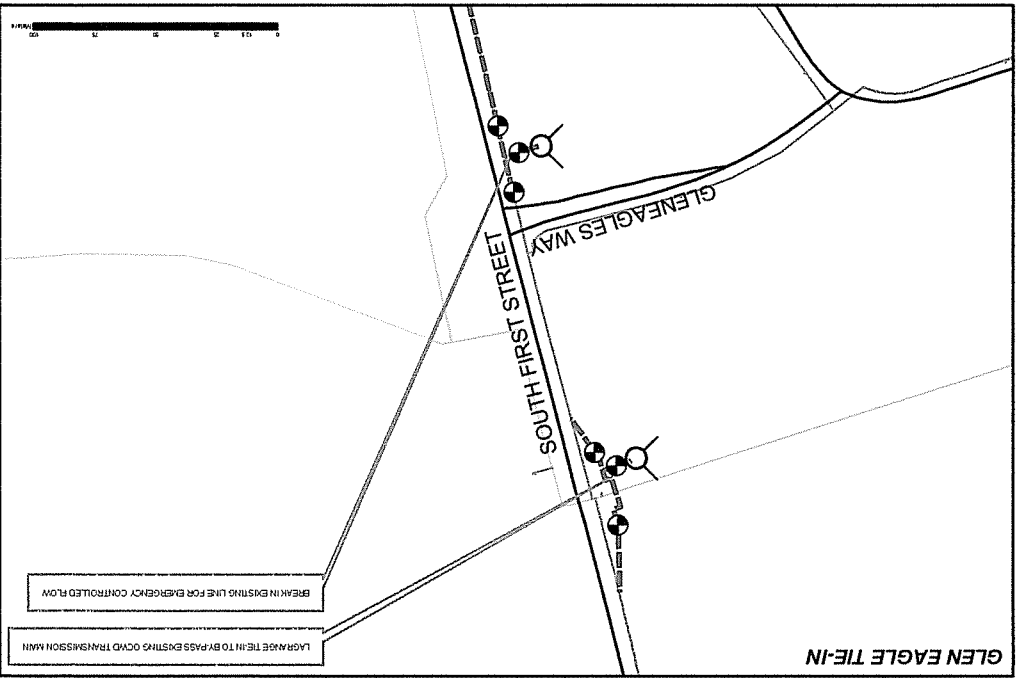
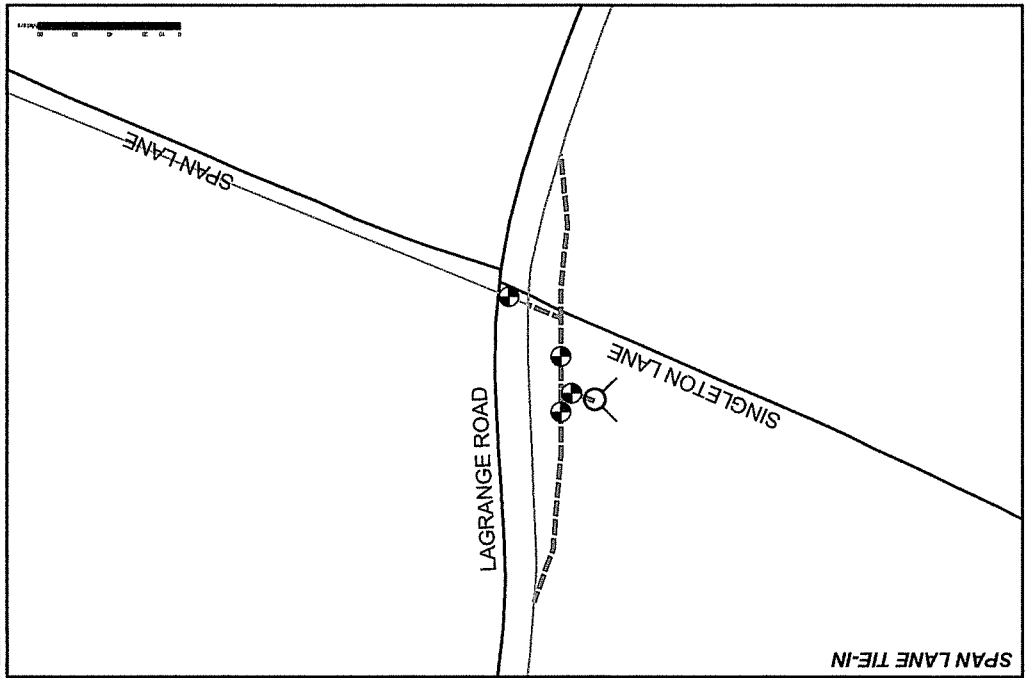
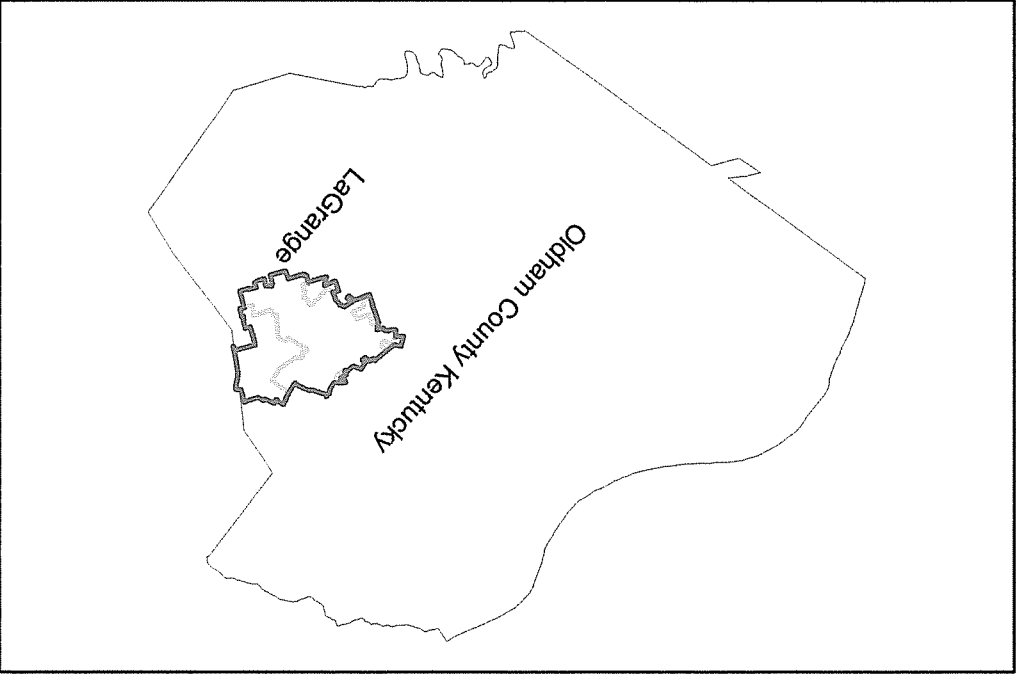
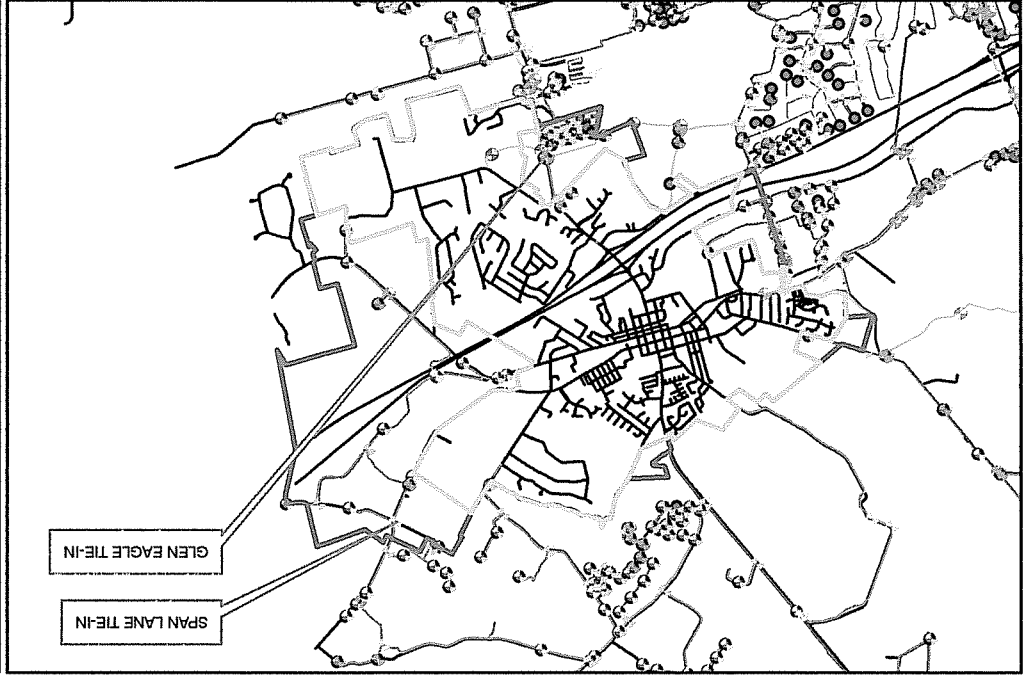
GPS VALVES

SIZE 1 2 3 4 5 6 8 10 12 14 16 18 24

GPS VALVES

SIZE 1 2 3 4 5 6 8 10 12 14 16 18 24

• All tie-ins are set for controlled flushable flows.



Oldham County Water District Mapping
 Drawn By: Scott Cornfield
 Checked by: Billy Baker
 Date: September 5, 2007

Sheet No. 09062007

Legend
 EXISTING BOUNDARY
 PROPOSED BOUNDARY
 GPS WATERMANS
 GPS HYDRANTS

Legend
 EXISTING BOUNDARY
 PROPOSED BOUNDARY
 GPS WATERMANS
 GPS HYDRANTS

Legend
 EXISTING BOUNDARY
 PROPOSED BOUNDARY
 GPS WATERMANS
 GPS HYDRANTS

LAGRANGE TIE-IN TO BYPASS EXISTING OCWD TRANSMISSION MAIN
 BREAK-IN EXISTING LINE FOR EMERGENCY CONTROLLED FLOW

0 10 20 30 40 50 Feet

0 10 20 30 40 50 Feet

GLEN EAGLE TIE-IN

SPAN LANE TIE-IN

0 10 20 30 40 50 Feet

SPAN LANE TIE-IN
 LAGRANGE ROAD
 SINGLETON LANE

SPAN LANE

LAGRANGE TIE-IN TO BYPASS EXISTING OCWD TRANSMISSION MAIN
 BREAK-IN EXISTING LINE FOR EMERGENCY CONTROLLED FLOW

0 10 20 30 40 50 Feet

0 10 20 30 40 50 Feet

SOUTH FIRST STREET
 GLENEAGLES WAY

GLEN EAGLE TIE-IN

LAGRANGE TIE-IN TO BYPASS EXISTING OCWD TRANSMISSION MAIN
 BREAK-IN EXISTING LINE FOR EMERGENCY CONTROLLED FLOW