



LG&E Energy LLC
220 West Main Street (40202)
P.O. Box 32030
Louisville, Kentucky 40232

January 17, 2005

RECEIVED

JAN 17 2006

PUBLIC SERVICE
COMMISSION

Elizabeth O'Donnell
Executive Director
Kentucky Public Service Commission
211 Sower Boulevard
Frankfort, Kentucky 40602-0615

**RE: *AN EXAMINATION OF THE APPLICATION OF THE FUEL ADJUST-
MENT CLAUSE OF LOUISVILLE GAS AND ELECTRIC COMPANY
FROM MAY 1, 2005 THROUGH OCTOBER 31, 2005
CASE NO. 2005-00497***

Dear Ms. O'Donnell:

Enclosed please find an original and four (4) copies of the Response of Louisville Gas and Electric Company to Information Requested in Appendix A of the Commission's Order dated December 27, 2005, in the above-referenced proceeding.

Also enclosed are an original and ten (10) copies of a Petition for Confidential Protection regarding information provided in response to Question No. 17 (b).

Please contact me if you have any questions concerning this filing.

Sincerely,

Robert M. Conroy
Manager, Rates

Enclosures

COMMONWEALTH OF KENTUCKY
BEFORE THE PUBLIC SERVICE COMMISSION

In the Matter of:

AN EXAMINATION OF THE)
APPLICATION OF THE FUEL)
ADJUSTMENT CLAUSE OF) CASE NO. 2005-00497
LOUISVILLE GAS AND ELECTRIC)
COMPANY FROM MAY 1, 2005)
THROUGH OCTOBER 31, 2005)

RESPONSE OF
LOUISVILLE GAS AND ELECTRIC COMPANY
TO
INFORMATION REQUESTED IN
APPENDIX A OF COMMISSION'S ORDER
DATED DECEMBER 27, 2005

FILED: January 17, 2006

LOUISVILLE GAS AND ELECTRIC COMPANY

**Response to Information Requested in Appendix A to
Commission's Order Dated December 27, 2005**

Case No. 2005-00497

Question No. 1

Witness: Mike Dotson

Q-1. For the period from May 1, 2005 through October 31, 2005, list each vendor from whom coal was purchased and the quantities and the nature of each purchase (e.g., spot or contract).

A-1. **PURCHASE
VENDOR**

TONNAGE

TYPE

American Coal Company	11,947	Spot
American Mining & Mfrg.	1,567	Spot
Black Beauty	395,780	Contract
Charolais Coal	426,080	Contract
Charolais Coal	36,965	Spot
Coal Network	3,106	Spot
Consol	487,471	Contract
Alliance Coal Sales	293,678	Contract
Alliance Coal Sales	255,893	Spot
Marietta Coal Company	48,806	Contract
Peabody Coal Sales	426,691	Contract
Peabody Coal Sales	107,119	Spot
Sands Hill Coal Company	130,893	Contract
Smoky Mountain Coal	167,464	Contract
Smoky Mountain Coal	23,578	Spot
Synfuel Solutions Operating	974,894	Contract
Southern Appalachian Fuels	213,253	Spot
Wabash	158,949	Spot

TOTAL **4,164,134**

LOUISVILLE GAS AND ELECTRIC COMPANY

**Response to Information Requested in Appendix A to
Commission's Order Dated December 27, 2005**

Case No. 2005-00497

Question No. 2

Witness: Mike Dotson / B. Keith Yocum

Q-2. For each generating station or unit for which a separate coal pile is maintained, state for the period from May 1, 2005 through October 31, 2005 the actual amount of coal burned in tons, the actual amount of coal deliveries in tons, the total kWh generated, and the actual capacity factor at which the plant operated.

A-2. For May 1, 2005 to October 31, 2005

The North American Electric Reliability Council Generation Availability Data System defines Capacity Factor as the value equal to the Net MWH produced divided by the product of the hours in the period times the unit rating.

Plant	Coal Burn (Tons)	Coal Receipts (Tons)	Net MWH	Capacity Factor (Net MWH)/ (period hrs x MW rating)
Cane Run	905,450	899,073	1,924,720	77.4%
Mill Creek	2,268,806	2,309,924	4,920,504	75.7%
Trimble Co	774,568	955,133	1,828,501	81.0%

LOUISVILLE GAS AND ELECTRIC COMPANY

**Response to Information Requested in Appendix A to
Commission's Order Dated December 27, 2005**

Case No. 2005-00497

Question No. 3

Witness: B. Keith Yocum

Q-3. List all firm power commitments for LG&E from May 1, 2005 through October 31, 2005 for (a) purchases and (b) sales. This list shall identify the electric utility, the amount of commitment in MW, and the purpose of the commitment (e.g., peaking, emergency).

A-3. a. Firm Purchases

LG&E purchased its contract participation ratio (7%) of the released capacity for the months in question:

<u>Utility</u>	<u>Companies' Amt (MW)</u>	<u>LG&E Portion (MW)</u>	<u>Purpose</u>
OVEC (May 2005)	~ 207	~154	Baseload
OVEC (June 2005)	~ 204	~152	Baseload
OVEC (July 2005)	~ 201	~150	Baseload
OVEC (Aug 2005)	~ 201	~150	Baseload
OVEC (Sep 2005)	~ 203	~151	Baseload
OVEC (Oct 2005)	~ 184	~137	Baseload

b. Sales

NONE

LOUISVILLE GAS AND ELECTRIC COMPANY

**Response to Information Requested in Appendix A to
Commission's Order Dated December 27, 2005**

Case No. 2005-00497

Question No. 4

Witness: Robert M. Conroy

Q-4. Provide a monthly billing summary for sales to all electric utilities for the period May 1, 2005 through October 31, 2005.

A-4. Please see the attached sheets.

Louisville Gas and Electric Company

POWER TRANSACTION SCHEDULE

Month Ended: April 30, 2005

Company	Type of Transaction	KWH	Billing Components			Total Charges(\$)
			Demand(\$)	Fuel Charges(\$)	Other Charges(\$)	
Sales						
AMERICAN ELECTRIC POWER SERVICE CORP.	AEP Non-Displacement	(11,000)		40.51	(316.39)	(275.88)
BIG RIVERS ELECTRIC CORP.	BREC Non-Displacement	103,000		6,520.77	4,147.91	10,668.68
CINERGY SERVICES, INC.	CIN Non-Displacement	16,000		993.12	631.73	1,624.85
EAST KENTUCKY POWER COOPERATIVE	EKPC Non-Displacement	25,000		1,530.25	973.40	2,503.65
KANSAS CITY POWER & LIGHT	KCPL Non-Displacement	48,000		1,521.43	967.78	2,489.21
MIDWEST INDEPENDENT TRANSMISSION SYSTEM OPERATOR, INC.	MISO Non-Displacement	213,068,000		4,708,077.80	2,994,850.34	7,702,928.14
OHIO VALLEY ELECTRIC CORPORATION	OVEC Non-Displacement	21,000		1,326.05	843.52	2,169.57
PUBLIC SERVICE COMPANY OF COLORADO	PSC Non-Displacement	(30,000)		(575.67)	(931.56)	(1,507.23)
SEMPRA ENERGY TRADING CORP.	SEMP Non-Displacement	1,000		19.19	59.30	78.49
SOUTHERN INDIANA GAS & ELECTRIC CO.	SIGE Non-Displacement	81,000		4,940.18	3,142.50	8,082.68
MISCELLANEOUS		-		(1,065.16)	1,065.16	-
EAST KENTUCKY POWER COOPERATIVE	EKPC Short-Term	25,395,000	375,337.46	432,403.91	87,262.47	895,003.84
KENTUCKY UTILITIES COMPANY	KU Non-Displacement	359,890,000		5,762,227.45	116.89	5,762,344.34
EAST KENTUCKY POWER COOPERATIVE	EKPC Allowances	-		-	38,976.00	38,976.00
TOTAL		598,607,000	375,337.46	10,917,959.83	3,131,789.05	14,425,086.34

Month Ended: May 31, 2005

Company	Type of Transaction	KWH	Billing Components			Total Charges(\$)
			Demand(\$)	Fuel Charges(\$)	Other Charges(\$)	
Sales						
AMERICAN ELECTRIC POWER SERVICE CORP.	AEP Non-Displacement	90,000		7,292.06	1,692.73	8,984.79
BIG RIVERS ELECTRIC CORP.	BREC Non-Displacement	1,141,000		99,923.60	23,195.54	123,119.14
CINERGY SERVICES, INC.	CIN Non-Displacement	84,000		6,814.49	1,581.88	8,396.37
EAST KENTUCKY POWER COOPERATIVE	EKPC Non-Displacement	23,000		1,873.54	434.90	2,308.44
MIDWEST INDEPENDENT TRANSMISSION SYSTEM OPERATOR, INC.	MISO Non-Displacement	315,243,000		8,845,265.53	2,053,275.39	10,898,540.92
OHIO VALLEY ELECTRIC CORPORATION	OVEC Non-Displacement	29,000		2,481.55	576.05	3,057.60
SOUTHERN INDIANA GAS & ELECTRIC CO.	SIGE Non-Displacement	61,000		4,940.97	1,146.96	6,087.93
MISCELLANEOUS		-		-	-	-
EAST KENTUCKY POWER COOPERATIVE	EKPC Short-Term	20,304,000	367,341.98	272,562.71	113,652.87	753,557.56
KENTUCKY UTILITIES COMPANY	KU Non-Displacement	434,544,000		7,503,026.15	2,494.74	7,505,520.89
EAST KENTUCKY POWER COOPERATIVE	EKPC Allowances	-		-	41,550.00	41,550.00
TOTAL		771,519,000	367,341.98	16,744,180.60	2,239,601.06	19,351,123.64

Month Ended: June 30, 2005

Company	Type of Transaction	KWH	Billing Components			Total Charges(\$)
			Demand(\$)	Fuel Charges(\$)	Other Charges(\$)	
Sales						
AQUILA INC	AQIN Non-Displacement	-		-	0.40	0.40
MIDWEST INDEPENDENT TRANSMISSION SYSTEM OPERATOR, INC.	MISO Non-Displacement	218,614,000		8,587,165.86	93,402.71	8,680,568.57
OHIO VALLEY ELECTRIC CORPORATION	OVEC Non-Displacement	-		-	48.28	48.28
MISCELLANEOUS		-		604.57	(604.57)	-
EAST KENTUCKY POWER COOPERATIVE	EKPC Short-Term	-	0.00	-	324.83	324.83
KENTUCKY UTILITIES COMPANY	KU Non-Displacement	328,659,000		7,685,485.45	4,846.77	7,690,332.22
EAST KENTUCKY POWER COOPERATIVE	EKPC Allowances	-		-	51,975.00	51,975.00
TOTAL		547,273,000	0.00	16,273,255.88	149,993.42	16,423,249.30

Month Ended: July 31, 2005

Company	Type of Transaction	KWH	Billing Components			Total Charges(\$)
			Demand(\$)	Fuel Charges(\$)	Other Charges(\$)	
Sales						
EAST KENTUCKY POWER COOPERATIVE	EKPC Non-Displacement	977,000		36,986.33	18,557.32	55,543.65
MIDWEST INDEPENDENT TRANSMISSION SYSTEM OPERATOR, INC.	MISO Non-Displacement	95,939,000		2,707,632.01	1,358,512.54	4,066,144.55
MISCELLANEOUS		-		-	-	-
KENTUCKY UTILITIES COMPANY	KU Non-Displacement	93,035,000		2,253,908.15	4,778.10	2,258,686.25
TOTAL		189,951,000	0.00	4,998,526.49	1,381,847.96	6,380,374.45

Month Ended: August 31, 2005

Company	Type of Transaction	KWH	Billing Components			Total Charges(\$)
			Demand(\$)	Fuel Charges(\$)	Other Charges(\$)	
Sales						
MIDWEST INDEPENDENT TRANSMISSION SYSTEM OPERATOR, INC.	MISO Non-Displacement	182,460,000		4,830,512.47	3,656,976.94	8,487,489.41
MISCELLANEOUS		-		1,072.38	(1,072.38)	-
KENTUCKY UTILITIES COMPANY	KU Non-Displacement	214,101,000		4,821,565.87	3,035.05	4,824,600.92
TOTAL		396,561,000	0.00	9,653,150.72	3,658,939.61	13,312,090.33

Louisville Gas and Electric Company

POWER TRANSACTION SCHEDULE

Month Ended: September 30, 2005

Company	Type of Transaction	KWH	Billing Components			Total Charges(\$)
			Demand(\$)	Fuel Charges(\$)	Other Charges(\$)	
<u>Sales</u>						
MIDWEST INDEPENDENT TRANSMISSION SYSTEM OPERATOR, INC.	MISO Non-Displacement	323,000,000		10,613,582.02	5,324,613.45	15,938,195.47
MISCELLANEOUS		-		1,419.40	(1,419.40)	-
KENTUCKY UTILITIES COMPANY	KU Non-Displacement	306,819,000		7,694,714.87	3,063.99	7,697,778.86
TOTAL		629,819,000	0.00	18,309,716.29	5,326,258.04	23,635,974.33

Month Ended: October 31, 2005

Company	Type of Transaction	KWH	Billing Components			Total Charges(\$)
			Demand(\$)	Fuel Charges(\$)	Other Charges(\$)	
<u>Sales</u>						
MIDWEST INDEPENDENT TRANSMISSION SYSTEM OPERATOR, INC.	MISO Non-Displacement	231,144,000		5,551,876.67	5,851,767.90	11,403,644.57
MISCELLANEOUS		-		(615,989.34)	615,989.34	-
KENTUCKY UTILITIES COMPANY	KU Non-Displacement	422,722,000		8,092,894.31	2,211.72	8,095,106.03
TOTAL		653,866,000	0.00	13,028,781.64	6,469,968.96	19,498,750.60

LOUISVILLE GAS AND ELECTRIC COMPANY

**Response to Information Requested in Appendix A to
Commission's Order Dated December 27, 2005**

Case No. 2005-00497

Question No. 5

Witness: B. Keith Yocum

Q-5. List LG&E's scheduled, actual, and forced outages between May 1, 2005 and October 31, 2005.

A-5. Please see the attached sheets.

Louisville Gas & Electric Company
 Cane Run Unit #4
 May 2005 through October 2005

Schedule vs. Actual

MONTH	MAINTENANCE				HOURS OF DURATION			REASON FOR DEVIATION FROM SCHEDULED MAINTENANCE OR REASON FOR FORCED OUTAGE AS APPROPRIATE
	Scheduled		Actual		Scheduled	Forced	Actual	
	FROM	TO	FROM	TO				
May	No Outages > or = 6 Hours							
June	F		6/4/2005 21:32	6/5/2005 4:27	6:55		Condensate piping - gasket repaired	
	F		6/18/2005 21:02	6/21/2005 15:28	66:26		Economizer boiler tube failures	
	F		6/23/2005 8:51	6/24/2005 15:58	31:07		Economizer boiler tube failures	
	F		6/25/2005 14:42	6/27/2005 0:55	34:13		Economizer boiler tube failures	
	F		6/27/2005 3:00	6/30/2005 15:34	84:34		Economizer boiler tube failures	
July	No Outages > or = 6 Hours							
August	F		8/28/2005 0:43	8/28/2005 17:21	16:38		Furnace wall boiler tube failures	
September	S	9/2/2005 23:24	9/4/2005 10:44	9/2/2005 23:24	9/4/2005 10:44	35:20	35:20	Superheater boiler tube failures
	F		9/9/2005 10:57	9/12/2005 12:36	73:39		Platen Superheater boiler tube failures	
October	S	10/8/2005 0:52	10/11/2005 7:45	10/8/2005 0:52	10/11/2005 7:45	78:53	78:53	Furnace wall boiler tube failures
	S	10/31/2005 7:00	—————>			17:00	0:00	Planned annual boiler overhaul – postponed until November start

Report dates of forced outage in columns headed Actual

Louisville Gas & Electric Company
 Cane Run Unit #5
 May 2005 through October 2005

Schedule vs. Actual

MONTH	MAINTENANCE				HOURS OF DURATION			REASON FOR DEVIATION FROM SCHEDULED MAINTENANCE OR REASON FOR FORCED OUTAGE AS APPROPRIATE
	Scheduled		Actual		Scheduled	Forced	Actual	
	FROM	TO	FROM	TO				
May	S	5/28/2005 22:06	5/29/2005 20:30	5/28/2005 22:06	5/29/2005 20:30	22:24	22:24	Furnace wall boiler tube failures
June	No Outages > or = 6 Hours							
July	S	7/23/2005 0:28	7/24/2005 11:57	7/23/2005 0:28	7/24/2005 11:57	35:29	35:29	Furnace wall boiler tube failures
August	F			8/6/2005 0:52	8/7/2005 10:30		33:38	Furnace wall boiler tube failures
September	No Outages > or = 6 Hours							
October	F			10/28/2005 23:33	10/29/2005 7:56		8:23	Induced draft fan - frequency drive

Report dates of forced in columns headed Actual

Louisville Gas & Electric Company
 Cane Run Unit #6
 May 2005 through October 2005

Schedule vs. Actual

MONTH	MAINTENANCE				HOURS OF DURATION			REASON FOR DEVIATION FROM SCHEDULED MAINTENANCE OR REASON FOR FORCED OUTAGE AS APPROPRIATE	
	Scheduled		Actual		Scheduled	Forced	Actual		
	FROM	TO	FROM	TO					
May	S	5/6/2005 23:36	5/8/2005 3:39	5/6/2005 23:36	5/8/2005 3:39	28:03		28:03	Furnace wall boiler tube failures
	S	5/14/2005 22:38	5/16/2005 8:23	5/14/2005 22:38	5/16/2005 8:23	33:45		33:45	Furnace wall boiler tube failures
	F			5/24/2005 2:19	5/24/2005 20:50			18:31	Furnace wall boiler tube failures
June	No Outages > or = 6 Hours								
July	F			7/1/2005 22:51	7/3/2005 5:40			30:49	Furnace wall boiler tube failures
	F			7/11/2005 4:37	7/11/2005 11:18			6:41	Boiler feed pump drain line
	F			7/15/2005 0:50	7/15/2005 12:39			11:49	Boiler feed pump suction drain line
	S	7/30/2005 1:13	7/31/2005 23:58	7/30/2005 1:13	7/31/2005 23:58	46:45		46:45	Furnace wall boiler tube failures
August	F			8/12/2005 18:42	8/15/2005 6:33			59:51	Reheater slagging
	F			8/30/2005 1:44	8/30/2005 22:06			20:22	Boiler circulating water pump valve
September	F			9/27/2005 23:16	9/29/2005 18:38			43:22	Furnace wall boiler tube failures. <i>NOTE. Surface scheduled for change-out in Spring 2006 outage</i>
October	S	10/1/2005 23:08	10/2/2005 12:07	10/1/2005 23:08	10/2/2005 12:07	12:59		12:59	Boiler discharge valve leaking

MONTH	MAINTENANCE				HOURS OF DURATION			REASON FOR DEVIATION FROM SCHEDULED MAINTENANCE OR REASON FOR FORCED OUTAGE AS APPROPRIATE
	Scheduled		Actual		Scheduled	Forced	Actual	
	FROM	TO	FROM	TO				
May	No Outages > or = 6 Hours							
June	F		6/21/2005 21:21	6/22/2005 10:42	13:21			Wet scrubber booster fans - expansion joints leak repairs
July	F		7/24/2005 6:52	7/25/2005 3:17	20:25			Furnace wall boiler tube failures
	F		7/31/2005 23:23	→	0:37			Reheater boiler tube failure
August	F		→	8/3/2005 14:18	62:18			Reheater boiler tube failure
September	S	9/3/2005 1:05	9/3/2005 21:25	9/3/2005 1:05	9/3/2005 21:25	20:20	20:20	Condenser cleaning
	S	9/26/2005 7:00	→	9/24/2005 1:08	9/27/2005 3:01	113:00	73:53	One week planned outage between 2 year inspections (did not need full week)
October	S	→	10/2/2005 15:00			39:00	0:00	One week planned outage between 2 year inspections (did not need full week)
	F		10/18/2005 1:00	10/19/2005 7:04	30:04			Furnace wall boiler tube failures

MONTH	MAINTENANCE				HOURS OF DURATION			REASON FOR DEVIATION FROM SCHEDULED MAINTENANCE OR REASON FOR FORCED OUTAGE AS APPROPRIATE
	Scheduled		Actual		Scheduled	Forced	Actual	
	FROM	TO	FROM	TO				
May	S	→	5/15/2005 15:00	→	5/15/2005 19:09	351:00	355:09	Biennial planned outage - incl boiler superheat platens, pendant tubes, and waterwall tube replacements
	S	5/20/2005 23:29	5/21/2005 12:40	5/20/2005 23:29	5/21/2005 12:40	13:11	13:11	Boiler feed pump - inspect suction valve
June	S	6/11/2005 0:40	6/12/2005 3:35	6/11/2005 0:40	6/12/2005 3:35	26:55	26:55	Furnace wall boiler tube failures
	F			6/14/2005 23:39	6/15/2005 9:56		10:17	Boiler circulating water pump - water injection line leak
	S	6/25/2005 0:35	6/26/2005 13:17	6/25/2005 0:35	6/26/2005 13:17	36:42	36:42	Superheat boiler tube failures
July	F			7/4/2005 22:35	7/5/2005 23:42		25:07	Furnace wall boiler tube failures
	F			7/28/2005 11:23	7/30/2005 10:01		46:38	Furnace wall boiler tube failures
August	F			8/7/2005 14:32	8/8/2005 12:07		21:35	Condenser tube leak
	F			8/8/2005 17:21	8/9/2005 13:57		20:36	Condenser tube leak
September	S	9/4/2005 0:16	9/6/2005 4:45	9/4/2005 0:16	9/6/2005 4:45	52:29	52:29	Air heater wash
	F			9/13/2005 22:15	9/14/2005 11:06		12:51	Boiler circulating water pump - water injection line leak
October	No Outages > or = 6 Hours							

MONTH	MAINTENANCE				HOURS OF DURATION			REASON FOR DEVIATION FROM SCHEDULED MAINTENANCE OR REASON FOR FORCED OUTAGE AS APPROPRIATE
	Scheduled		Actual		Scheduled	Forced	Actual	
	FROM	TO	FROM	TO				
May	F		—————>	5/2/2005 3:24		27:24		Flue gas desulfurization piping
	S	5/27/2005 23:47	5/30/2005 13:06	5/27/2005 23:47	5/30/2005 13:06	61:19	61:19	Secondary superheat boiler tube failures
June	No Outages > or = 6 Hours							
July	S	7/30/2005 20:03	—————>	7/30/2005 20:03	—————>	3:57	3:57	Flue gas desulfurization piping
August	S	—————>	8/1/2005 6:57	—————>	8/1/2005 6:57	6:57	6:57	Flue gas desulfurization piping
	F			8/7/2005 16:18	8/8/2005 19:29	27:11		Furnace wall boiler tube failures
	S	8/27/2005 1:26	8/28/2005 10:12	8/27/2005 1:26	8/28/2005 10:12	32:46	32:46	Precipitator repairs
September	F			9/14/2005 13:04	9/17/2005 11:01	69:57		Secondary superheat boiler tube failures
	F			9/29/2005 15:16	—————>	32:44		Secondary superheat boiler tube failures
October	F			—————>	10/1/2005 23:01	23:01		Secondary superheat boiler tube failures
	F			10/7/2005 1:27	10/8/2005 15:11	37:44		Secondary superheat boiler tube failures
	S	10/14/2005 23:49	10/17/2005 7:18	10/14/2005 23:49	10/17/2005 7:18	55:29	55:29	Secondary superheat boiler tube failures

MONTH	MAINTENANCE				HOURS OF DURATION			REASON FOR DEVIATION FROM SCHEDULED MAINTENANCE OR REASON FOR FORCED OUTAGE AS APPROPRIATE
	Scheduled		Actual		Scheduled	Forced	Actual	
	FROM	TO	FROM	TO				
May	No Outages > or = 6 Hours							
June	F		6/29/2005 17:02	→			30:58	Generator field ground - generator rotor rewind. Turbine valves also overhauled.
July	F		→	→			744:00	Generator field ground - generator rotor rewind. Turbine valves also overhauled.
August	F		→	8/4/2005 11:30			83:30	Generator field ground - generator rotor rewind. Turbine valves also overhauled.
	S	8/13/2005 0:49	8/15/2005 3:08	8/13/2005 0:49	8/15/2005 3:08	50:19	50:19	Exciter drive shaft: added balance shot to coupling between generator and exciter
	F			8/16/2005 11:08	8/16/2005 19:39		8:31	Generator current transformer - wiring ground
	F			8/18/2005 1:38	8/19/2005 6:38		29:00	Condenser tube leak
September	F			9/12/2005 23:22	9/15/2005 8:52		57:30	Secondary superheat boiler tube failures
	F			9/16/2005 15:05	9/18/2005 22:17		55:12	Reheater boiler tube failures
	F			9/20/2005 22:42	9/21/2005 9:00		10:18	Generator lockout
October	S	10/8/2005 18:19	10/10/2005 1:28	10/8/2005 18:19	10/10/2005 1:28	31:09	31:09	Condenser tube leaks
	F			10/21/2005 12:26	10/24/2005 3:21		62:55	Secondary superheat boiler tube failures

MONTH	MAINTENANCE				HOURS OF DURATION			REASON FOR DEVIATION FROM SCHEDULED MAINTENANCE OR REASON FOR FORCED OUTAGE AS APPROPRIATE
	Scheduled		Actual		Scheduled	Forced	Actual	
	FROM	TO	FROM	TO				
May	No Outages > or = 6 Hours							
June	F		6/25/2005 5:21	6/25/2005 13:25	8:04			Motor control center - short caused unit trip
July	No Outages > or = 6 Hours							
August	No Outages > or = 6 Hours							
September	F		9/22/2005 17:21	9/24/2005 2:15	32:54			Furnace wall boiler tube failures
	F		9/30/2005 11:30	→	12:30			Furnace wall boiler tube failures
October	F		→	10/1/2005 12:00	12:00			Furnace wall boiler tube failures
	S	10/3/2005 7:00	10/30/2005 15:00	10/1/2005 12:00	10/30/2005 20:21	656:00	704:21	Planned biennial outage including furnace boiler tube replacements

MONTH	MAINTENANCE				HOURS OF DURATION			REASON FOR DEVIATION FROM SCHEDULED MAINTENANCE OR REASON FOR FORCED OUTAGE AS APPROPRIATE
	Scheduled		Actual		Scheduled	Forced	Actual	
	FROM	TO	FROM	TO				
May	No Outages > or = 6 Hours							
June	F		6/26/2005 14:40	→		105:20		Starting system motor
July	F		→	→		744:00		Starting system motor
August	F		→	→		744:00		Starting system motor
September	F		→	→		720:00		Starting system motor
October			→	10/28/2005 14:25		662:25		Starting system motor

Louisville Gas & Electric Company
 Paddys Run Unit #11
 May 2005 through October 2005

Schedule vs Actual

MONTH	MAINTENANCE				HOURS OF DURATION			REASON FOR DEVIATION FROM SCHEDULED MAINTENANCE OR REASON FOR FORCED OUTAGE AS APPROPRIATE
	Scheduled		Actual		Scheduled	Forced	Actual	
	FROM	TO	FROM	TO				
May	No Outages > or = 6 Hours							
June	No Outages > or = 6 Hours							
July	No Outages > or = 6 Hours							
August	No Outages > or = 6 Hours							
September	No Outages > or = 6 Hours							
October	No Outages > or = 6 Hours							

Report dates of forced outage in columns headed Actual

Louisville Gas & Electric Company
 Paddys Run Unit #12
 May 2005 through October 2005

Schedule vs Actual

MONTH	MAINTENANCE				HOURS OF DURATION			REASON FOR DEVIATION FROM SCHEDULED MAINTENANCE OR REASON FOR FORCED OUTAGE AS APPROPRIATE
	Scheduled		Actual		Scheduled	Forced	Actual	
	FROM	TO	FROM	TO				
May	No Outages > or = 6 Hours							
June	F		6/9/2005 8:00	6/10/2005 13:15	29:15			Starting diesel batteries
	F		6/27/2005 16:30	6/28/2005 13:20	20:50			Generator lockout
July	F		7/22/2005 10:00	7/25/2005 11:45	73:45			Diesel starting motor would not start.
	F		7/25/2005 12:54	7/29/2005 8:00	91:06			Controls and instrumentation
August	F		8/2/2005 12:37	8/3/2005 3:00	14:23			Lube oil cooler
	F		8/25/2005 15:45	8/29/2005 12:29	92:44			Lack of fuel: low gas pressure issue
September	No Outages > or = 6 Hours							
October	F		10/4/2005 16:52	10/5/2005 7:00	14:08			Turning gear

Louisville Gas & Electric Company
 Paddys Run Unit # 13
 May 2005 through October 2005

Schedule vs Actual

MONTH	MAINTENANCE				HOURS OF DURATION			REASON FOR DEVIATION FROM SCHEDULED MAINTENANCE OR REASON FOR FORCED OUTAGE AS APPROPRIATE
	Scheduled		Actual		Scheduled	Forced	Actual	
	FROM	TO	FROM	TO				
May	No Outages > or = 6 Hours							
June	No Outages > or = 6 Hours							
July	No Outages > or = 6 Hours							
August	F		8/4/2005 22:17	8/6/2005 16:50	42:33			Inlet air vanes - guide actuator
	F		8/27/2005 14:18	8/29/2005 16:53	50:35			Instrument air compressor
September	No Outages > or = 6 Hours							
October	S	10/1/2005 6:00	10/1/2005 12:00	10/1/2005 6:00	10/1/2005 12:00	6:00	6:00	Switchyard circuit breakers

Louisville Gas & Electric Company
 Trimble County Unit #5
 May 2005 through October 2005

Schedule vs Actual

MONTH	MAINTENANCE				HOURS OF DURATION			REASON FOR DEVIATION FROM SCHEDULED MAINTENANCE OR REASON FOR FORCED OUTAGE AS APPROPRIATE
	Scheduled		Actual		Scheduled	Forced	Actual	
	FROM	TO	FROM	TO				
May	S	5/6/2005 20:00	5/7/2005 16:30	5/6/2005 20:00	5/7/2005 16:30	20:30	20:30	Gas supply vent valve
	S	5/12/2005 2:00	5/12/2005 19:00	5/12/2005 2:00	5/12/2005 19:00	17:00	17:00	Compressor high pressure blade inspections
June	No Outages > or = 6 Hours							
July	No Outages > or = 6 Hours							
August	S	8/23/2005 6:00	8/23/2005 12:05	8/23/2005 6:00	8/23/2005 12:05	6:05	6:05	Start-up gas control valve
	S	8/24/2005 7:00	8/24/2005 14:19	8/24/2005 7:00	8/24/2005 14:19	7:19	7:19	Fuel gas control valve
September	S	9/15/2005 7:15	9/16/2005 1:40	9/15/2005 7:15	9/16/2005 1:40	18:25	18:25	Non - destructive examination of compressor blades
	S	9/25/2005 5:00	9/25/2005 15:00	9/25/2005 5:00	9/25/2005 15:00	10:00	10:00	Switchyard equipment
October	No Outages > or = 6 Hours							

Report dates of forced in columns headed Actual

Schedule vs Actual

MONTH	MAINTENANCE				HOURS OF DURATION			REASON FOR DEVIATION FROM SCHEDULED MAINTENANCE OR REASON FOR FORCED OUTAGE AS APPROPRIATE	
	Scheduled		Actual		Scheduled	Forced	Actual		
	FROM	TO	FROM	TO					
May	S	5/6/2005 20:06	5/7/2005 16:30	5/6/2005 20:06	5/7/2005 16:30	20:24		20:24	Fuel gas supply header - vent valve
	S	5/12/2005 2:00	5/12/2005 19:00	5/12/2005 2:00	5/12/2005 19:00	17:00		17:00	Compressor blade inspections
June	No Outages > or = 6 Hours								
July	No Outages > or = 6 Hours								
August	No Outages > or = 6 Hours								
September	S	9/18/2005 5:00	9/19/2005 1:30	9/18/2005 5:00	9/19/2005 1:30	20:30		20:30	Non - destructive examination of compressor blades
	S	9/25/2005 5:00	9/25/2005 15:00	9/25/2005 5:00	9/25/2005 15:00	10:00		10:00	Switchyard equipment
October	No Outages > or = 6 Hours								

Louisville Gas & Electric Company
 Trimble County Unit #7
 May 2005 through October 2005

Schedule vs Actual

MONTH	MAINTENANCE				HOURS OF DURATION			REASON FOR DEVIATION FROM SCHEDULED MAINTENANCE OR REASON FOR FORCED OUTAGE AS APPROPRIATE
	Scheduled		Actual		Scheduled	Forced	Actual	
	FROM	TO	FROM	TO				
May	S	5/6/2005 20:00	5/8/2005 8:25	5/6/2005 20:00	5/8/2005 8:25	36:25	36:25	Fuel gas supply header - vent valve
	S	5/25/2005 3:00	5/26/2005 21:00	5/25/2005 3:00	5/26/2005 21:00	42:00	42:00	Compressor blade inspection due to original equipment manufacturer issues
June	No Outages > or = 6 Hours							
July	No Outages > or = 6 Hours							
August	No Outages > or = 6 Hours							
September	S	9/19/2005 1:30	9/19/2005 20:35	9/19/2005 1:30	9/19/2005 20:35	19:05	19:05	Non - destructive examination of compressor blades
	S	9/25/2005 5:00	9/25/2005 15:00	9/25/2005 5:00	9/25/2005 15:00	10:00	10:00	Switchyard equipment
October	F			10/25/2005 8:25	10/26/2005 13:58		29:33	Gas turbine inlet air problems

Report dates of forced in columns headed Actual

Louisville Gas & Electric Company
 Trimble County Unit #8
 May 2005 through October 2005

Schedule vs Actual

MONTH	MAINTENANCE				HOURS OF DURATION			REASON FOR DEVIATION FROM SCHEDULED MAINTENANCE OR REASON FOR FORCED OUTAGE AS APPROPRIATE
	Scheduled		Actual		Scheduled	Forced	Actual	
	FROM	TO	FROM	TO				
May	S	5/6/2005 20:00	5/7/2005 16:30	5/6/2005 20:00	5/7/2005 16:30	20:30	20:30	Fuel gas supply header - vent valve
	S	5/31/2005 3:00	5/31/2005 18:43	5/31/2005 3:00	5/31/2005 18:43	15:43	15:43	Compressor inspection due to original equipment manufacturer fleet issues
June	No Outages > or = 6 Hours							
July	F			7/25/2005 18:51	7/26/2005 2:30		7:39	Main step-up transformer leaking oil
August	No Outages > or = 6 Hours							
September	S	9/16/2005 6:15	9/16/2005 13:20	9/16/2005 6:15	9/16/2005 13:20	7:05	7:05	Switchyard equipment
	S	9/17/2005 5:00	9/18/2005 0:40	9/17/2005 5:00	9/18/2005 0:40	19:40	19:40	Non - destructive examination of compressor blades
	S	9/25/2005 5:00	9/25/2005 15:00	9/25/2005 5:00	9/25/2005 15:00	10:00	10:00	Switchyard equipment
October	F			10/29/2005 5:23	10/29/2005 23:00		17:37	Starting system

Louisville Gas & Electric Company
 Trimble County Unit #9
 May 2005 through October 2005

Schedule vs Actual

MONTH	MAINTENANCE				HOURS OF DURATION			REASON FOR DEVIATION FROM SCHEDULED MAINTENANCE OR REASON FOR FORCED OUTAGE AS APPROPRIATE
	Scheduled		Actual		Scheduled	Forced	Actual	
	FROM	TO	FROM	TO				
May	S	5/6/2005 20:00	5/7/2005 16:30	5/6/2005 20:00	5/7/2005 16:30	20:30	20:30	Fuel gas supply header - vent valve
	S	5/25/2005 3:00	5/25/2005 19:30	5/25/2005 3:00	5/25/2005 19:30	16:30	16:30	Compressor inspection due to original equipment manufacturer fleet issues
June	No Outages > or = 6 Hours							
July	No Outages > or = 6 Hours							
August	No Outages > or = 6 Hours							
September	S	9/16/2005 5:00	9/17/2005 0:01	9/16/2005 5:00	9/17/2005 0:01	19:01	19:01	Non - destructive examination of compressor blades
	S	9/25/2005 5:00	9/25/2005 15:00	9/25/2005 5:00	9/25/2005 15:00	10:00	10:00	Switchyard equipment
October	No Outages > or = 6 Hours							

Report dates of forced in columns headed Actual

Louisville Gas & Electric Company
 Trimble County Unit #10
 May 2005 through October 2005

Schedule vs Actual

MONTH	MAINTENANCE				HOURS OF DURATION			REASON FOR DEVIATION FROM SCHEDULED MAINTENANCE OR REASON FOR FORCED OUTAGE AS APPROPRIATE
	Scheduled		Actual		Scheduled	Forced	Actual	
	FROM	TO	FROM	TO				
May	S	5/6/2005 20:00	5/7/2005 16:30	5/6/2005 20:00	5/7/2005 16:30	20:30	20:30	Fuel gas supply header - vent valve
	S	5/31/2005 3:00	5/31/2005 18:43	5/31/2005 3:00	5/31/2005 18:43	15:43	15:43	Compressor inspection due to original equipment manufacturer fleet issues
June	No Outages > or = 6 Hours							
July	No Outages > or = 6 Hours							
August	No Outages > or = 6 Hours							
September	F			9/10/2005 21:00	9/19/2005 9:30	204:30		Generator circuit breaker
	S	9/25/2005 5:00	9/25/2005 15:00	9/25/2005 5:00	9/25/2005 15:00	10:00	10:00	Switchyard equipment
October	No Outages > or = 6 Hours							

Louisville Gas & Electric Company
 Waterside Unit #7
 May 2005 through October 2005

Schedule vs Actual

MONTH	MAINTENANCE				HOURS OF DURATION			REASON FOR DEVIATION FROM SCHEDULED MAINTENANCE OR REASON FOR FORCED OUTAGE AS APPROPRIATE
	Scheduled		Actual		Scheduled	Forced	Actual	
	FROM	TO	FROM	TO				
May	No Outages > or = 6 Hours							
June	F		6/8/2005 8:50	6/9/2005 2:00	17:10		Lack of fuel - gas pressure issues	
July	No Outages > or = 6 Hours							
August	No Outages > or = 6 Hours							
September	No Outages > or = 6 Hours							
October	S	10/26/2005 19:00	10/28/2005 3:00	10/26/2005 19:00	10/28/2005 3:00	32:00	32:00	Gas line maintenance

Report dates of forced outage in columns headed Actual

Louisville Gas & Electric Company
 Waterside Unit #8
 May 2005 through October 2005

Schedule vs Actual

MONTH	MAINTENANCE				HOURS OF DURATION			REASON FOR DEVIATION FROM SCHEDULED MAINTENANCE OR REASON FOR FORCED OUTAGE AS APPROPRIATE
	Scheduled		Actual		Scheduled	Forced	Actual	
	FROM	TO	FROM	TO				
May	No Outages > or = 6 Hours							
June	F		6/8/2005 8:50	6/9/2005 2:00	17:10			Lack of fuel - gas pressure issues
July	No Outages > or = 6 Hours							
August	No Outages > or = 6 Hours							
September	No Outages > or = 6 Hours							
October	S	10/26/2005 19:00	10/28/2005 3:00	10/26/2005 19:00	10/28/2005 3:00	32:00		32:00 Gas line maintenance

Report dates of forced outage in columns headed Actual

Louisville Gas & Electric Company
 Zorn Unit #1
 May 2005 through October 2005

Schedule vs Actual

MONTH	MAINTENANCE				HOURS OF DURATION			REASON FOR DEVIATION FROM SCHEDULED MAINTENANCE OR REASON FOR FORCED OUTAGE AS APPROPRIATE
	Scheduled		Actual		Scheduled	Forced	Actual	
	FROM	TO	FROM	TO				
May	No Outages > or = 6 hours							
June	F		6/8/2005 8:50	6/9/2005 2:00	17:10			Lack of fuel - gas pressure issues
July	No Outages > or = 6 hours							
August	No Outages > or = 6 hours							
September	No Outages > or = 6 hours							
October	F		10/3/2005 17:15	10/18/2005 12:37	355:22			Diesel starter problems
	S	10/26/2005 19:00	10/28/2005 3:00	10/26/2005 19:00	32:00		32:00	Gas line maintenance

Report dates of forced outage in columns headed Actual

LOUISVILLE GAS AND ELECTRIC COMPANY

**Response to Information Requested in Appendix A to
Commission's Order Dated December 27, 2005**

Case No. 2005-00497

Question No. 6

Witness: Mike Dotson

- Q-6. List all existing fuel contracts categorized as long-term (i.e., more than 1 year in length). Provide the following information for each contract:
- a. Supplier's name and address.
 - b. Name and location of production facility.
 - c. Date when contract executed.
 - d. Duration of contract.
 - e. Date(s) of each contract revision, modification or amendment.
 - f. Annual tonnage requirements.
 - g. Actual annual tonnage received since the contract's inception.
 - h. Percent of annual requirements received during the contract's term.
 - i. Base price.
 - j. Total amount of price escalations to date.
 - k. Current price paid for coal under the contract (i ÷ j).
- A-6. Please see attached the attached sheets.

A. NAME/ADDRESS: Black Beauty Coal Company / LGE02012
7100 Eagle Crest Blvd., Suite 100
Evansville, Indiana 47715

B. PRODUCTION FACILITY:
OPERATOR Black Beauty Coal Company
MINES Somerville North and Central
LOCATION Gibson County, Indiana

C. CONTRACT EXECUTED DATE: October 26, 2001

D. CONTRACT DURATION: January 1, 2002 - December 31, 2007

E. CONTRACT AMENDMENTS: Amendment No. 1 effective January 1, 2004
Amending tonnage, term, quality and price.

F. ANNUAL TONNAGE REQUIREMENTS:

2002	250,000 tons
2003	500,000 tons
2004	1,000,000 tons
2005	850,000 tons
2006	500,000 tons
2007	500,000 tons

G. ACTUAL TONNAGE RECEIVED:

2002	208,841 tons
2003	521,601 tons
2004	990,643 tons
2005	662,408 tons (through 10/31/05)

H. PERCENT OF ANNUAL REQUIREMENTS:

2002	83.5%
2003	104.3%
2004	99.1%
2005	77.9% (through 4/30/05)

I. BASE PRICE:

Quality One:

2002	95.91 cents/MMBtu (FOBRailcar) 114.1 cents/MMBtu (FOB Barge)
2003	95.91 cents/MMBtu (FOB Railcar) 114.1 cents/MMBtu (FOB Barge)
2004	96.59 cents/MMBtu (FOB Railcar) 114.77 cents/MMBtu (FOB Barge)
2005	96.59 cents/MMBtu (FOB Railcar) 114.77 cents/MMBtu (FOB Barge)

2006 To Be Determined
2007 To Be Determined

Quality Two:

2002 109.1 cents/MMBtu (FOB Barge)
2003 109.1 cents/MMBtu (FOB Barge)
2004 105.68 cents/MMBtu (FOB Barge)
2005 105.68 cents/MMBtu (FOB Barge)
2006 To Be Determined
2007 To Be Determined

Quality Three:

2002 106.82 cents/MMBtu (FOB Barge)
2003 106.82 cents/MMBtu (FOB Barge)

J. ESCALATIONS TO DATE:

None

K. CURRENT CONTRACT PRICE:

Quality One:

96.59 cents/MMBtu (FOB Railcar)
114.77 cents/MMBtu (FOB Barge)

Quality Two:

105.68 cents/MMBtu (FOB Barge)

A. NAME/ADDRESS: Charolais Coal, No. 1, LLC / LGE05011
Highway 862, P.O. Box 1999
Madisonville, Kentucky 42431

B. PRODUCTION FACILITY:

OPERATOR Charolais Coal, No. 1, LLC
MINES Vogue West and Rock Crusher Mines
LOCATION Muhlenberg County, Kentucky

MINES Old Sunrise Mine
LOCATION Hopkins County, Kentucky

MINES Sacramento Mine
LOCATION McLean County, Kentucky

C. CONTRACT EXECUTED DATE: November 30, 2004

D. CONTRACT DURATION: January 1, 2005 - December 31, 2008

E. CONTRACT AMENDMENTS: None

F. ANNUAL TONNAGE REQUIREMENTS:

2005	1,000,000 tons
2006	1,000,000 tons
2007	To Be Determined
2008	To Be Determined

G. ACTUAL TONNAGE RECEIVED:

2005	672,978 tons (through 10/31/05)
------	---------------------------------

H. PERCENT OF ANNUAL REQUIREMENTS:

2005	67.31 % (through 10/31/05)
------	----------------------------

I. BASE PRICE (FOB Barge)

2005	125.00 cents/MMBtu
2006	128.74 cents/MMBtu
2007	To Be Determined
2008	To Be Determined

J. ESCALATIONS TO DATE: None

I. CURRENT CONTRACT PRICE: 125.00 cents/MMBtu

A. NAME/ADDRESS: Consol Energy / Contract No. LGE00010
1800 Washington Road
Pittsburgh, Pennsylvania 15241

B. PRODUCTION FACILITY:
OPERATOR Consolidated Coal Company
MINE McElroy and Shoemaker
LOCATION Marshall County, West Virginia

C. CONTRACT EXECUTED DATE: May 12, 2000

D. CONTRACT DURATION: January 1, 2000 - December 31, 2004

E. CONTRACT AMENDMENTS: Amendment No.1 effective January 1, 2002
amending the term of the contract, pricing,
base quantity tonnage and other terms and
conditions.
Amendment No. 2 effective January 1, 2003
amending the term of the contract, pricing,
base quantity tonnage and other terms and
conditions.

F. ANNUAL TONNAGE REQUIREMENTS:

2000	1,500,000 tons
2001	1,500,000 tons
2002	800,000 tons
2003	200,000 tons
2004	1,000,000 tons

G. ACTUAL TONNAGE RECEIVED:

2000	1,585,678 ton
2001	1,966,650 tons
2002	718,619 tons
2003	230,041 tons
2004	884,555 tons
2005	121,401 tons (through 10/31/05)

H. PERCENT OF ANNUAL REQUIREMENTS

2000	88.1 %
2001	109.3 %
2002	89.8 %
2003	115.0 %
2004	88.5 %
2005	Carryover

I. BASE PRICE (FOB Barge):	2000	74.38 cents/MMBtu
	2001	75.21 cents/MMBtu
	2002	75.21 cents/MMBtu for 2001 carryover
	2002	96.38 cents/MMBtu for new tons
	2003	96.31 cents/MMBtu
	2004	96.31 cents/MMBtu
J. ESCALATIONS TO DATE:		None
K. CURRENT CONTRACT PRICE:		96.31 cents/MMBtu

A. NAME/ADDRESS: Consol Energy / Contract No. LGE05012
1800 Washington Road
Pittsburgh, Pennsylvania 15241

B. PRODUCTION FACILITY:
OPERATOR Consolidated Coal Company
MINE McElroy and Shoemaker
LOCATION Marshall County, West Virginia

C. CONTRACT EXECUTED DATE: December 21, 2004

D. CONTRACT DURATION: January 1, 2005 - December 31, 2008

E. CONTRACT AMENDMENTS: None

F. ANNUAL TONNAGE REQUIREMENTS:

2005	841,500 tons (Reflects force majeure tonnage of 33,500 tons)
2006	875,000 tons
2007	1,000,000 tons
2008	1,000,000 tons

G. ACTUAL TONNAGE RECEIVED:

2005	668,390 tons (through 10/31/05)
------	---------------------------------

H. PERCENT OF ANNUAL REQUIREMENTS

2005	79.4% (through 10/31/05)
------	--------------------------

I. BASE PRICE (FOB Barge):

Quality A

2005	121.926 cents/MMBtu
2006	124.385 cents/MMBtu
2007	126.844 cents/MMBtu
2008	129.385 cents/MMBtu

Quality B

2005	119.877 cents/MMBtu
2006	122.295 cents/MMBtu
2007	124.713 cents/MMBtu
2008	127.213 cents/MMBtu

J. ESCALATIONS TO DATE: None

K. CURRENT CONTRACT PRICE:	Quality A	121.926 cents/MMBtu
	Quality B	119.877 cents/MMBtu

A. NAME/ADDRESS: Hopkins County Coal, LLC / LGE02014
1717 South Boulder Avenue
Tulsa, Oklahoma 74119-4886

B. PRODUCTION FACILITY:
OPERATOR Warrior Coal, LLC and Webster County
Coal, LLC
MINE Seller's Mines
LOCATION Western Kentucky

C. CONTRACT EXECUTED DATE: December 21, 2002

D. CONTRACT DURATION: January 1, 2002 - December 31, 2007

E. CONTRACT AMENDMENTS: Amendment No. 1 effective October 1, 2003
adding an additional source
Amendment No. 2 effective January 1, 2004
amending tonnage, term, quality and price.

F. ANNUAL TONNAGE REQUIREMENTS:

2002	Up to 2,250,000 tons (Total with Synfuel Solutions Operating Contract)
2003	Up to 2,250,000 tons (Total with Synfuel Solutions Operating Contract)
2004	Up to 2,250,000 tons (Total with Synfuel Solutions Operating Contract)
2005	Up to 2,500,000 tons (Total with Synfuel Solutions Operating Contract)
2006	Up to 2,250,000 tons (Total with Synfuel Solutions Operating Contract)
2007	Up to 2,250,000 tons (Total with Synfuel Solutions Operating Contract)

G. ACTUAL TONNAGE RECEIVED:

2002	306,896 tons
2003	990,245 tons
2004	613,539 tons
2005	635,384 tons (through 10/31/05)

H. PERCENT OF ANNUAL REQUIREMENTS:	2002	100% Coal portion of Coal/Coal Synfuel Contract
	2003	100% Coal portion of Coal/Coal Synfuel Contract
	2004	100% Coal portion of Coal/Coal Synfuel Contract
	2005	100% (through 10/31/05) of Coal portion of Coal/Coal Synfuel Contract
I. BASE PRICE (FOB Railcar):	2002	Quality 1 - 106.0 cents/MMBtu Quality 2 - 103.0 cents/MMBtu
	2003	Quality 1 - 106.0 cents/MMBtu Quality 2 - 103.0 cents/MMBtu
	2004	Quality 1 - 99.0 cents/MMBtu
	2005	Quality 1 - 100.0 cents/MMBtu
J. ESCALATIONS TO DATE:		None
K. CURRENT CONTRACT PRICE:		100.0 cents/MMBtu

A. NAME/ADDRESS: Marietta Coal Company / LGE05010
629220 Georgetown Road
Cambridge, Ohio 43725

B. PRODUCTION FACILITY:
OPERATOR Marietta Coal Company
MINE Belmont Mine
LOCATION Belmont and Jefferson Counties, Ohio

MINE West Virginia Strip Mine
LOCATION Ohio County, West Virginia

C. CONTRACT EXECUTED DATE: November 15, 2004

D. CONTRACT DURATION: October 1, 2004 – December 31, 2008

E. CONTRACT AMENDMENTS: Amendment No. 1 effective June 15, 2005
modifying quality and price for two months

F. ANNUAL TONNAGE REQUIREMENTS:

2004	30,000 tons
2005	200,000 tons
2006	100,000 tons
2007	150,000 tons
2008	150,000 tons

G. ACTUAL TONNAGE RECEIVED:

2004	13,235 tons
2005	57,452 tons (through 10/31/05)

H. PERCENT OF ANNUAL REQUIREMENTS:

2004	44.1%
2005	28.7% (through 10/31/05)

I. BASE PRICE (FOB Barge):

2004	119.40 cents/MBtu
2005	119.40 cents/MMBtu
2006	121.64 cents/MMBtu
2007	123.88 cents/MMBtu
2008	126.12 cents/MMBtu

J. ESCALATIONS TO DATE: None

K. CURRENT CONTRACT PRICE: 119.40 cents/MMBtu

A. NAME/ADDRESS: Peabody COALSALES / LGE02011
701 Market Street, Suite 830
St. Louis, Missouri 63101-1826

B. PRODUCTION FACILITY:
OPERATOR Patriot Coal and Ohio County Coal
MINE Patriot and Freedom Mines
LOCATION Henderson County, Kentucky

OPERATOR Highland Mining Company
MINE Highland Mining Complex
LOCATION Union County, Kentucky

C. CONTRACT EXECUTED DATE: January 10, 2002

D. CONTRACT DURATION: January 1, 2002 - December 31, 2004

E. CONTRACT AMENDMENTS: Amendment No. 1, effective June 1, 2002
deferring tonnage from 2002 into 2003
Amendment No. 2 effective January 1, 2003
adding an additional coal quality.
Amendment No. 3 effective September 15,
2003 adding an additional coal quality.
Amendment No. 4, effective July 14, 2004
adding an additional loading point.
Amendment No. 5, effective October 6,
2005 modifying term and quantity
Amendment No. 6, effective October 6,
2005 modifying term and quantity

F. ANNUAL TONNAGE REQUIREMENTS:

2002	600,000 tons
2003	1,000,000 tons
2004	660,000 tons
2005	135,000 tons

G. ACTUAL TONNAGE RECEIVED:

2002	604,407 tons
2003	767,257 tons
2004	873,943 tons
2005	54,709 (through 10/31/05)

H. PERCENT OF ANNUAL REQUIREMENTS:

2002	100.7%
2003	76.7%

	2004	132.4%
	2005	Carryover
I. BASE PRICE (FOB Barge):	2002	112.24 cents/MMBtu – Quality A
	2003	112.24 cents/MMBtu – Quality A (first 150,000 tons) 113.51 cents/MMBtu – Quality A (remainder of tonnage) 90.0 cents/MMBtu – Quality B 105.57 cents/MMBtu – Coal Synfuel
	2004 & 2005	116.80 cents/MMBtu – Quality A (Load at Gibraltar) 114.17 cents/MMBtu – Quality A (Load on Green River) 91.0 cents/MMBtu – Quality B
J. ESCALATIONS TO DATE:		None
K. CURRENT CONTRACT PRICE:		116.80 cents/MMBtu – Quality A (Load at Gibraltar) 114.17 cents/MMBtu – Quality A (Load on Green River) 91.0 cents/MMBtu – Quality B

A. NAME/ADDRESS:	Peabody COALSALES / LGE03010 701 Market Street, Suite 830 St. Louis, Missouri 63101-1826
B. PRODUCTION FACILITY:	
OPERATOR	Patriot Coal Company, LP
MINE	Patriot
LOCATION	Henderson County, Kentucky
OPERATOR	Ohio County Coal Company
MINE	Freedom
LOCATION	Henderson County, Kentucky
C. CONTRACT EXECUTED DATE:	December 19, 2002
D. CONTRACT DURATION:	January 1, 2003 - December 31, 2005
E. CONTRACT AMENDMENTS:	None
F. ANNUAL TONNAGE REQUIREMENTS:	2003 1,000,000 tons 2004 1,000,000 tons 2005 1,000,000 tons
G. ACTUAL TONNAGE RECEIVED:	2003 929,710 tons 2004 1,055,758 tons 2005 752,958 tons (through 10/31/05)
H. PERCENT OF ANNUAL REQUIREMENTS:	2003 92.9% 2004 105.6% 2005 75.3% (through 10/31/05)
I. BASE PRICE (FOB Barge):	2003 Patriot 88.0 cents/MMBtu Camp 87.74 cents/MMBtu Gibraltar 85.39 cents/MMBtu 2004 Patriot 89.0 cents/MMBtu Camp 88.74 cents/MMBtu Gibraltar 86.39 cents/MMBtu 2005 Patriot 90.0 cents/MMBtu Camp 89.74 cents/MMBtu Gibraltar 87.39 cents/MMBtu
J. ESCALATIONS TO DATE:	None

K. CURRENT CONTRACT PRICE:

Patriot	90.0 cents/MMBtu
Camp	89.74 cents/MMBtu
Gibraltar	87.39 cents/MMBtu

A. NAME/ADDRESS: Sands Hill Coal Company / LGE05014
38701 State Road 160
Hamden, Ohio 45634

B. PRODUCTION FACILITY:
OPERATOR Sands Hill Coal Company
MINE Sands Hill Mine
LOCATION Jackson and Vinton Counties, Ohio

C. CONTRACT EXECUTED DATE: March 8, 2005

D. CONTRACT DURATION: January 1, 2005 – February 28, 2007

E. CONTRACT AMENDMENTS: None

F. ANNUAL TONNAGE REQUIREMENTS:

2005	210,000 tons
2006	240,000 tons
2007	30,000 tons

G. ACTUAL TONNAGE RECEIVED:

2005	203,371 tons (through 10/31/05)
------	---------------------------------

H. PERCENT OF ANNUAL REQUIREMENTS:

2005	96.8% (through 10/31/05)
------	--------------------------

I. BASE PRICE (FOB Barge):

2005	144.565 cents/MMBtu
2006	144.565 cents/MMBtu (first 30,000 tons shipped during 2006)
2006	147.826 cents/MMBtu (remainder of the tonnage shipped during 2006)
2007	147.826 cents/MMBtu

J. ESCALATIONS TO DATE: None

K. CURRENT CONTRACT PRICE: 144.565 cents/MMBtu

A. NAME/ADDRESS:	Smoky Mountain Coal Corp. / LGE02013 9725 Cogdill Road, Suite 203 Knoxville, Tennessee 42413
B. PRODUCTION FACILITY:	
OPERATOR	KMMC Mining
MINE	Vision #9
LOCATION	Webster County, Kentucky
OPERATOR	Allied Reserves, Inc.
MINE	Onton Reserve
LOCATION	Webster County, Kentucky
C. CONTRACT EXECUTED DATE:	February 27, 2002
D. CONTRACT DURATION:	January 1, 2002 - December 31, 2010
E. CONTRACT AMENDMENTS:	Amendment No. 1, effective January 1, 2004 amending term, quantity, quality, and price.
F. ANNUAL TONNAGE REQUIREMENTS:	2002 200,000 tons 2003 250,000 tons 2004 400,000 tons 2005 400,000 tons 2006 400,000 tons 2007 - 2010 To Be Determined
G. ACTUAL TONNAGE RECEIVED:	2002 332,115 tons 2003 275,535 tons 2004 314,929 tons 2005 229,596 tons (through 10/31/05)
H. PERCENT OF ANNUAL REQUIREMENTS:	2002 166.1 % 2003 110.2 % 2004 78.7 % 2005 57.4 % (through 10/31/05)
I. BASE PRICE (FOB Barge):	<u>Quality A</u> 2002 / 2003 115.4 cents/MMBtu 2004 119.4 cents/MMBtu

Quality B

2002 / 2003 112.3 cents/MMBtu
2004 116.1 cents/MMBtu

Quality C

2004 102.0 cents/MMBtu
2005 106.0 cents/MMBtu
2006 107.7 cents/MMBtu

Quality D

2004 99.5 cents/MMBtu
2005 103.0 cents/MMBtu
2006 105.0 cents/MMBtu

J. ESCALATIONS TO DATE:

None

K. CURRENT CONTRACT PRICE:

Quality C

106.0 cents/MMBtu

Quality D

103.0 cents/MMBtu

A. NAME/ADDRESS:	Synfuel Sol. Operating, LLC / LGE02015 C/o The Goldman Sachs Group 85 Broad Street New York, New York 10004
B. PRODUCTION FACILITY: OPERATOR MINE LOCATION	Synfuel Solutions Operating, LLC Warrior Hopkins County, Kentucky
C. CONTRACT EXECUTED DATE:	December 28, 2001
D. CONTRACT DURATION:	January 1, 2002 - December 31, 2007
E. CONTRACT AMENDMENTS:	Amendment No. 1 effective January 1, 2004 amending term, quantity, and price.
F. ANNUAL TONNAGE REQUIREMENTS:	2002 Up to 2,250,000 tons (Total with Hopkins County Coal Contract) 2003 Up to 2,250,000 tons (Total with Hopkins County Coal Contract) 2004 Up to 2,250,000 tons (Total with Hopkins County Coal Contract) 2005 Up to 2,500,000 tons (Total with Hopkins County Coal Contract) 2006 Up to 2,250,000 tons (Total with Hopkins County Coal Contract) 2007 Up to 2,250,000 tons (Total with Hopkins County Coal Contract)
G. ACTUAL TONNAGE RECEIVED:	2002 1,787,142 tons 2003 1,370,692 tons 2004 1,657,818 tons 2005 1,445,393 tons (through 10/31/05)
H. PERCENT OF ANNUAL REQUIREMENTS:	2002 79.4% 2003 60.9% 2004 73.7% 2005 57.8% (through 10/31/05)
I. BASE PRICE (FOB Railcar):	2002 Quality 1 - 101.0 cents/MBtu Quality 2 - 99.0 cents/MMBtu

2003 Quality 1 – 101.0 cents/MMBtu
Quality 2 – 99.0 cents/MMBtu
2004 Quality 1 – 94.0 cents/MMBtu
2005 Quality 1 – 95.0 cents/MMBtu

J. ESCALATIONS TO DATE: None

K. CURRENT CONTRACT PRICE: Quality 1 – 95.0 cents/MMBtu

LOUISVILLE GAS AND ELECTRIC COMPANY

**Response to Information Requested in Appendix A to
Commission's Order Dated December 27, 2005**

Case No. 2005-00497

Question No. 7

Witness: Mike Dotson

- Q-7. a. Does LG&E regularly compare the price of its coal purchases with those paid by other electric utilities?
- b. If yes, state:
- (1) How LG&E's prices compare with those of other utilities for the review period.
- (2) The utilities that are included in this comparison and their location.
- A-7. a. Yes
- b. Please see the attached sheet.

**RESPONSE TO PSC ORDER
DATED: DECEMBER 27, 2005
PSC CASE NO. 2005-00497**

UTILITY	SEP 04 - AUG	PLANT LOCATIONS
	05 ¢/MMBTU	
Ameren Energy Resources	127.11	Illinois
AmerenEnergy Generating Co.	121.16	Illinois
Appalachian Power Co.	162.60	Virginia, West Virginia
Cardinal Operating Co.	150.56	Ohio
Cincinnati Gas & Electric Co.	146.05	Kentucky, Ohio
Columbus Southern Power Co.	147.35	Ohio
Dayton Power & Light Co.	172.87	Ohio
East Kentucky Power Coop, Inc.	187.65	Kentucky
Electric Energy, Inc.	96.64	Illinois
Hoosier Energy Rural Electric Coop, Inc	112.61	Indiana
Indiana Michigan Power Co.	146.84	Indiana
Indiana-Kentucky Electric Corp.	143.45	Indiana
Indianapolis Power & Light Co.	110.59	Indiana
Kentucky Power Co.	189.75	Kentucky
Kentucky Utilities Co.	173.77	Kentucky
Louisville Gas & Electric Co.	127.33	Kentucky
Monongahela Power Co.	134.88	West Virginia
Northern Indiana Public Service Co.	143.44	Indiana
Ohio Power Co.	126.28	Ohio, West Virginia
Ohio Valley Electric Corp.	163.74	Ohio
Owensboro Municipal Utilities	95.90	Kentucky
PSI Energy, Inc.	131.67	Indiana
Southern Indiana Gas & Electric Co.	128.51	Indiana
Tennessee Valley Authority	140.86	Alabama, Kentucky, Tennessee

Louisville Gas & Electric ranked 8th for the 12-month period.

LOUISVILLE GAS AND ELECTRIC COMPANY

**Response to Information Requested in Appendix A to
Commission's Order Dated December 27, 2005**

Case No. 2005-00497

Question No. 8

Witness: Mike Dotson

Q-8. State the percentage of LG&E's coal, as of the date of this Order, that is delivered by:

a. rail.

b. truck.

c. barge.

A-8. a. 41.07%

b. 0.0%

c. 58.93%

LOUISVILLE GAS AND ELECTRIC COMPANY

**Response to Information Requested in Appendix A to
Commission's Order Dated December 27, 2005**

Case No. 2005-00497

Question No. 9

Witness: Mike Dotson

- Q-9. a. State LG&E's coal inventory level in tons and in number of days' supply as of October 31, 2005.
- b. Describe the criteria used to determine number of days' supply.
- c. Compare LG&E's coal inventory as of October 31, 2005 to its inventory target for that date.
- d. If actual coal inventory exceeds inventory target by 10 days' supply, state the reasons for excessive inventory.
- e. (1) Does LG&E expect any significant changes in its current coal inventory target within the next 12 months?
- (2) If yes, state the expected change and the reasons for this change.

A-9. a. As of October 31, 2005: 1,112,340 tons; 51 days

b. PSC Formula

$$\text{Days Burn} = \frac{\text{Current inventory tons}}{\text{Preceding 12 months burn (tons)}} \times 365 \text{ Days}$$

- c. Target: 35-50 Days
- d. The actual coal inventory does not exceed the inventory target by more than ten days.
- e. (1) No.
- (2) Not applicable.

LOUISVILLE GAS AND ELECTRIC COMPANY

**Response to Information Requested in Appendix A to
Commission's Order Dated December 27, 2005**

Case No. 2005-00497

Question No. 10

Witness: Mike Dotson

- Q-10. a. Has LG&E audited any of its coal contracts during the period from May 1, 2005 through October 31, 2005?
- b. If yes, for each audited contract:
- (1) Identify the contract.
 - (2) Identify the auditor.
 - (3) State the results of the audit.
 - (4) Describe the actions that LG&E took as a result of the audit.
- A-10. a. No. LG&E has not conducted any financial audits of coal companies. LG&E's current contracts are fixed price contracts and are not subject to price escalations that would require recurring audits. LG&E's Manager Fuels Technical Services and Mining Engineer do conduct scheduled on-site reviews and inspections of the mining operations and sampling systems of each vendor up to twice a year and may conduct unscheduled visits. Additionally, LG&E employees may visit a vendor as needed to address problems and issues at any time.
- b. Not applicable.

LOUISVILLE GAS AND ELECTRIC COMPANY

**Response to Information Requested in Appendix A to
Commission's Order Dated December 27, 2005**

Case No. 2005-00497

Question No. 11

Witness: Robert M. Conroy

Q-11. a. Has LG&E received any customer complaints regarding its FAC during the period from May 1, 2005 through October 31, 2005?

b. If yes, for each complaint, state:

(1) The nature of the complaint.

(2) LG&E's response.

A-11. a. No.

b. Not applicable.

LOUISVILLE GAS AND ELECTRIC COMPANY

**Response to Information Requested in Appendix A to
Commission's Order Dated December 27, 2005**

Case No. 2005-00497

Question No. 12

Witness: Mike Dotson

- Q-12. a. Is LG&E currently involved in any litigation with its current or former coal suppliers?
- b. If yes, for each litigation:
- (1) Identify the coal supplier.
 - (2) Identify the coal contract involved.
 - (3) State the potential liability or recovery to LG&E.
 - (4) List the issues presented.
 - (5) Provide a copy of the complaint or other legal pleading that initiated the litigation and any answer(s) or counterclaim(s). If a copy has previously been filed with the Commission, provide the date on which it was filed.
- c. State the current status of all litigation with coal suppliers.

A-12. Yes

Coal Supply Agreement – Kindill Mining

- b. (1) Kindill Mining: Kindill Mining (an affiliate of Horizon Natural Resources successor of AEI Coal Sales Company, Inc.) filed for Chapter 11 bankruptcy protection on August 25, 2003, LG&E filed a Proof of Claim on October 18, 2004.
- (2) Coal Supply Agreement LG&E 97-211-026 dated July 1, 1997.
- (3) LG&E seeks to recover cover damages sustained by LG&E arising from the rejection of the Contract.

- (4) The Contract was rejected by the Debtor pursuant to an Order rejecting certain executory contracts entered on September 30, 2004.
 - (5) A copy of the Proof of Claim filed in the United States Bankruptcy Court in the Eastern District of Kentucky was filed with the Commission as part of the hearing to Case No. 2004-00466.
- c. A liquidating plan was approved and the claims process is ongoing.

LOUISVILLE GAS AND ELECTRIC COMPANY

**Response to Information Requested in Appendix A to
Commission's Order Dated December 27, 2005**

Case No. 2005-00497

Question No. 13

Witness: Mike Dotson

Q-13. a. During the period from May 1, 2005 through October 31, 2005, have there been any changes to LG&E's written policies and procedures regarding its fuel procurement?

b. If yes:

(1) Describe the changes.

(2) Provide these written policies and procedures as changed.

(3) State the date the changes were made.

(4) Explain why the changes were made.

A-13. a. No. The Fuel Procurement Policies and Procedures were revised in light of the 2004 Fuel Management Audit recommendations and a complete copy was filed with Commission per letter dated October 6, 2005 in Response to the Commission Staff Post-Hearing Data Request dated September 22, 2005 in Case No. 2005-00243.

b. Not applicable.

LOUISVILLE GAS AND ELECTRIC COMPANY

**Response to Information Requested in Appendix A to
Commission's Order Dated December 27, 2005**

Case No. 2005-00497

Question No. 14

Witness: Mike Dotson

Q-14. a. Is LG&E aware of any violations of its policies and procedures regarding fuel procurement that occurred prior to or during the period from May 1, 2005 through October 31, 2005?

b. If yes, for each violation:

(1) Describe the violation.

(2) Describe the action(s) that LG&E took upon discovering the violation.

(3) Identify the person(s) who committed the violation.

A-14. a. No.

b. Not applicable.

LOUISVILLE GAS AND ELECTRIC COMPANY

**Response to Information Requested in Appendix A to
Commission's Order Dated December 27, 2005**

Case No. 2005-00497

Question No. 15

Witness: Mike Dotson

Q-15. Identify all changes that occurred during the period from May 1, 2005 through October 31, 2005 in the organizational structure and personnel of the departments or divisions that are responsible for LG&E's fuel procurement activities.

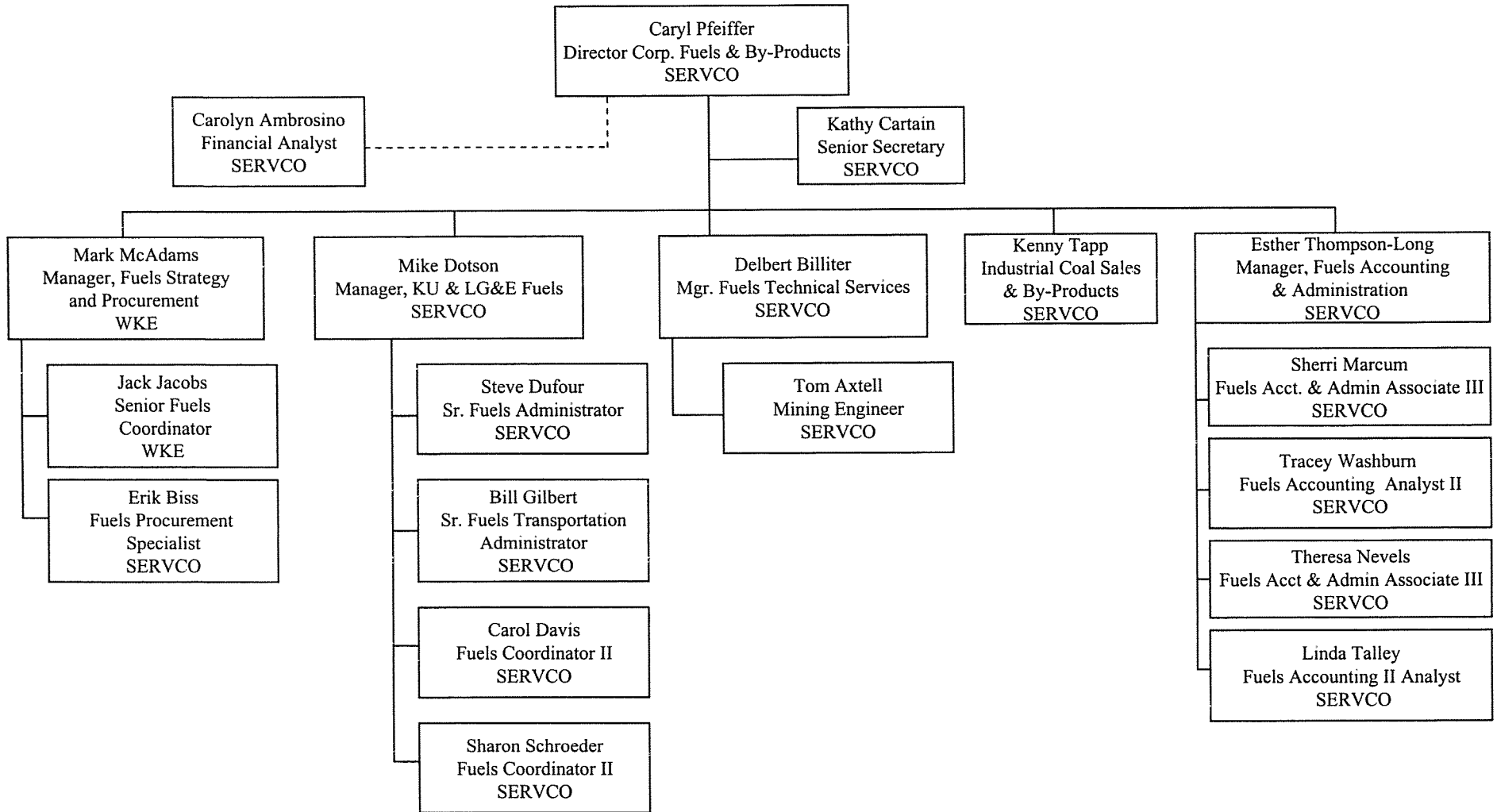
A-15. The following change occurred in the Fuels Department during the period under review.

With the promotion of Delbert Billiter from Mining Engineer to Manager, Fuels Technical Services effective March 14, 2005, Tom Axtell joined the Fuels Department on August 28, 2005 as Mining Engineer.

Please find attached a copy of the August 28, 2005 organizational chart for the Corporate Fuels and By-Products Department.

Corporate Fuels and By-Products

August 28, 2005



LOUISVILLE GAS AND ELECTRIC COMPANY

**Response to Information Requested in Appendix A to
Commission's Order Dated December 27, 2005**

Case No. 2005-00497

Question No. 16

Witness: B. Keith Yocum

Q-16. a. Identify all changes that LG&E has made during the period under review to its maintenance and operation practices that also affect fuel usage at LG&E's generation facilities.

b. Describe the impact of these changes on LG&E's fuel usage.

A-16. a. None.

b. Not applicable.

LOUISVILLE GAS AND ELECTRIC COMPANY

**Response to Information Requested in Appendix A to
Commission's Order Dated December 27, 2005**

Case No. 2005-00497

Question No. 17

Witness: Mike Dotson

Q-17. List each written coal supply solicitation issued during the period from May 1, 2005 to October 31, 2005.

- a. For each solicitation, provide the date of the solicitation, the type of solicitation (contract or spot), the quantities solicited, a general description of the quality of coal solicited, the time period over which deliveries were requested, and the generating unit(s) for which the coal was intended.
- b. For each solicitation, state the number of vendors to whom the solicitation was sent, the number of vendors who responded, and the selected vendor. Provide the bid tabulation sheet or corresponding document that ranked the proposals. (This document should identify all vendors who made offers.) State the reasons for each selection.

A-17. In Case No. 2005-00243, a review of LG&E's FAC for the period November 1, 2004 though April 30, 2005, the final selection of the vendors who responded to solicitations dated December 20, 2004 and March 25, 2005 was not complete at the time the data responses were filed. The requested information for selected vendors is provided below.

SOLICITATION #1

- a. Date: December 20, 2004
Contract/Spot: Contract and Spot
Quantities: No minimum or maximum specified
Quality: Suitable for LG&E power plants and KU's Ghent power plant
Period: Up to ten years
Generating Units: All LG&E coal fired units, KU's Ghent Unit #1 and KU's Green River Station
- b. Date: December 20, 2004
Number of vendors receiving bids: 170
Number of vendor responses: 13

Selected vendors: Alliance Coal, LLC, LGE06010

The vendor selected was based upon the lowest evaluated delivered cost.

The bid analysis information is confidential and proprietary information and is being filed with the Commission under seal pursuant to a Petition for Confidential Protection.

SOLICIATION #2

- a. Date: March 21, 2005
Contract/Spot: Contract and Spot
Quantities: No minimum or maximum specified
Quality: Suitable for LG&E power plants and KU's Ghent power plant
Period: Up to ten years
Generating Units: All LG&E coal fired units and KU's Ghent Unit #1
- b. March 21, 2005
Number of vendors receiving bids: 170
Number of vendor responses: 14
Selected vendors: COALSALES, LLC, LGE06012

The vendor selected was based upon the lowest evaluated delivered cost.

The bid analysis information is confidential and proprietary information and is being filed with the Commission under seal pursuant to a Petition for Confidential Protection.

LOUISVILLE GAS AND ELECTRIC COMPANY

**Response to Information Requested in Appendix A to
Commission's Order Dated December 27, 2005**

Case No. 2005-00497

Question No. 18

Witness: Mike Dotson

Q-18. List each oral coal supply solicitation issued during the period from May 1, 2005 to October 31, 2005.

- a. For each solicitation, state why the solicitation was not written, the date(s) of the solicitation, the quantities solicited, a general description of the quality of coal solicited, the time period over which deliveries were requested, and the generating unit(s) for which the coal was intended.
- b. For each solicitation, identify all vendors solicited and the vendor selected. Provide the tabulation sheet or other document that ranks the proposals. (This document should identify all vendors who made offers.) State the reasons for each selection.

A-18. a. None.

b. Not applicable.

LOUISVILLE GAS AND ELECTRIC COMPANY

**Response to Information Requested in Appendix A to
Commission's Order Dated December 27, 2005**

Case No. 2005-00497

Question No. 19

Witness: B. Keith Yocum

- Q-19. a. List all intersystem sales during the period under review in which LG&E used a third party's transmission system.
- b. For each sale listed above:
- (1) Describe how LG&E addressed for FAC reporting purposes the cost of fuel expended to cover any line losses incurred to transmit its power across the third party's transmission system.
 - (2) State the line loss factor used for each transaction and describe how that line loss factor was determined.
- A-19. As stated in the previous FAC 6-month review (Case No. 2005-00243), subsequent to the start of the MISO Day 2 market on April 1, 2005, all off-system sales are made at the generator, and there are no separately identifiable physical losses to include as part of off-system sales. Therefore there are zero third party losses. For purposes of compliance with FAC regulations, the Companies continue to use the AFB process to allocate fuel costs between native load and off-system sales.

LOUISVILLE GAS AND ELECTRIC COMPANY

**Response to Information Requested in Appendix A to
Commission's Order Dated December 27, 2005**

Case No. 2005-00497

Question No. 20

Witness: Robert M. Conroy

Q-20. Describe each change that LG&E made during the period under review to its methodology for calculating intersystem sales line losses.

A-20. None.