



Ernie Fletcher
Governor

LaJuana S. Wilcher, Secretary
Environmental and Public
Protection Cabinet

Christopher L. Lilly
Commissioner
Department of Public Protection

Commonwealth of Kentucky
Public Service Commission
211 Sower Blvd.
P. O. Box 615
Frankfort, Kentucky 40602-0615
Telephone: (502) 564-3940
Fax: (502) 564-3460
psc.ky.gov

Mark David Goss
Chairman

Teresa J. Hill
Vice Chairman

Gregory Coker
Commissioner

February 6, 2006

Mr. Hansell Pile, Jr.
Pile Stock Farm
12045 St. John Road
Cecilia, KY 42724

Subject: Case Nos. 2005-00467 and 2005-00472

Dear Mr. Pile:

This letter is in response to your undated letter addressed to the "Ky. Public Service Commission" that we received on January 30, 2006. You begin it by writing, "I Hansell Pile Jr. after intervening in Ky. Utilities Co. in constructing a 345-kilovolt electrical line would like to give some of my reasons." You then follow with several points regarding your opposition to the proposed transmission line.

The Commission granted your petition for full intervention by Order dated January 6, 2006, a copy of which is attached. As a full intervenor, you now have certain rights and duties. Ordering Paragraph 3 of that January 6 Order requires: "Should any Petitioner file documents of any kind with the Commission in the course of these proceedings, said Petitioner shall also serve a copy of said documents on all other parties of record." Proof that a party has properly served all parties is typically a signed Certificate of Service at the end of the document so stating.

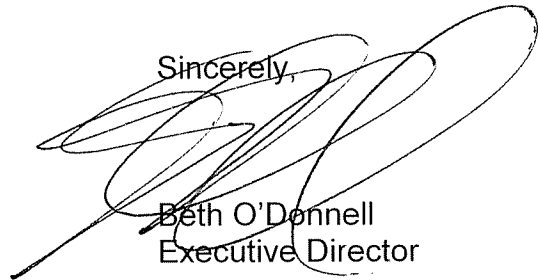
Because your letter included no such certificate, I must assume that you failed to serve a copy on all parties. In the future, you can find the service list in either of two ways. If you go to the Commission's Web page and next connect to the link for Docket Information, http://psc.ky.gov/docket_web_reports/fmRPTSelection.asp, you can search for "Service List for selected case number." Then put in the appropriate docket numbers, 2005-00467 and 2005-00472, and click on "generate report." Alternatively, you can call the Commission (502/564-3940) and speak to someone in the Filings Division, who should be able to help you.

Mr. Hansell Pile, Jr.
February 6, 2006
Page Two

In this instance, your letter is hand-written; hence, I believe it is unlikely that you would be able to serve all parties now. For this letter, then, the Commission will serve all parties with your letter. From now on, however, all intervenors should not file anything with the Commission without serving all other parties of record.

Thank you for your continuing interest. Once served on all parties, your letter will be placed in the official files for these cases.

Sincerely,

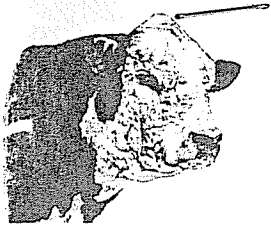
A handwritten signature in black ink, appearing to read "Beth O'Donnell", written over the typed name and title.

Beth O'Donnell
Executive Director

cc: Parties of record with:
copy of letter from Hansell Pile, Jr.
copy of Commission Order dated January 6, 2006

2005-467

Turner



PILE STOCK FARM REGISTERED POLLED HEREFORDS

12045 ST. JOHN RD. CECILIA, KY. 42724
PHONE (270) 862-4462

HANSELL PILE
HANSELL PILE, JR.
HANS BRANHAM

RECEIVED
JAN 31 2006
GENERAL COUNSEL
JAN 30 2006
PUBLIC SERVICE
COMMISSION

Ky. Public Service Commission
I Hansell Pile Jr. after intervening in Ky. Utilities
Co. in constructing a 345-kilovolt electrical line would
like to give some of my reasons.

We want to preseve farmland.

We want to preserve this farm as a working
farm not as fields with steel structers towering toward
the sky.

We don't want to manuver machinery around these
structers from now on. Combines and silage choppers
can not follow corn rows around these structers.

KU will DESTROY timber young and mature. We have
preserved these forest lands since 1948 keeping people
with chain saws out. Pine trees set by my father in
1955 are 60' tall and never been cut. This 51 and 58
years is conservation not 10 seconds of a seedling growing
to maturity in an E.ON commercial on T.V.

KU will leave gates open or fastened insecure letting
cattle out. Farmers can tell when someone has been through
gates. KU will use our rock roads with heavy tractor
trailers and trucks. Will cross fields to wet to cross.

This proposed line is Not convenient to the people
at Pile Stock Farm
Hansell Pile Jr.

COMMONWEALTH OF KENTUCKY
BEFORE THE PUBLIC SERVICE COMMISSION

In the Matter of:

APPLICATION OF LOUISVILLE GAS AND)	
ELECTRIC COMPANY AND KENTUCKY)	
UTILITIES COMPANY FOR A CERTIFICATE OF)	CASE NO.
PUBLIC CONVENIENCE AND NECESSITY FOR)	2005-00467
THE CONSTRUCTION OF TRANSMISSION)	
FACILITIES IN JEFFERSON, BULLITT, MEADE)	
AND HARDIN COUNTIES, KENTUCKY)	

and

APPLICATION OF LOUISVILLE GAS AND)	
ELECTRIC COMPANY AND KENTUCKY)	
UTILITIES COMPANY FOR A CERTIFICATE OF)	
PUBLIC CONVENIENCE AND NECESSITY FOR)	CASE NO.
THE CONSTRUCTION OF ALTERNATIVE)	2005-00472
TRANSMISSION FACILITIES IN JEFFERSON,)	
BULLITT, MEADE AND HARDIN COUNTIES,)	
KENTUCKY)	

O R D E R

This matter arising upon the motions of Betty Coyle, Samuel and Ewona Coyle, Hansell Pile, Jr., and Reverend John Brewer (collectively "Petitioners") for full intervention, it appearing to the Commission that such interventions are likely to present issues and develop facts that will assist the Commission in fully considering the matters without unduly complicating or disrupting the proceedings, and this Commission being otherwise sufficiently advised,

IT IS HEREBY ORDERED that:

1. The motions of Petitioners to intervene are granted.

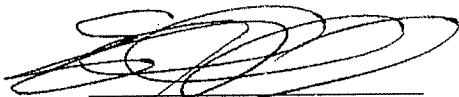
2. Each Petitioner shall be entitled to the full rights of a party and shall be served with the Commission's Orders and with filed testimony, exhibits, pleadings, correspondence, and all other documents submitted by parties after the date of this Order.

3. Should any Petitioner file documents of any kind with the Commission in the course of these proceedings, said Petitioner shall also serve a copy of said documents on all other parties of record.

Done at Frankfort, Kentucky, this 6th day of January, 2006.

By the Commission

ATTEST:

A handwritten signature in black ink, consisting of several overlapping loops and a long horizontal stroke at the end, positioned above a horizontal line.

Executive Director

Case No. 2005-00467
Case No. 2005-00472