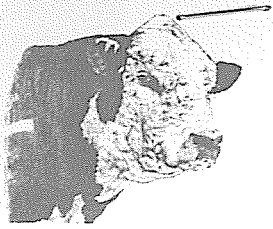


2005-467



PILE STOCK FARM

REGISTERED POLLED HEREFORDS

12045 ST. JOHN RD. CECILIA, KY. 42724
PHONE (270) 862-4462

RECEIVED

JAN 30 2006

PUBLIC SERVICE
COMMISSION

HANSELL PILE
HANSELL PILE, JR.
HANS BRANHAM

Ky. Public Service Commission
I Hansell Pile Jr. after intervening in Ky. Utilities
Co. in constructing a 345-kilovolt electrical line would
like to give some of my reasons.

We want to preseve farmland.

We want to preserve this farm as a working
farm not as fields with steel structers towering toward
the sky.

We don't want to manuver machinery around these
structers from now on. Combines and silage choppers
can not follow corn rows around these structers.

KU will DESTROY timber young and mature. We have
preserved these forest lands since 1948 keeping people
with chain saws out. Pine trees set by my father in
1955 are 60' tall and never been cut. This 51 and 58
years is conservation not 10 seconds of a seedling growing
to maturity in an E.ON commercial on T.V.

KU will leave gates open or fastened insecure letting
cattle out. Farmers can tell when someone has been through
gates. KU will use our rock roads with heavy tractor
trailers and trucks. Will cross fields to wet to cross.

This proposed line is Not convenent to the people
at Pile Stock Farm

Hansell Pile Jr.