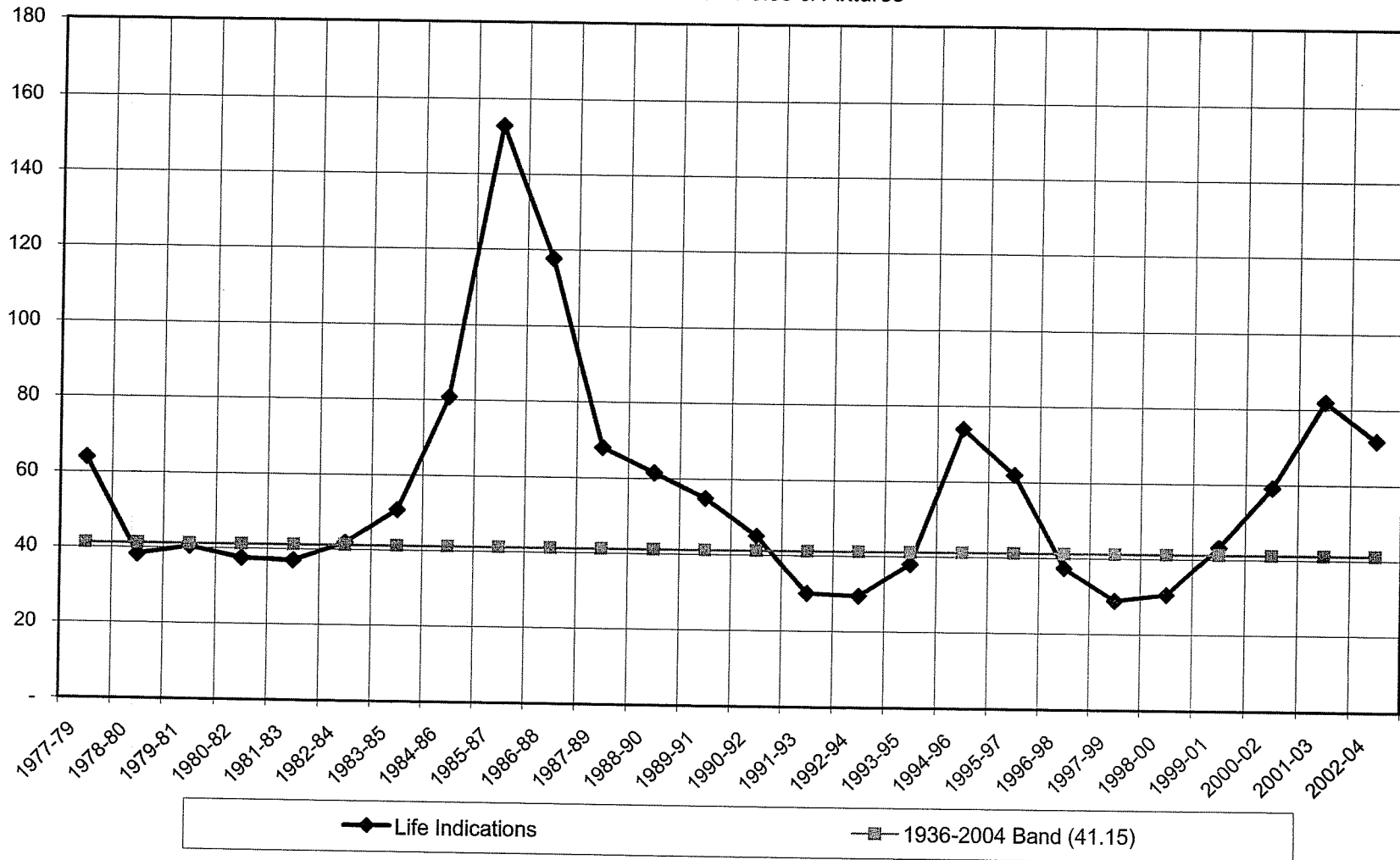
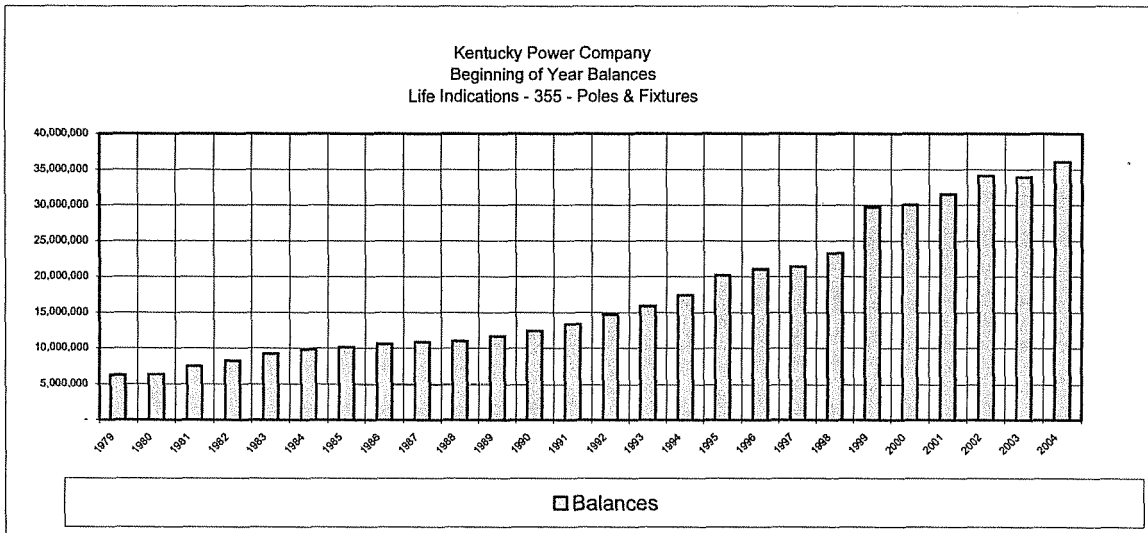
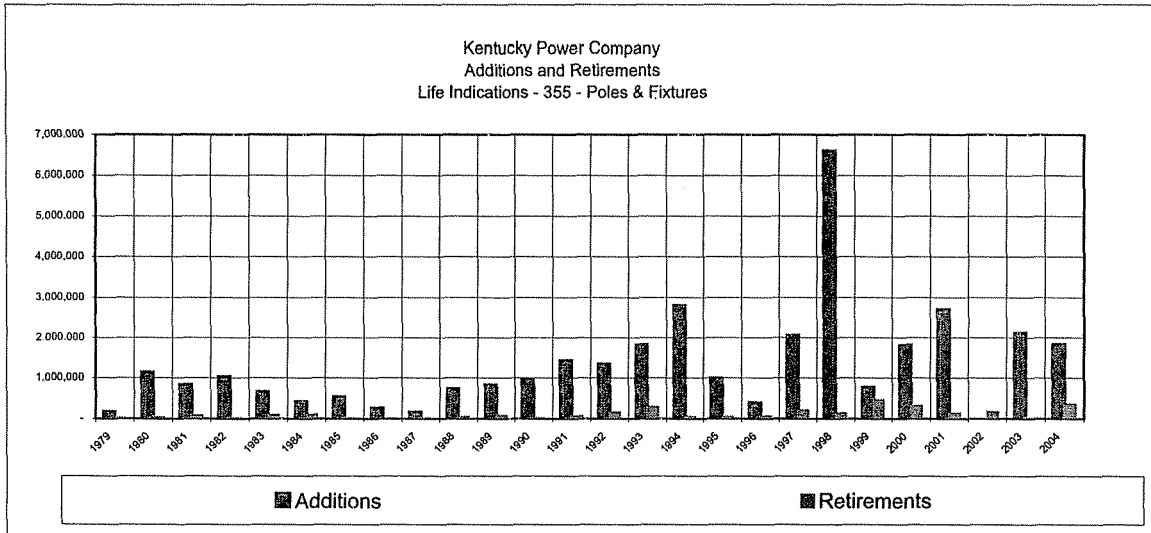


Kentucky Power Company  
Geometric Mean 3 Year Rolling Band Analysis  
Life Indications - 355 - Poles & Fixtures



**Kentucky Power Company  
Electric Plant In Service  
Additions, Retirements and Balances**

**Account 355 - Poles & Fixtures**



**Kentucky Power Company**

**355 - Poles & Fixtures**

**Calculation of Remaining Life  
Based Upon Broad Group/Vintage Group Procedures  
Related to Original Cost as of December 31, 2004**

Survivor Curve .. IOWA:		39	R3			
Year (1)	Age (2)	Surviving Investment (3)	BG/VG Average		ASL Weights (6)=(3)/(4)	RL Weights (7)=(6)*(5)
			Service Life (4)	Remaining Life (5)		
2004	0.5	1,829,567	39.00	38.51	46,912	1,806,439
2003	1.5	2,118,234	39.00	37.52	54,314	2,038,118
2002	2.5	0	39.00	36.55	0	0
2001	3.5	2,702,515	39.00	35.57	69,295	2,464,970
2000	4.5	1,801,671	39.00	34.60	46,197	1,598,509
1999	5.5	764,347	39.00	33.64	19,599	659,247
1998	6.5	6,599,776	39.00	32.68	169,225	5,529,989
1997	7.5	2,041,386	39.00	31.73	52,343	1,660,610
1996	8.5	385,779	39.00	30.78	9,892	304,461
1995	9.5	967,641	39.00	29.84	24,811	740,386
1994	10.5	2,778,217	39.00	28.91	71,236	2,059,426
1993	11.5	1,800,030	39.00	27.99	46,155	1,291,763
1992	12.5	1,311,825	39.00	27.07	33,637	910,691
1991	13.5	1,401,628	39.00	26.17	35,939	940,570
1990	14.5	918,598	39.00	25.28	23,554	595,387
1989	15.5	807,181	39.00	24.40	20,697	504,904
1988	16.5	700,249	39.00	23.52	17,955	422,367
1987	17.5	150,181	39.00	22.66	3,851	87,272
1986	18.5	243,862	39.00	21.82	6,253	136,407
1985	19.5	502,370	39.00	20.98	12,881	270,235
1984	20.5	382,488	39.00	20.16	9,807	197,676
1983	21.5	615,704	39.00	19.35	15,787	305,410
1982	22.5	944,822	39.00	18.55	24,226	449,360
1981	23.5	760,349	39.00	17.77	19,496	346,354
1980	24.5	1,015,553	39.00	17.00	26,040	442,577
1979	25.5	145,260	39.00	16.24	3,725	60,495
1978	26.5	357,929	39.00	15.50	9,178	142,278
1977	27.5	77,489	39.00	14.78	1,987	29,366
1976	28.5	546,214	39.00	14.07	14,005	197,097
1975	29.5	352,500	39.00	13.38	9,038	120,971
1974	30.5	74,440	39.00	12.71	1,909	24,265
1973	31.5	277,113	39.00	12.06	7,105	85,702
1972	32.5	130,423	39.00	11.43	3,344	38,224
1971	33.5	192,218	39.00	10.82	4,929	53,324
1970	34.5	728	39.00	10.23	19	191

1969	35.5	294,196	39.00	9.66	7,543	72,908
1968	36.5	218,486	39.00	9.12	5,602	51,111
1967	37.5	288,876	39.00	8.61	7,407	63,738
1966	38.5	416,116	39.00	8.11	10,670	86,546
1965	39.5	266,027	39.00	7.64	6,821	52,129
1964	40.5	84,831	39.00	7.20	2,175	15,655
1963	41.5	17,844	39.00	6.78	458	3,101
1962	42.5	41,997	39.00	6.38	1,077	6,869
1961	43.5	25,044	39.00	6.00	642	3,856
1960	44.5	33,161	39.00	5.65	850	4,804
1959	45.5	29,007	39.00	5.32	744	3,954
1958	46.5	11,917	39.00	5.00	306	1,528
1957	47.5	6,874	39.00	4.70	176	828
1956	48.5	17,322	39.00	4.41	444	1,959
1955	49.5	4,472	39.00	4.14	115	474
1954	50.5	8,255	39.00	3.87	212	819
1953	51.5	24,395	39.00	3.61	626	2,256
1952	52.5	4,847	39.00	3.35	124	416
1951	53.5	2,002	39.00	3.09	51	159
1950	54.5	1,285	39.00	2.83	33	93
1949	55.5	7,108	39.00	2.58	182	470
1948	56.5	626	39.00	2.33	16	37
1947	57.5	307	39.00	2.07	8	16
1946	58.5	392	39.00	1.82	10	18
1945	59.5	942	39.00	1.57	24	38
1944	60.5	975	39.00	1.34	25	33
1943	61.5	79	39.00	1.11	2	2
1942	62.5	519	39.00	0.89	13	12
1941	63.5	18	39.00	0.69	0	0
1940	64.5	1	39.00	0.52	0	0
1939	65.5	0	39.00	0.50	0	0
1938	66.5	0	39.00	0.50	0	0
1937	67.5	0	39.00	0.50	0	0
1936	68.5	0	39.00	0.50	0	0

37,506,208

961,698 26,888,870

AVERAGE SERVICE LIFE	39.00
AVERAGE REMAINING LIFE	27.96

## Kentucky Power Company

# 356 - OH Conductor & Devices

### Company Notes

Prior to year 2000, the investment in this account was separated into categories of investments of equipment serving voltages 69KV and below and investments serving voltages above 69 KV. The investments of 69 KV and below were treated as mass assets and those above 69 KV were tracked by vintage year. In year 2000, the investments related to the mass assets were vintaged and now the entire account is treated as vintaged. However, vintaged retirements related to those assets previously treated as mass assets are not available. Therefore, the simulation method of life analysis was used for property in this account.

The simulation analyses for all bands indicate the current average service life of 50 years should be retained and the dispersion pattern should be changed to an S6.0 type curve.

Scrap sales of conductor would be expected to produce salvage for this investment. However the cost of removing and replacing conductor will produce a cost of removal. The recommendation is for a gross salvage of 20% and a removal value of 25%

### Sk Notes

Account analyzed with SPR model - Use company recommendation

**SPR Results**  
**Kentucky Power Company**  
**Account: 356 - OH Conductor & Devices**

Curve	Life	Sum of Squared Differences	Index of of Variation
<b>BAND: 2000 - 2004</b>			
S6	51	5.12E+09	
SQ	51	1.13E+10	
S5	52	3.21E+10	1
R5	53	7.28E+10	1
L5	53	8.78E+10	1
R2	100	1.18E+11	2
R2.5	81	1.53E+11	2
S4	53	1.75E+11	2
L4	56	1.88E+11	2
L1.5	97	1.92E+11	2
R3	67	2.35E+11	2
L2	79	2.52E+11	2
S1	83	2.53E+11	2
L3	64	2.56E+11	2
S1.5	73	2.70E+11	2
S3	58	2.73E+11	2
S2	65	2.93E+11	2
R4	57	2.95E+11	2
S0.5	100	2.97E+11	2
L1	100	4.66E+12	10
S0	100	9.79E+12	14
R1.5	100	1.10E+13	15
L0.5	100	4.03E+13	28
R1	100	4.29E+13	29
S-0.5	100	8.02E+13	40
L0	100	1.12E+14	47
R0.5	100	1.14E+14	48
O1	100	2.19E+14	66
O2	100	3.04E+14	78
O3	100	7.66E+14	124
O4	100	1.54E+15	176

Minimum Equipment Life Expectancy: 4  
 Maximum Equipment Life Expectancy: 100  
 Life Expectancy Increment: 1  
 Begin Year: 2000  
 End Year: 2004  
 Year Fit Increment: 0

**Plant Balances**

Year	Balance	Year	Balance	Year	Balance	Year	Balance
2004	100,355,481	2003	100,030,466	2002	99,821,894	2001	99,426,473
2000	99,200,179						

**Simulated Balances**

Curve: **S6** ASL: **51** SSD: **5.12E+09** IV:

Year	Balance	Year	Balance	Year	Balance	Year	Balance
2004	100,314,694	2003	100,026,136	2002	99,799,997	2001	99,378,831
2000	99,226,371						

Curve: **SQ** ASL: **51** SSD: **1.13E+10** IV:

Year	Balance	Year	Balance	Year	Balance	Year	Balance
2004	100,295,460	2003	100,082,310	2002	99,845,611	2001	99,376,514
2000	99,156,281						

Curve: **S5** ASL: **52** SSD: **3.21E+10** IV: **1**

Year	Balance	Year	Balance	Year	Balance	Year	Balance
2004	100,286,185	2003	100,042,641	2002	99,857,138	2001	99,472,995
2000	99,354,352						

Curve: **R5** ASL: **53** SSD: **7.28E+10** IV: **1**

Year	Balance	Year	Balance	Year	Balance	Year	Balance
2004	100,180,525	2003	99,972,294	2002	99,823,537	2001	99,475,469
2000	99,391,076						

Curve: **L5** ASL: **53** SSD: **8.78E+10** IV: **1**

Year	Balance	Year	Balance	Year	Balance	Year	Balance
2004	100,198,807	2003	100,005,610	2002	99,864,765	2001	99,518,100
2000	99,428,995						

Curve: **R2** ASL: **100** SSD: **1.18E+11** IV: **2**

Year	Balance	Year	Balance	Year	Balance	Year	Balance
2004	100,116,688	2003	99,927,796	2002	99,802,166	2001	99,478,737

2000 99,418,079

**Curve: R2.5 ASL: 81 SSD: 1.53E+11 IV: 2**

<b>Year</b>	<b>Balance</b>	<b>Year</b>	<b>Balance</b>	<b>Year</b>	<b>Balance</b>	<b>Year</b>	<b>Balance</b>
2004	100,090,102	2003	99,922,019	2002	99,813,562	2001	99,504,001
2000	99,454,300						

**Curve: S4 ASL: 53 SSD: 1.75E+11 IV: 2**

<b>Year</b>	<b>Balance</b>	<b>Year</b>	<b>Balance</b>	<b>Year</b>	<b>Balance</b>	<b>Year</b>	<b>Balance</b>
2004	100,024,543	2003	99,868,176	2002	99,761,617	2001	99,446,655
2000	99,386,414						

**Curve: L4 ASL: 56 SSD: 1.88E+11 IV: 2**

<b>Year</b>	<b>Balance</b>	<b>Year</b>	<b>Balance</b>	<b>Year</b>	<b>Balance</b>	<b>Year</b>	<b>Balance</b>
2004	100,027,764	2003	99,880,868	2002	99,784,686	2001	99,480,537
2000	99,431,722						

**Curve: L1.5 ASL: 97 SSD: 1.92E+11 IV: 2**

<b>Year</b>	<b>Balance</b>	<b>Year</b>	<b>Balance</b>	<b>Year</b>	<b>Balance</b>	<b>Year</b>	<b>Balance</b>
2004	100,107,965	2003	99,956,792	2002	99,862,464	2001	99,564,315
2000	99,523,167						

**Curve: R3 ASL: 67 SSD: 2.35E+11 IV: 2**

<b>Year</b>	<b>Balance</b>	<b>Year</b>	<b>Balance</b>	<b>Year</b>	<b>Balance</b>	<b>Year</b>	<b>Balance</b>
2004	100,026,996	2003	99,898,147	2002	99,822,395	2001	99,540,153
2000	99,511,787						

**Curve: L2 ASL: 79 SSD: 2.52E+11 IV: 2**

<b>Year</b>	<b>Balance</b>	<b>Year</b>	<b>Balance</b>	<b>Year</b>	<b>Balance</b>	<b>Year</b>	<b>Balance</b>
2004	100,021,666	2003	99,899,963	2002	99,830,646	2001	99,553,091
2000	99,527,843						

**Curve: S1 ASL: 83 SSD: 2.53E+11 IV: 2**

<b>Year</b>	<b>Balance</b>	<b>Year</b>	<b>Balance</b>	<b>Year</b>	<b>Balance</b>	<b>Year</b>	<b>Balance</b>
2004	100,097,938	2003	99,968,373	2002	99,892,582	2001	99,609,833
2000	99,580,324						



<b>Curve:</b>	<b>L3</b>		<b>ASL: 64</b>		<b>SSD: 2.56E+11</b>		<b>IV: 2</b>
<b>Year</b>	<b>Balance</b>	<b>Year</b>	<b>Balance</b>	<b>Year</b>	<b>Balance</b>	<b>Year</b>	<b>Balance</b>
2004	100,055,922	2003	99,938,329	2002	99,869,662	2001	99,589,328
2000	99,559,871						

<b>Curve:</b>	<b>S1.5</b>		<b>ASL: 73</b>		<b>SSD: 2.70E+11</b>		<b>IV: 2</b>
<b>Year</b>	<b>Balance</b>	<b>Year</b>	<b>Balance</b>	<b>Year</b>	<b>Balance</b>	<b>Year</b>	<b>Balance</b>
2004	99,993,610	2003	99,878,510	2002	99,814,656	2001	99,542,123
2000	99,520,734						

<b>Curve:</b>	<b>S3</b>		<b>ASL: 58</b>		<b>SSD: 2.73E+11</b>		<b>IV: 2</b>
<b>Year</b>	<b>Balance</b>	<b>Year</b>	<b>Balance</b>	<b>Year</b>	<b>Balance</b>	<b>Year</b>	<b>Balance</b>
2004	100,117,936	2003	99,995,862	2002	99,921,849	2001	99,636,155
2000	99,601,411						

<b>Curve:</b>	<b>S2</b>		<b>ASL: 65</b>		<b>SSD: 2.93E+11</b>		<b>IV: 2</b>
<b>Year</b>	<b>Balance</b>	<b>Year</b>	<b>Balance</b>	<b>Year</b>	<b>Balance</b>	<b>Year</b>	<b>Balance</b>
2004	100,018,078	2003	99,915,186	2002	99,858,545	2001	99,590,376
2000	99,570,897						

<b>Curve:</b>	<b>R4</b>		<b>ASL: 57</b>		<b>SSD: 2.95E+11</b>		<b>IV: 2</b>
<b>Year</b>	<b>Balance</b>	<b>Year</b>	<b>Balance</b>	<b>Year</b>	<b>Balance</b>	<b>Year</b>	<b>Balance</b>
2004	99,943,870	2003	99,827,855	2002	99,764,691	2001	99,494,146
2000	99,477,791						

<b>Curve:</b>	<b>S0.5</b>		<b>ASL: 100</b>		<b>SSD: 2.97E+11</b>		<b>IV: 2</b>
<b>Year</b>	<b>Balance</b>	<b>Year</b>	<b>Balance</b>	<b>Year</b>	<b>Balance</b>	<b>Year</b>	<b>Balance</b>
2004	99,922,783	2003	99,778,227	2002	99,691,411	2001	99,401,179
2000	99,367,895						

<b>Curve:</b>	<b>L1</b>		<b>ASL: 100</b>		<b>SSD: 4.66E+12</b>		<b>IV: 10</b>
<b>Year</b>	<b>Balance</b>	<b>Year</b>	<b>Balance</b>	<b>Year</b>	<b>Balance</b>	<b>Year</b>	<b>Balance</b>
2004	99,027,152	2003	98,937,110	2002	98,902,553	2001	98,662,583
2000	98,677,968						

<b>Curve:</b>	<b>S0</b>		<b>ASL: 100</b>		<b>SSD: 9.79E+12</b>		<b>IV: 14</b>
<b>Year</b>	<b>Balance</b>	<b>Year</b>	<b>Balance</b>	<b>Year</b>	<b>Balance</b>	<b>Year</b>	<b>Balance</b>

2004	98,542,691	2003	98,474,286	2002	98,462,426	2001	98,245,575
2000	98,283,619						

**Curve: R1.5 ASL: 100 SSD: 1.10E+13 IV: 15**

Year	Balance	Year	Balance	Year	Balance	Year	Balance
2004	98,523,531	2003	98,408,550	2002	98,357,400	2001	98,108,868
2000	98,123,556						

**Curve: L0.5 ASL: 100 SSD: 4.03E+13 IV: 28**

Year	Balance	Year	Balance	Year	Balance	Year	Balance
2004	96,941,162	2003	96,952,747	2002	97,020,261	2001	96,882,107
2000	96,998,053						

**Curve: R1 ASL: 100 SSD: 4.29E+13 IV: 29**

Year	Balance	Year	Balance	Year	Balance	Year	Balance
2004	96,930,395	2003	96,889,316	2002	96,912,617	2001	96,739,009
2000	96,829,047						

**Curve: S-0.5 ASL: 100 SSD: 8.02E+13 IV: 40**

Year	Balance	Year	Balance	Year	Balance	Year	Balance
2004	95,715,406	2003	95,749,067	2002	95,844,631	2001	95,740,644
2000	95,897,363						

**Curve: L0 ASL: 100 SSD: 1.12E+14 IV: 47**

Year	Balance	Year	Balance	Year	Balance	Year	Balance
2004	94,855,157	2003	94,968,399	2002	95,138,005	2001	95,101,670
2000	95,318,221						

**Curve: R0.5 ASL: 100 SSD: 1.14E+14 IV: 48**

Year	Balance	Year	Balance	Year	Balance	Year	Balance
2004	94,909,284	2003	94,956,611	2002	95,069,756	2001	94,987,387
2000	95,170,073						

**Curve: O1 ASL: 100 SSD: 2.19E+14 IV: 66**

Year	Balance	Year	Balance	Year	Balance	Year	Balance
2004	92,888,169	2003	93,023,878	2002	93,226,885	2001	93,235,757
2000	93,511,120						

<b>Curve:</b>	<b>O2</b>	<b>ASL: 100</b>	<b>SSD: 3.04E+14</b>	<b>IV: 78</b>			
<b>Year</b>	<b>Balance</b>	<b>Year</b>	<b>Balance</b>	<b>Year</b>	<b>Balance</b>	<b>Year</b>	<b>Balance</b>
2004	91,589,608	2003	91,789,405	2002	92,056,239	2001	92,128,678
2000	92,467,353						

<b>Curve:</b>	<b>O3</b>	<b>ASL: 100</b>	<b>SSD: 7.66E+14</b>	<b>IV: 124</b>			
<b>Year</b>	<b>Balance</b>	<b>Year</b>	<b>Balance</b>	<b>Year</b>	<b>Balance</b>	<b>Year</b>	<b>Balance</b>
2004	86,550,735	2003	86,983,250	2002	87,484,607	2001	87,793,078
2000	88,369,313						

<b>Curve:</b>	<b>O4</b>	<b>ASL: 100</b>	<b>SSD: 1.54E+15</b>	<b>IV: 176</b>			
<b>Year</b>	<b>Balance</b>	<b>Year</b>	<b>Balance</b>	<b>Year</b>	<b>Balance</b>	<b>Year</b>	<b>Balance</b>
2004	80,872,451	2003	81,551,316	2002	82,303,825	2001	82,867,837
2000	83,703,889						

**SPR Results**  
**Kentucky Power Company**  
**Account: 356 - Underground Conduit**

Curve	Life	Sum of Squared Differences	Index of Variation
<b>BAND: 1936 - 2004</b>			
R2	90	1.88E+13	17
R2.5	74	2.02E+13	18
S0.5	93	2.07E+13	18
L1.5	88	2.09E+13	18
L1	100	2.10E+13	18
S1	76	2.21E+13	19
L2	73	2.22E+13	19
S1.5	68	2.25E+13	19
L3	59	2.28E+13	19
S2	61	2.29E+13	19
R3	62	2.30E+13	19
S3	54	2.32E+13	19
L4	52	2.33E+13	19
L5	49	2.34E+13	19
S4	50	2.35E+13	19
S5	48	2.45E+13	20
R5	49	2.54E+13	20
S0	100	2.58E+13	20
R4	54	2.61E+13	20
S6	46	2.62E+13	21
R1.5	100	2.71E+13	21
SQ	46	3.01E+13	22
L0.5	100	6.77E+13	33
R1	100	7.65E+13	35
S-0.5	100	1.38E+14	47
L0	100	1.86E+14	55
R0.5	100	2.04E+14	57
O1	100	4.03E+14	80
O2	100	5.64E+14	95
O3	100	1.47E+15	154
O4	100	3.04E+15	221

Minimum Equipment Life Expectancy: 4  
 Maximum Equipment Life Expectancy: 100  
 Life Expectancy Increment: 1  
 Begin Year: 1936  
 End Year: 2004  
 Year Fit Increment: 0

**Plant Balances**

Year	Balance	Year	Balance	Year	Balance	Year	Balance
2004	100,355,481	2003	100,030,466	2002	99,821,894	2001	99,426,473
2000	99,200,179	1999	98,465,867	1998	84,689,784	1997	79,494,616
1996	78,987,641	1995	78,724,020	1994	77,350,911	1993	74,162,993
1992	72,851,046	1991	71,182,194	1990	70,607,953	1989	69,449,043
1988	69,001,832	1987	68,697,900	1986	68,625,913	1985	68,482,517
1984	68,403,297	1983	21,654,290	1982	21,537,119	1981	20,305,541
1980	19,694,907	1979	19,253,132	1978	19,039,913	1977	18,602,970
1976	18,280,523	1975	17,768,831	1974	17,422,865	1973	17,378,617
1972	17,340,569	1971	17,244,105	1970	16,895,122	1969	10,985,543
1968	7,409,923	1967	7,197,208	1966	6,164,672	1965	5,831,090
1964	5,175,273	1963	4,301,324	1962	4,216,463	1961	3,556,137
1960	3,492,042	1959	3,470,851	1958	3,265,646	1957	2,906,515
1956	2,911,960	1955	2,829,665	1954	2,821,108	1953	2,814,521
1952	2,653,286	1951	2,588,085	1950	2,575,406	1949	2,573,160
1948	2,404,030	1947	2,392,267	1946	2,388,160	1945	2,373,624
1944	2,277,908	1943	1,984,004	1942	1,972,759	1941	1,430,644
1940	1,444,027	1939	1,474,188	1938	1,489,014	1937	1,368,995
1936	1,352,741						

**Simulated Balances**

Curve: R2		ASL: 90		SSD: 1.88E+13		IV: 17	
Year	Balance	Year	Balance	Year	Balance	Year	Balance
2004	99,534,405	2003	99,383,470	2002	99,294,079	2001	99,005,290
2000	98,977,753	1999	98,331,590	1998	84,426,724	1997	79,232,037
1996	78,801,118	1995	78,653,672	1994	77,431,062	1993	74,373,833
1992	73,063,854	1991	71,452,822	1990	70,948,567	1989	69,909,484
1988	69,527,605	1987	69,325,336	1986	69,360,124	1985	69,245,882
1984	69,258,544	1983	22,509,415	1982	22,377,699	1981	21,110,552
1980	20,486,615	1979	20,052,766	1978	19,877,180	1977	19,457,129
1976	19,169,213	1975	18,684,752	1974	18,341,786	1973	18,298,852
1972	18,263,562	1971	18,165,302	1970	17,785,890	1969	11,891,428
1968	8,183,207	1967	7,881,681	1966	6,625,036	1965	6,239,106
1964	5,483,853	1963	4,605,580	1962	4,516,057	1961	3,830,640
1960	3,771,341	1959	3,719,363	1958	3,515,749	1957	3,151,421
1956	3,132,560	1955	3,053,844	1954	3,040,082	1953	3,025,078
1952	2,861,115	1951	2,790,476	1950	2,760,260	1949	2,753,373
1948	2,564,298	1947	2,537,206	1946	2,522,915	1945	2,505,742
1944	2,409,339	1943	2,110,222	1942	2,097,190	1941	1,550,707
1940	1,528,194	1939	1,517,663	1938	1,517,773	1937	1,389,108
1936	1,352,029						

<b>Curve: R2.5</b>		<b>ASL: 74</b>		<b>SSD: 2.02E+13</b>		<b>IV: 18</b>	
<b>Year</b>	<b>Balance</b>	<b>Year</b>	<b>Balance</b>	<b>Year</b>	<b>Balance</b>	<b>Year</b>	<b>Balance</b>
2004	99,444,212	2003	99,322,407	2002	99,258,141	2001	98,989,615
2000	98,978,897	1999	98,346,095	1998	84,452,884	1997	79,269,907
1996	78,848,735	1995	78,708,049	1994	77,490,103	1993	74,435,602
1992	73,126,636	1991	71,515,368	1990	71,008,943	1989	69,966,222
1988	69,579,555	1987	69,370,986	1986	69,398,153	1985	69,275,313
1984	69,277,972	1983	22,525,106	1982	22,396,033	1981	21,130,911
1980	20,508,608	1979	20,075,852	1978	19,900,783	1977	19,480,816
1976	19,192,498	1975	18,707,253	1974	18,363,234	1973	18,318,846
1972	18,281,745	1971	18,181,382	1970	17,799,566	1969	11,903,381
1968	8,194,668	1967	7,893,005	1966	6,636,280	1965	6,250,323
1964	5,495,017	1963	4,616,798	1962	4,527,310	1961	3,841,896
1960	3,782,599	1959	3,730,503	1958	3,526,696	1957	3,162,180
1956	3,143,080	1955	3,064,054	1954	3,049,930	1953	3,034,475
1952	2,870,030	1951	2,798,891	1950	2,768,124	1949	2,760,650
1948	2,570,981	1947	2,543,284	1946	2,528,368	1945	2,510,544
1944	2,413,477	1943	2,113,743	1942	2,100,116	1941	1,553,110
1940	1,530,155	1939	1,519,179	1938	1,518,835	1937	1,389,735
1936	1,352,236						

<b>Curve: S0.5</b>		<b>ASL: 93</b>		<b>SSD: 2.07E+13</b>		<b>IV: 18</b>	
<b>Year</b>	<b>Balance</b>	<b>Year</b>	<b>Balance</b>	<b>Year</b>	<b>Balance</b>	<b>Year</b>	<b>Balance</b>
2004	99,411,537	2003	99,302,172	2002	99,248,600	2001	98,989,961
2000	98,986,588	1999	98,358,385	1998	84,472,236	1997	79,300,201
1996	78,889,955	1995	78,758,539	1994	77,547,529	1993	74,498,919
1992	73,194,818	1991	71,586,232	1990	71,080,532	1989	70,035,576
1988	69,643,427	1987	69,426,262	1986	69,440,779	1985	69,300,573
1984	69,280,600	1983	22,516,209	1982	22,389,871	1981	21,127,381
1980	20,507,669	1979	20,077,262	1978	19,904,114	1977	19,485,479
1976	19,197,994	1975	18,713,003	1974	18,368,579	1973	18,323,078
1972	18,283,895	1971	18,180,349	1970	17,794,295	1969	11,894,753
1968	8,185,128	1967	7,883,479	1966	6,626,904	1965	6,241,345
1964	5,486,557	1963	4,609,155	1962	4,520,635	1961	3,836,297
1960	3,778,172	1959	3,727,168	1958	3,524,391	1957	3,160,946
1956	3,142,940	1955	3,064,908	1954	3,051,657	1953	3,036,962
1952	2,873,178	1951	2,802,627	1950	2,772,343	1949	2,765,197
1948	2,575,757	1947	2,548,208	1946	2,533,283	1945	2,515,291
1944	2,417,916	1943	2,117,820	1942	2,103,768	1941	1,556,360
1940	1,533,060	1939	1,521,635	1938	1,520,715	1937	1,390,937
1936	1,352,664						

<b>Curve: L1.5</b>		<b>ASL: 88</b>		<b>SSD: 2.09E+13</b>		<b>IV: 18</b>	
<b>Year</b>	<b>Balance</b>	<b>Year</b>	<b>Balance</b>	<b>Year</b>	<b>Balance</b>	<b>Year</b>	<b>Balance</b>
2004	99,360,646	2003	99,263,826	2002	99,220,776	2001	98,970,134
2000	98,973,420	1999	98,351,528	1998	84,469,701	1997	79,298,785
1996	78,887,941	1995	78,755,099	1994	77,541,778	1993	74,489,922

1992	73,182,002	1991	71,569,545	1990	71,060,311	1989	70,012,769
1988	69,619,203	1987	69,402,086	1986	69,418,585	1985	69,283,388
1984	69,272,779	1983	22,515,347	1982	22,390,536	1981	21,129,130
1980	20,509,965	1979	20,079,674	1978	19,906,368	1977	19,487,409
1976	19,199,517	1975	18,714,099	1974	18,369,324	1973	18,323,673
1972	18,284,715	1971	18,181,966	1970	17,797,508	1969	11,899,639
1968	8,190,932	1967	7,889,875	1966	6,633,826	1965	6,248,696
1964	5,494,289	1963	4,617,122	1962	4,528,733	1961	3,844,417
1960	3,786,169	1959	3,734,990	1958	3,531,986	1957	3,168,217
1956	3,149,799	1955	3,071,307	1954	3,057,561	1953	3,042,335
1952	2,877,987	1951	2,806,842	1950	2,775,962	1949	2,768,243
1948	2,578,246	1947	2,550,153	1946	2,534,725	1945	2,516,293
1944	2,418,554	1943	2,118,150	1942	2,103,860	1941	1,556,253
1940	1,532,763	1939	1,521,223	1938	1,520,280	1937	1,390,583
1936	1,352,517						

Curve: L1 ASL: 100 SSD: 2.10E+13 IV: 18

Year	Balance	Year	Balance	Year	Balance	Year	Balance
2004	99,027,152	2003	98,937,110	2002	98,902,553	2001	98,662,583
2000	98,677,968	1999	98,069,063	1998	84,199,438	1997	79,039,390
1996	78,639,674	1995	78,518,787	1994	77,318,384	1993	74,279,874
1992	72,985,435	1991	71,386,606	1990	70,891,140	1989	69,857,512
1988	69,477,904	1987	69,274,915	1986	69,305,806	1985	69,184,760
1984	69,187,849	1983	22,438,321	1982	22,315,971	1981	21,057,242
1980	20,440,918	1979	20,013,727	1978	19,843,782	1977	19,428,398
1976	19,144,238	1975	18,662,703	1974	18,321,893	1973	18,280,304
1972	18,245,510	1971	18,146,940	1970	17,766,556	1969	11,871,960
1968	8,165,380	1967	7,866,005	1966	6,611,484	1965	6,227,693
1964	5,474,496	1963	4,598,347	1962	4,510,871	1961	3,827,396
1960	3,769,939	1959	3,719,562	1958	3,517,349	1957	3,154,322
1956	3,136,621	1955	3,058,860	1954	3,045,858	1953	3,031,410
1952	2,867,844	1951	2,797,468	1950	2,767,360	1949	2,760,418
1948	2,571,180	1947	2,543,829	1946	2,529,149	1945	2,511,465
1944	2,414,458	1943	2,114,725	1942	2,101,056	1941	1,553,989
1940	1,530,960	1939	1,519,867	1938	1,519,360	1937	1,390,062
1936	1,352,349						

Curve: S1 ASL: 76 SSD: 2.21E+13 IV: 19

Year	Balance	Year	Balance	Year	Balance	Year	Balance
2004	99,326,103	2003	99,254,184	2002	99,232,745	2001	99,001,335
2000	99,019,579	1999	98,409,625	1998	84,539,252	1997	79,378,763
1996	78,975,947	1995	78,848,327	1994	77,637,417	1993	74,585,833
1992	73,276,440	1991	71,660,244	1990	71,144,927	1989	70,089,589
1988	69,686,597	1987	69,458,516	1986	69,463,344	1985	69,315,831
1984	69,292,653	1983	22,529,997	1982	22,406,896	1981	21,146,751
1980	20,528,426	1979	20,098,518	1978	19,925,117	1977	19,505,540
1976	19,216,588	1975	18,729,809	1974	18,383,346	1973	18,335,691
1972	18,294,502	1971	18,189,314	1970	17,802,373	1969	11,902,989

1968	8,194,179	1967	7,893,516	1966	6,637,985	1965	6,253,445
1964	5,499,633	1963	4,623,170	1962	4,535,469	1961	3,851,777
1960	3,794,146	1959	3,743,459	1958	3,540,804	1957	3,177,341
1956	3,159,164	1955	3,080,750	1954	3,066,979	1953	3,051,646
1952	2,887,076	1951	2,815,641	1950	2,784,398	1949	2,776,202
1948	2,585,667	1947	2,557,004	1946	2,540,941	1945	2,521,815
1944	2,423,367	1943	2,122,274	1942	2,107,302	1941	1,559,086
1940	1,535,057	1939	1,522,964	1938	1,521,479	1937	1,391,272
1936	1,352,739						

**Curve: L2 ASL: 73 SSD: 2.22E+13 IV: 19**

Year	Balance	Year	Balance	Year	Balance	Year	Balance
2004	99,259,103	2003	99,196,092	2002	99,181,452	2001	98,955,416
2000	98,977,601	1999	98,370,335	1998	84,501,140	1997	79,340,853
1996	78,937,844	1995	78,808,889	1994	77,596,633	1993	74,544,572
1992	73,234,022	1991	71,617,669	1990	71,103,295	1989	70,048,960
1988	69,647,940	1987	69,422,721	1986	69,430,842	1985	69,287,321
1984	69,268,521	1983	22,510,444	1982	22,391,809	1981	21,135,893
1980	20,521,585	1979	20,095,451	1978	19,925,460	1977	19,508,965
1976	19,222,802	1975	18,738,418	1974	18,393,990	1973	18,348,062
1972	18,308,244	1971	18,204,079	1970	17,817,897	1969	11,918,920
1968	8,210,200	1967	7,909,379	1966	6,653,375	1965	6,268,172
1964	5,513,582	1963	4,636,139	1962	4,547,407	1961	3,862,679
1960	3,803,960	1959	3,752,249	1958	3,548,653	1957	3,184,301
1956	3,165,305	1955	3,086,151	1954	3,071,698	1953	3,055,735
1952	2,890,592	1951	2,818,653	1950	2,786,929	1949	2,778,311
1948	2,587,419	1947	2,558,413	1946	2,542,058	1945	2,522,704
1944	2,424,030	1943	2,122,761	1942	2,107,657	1941	1,559,318
1940	1,535,199	1939	1,523,044	1938	1,521,513	1937	1,391,282
1936	1,352,740						

**Curve: S1.5 ASL: 68 SSD: 2.25E+13 IV: 19**

Year	Balance	Year	Balance	Year	Balance	Year	Balance
2004	99,290,639	2003	99,229,895	2002	99,217,031	2001	98,991,313
2000	99,014,379	1999	98,407,444	1998	84,538,123	1997	79,378,566
1996	78,975,399	1995	78,846,982	1994	77,634,806	1993	74,582,565
1992	73,271,705	1991	71,654,857	1990	71,139,070	1989	70,083,777
1988	69,681,031	1987	69,454,075	1986	69,460,159	1985	69,314,181
1984	69,292,675	1983	22,531,604	1982	22,409,755	1981	21,150,639
1980	20,533,147	1979	20,104,030	1978	19,931,221	1977	19,512,301
1976	19,223,946	1975	18,737,793	1974	18,391,965	1973	18,345,024
1972	18,304,509	1971	18,200,030	1970	17,813,758	1969	11,914,923
1968	8,206,574	1967	7,906,203	1966	6,650,824	1965	6,266,275
1964	5,512,372	1963	4,635,620	1962	4,547,565	1961	3,863,386
1960	3,805,209	1959	3,753,844	1958	3,550,524	1957	3,186,306
1956	3,167,346	1955	3,088,162	1954	3,073,610	1953	3,057,492
1952	2,892,184	1951	2,820,050	1950	2,788,116	1949	2,779,318
1948	2,588,217	1947	2,559,053	1946	2,542,538	1945	2,523,052



1944	2,424,272	1943	2,122,921	1942	2,107,742	1941	1,559,367
1940	1,535,213	1939	1,523,047	1938	1,521,511	1937	1,391,279
1936	1,352,740						

**Curve: L3 ASL: 59 SSD: 2.28E+13 IV: 19**

Year	Balance	Year	Balance	Year	Balance	Year	Balance
2004	99,119,306	2003	99,079,824	2002	99,080,875	2001	98,863,996
2000	98,891,703	1999	98,285,262	1998	84,413,734	1997	79,250,013
1996	78,841,907	1995	78,707,840	1994	77,491,296	1993	74,435,501
1992	73,123,322	1991	71,507,057	1990	70,994,907	1989	69,945,754
1988	69,552,153	1987	69,336,685	1986	69,356,377	1985	69,225,129
1984	69,218,823	1983	22,472,536	1982	22,364,547	1981	21,118,121
1980	20,512,130	1979	20,093,244	1978	19,929,570	1977	19,518,429
1976	19,236,839	1975	18,756,443	1974	18,415,414	1973	18,372,406
1972	18,335,140	1971	18,233,143	1970	17,848,600	1969	11,950,850
1968	8,242,908	1967	7,942,318	1966	6,686,228	1965	6,300,646
1964	5,545,299	1963	4,666,946	1962	4,577,099	1961	3,891,060
1960	3,830,914	1959	3,777,624	1958	3,572,350	1957	3,206,220
1956	3,185,379	1955	3,104,390	1954	3,088,075	1953	3,070,271
1952	2,903,376	1951	2,829,713	1950	2,796,364	1949	2,786,245
1948	2,593,946	1947	2,563,681	1946	2,546,212	1945	2,525,875
1944	2,426,382	1943	2,124,423	1942	2,108,762	1941	1,560,004
1940	1,535,576	1939	1,523,223	1938	1,521,581	1937	1,391,296
1936	1,352,741						

**Curve: S2 ASL: 61 SSD: 2.29E+13 IV: 19**

Year	Balance	Year	Balance	Year	Balance	Year	Balance
2004	99,291,254	2003	99,247,203	2002	99,244,856	2001	99,026,337
2000	99,053,741	1999	98,447,251	1998	84,576,674	1997	79,413,770
1996	79,005,782	1995	78,871,672	1994	77,653,825	1993	74,595,332
1992	73,279,444	1991	71,657,676	1990	71,138,298	1989	70,080,462
1988	69,676,450	1987	69,449,196	1986	69,456,291	1985	69,311,964
1984	69,292,546	1983	22,533,529	1982	22,413,247	1981	21,155,334
1980	20,538,913	1979	20,110,574	1978	19,938,644	1977	19,520,583
1976	19,233,178	1975	18,748,128	1974	18,403,587	1973	18,358,005
1972	18,319,064	1971	18,216,177	1970	17,831,482	1969	11,934,154
1968	8,227,012	1967	7,927,624	1966	6,672,956	1965	6,288,804
1964	5,535,020	1963	4,658,176	1962	4,569,681	1961	3,884,925
1960	3,825,899	1959	3,773,542	1958	3,569,077	1957	3,203,597
1956	3,183,269	1955	3,102,694	1954	3,086,689	1953	3,069,129
1952	2,902,422	1951	2,828,900	1950	2,795,678	1949	2,785,657
1948	2,593,442	1947	2,563,263	1946	2,545,865	1945	2,525,595
1944	2,426,173	1943	2,124,276	1942	2,108,669	1941	1,559,956
1940	1,535,556	1939	1,523,217	1938	1,521,580	1937	1,391,296
1936	1,352,741						

**Curve: R3 ASL: 62 SSD: 2.30E+13 IV: 19**

Year	Balance	Year	Balance	Year	Balance	Year	Balance
2004	99,232,922	2003	99,162,462	2002	99,142,548	2001	98,912,265
2000	98,933,099	1999	98,326,145	1998	84,456,751	1997	79,296,752
1996	78,894,783	1995	78,768,878	1994	77,561,347	1993	74,514,082
1992	73,209,781	1991	71,599,963	1990	71,092,509	1989	70,046,106
1988	69,653,011	1987	69,436,105	1986	69,452,692	1985	69,317,133
1984	69,305,664	1983	22,548,393	1982	22,424,938	1981	21,164,178
1980	20,545,320	1979	20,114,960	1978	19,941,264	1977	19,521,748
1976	19,233,054	1975	18,746,806	1974	18,401,135	1973	18,354,507
1972	18,314,607	1971	18,210,832	1970	17,825,305	1969	11,926,506
1968	8,217,062	1967	7,915,317	1966	6,658,475	1965	6,272,460
1964	5,517,090	1963	4,638,853	1962	4,549,341	1961	3,863,837
1960	3,804,368	1959	3,751,941	1958	3,547,647	1957	3,182,600
1956	3,162,917	1955	3,083,164	1954	3,068,204	1953	3,051,812
1952	2,886,361	1951	2,814,186	1950	2,782,325	1949	2,773,702
1948	2,582,871	1947	2,554,023	1946	2,537,927	1945	2,518,895
1944	2,420,635	1943	2,119,783	1942	2,105,107	1941	1,557,187
1940	1,533,445	1939	1,521,695	1938	1,520,586	1937	1,390,750
1936	1,352,572						

Curve: S3 ASL: 54 SSD: 2.32E+13 IV: 19

Year	Balance	Year	Balance	Year	Balance	Year	Balance
2004	99,226,644	2003	99,174,487	2002	99,163,397	2001	98,935,040
2000	98,952,349	1999	98,337,659	1998	84,459,770	1997	79,291,150
1996	78,879,727	1995	78,743,805	1994	77,526,252	1993	74,470,149
1992	73,158,143	1991	71,541,928	1990	71,029,472	1989	69,979,386
1988	69,584,035	1987	69,366,085	1986	69,382,852	1985	69,248,597
1984	69,239,440	1983	22,490,668	1982	22,380,685	1981	21,132,843
1980	20,526,194	1979	20,107,304	1978	19,944,215	1977	19,534,288
1976	19,254,285	1975	18,775,600	1974	18,436,450	1973	18,395,300
1972	18,359,715	1971	18,259,226	1970	17,875,970	1969	11,979,125
1968	8,271,672	1967	7,971,255	1966	6,714,925	1965	6,328,696
1964	5,572,407	1963	4,692,762	1962	4,601,301	1961	3,913,424
1960	3,851,282	1959	3,795,882	1958	3,588,458	1957	3,220,210
1956	3,197,308	1955	3,114,355	1954	3,096,246	1953	3,076,821
1952	2,908,492	1951	2,833,614	1950	2,799,249	1949	2,788,296
1948	2,595,345	1947	2,564,587	1946	2,546,755	1945	2,526,169
1944	2,426,522	1943	2,124,475	1942	2,108,775	1941	1,560,005
1940	1,535,576	1939	1,523,223	1938	1,521,581	1937	1,391,296
1936	1,352,741						

Curve: L4 ASL: 52 SSD: 2.33E+13 IV: 19

Year	Balance	Year	Balance	Year	Balance	Year	Balance
2004	99,178,526	2003	99,101,916	2002	99,064,992	2001	98,810,944
2000	98,804,154	1999	98,168,083	1998	84,272,353	1997	79,090,056
1996	78,669,456	1995	78,528,705	1994	77,310,479	1993	74,257,571
1992	72,952,475	1991	71,346,566	1990	70,847,448	1989	69,813,300

1988	69,435,999	1987	69,237,557	1986	69,274,685	1985	69,161,055
1984	69,172,211	1983	22,442,788	1982	22,350,484	1981	21,118,071
1980	20,524,149	1979	20,115,119	1978	19,959,095	1977	19,553,702
1976	19,276,073	1975	18,798,127	1974	18,458,472	1973	18,415,989
1972	18,378,635	1971	18,276,221	1970	17,891,076	1969	11,992,499
1968	8,283,554	1967	7,981,840	1966	6,724,387	1965	6,337,182
1964	5,580,034	1963	4,699,618	1962	4,607,461	1961	3,918,939
1960	3,856,165	1959	3,800,152	1958	3,592,133	1957	3,223,318
1956	3,199,881	1955	3,116,441	1954	3,097,892	1953	3,078,076
1952	2,909,410	1951	2,834,254	1950	2,799,670	1949	2,788,556
1948	2,595,497	1947	2,564,670	1946	2,546,798	1945	2,526,189
1944	2,426,531	1943	2,124,479	1942	2,108,776	1941	1,560,005
1940	1,535,576	1939	1,523,223	1938	1,521,581	1937	1,391,296
1936	1,352,741						

Curve: L5 ASL: 49 SSD: 2.34E+13 IV: 19

Year	Balance	Year	Balance	Year	Balance	Year	Balance
2004	99,392,849	2003	99,280,700	2002	99,207,107	2001	98,914,711
2000	98,867,686	1999	98,189,901	1998	84,251,840	1997	79,027,754
1996	78,567,433	1995	78,390,657	1994	77,141,661	1993	74,064,449
1992	72,742,377	1991	71,127,286	1990	70,626,899	1989	69,599,215
1988	69,235,678	1987	69,057,556	1986	69,120,504	1985	69,036,792
1984	69,080,282	1983	22,383,798	1982	22,323,339	1981	21,120,113
1980	20,551,448	1979	20,162,918	1978	20,022,312	1977	19,627,454
1976	19,356,073	1975	18,880,900	1974	18,541,403	1973	18,497,159
1972	18,456,619	1971	18,349,932	1970	17,959,652	1969	12,055,254
1968	8,339,978	1967	8,031,621	1966	6,767,429	1965	6,373,598
1964	5,610,137	1963	4,723,889	1962	4,626,512	1961	3,933,474
1960	3,866,924	1959	3,807,858	1958	3,597,462	1957	3,226,862
1956	3,202,133	1955	3,117,795	1954	3,098,650	1953	3,078,462
1952	2,909,583	1951	2,834,318	1950	2,799,688	1949	2,788,559
1948	2,595,497	1947	2,564,670	1946	2,546,798	1945	2,526,189
1944	2,426,531	1943	2,124,479	1942	2,108,776	1941	1,560,005
1940	1,535,576	1939	1,523,223	1938	1,521,581	1937	1,391,296
1936	1,352,741						

Curve: S4 ASL: 50 SSD: 2.35E+13 IV: 19

Year	Balance	Year	Balance	Year	Balance	Year	Balance
2004	99,358,471	2003	99,261,068	2002	99,203,657	2001	98,928,985
2000	98,901,273	1999	98,244,132	1998	84,327,615	1997	79,125,267
1996	78,686,064	1995	78,528,825	1994	77,296,813	1993	74,233,144
1992	72,920,415	1991	71,309,911	1990	70,809,011	1989	69,775,579
1988	69,401,145	1987	69,207,311	1986	69,250,371	1985	69,143,578
1984	69,162,103	1983	22,440,357	1982	22,356,002	1981	21,131,754
1980	20,546,112	1979	20,145,285	1978	19,997,109	1977	19,598,884
1976	19,327,412	1975	18,854,310	1974	18,517,989	1973	18,477,190
1972	18,439,840	1971	18,335,852	1970	17,947,756	1969	12,045,119
1968	8,331,304	1967	8,024,216	1966	6,761,176	1965	6,368,420

1964	5,605,967	1963	4,720,650	1962	4,624,107	1961	3,931,781
1960	3,865,803	1959	3,807,164	1958	3,597,062	1957	3,226,645
1956	3,202,022	1955	3,117,740	1954	3,098,625	1953	3,078,451
1952	2,909,579	1951	2,834,317	1950	2,799,688	1949	2,788,559
1948	2,595,497	1947	2,564,670	1946	2,546,798	1945	2,526,189
1944	2,426,531	1943	2,124,479	1942	2,108,776	1941	1,560,005
1940	1,535,576	1939	1,523,223	1938	1,521,581	1937	1,391,296
1936	1,352,741						

**Curve: S5 ASL: 48 SSD: 2.45E+13 IV: 20**

Year	Balance	Year	Balance	Year	Balance	Year	Balance
2004	99,634,905	2003	99,471,656	2002	99,342,810	2001	98,995,213
2000	98,896,316	1999	98,172,213	1998	84,194,774	1997	78,938,893
1996	78,454,439	1995	78,260,946	1994	77,002,170	1993	73,921,488
1992	72,601,646	1991	70,993,847	1990	70,505,101	1989	69,492,618
1988	69,146,877	1987	68,988,133	1986	69,071,023	1985	69,006,906
1984	69,068,905	1983	22,389,388	1982	22,344,051	1981	21,154,010
1980	20,596,580	1979	20,217,274	1978	20,083,742	1977	19,693,566
1976	19,424,244	1975	18,948,391	1974	18,605,565	1973	18,555,701
1972	18,507,853	1971	18,392,890	1970	17,994,144	1969	12,081,769
1968	8,359,456	1967	8,045,247	1966	6,776,460	1965	6,379,223
1964	5,613,392	1963	4,725,608	1962	4,627,320	1961	3,933,798
1960	3,867,029	1959	3,807,882	1958	3,597,466	1957	3,226,862
1956	3,202,133	1955	3,117,795	1954	3,098,650	1953	3,078,462
1952	2,909,583	1951	2,834,318	1950	2,799,688	1949	2,788,559
1948	2,595,497	1947	2,564,670	1946	2,546,798	1945	2,526,189
1944	2,426,531	1943	2,124,479	1942	2,108,776	1941	1,560,005
1940	1,535,576	1939	1,523,223	1938	1,521,581	1937	1,391,296
1936	1,352,741						

**Curve: R5 ASL: 49 SSD: 2.54E+13 IV: 20**

Year	Balance	Year	Balance	Year	Balance	Year	Balance
2004	99,479,363	2003	99,327,766	2002	99,219,583	2001	98,898,709
2000	98,830,409	1999	98,139,111	1998	84,195,060	1997	78,971,610
1996	78,517,380	1995	78,351,484	1994	77,117,851	1993	74,060,007
1992	72,760,403	1991	71,169,574	1990	70,693,583	1989	69,688,615
1988	69,344,339	1987	69,180,513	1986	69,251,754	1985	69,169,947
1984	69,209,250	1983	22,503,471	1982	22,430,106	1981	21,212,043
1980	20,628,243	1979	20,225,581	1978	20,072,676	1977	19,667,658
1976	19,388,125	1975	18,906,415	1974	18,561,530	1973	18,512,675
1972	18,468,082	1971	18,357,842	1970	17,964,538	1969	12,057,699
1968	8,340,587	1967	8,030,972	1966	6,766,033	1965	6,371,874
1964	5,608,400	1963	4,722,346	1962	4,625,279	1961	3,932,580
1960	3,866,341	1959	3,807,517	1958	3,597,287	1957	3,226,782
1956	3,202,102	1955	3,117,785	1954	3,098,648	1953	3,078,462
1952	2,909,583	1951	2,834,318	1950	2,799,688	1949	2,788,559
1948	2,595,497	1947	2,564,670	1946	2,546,798	1945	2,526,189
1944	2,426,531	1943	2,124,479	1942	2,108,776	1941	1,560,005

1940 1,535,576 1939 1,523,223 1938 1,521,581 1937 1,391,296  
1936 1,352,741

**Curve: S0 ASL: 100 SSD: 2.58E+13 IV: 20**

Year	Balance	Year	Balance	Year	Balance	Year	Balance
2004	98,542,691	2003	98,474,286	2002	98,462,426	2001	98,245,575
2000	98,283,619	1999	97,695,829	1998	83,848,824	1997	78,715,117
1996	78,343,030	1995	78,249,554	1994	77,075,927	1993	74,063,875
1992	72,795,369	1991	71,221,359	1990	70,749,017	1989	69,736,163
1988	69,374,348	1987	69,185,230	1986	69,225,010	1985	69,106,525
1984	69,103,560	1983	22,351,539	1982	22,235,276	1981	20,982,725
1980	20,372,792	1979	19,952,006	1978	19,788,284	1977	19,378,823
1976	19,100,202	1975	18,623,725	1974	18,287,403	1973	18,249,485
1972	18,217,259	1971	18,119,878	1970	17,738,972	1969	11,843,478
1968	8,137,089	1967	7,838,273	1966	6,584,273	1965	6,201,065
1964	5,448,446	1963	4,573,071	1962	4,486,489	1961	3,804,029
1960	3,747,751	1959	3,698,574	1958	3,497,592	1957	3,135,914
1956	3,119,663	1955	3,043,384	1954	3,031,878	1953	3,018,902
1952	2,856,799	1951	2,787,887	1950	2,759,201	1949	2,753,598
1948	2,565,636	1947	2,539,497	1946	2,525,907	1945	2,509,155
1944	2,412,909	1943	2,113,819	1942	2,100,651	1941	1,554,015
1940	1,531,386	1939	1,520,543	1938	1,520,098	1937	1,390,672
1936	1,352,600						

**Curve: R4 ASL: 54 SSD: 2.61E+13 IV: 20**

Year	Balance	Year	Balance	Year	Balance	Year	Balance
2004	99,287,780	2003	99,207,779	2002	99,177,498	2001	98,937,617
2000	98,950,195	1999	98,336,602	1998	84,464,602	1997	79,305,715
1996	78,906,963	1995	78,785,694	1994	77,583,781	1993	74,543,308
1992	73,246,192	1991	71,643,390	1990	71,142,327	1989	70,101,121
1988	69,711,898	1987	69,497,253	1986	69,514,570	1985	69,378,262
1984	69,364,756	1983	22,609,440	1982	22,491,347	1981	21,234,687
1980	20,618,902	1979	20,190,792	1978	20,018,534	1977	19,599,602
1976	19,310,858	1975	18,823,802	1974	18,476,747	1973	18,428,229
1972	18,385,876	1971	18,279,263	1970	17,890,550	1969	11,988,889
1968	8,277,260	1967	7,973,321	1966	6,714,103	1965	6,325,574
1964	5,567,528	1963	4,686,608	1962	4,594,307	1961	3,905,966
1960	3,843,664	1959	3,788,356	1958	3,581,220	1957	3,213,405
1956	3,191,037	1955	3,108,685	1954	3,091,206	1953	3,072,413
1952	2,904,695	1951	2,830,393	1950	2,796,557	1949	2,786,080
1948	2,593,547	1947	2,563,148	1946	2,545,624	1945	2,525,294
1944	2,425,860	1943	2,123,982	1942	2,108,417	1941	1,559,749
1940	1,535,397	1939	1,523,104	1938	1,521,509	1937	1,391,260
1936	1,352,731						

**Curve: S6 ASL: 46 SSD: 2.62E+13 IV: 21**

Year	Balance	Year	Balance	Year	Balance	Year	Balance
2004	99,640,573	2003	99,454,164	2002	99,300,805	2001	98,927,952
2000	98,803,260	1999	98,052,725	1998	84,047,689	1997	78,762,590
1996	78,247,342	1995	78,021,795	1994	76,730,634	1993	73,618,497
1992	72,269,927	1991	70,637,545	1990	70,129,567	1989	69,103,977
1988	68,752,011	1987	68,595,521	1986	68,691,702	1985	68,653,890
1984	68,756,794	1983	22,132,157	1982	22,152,237	1981	21,031,514
1980	20,539,147	1979	20,213,632	1978	20,118,213	1977	19,749,430
1976	19,486,921	1975	19,006,930	1974	18,654,179	1973	18,592,617
1972	18,533,846	1971	18,410,039	1970	18,004,818	1969	12,088,043
1968	8,362,953	1967	8,047,097	1966	6,777,385	1965	6,379,661
1964	5,613,586	1963	4,725,688	1962	4,627,351	1961	3,933,809
1960	3,867,032	1959	3,807,883	1958	3,597,466	1957	3,226,862
1956	3,202,133	1955	3,117,795	1954	3,098,650	1953	3,078,462
1952	2,909,583	1951	2,834,318	1950	2,799,688	1949	2,788,559
1948	2,595,497	1947	2,564,670	1946	2,546,798	1945	2,526,189
1944	2,426,531	1943	2,124,479	1942	2,108,776	1941	1,560,005
1940	1,535,576	1939	1,523,223	1938	1,521,581	1937	1,391,296
1936	1,352,741						

Curve: R1.5 ASL: 100 SSD: 2.71E+13 IV: 21

Year	Balance	Year	Balance	Year	Balance	Year	Balance
2004	98,523,531	2003	98,408,550	2002	98,357,400	2001	98,108,868
2000	98,123,556	1999	97,521,402	1998	83,657,261	1997	78,498,216
1996	78,102,754	1995	77,992,119	1994	76,807,310	1993	73,787,712
1992	72,515,108	1991	70,941,670	1990	70,475,363	1989	69,474,747
1988	69,131,850	1987	68,969,496	1986	69,044,928	1985	68,972,137
1984	69,026,951	1983	22,304,066	1982	22,182,377	1981	20,925,214
1980	20,310,994	1979	19,886,874	1978	19,721,159	1977	19,311,111
1976	19,033,261	1975	18,558,902	1974	18,226,036	1973	18,193,352
1972	18,168,543	1971	18,080,943	1970	17,712,240	1969	11,826,456
1968	8,123,659	1967	7,826,268	1966	6,573,342	1965	6,190,666
1964	5,438,366	1963	4,562,568	1962	4,475,265	1961	3,791,878
1960	3,734,421	1959	3,684,319	1958	3,482,556	1957	3,119,951
1956	3,102,739	1955	3,025,690	1954	3,013,616	1953	3,000,339
1952	2,838,084	1951	2,769,113	1950	2,740,569	1949	2,735,376
1948	2,547,965	1947	2,522,492	1946	2,509,835	1945	2,494,312
1944	2,399,541	1943	2,101,937	1942	2,090,324	1941	1,545,078
1940	1,523,612	1939	1,514,135	1938	1,515,302	1937	1,387,658
1936	1,351,547						

Curve: SQ ASL: 46 SSD: 3.01E+13 IV: 22

Year	Balance	Year	Balance	Year	Balance	Year	Balance
2004	99,773,145	2003	99,763,555	2002	99,477,117	2001	99,058,189
2000	98,842,404	1999	98,016,132	1998	84,093,814	1997	78,803,828
1996	78,245,583	1995	77,952,926	1994	76,772,879	1993	73,603,119
1992	72,174,652	1991	70,453,955	1990	69,924,528	1989	69,067,670
1988	68,586,454	1987	68,822,349	1986	68,774,791	1985	68,569,906

1984	68,484,837	1983	21,793,926	1982	21,654,963	1981	21,696,992
1980	21,031,882	1979	20,558,762	1978	20,345,515	1977	19,889,365
1976	19,566,918	1975	19,049,492	1974	18,675,104	1973	18,602,036
1972	18,537,697	1971	18,411,455	1970	18,005,280	1969	12,088,182
1968	8,362,990	1967	8,047,105	1966	6,777,387	1965	6,379,661
1964	5,613,586	1963	4,725,688	1962	4,627,351	1961	3,933,809
1960	3,867,032	1959	3,807,883	1958	3,597,466	1957	3,226,862
1956	3,202,133	1955	3,117,795	1954	3,098,650	1953	3,078,462
1952	2,909,583	1951	2,834,318	1950	2,799,688	1949	2,788,559
1948	2,595,497	1947	2,564,670	1946	2,546,798	1945	2,526,189
1944	2,426,531	1943	2,124,479	1942	2,108,776	1941	1,560,005
1940	1,535,576	1939	1,523,223	1938	1,521,581	1937	1,391,296
1936	1,352,741						

**Curve: L0.5                      ASL: 100                      SSD: 6.77E+13                      IV: 33**

Year	Balance	Year	Balance	Year	Balance	Year	Balance
2004	96,941,162	2003	96,952,747	2002	97,020,261	2001	96,882,107
2000	96,998,053	1999	96,486,901	1998	82,710,377	1997	77,639,901
1996	77,328,888	1995	77,296,111	1994	76,182,529	1993	73,228,958
1992	72,017,425	1991	70,499,525	1990	70,082,796	1989	69,125,288
1988	68,818,651	1987	68,684,738	1986	68,779,661	1985	68,715,774
1984	68,765,425	1983	22,047,862	1982	21,949,254	1981	20,713,765
1980	20,120,174	1979	19,715,347	1978	19,567,368	1977	19,173,456
1976	18,910,168	1975	18,448,793	1974	18,127,345	1973	18,104,226
1972	18,086,789	1971	18,004,073	1970	17,637,366	1969	11,753,482
1968	8,055,119	1967	7,762,804	1966	6,514,654	1965	6,136,623
1964	5,388,675	1963	4,517,314	1962	4,434,335	1961	3,755,143
1960	3,701,829	1959	3,655,533	1958	3,457,294	1957	3,098,123
1956	3,084,221	1955	3,010,236	1954	3,000,980	1953	2,990,231
1952	2,830,280	1951	2,763,435	1950	2,736,782	1949	2,733,200
1948	2,547,195	1947	2,522,949	1946	2,511,250	1945	2,496,388
1944	2,401,990	1943	2,104,609	1942	2,093,032	1941	1,547,787
1940	1,526,361	1939	1,516,718	1938	1,517,468	1937	1,389,173
1936	1,352,118						

**Curve: R1                      ASL: 100                      SSD: 7.65E+13                      IV: 35**

Year	Balance	Year	Balance	Year	Balance	Year	Balance
2004	96,930,395	2003	96,889,316	2002	96,912,617	2001	96,739,009
2000	96,829,047	1999	96,302,456	1998	82,508,408	1997	77,412,136
1996	77,077,577	1995	77,027,998	1994	75,904,010	1993	72,943,781
1992	71,729,056	1991	70,212,561	1990	69,802,555	1989	68,857,782
1988	68,570,283	1987	68,463,194	1986	68,593,916	1985	68,576,440
1984	68,686,530	1983	21,999,902	1982	21,895,448	1981	20,655,055
1980	20,056,930	1979	19,648,559	1978	19,498,423	1977	19,103,786
1976	18,841,124	1975	18,381,693	1974	18,063,463	1973	18,045,297
1972	18,035,006	1971	17,961,895	1970	17,607,503	1969	11,733,485
1968	8,038,562	1967	7,747,437	1966	6,500,169	1965	6,122,506
1964	5,374,780	1963	4,502,914	1962	4,419,171	1961	3,739,051

1960	3,684,576	1959	3,637,431	1958	3,438,539	1957	3,078,589
1956	3,063,889	1955	2,989,326	1954	2,979,713	1953	2,968,895
1952	2,809,035	1951	2,742,371	1950	2,716,098	1949	2,713,166
1948	2,527,941	1947	2,504,569	1946	2,493,997	1945	2,480,545
1944	2,387,799	1943	2,092,059	1942	2,082,181	1941	1,538,439
1940	1,518,244	1939	1,510,021	1938	1,512,436	1937	1,385,985
1936	1,350,995						

**Curve: S-0.5 ASL: 100 SSD: 1.38E+14 IV: 47**

Year	Balance	Year	Balance	Year	Balance	Year	Balance
2004	95,715,406	2003	95,749,067	2002	95,844,631	2001	95,740,644
2000	95,897,363	1999	95,434,035	1998	81,700,029	1997	76,661,327
1996	76,382,224	1995	76,385,850	1994	75,312,611	1993	72,400,702
1992	71,231,889	1991	69,758,870	1990	69,389,832	1989	68,483,369
1988	68,231,349	1987	68,156,709	1986	68,316,484	1985	68,324,140
1984	68,454,424	1983	21,784,290	1982	21,695,143	1981	20,469,396
1980	19,885,284	1979	19,490,317	1978	19,352,962	1977	18,970,453
1976	18,719,242	1975	18,270,560	1974	17,962,358	1973	17,953,462
1972	17,951,606	1971	17,885,983	1970	17,537,966	1969	11,669,286
1968	7,979,059	1967	7,692,220	1966	6,448,892	1965	6,074,872
1964	5,330,517	1963	4,461,804	1962	4,381,036	1961	3,703,736
1960	3,651,960	1959	3,607,391	1958	3,410,948	1957	3,053,337
1956	3,040,883	1955	2,968,475	1954	2,960,920	1953	2,952,060
1952	2,794,054	1951	2,729,145	1950	2,704,529	1949	2,703,148
1948	2,519,367	1947	2,497,334	1946	2,487,992	1945	2,475,653
1944	2,383,892	1943	2,089,010	1942	2,079,867	1941	1,536,748
1940	1,517,089	1939	1,509,314	1938	1,512,078	1937	1,385,863
1936	1,350,980						

**Curve: L0 ASL: 100 SSD: 1.86E+14 IV: 55**

Year	Balance	Year	Balance	Year	Balance	Year	Balance
2004	94,855,157	2003	94,968,399	2002	95,138,005	2001	95,101,670
2000	95,318,221	1999	94,904,799	1998	81,221,306	1997	76,240,449
1996	76,018,137	1995	76,073,474	1994	75,046,740	1993	72,178,064
1992	71,049,453	1991	69,612,496	1990	69,274,500	1989	68,393,115
1988	68,159,407	1987	68,094,570	1986	68,253,530	1985	68,246,804
1984	68,343,029	1983	21,657,410	1982	21,582,547	1981	20,370,296
1980	19,799,444	1979	19,416,972	1978	19,290,960	1977	18,918,528
1976	18,676,111	1975	18,234,897	1974	17,932,805	1973	17,928,152
1972	17,928,072	1971	17,861,209	1970	17,508,181	1969	11,635,008
1968	7,944,861	1967	7,659,606	1966	6,417,826	1965	6,045,554
1964	5,302,855	1963	4,436,282	1962	4,357,801	1961	3,682,893
1960	3,633,722	1959	3,591,507	1958	3,397,242	1957	3,041,925
1956	3,031,819	1955	2,961,613	1954	2,956,104	1953	2,949,053
1952	2,792,718	1951	2,729,403	1950	2,706,204	1949	2,705,983
1948	2,523,211	1947	2,502,070	1946	2,493,353	1945	2,481,312
1944	2,389,522	1943	2,094,494	1942	2,085,010	1941	1,541,586
1940	1,521,762	1939	1,513,568	1938	1,515,576	1937	1,388,283



1936 1,351,888

**Curve: R0.5 ASL: 100 SSD: 2.04E+14 IV: 57**

Year	Balance	Year	Balance	Year	Balance	Year	Balance
2004	94,909,284	2003	94,956,611	2002	95,069,756	2001	94,987,387
2000	95,170,073	1999	94,737,343	1998	81,029,869	1997	76,009,898
1996	75,749,525	1995	75,775,066	1994	74,726,668	1993	71,840,679
1992	70,698,736	1991	69,254,463	1990	68,916,594	1989	68,044,185
1988	67,829,335	1987	67,795,710	1986	68,000,942	1985	68,059,077
1984	68,245,894	1983	21,608,484	1982	21,525,237	1981	20,305,564
1980	19,727,357	1979	19,338,600	1978	19,208,036	1977	18,832,935
1976	18,589,702	1975	18,149,545	1974	17,850,391	1973	17,851,371
1972	17,860,482	1971	17,806,991	1970	17,472,227	1969	11,614,287
1968	7,929,795	1967	7,646,803	1966	6,406,840	1965	6,035,593
1964	5,293,684	1963	4,426,726	1962	4,347,378	1961	3,671,248
1960	3,620,373	1959	3,576,820	1958	3,381,422	1957	3,024,675
1956	3,012,998	1955	2,941,448	1954	2,934,838	1953	2,927,057
1952	2,770,172	1951	2,706,387	1950	2,682,979	1949	2,682,933
1948	2,500,520	1947	2,479,870	1946	2,472,038	1945	2,461,349
1944	2,371,337	1943	2,078,130	1942	2,070,631	1941	1,528,961
1940	1,510,518	1939	1,504,054	1938	1,508,247	1937	1,383,519
1936	1,350,177						

**Curve: O1 ASL: 100 SSD: 4.03E+14 IV: 80**

Year	Balance	Year	Balance	Year	Balance	Year	Balance
2004	92,888,169	2003	93,023,878	2002	93,226,885	2001	93,235,757
2000	93,511,120	1999	93,172,249	1998	79,551,297	1997	74,607,650
1996	74,421,483	1995	74,522,164	1994	73,549,330	1993	70,737,583
1992	69,668,467	1991	68,296,415	1990	68,030,658	1989	67,230,606
1988	67,088,406	1987	67,128,224	1986	67,407,968	1985	67,541,739
1984	67,805,277	1983	21,217,060	1982	21,155,024	1981	19,956,074
1980	19,397,786	1979	19,028,643	1978	18,917,657	1977	18,562,094
1976	18,338,288	1975	17,917,403	1974	17,637,326	1973	17,657,451
1972	17,685,961	1971	17,652,092	1970	17,336,959	1969	11,495,095
1968	7,821,031	1967	7,546,171	1966	6,313,514	1965	5,948,681
1964	5,212,589	1963	4,350,539	1962	4,275,585	1961	3,603,446
1960	3,556,171	1959	3,516,209	1958	3,324,305	1957	2,970,762
1956	2,962,106	1955	2,893,567	1954	2,889,964	1953	2,885,218
1952	2,731,309	1951	2,670,404	1950	2,649,859	1949	2,652,701
1948	2,473,099	1947	2,455,172	1946	2,450,079	1945	2,442,152
1944	2,354,876	1943	2,064,202	1942	2,059,082	1941	1,519,483
1940	1,502,793	1939	1,498,087	1938	1,504,057	1937	1,381,054
1936	1,349,359						

**Curve: O2 ASL: 100 SSD: 5.64E+14 IV: 95**

Year	Balance	Year	Balance	Year	Balance	Year	Balance
------	---------	------	---------	------	---------	------	---------

2004	91,589,608	2003	91,789,405	2002	92,056,239	2001	92,128,678
2000	92,467,353	1999	92,191,407	1998	78,628,764	1997	73,737,464
1996	73,601,811	1995	73,752,695	1994	72,829,538	1993	70,066,039
1992	69,043,694	1991	67,717,410	1990	67,496,690	1989	66,741,078
1988	66,642,759	1987	66,726,162	1986	67,049,303	1985	67,226,325
1984	67,532,944	1983	20,973,423	1982	20,925,720	1981	19,740,639
1980	19,195,612	1979	18,839,374	1978	18,741,071	1977	18,397,978
1976	18,186,397	1975	17,777,472	1974	17,509,070	1973	17,540,720
1972	17,580,697	1971	17,558,222	1970	17,254,303	1969	11,421,704
1968	7,753,952	1967	7,484,163	1966	6,256,087	1965	5,895,322
1964	5,162,940	1963	4,304,091	1962	4,232,034	1961	3,562,549
1960	3,517,693	1959	3,480,112	1958	3,290,505	1957	2,939,080
1956	2,932,419	1955	2,865,843	1954	2,864,168	1953	2,861,340
1952	2,709,288	1951	2,650,165	1950	2,631,366	1949	2,635,939
1948	2,458,005	1947	2,441,676	1946	2,438,164	1945	2,431,806
1944	2,346,058	1943	2,056,787	1942	2,052,973	1941	1,514,505
1940	1,498,770	1939	1,495,005	1938	1,501,911	1937	1,379,801
1936	1,348,946						

Curve: O3 ASL: 100 SSD: 1.47E+15 IV: 154

Year	Balance	Year	Balance	Year	Balance	Year	Balance
2004	86,550,735	2003	86,983,250	2002	87,484,607	2001	87,793,078
2000	88,369,313	1999	88,331,950	1998	74,990,169	1997	70,295,734
1996	70,350,927	1995	70,693,341	1994	69,961,293	1993	67,384,539
1992	66,544,379	1991	65,397,560	1990	65,354,600	1989	64,775,810
1988	64,853,475	1987	65,113,101	1986	65,613,248	1985	65,968,106
1984	66,453,347	1983	20,010,458	1982	20,016,947	1981	18,884,597
1980	18,390,154	1979	18,083,461	1978	18,034,249	1977	17,739,789
1976	17,576,215	1975	17,214,570	1974	16,992,637	1973	17,070,522
1972	17,156,908	1971	17,180,923	1970	16,923,104	1969	11,128,408
1968	7,485,844	1967	7,236,007	1966	6,025,921	1965	5,681,058
1964	4,963,154	1963	4,116,688	1962	4,055,804	1961	3,396,532
1960	3,360,967	1959	3,332,597	1958	3,151,925	1957	2,808,736
1956	2,809,856	1955	2,750,983	1954	2,756,941	1953	2,761,755
1952	2,617,153	1951	2,565,208	1950	2,553,496	1949	2,565,145
1948	2,394,061	1947	2,384,326	1946	2,387,385	1945	2,387,587
1944	2,308,279	1943	2,024,942	1942	2,026,667	1941	1,493,008
1940	1,481,336	1939	1,481,606	1938	1,492,549	1937	1,374,318
1936	1,347,133						

Curve: O4 ASL: 100 SSD: 3.04E+15 IV: 221

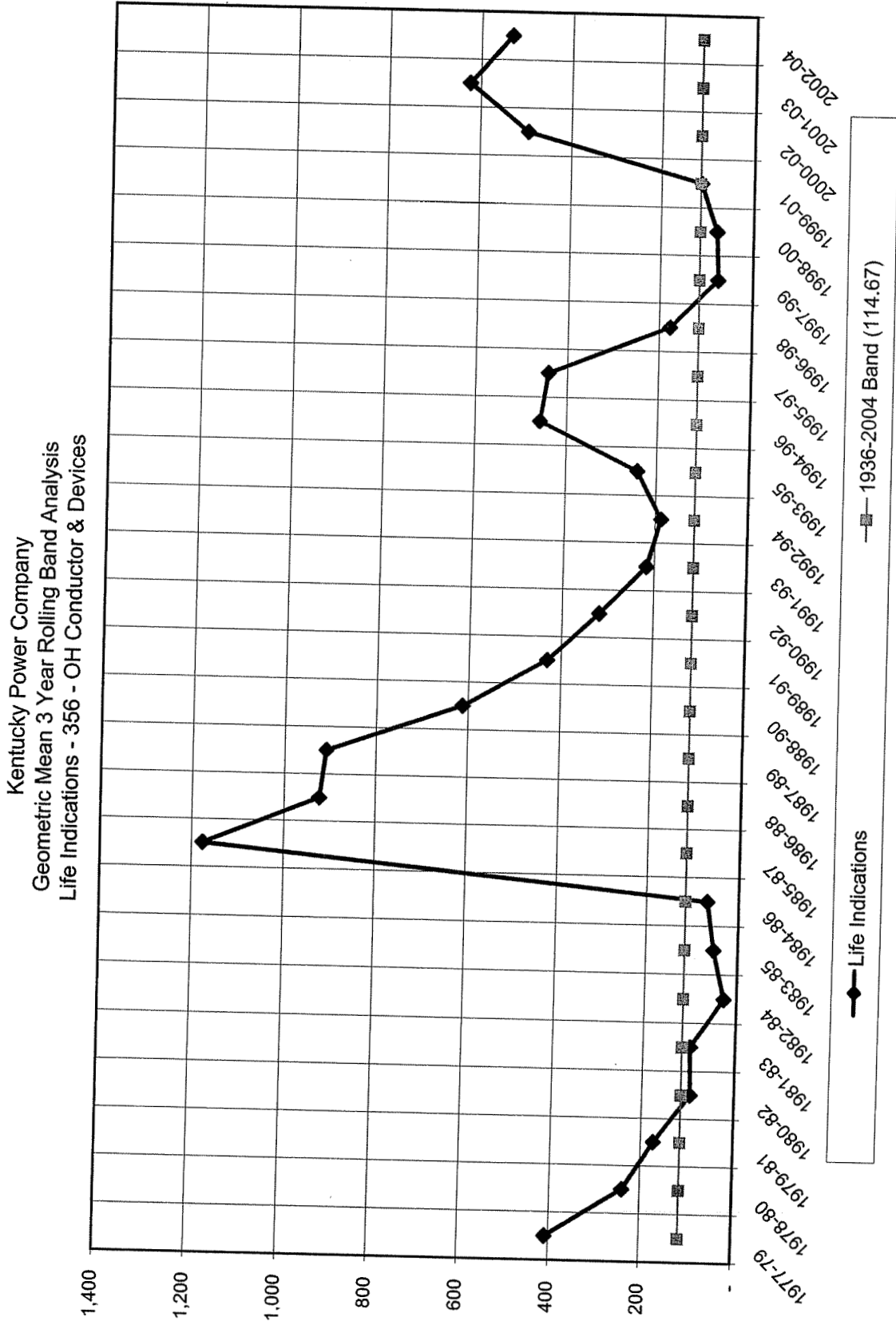
Year	Balance	Year	Balance	Year	Balance	Year	Balance
2004	80,872,451	2003	81,551,316	2002	82,303,825	2001	82,867,837
2000	83,703,889	1999	83,929,850	1998	70,831,711	1997	66,353,373
1996	66,619,161	1995	67,174,921	1994	66,657,453	1993	64,291,475
1992	63,658,006	1991	62,716,034	1990	62,877,242	1989	62,502,723
1988	62,784,830	1987	63,250,307	1986	63,958,269	1985	64,522,920
1984	65,219,795	1983	18,912,853	1982	18,978,886	1981	17,904,788

1980	17,466,435	1979	17,214,992	1978	17,220,891	1977	16,981,389
1976	16,872,391	1975	16,564,795	1974	16,396,248	1973	16,527,550
1972	16,667,857	1971	16,746,174	1970	16,542,435	1969	10,791,946
1968	7,178,110	1967	6,950,714	1966	5,760,810	1965	5,433,703
1964	4,731,938	1963	3,899,158	1962	3,850,589	1961	3,202,565
1960	3,177,216	1959	3,159,070	1958	2,988,380	1957	2,654,403
1956	2,664,261	1955	2,614,115	1954	2,628,789	1953	2,642,409
1952	2,506,444	1951	2,462,866	1950	2,459,466	1949	2,479,470
1948	2,316,513	1947	2,314,638	1946	2,325,573	1945	2,333,674
1944	2,262,147	1943	1,986,002	1942	1,994,458	1941	1,466,654
1940	1,459,936	1939	1,465,141	1938	1,481,032	1937	1,367,567
1936	1,344,898						

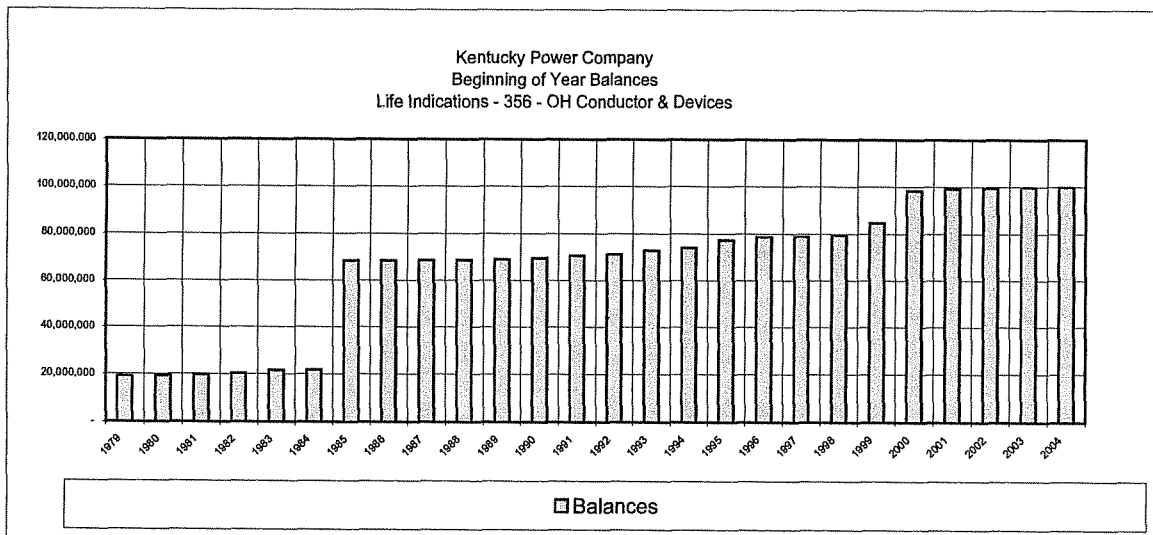
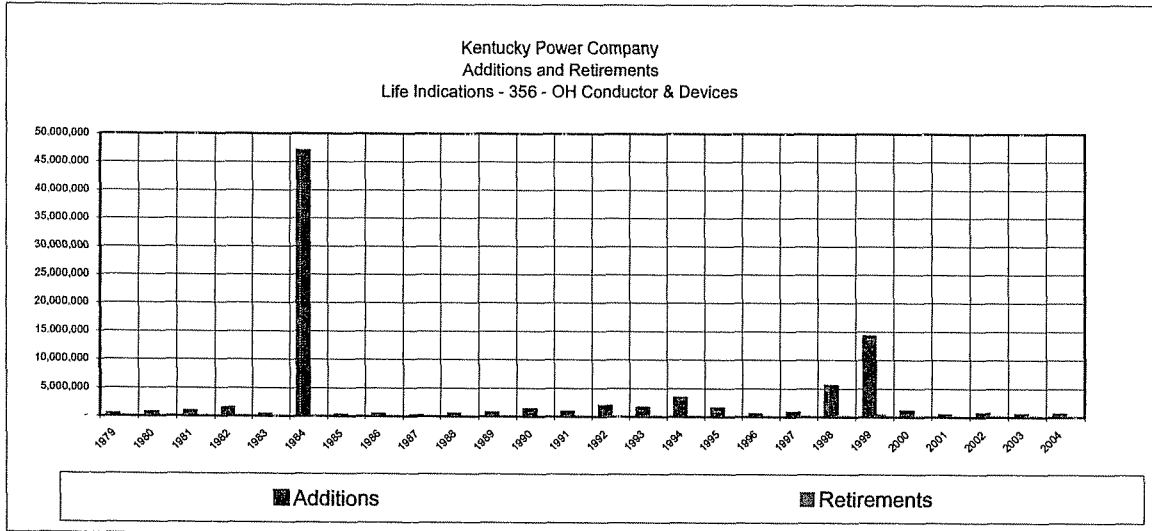
Kentucky Power Company  
Electric Plant In Service  
Geometric Mean Turnover Analysis

Account 356 - OH Conductor & Devices

Year	BOY Plant		Single Year Additions	Single Year Retirements	Addition Ratio	Retirement Ratio	Geometric Mean Life Estimate	3 Year Band				Addition Ratio	Retirement Ratio	Geometric Mean Life Estimate
	Balance	Avg. Plant						3 Year Band	Avg. Plant	Additions	Retirements			
	a	$b = \frac{a+(a+1)}{2}$	c	d	$e = c/b$	$f = d/b$	$g = 1/\sqrt{(e*f)}$	h	i	j	k	$l = j/i$	m = k/l	$n = 1/\sqrt{(l*r)}$
1936	-	676,371	1,352,741	-	2.00000	-	-							
1937	1,352,741	1,380,868	38,555	22,301	0.02833	0.01639	46.41							
1938	1,368,995	1,429,005	130,285	10,266	0.09117	0.00718	39.07	1936-38	3,466,243	1,521,581	32,567	0.43897	0.00940	15.57
1939	1,489,014	1,481,601	1,642	16,468	0.00111	0.01112	284.92	1937-39	4,271,474	170,482	49,035	0.03991	0.01148	46.72
1940	1,474,188	1,459,108	12,353	42,514	0.00847	0.02914	63.67	1938-40	4,369,713	144,280	69,248	0.03302	0.01585	43.72
1941	1,444,027	1,437,336	24,429	37,812	0.01700	0.02631	47.29	1939-41	4,378,044	38,424	96,794	0.00878	0.02211	71.79
1942	1,430,644	1,701,702	548,771	6,656	0.32248	0.00391	28.16	1940-42	4,598,145	585,553	86,982	0.12735	0.01892	20.37
1943	1,972,759	1,978,382	15,703	4,458	0.00794	0.00225	236.46	1941-43	5,117,419	588,903	48,926	0.11508	0.00956	30.15
1944	1,984,004	2,130,956	302,052	8,148	0.14174	0.00382	42.95	1942-44	5,811,039	866,526	19,262	0.14912	0.00331	44.98
1945	2,277,908	2,325,766	99,658	3,942	0.04285	0.00169	117.34	1943-45	6,435,104	417,413	16,548	0.06487	0.00257	77.43
1946	2,373,624	2,380,892	20,609	6,073	0.00866	0.00255	212.82	1944-46	6,837,614	422,319	18,163	0.12735	0.00286	78.07
1947	2,388,160	2,390,214	17,872	13,765	0.00748	0.00576	152.39	1945-47	7,096,872	138,139	23,780	0.01946	0.00335	123.82
1948	2,392,267	2,398,149	10,672	19,064	0.01285	0.00795	98.92	1946-48	7,169,254	69,308	38,902	0.00967	0.00543	138.07
1949	2,404,030	2,488,595	193,062	23,932	0.07758	0.00962	36.61	1947-49	7,276,957	241,761	56,761	0.03322	0.00780	62.12
1950	2,573,160	2,574,283	11,129	8,883	0.00432	0.00345	258.91	1948-50	7,461,027	235,018	51,679	0.03150	0.00695	67.57
1951	2,575,406	2,581,746	34,630	21,951	0.01341	0.00850	93.64	1949-51	7,644,624	238,821	54,766	0.03124	0.00716	66.84
1952	2,588,085	2,620,686	75,265	10,064	0.02872	0.00384	95.22	1950-52	7,776,714	121,024	40,898	0.01556	0.00526	110.54
1953	2,653,286	2,733,904	168,879	7,644	0.06177	0.00280	76.09	1951-53	7,936,335	278,774	39,659	0.03513	0.00500	75.48
1954	2,814,521	2,817,815	20,188	13,601	0.00716	0.00483	170.05	1952-54	8,172,404	264,332	31,309	0.03234	0.00383	89.83
1955	2,821,108	2,825,387	19,145	10,588	0.00678	0.00375	198.45	1953-55	8,377,105	208,212	31,833	0.02485	0.00380	102.90
1956	2,829,665	2,870,813	84,338	2,043	0.02938	0.00071	218.71	1954-56	8,514,014	123,671	28,232	0.01453	0.00308	149.48
1957	2,911,960	2,909,238	24,729	30,174	0.00850	0.01037	106.50	1955-57	8,605,437	128,212	46,205	0.01490	0.00497	116.16
1958	2,906,515	3,086,081	370,604	11,473	0.12009	0.00372	47.33	1956-58	8,866,131	479,671	43,690	0.05410	0.00493	61.25
1959	3,265,646	3,368,249	210,417	5,212	0.06247	0.00155	101.71	1957-59	9,363,567	605,750	46,859	0.06469	0.00500	55.58
1960	3,470,851	3,481,447	59,149	37,958	0.01699	0.01090	73.47	1958-60	9,935,776	640,170	54,643	0.06443	0.00550	53.12
1961	3,492,042	3,524,090	66,777	2,682	0.01895	0.00076	263.33	1959-61	10,373,785	336,343	45,852	0.03242	0.00442	83.53
1962	3,556,137	3,886,300	693,542	33,216	0.17846	0.00855	25.61	1960-62	10,891,836	819,468	79,856	0.07524	0.00678	44.27
1963	4,216,463	4,258,894	98,337	13,476	0.02309	0.00316	116.99	1961-63	11,669,283	858,656	43,374	0.07358	0.00423	56.67
1964	4,301,324	4,738,299	867,898	13,949	0.18739	0.00294	42.58	1962-64	12,883,492	1,679,777	60,641	0.13038	0.00471	40.37
1965	5,175,273	5,503,182	389,726	64,144	0.13921	0.00624	18.94	1963-65	14,500,374	1,752,310	130,673	0.12085	0.00500	29.52
1966	5,831,090	5,997,881	397,726	64,144	0.06631	0.01069	37.55	1964-66	16,239,361	2,051,699	188,351	0.12634	0.01160	26.12
1967	6,164,672	6,880,940	1,269,718	237,182	0.19005	0.01626	12.17	1965-67	18,182,003	2,433,519	411,584	0.13384	0.01264	18.17
1968	7,197,208	7,303,566	315,885	103,170	0.04325	0.01413	40.46	1966-68	19,982,387	1,983,329	404,496	0.09925	0.02024	22.31
1969	7,409,923	9,197,733	3,725,192	149,572	0.40501	0.01232	12.32	1967-69	23,182,239	5,310,795	489,924	0.22909	0.02113	14.37
1970	10,985,543	13,940,333	5,917,098	7,519	0.42446	0.00054	66.09	1968-70	30,441,631	9,958,175	260,261	0.32712	0.00855	18.91
1971	16,895,122	17,069,614	406,175	57,192	0.02380	0.00335	112.00	1969-71	40,207,679	10,048,465	214,283	0.24991	0.00533	27.40
1972	17,244,105	17,292,337	126,242	29,778	0.00730	0.00172	282.04	1970-72	48,302,283	6,449,515	94,489	0.13352	0.00196	61.87
1973	17,340,569	17,359,593	64,339	26,291	0.00371	0.00151	422.08	1971-73	51,721,544	596,756	113,261	0.01154	0.00219	198.94
1974	17,378,617	17,400,741	73,068	28,820	0.00420	0.00166	379.19	1972-74	52,052,671	263,649	84,889	0.00507	0.00163	347.94
1975	17,422,865	17,595,848	374,388	28,422	0.02128	0.00162	170.58	1973-75	52,356,182	511,795	83,533	0.00978	0.00160	253.22
1976	17,768,831	18,024,677	517,426	5,734	0.02871	0.00032	330.91	1974-76	53,021,266	964,882	62,976	0.01820	0.00119	215.09
1977	18,280,523	18,441,747	322,447	-	0.01748	-	-	1975-77	54,062,272	1,214,261	34,156	0.02246	0.00663	265.46
1978	18,602,970	18,821,442	456,150	19,207	0.02424	0.00102	201.08	1976-78	55,287,865	1,296,023	24,941	0.02344	0.00045	307.52
1979	19,039,913	19,146,523	213,247	28	0.01114	0.00000	7,835.55	1977-79	56,409,711	991,844	19,235	0.01758	0.00034	408.40
1980	19,253,132	19,474,020	473,120	31,345	0.02429	0.00161	159.91	1978-80	57,441,984	1,142,517	50,580	0.01989	0.00088	238.95
1981	19,694,907	20,000,224	665,110	54,476	0.03328	0.00272	105.07	1979-81	58,820,766	1,351,477	85,849	0.02305	0.00146	172.10
1982	20,305,541	20,921,330	1,310,712	79,134	0.06265	0.00378	64.96	1980-82	60,395,574	2,448,942	164,955	0.04055	0.00273	95.02
1983	21,537,119	21,595,705	177,518	60,347	0.00822	0.00279	208.65	1981-83	62,517,259	2,153,340	193,957	0.03444	0.00310	96.74
1984	21,654,290	45,028,794	46,821,196	72,189	1.03981	0.00160	24.49	1982-84	87,545,828	48,309,426	211,670	0.55182	0.00242	27.38
1985	68,403,297	68,442,907	86,711	7,491	0.00127	0.00011	2,688.48	1983-85	135,067,405	47,085,425	140,027	0.34861	0.00104	52.60
1986	68,482,517	68,554,215	217,238	73,842	0.00317	0.00108	541.27	1984-86	182,025,916	47,125,145	153,522	0.25889	0.00084	67.67
1987	68,625,913	68,661,907	71,987	-	0.00105	-	-	1985-87	205,659,029	375,936	81,333	0.00183	0.00040	1,176.14
1988	68,697,900	68,849,866	312,876	8,944	0.00454	0.00013	1,301.52	1986-88	206,065,988	602,101	82,786	0.00292	0.00040	922.98
1989	69,001,832	69,225,438	496,919	49,708	0.00718	0.00072	440.46	1987-89	206,737,210	881,782	58,652	0.00427	0.00028	909.07
1990	69,449,043	70,028,498	1,158,910	-	0.01655	-	-	1988-90	208,103,802	1,968,705	58,652	0.00946	0.00028	612.42
1991	70,607,953	70,895,074	629,085	54,844	0.00887	0.00077	381.68	1989-91	210,149,009	2,284,914	104,552	0.01087	0.00050	429.96
1992	71,182,194	72,016,620	1,741,306	72,454	0.02418	0.00101	202.75	1990-92	212,940,192	3,529,301	127,298	0.01657	0.00060	317.69
1993	72,851,046	73,507,020	1,446,339	134,392	0.01968	0.00183	166.73	1991-93	216,418,713	3,816,730	261,690	0.01764	0.00121	216.55
1994	74,162,993	75,756,952	3,200,587	12,669	0.04225	0.00017	376.22	1992-94	221,280,592	6,388,232	219,515	0.02887	0.00099	186.86
1995	77,350,911	78,037,466	1,373,109	-	0.01760	-	-	1993-95	227,301,437	6,020,035	147,061	0.02648	0.00065	241.58
1996	78,724,020	78,855,831	303,786	40,165	0.00385	0.00051	713.88	1994-96	232,650,248	4,877,462	52,834	0.02096	0.00023	458.30
1997	78,987,641	79,241,129	592,875	85,900	0.00748	0.00108	351.13	1995-97	236,134,425	2,269,770	126,065	0.00961	0.00053	441.44
1998	79,494,616	82,092,200	5,365,251	170,083	0.06536	0.00207	85.94	1996-98	240,189,159	6,261,912	296,148	0.02607	0.00123	176.38
1999	84,689,784	91,577,826	14,091,197	315,114	0.15387	0.00344	43.46	1997-99	252,911,154	20,049,323	571,097	0.07927	0.00226	74.74
2000	98,465,867	98,833,023	846,460	112,148	0.00856	0.00113	320.78	1998-00</						



**Kentucky Power Company  
Electric Plant In Service  
Additions, Retirements and Balances**  
**Account 356 - OH Conductor & Devices**



**Kentucky Power Company**

**356 - OH Conductor & Devices**

**Calculation of Remaining Life  
Based Upon Broad Group/Vintage Group Procedures  
Related to Original Cost as of December 31, 2004**

Survivor Curve .. IOWA:			50	S6		
Year (1)	Age (2)	Surviving Investment (3)	BG/VG Average		ASL Weights (6)=(3)/(4)	RL Weights (7)=(6)*(5)
			Service Life (4)	Remaining Life (5)		
2004	0.5	380,719	50.00	49.50	7,614	376,910
2003	1.5	311,597	50.00	48.50	6,232	302,247
2002	2.5	503,961	50.00	47.50	10,079	478,760
2001	3.5	235,255	50.00	46.50	4,705	218,785
2000	4.5	847,629	50.00	45.50	16,953	771,338
1999	5.5	14,110,661	50.00	44.50	282,213	12,558,406
1998	6.5	5,372,662	50.00	43.50	107,453	4,674,185
1997	7.5	593,694	50.00	42.50	11,874	504,636
1996	8.5	304,206	50.00	41.50	6,084	252,489
1995	9.5	1,375,006	50.00	40.50	27,500	1,113,747
1994	10.5	3,205,008	50.00	39.50	64,100	2,531,938
1993	11.5	1,448,337	50.00	38.50	28,967	1,115,211
1992	12.5	1,743,711	50.00	37.50	34,874	1,307,773
1991	13.5	629,954	50.00	36.50	12,599	459,863
1990	14.5	1,160,511	50.00	35.50	23,210	823,956
1989	15.5	497,605	50.00	34.50	9,952	343,345
1988	16.5	313,308	50.00	33.50	6,266	209,915
1987	17.5	72,086	50.00	32.50	1,442	46,856
1986	18.5	217,538	50.00	31.50	4,351	137,048
1985	19.5	86,831	50.00	30.50	1,737	52,966
1984	20.5	46,885,871	50.00	29.50	937,717	27,662,389
1983	21.5	177,763	50.00	28.50	3,555	101,324
1982	22.5	1,312,522	50.00	27.50	26,250	721,880
1981	23.5	666,029	50.00	26.50	13,321	352,991
1980	24.5	473,774	50.00	25.50	9,475	241,622
1979	25.5	213,542	50.00	24.50	4,271	104,634
1978	26.5	456,780	50.00	23.50	9,136	214,684
1977	27.5	322,892	50.00	22.50	6,458	145,300
1976	28.5	518,141	50.00	21.50	10,363	222,797
1975	29.5	374,905	50.00	20.50	7,498	153,709
1974	30.5	73,169	50.00	19.50	1,463	28,535
1973	31.5	64,428	50.00	18.50	1,289	23,838
1972	32.5	126,416	50.00	17.50	2,528	44,245
1971	33.5	406,735	50.00	16.50	8,135	134,221
1970	34.5	5,925,224	50.00	15.50	118,504	1,836,800

1969	35.5	3,730,218	50.00	14.50	74,604	1,081,778
1968	36.5	316,287	50.00	13.50	6,326	85,406
1967	37.5	1,271,045	50.00	12.50	25,421	317,869
1966	38.5	397,905	50.00	11.51	7,958	91,609
1965	39.5	765,334	50.00	10.53	15,307	161,133
1964	40.5	884,295	50.00	9.56	17,686	169,044
1963	41.5	97,330	50.00	8.61	1,947	16,769
1962	42.5	678,556	50.00	7.71	13,571	104,619
1961	43.5	64,043	50.00	6.85	1,281	8,779
1960	44.5	54,924	50.00	6.06	1,098	6,660
1959	45.5	185,996	50.00	5.34	3,720	19,879
1958	46.5	305,056	50.00	4.70	6,101	28,685
1957	47.5	18,446	50.00	4.14	369	1,526
1956	48.5	55,190	50.00	3.65	1,104	4,024
1955	49.5	10,589	50.00	3.22	212	682
1954	50.5	9,050	50.00	2.86	181	517
1953	51.5	58,595	50.00	2.55	1,172	2,984
1952	52.5	19,226	50.00	2.28	385	876
1951	53.5	6,172	50.00	2.05	123	253
1950	54.5	1,307	50.00	1.85	26	48
1949	55.5	14,053	50.00	1.68	281	473
1948	56.5	1,304	50.00	1.53	26	40
1947	57.5	411	50.00	1.40	8	12
1946	58.5	239	50.00	1.29	5	6
1945	59.5	540	50.00	1.19	11	13
1944	60.5	705	50.00	1.09	14	15
1943	61.5	14	50.00	1.00	0	0
1942	62.5	179	50.00	0.92	4	3
1941	63.5	3	50.00	0.82	0	0
1940	64.5	0	50.00	0.72	0	0
1939	65.5	0	50.00	0.70	0	0
1938	66.5	0	50.00	0.50	0	0
1937	67.5	0	50.00	0.50	0	0
1936	68.5	0	50.00	0.50	0	0

100,355,481

2,007,110

62,373,042

AVERAGE SERVICE LIFE  
AVERAGE REMAINING LIFE

50.00  
31.08



## Kentucky Power Company

# 357 - Underground Conduit

### Company Notes

There have been no retirements from this account. The sole investment is a 1982 vintage survivor which has attained age 22.5. The recommendation is to continue the current average service life of 37 years following an R2.0 type dispersion.

Due to the minimal investment in this account, there is no removal or salvage expected.

### Sk Notes

Not enough data to review this account

**Kentucky Power Company**  
**358 - Underground Conductor**

**Company Notes**

As in account 357, there have been no retirements from this account. The investment is of 1982 vintage. There is no basis to recommend changes to the average service life or dispersion for this account.

Due to the minimal investment in this account, there is no removal or salvage expected.

**Sk Notes**

Not enough data to review this account

**Kentucky Power Company**  
**Distribution**

## Kentucky Power Company

### 360.2 - Land Rights

#### Company Notes

No actuarial analysis was performed for the investment in this account due to the minimal retirement history. The average age of the surviving investment is 32 years. The recommendation is to continue the current average service life and dispersion.

Any retirements from the land rights account would not be expected to produce any salvage and no removal costs should be expected to be incurred. Therefore, the recommendation is 0% for both gross removal and salvage resulting in a recommended 0% net salvage.

#### Sk Notes

Account analyzed with SPR model - Lack of retirements in analysis

**SPR Results**  
**Kentucky Power Company**  
**Account: 360.2 - Land Rights**

Curve	Life	Sum of Squared Differences	Index of Variation
<b>BAND: 1960 - 2004</b>			
R3	142	1.05E+10	7
S1.5	148	1.49E+10	8
L2	148	1.74E+10	9
L3	118	1.93E+10	9
R4	99	1.94E+10	9
S2	126	1.94E+10	9
R2.5	148	2.25E+10	10
S3	100	2.49E+10	11
L4	94	2.66E+10	11
S1	148	2.83E+10	11
R5	78	3.04E+10	12
S4	83	3.04E+10	12
L5	79	3.17E+10	12
S5	73	3.39E+10	12
S6	68	3.59E+10	13
SQ	65	4.01E+10	14
L1.5	148	7.43E+10	18
R2	148	8.11E+10	19
S0.5	148	1.12E+11	23
L1	148	2.13E+11	31
R1.5	148	2.60E+11	35
S0	148	2.86E+11	36
R1	148	5.51E+11	50
L0.5	148	5.79E+11	52
S-0.5	148	8.59E+11	63
R0.5	148	1.07E+12	70
L0	148	1.15E+12	73
O1	148	1.77E+12	90
O2	148	2.31E+12	103
O3	148	5.10E+12	153
O4	148	9.58E+12	210

Minimum Equipment Life Expectancy: 7  
 Maximum Equipment Life Expectancy: 148  
 Life Expectancy Increment: 1  
 Begin Year: 1960  
 End Year: 2004  
 Year Fit Increment: 0

**Plant Balances**

Year	Balance	Year	Balance	Year	Balance	Year	Balance
2004	3,658,509	2003	3,658,509	2002	3,469,528	2001	3,338,221
2000	3,324,969	1999	3,009,953	1998	3,000,685	1997	2,892,042
1996	2,672,502	1995	2,619,155	1994	2,512,754	1993	2,498,731
1992	2,449,603	1991	2,354,839	1990	2,278,685	1989	2,223,847
1988	2,192,669	1987	2,166,289	1986	2,147,273	1985	2,100,061
1984	2,084,391	1983	2,051,773	1982	1,989,808	1981	1,961,191
1980	1,913,243	1979	1,884,062	1978	1,870,556	1977	1,844,530
1976	1,821,737	1975	1,780,212	1974	1,765,105	1973	1,751,669
1972	1,727,373	1971	1,727,373	1970	1,713,690	1969	1,715,269
1968	1,708,154	1967	1,684,681	1966	1,641,233	1965	1,632,295
1964	1,623,585	1963	1,620,459	1962	1,613,334	1961	1,606,796
1960	1,589,006						

**Simulated Balances**

Curve: R3                      ASL: 142                      SSD: 1.05E+10                      IV: 7

Year	Balance	Year	Balance	Year	Balance	Year	Balance
2004	3,637,523	2003	3,640,112	2002	3,453,617	2001	3,324,689
2000	3,313,723	1999	3,000,892	1998	2,993,712	1997	2,887,073
1996	2,669,448	1995	2,617,929	1994	2,513,279	1993	2,500,935
1992	2,453,419	1991	2,360,197	1990	2,285,517	1989	2,232,089
1988	2,202,261	1987	2,177,175	1986	2,159,399	1985	2,113,374
1984	2,098,839	1983	2,067,308	1982	2,006,379	1981	1,978,751
1980	1,931,746	1979	1,903,465	1978	1,890,818	1977	1,865,584
1976	1,843,573	1975	1,802,793	1974	1,788,394	1973	1,775,478
1972	1,751,825	1971	1,752,438	1970	1,738,974	1969	1,739,144
1968	1,732,558	1967	1,695,623	1966	1,652,027	1965	1,643,213
1964	1,633,986	1963	1,627,439	1962	1,618,372	1961	1,609,496
1960	1,586,278						

Curve: S1.5                      ASL: 148                      SSD: 1.49E+10                      IV: 8

Year	Balance	Year	Balance	Year	Balance	Year	Balance
2004	3,628,241	2003	3,631,636	2002	3,445,915	2001	3,317,737
2000	3,307,487	1999	2,995,351	1998	2,988,843	1997	2,882,843
1996	2,665,835	1995	2,614,911	1994	2,510,826	1993	2,499,017
1992	2,452,002	1991	2,359,254	1990	2,285,022	1989	2,232,015
1988	2,202,577	1987	2,177,852	1986	2,160,408	1985	2,114,685
1984	2,100,427	1983	2,069,144	1982	2,008,440	1981	1,981,014
1980	1,934,188	1979	1,906,062	1978	1,893,547	1977	1,868,423
1976	1,846,500	1975	1,805,788	1974	1,791,438	1973	1,778,551
1972	1,754,908	1971	1,755,513	1970	1,742,024	1969	1,742,150

1968	1,735,506	1967	1,698,499	1966	1,654,819	1965	1,645,910
1964	1,636,577	1963	1,629,913	1962	1,620,717	1961	1,611,705
1960	1,588,343						

**Curve: L2 ASL: 148 SSD: 1.74E+10 IV: 9**

Year	Balance	Year	Balance	Year	Balance	Year	Balance
2004	3,615,272	2003	3,619,170	2002	3,433,920	2001	3,306,185
2000	3,296,356	1999	2,984,622	1998	2,978,501	1997	2,872,878
1996	2,656,240	1995	2,605,680	1994	2,501,958	1993	2,490,509
1992	2,443,854	1991	2,351,464	1990	2,277,589	1989	2,224,936
1988	2,195,852	1987	2,171,477	1986	2,154,379	1985	2,108,998
1984	2,095,076	1983	2,064,124	1982	2,003,744	1981	1,976,634
1980	1,930,116	1979	1,902,289	1978	1,890,064	1977	1,865,218
1976	1,843,563	1975	1,803,107	1974	1,789,003	1973	1,776,348
1972	1,752,925	1971	1,753,738	1970	1,740,443	1969	1,740,750
1968	1,734,275	1967	1,697,423	1966	1,653,887	1965	1,645,108
1964	1,635,893	1963	1,629,335	1962	1,620,235	1961	1,611,306
1960	1,588,017						

**Curve: L3 ASL: 118 SSD: 1.93E+10 IV: 9**

Year	Balance	Year	Balance	Year	Balance	Year	Balance
2004	3,633,906	2003	3,637,870	2002	3,452,626	2001	3,324,843
2000	3,314,916	1999	3,003,038	1998	2,996,732	1997	2,890,883
1996	2,673,977	1995	2,623,109	1994	2,519,044	1993	2,507,220
1992	2,460,161	1991	2,367,343	1990	2,293,015	1989	2,239,886
1988	2,210,306	1987	2,185,419	1986	2,167,796	1985	2,121,880
1984	2,107,412	1983	2,075,906	1982	2,014,966	1981	1,987,291
1980	1,940,207	1979	1,911,815	1978	1,899,027	1977	1,873,623
1976	1,851,415	1975	1,810,413	1974	1,795,772	1973	1,782,594
1972	1,758,661	1971	1,758,979	1970	1,745,207	1969	1,745,055
1968	1,738,140	1967	1,700,870	1966	1,656,938	1965	1,647,789
1964	1,638,228	1963	1,631,350	1962	1,621,955	1961	1,612,758
1960	1,589,229						

**Curve: R4 ASL: 99 SSD: 1.94E+10 IV: 9**

Year	Balance	Year	Balance	Year	Balance	Year	Balance
2004	3,633,440	2003	3,637,951	2002	3,453,184	2001	3,325,808
2000	3,316,220	1999	3,004,615	1998	2,998,519	1997	2,892,822
1996	2,676,016	1995	2,625,202	1994	2,521,146	1993	2,509,293
1992	2,462,170	1991	2,369,255	1990	2,294,806	1989	2,241,538
1988	2,211,803	1987	2,186,749	1986	2,168,950	1985	2,122,853
1984	2,108,203	1983	2,076,518	1982	2,015,404	1981	1,987,563
1980	1,940,322	1979	1,911,784	1978	1,898,861	1977	1,873,337
1976	1,851,024	1975	1,809,932	1974	1,795,217	1973	1,781,979
1972	1,758,001	1971	1,758,288	1970	1,744,498	1969	1,744,342
1968	1,737,434	1967	1,700,182	1966	1,656,276	1965	1,647,160

1964	1,637,638	1963	1,630,803	1962	1,621,456	1961	1,612,308
1960	1,588,828						

**Curve: S2 ASL: 126 SSD: 1.94E+10 IV: 9**

Year	Balance	Year	Balance	Year	Balance	Year	Balance
2004	3,633,065	2003	3,637,072	2002	3,451,895	2001	3,324,197
2000	3,314,366	1999	3,002,594	1998	2,996,393	1997	2,890,643
1996	2,673,829	1995	2,623,051	1994	2,519,067	1993	2,507,313
1992	2,460,308	1991	2,367,529	1990	2,293,231	1989	2,240,124
1988	2,210,555	1987	2,185,666	1986	2,168,031	1985	2,122,097
1984	2,107,606	1983	2,076,071	1982	2,015,097	1981	1,987,387
1980	1,940,267	1979	1,911,840	1978	1,899,015	1977	1,873,576
1976	1,851,335	1975	1,810,307	1974	1,795,644	1973	1,782,445
1972	1,758,496	1971	1,758,802	1970	1,745,023	1969	1,744,870
1968	1,737,957	1967	1,700,693	1966	1,656,770	1965	1,647,632
1964	1,638,085	1963	1,631,222	1962	1,621,843	1961	1,612,663
1960	1,589,150						

**Curve: R2.5 ASL: 148 SSD: 2.25E+10 IV: 10**

Year	Balance	Year	Balance	Year	Balance	Year	Balance
2004	3,602,190	2003	3,605,796	2002	3,420,301	2001	3,292,338
2000	3,282,320	1999	2,970,402	1998	2,964,097	1997	2,858,322
1996	2,641,522	1995	2,590,798	1994	2,486,926	1993	2,475,348
1992	2,428,593	1991	2,336,117	1990	2,262,164	1989	2,209,447
1988	2,180,322	1987	2,155,933	1986	2,138,850	1985	2,093,510
1984	2,079,653	1983	2,048,794	1982	1,988,525	1981	1,961,545
1980	1,915,179	1979	1,887,524	1978	1,875,498	1977	1,850,879
1976	1,829,474	1975	1,789,290	1974	1,775,479	1973	1,763,144
1972	1,740,066	1971	1,741,247	1970	1,728,347	1969	1,729,075
1968	1,723,044	1967	1,686,654	1966	1,643,588	1965	1,635,293
1964	1,626,580	1963	1,620,540	1962	1,611,973	1961	1,603,591
1960	1,580,858						

**Curve: S3 ASL: 100 SSD: 2.49E+10 IV: 11**

Year	Balance	Year	Balance	Year	Balance	Year	Balance
2004	3,631,968	2003	3,637,657	2002	3,453,945	2001	3,327,508
2000	3,318,745	1999	3,007,857	1998	3,002,375	1997	2,897,196
1996	2,680,815	1995	2,630,342	1994	2,526,547	1993	2,514,880
1992	2,467,876	1991	2,375,020	1990	2,300,574	1989	2,247,259
1988	2,217,436	1987	2,192,255	1986	2,174,297	1985	2,128,015
1984	2,113,157	1983	2,081,247	1982	2,019,896	1981	1,991,808
1980	1,944,314	1979	1,915,521	1978	1,902,344	1977	1,876,568
1976	1,854,008	1975	1,812,677	1974	1,797,731	1973	1,784,272
1972	1,760,084	1971	1,760,172	1970	1,746,195	1969	1,745,864
1968	1,738,794	1967	1,701,391	1966	1,657,347	1965	1,648,105
1964	1,638,467	1963	1,631,528	1962	1,622,085	1961	1,612,853



1960 1,589,296

<b>Curve: L4 ASL: 94 SSD: 2.66E+10 IV: 11</b>							
<b>Year</b>	<b>Balance</b>	<b>Year</b>	<b>Balance</b>	<b>Year</b>	<b>Balance</b>	<b>Year</b>	<b>Balance</b>
2004	3,631,637	2003	3,637,583	2002	3,454,119	2001	3,327,918
2000	3,319,381	1999	3,008,705	1998	3,003,422	1997	2,898,425
1996	2,682,207	1995	2,631,877	1994	2,528,202	1993	2,516,631
1992	2,469,699	1991	2,376,889	1990	2,302,466	1989	2,249,150
1988	2,219,303	1987	2,194,077	1986	2,176,055	1985	2,129,691
1984	2,114,738	1983	2,082,722	1982	2,021,257	1981	1,993,051
1980	1,945,436	1979	1,916,522	1978	1,903,227	1977	1,877,338
1976	1,854,670	1975	1,813,240	1974	1,798,203	1973	1,784,662
1972	1,760,403	1971	1,760,429	1970	1,746,400	1969	1,746,026
1968	1,738,919	1967	1,701,488	1966	1,657,420	1965	1,648,160
1964	1,638,508	1963	1,631,558	1962	1,622,107	1961	1,612,868
1960	1,589,307						

<b>Curve: S1 ASL: 148 SSD: 2.83E+10 IV: 11</b>							
<b>Year</b>	<b>Balance</b>	<b>Year</b>	<b>Balance</b>	<b>Year</b>	<b>Balance</b>	<b>Year</b>	<b>Balance</b>
2004	3,595,790	2003	3,600,391	2002	3,415,859	2001	3,288,849
2000	3,279,747	1999	2,968,742	1998	2,963,344	1997	2,858,436
1996	2,642,501	1995	2,592,628	1994	2,489,576	1993	2,478,778
1992	2,432,754	1991	2,340,974	1990	2,267,689	1989	2,215,606
1988	2,187,069	1987	2,163,222	1986	2,146,630	1985	2,101,735
1984	2,088,279	1983	2,057,774	1982	1,997,821	1981	1,971,120
1980	1,924,993	1979	1,897,538	1978	1,885,669	1977	1,861,162
1976	1,839,828	1975	1,799,678	1974	1,785,864	1973	1,773,483
1972	1,750,320	1971	1,751,376	1970	1,738,311	1969	1,738,834
1968	1,732,560	1967	1,695,897	1966	1,652,535	1965	1,643,919
1964	1,634,853	1963	1,628,432	1962	1,619,457	1961	1,610,642
1960	1,587,456						

<b>Curve: R5 ASL: 78 SSD: 3.04E+10 IV: 12</b>							
<b>Year</b>	<b>Balance</b>	<b>Year</b>	<b>Balance</b>	<b>Year</b>	<b>Balance</b>	<b>Year</b>	<b>Balance</b>
2004	3,631,842	2003	3,640,438	2002	3,459,025	2001	3,334,350
2000	3,326,886	1999	3,016,907	1998	3,011,999	1997	2,907,107
1996	2,690,777	1995	2,640,164	1994	2,536,074	1993	2,523,990
1992	2,476,478	1991	2,383,051	1990	2,307,992	1989	2,254,042
1988	2,223,580	1987	2,197,770	1986	2,179,202	1985	2,132,340
1984	2,116,939	1983	2,084,526	1982	2,022,714	1981	1,994,211
1980	1,946,346	1979	1,917,225	1978	1,903,761	1977	1,877,737
1976	1,854,964	1975	1,813,453	1974	1,798,355	1973	1,784,769
1972	1,760,477	1971	1,760,479	1970	1,746,434	1969	1,746,047
1968	1,738,933	1967	1,701,496	1966	1,657,425	1965	1,648,162
1964	1,638,509	1963	1,631,558	1962	1,622,107	1961	1,612,868
1960	1,589,307						

<b>Curve: S4</b>		<b>ASL: 83</b>		<b>SSD: 3.04E+10</b>		<b>IV: 12</b>	
<b>Year</b>	<b>Balance</b>	<b>Year</b>	<b>Balance</b>	<b>Year</b>	<b>Balance</b>	<b>Year</b>	<b>Balance</b>
2004	3,634,498	2003	3,642,829	2002	3,461,185	2001	3,336,305
2000	3,328,661	1999	3,018,509	1998	3,013,426	1997	2,908,361
1996	2,691,863	1995	2,641,091	1994	2,536,854	1993	2,524,632
1992	2,476,992	1991	2,383,451	1990	2,308,296	1989	2,254,268
1988	2,223,739	1987	2,197,874	1986	2,179,266	1985	2,132,373
1984	2,116,952	1983	2,084,524	1982	2,022,703	1981	1,994,195
1980	1,946,329	1979	1,917,208	1978	1,903,746	1977	1,877,723
1976	1,854,953	1975	1,813,444	1974	1,798,348	1973	1,784,763
1972	1,760,473	1971	1,760,476	1970	1,746,431	1969	1,746,046
1968	1,738,932	1967	1,701,495	1966	1,657,425	1965	1,648,162
1964	1,638,509	1963	1,631,558	1962	1,622,107	1961	1,612,868
1960	1,589,307						

<b>Curve: L5</b>		<b>ASL: 79</b>		<b>SSD: 3.17E+10</b>		<b>IV: 12</b>	
<b>Year</b>	<b>Balance</b>	<b>Year</b>	<b>Balance</b>	<b>Year</b>	<b>Balance</b>	<b>Year</b>	<b>Balance</b>
2004	3,629,310	2003	3,638,844	2002	3,458,274	2001	3,334,337
2000	3,327,492	1999	3,018,009	1998	3,013,488	1997	2,908,873
1996	2,692,712	1995	2,642,174	1994	2,538,082	1993	2,525,930
1992	2,478,294	1991	2,384,706	1990	2,309,465	1989	2,255,323
1988	2,224,667	1987	2,198,673	1986	2,179,938	1985	2,132,928
1984	2,117,400	1983	2,084,881	1982	2,022,984	1981	1,994,413
1980	1,946,495	1979	1,917,332	1978	1,903,837	1977	1,877,790
1976	1,855,000	1975	1,813,476	1974	1,798,370	1973	1,784,778
1972	1,760,482	1971	1,760,482	1970	1,746,435	1969	1,746,048
1968	1,738,933	1967	1,701,496	1966	1,657,425	1965	1,648,162
1964	1,638,509	1963	1,631,558	1962	1,622,107	1961	1,612,868
1960	1,589,307						

<b>Curve: S5</b>		<b>ASL: 73</b>		<b>SSD: 3.39E+10</b>		<b>IV: 12</b>	
<b>Year</b>	<b>Balance</b>	<b>Year</b>	<b>Balance</b>	<b>Year</b>	<b>Balance</b>	<b>Year</b>	<b>Balance</b>
2004	3,629,765	2003	3,642,614	2002	3,464,208	2001	3,341,522
2000	3,335,204	1999	3,025,711	1998	3,020,795	1997	2,915,527
1996	2,698,587	1995	2,647,213	1994	2,542,290	1993	2,529,364
1992	2,481,035	1991	2,386,849	1990	2,311,106	1989	2,256,556
1988	2,225,577	1987	2,199,333	1986	2,180,408	1985	2,133,255
1984	2,117,624	1983	2,085,030	1982	2,023,080	1981	1,994,472
1980	1,946,529	1979	1,917,351	1978	1,903,847	1977	1,877,794
1976	1,855,002	1975	1,813,477	1974	1,798,370	1973	1,784,778
1972	1,760,482	1971	1,760,482	1970	1,746,435	1969	1,746,048
1968	1,738,933	1967	1,701,496	1966	1,657,425	1965	1,648,162
1964	1,638,509	1963	1,631,558	1962	1,622,107	1961	1,612,868
1960	1,589,307						

Curve: S6		ASL: 68		SSD: 3.59E+10		IV: 13	
Year	Balance	Year	Balance	Year	Balance	Year	Balance
2004	3,631,501	2003	3,647,715	2002	3,471,127	2001	3,349,166
2000	3,342,815	1999	3,032,819	1998	3,027,107	1997	2,920,933
1996	2,703,055	1995	2,650,796	1994	2,545,084	1993	2,531,483
1992	2,482,604	1991	2,387,980	1990	2,311,903	1989	2,257,104
1988	2,225,946	1987	2,199,575	1986	2,180,563	1985	2,133,353
1984	2,117,684	1983	2,085,066	1982	2,023,101	1981	1,994,484
1980	1,946,536	1979	1,917,355	1978	1,903,849	1977	1,877,795
1976	1,855,002	1975	1,813,477	1974	1,798,370	1973	1,784,778
1972	1,760,482	1971	1,760,482	1970	1,746,435	1969	1,746,048
1968	1,738,933	1967	1,701,496	1966	1,657,425	1965	1,648,162
1964	1,638,509	1963	1,631,558	1962	1,622,107	1961	1,612,868
1960	1,589,307						

Curve: SQ		ASL: 65		SSD: 4.01E+10		IV: 14	
Year	Balance	Year	Balance	Year	Balance	Year	Balance
2004	3,628,525	2003	3,660,862	2002	3,495,419	2001	3,371,514
2000	3,358,262	1999	3,043,246	1998	3,033,978	1997	2,925,335
1996	2,705,795	1995	2,652,448	1994	2,546,047	1993	2,532,024
1992	2,482,896	1991	2,388,132	1990	2,311,978	1989	2,257,140
1988	2,225,962	1987	2,199,582	1986	2,180,566	1985	2,133,354
1984	2,117,684	1983	2,085,066	1982	2,023,101	1981	1,994,484
1980	1,946,536	1979	1,917,355	1978	1,903,849	1977	1,877,795
1976	1,855,002	1975	1,813,477	1974	1,798,370	1973	1,784,778
1972	1,760,482	1971	1,760,482	1970	1,746,435	1969	1,746,048
1968	1,738,933	1967	1,701,496	1966	1,657,425	1965	1,648,162
1964	1,638,509	1963	1,631,558	1962	1,622,107	1961	1,612,868
1960	1,589,307						

Curve: L1.5		ASL: 148		SSD: 7.43E+10		IV: 18	
Year	Balance	Year	Balance	Year	Balance	Year	Balance
2004	3,557,938	2003	3,563,851	2002	3,380,584	2001	3,254,782
2000	3,246,847	1999	2,936,957	1998	2,932,623	1997	2,828,750
1996	2,613,804	1995	2,564,882	1994	2,462,754	1993	2,452,860
1992	2,407,723	1991	2,316,808	1990	2,244,363	1989	2,193,099
1988	2,165,365	1987	2,142,307	1986	2,126,492	1985	2,082,359
1984	2,069,651	1983	2,039,881	1982	1,980,645	1981	1,954,644
1980	1,909,201	1979	1,882,415	1978	1,871,201	1977	1,847,339
1976	1,826,636	1975	1,787,104	1974	1,773,893	1973	1,762,105
1972	1,739,523	1971	1,741,150	1970	1,728,647	1969	1,729,722
1968	1,723,991	1967	1,687,858	1966	1,645,010	1965	1,636,895
1964	1,628,321	1963	1,622,382	1962	1,613,879	1961	1,605,525
1960	1,582,788						

<b>Curve: R2</b>		<b>ASL: 148</b>		<b>SSD: 8.11E+10</b>		<b>IV: 19</b>	
<b>Year</b>	<b>Balance</b>	<b>Year</b>	<b>Balance</b>	<b>Year</b>	<b>Balance</b>	<b>Year</b>	<b>Balance</b>
2004	3,561,773	2003	3,566,666	2002	3,382,429	2001	3,255,675
2000	3,246,842	1999	2,936,062	1998	2,930,845	1997	2,826,140
1996	2,610,361	1995	2,560,616	1994	2,457,699	1993	2,447,057
1992	2,401,224	1991	2,309,647	1990	2,236,565	1989	2,184,700
1988	2,156,409	1987	2,132,843	1986	2,116,572	1985	2,072,030
1984	2,058,959	1983	2,028,874	1982	1,969,361	1981	1,943,120
1980	1,897,477	1979	1,870,531	1978	1,859,203	1977	1,835,271
1976	1,814,541	1975	1,775,019	1974	1,761,856	1973	1,750,159
1972	1,727,708	1971	1,729,508	1970	1,717,219	1969	1,718,549
1968	1,713,114	1967	1,677,308	1966	1,634,809	1965	1,627,067
1964	1,618,898	1963	1,613,395	1962	1,605,355	1961	1,597,492
1960	1,575,267						

<b>Curve: S0.5</b>		<b>ASL: 148</b>		<b>SSD: 1.12E+11</b>		<b>IV: 23</b>	
<b>Year</b>	<b>Balance</b>	<b>Year</b>	<b>Balance</b>	<b>Year</b>	<b>Balance</b>	<b>Year</b>	<b>Balance</b>
2004	3,541,532	2003	3,547,562	2002	3,364,428	2001	3,238,787
2000	3,231,011	1999	2,921,310	1998	2,917,185	1997	2,813,527
1996	2,598,822	1995	2,550,161	1994	2,448,312	1993	2,438,708
1992	2,393,867	1991	2,303,261	1990	2,231,141	1989	2,180,216
1988	2,152,833	1987	2,130,137	1986	2,114,689	1985	2,070,933
1984	2,058,609	1983	2,029,228	1982	1,970,390	1981	1,944,795
1980	1,899,767	1979	1,873,403	1978	1,862,617	1977	1,839,185
1976	1,818,916	1975	1,779,821	1974	1,767,051	1973	1,755,703
1972	1,733,561	1971	1,735,625	1970	1,723,553	1969	1,725,052
1968	1,719,735	1967	1,684,006	1966	1,641,556	1965	1,633,831
1964	1,625,631	1963	1,620,051	1962	1,611,889	1961	1,603,856
1960	1,581,419						

<b>Curve: L1</b>		<b>ASL: 148</b>		<b>SSD: 2.13E+11</b>		<b>IV: 31</b>	
<b>Year</b>	<b>Balance</b>	<b>Year</b>	<b>Balance</b>	<b>Year</b>	<b>Balance</b>	<b>Year</b>	<b>Balance</b>
2004	3,500,606	2003	3,508,535	2002	3,327,250	2001	3,203,380
2000	3,197,340	1999	2,889,293	1998	2,886,746	1997	2,784,622
1996	2,571,369	1995	2,524,084	1994	2,423,551	1993	2,415,212
1992	2,371,594	1991	2,282,154	1990	2,211,138	1989	2,161,262
1988	2,134,879	1987	2,113,138	1986	2,098,606	1985	2,055,722
1984	2,044,228	1983	2,015,639	1982	1,957,547	1981	1,932,654
1980	1,888,286	1979	1,862,541	1978	1,852,340	1977	1,829,460
1976	1,809,711	1975	1,771,101	1974	1,758,784	1973	1,747,862
1972	1,726,121	1971	1,728,564	1970	1,716,852	1969	1,718,694
1968	1,713,707	1967	1,678,292	1966	1,636,134	1965	1,628,683
1964	1,620,749	1963	1,615,429	1962	1,607,523	1961	1,599,745
1960	1,577,560						

<b>Curve: R1.5</b>		<b>ASL: 148</b>		<b>SSD: 2.60E+11</b>		<b>IV: 35</b>	
--------------------	--	-----------------	--	----------------------	--	---------------	--

Year	Balance	Year	Balance	Year	Balance	Year	Balance
2004	3,502,827	2003	3,509,408	2002	3,326,821	2001	3,201,645
2000	3,194,365	1999	2,885,060	1998	2,881,244	1997	2,777,920
1996	2,563,446	1995	2,514,945	1994	2,413,239	1993	2,403,788
1992	2,359,141	1991	2,268,721	1990	2,196,761	1989	2,145,992
1988	2,118,785	1987	2,096,297	1986	2,081,101	1985	2,037,626
1984	2,025,613	1983	1,996,581	1982	1,938,105	1981	1,912,882
1980	1,868,244	1979	1,842,289	1978	1,831,946	1977	1,808,995
1976	1,789,239	1975	1,750,678	1974	1,738,467	1973	1,727,719
1972	1,706,211	1971	1,708,952	1970	1,697,604	1969	1,699,876
1968	1,695,383	1967	1,660,510	1966	1,618,924	1965	1,612,084
1964	1,604,814	1963	1,600,207	1962	1,593,062	1961	1,586,089
1960	1,564,746						

Curve: S0 ASL: 148 SSD: 2.86E+11 IV: 36

Year	Balance	Year	Balance	Year	Balance	Year	Balance
2004	3,487,276	2003	3,494,735	2002	3,313,000	2001	3,188,727
2000	3,182,277	1999	2,873,879	1998	2,871,028	1997	2,768,618
1996	2,555,145	1995	2,507,695	1994	2,407,049	1993	2,398,638
1992	2,354,980	1991	2,265,548	1990	2,194,593	1989	2,144,826
1988	2,118,599	1987	2,097,053	1986	2,082,749	1985	2,040,132
1984	2,028,940	1983	2,000,681	1982	1,942,959	1981	1,918,471
1980	1,874,542	1979	1,849,269	1978	1,839,567	1977	1,817,210
1976	1,798,005	1975	1,759,965	1974	1,748,239	1973	1,737,924
1972	1,716,803	1971	1,719,875	1970	1,708,795	1969	1,711,271
1968	1,706,910	1967	1,672,116	1966	1,630,579	1965	1,623,743
1964	1,616,411	1963	1,611,671	1962	1,604,322	1961	1,597,072
1960	1,575,384						

Curve: R1 ASL: 148 SSD: 5.51E+11 IV: 50

Year	Balance	Year	Balance	Year	Balance	Year	Balance
2004	3,443,882	2003	3,452,150	2002	3,271,214	2001	3,147,615
2000	3,141,887	1999	2,834,058	1998	2,831,643	1997	2,729,702
1996	2,516,532	1995	2,469,274	1994	2,368,780	1993	2,360,519
1992	2,317,058	1991	2,227,796	1990	2,156,958	1989	2,107,286
1988	2,081,163	1987	2,059,753	1986	2,045,632	1985	2,003,224
1984	1,992,269	1983	1,964,290	1982	1,906,849	1981	1,882,645
1980	1,839,012	1979	1,814,047	1978	1,804,690	1977	1,782,720
1976	1,763,937	1975	1,726,338	1974	1,715,078	1973	1,705,279
1972	1,684,714	1971	1,688,396	1970	1,677,989	1969	1,681,201
1968	1,677,651	1967	1,643,711	1966	1,603,039	1965	1,597,101
1964	1,590,730	1963	1,587,019	1962	1,580,768	1961	1,574,685
1960	1,554,225						

Curve: L0.5 ASL: 148 SSD: 5.79E+11 IV: 52

Year	Balance	Year	Balance	Year	Balance	Year	Balance
2004	3,425,178	2003	3,434,803	2002	3,255,174	2001	3,132,919
2000	3,128,427	1999	2,821,897	1998	2,820,818	1997	2,720,131
1996	2,508,286	1995	2,462,383	1994	2,363,232	1993	2,356,272
1992	2,314,032	1991	2,225,968	1990	2,156,325	1989	2,107,826
1988	2,082,831	1987	2,062,492	1986	2,049,371	1985	2,007,908
1984	1,997,842	1983	1,970,685	1982	1,914,031	1981	1,890,577
1980	1,847,653	1979	1,823,359	1978	1,814,616	1977	1,793,201
1976	1,774,919	1975	1,737,780	1974	1,726,937	1973	1,717,492
1972	1,697,231	1971	1,701,154	1970	1,690,921	1969	1,694,238
1968	1,690,717	1967	1,656,751	1966	1,616,024	1965	1,609,989
1964	1,603,456	1963	1,599,515	1962	1,592,966	1961	1,586,516
1960	1,565,625						

Curve: S-0.5 ASL: 148 SSD: 8.59E+11 IV: 63

Year	Balance	Year	Balance	Year	Balance	Year	Balance
2004	3,392,606	2003	3,402,572	2002	3,223,291	2001	3,101,307
2000	3,097,140	1999	2,790,840	1998	2,789,913	1997	2,689,420
1996	2,477,669	1995	2,431,796	1994	2,332,663	1993	2,325,736
1992	2,283,578	1991	2,195,594	1990	2,126,009	1989	2,077,566
1988	2,052,649	1987	2,032,424	1986	2,019,464	1985	1,978,193
1984	1,968,353	1983	1,941,464	1982	1,885,090	1981	1,861,931
1980	1,819,320	1979	1,795,357	1978	1,786,980	1977	1,765,969
1976	1,748,123	1975	1,711,439	1974	1,701,073	1973	1,692,145
1972	1,672,431	1971	1,676,941	1970	1,667,340	1969	1,671,333
1968	1,668,539	1967	1,635,329	1966	1,595,362	1965	1,590,105
1964	1,584,388	1963	1,581,304	1962	1,575,652	1961	1,570,140
1960	1,550,220						

Curve: R0.5 ASL: 148 SSD: 1.07E+12 IV: 70

Year	Balance	Year	Balance	Year	Balance	Year	Balance
2004	3,370,910	2003	3,381,280	2002	3,202,398	2001	3,080,751
2000	3,076,945	1999	2,770,929	1998	2,770,221	1997	2,669,962
1996	2,458,363	1995	2,412,586	1994	2,313,529	1993	2,306,676
1992	2,264,617	1991	2,176,718	1990	2,107,192	1989	2,058,796
1988	2,033,932	1987	2,013,775	1986	2,000,906	1985	1,959,739
1984	1,950,017	1983	1,923,268	1982	1,867,035	1981	1,844,018
1980	1,801,556	1979	1,777,747	1978	1,769,542	1977	1,748,724
1976	1,731,090	1975	1,694,626	1974	1,684,493	1973	1,675,823
1972	1,656,387	1971	1,661,202	1970	1,651,937	1969	1,656,299
1968	1,653,910	1967	1,621,127	1966	1,581,593	1965	1,576,784
1964	1,571,548	1963	1,568,979	1962	1,563,876	1961	1,558,947
1960	1,539,641						

Curve: L0 ASL: 148 SSD: 1.15E+12 IV: 73

Year	Balance	Year	Balance	Year	Balance	Year	Balance
------	---------	------	---------	------	---------	------	---------

2004	3,349,751	2003	3,361,073	2002	3,183,100	2001	3,062,459
2000	3,059,516	1999	2,754,502	1998	2,754,891	1997	2,655,640
1996	2,445,205	1995	2,400,683	1994	2,302,913	1993	2,297,332
1992	2,256,471	1991	2,169,782	1990	2,101,512	1989	2,054,390
1988	2,030,785	1987	2,011,847	1986	2,000,136	1985	1,960,095
1984	1,951,458	1983	1,925,733	1982	1,870,516	1981	1,848,500
1980	1,807,021	1979	1,784,177	1978	1,776,892	1977	1,756,943
1976	1,740,127	1975	1,704,460	1974	1,695,091	1973	1,687,123
1972	1,668,343	1971	1,673,746	1970	1,664,991	1969	1,669,784
1968	1,667,727	1967	1,635,210	1966	1,595,916	1965	1,591,297
1964	1,586,163	1963	1,583,602	1962	1,578,411	1961	1,573,288
1960	1,553,691						

Curve: O1 ASL: 148 SSD: 1.77E+12 IV: 90

Year	Balance	Year	Balance	Year	Balance	Year	Balance
2004	3,297,939	2003	3,310,412	2002	3,133,584	2001	3,013,889
2000	3,012,005	1999	2,707,802	1998	2,708,799	1997	2,610,223
1996	2,400,195	1995	2,355,899	1994	2,258,279	1993	2,252,834
1992	2,212,177	1991	2,125,641	1990	2,057,427	1989	2,010,307
1988	1,986,702	1987	1,967,797	1986	1,956,180	1985	1,916,255
1984	1,907,766	1983	1,882,247	1982	1,827,222	1981	1,805,391
1980	1,764,100	1979	1,741,446	1978	1,734,395	1977	1,714,729
1976	1,698,241	1975	1,662,913	1974	1,653,907	1973	1,646,368
1972	1,628,060	1971	1,634,008	1970	1,625,885	1969	1,631,397
1968	1,630,169	1967	1,598,543	1966	1,560,146	1965	1,556,467
1964	1,552,366	1963	1,550,939	1962	1,546,984	1961	1,543,209
1960	1,525,057						

Curve: O2 ASL: 148 SSD: 2.31E+12 IV: 103

Year	Balance	Year	Balance	Year	Balance	Year	Balance
2004	3,249,109	2003	3,263,127	2002	3,087,805	2001	2,969,550
2000	2,969,075	1999	2,666,213	1998	2,668,484	1997	2,571,155
1996	2,362,308	1995	2,319,135	1994	2,222,606	1993	2,218,225
1992	2,178,620	1991	2,093,106	1990	2,025,878	1989	1,979,717
1988	1,957,052	1987	1,939,077	1986	1,928,379	1985	1,889,359
1984	1,881,762	1983	1,857,125	1982	1,802,962	1981	1,781,974
1980	1,741,511	1979	1,719,668	1978	1,713,419	1977	1,694,547
1976	1,678,843	1975	1,644,285	1974	1,636,037	1973	1,629,250
1972	1,611,687	1971	1,618,373	1970	1,610,986	1969	1,617,231
1968	1,616,734	1967	1,585,829	1966	1,548,136	1965	1,545,150
1964	1,541,738	1963	1,540,996	1962	1,537,722	1961	1,534,624
1960	1,517,142						

Curve: O3 ASL: 148 SSD: 5.10E+12 IV: 153

Year	Balance	Year	Balance	Year	Balance	Year	Balance
2004	3,063,367	2003	3,082,827	2002	2,912,823	2001	2,799,641

2000	2,804,155	1999	2,506,027	1998	2,512,781	1997	2,419,869
1996	2,215,179	1995	2,175,956	1994	2,083,266	1993	2,082,651
1992	2,046,789	1991	1,964,921	1990	1,901,215	1989	1,858,489
1988	1,839,212	1987	1,824,600	1986	1,817,253	1985	1,781,553
1984	1,777,244	1983	1,755,878	1982	1,704,925	1981	1,687,091
1980	1,649,734	1979	1,630,950	1978	1,627,744	1977	1,611,900
1976	1,599,201	1975	1,567,610	1974	1,562,296	1973	1,558,436
1972	1,543,784	1971	1,553,377	1970	1,548,901	1969	1,558,060
1968	1,560,486	1967	1,532,481	1966	1,497,628	1965	1,497,448
1964	1,496,837	1963	1,498,896	1962	1,498,422	1961	1,498,119
1960	1,483,414						

<b>Curve:</b>	<b>O4</b>	<b>ASL: 148</b>	<b>SSD: 9.58E+12</b>	<b>IV: 210</b>			
<b>Year</b>	<b>Balance</b>	<b>Year</b>	<b>Balance</b>	<b>Year</b>	<b>Balance</b>	<b>Year</b>	<b>Balance</b>
2004	2,860,800	2003	2,885,704	2002	2,721,029	2001	2,612,915
2000	2,622,429	1999	2,329,022	1998	2,340,224	1997	2,251,715
1996	2,051,144	1995	2,015,816	1994	1,926,924	1993	1,930,049
1992	1,897,933	1991	1,819,725	1990	1,759,561	1989	1,720,301
1988	1,704,464	1987	1,693,296	1986	1,689,408	1985	1,657,159
1984	1,656,293	1983	1,638,379	1982	1,590,832	1981	1,576,361
1980	1,542,338	1979	1,526,859	1978	1,526,962	1977	1,514,435
1976	1,505,050	1975	1,476,748	1974	1,474,709	1973	1,474,137
1972	1,462,774	1971	1,475,672	1970	1,474,527	1969	1,487,041
1968	1,492,852	1967	1,468,219	1966	1,436,683	1965	1,439,793
1964	1,442,485	1963	1,447,859	1962	1,450,711	1961	1,453,742
1960	1,442,362						



**Kentucky Power Company**

**360.2 - Land Rights**

**Calculation of Remaining Life  
Based Upon Broad Group/Vintage Group Procedures  
Related to Original Cost as of December 31, 2004**

Survivor Curve .. IOWA: 75 R4

<u>Year</u> (1)	<u>Age</u> (2)	<u>Surviving</u> <u>Investment</u> (3)	<u>BG/VG Average</u>		<u>ASL</u> <u>Weights</u> (6)=(3)/(4)	<u>RL</u> <u>Weights</u> (7)=(6)*(5)
			<u>Service</u> <u>Life</u> (4)	<u>Remaining</u> <u>Life</u> (5)		
2004	0.5	0	75.00	74.50	0	0
2003	1.5	200,095	75.00	73.50	2,668	196,095
2002	2.5	139,027	75.00	72.50	1,854	134,396
2001	3.5	14,031	75.00	71.50	187	13,377
2000	4.5	333,523	75.00	70.50	4,447	313,533
1999	5.5	9,812	75.00	69.51	131	9,094
1998	6.5	115,019	75.00	68.51	1,534	105,064
1997	7.5	232,415	75.00	67.51	3,099	209,209
1996	8.5	56,473	75.00	66.51	753	50,084
1995	9.5	112,630	75.00	65.52	1,502	98,391
1994	10.5	14,843	75.00	64.52	198	12,769
1993	11.5	51,997	75.00	63.53	693	44,043
1992	12.5	100,288	75.00	62.53	1,337	83,618
1991	13.5	80,585	75.00	61.54	1,074	66,122
1990	14.5	58,022	75.00	60.55	774	46,840
1989	15.5	32,983	75.00	59.56	440	26,191
1988	16.5	27,903	75.00	58.56	372	21,789
1987	17.5	20,110	75.00	57.58	268	15,438
1986	18.5	49,917	75.00	56.59	666	37,663
1985	19.5	16,564	75.00	55.60	221	12,280
1984	20.5	34,468	75.00	54.62	460	25,102
1983	21.5	65,458	75.00	53.64	873	46,813
1982	22.5	30,218	75.00	52.66	403	21,216
1981	23.5	50,609	75.00	51.68	675	34,873
1980	24.5	30,785	75.00	50.71	410	20,813
1979	25.5	14,240	75.00	49.73	190	9,443
1978	26.5	27,453	75.00	48.77	366	17,850
1977	27.5	24,000	75.00	47.80	320	15,296
1976	28.5	43,688	75.00	46.84	583	27,284
1975	29.5	15,879	75.00	45.88	212	9,714
1974	30.5	14,272	75.00	44.93	190	8,550
1973	31.5	25,482	75.00	43.98	340	14,943
1972	32.5	0	75.00	43.04	0	0
1971	33.5	14,692	75.00	42.10	196	8,247
1970	34.5	404	75.00	41.16	5	222

1969	35.5	7,417	75.00	40.24	99	3,979
1968	36.5	38,947	75.00	39.32	519	20,417
1967	37.5	45,749	75.00	38.40	610	23,424
1966	38.5	9,592	75.00	37.49	128	4,795
1965	39.5	9,969	75.00	36.59	133	4,864
1964	40.5	7,158	75.00	35.70	95	3,407
1963	41.5	9,701	75.00	34.81	129	4,503
1962	42.5	9,449	75.00	33.94	126	4,276
1961	43.5	24,004	75.00	33.07	320	10,583
1960	44.5	18,251	75.00	32.21	243	7,837
1959	45.5	19,382	75.00	31.35	258	8,103
1958	46.5	40,564	75.00	30.51	541	16,501
1957	47.5	21,469	75.00	29.68	286	8,495
1956	48.5	28,214	75.00	28.85	376	10,854
1955	49.5	21,701	75.00	28.04	289	8,112
1954	50.5	43,477	75.00	27.23	580	15,786
1953	51.5	38,366	75.00	26.44	512	13,524
1952	52.5	52,474	75.00	25.65	700	17,947
1951	53.5	129,979	75.00	24.88	1,733	43,114
1950	54.5	103,729	75.00	24.11	1,383	33,349
1949	55.5	150,733	75.00	23.36	2,010	46,943
1948	56.5	263,255	75.00	22.61	3,510	79,375
1947	57.5	225,093	75.00	21.88	3,001	65,664
1946	58.5	141,871	75.00	21.15	1,892	40,014
1945	59.5	15,476	75.00	20.44	206	4,218
1944	60.5	5,990	75.00	19.73	80	1,576
1943	61.5	41,661	75.00	19.04	555	10,574
1942	62.5	14,572	75.00	18.35	194	3,565
1941	63.5	20,163	75.00	17.67	269	4,751
1940	64.5	19,280	75.00	17.00	257	4,370
1939	65.5	27,083	75.00	16.35	361	5,902
1938	66.5	21,765	75.00	15.70	290	4,557
1937	67.5	7,379	75.00	15.07	98	1,483

3,691,802

49,224 2,293,224

AVERAGE SERVICE LIFE 75.00  
AVERAGE REMAINING LIFE 46.59