

RECEIVED
JUL 27 2006
PUBLIC SERVICE
COMMISSION

July 2, 2006

FACSIMILE AND MAIL

Ms. Elizabeth O'Donnell
Executive Director
Public Service Commission
211 Sower Boulevard
Frankfort, KY 40602

Re: PSC Case No. 2005-00053

Dear Ms. O'Donnell:

Please find enclosed for filing with the Commission in the above-referenced case an original and ten copies of the maps referenced as Attachments A and B to the revised Site Assessment Report for the J.K. Smith Generating Station, Application Exhibit 14-Supplement, prepared for East Kentucky Power Cooperative, Inc., ("EKPC"), by Jason Associates Corporation. These maps were inadvertently omitted from the copies of the report that were filed on July 25, 2006, and we regret any inconvenience.

Very truly yours,



Charles A. Lile
Senior Corporate Counsel

Enclosures

Cc: Service List
Dr. John A. Rogness III
Richard Raff, Esq.

RECEIVED

JUL 27 2006

PUBLIC SERVICE
COMMISSION

Attachment A

East Kentucky Power Cooperative
4775 Lexington Road, PO Box 707
Winchester, Kentucky 40392
Phone (859)744-8112 www.ekpc.coop Fax (859)744-6008

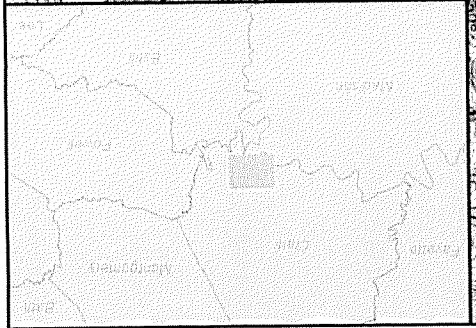
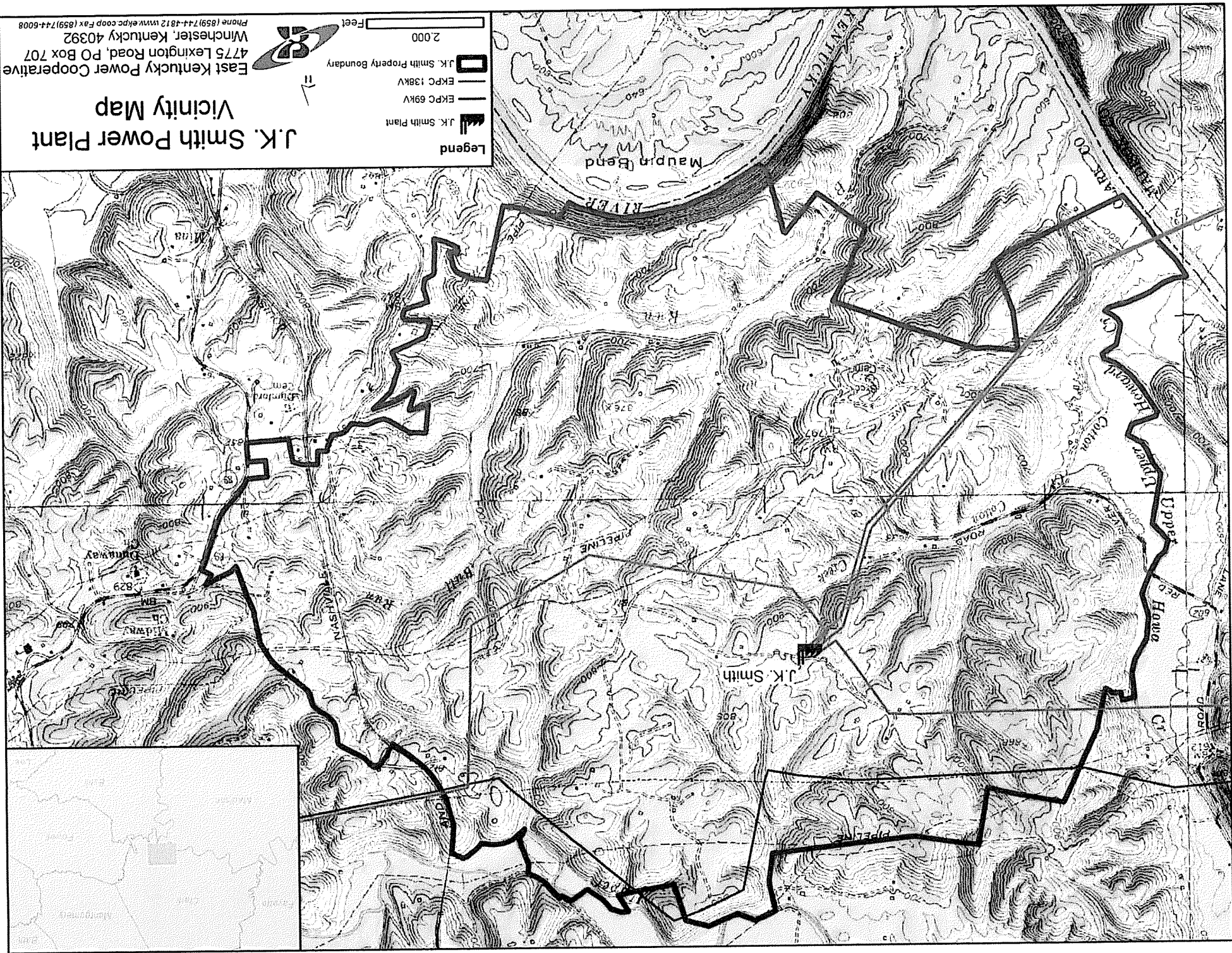


J.K. Smith Power Plant Vicinity Map

Legend

- J.K. Smith Property Boundary
- EKPC 138KV
- EKPC 69KV
- J.K. Smith Plant

2,000 Feet



RECEIVED

JUL 27 2006

PUBLIC SERVICE
COMMISSION

Attachment B

