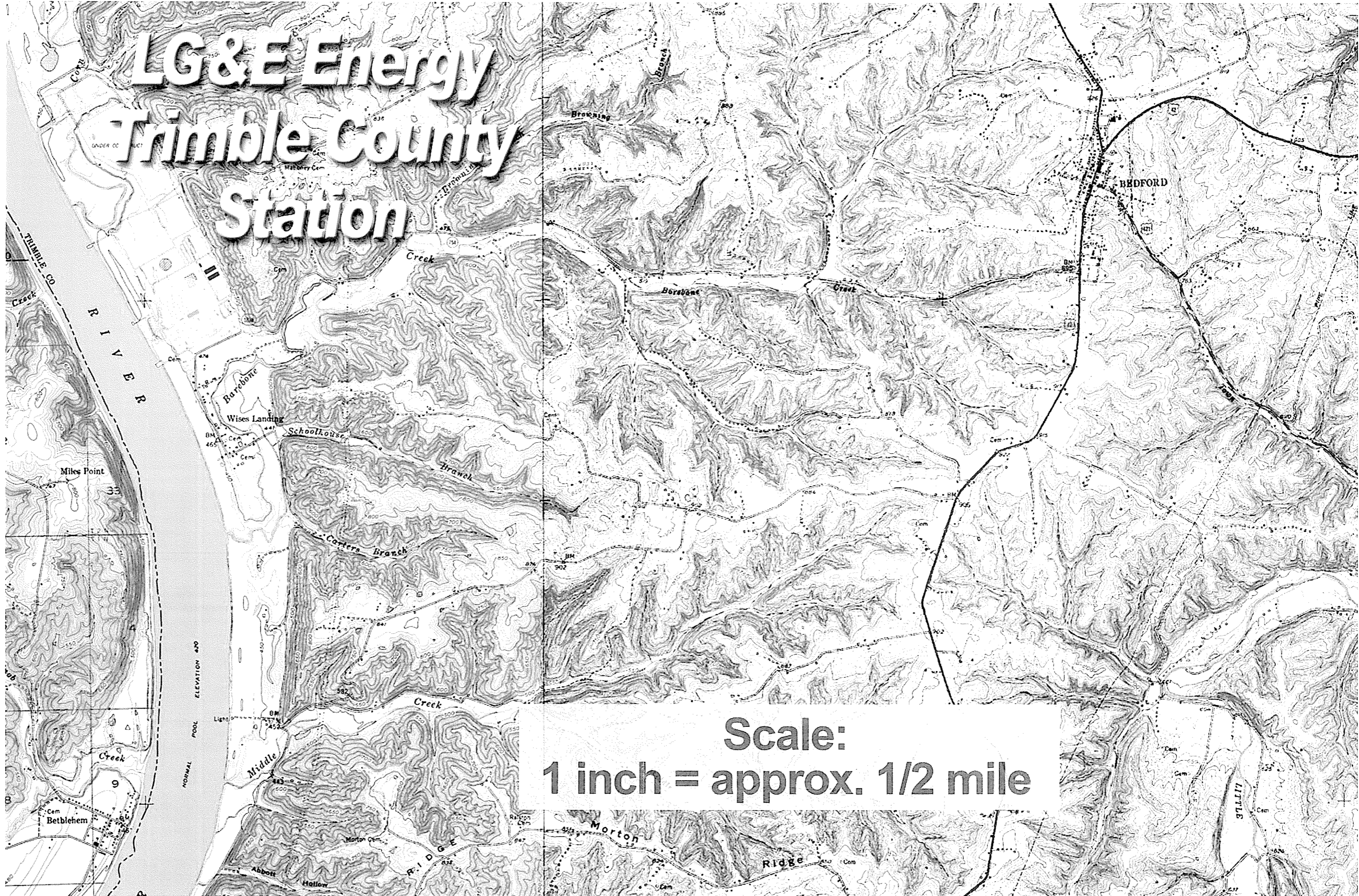


LG&E Energy
Trimble County
Station

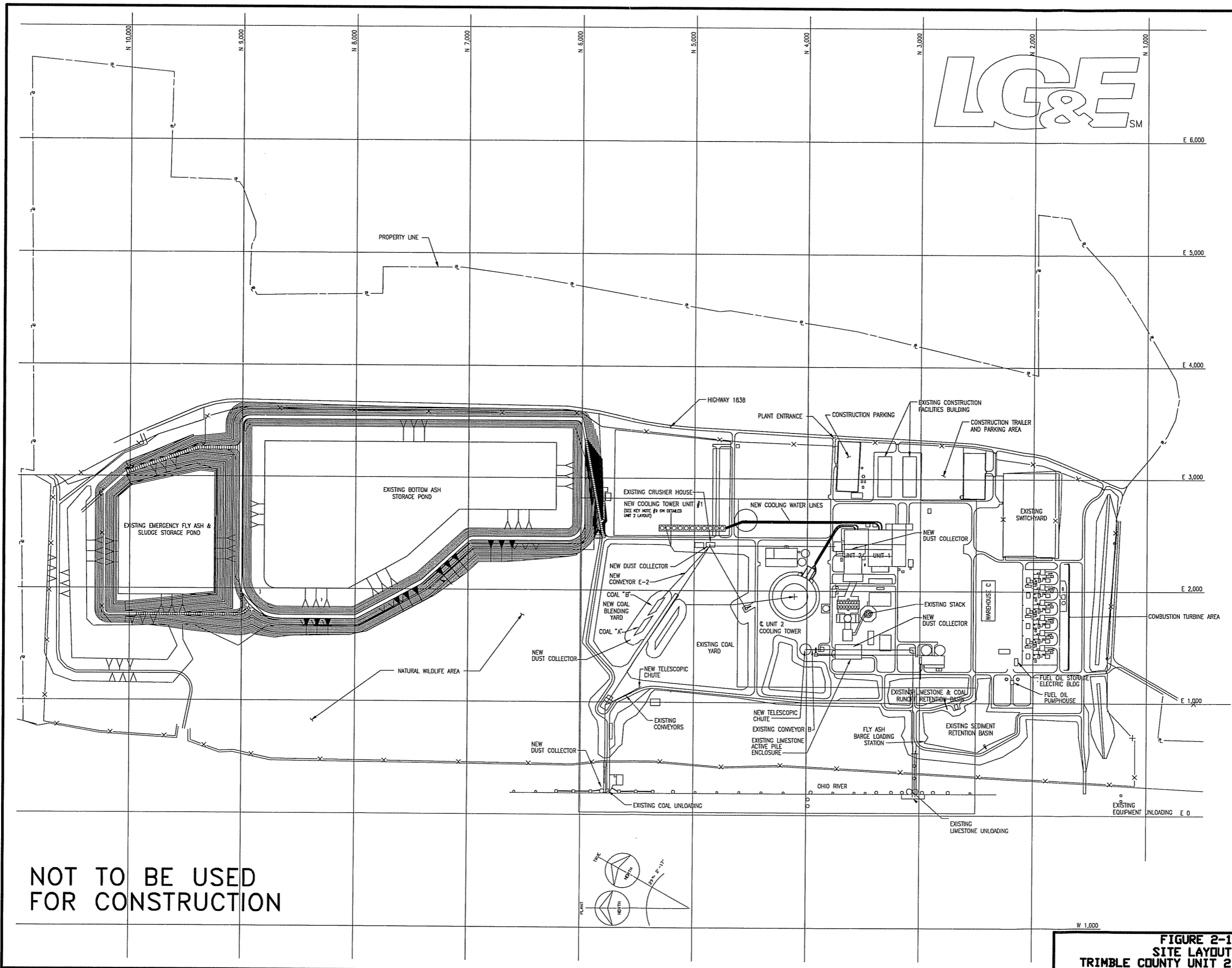
Scale: 1:48,000
1 inch = approx. 3/4 mile

LG&E Energy Trimble County Station

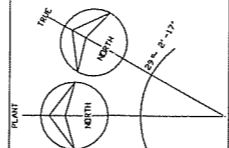


Scale:
1 inch = approx. 1/2 mile

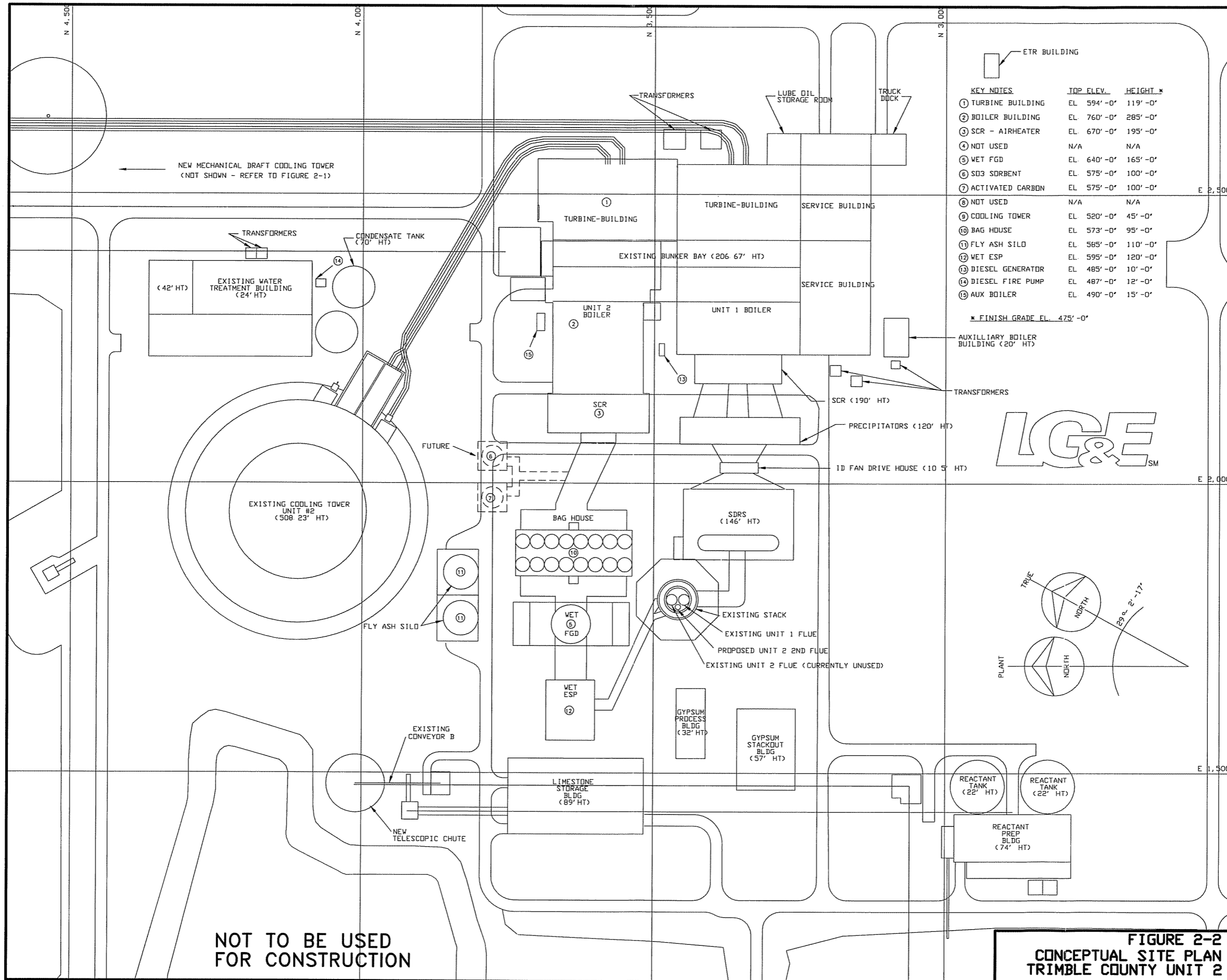
LG&ESM



NOT TO BE USED
FOR CONSTRUCTION



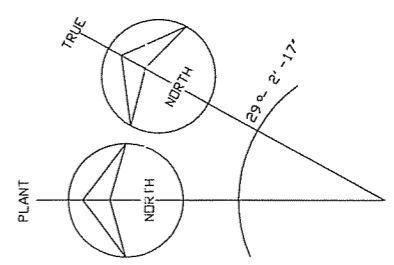
W 1,000
**FIGURE 2-1
SITE LAYOUT
TRIMBLE COUNTY UNIT 2**



KEY NOTES

| | JOP ELEV. | HEIGHT * |
|--------------------|-------------|----------|
| ① TURBINE BUILDING | EL. 594'-0" | 119'-0" |
| ② BOILER BUILDING | EL. 760'-0" | 285'-0" |
| ③ SCR - AIRHEATER | EL. 670'-0" | 195'-0" |
| ④ NOT USED | N/A | N/A |
| ⑤ WET FGD | EL. 640'-0" | 165'-0" |
| ⑥ SO3 SORBENT | EL. 575'-0" | 100'-0" |
| ⑦ ACTIVATED CARBON | EL. 575'-0" | 100'-0" |
| ⑧ NOT USED | N/A | N/A |
| ⑨ COOLING TOWER | EL. 520'-0" | 45'-0" |
| ⑩ BAG HOUSE | EL. 573'-0" | 95'-0" |
| ⑪ FLY ASH SILO | EL. 565'-0" | 110'-0" |
| ⑫ WET ESP | EL. 595'-0" | 120'-0" |
| ⑬ DIESEL GENERATOR | EL. 485'-0" | 10'-0" |
| ⑭ DIESEL FIRE PUMP | EL. 487'-0" | 12'-0" |
| ⑮ AUX BOILER | EL. 490'-0" | 15'-0" |

* FINISH GRADE EL. 475'-0"



NOT TO BE USED FOR CONSTRUCTION

FIGURE 2-2
CONCEPTUAL SITE PLAN
TRIMBLE COUNTY UNIT 2