

COMMONWEALTH OF KENTUCKY
BEFORE THE PUBLIC SERVICE COMMISSION

In the Matter of:

KENTUCKY POWER COMPANY)	
_____)	
ALLEGED FAILURE TO COMPLY)	CASE NO. 2016-00279
WITH KRS 278.042)	

ORDER

Kentucky Power Company ("Kentucky Power"), a Kentucky corporation, engages in, among other things, the distribution of electricity to the public for compensation and is a utility subject to Commission jurisdiction.

KRS 278.042 requires the Commission to ensure that each electric utility constructs and maintains its plant and facilities in accordance with accepted engineering practices as set forth in the Commission's administrative regulations and orders and the most recent edition of the National Electrical Safety Code ("NESC").

807 KAR 5:006, Section 26(4)(e), requires an electric utility to inspect, at intervals not to exceed two years, all of its electric facilities operating at voltages of less than 69 kilovolts ("kV") to the point of service for damage, deterioration, and vegetation management consistent with the utility's vegetation management practices.

KRS 278.030 requires every utility to furnish adequate, efficient and reasonable service. KRS 278.260 permits the Commission, upon its own motion, to investigate any act or practice of a utility that affects or is related to the service of a utility. KRS

278.280(1) further permits the Commission, after conducting such investigation and finding that a practice is unreasonable, unsafe, improper, or inadequate, to determine the reasonable, safe, proper, or adequate practice or methods to be observed and to fix the same by Order.

Pursuant to KRS 278.280(2), which directs the Commission to prescribe rules and regulations for the performance of service by utilities, the Commission has promulgated Administrative Regulation 807 KAR 5:006, Section 26, which requires all utilities to adopt and file with the Commission inspection procedures to assure safe and adequate operation of the utility's facilities. 807 KAR 5:006, Section 26(4)(e), further requires utilities to inspect, at intervals not to exceed two years, all electric facilities operating at voltages of less than 69 kV. As part of the investigation into the subject incident, Kentucky Power provided to the Commission inspection program guidelines entitled "AEP – Kentucky Overhead/Underground Circuit Facilities Inspection and Maintenance" ("Kentucky Power Inspection Plan").¹

Commission Staff completed an Incident Investigation Staff Report ("Staff Report") on February 6, 2015. The Staff Report alleges that on July 12, 2014, Jason Michal Grace and Jason Hammons were working to clear brush and weeds on property owned by Wilson Page, located at Stafford Cemetery Road in Paintsville, Kentucky. At approximately 4:00 p.m. Eastern Daylight Time ("EDT"), Mr. Grace was reportedly injured when the metal blade on the weed trimmer he was operating made contact with a 2/3 service drop, or energized triplex conductor, that was attached to Kentucky Power

¹ Kentucky Power provided its current procedures for distribution system inspections on July 30, 2014. The same is provided as Attachment E to the Staff Report, attached hereto as the Appendix.

pole #38830784C00009. The energized triplex conductor was on the ground, entangled in weeds and vines. Mr. Grace was treated for flash burns on his hands and released from the hospital the same day.

According to Kentucky Power, the incident occurred at approximately 4:00 p.m. EDT, on Saturday,² July 12, 2014.³ Kentucky Power received a trouble ticket reporting the incident at 5:40 p.m. EDT, Line Crew Supervisor Dennis Massey arrived on the scene at 6:50 p.m. EDT⁴ to investigate and learned at that time that Mr. Grace had gone to the medical center for treatment.⁵ Commission Staff received notice of the incident at approximately 8:00 p.m. EDT the same day and investigated the incident the afternoon of July 14, 2014. Thereafter, Commission Staff prepared the Staff Report, which opined that Kentucky Power did not meet certain requirements under the NESC.⁶ The Staff Report further alleges that a closer inspection all the way down to the point of service, pursuant to 807 KAR 5:006, Section 26(4)(e), could have enabled discovery of this issue.⁷

Based on Commission Staff's investigation of the incident as set forth in the Staff Report and the information provided by Kentucky Power in its summary report

² Although Kentucky Power's written summary report indicated that the incident occurred on a Friday, the date of July 12, 2014, fell on a Saturday. The Kentucky Power outage report, provided as Attachment C to the company's written summary report, confirms that the incident occurred on a Saturday.

³ Staff Report, Attachment C.

⁴ *Id.*

⁵ *Id.*, Attachments A and C.

⁶ Staff Report, at 5.

⁷ *Id.*

("Kentucky Power Summary Report") (Attachment A to the Staff Report), Commission Staff alleges that Kentucky Power has violated a provision of the NESC, the Kentucky Power Inspection Plan, and KRS 278.042, which requires an electric utility to construct and maintain its plant and facilities in accordance with accepted engineering practices as set forth in the Commission's administrative regulations and orders and in the most recent edition of the NESC. The alleged violations are listed below:

- a. NESC, Part 2, Section 23, Rule 232.B.1 – Safety Rules for the Installation and Maintenance of Overhead Electric Supply and Communication Lines – Clearances – Vertical clearances of wires, conductors, cables, and equipment above ground, roadway, rail, or water surfaces – Clearance of wires, conductors, cables, equipment, and support arms mounted on supporting structures – Clearance to wires, conductors, and cables – The vertical clearance of wires, conductors, and cables above ground in generally accessible places, roadway, rail, or water surfaces, shall be not less than shown in Table 232-1.
- b. Kentucky Power – Kentucky Overhead/Underground Circuit Facilities Inspection and Maintenance:

Objective: The objective of this program is to visually inspect all overhead and the external, above ground portions of the underground facilities on a 2 year cycle to identify and correct deficiencies necessary for the safety of employees and the public under the conditions specified in the NESC and for system reliability.

Activities Included In Program for Overhead Facilities: The program consists of a visual inspection of poles (including foreign owned poles with company owned attachments), conductors, and pole-mounted equipment (transformer, regulators, reclosers, capacitors, etc.) and related materials (insulators, brackets, terminations, cutouts, surge arresters, etc.) owned by the company. It includes inspection of foreign attachments (CATV, telephone, etc.) to the company's poles for any safety related electrical or mechanical defects. Electrical and mechanical defects

observed will be identified and the information will be collected so appropriate corrective action can be taken. Driving or foot patrol inspections are conducted as appropriate looking for obvious defects such as loose down guys, broken grounds, cracked insulators, lightning arresters with blown isolators, deteriorated crossarms having inadequate strength, etc.

Inspection/Collection: AEP personnel and contractors inspect and maintain overhead and underground facilities as part of the 2 year cycle for the examination and distribution assets to identify defects and areas requiring attention. Detail circuit maps are provided as needed by graphics personnel to be used for the inspection program which also allows for any field corrections to be documented for follow up. A listing of items to be checked as a part of this inspection is on the attached page 3.

How The Program Fits Into Overall Operations and Maintenance Plans: This program is designed to proactively identify defects involving company owned overhead and above ground portions of underground facilities so that appropriate action can be taken to reduce the possibility of an accident or correct a condition that would adversely affect system operation. The corrective actions taken are to include necessary maintenance and replacement as a part of this program. If defects should be discovered that pose a safety risk, then timely corrective action by qualified personnel is required

Based on its review of the Staff Report and Kentucky Power Summary Report, and being otherwise sufficiently advised, the Commission finds that *prima facie* evidence exists that Kentucky Power has failed to comply with KRS 278.042, the most recent edition of NESC, and the Kentucky Power Inspection Plan. The Commission further finds that a formal investigation into the incident that is the subject matter of the Staff Report should be conducted and that this investigation should also examine the adequacy, safety, and reasonableness of Kentucky Power's practices related to the construction, installation and repair of electric facilities.

The Commission, on its own motion, HEREBY ORDERS that:

1. Kentucky Power shall submit to the Commission a written response to the allegations contained in the Staff Report within 20 days of the date of this Order.

2. Kentucky Power shall appear on October 18, 2016, at 9:00 a.m. EDT, in Hearing Room 1 of the Commission's offices at 211 Sower Boulevard, Frankfort, Kentucky, for the purpose of presenting evidence concerning the alleged violations of KRS 278.042, the most recent edition of NESC, and the Kentucky Power Inspection Plan, and showing cause why it should not be subject to the penalties prescribed in KRS 278.990(1), for these alleged violations.

3. The October 18, 2016 hearing shall be recorded by videotape only.

4. The Staff Report attached hereto as an Appendix to this Order is made a part of the record in this case.

5. At the scheduled hearing in this matter, Kentucky Power shall also present evidence on the adequacy, safety, and reasonableness of its practices related to the construction, installation, and repair of electric facilities as they relate to the facts of this case and whether such practices require revision as related to this incident.

6. Any request for an informal conference with Commission Staff to discuss the issues in this case shall be set forth in writing and filed with the Commission within 20 days of the date of this Order.

By the Commission

ENTERED
AUG 09 2016
KENTUCKY PUBLIC
SERVICE COMMISSION

ATTEST:



Executive Director

Case No. 2016-00279

APPENDIX

APPENDIX TO AN ORDER OF THE KENTUCKY PUBLIC SERVICE
COMMISSION IN CASE NO. 2016-00279 DATED **AUG 09 2016**



Commonwealth of Kentucky
Public Service Commission
211 Sower Blvd.
P.O. Box 615
Frankfort, Kentucky 40602-0615
Telephone: (502) 564-3940
Fax: (502) 564-1582
psc.ky.gov

Incident Investigation Staff Report

Report Date: February 6, 2015

Incident Date: July 12, 2014

Serving Utility: AEP/Kentucky Power Company

Incident Location: Stafford Cemetery Road,
Paintsville, Kentucky
Johnson County

Victim: Jason Michal Grace

PSC Investigators: Scott Morris, Jeff Moore



Utility: AEP/Kentucky Power Company

Reported By: Dennis Massey – LCS NE Pikeville District
Robert Shurtleff – Customer & Distribution Services Manger Pikeville

Incident Occurred: Approximately 4:00 p.m., July 12, 2014

Utility Discovered: Approximately 6:50 p.m., July 12, 2014

PSC Notified by phone call: Approximately 8:00 p.m., July 12, 2014

Utility Incident Investigation Information

Received by (e-mail): 10:35 a.m., July 13, 2014

PSC Investigated: Afternoon on July 14, 2014

Utility Request for extension to file 7-day summary report July 17, 2014

Report Received (Mail): July 28, 2014

Additional Information Request - Procedures for Distribution System Inspections by (e-mail): July 30, 2014, September 26, 2014

Incident Location: Stafford Cemetery Road, Paintsville, Kentucky
Johnson County

Victim Name: Jason Michal Grace

Witness Name: Jason Hammonds

Information From:

<u>Name:</u>	<u>Position:</u>	<u>Employer:</u>
Dennis Massey	Line Crew Supervisor, NE Pikeville District	AEP/Kentucky Power Company
Robert Shurtleff	Customer & Distribution Manger, Pikeville	AEP/Kentucky Power Company

This investigator did not observe the site immediately after the incident occurred; an on-site investigation was performed two days after the incident. The discussion and conclusions reached herein are based upon information and photographs obtained from AEP/Kentucky Power Company ("Kentucky Power"), and information the utility obtained from witness Jason Hammons, and Fire Chief John VanHoose of the W.R. Castle Fire Department, who responded to the incident scene after a call for a brush fire at this location. At the time this investigation report was written, Kentucky Power reported they had not received a written report from the W.R. Castle Fire Department.

Incident Description:

According to information gathered during the investigation, it appears that Jason Michal Grace and Jason Hammons were working to clear brush and weeds on property owned by Wilson Page, located at Stafford Cemetery Road in Paintsville, Kentucky. On July 12, 2014, at approximately 4:00 p.m., Mr. Grace was reportedly injured when the metal blade on the weed eater he was operating made contact with a 2/3 service drop (energized triplex conductor) attached to Kentucky Power pole #38830784C00009 ("pole"). The energized triplex conductor was lying on the ground entangled in weeds and vines. Mr. Grace was treated for flash burns on his hands at Paul B. Hall Medical Center, and released on the same day of the incident.

Discussion:

Kentucky Power received a trouble ticket reporting a possible public contact at approximately 5:40 p.m. on Friday, July 12, 2014, as noted in the utility summary report (Attachment A). According to information provided by Kentucky Power Pikeville District Customer & Distribution Manger, Robert Shurtleff, the utility became aware that Mr. Grace went to the medical center for treatment shortly after 6:50 p.m. on July 12, 2014. To make the PSC aware of this incident, the Kentucky Power dispatch center called and left a voicemail message on PSC Investigator Jeff Moore's work cell phone at approximately 8:00 p.m. on July 12, 2014 (Attachment B). Mr. Moore called the utility back on the morning of Sunday, July 13, 2014, to follow up. Kentucky Power NE Pikeville District Line Crew Supervisor, Dennis Massey, performed an on-site investigation on July 12, 2014. Mr. Massey sent the utility incident investigation information by e-mail to Mr. Moore at approximately 10:35 a.m. on Sunday, July 13, 2014, along with photographs from the incident site, outage details, and a circuit map of the area (Attachment C).

PSC Investigators Scott Morris and Jeff Moore met with Robert Shurtleff at the incident location to conduct an on-site investigation on the afternoon of July 14, 2014. Mr. Shurtleff brought with him the disconnected triplex conductor, which had been previously removed from the pole by the utility. Mr. Shurtleff was asked to provide photographs of the weed eater used by Mr. Grace, records for the last two system inspections of this circuit (Attachment A), and any records for the name of the customer served at this location and the last known meter at this location, including when the meter was removed.

On July 17, 2014, the PSC received a request from Kentucky Power for an extension to file the 7-day report until July 26, 2014 (Attachment D), which was granted by the PSC Executive Director, Jeff DeRouen, on July 18, 2014. Upon request of this investigator, Kentucky Power provided the current procedures for distribution system inspections on July 30, 2014 (Attachment E).

According to information from the utility investigation (Attachment C), the energized triplex conductor that was attached to the pole measured approximately 47.5 feet in length, and was lying on the ground covered in tall heavy brush, vines, and weeds. At the time of the PSC investigation there were not any structures located within 47.6 feet of the pole, and the energized triplex conductor had been disconnected and removed from the pole by the utility.

Kentucky Power was not able to locate records on the last known meter at this location, who the occupant was, or when the meter was removed. The utility also was not able to obtain a picture of the weed eater used by Mr. Grace. According to information from the utility investigation (Attachment C), this property had been vacant for 10 to 15 years, is difficult to access, and is not easily seen from the roadway. 807 KAR 5:006, Section 26(4)(e), requires two year system inspections of all electric facilities operating at voltages of less than 69 KV, which would include this conductor. Kentucky Power provided documentation for the last two system inspections on this circuit (Attachment A), which includes records for the area where the incident occurred. These records do not appear to indicate any clearance violations at the pole. The AEP-Kentucky system inspection plan provides guidance to identify defects and areas requiring attention, including proper clearance, as noted in Attachment E.

Below is information on the energized triplex conductor as reported from the Kentucky Power incident investigation (Attachment C), and the vertical clearance requirements of conductors based on the 2012 edition of the National Electrical Safety Code (“NESC”).

Line Equipment Measurements/Clearances

Line Clearances At Point of Incident	Measured:	Minimum Allowed by NESC	Applicable NESC Edition 2012*:	Voltage	Construct Date:
Triplex Service	Drop reported lying on ground	12'	2012 Edition	120/240	Unknown

Findings:

It appears that Kentucky Power Company did not meet the following requirement set forth in the 2012 edition of the NESC:

National Electrical Safety Code-1

Part 2: Safety Rules for the Installation and Maintenance of Overhead Electric Supply and Communication Lines

Section 23: Clearances

232: Vertical clearances of wires, conductors, cables, and equipment above ground, roadway, rail, or water surfaces

B. Clearance of wires, conductors, cables, equipment, and support arms mounted on supporting structures.

1. Clearance to wires, conductors, and cables

The vertical clearance of wires, conductors, and cables aboveground in generally accessible places, roadway, rail, or water surfaces, shall be not less than that shown in Table 232-1.

(Table 232-1 on page 98, 2012 edition of NESC, included here as Attachment F).

Investigator Comments:

Kentucky Power's distribution system inspection records for 2012 and 2014 reviewed in this investigation (Attachment A) appear to indicate that the utility was in compliance with performing inspections within the appropriate time frame as required by 807 KAR 5:006, 26(4)(e); however the inspections were not successful in identifying this energized triplex conductor lying on the ground. Based upon the information provided by Kentucky Power, it appears that a closer inspection all the way down to the point of service, pursuant to 807 KAR 5:006, 26(4)(e), could have enabled discovery of this issue. In an effort to better identify and correct any issues within the distribution system, and to ensure compliance with 807 KAR 5:006, 26(4)(e), it is recommended that Kentucky Power re-evaluate their procedures for inspecting their distribution system.

Investigated By: **Name:** **Company:**

Scott Morris

KPSC

Signed:

Scott Morris

Date:

2-6-15

Attachments:

- A. Utility Summary Report**
- B. Utility Notification**
- C. Utility Incident Investigation Information**
- D. Utility request for extension to file 7-day report**
- E. Utility procedures for distribution system inspections**
- F. NESC 2012 Edition, page 98, Table 232-1**
- G. PSC Investigator's Photographs**

Attachment A

Utility Summary Report



Kentucky Power
3249 North Mayo Trail
Pikeville, KY 41501
KentuckyPower.com

Mr. Jeffrey C. Moore
Commonwealth of Kentucky
Public Service Commission
P. O. Box 615
Frankfort, KY. 40602

RECEIVED

JUL 28 2014

PUBLIC SERVICE
COMMISSION

July 24, 2014

RE: 07/12/2014 Public Contact Incident
Stafford Cemetery Road, Paintsville, KY
Kentucky Power Company Pikeville District

Dear Jeff:

This is a follow-up summary of Kentucky Power Company's initial report of the above styled incident that occurred on Stafford Cemetery Road, Paintsville, KY, on Friday, July 12, 2014.

On Friday, July 12, 2014, at approximately 17:40, we received a trouble ticket reporting a possible public contact on Stafford Cemetery Road, Paintsville, KY. Tommy Goble, Kentucky Power Company Line Mechanic A, was dispatched to the scene and was told that Mr. Grace had made contact with an energized service drop that was in the weeds coming from pole 38830784C00009. Kentucky Power Company Distribution Dispatch Center (DDC) then dispatched Dennis Massey, Kentucky Power Company Line Crew Supervisor NE, to the scene to conduct an investigation and determine if a contact was made. Dennis spoke with Jason Hammons, who was contracted to clear the property for Wilson Page (property owner). During the conversation, Mr. Hammons said they were clearing the property with a metal blade weed eater when the metal blade came in contact with the energized service drop that was entangled in the weeds and vines. Mr. Hammons also told Dennis that Mr. Grace was taken to Paul B Hall Medical Center for flash burns on his hands. We were later informed that Mr. Grace was treated and released from Paul B Hall Medical Center on the same day of the incident.

Fire Chief John VanHoose and W.R. Castle Fire Department responded to the incident after a call for a brush fire according to Mr. VanHoose. Dennis contacted Mr. VanHoose, on 7/22/14, requesting a report concerning the response; however, Mr. VanHoose said they did not fill out a formal report on the incident. On 07/24/14, Dennis again spoke with Mr. VanHoose and was told they do have someone within their organization who does compile/complete reports which he just found out about. Mr. VanHoose stated they will send us a copy when the report is completed. Upon receipt of the report, we will forward an electronic copy to you.

July 24, 2014

Jeffrey C. Moore

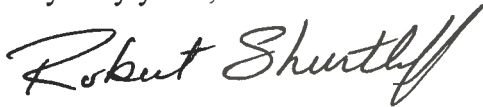
Page 2 -

Extensive research has been done to locate the last known meter at this location, and to date we have not been able to find when the meter was removed or the name of the occupant who was at the resident. Included in the documentation is a map of the pole as well as a copy of the cover sheet of the last two inspections along with a Google aerial photo of the area before it was cleaned off.

Dennis contacted Mr. Hammons on 7/22/14, asking if we could take a photograph of the weed eater since it was gone when Dennis arrived at the scene. Mr. Hammons told Dennis we could take a photograph of the weed eater; however, on 7/23/14 Dennis was told by Mr. Grace that we could not take the photograph.

Should you have any questions or need additional information, please feel free to contact me (606) 437-3180.

Very truly yours,



Robert S. Shurtleff
Customer & Distribution Services Manager

RSS:jrc
Enclosures

cc: Steve Kingsolver
Scott Morris
John Rogness



Overhead Circuit Results (Kind V)

Companies included: 110 Subareas included. 074,076,079
Completion Date between: 01/01/2014 and 12/31/2014
Default Sort : District, Subarea, Station, Circuit, WR

LINe ASSIGNED TO CLIFF FREEMAN
ROW ASSIGNED TO MARK JACKSON
03/24/14
Jon Hulett

Paintsville

52182892

Station 4090 - W.PAINTSV

Circuit 02 - STAFFORDSVILLE

Date Inspection Completed 3/5/2014

Row Nbr	Location Nbr (VR)	All Defcls Corr	CHK ARR	CHK Cut Out	CHK Down Guy	CHK Cross Arm	CHK TREE	CHK BUSH	CHK GRND	CHK Insul	CHK Oil Leak	CHK Pole	CHK Other	CHK Prim Wire Cd	CHK Wire Sec Cd	CHK Wire Serv Cd	Phase Count Value	Row Nbr	Location Description	Comments
1	38830782000018	N					1	1	1	1	1	1	1	1	1	1	3	#	RT 40 WEST	The following poles very old in poor condition needs replaced 782-18 16 11 12 and 34 with all the poles written up and circuit reconducted we would be able to line tie for better service in this area
2	388307820000147	N					1	1	1	1	1	1	1	1	1	1	3	#	RT 40 WEST TOWARD SALYERSVILLE	The following poles very old in poor condition needs replaced 782-147 146 144 143 and 142 most of these was damaged during ice storm in 2009
3	388307830000044	N					1	1	1	1	1	1	1	1	1	1	1	#	HURRICANE BRANCH PAINTSVILLE	The following pole up Hurricane Branch needs replaced very old in poor condition 783-35 36 37 40 44 51 52 53 55 57 58 59 60 and 61.pole 783-42 showed to be changed in 2008 but has not been changed map may be wrong
4	388307830000131	N					1	1	1	1	1	1	1	1	1	1	3	#	RT 40 TOWARD SALYERSVILLE	The following poles very old and in poor condition needs replaced 783-131 133 151 136 130 127 124 125 123 122 121 120 119 118 117 116 115 111 109 108 14 146 104 103 101 98 94 93 92 15 82 83 86and 87
5	38830784A000056	N					1	1	1	1	1	1	1	1	1	1	3	#	RT 40 EAST PAINTSVILLE	This is a three phasemain line pole in very poor condition leaning toward the creek has a temp.guy but needs replaced will cause a very large outage if not corrected truck accessible will need flaggers
6	38830785d10622	N					1	1	1	1	1	1	1	1	1	1	3	#	west paintsville > staffordsville circuit	This circuit in pretty good condition on the r-o-w however some spots of the three phase needs attention and several taps need to be cut
7	388387830000003	N					1	1	1	1	1	1	1	1	1	1	3	#	RT 40 WEST	Main line three phase pole in very poor condition needs replaced



Overhead Circuit Results (Kind V)



Companies included: 110 Subareas included 053,074,075,076,077,078,079
 Completion Date between: 01/01/2012 and 12/31/2012
 Default Sort: District, Subarea, Station, Circuit, WR

Paintsville

43220129

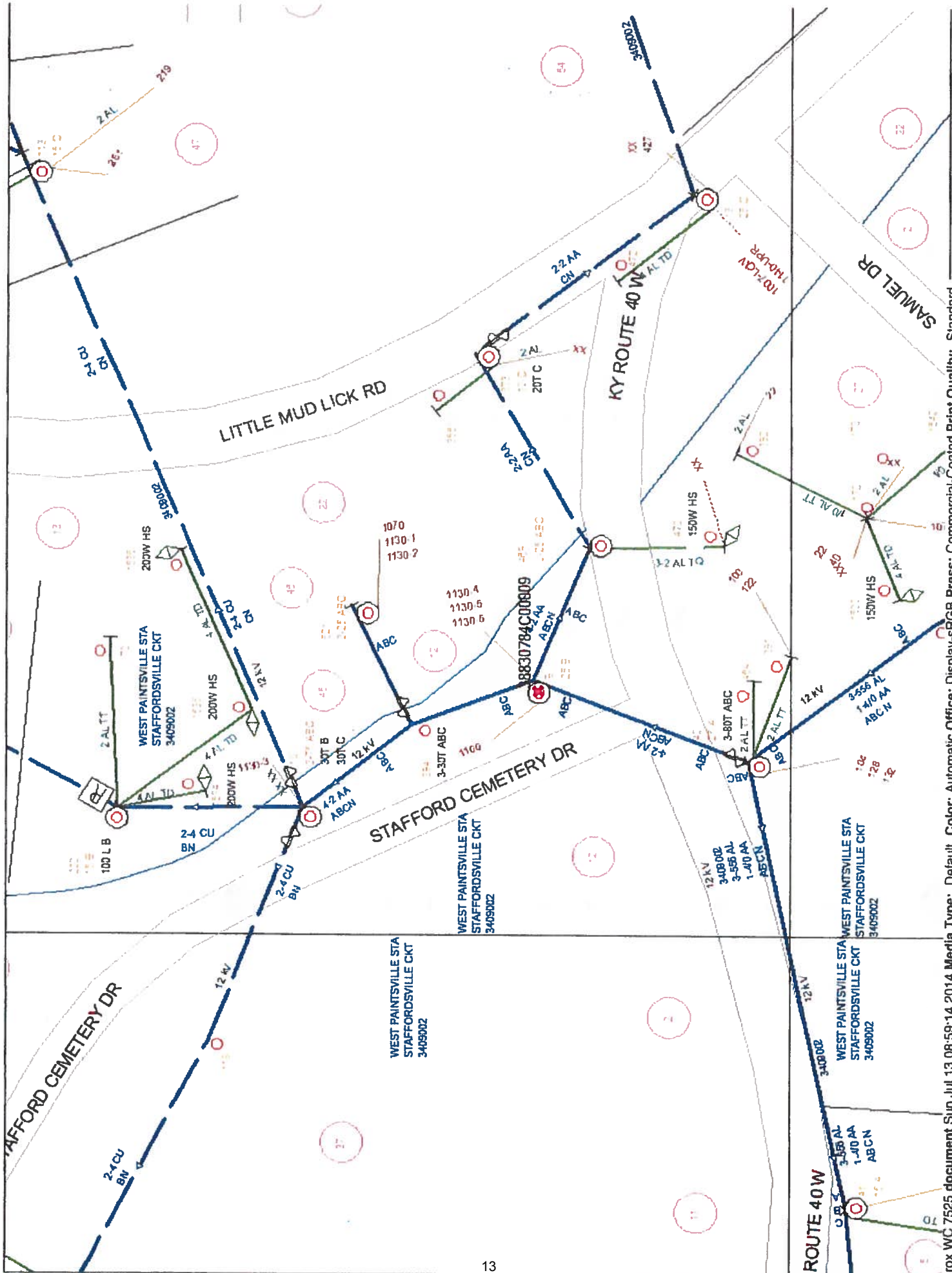
Station 4090 - W.PAINTSV

Circuit 02 - STAFFORDSVILLE

Date Inspection Completed 6/18/2012

Row Nbr	Location Nbr (VR)	All Defects Corr	CHK - ARR	CHK - Cut Out	CHK - Down Guy	CHK - Cross Arm	CHK - TREE	CHK - BUSH	CHK - GRIND	CHK - Insul	CHK - Oil Leak	CHK - Pole	CHK - Other	CHK - Prim Wire Cd	CHK - Wire Sec Cd	CHK - Wire Serv Cd	Phase Count Value	Location Description	Comments
1	38830782000018	N	1	1	1	1	1	1	1	1	1	1	1	1	1	1	1	# RT 40 WEST PAINTSVILLE	The following poles in poor condition need replaced all are single phase taps 782-16 11 12 and 34
2	38830782000147	N	1	1	1	1	1	1	1	1	1	1	1	1	1	1	3	# RT 40 WEST PAINTSVILLE	The following poles very old and in bad condition needs replaced all on three phase main line//782-147 146 144 143 and 142 old construction mostly damaged during ice storm
3	38830783000003	N	1	1	1	1	1	1	1	1	1	1	1	1	1	1	3	# RT 40 WEST PAINTSVILLE	Main line three phase pole in very poor condition needs replaced
4	38830783000044	N	1	1	1	1	1	1	1	1	1	1	1	1	1	1	1	Hurricane Branch	The following poles all up Hurricane Branch needs to be replaced// pole 783-42 shows to be changed out in 2008 this pole was not changed// poles 783-44 42 40 37 36 35 51 52 53 55 57 58 59 60 and 61
5	38830783000131	N	1	1	1	1	1	1	1	1	1	1	1	1	1	1	3	# RT 40 WEST PAINTSVILLE	The following poles are very old and in bad condition need replaced// 783-131 133 151 136 130 127 125 124 123 122 121 120 119 117 116 115 111 109 108 14 146 104 103 101 98 95 94 93 92 15 87 86 83 and 82
6	38830784A00056	N	1	1	1	1	1	1	1	1	1	1	1	1	1	1	3	# RT 40 WEST PAINTSVILLE	Main line three phase pole the pole and temp guy is sliding toward creek needs to be relocated pole leaning about 12 feet at top very close to trees will need flagging and outage to repair
7	38830785D10922	N	1	1	1	1	1	1	1	1	1	1	1	1	1	1	3	WEST PAINTSVILLE>STAFFORDSVILLE	Most of the R-O-W is in good condition however several taps need cut and spot cut on main line





Attachment B

Utility Notification

Morris, Scott A (PSC)

From: Moore, Jeffrey C (PSC)
Sent: Sunday, July 13, 2014 8:31 AM
To: Willard, Kyle (PSC); Rice, James D (PSC); Kingsolver, Steve (PSC); Morris, Scott A (PSC)
Subject: Possible Public Contact

Received a call from Kentucky Power dispatch on 7/12/14 at 8:00 PM about a possible contact. They had no information or details at that time, but would follow up with an e-mail after they investigate the site.
I called dispatch back this morning to follow up. They are preparing to send an e-mail with details on the incident. As soon as I receive the e-mail I will forward.

Sent via the Samsung Galaxy S™ III, an AT&T 4G LTE smartphone

Attachment C

Utility Incident Investigation Information

Morris, Scott A (PSC)

From: Moore, Jeffrey C (PSC)
Sent: Monday, July 14, 2014 7:23 AM
To: Willard, Kyle (PSC); Rice, James D (PSC)
Cc: Kingsolver, Steve (PSC); Morris, Scott A (PSC)
Subject: FW: Paintsville contact
Attachments: Emailing: contact 025.jpg, contact 026.jpg, contact 027.jpg, contact 028.jpg, contact 029.jpg, contact 030.jpg, contact 031.jpg, contact 032.jpg, contact 033.jpg, contact 034.jpg, contact 035.jpg, contact 036.jpg, contact 037.jpg, contact 038.jpg, contact; Sent from Snipping Tool; Sent from Snipping Tool

FYI,

This is the info we have at this time on the Kentucky Power incident that occurred on 7/12/2014. A seven-day report on the incident will follow.

Jeff

From: Dennis R Massey [<mailto:drmassey@aep.com>]
Sent: Sunday, July 13, 2014 10:35 AM
To: Debra A Lemaster; Phillip R Tolliver; Payton Wilson; Bob Shurtleff
Cc: Moore, Jeffrey C (PSC)
Subject: Paintsville contact

Contact info for July 12, 2014.

Outage Ticket # 4232481

Work Request # 54306944

Pole # 38830784C00009

Contact occurred at 16:00pm

Injured Jason Michal Grace (contact number 606-298-3860)

Property Owner Wilson Page

Witness name Jason Hammonds (contact number 606-534-1183)

Servicer called at 16:54pm arrived at 17:30pm (primary servicer was on rest so secondary servicer responded. Tommy Goble was the secondary servicer 606-793-1512)

Duty Supervisor called at 17:41pm arrived at 18:50pm (I was the duty supervisor Dennis Massey cell-phone number 606-794-6001)

W.R.Castle Fire Dept. responded (John Vanhoose Capt. Phone number 606-793-0689)

Jason Michal Grace was helping to clear property that was recently purchased by Wilson Page. Property location (Stafford Cemetery Road at the Mouth of Little Mud Lick). The injured was using a weed eater that had a blade to cut brush down, when he came in contact with a 2/3 service drop that lying on the ground. Injured had possible flash burns to hands and started feeling sick after contact was made. Injured did go to Paul B. Hall Medical Center for treatment. The servicer drop that he contacted showed to be approximately 47 feet and 6 inches in length. The service drop was covered in tall heavy brush, vines and tall weeds. When responder arrived at site, he was informed of this contact by Jason Hammonds (contact number 606-534-1183) who was helping the injured clear the property. The responder notified DDC and Robert Shurtleff about the contact. DDC and Robert Shurtleff contacted me to respond. Jason Hammonds returned to the site just before we was finished investigating, I asked him was they aware of or did they see the service drop lying on the ground. His reply was that the property was so grown up by the vegetation they did not see the service drop on the ground. He was going back by the medical center to check on the injured person.

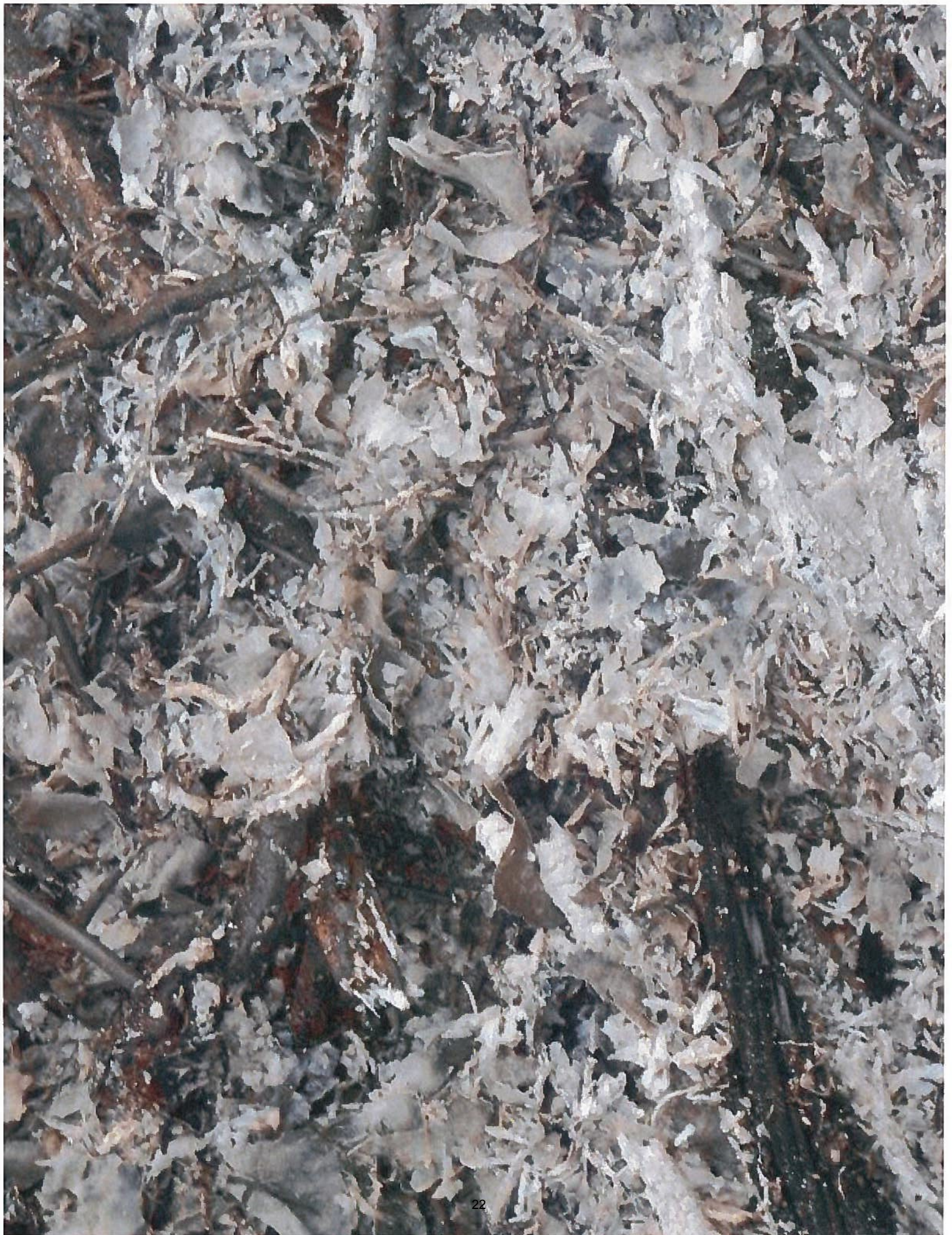
This property had been vacant for 10 to 15 years. Property is not easily seen from road way and access to property is hard to get to .

Pictures was taken at the site by Dennis R. Massey LCSNE Pikeville Dist.





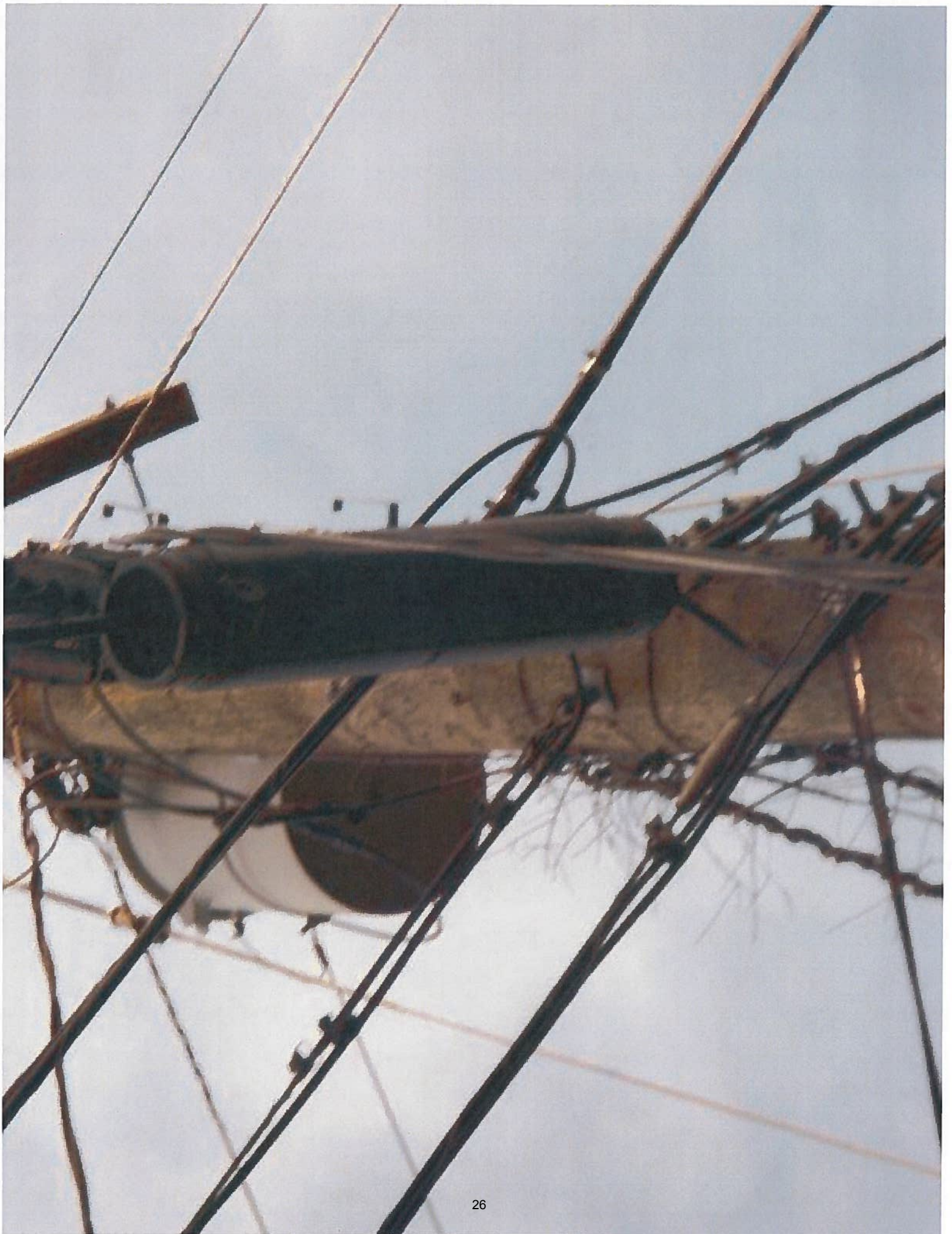




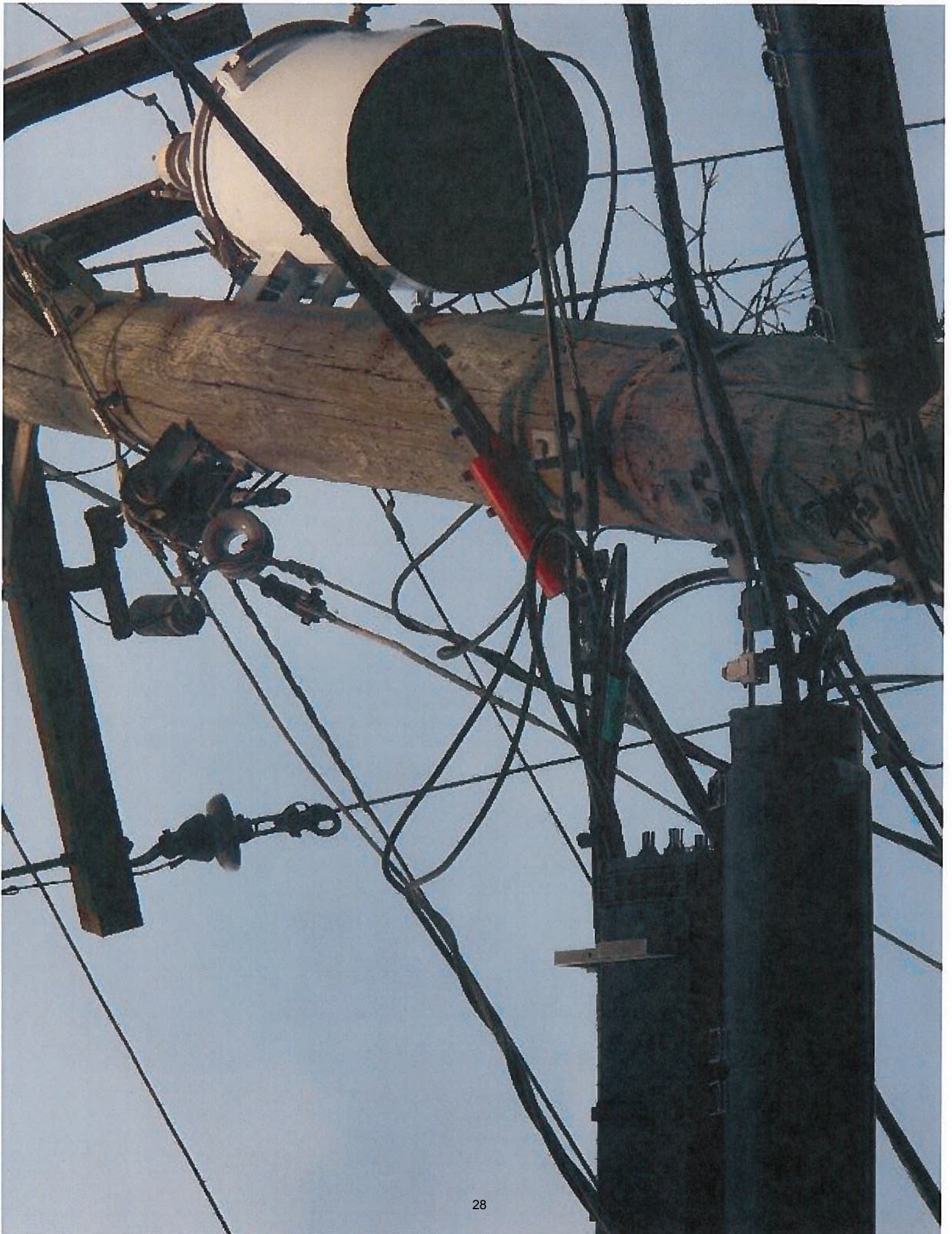






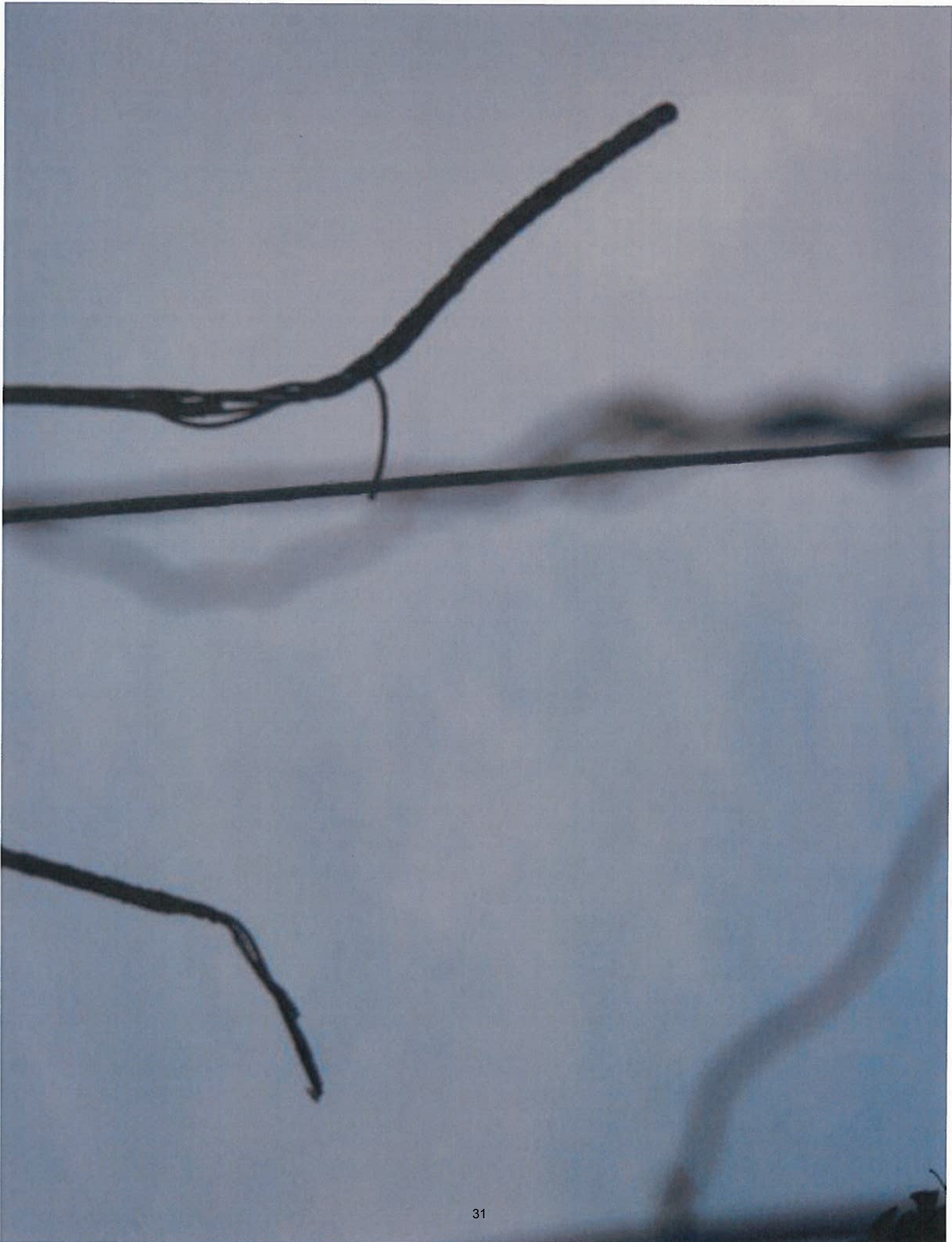
















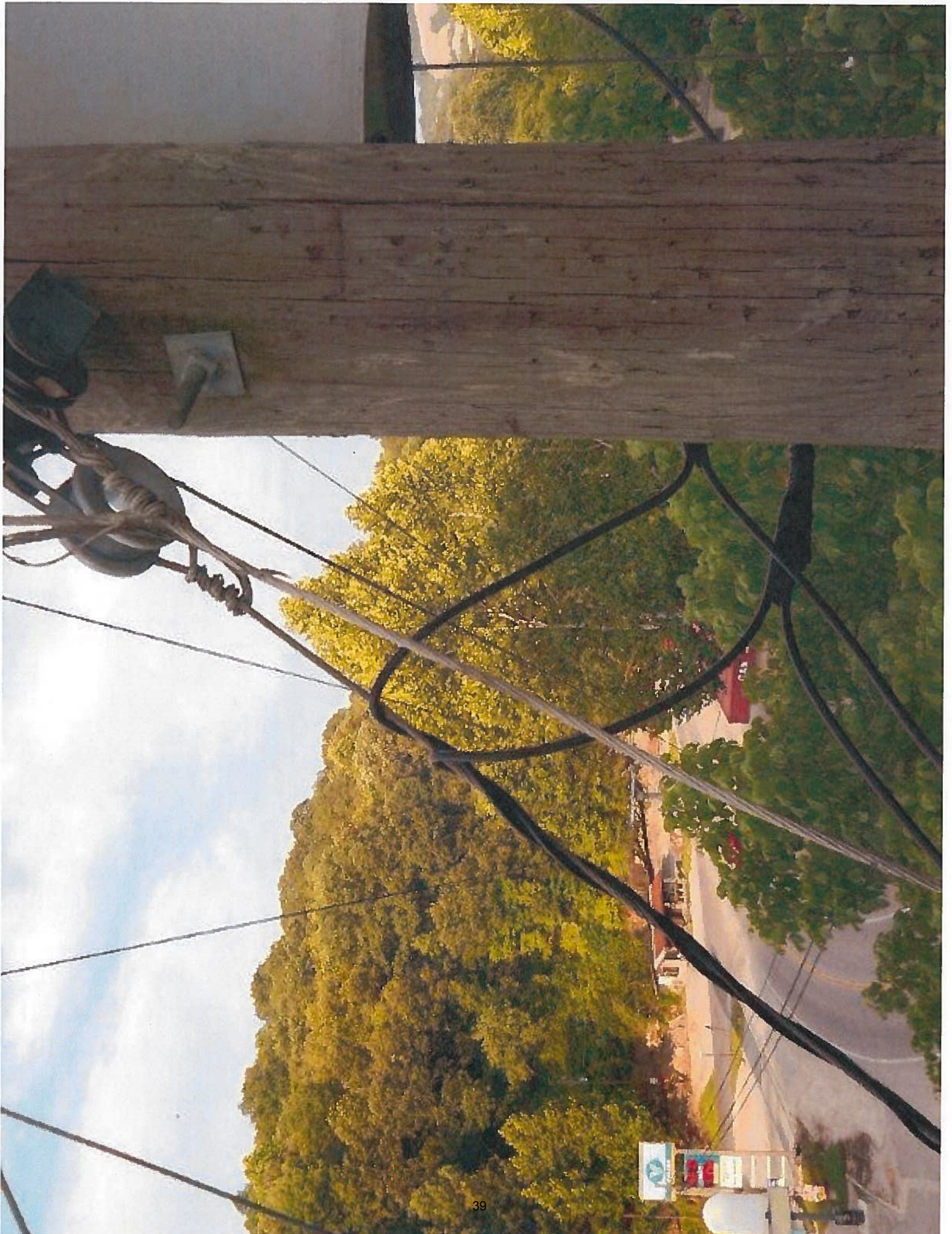






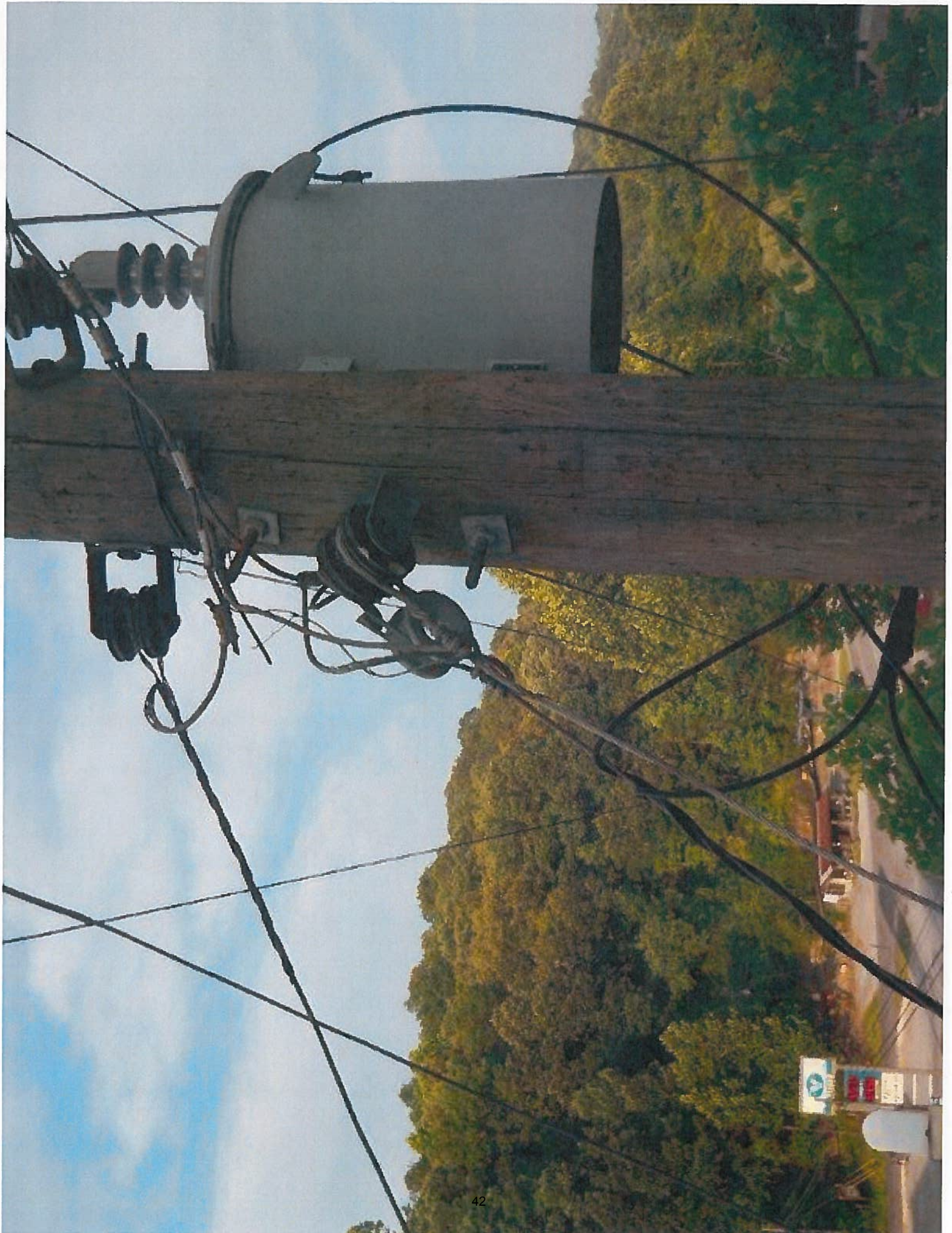












From: Dennis R Massey [mailto:drmassey@aep.com]

Sent: Sunday, July 13, 2014 10:35 AM

To: Debra A Lemaster; Phillip R Tolliver; Payton Wilson; Bob Shurtleff

Cc: Moore, Jeffrey C (PSC)

Subject: Paintsville contact

OUTAGE DETAILS

Total Outages: 1

1. Location 206 STAFFORD CEMETERY, STAFFORDSVILLE, KY

Outage Date Saturday, July 12, 2014 17:40

Est. Date

Stat/Circ 3409002 W.PAINTSVILLE STAFFORDSVILLE

Max Cust Out 4

Customer Mins 500

Major Cause Category DISTRIBUTION LINE

Cause OTHER

Device TRANSFORMER FUSE

Dispatched

arrived checking now!! ARCOSED DENNIS MASSEY OUT PER BOB SHURTLEFF @ 1741 TO INVESTIGATE POSSIBLE ELECTRICAL CONTACT// arrived checking now!! service was hanging off ground 7ft still hot , opened transformer fuse @ 17:40 contacted ddc and bob shurtleff about the contact arrived checking now!! service was hanging off ground 7ft still hot , opened transformer fuse @ 17:40 , contacted ddc and bob shurtleff about the contact of ./jason grace/(emailed information//

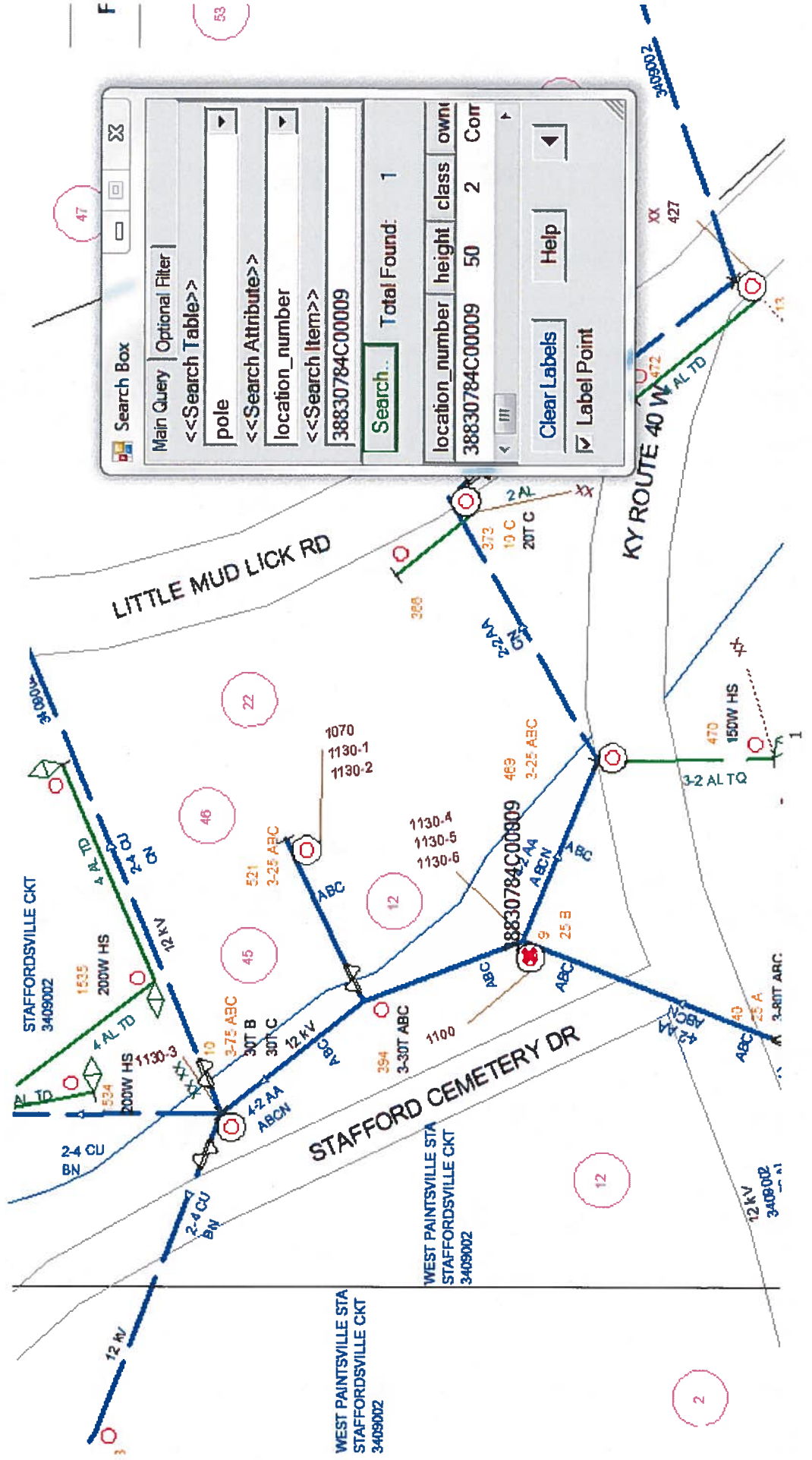
Step Date Customers Duration

1 7/12/2014 7:45:00 PM 4 125

Extent Transformer
Outage No 4232481
Restore Date Saturday, July 12, 2014 19:45
Crew Supv
Duration mins 125
Iso. Pole # 38830784C00259
Fault Pole 38830784c00009
Materials NONE

Morris, Scott A (PSC)

From: Dennis R Massey <drmassey@aep.com>
Sent: Sunday, July 13, 2014 9:21 AM
To: Dennis R Massey
Subject: Sent from Snipping Tool



Attachment D

Utility request for extension to file 7-day report



A unit of American Electric Power

Kentucky Power
3249 North Mayo Trail
Pikeville, KY 41501
KentuckyPower.com

Mr. Jeff Derouen
Executive Director
Commonwealth of Kentucky
Public Service Commission
P. O. Box 615
Frankfort, KY. 40602

RECEIVED

JUL 18 2014

PUBLIC SERVICE
COMMISSION

July 15, 2014

RE: 07/12/2014 Public Contact
Stafford Cemetery Road
Paintsville, KY

Dear Mr. Derouen:

In an effort to complete and submit a thorough investigation of the above styled incident, I am respectfully requesting a 7-day extension, until July 26, 2014, of our required (7) calendar days summary report of the utility related incident.

Should you have any questions or need additional information, please feel free to contact me at (606) 437-3180.

Sincerely yours,

Robert S Shurtleff
Customer & Distribution Services Manager
Pikeville District

RSS:jrc

cc: Jeff Moore
John Rogness

Attachment E

Utility procedures for distribution system inspections

**AEP — KENTUCKY
OVERHEAD/UNDERGROUND CIRCUIT FACILITIES INSPECTION
AND MAINTENANCE**

Objective: The objective of this program is to visually inspect all overhead and the external, above ground portions of underground facilities on a 2 year cycle to identify and correct deficiencies necessary for the safety of employees and the public under the conditions specified in the NESC and for system reliability.

Activities Included In Program for Overhead Facilities: The program consists of a visual inspection of poles (including foreign owned poles with company owned attachments), conductors, and pole-mounted equipment (transformer, regulators, reclosers, capacitors, etc.) and related materials (insulators, brackets, terminations, cutouts, surge arresters, etc.) owned by the company. It includes inspection of foreign attachments (CATV, telephone, etc.) to the company's poles for any safety related electrical or mechanical defects. Electrical and mechanical defects observed will be identified and the information will be collected so appropriate corrective action can be taken. Driving or foot patrol inspections are conducted as appropriate looking for obvious defects such as loose down guys, broken grounds, cracked insulators, lightning arresters with blown isolators, deteriorated crossarms having inadequate strength, etc.

Activities Included In Program for Underground Facilities: The program consists of an external, visual inspection of the above ground portion of underground systems including pad-mounted equipment (transformers, switches, primary metering enclosures, junction cabinets, etc.), pedestals and the underground associated components of primary riser poles. The program also includes the visual inspection of company owned outdoor lights and light poles fed from underground systems in URD developments and similar installations. The external inspection will be conducted to determine that the equipment is locked and secure and that there are no open appurtenances that might allow access to the interior of the equipment via soil erosion, cabinet or conduit deterioration or by other means such as vandalism. Oil filled equipment is also checked for any external leaks. Any defects observed that need attention will be identified and the information will be collected so appropriate corrective action can be taken.

Inspection/Collection

AEP personnel and contractors inspect and maintain overhead and underground facilities as a part of the 2 year cycle for the examination of distribution assets to identify defects and areas requiring attention. The Distribution Region and/or District/Areas identify the circuits to be included in the current year program based on inspection and operating history. Detail circuit maps are provided as needed by graphics personnel to be used for the inspection program which also allows for any field corrections to be documented for

follow up. A listing of items to be checked as a part of this inspection is on the attached page 3.

How The Program Fits Into Overall Operations and Maintenance Plans:

This program is designed to proactively identify defects involving company owned overhead and above ground portions of underground facilities so that appropriate action can be taken to reduce the possibility of an accident or correct a condition that would adversely affect system operation. The corrective actions taken are to include necessary maintenance and replacement as a part of this program. If defects should be discovered that pose a safety risk, then timely corrective action by qualified personnel is required. In rare instances the inspector may be required to guard the site of a safety hazard until qualified personnel arrive to correct the hazard. Defects involving foreign owned facilities are to be reported to the owner for correction. However, in some situations action may be required on the company's part to correct a safety hazard involving foreign owned facilities.

Maintenance

Maintenance activities are identified during the inspection process and in some cases are done in conjunction with the inspection. Some of these type activities would include the replacement of property ownership tags or structure location tags, tightening of pole down guys, replacement of lock(s) for underground equipment, etc. Otherwise, the local area office schedules follow up work as appropriate.

Records/Reporting

Circuit inspection results are maintained at the Region/District/Area office. This documentation includes what if any follow up action was required and when the follow up action was completed.

Kentucky PSC Inspections

In the interest of public safety, to limit our liability, and to comply with PSC requirements, a periodic and systematic inspection of all our facilities is necessary.

The following are the general guidelines for what to look for as a part of this inspection:

- * Condition of pole:
 - Rotten
 - Leaning or Washed out
 - Burned
 - Broken / split
 - Other

- * Condition of crossarm and crossarm braces
 - Broken / split
 - Other

- * Pole ground intact
 - Broken / missing ground wire molding
 - Loose connections

- * Hardware damaged
 - Lightning arrester
 - Cutout
 - Insulators

- * Guys and anchors
 - Loose
 - Damaged
 - Need insulator / breaker / marker

- * Transformers / Other Equipment
 - Unused
 - Overloaded
 - Leaking
 - Damaged

- * Conductors
 - Proper clearance
 - Unused
 - Damaged — broken strands
 - Excessive splices

- Loose tie wire

*Attachments

- Clearance issues

* Pole tags

- Damaged / missing

Report immediately any hazardous conditions that could endanger life or property, or cause an outage.

Attachment F

NESC 2012 Edition, page 98, Table 232-1

ft

Table 232-1— (continued)
Vertical clearance of wires, conductors, and cables above ground,
roadway, rail, or water surfaces

(Voltages are phase to ground for effectively grounded circuits and those other circuits where all ground faults are cleared by promptly de-energizing the faulted section, both initially and following subsequent breaker operations. See the definitions section for voltages of other systems.

See Rules 232A, 232B1, 232C1a, and 232D4.)

Nature of surface underneath wires, conductors, or cables	Insulated communication conductors and cable; messengers; overhead shield/surge-protection wires; grounded guys; ungrounded portions of guys meeting Rules 215C4, 215C5, and 279A1 exposed to 0 to 300 V [ⓐ] [ⓑ] [ⓒ] ; neutral conductors meeting Rule 230E1; supply cables meeting Rule 230C1 (m)	Noninsulated communication conductors; supply cables of 0 to 750 V meeting Rule 230C2 or 230C3 (ft)	Supply cables over 750 V meeting Rule 230C2 or 230C3; open supply conductors, 0 to 750 V [ⓐ] ; ungrounded portions of guys meeting Rules 215C4, 215C5, and 279A1 exposed to over 300 V to 750 V [ⓐ] [ⓑ] [ⓒ] (ft)	Open supply conductors, over 750 V to 22 kV; ungrounded portions of guys meeting Rules 215C4, 215C5, and 279A1 exposed to 750 V to 22 kV [ⓐ] [ⓑ] [ⓒ] (m)	Trolley and electrified railroad contact conductors and associated span or messenger wires [ⓓ]	
					0 to 750 V to ground (ft)	Over 750 V to 22 kV to ground (ft)
4. Other areas traversed by vehicles, such as cultivated, grazing, forest, and orchard lands, industrial sites, commercial sites, etc. [ⓐ]	15.5	16.0	16.5	18.5	—	—
5. Spaces and ways subject to pedestrians or restricted traffic only [ⓐ]	9.5	12.0 [ⓐ]	12.5 [ⓐ]	14.5	16.0	18.0
6. Water areas not suitable for sailboating or where sailboating is prohibited [ⓐ]	14.0	14.5	15.0	17.0	—	—
7. Water areas suitable for sailboating including lakes, ponds, reservoirs, tidal waters, rivers, streams, and canals with an unobstructed surface area of [ⓐ] [ⓑ] [ⓒ] [ⓓ] [ⓔ]						
a. Less than 20 acres	17.5	18.0	18.5	20.5	—	—
b. Over 20 to 200 acres	25.5	26.0	26.5	28.5	—	—
c. Over 200 to 2000 acres	31.5	32.0	32.5	34.5	—	—
d. Over 2000 acres	37.5	38.0	38.5	40.5	—	—

Attachment G

PSC Investigator's Photographs























*Kentucky Power Company
101 A Enterprise Drive
P. O. Box 5190
Frankfort, KY 40602

*Kentucky Power Company
Kentucky Power Company
101 A Enterprise Drive
P. O. Box 5190
Frankfort, KY 40602