

**Goss  
Samford**

ATTORNEYS AT LAW | PLLC

RECEIVED

**David S. Samford**

DEC 29 2016

david@gosssamfordlaw.com  
(859) 368-7740

PUBLIC SERVICE  
COMMISSION

December 29, 2016

**VIA HAND DELIVERY**

Ms. Talina Matthews, Ph.D.  
Executive Director  
Kentucky Public Service Commission  
211 Sower Boulevard  
Frankfort, Kentucky 40601

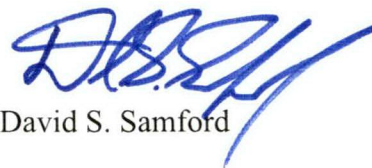
RE: *In the Matter of: Application of Farmers Rural Electric Cooperative Corporation for an Increase in Retail Rates - Case No. 2016-00365*

Dear Ms. Matthews:

Please find enclosed for filing with the Commission the original and ten copies of Farmers Rural Electric Cooperative Corporation's proof of publication of customer notice. Please return a file-stamped copy of this filing to my office.

Please let me know if you have any questions.

Sincerely,



David S. Samford

Enc.

AFFIDAVIT

This is to certify that the 10, 17, 24 day of November,  
2016 an ad for Farmers REC

was published in the regular edition of the Barren County  
Progress, a newspaper published for general  
circulation in the City of Glasgow, Cave City, Barren  
County and adjoining counties.

Pam Wright

COMMONWEALTH OF KENTUCKY

County of Hart

The foregoing was subscribed and sworn to before me by \_\_\_\_\_  
Pam Wright on this 24 day of November  
in 2016.

Leslie Logan  
Notary Public, Kentucky, State-At-Large

My commission expires: 02-09-19

# THE GLASSIFIEDS

## Official Notice

Farmers Rural Electric Cooperative Corporation, with its principal office at 504 South Broadway, Glasgow, KY 42141, intends to file with the Kentucky Public Service Commission in Case No. 2016-00365 an application to adjust its retail rates and charges. This adjustment will result in a general rate increase to the member-consumers of Farmers Rural Electric Cooperative Corporation. The proposed effective date of these new rates is December 15, 2016 and these rates are to be filed with the Commission on November 15, 2016.

The present and proposed rates for each Customer Classification are provided below:

	Rates				
	Present	Proposed			
<b>Schedule R - Residential Service</b>			<b>Schedule LPB-3 - Large Power</b>		
Customer Charge	\$ 9.35	\$14.00	Customer Charge	\$2,737.00	\$2,937.00
Energy Charge per kWh	\$ 0.088950	\$ 0.088950	Demand Charge per kW		
Pay as You Go (Prepay)			as per contract	\$7.17	\$7.77
Customer Charge	\$ 9.35	\$ 14.00	per kW in excess of contract	\$9.98	\$9.98
Incremental Charge	\$ 3.18	\$ 3.18	Energy Charge per kWh	\$ 0.054382	\$ 0.054382
<b>Schedule R - Residential Time-of-Day Rate</b>			<b>Schedule LPB-4 - Large Power</b>		
Customer Charge	\$15.00	\$19.65	Customer Charge	\$3,015.00	\$3,215.00
On-peak Energy per kWh	\$0.10473	\$0.10473	Demand Charge per kW		
Off-peak Energy per kWh	\$0.06000	\$0.06000	as per contract	\$7.17	\$7.77
<b>Schedule OL - Outdoor Lighting Service Rate</b>			per kW in excess of contract	\$9.98	\$9.98
175 W MV	\$9.18	\$9.73	Energy Charge per kWh	\$ 0.051882	\$ 0.051882
175 W, shared MV	\$3.27	\$3.47	<b>Schedule LPB-5 - Large Power</b>		
250 W MV	\$10.53	\$11.16	Customer Charge	\$4,301.00	\$4,501.00
400 W MV	\$16.01	\$16.97	Demand Charge per kW		
1000 W MV	\$28.44	\$30.15	as per contract	\$7.17	\$7.77
100 W SV	\$9.47	\$10.04	per kW in excess of contract	\$9.98	\$9.98
150 W SV	\$11.06	\$11.72	Energy Charge per kWh	\$ 0.049382	\$ 0.049382
250 W SV	\$15.06	\$15.96	<b>Schedule LPE-1 Large Power Time of Day Rate Tariff</b>		
400 W SV	\$19.44	\$20.61	Customer Charge	\$816.00	\$1,016.00
1000 W SV	\$42.17	\$44.70	Demand Charge per kW	\$6.02	\$6.62
LED Lighting	\$9.34	\$9.90	Energy Charge per kWh		
<b>Schedule C - Comm. &amp; Indust. Service Rate &lt; 50 kW</b>			On-Peak Energy	\$0.068279	\$0.068279
Customer Charge	\$11.42	\$21.32	Off-Peak Energy	\$0.059554	\$0.059554
Energy Charge	\$0.08424	\$0.08424	<b>Schedule LPE-2 Large Power Time of Day Rate Tariff</b>		
<b>Schedule C - Comm. &amp; Indust. Service Rate &gt; 50 kW</b>			Customer Charge	\$1,088.00	\$1,288.00
Customer Charge	\$51.93	\$105.00	Demand Charge per kW	\$6.02	\$6.62
Demand Charge per kW	\$7.17	\$7.80	Energy Charge per kWh		
			On-Peak Energy	\$0.066279	\$0.066279
			Off-Peak Energy	\$0.057554	\$0.057554
			<b>Schedule LPE-3 Large Power Time of Day Rate Tariff</b>		
			Customer Charge	\$2,737.00	\$2,937.00
			Demand Charge per kW		
			as per contract	\$7.17	\$7.77
			per kW in excess of contract	\$9.98	\$9.98
			Energy Charge per kWh	\$ 0.054382	\$ 0.054382

Single Phase Service	\$19.75	\$21.32
Three Phase Service	\$60.26	\$105.00
Energy Charge		
On-Peak per kWh	\$0.11814	\$0.11814
Off-Peak per kWh	\$0.06000	\$0.06000
<b>Schedule D - Large Comm/Ind Opt Time of Day Rate</b>		
Customer Charge	\$51.93	\$105.00
Demand Charge per kW	\$7.12	\$7.89
Energy Charge per kWh	\$0.06513	\$0.06513
<b>Schedule E - Large Industrial Rate</b>		
Customer Charge	\$1,142.46	\$1,142.46
Demand Charge per kW	\$7.12	\$7.89
Energy Charge kWh	\$0.05163	\$0.05163
<b>Schedule SL - Street Lighting</b>		
Fluorescent 40 Watt, 16 kWh	\$0.05574	\$0.05908
175 W MV, 7,650 L, 70 kWh	\$0.05574	\$0.05908
250 W MV, 10,400 L, 98 kWh	\$0.05574	\$0.05908
400 W MV, 19,100 L, 156 kWh	\$0.05574	\$0.05908
100 W HPS, 8,550 L, 42 kWh	\$0.05574	\$0.05908
150 W HPS, 63 kWh	\$0.05574	\$0.05908
250 W HPS, 29,000 L, 105 kWh	\$0.05574	\$0.05908
400 W HPS, 45,000 L, 165 kWh	\$0.05574	\$0.05908
1,000 W HPS, 126,000 L, 385 kWh	\$0.05574	\$0.05908
Metal Halide 175 Watt, 70 kWh	\$0.05574	\$0.05908
<b>Schedule LPC-1 - Large Power</b>		
Customer Charge	\$816.00	\$1,016.00
Demand Charge per kW	\$7.17	\$7.77
Energy Charge per kWh	\$0.057882	\$0.057882
<b>Schedule LPC-2 - Large Power</b>		
Customer Charge	\$1,088.00	\$1,288.00
Demand Charge per kW	\$7.17	\$7.77
Energy Charge per kWh	\$0.055882	\$0.055882
<b>Schedule LPC-3 - Large Power</b>		
Customer Charge	\$2,737.00	\$2,937.00
Demand Charge	\$7.17	\$7.77
Energy Charge	\$0.054382	\$0.054382
<b>Schedule LPC-4 - Large Power</b>		
Customer Charge	\$3,015.00	\$3,215.00
Demand Charge per kW	\$7.17	\$7.77
Energy Charge per kWh	\$0.051882	\$0.051882
<b>Schedule LPC-5 - Large Power</b>		
Customer Charge	\$4,301.00	\$4,501.00
Demand Charge per kW	\$7.17	\$7.77
Energy Charge per kWh	\$0.049382	\$0.049382
<b>Schedule LPB-1 - Large Power</b>		
Customer Charge	\$816.00	\$1,016.00
Demand Charge per kW	\$7.17	\$7.77
as per contract	\$7.17	\$7.77
per kW in excess of contract	\$9.98	\$9.98
Energy Charge per kWh	\$0.057882	\$0.057882
<b>Schedule LPB-2 - Large Power</b>		
Customer Charge	\$1,088.00	\$1,288.00
Demand Charge per kW	\$7.17	\$7.77
as per contract	\$7.17	\$7.77
per kW in excess of contract	\$9.98	\$9.98
Energy Charge per kWh	\$0.055882	\$0.055882

On-Peak Energy	\$0.004117	\$0.004117
Off-Peak Energy	\$0.056054	\$0.056054
<b>Schedule LPE-4 Large Power Time of Day Rate Tariff</b>		
Customer Charge	\$3,015.00	\$3,215.00
Demand Charge per kW	\$6.02	\$6.62
Energy Charge per kWh		
On-Peak Energy	\$0.062279	\$0.062279
Off-Peak Energy	\$0.053554	\$0.053554
<b>Schedule LPB-5 Large Power Time of Day Rate Tariff</b>		
Customer Charge	\$4,301.00	\$4,501.00
Demand Charge per kW	\$6.02	\$6.62
Energy Charge per kWh		
On-Peak Energy	\$0.059779	\$0.059779
Off-Peak Energy	\$0.051054	\$0.051054
<b>Rate Schedule NM - Net Metering</b>		
Customer Charge		
NM and NM no fuel surcharge	\$9.35	\$14.00
Energy Charge per kWh (purchased)	\$0.08895	\$0.08895
<b>Schedule RM - Residential Off-Peak Marketing - ETS</b>		
Energy Charge per kWh	\$0.05337	\$0.06000
<b>Schedule CM - Small Commercial Off-Peak Marketing - ETS</b>		
Energy Charge	\$0.05054	\$0.06000

The amount of the change requested in dollar amounts and percentage change for each customer classification is presented below:

	Increase	
	Dollar	Percent
Schedule R - Residential Service	1,275,978.60	4.4%
Schedule OL - Outdoor Lighting Service Rate	53,304.50	6.0%
Schedule C - Comm. & Indust. Service Rate < 50 kW	209,206.80	7.7%
Schedule C - Comm. & Indust. Service Rate > 50 kW	215,802.53	3.5%
Schedule C - Time-of-Day Commercial Service	2,147.52	4.6%
Schedule D - Large Comm/Ind Opt Time of Day Rate	7,157.04	7.7%
Schedule E - Large Industrial Rate	71,617.39	1.9%
Schedule SL - Street Lighting	1,724.20	2.8%
Schedule LPC-2 - Large Power	9,661.68	2.1%
Schedule LPE-4 Large Power Time of Day Rate Tariff	40,905.30	2.0%
Schedule RM - Residential Off-Peak Marketing - ETS	5,482.57	12.4%
Schedule CM - Small Commercial Off-Peak Marketing - ETS	35.53	18.7%
Rate Schedule NM - Net Metering	781.20	8.1%
<b>Total</b>	<b>1,893,804.86</b>	<b>4.1%</b>

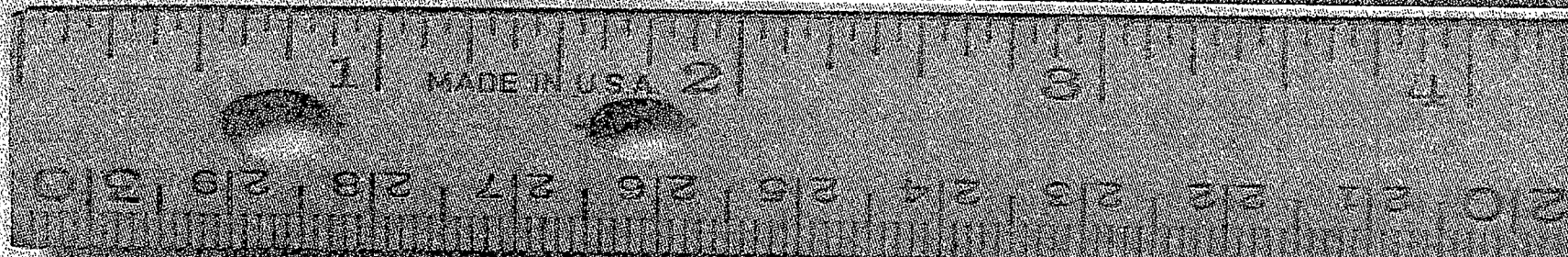
The amount of the average usage and the effect upon the average bill for each customer classification is provided below:

	Average Usage - kWh	Increase	
		Dollar	Percent
Schedule R - Residential Service	1,092	\$4.65	4.4%
Schedule OL - Outdoor Lighting Service Rate	68	\$0.57	6.0%
Schedule C - Comm. & Indust. Service Rate < 50 kW	1,399	\$9.90	7.7%
Schedule C - Comm. & Indust. Service Rate > 50 kW	68,081	\$199.50	3.4%
Schedule C - Time-of-Day Commercial Service	9,919	\$44.74	4.6%
Schedule D - Large Comm/Ind Opt Time of Day Rate	15,400	\$149.11	7.7%
Schedule E - Large Industrial Rate	5,167,200	\$5,968.12	1.8%
Schedule SL - Street Lighting	5,784	\$20.53	2.8%
Schedule LPC-2 - Large Power	530,300	\$805.14	2.1%
Schedule LPE-4 Large Power Time of Day Rate Tariff	2,428,971	\$3,408.77	1.9%
Schedule RM - Residential Off-Peak Marketing - ETS	377	\$2.50	12.4%
Schedule CM - Small Commercial Off-Peak Marketing - ETS	313	\$2.96	18.7%
Rate Schedule NM - Net Metering	556	\$4.65	7.9%

A person may examine this application at the offices of Farmers Rural Electric located at 504 South Broadway, Glasgow, KY 42141. A person may also examine the application at the Public Service Commission's offices located at 211 Sower Boulevard, Frankfort, KY, Monday through Friday 8:00 a.m. to 4:30 p.m., or through the Public Service Commission's website at <http://psc.ky.gov>. Comments regarding this application may be submitted to the Public Service Commission through its website or by mail to the Public Service Commission, Post Office Box 615, Frankfort, KY 40602.

The rates proposed in this application are the rates proposed by Farmers Rural Electric Cooperative Corp. However, the Public Service Commission may order rates to be charged that differ from these proposed rates. Such action may result in rates for consumers other than the rates in this application.

A person may submit a timely written request for intervention to the Public Service Commission, Post Office Box 615, Frankfort, KY 40602, establishing the grounds for the request including the status and interest of the party. If the Commission does not receive a written request for intervention within thirty (30) days of initial publication or mailing of the notice, the Commission may take final action on the application.



**The Classifieds...**  
measuring up to your expectations one ad at a time.

BARREN COUNTY  
**THE PROGRESS**

For information  
or rates  
call 659-2146

AFFIDAVIT

This is to certify that the 10, 17, 24 day of November,  
2016 an ad for Farmers RECC

was published in the regular edition of the Hart County  
News Herald, a newspaper published for general  
circulation in the City of Horse Cave, Hart  
County and adjoining counties.

Sam Wright

COMMONWEALTH OF KENTUCKY

County of Hart

The foregoing was subscribed and sworn to before me by \_\_\_\_\_

Sam Wright on this 24 day of November  
in 2016.

Leslie Logson  
Notary Public, Kentucky, State-At-Large

My commission expires: 02-09-19

# THE GLASSIFIEDS

## Official Notice

Farmers Rural Electric Cooperative Corporation, with its principal office at 504 South Broadway, Glasgow, KY 42141, intends to file with the Kentucky Public Service Commission in Case No. 2016-00365 an application to adjust its retail rates and charges. This adjustment will result in a general rate increase to the member-consumers of Farmers Rural Electric Cooperative Corporation. The proposed effective date of these new rates is December 15, 2016 and these rates are to be filed with the Commission on November 15, 2016.

The present and proposed rates for each Customer Classification are provided below:

	Rates				
	Present	Proposed			
<b>Schedule R - Residential Service</b>					
Customer Charge	\$ 9.35	\$14.00			
Energy Charge per kWh	\$ 0.088950	\$ 0.088950			
Pay as You Go (Prepay)					
Customer Charge	\$ 9.35	\$ 14.00			
Incremental Charge	\$ 3.18	\$ 3.18			
<b>Schedule R - Residential Time-of-Day Rate</b>					
Customer Charge	\$ 15.00	\$ 19.65			
On-peak Energy per kWh	\$ 0.10473	\$ 0.10473			
Off-peak Energy per kWh	\$ 0.06000	\$ 0.06000			
<b>Schedule OL - Outdoor Lighting Service Rate</b>					
175 W MV	\$ 9.18	\$ 9.73			
175 W, shared MV	\$ 3.27	\$ 3.47			
250 W MV	\$ 10.53	\$ 11.16			
400 W MV	\$ 16.01	\$ 16.97			
1000 W MV	\$ 28.44	\$ 30.15			
100 W SV	\$ 9.47	\$ 10.04			
150 W SV	\$ 11.06	\$ 11.72			
250 W SV	\$ 15.06	\$ 15.96			
400 W SV	\$ 19.44	\$ 20.61			
1000 W SV	\$ 42.17	\$ 44.70			
LED Lighting	\$ 9.34	\$ 9.90			
<b>Schedule C - Comm. &amp; Indust. Service Rate &lt; 50 kW</b>					
Customer Charge	\$ 11.42	\$ 21.32			
Energy Charge	\$ 0.08424	\$ 0.08424			
<b>Schedule C - Comm. &amp; Indust. Service Rate &gt; 50 kW</b>					
Customer Charge	\$ 51.93	\$ 105.00			
			<b>Schedule LPB-3 - Large Power</b>		
			Customer Charge	\$ 2,737.00	\$ 2,937.00
			Demand Charge per kW		
			as per contract	\$ 7.17	\$ 7.77
			per kW in excess of contract	\$ 9.98	\$ 9.98
			Energy Charge per kWh	\$ 0.054382	\$ 0.054382
			<b>Schedule LPB-4 - Large Power</b>		
			Customer Charge	\$ 3,015.00	\$ 3,215.00
			Demand Charge per kW		
			as per contract	\$ 7.17	\$ 7.77
			per kW in excess of contract	\$ 9.98	\$ 9.98
			Energy Charge per kWh	\$ 0.051882	\$ 0.051882
			<b>Schedule LPB-5 - Large Power</b>		
			Customer Charge	\$ 4,301.00	\$ 4,501.00
			Demand Charge per kW		
			as per contract	\$ 7.17	\$ 7.77
			per kW in excess of contract	\$ 9.98	\$ 9.98
			Energy Charge per kWh	\$ 0.049382	\$ 0.049382
			<b>Schedule LPE-1 Large Power Time of Day Rate Tariff</b>		
			Customer Charge	\$ 816.00	\$ 1,016.00
			Demand Charge per kW	\$ 6.02	\$ 6.62
			Energy Charge per kWh		
			On-Peak Energy	\$ 0.068279	\$ 0.068279
			Off-Peak Energy	\$ 0.059554	\$ 0.059554
			<b>Schedule LPE-2 Large Power Time of Day Rate Tariff</b>		
			Customer Charge	\$ 1,088.00	\$ 1,288.00
			Demand Charge per kW	\$ 6.02	\$ 6.62
			Energy Charge per kWh		
			On-Peak Energy	\$ 0.066279	\$ 0.066279
			Off-Peak Energy	\$ 0.057554	\$ 0.057554
			<b>Schedule LPE-3 Large Power Time of Day Rate Tariff</b>		

Single Phase Service	\$ 19.75	\$ 21.32
Three Phase Service	\$ 60.26	\$ 105.00
Energy Charge		
On-Peak per kWh	\$ 0.11814	\$ 0.11814
Off-Peak per kWh	\$ 0.06000	\$ 0.06000
<b>Schedule D - Large Comm/Ind Opt Time of Day Rate</b>		
Customer Charge	\$ 51.93	\$ 105.00
Demand Charge per kW	\$ 7.12	\$ 7.89
Energy Charge per kWh	\$ 0.06513	\$ 0.06513
<b>Schedule E - Large Industrial Rate</b>		
Customer Charge	\$ 1,142.46	\$ 1,142.46
Demand Charge per kW	\$ 7.12	\$ 7.89
Energy Charge kWh	\$ 0.05163	\$ 0.05163
<b>Schedule SL - Street Lighting</b>		
Fluorescent 40 Watt, 16 kWh	\$ 0.05574	\$ 0.05908
175 W MV, 7,650 L, 70 kWh	\$ 0.05574	\$ 0.05908
250 W MV, 10,400 L, 98 kWh	\$ 0.05574	\$ 0.05908
400 W MV, 19,100 L, 156 kWh	\$ 0.05574	\$ 0.05908
100 W HPS, 8,550 L, 42 kWh	\$ 0.05574	\$ 0.05908
150 W HPS, 63 kWh	\$ 0.05574	\$ 0.05908
250 W HPS, 23,000 L, 105 kWh	\$ 0.05574	\$ 0.05908
400 W HPS, 45,000 L, 165 kWh	\$ 0.05574	\$ 0.05908
1,000 W HPS, 126,000 L, 385 kWh	\$ 0.05574	\$ 0.05908
Metal Halide 175 Watt, 70 kWh	\$ 0.05574	\$ 0.05908
<b>Schedule LPC-1 - Large Power</b>		
Customer Charge	\$ 816.00	\$ 1,016.00
Demand Charge per kW	\$ 7.17	\$ 7.77
Energy Charge per kWh	\$ 0.057882	\$ 0.057882
<b>Schedule LPC-2 - Large Power</b>		
Customer Charge	\$ 1,088.00	\$ 1,288.00
Demand Charge per kW	\$ 7.17	\$ 7.77
Energy Charge per kWh	\$ 0.055882	\$ 0.055882
<b>Schedule LPC-3 - Large Power</b>		
Customer Charge	\$ 2,737.00	\$ 2,937.00
Demand Charge	\$ 7.17	\$ 7.77
Energy Charge	\$ 0.054382	\$ 0.054382
<b>Schedule LPC-4 - Large Power</b>		
Customer Charge	\$ 3,015.00	\$ 3,215.00
Demand Charge per kW	\$ 7.17	\$ 7.77
Energy Charge per kWh	\$ 0.051882	\$ 0.051882
<b>Schedule LPC-5 - Large Power</b>		
Customer Charge	\$ 4,301.00	\$ 4,501.00
Demand Charge per kW	\$ 7.17	\$ 7.77
Energy Charge per kWh	\$ 0.049382	\$ 0.049382
<b>Schedule LPB-1 - Large Power</b>		
Customer Charge	\$ 816.00	\$ 1,016.00
Demand Charge per kW		
as per contract	\$ 7.17	\$ 7.77
per kW in excess of contract	\$ 9.98	\$ 9.98
Energy Charge per kWh	\$ 0.057882	\$ 0.057882
<b>Schedule LPB-2 - Large Power</b>		
Customer Charge	\$ 1,088.00	\$ 1,288.00
Demand Charge per kW		
as per contract	\$ 7.17	\$ 7.77
per kW in excess of contract	\$ 9.98	\$ 9.98
Energy Charge per kWh	\$ 0.055882	\$ 0.055882

Off-Peak Energy	\$ 0.056054	\$ 0.056054
<b>Schedule LPE-4 Large Power Time of Day Rate Tariff</b>		
Customer Charge	\$ 3,015.00	\$ 3,215.00
Demand Charge per kW	\$ 6.02	\$ 6.62
Energy Charge per kWh		
On-Peak Energy	\$ 0.062279	\$ 0.062279
Off-Peak Energy	\$ 0.053554	\$ 0.053554
<b>Schedule LPE-5 Large Power Time of Day Rate Tariff</b>		
Customer Charge	\$ 4,301.00	\$ 4,501.00
Demand Charge per kW	\$ 6.02	\$ 6.62
Energy Charge per kWh		
On-Peak Energy	\$ 0.059779	\$ 0.059779
Off-Peak Energy	\$ 0.051054	\$ 0.051054
Rate Schedule NM - Net Metering		
Customer Charge		
NM and NM no fuel surcharge	\$ 9.35	\$ 14.00
Energy Charge per kWh (purchased)	\$ 0.08895	\$ 0.08895
<b>Schedule RM - Residential Off-Peak Marketing - ETS</b>		
Energy Charge per kWh	\$ 0.05337	\$ 0.06000
<b>Schedule CM - Small Commercial Off-Peak Marketing - ETS</b>		
Energy Charge	\$ 0.05054	\$ 0.06000

The amount of the change requested in dollar amounts and percentage change for each customer classification is presented below:

	Increase	
	Dollar	Percent
Schedule R - Residential Service	1,275,978.60	4.4%
Schedule OL - Outdoor Lighting Service Rate	53,304.50	6.0%
Schedule C - Comm. & Indust. Service Rate < 50 kW	209,206.80	7.7%
Schedule C - Comm. & Indust. Service Rate > 50 kW	215,802.53	3.5%
Schedule C - Time-of-Day Commercial Service	2,147.52	4.6%
Schedule D - Large Comm/Ind Opt Time of Day Rate	7,157.04	7.7%
Schedule E - Large Industrial Rate	71,617.39	1.9%
Schedule SL - Street Lighting	1,724.20	2.8%
Schedule LPC-2 - Large Power	9,661.68	2.1%
Schedule LPE-4 Large Power Time of Day Rate Tariff	40,905.30	2.0%
Schedule RM - Residential Off-Peak Marketing - ETS	5,482.57	12.4%
Schedule CM - Small Commercial Off-Peak Marketing - ETS	35.53	18.7%
Rate Schedule NM - Net Metering	781.20	8.1%
Total	1,893,804.86	4.1%

The amount of the average usage and the effect upon the average bill for each customer classification is provided below:

	Average Usage - kWh	Increase	
		Dollar	Percent
Schedule R - Residential Service	1,092	\$ 4.65	4.4%
Schedule OL - Outdoor Lighting Service Rate	68	\$ 0.57	6.0%
Schedule C - Comm. & Indust. Service Rate < 50 kW	1,399	\$ 9.90	7.7%
Schedule C - Comm. & Indust. Service Rate > 50 kW	68,081	\$ 199.50	3.4%
Schedule C - Time-of-Day Commercial Service	9,919	\$ 44.74	4.6%
Schedule D - Large Comm/Ind Opt Time of Day Rate	15,400	\$ 149.11	7.7%
Schedule E - Large Industrial Rate	5,167,200	\$ 5,968.12	1.8%
Schedule SL - Street Lighting	5,784	\$ 20.53	2.8%
Schedule LPC-2 - Large Power	530,300	\$ 805.14	2.1%
Schedule LPE-4 Large Power Time of Day Rate Tariff	2,428,971	\$ 3,408.77	1.9%
Schedule RM - Residential Off-Peak Marketing - ETS	377	\$ 2.50	12.4%
Schedule CM - Small Commercial Off-Peak Marketing - ETS	313	\$ 2.96	18.7%
Rate Schedule NM - Net Metering	556	\$ 4.65	7.9%

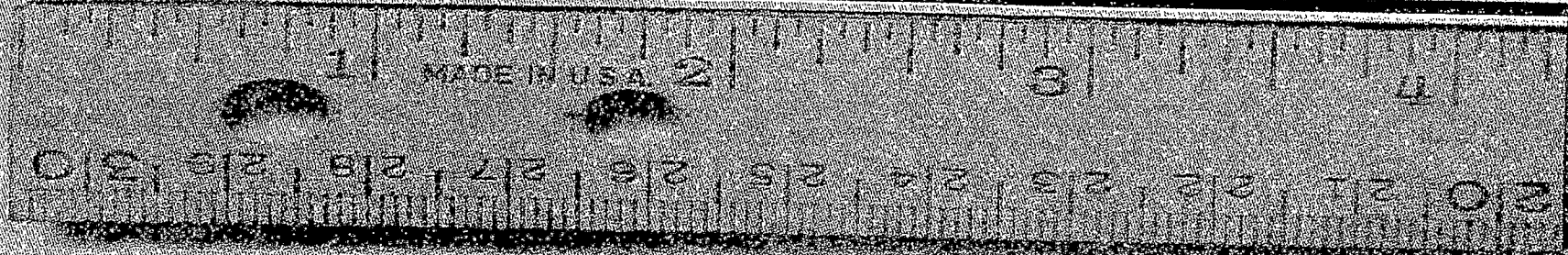
A person may examine this application at the offices of Farmers Rural Electric located at 504 South Broadway, Glasgow, KY 42141. A person may also examine the application at the Public Service Commission's offices located at 211 Sower Boulevard, Frankfort, KY, Monday through Friday 8:00 a.m. to 4:30 p.m., or through the Public Service Commission's website at <http://psc.ky.gov>.

Comments regarding this application may be submitted to the Public Service Commission through its website or by mail to the Public Service Commission, Post Office Box 615, Frankfort, KY 40602.



from these proposed rates. Such action may result in rates for consumers other than the rates in this application.

A person may submit a timely written request for intervention to the Public Service Commission, Post Office Box 615, Frankfort, KY 40602, establishing the grounds for the request including the status and interest of the party. If the Commission does not receive a written request for intervention within thirty (30) days of initial publication or mailing of the notice, the Commission may take final action on the application.



**The Classifieds...**  
**measuring up to your expectations one ad at a time.**

HART COUNTY'S NEWSPAPER  
**NEWS-HERALD**

**For information  
or rates  
call 786-2676**

AFFIDAVIT

This is to certify that the 9, 14, 23 day of November,  
\_\_\_\_\_ an ad for Farmers Recd

\_\_\_\_\_ was published in the regular edition of the Edmonton Herald  
News, a newspaper published for general  
circulation in the City of Edmonton, Mitcalfe  
County and adjoining counties.

Sam Wright

COMMONWEALTH OF KENTUCKY

County of Hart

The foregoing was subscribed and sworn to before me by \_\_\_\_\_  
Sam Wright on this 23 day of November  
\_\_\_\_\_ in 2014.

Leslie Logsdon  
Notary Public, Kentucky, State-At-Large  
My commission expires: 02-09-19

# THE HERALD CLASSIFIEDS

## Official Notice

Farmers Rural Electric Cooperative Corporation, with its principal office at 504 South Broadway, Glasgow, KY 42141, intends to file with the Kentucky Public Service Commission in Case No. 2016-00365 an application to adjust its retail rates and charges. This adjustment will result in a general rate increase to the member-consumers of Farmers Rural Electric Cooperative Corporation. The proposed effective date of these new rates is December 15, 2016 and these rates are to be filed with the Commission on November 15, 2016.

The present and proposed rates for each Customer Classification are provided below:

	Rates			
	Present	Proposed		
<b>Schedule R - Residential Service</b>				
Customer Charge	\$ 9.35	\$14.00		
Energy Charge per kWh	\$ 0.088950	\$ 0.088950		
Pay as You Go (Prepay)				
Customer Charge	\$ 9.35	\$ 14.00		
Incremental Charge	\$ 3.18	\$ 3.18		
<b>Schedule R - Residential Time-of-Day Rate</b>				
Customer Charge	\$ 15.00	\$ 19.65		
On-peak Energy per kWh	\$ 0.10473	\$ 0.10473		
Off-peak Energy per kWh	\$ 0.06000	\$ 0.06000		
<b>Schedule OL - Outdoor Lighting Service Rate</b>				
175 W MV	\$ 9.18	\$ 9.73		
175 W, shared MV	\$ 3.27	\$ 3.47		
250 W MV	\$ 10.53	\$ 11.16		
400 W MV	\$ 16.01	\$ 16.97		
1000 W MV	\$ 28.44	\$ 30.15		
100 W SV	\$ 9.47	\$ 10.04		
150 W SV	\$ 11.06	\$ 11.72		
250 W SV	\$ 15.06	\$ 15.96		
400 W SV	\$ 19.44	\$ 20.61		
1000 W SV	\$ 42.17	\$ 44.70		
LED Lighting	\$ 9.34	\$ 9.90		
<b>Schedule C - Comm. &amp; Indust. Service Rate &lt; 50 kW</b>				
Customer Charge	\$ 11.42	\$ 21.32		
Energy Charge	\$ 0.08424	\$ 0.08424		
<b>Schedule C - Comm. &amp; Indust. Service Rate &gt; 50 kW</b>				
Customer Charge	\$ 51.93	\$ 105.00		
Demand Charge per kW	\$ 7.12	\$ 7.89		
Energy Charge per kWh	\$ 0.06513	\$ 0.06513		
<b>Schedule C - Time-of-Day Commercial Service</b>				
Customer Charge	\$ 10.75	\$ 21.32		
<b>Schedule LPB-3 - Large Power</b>				
Customer Charge			\$ 2,737.00	\$ 2,937.00
Demand Charge per kW				
as per contract			\$ 7.17	\$ 7.77
per kW in excess of contract			\$ 9.98	\$ 9.98
Energy Charge per kWh			\$ 0.054382	\$ 0.054382
<b>Schedule LPB-4 - Large Power</b>				
Customer Charge			\$ 3,015.00	\$ 3,215.00
Demand Charge per kW				
as per contract			\$ 7.17	\$ 7.77
per kW in excess of contract			\$ 9.98	\$ 9.98
Energy Charge per kWh			\$ 0.051882	\$ 0.051882
<b>Schedule LPB-5 - Large Power</b>				
Customer Charge			\$ 4,301.00	\$ 4,501.00
Demand Charge per kW				
as per contract			\$ 7.17	\$ 7.77
per kW in excess of contract			\$ 9.98	\$ 9.98
Energy Charge per kWh			\$ 0.049382	\$ 0.049382
<b>Schedule LPE-1 Large Power Time of Day Rate Tariff</b>				
Customer Charge			\$ 816.00	\$ 1,016.00
Demand Charge per kW			\$ 6.02	\$ 6.62
Energy Charge per kWh				
On-Peak Energy			\$ 0.068279	\$ 0.068279
Off-Peak Energy			\$ 0.059554	\$ 0.059554
<b>Schedule LPE-2 Large Power Time of Day Rate Tariff</b>				
Customer Charge			\$ 1,088.00	\$ 1,288.00
Demand Charge per kW			\$ 6.02	\$ 6.62
Energy Charge per kWh				
On-Peak Energy			\$ 0.066279	\$ 0.066279
Off-Peak Energy			\$ 0.057554	\$ 0.057554
<b>Schedule LPE-3 Large Power Time of Day Rate Tariff</b>				
Customer Charge			\$ 2,737.00	\$ 2,937.00
Demand Charge per kW			\$ 6.02	\$ 6.62
Energy Charge per kWh				
On-Peak Energy			\$ 0.064779	\$ 0.064779

Energy Charge			Customer Charge	\$ 3,015.00	\$ 3,215.00
On-Peak per kWh	\$ 0.11814	\$ 0.11814	Demand Charge per kW	\$ 6.02	\$ 6.62
Off-Peak per kWh	\$ 0.06000	\$ 0.06000	Energy Charge per kWh		
<u>Schedule D - Large Comm/Ind Opt Time of Day Rate</u>			On-Peak Energy	\$ 0.062279	\$ 0.062279
Customer Charge	\$ 51.93	\$ 105.00	Off-Peak Energy	\$ 0.053554	\$ 0.053554
Demand Charge per kW	\$ 7.12	\$ 7.89	<u>Schedule LPE-5 Large Power Time of Day Rate Tariff</u>		
Energy Charge per kWh	\$ 0.06513	\$ 0.06513	Customer Charge	\$ 4,301.00	\$ 4,501.00
<u>Schedule E - Large Industrial Rate</u>			Demand Charge per kW	\$ 6.02	\$ 6.62
Customer Charge	\$ 1,142.46	\$ 1,142.46	Energy Charge per kWh		
Demand Charge per kW	\$ 7.12	\$ 7.89	On-Peak Energy	\$ 0.059779	\$ 0.059779
Energy Charge kWh	\$ 0.05163	\$ 0.05163	Off-Peak Energy	\$ 0.051054	\$ 0.051054
<u>Schedule SL - Street Lighting</u>			Rate Schedule NM - Net Metering		
Fluorescent 40 Watt, 16 kWh	\$ 0.05574	\$ 0.05908	Customer Charge		
175 W MV, 7,650 L, 70 kWh	\$ 0.05574	\$ 0.05908	NM and NM no fuel surcharge	\$ 9.35	\$ 14.00
250 W MV, 10,400 L, 98 kWh	\$ 0.05574	\$ 0.05908	Energy Charge per kWh (purchased)	\$ 0.08895	\$ 0.08895
400 W MV, 19,100 L, 156 kWh	\$ 0.05574	\$ 0.05908	<u>Schedule RM - Residential Off-Peak Marketing - ETS</u>		
100 W HPS, 8,550 L, 42 kWh	\$ 0.05574	\$ 0.05908	Energy Charge per kWh	\$ 0.05337	\$ 0.06000
150 W HPS, 63 kWh	\$ 0.05574	\$ 0.05908	<u>Schedule CM - Small Commercial Off-Peak Marketing - ETS</u>		
250 W HPS, 23,000 L, 105 kWh	\$ 0.05574	\$ 0.05908	Energy Charge	\$ 0.05054	\$ 0.06000
400 W HPS, 45,000 L, 165 kWh	\$ 0.05574	\$ 0.05908	The amount of the change requested in dollar amounts and percentage change for each customer classification is presented below:		
1,000 W HPS, 126,000 L, 385 kWh	\$ 0.05574	\$ 0.05908			
Metal Halide 175 Watt, 70 kWh	\$ 0.05574	\$ 0.05908			

<u>Schedule LPC-1 - Large Power</u>		
Customer Charge	\$ 816.00	\$ 1,016.00
Demand Charge per kW	\$ 7.17	\$ 7.77
Energy Charge per kWh	\$ 0.057882	\$ 0.057882
<u>Schedule LPC-2 - Large Power</u>		
Customer Charge	\$ 1,088.00	\$ 1,288.00
Demand Charge per kW	\$ 7.17	\$ 7.77
Energy Charge per kWh	\$ 0.055882	\$ 0.055882
<u>Schedule LPC-3 - Large Power</u>		
Customer Charge	\$ 2,737.00	\$ 2,937.00
Demand Charge	\$ 7.17	\$ 7.77
Energy Charge	\$ 0.054382	\$ 0.054382
<u>Schedule LPC-4 - Large Power</u>		
Customer Charge	\$ 3,015.00	\$ 3,215.00
Demand Charge per kW	\$ 7.17	\$ 7.77
Energy Charge per kWh	\$ 0.051882	\$ 0.051882
<u>Schedule LPC-5 - Large Power</u>		
Customer Charge	\$ 4,301.00	\$ 4,501.00
Demand Charge per kW	\$ 7.17	\$ 7.77
Energy Charge per kWh	\$ 0.049382	\$ 0.049382
<u>Schedule LPB-1 - Large Power</u>		
Customer Charge	\$ 816.00	\$ 1,016.00
Demand Charge per kW	\$ 7.17	\$ 7.77
as per contract	\$ 7.17	\$ 7.77
per kW in excess of contract	\$ 9.98	\$ 9.98
Energy Charge per kWh	\$ 0.057882	\$ 0.057882
<u>Schedule LPB-2 - Large Power</u>		
Customer Charge	\$ 1,088.00	\$ 1,288.00
Demand Charge per kW	\$ 7.17	\$ 7.77
as per contract	\$ 7.17	\$ 7.77
per kW in excess of contract	\$ 9.98	\$ 9.98
Energy Charge per kWh	\$ 0.055882	\$ 0.055882

	Increase	
	Dollar	Percent
Schedule R - Residential Service	1,275,978.60	4.4%
Schedule OL - Outdoor Lighting Service Rate	53,304.50	6.0%
Schedule C - Comm. & Indust. Service Rate < 50 kW	209,206.80	7.7%
Schedule C - Comm. & Indust. Service Rate > 50 kW	215,802.53	3.5%
Schedule C - Time-of-Day Commercial Service	2,147.52	4.6%
Schedule D - Large Comm/Ind Opt Time of Day Rate	7,157.04	7.7%
Schedule E - Large industrial Rate	71,617.39	1.9%
Schedule SL - Street Lighting	1,724.20	2.8%
Schedule LPC-2 - Large Power	9,661.68	2.1%
Schedule LPE-4 Large Power Time of Day Rate Tariff	40,905.30	2.0%
Schedule RM - Residential Off-Peak Marketing - ETS	5,482.57	12.4%
Schedule CM - Small Commercial Off-Peak Marketing - ETS	35.53	18.7%
Rate Schedule NM - Net Metering	781.20	8.1%
<b>Total</b>	<b>1,893,804.86</b>	<b>4.1%</b>

The amount of the average usage and the effect upon the average bill for each customer classification is provided below:

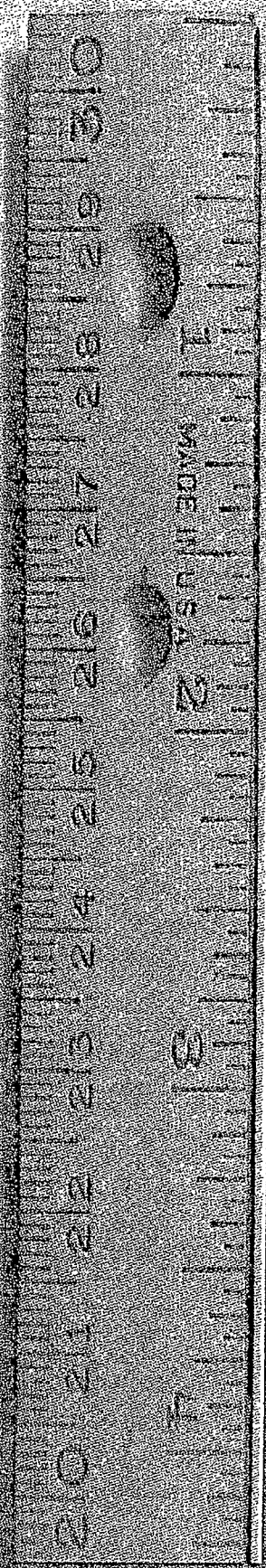
	Average Usage - kWh	Increase	
		Dollar	Percent
Schedule R - Residential Service	1,092	\$ 4.65	4.4%
Schedule OL - Outdoor Lighting Service Rate	68	\$ 0.57	6.0%
Schedule C - Comm. & Indust. Service Rate < 50 kW	1,399	\$ 9.90	7.7%
Schedule C - Comm. & Indust. Service Rate > 50 kW	68,081	\$ 199.50	3.4%
Schedule C - Time-of-Day Commercial Service	9,919	\$ 44.74	4.6%
Schedule D - Large Comm/Ind Opt Time of Day Rate	15,400	\$ 149.11	7.7%
Schedule E - Large industrial Rate	5,167,200	\$ 5,968.12	1.8%
Schedule SL - Street Lighting	5,784	\$ 20.53	2.8%
Schedule LPC-2 - Large Power	530,300	\$ 805.14	2.1%
Schedule LPB-4 Large Power Time of Day Rate Tariff	2,428,971	\$ 3,408.77	1.9%
Schedule RM - Residential Off-Peak Marketing - ETS	377	\$ 2.50	12.4%
Schedule CM - Small Commercial Off-Peak Marketing - ETS	313	\$ 2.96	18.7%
Rate Schedule NM - Net Metering	556	\$ 4.65	7.9%

A person may examine this application at the offices of Farmers Rural Electric located at 504 South Broadway, Glasgow, KY 42141. A person may also examine the application at the Public Service Commission's offices located at 211 Sower Boulevard, Frankfort, KY, Monday through Friday 8:00 a.m. to 4:30 p.m., or through the Public Service Commission's website at <http://psc.ky.gov>.

Comments regarding this application may be submitted to the Public Service Commission through its website or by mail to the Public Service Commission, Post Office Box 615, Frankfort, KY 40602.

The rates proposed in this application are the rates proposed by Farmers Rural Electric Cooperative Corp. However, the Public Service Commission may order rates to be charged that differ from these proposed rates. Such action may result in rates for consumers other than the rates in this application.

A person may submit a timely written request for intervention to the Public Service Commission, Post Office Box 615, Frankfort, KY 40602, establishing the grounds for the request including the status and interest of the party. If the Commission does not receive a written request for intervention within thirty (30) days of initial publication or mailing of the notice, the Commission may take final action on the application.



**The Classifieds...  
measuring up to your expectations one ad at a time.**

**The Herald-News**  
For information  
or rates  
call 432-3291

# Notarized Proof Of Publication

State of Kentucky

County of Adair

Before me, a notary public, in and for said county and state, this 28<sup>th</sup> day of November 2016, came Donna Hancock known to me, who duly sworn, states as follows: She is the Publisher of The Adair Progress, Inc. which publishes The Adair Progress Newspaper and that the said publications of November 10, November 17, and November 23, 2016 carried the advertisement of:

Official Notice

Regarding

An application to adjust its retail rates and charges

Donna Hancock 11-28-16

Melanie Olbry, Notary

My commission expires 6-23-18

AFFIDAVIT

This is to certify that the 9, 16, 23 day of November,  
2014 an ad for Farmers RECC

\_\_\_\_\_ was published in the regular edition of the Edmonson News  
\_\_\_\_\_, a newspaper published for general  
circulation in the City of Brownsville, Edmonson  
County and adjoining counties.

Pam Wright

COMMONWEALTH OF KENTUCKY

County of Hart

The foregoing was subscribed and sworn to before me by \_\_\_\_\_  
Pam Wright on this 23 day of November  
2014 in \_\_\_\_\_.

Leslie Loxton  
Notary Public, Kentucky, State-At-Large  
My commission expires: 02-09-19

# Firemen continued from page one

According to the Occupational Safety and Health Administration (OSHA), a set of turnout gear is only good for 10 years. After that allotted time expires, the state does not recommend a fireman using the equipment. What this means for Chalybeate is that they are in dire need of updating their over 10-year-old gear.

Daniel Johnson is the fire chief for Chalybeate Volunteer Fire Department. He briefly spoke on Nov. 5 (during the department's chili dinner) about the importance of the organization to Edmonson County residents. He and his team of 22 volunteers want to accomplish two things for the county; get people more involved in happenings for the department and to update equipment

being used.

"This is the first chili dinner we have done since I have been chief," Johnson said. "We put it together as an end of year gathering. We thought chili would be weather pertinent and get us a little extra money to purchase turnout gear for the firefighters. This is a major need for us. The turnout gear all of it is over 10 years old. Once it reaches over 10 years the state says you can't use it anymore. We have found a place that is selling the jacket, boots, helmets and gloves at a discounted price. The problem is that price is only good through December."

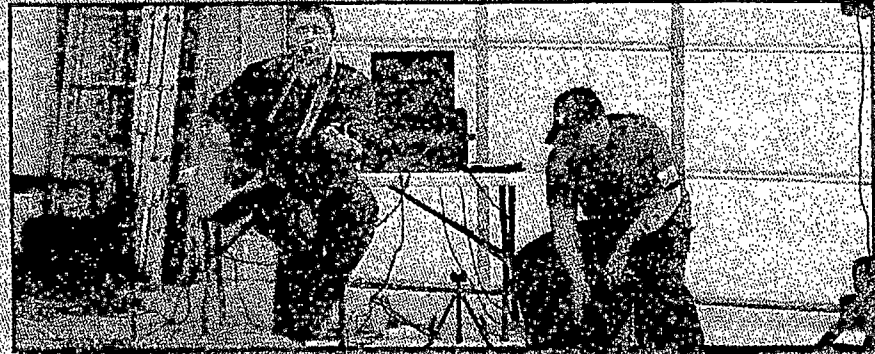
On average, a jacket and pants typically costs \$1,800 each. Then all the extras for the gear must be purchased. That total,

times 22, equals up to a hefty price for the volunteers to consume. Another plight for the team is operating on a \$33,000 annual budget.

"I want to make sure that my guys are kept safe when they go out on calls," he explained. "I also want to make sure that if they get hurt, the gear they have on is up to date. Workers comp won't pay for it if we aren't up to date on equipment."

He added, "We work on a very limited budget and try to stretch our dollars as far as we can. We have to make a payment on a brush truck, the building, utilities and much more. It costs a lot to keep a fire department operational."

An up-to-date department helps communities as



Corey Culbreth and Ethan Stice were the live entertainment for the chili dinner.

well. The better the rating, the lower the insurance cost for a homeowner. Several things go into effect; a department's call times, training for the volunteers, equipment being used, etc.

"We want people to get involved in the department," Johnson said. "We would love for people to come to our meetings. Ev-

erything we do is to keep them safe. They need to have their own stake in the department."

He added, "these firefighters spend a lot of time away from home; they sacrifice spending time with family, often even missing birthdays or holidays. These volunteers use their own vehicles and gas to attend trainings

to achieve certification. We train to the same standards as paid fire departments."

For more information on the Chalybeate Volunteer Fire Department, visit the organization's Facebook page at <https://www.facebook.com/>

## Official Notice

Farmers Rural Electric Cooperative Corporation, with its principal office at 504 South Broadway, Glasgow, KY 42141, intends to file with the Kentucky Public Service Commission in Case No. 2016-00365 an application to adjust its retail rates and charges. This adjustment will result in a general rate increase to the member-consumers of Farmers Rural Electric Cooperative Corporation. The proposed effective date of these new rates is December 15, 2016 and these rates are to be filed with the Commission on November 15, 2016.



	Rates	
	Present	Proposed
<b>Schedule R - Residential Service</b>		
Customer Charge	\$ 9.35	\$14.00
Energy Charge per kWh	\$0.088950	\$ 0.088950
Pay as You Go (Prepay)		
Customer Charge	\$ 9.35	\$ 14.00
Incremental Charge	\$3.18	\$ 3.18
<b>Schedule R - Residential Time-of-Day Rate</b>		
Customer Charge	\$ 15.00	\$ 19.65
On-peak Energy per kWh	\$0.10473	\$0.10473
Off-peak Energy per kWh	\$ 0.06000	\$ 0.06000
<b>Schedule OL - Outdoor Lighting Service Rate</b>		
175 W MV	\$ 9.18	\$ 9.73
175 W, shared MV	\$ 3.27	\$ 3.47
250 W MV	\$ 10.53	\$ 11.16
400 W MV	\$ 16.01	\$ 16.97
1000 W MV	\$ 28.44	\$ 30.15
100 W SV	\$ 9.47	\$ 10.04
150 W SV	\$ 11.06	\$ 11.72
250 W SV	\$ 15.06	\$ 15.96
400 W SV	\$ 19.44	\$ 20.61
1000 W SV	\$ 42.17	\$ 44.70
LED Lighting	\$ 9.34	\$ 9.90
<b>Schedule C - Comm. &amp; Indust. Service Rate &lt; 50 kW</b>		
Customer Charge	\$ 11.42	\$ 21.32
Energy Charge	\$ 0.08424	\$ 0.08424
<b>Schedule C - Comm. &amp; Indust. Service Rate &gt; 50 kW</b>		
Customer Charge	\$ 51.93	\$ 105.00
Demand Charge per kW	\$ 7.12	\$ 7.89
Energy Charge per kWh	\$ 0.06513	\$ 0.06513
<b>Schedule C - Time-of-Day Commercial Service</b>		
Customer Charge		
Single Phase Service	\$ 19.75	\$ 21.32
Three Phase Service	\$ 60.26	\$ 105.00
Energy Charge		
On-Peak per kWh	\$ 0.11814	\$ 0.11814
Off-Peak per kWh	\$ 0.06000	\$ 0.06000
<b>Schedule D - Large Comm/Ind Opt Time of Day Rate</b>		
Customer Charge	\$ 51.93	\$ 105.00
Demand Charge per kW	\$ 7.12	\$ 7.89
Energy Charge per kWh	\$ 0.06513	\$ 0.06513
<b>Schedule E - Large Industrial Rate</b>		
Customer Charge	\$ 1,142.46	\$ 1,142.46
Demand Charge per kW	\$ 7.12	\$ 7.89
Energy Charge kWh	\$ 0.05163	\$ 0.05163
<b>Schedule SL - Street Lighting</b>		
Fluorescent 40 Watt, 16 kWh	\$ 0.05574	\$ 0.05908
175 W MV, 7,650 L, 70 kWh	\$ 0.05574	\$ 0.05908
250 W MV, 10,400 L, 98 kWh	\$ 0.05574	\$ 0.05908
400 W MV, 19,100 L, 156 kWh	\$ 0.05574	\$ 0.05908
100 W HPS, 8,550 L, 42 kWh	\$ 0.05574	\$ 0.05908
150 W HPS, 63 kWh	\$ 0.05574	\$ 0.05908
250 W HPS, 23,000 L, 105 kWh	\$ 0.05574	\$ 0.05908
400 W HPS, 45,000 L, 165 kWh	\$ 0.05574	\$ 0.05908
1,000 W HPS, 126,000 L, 385 kWh	\$ 0.05574	\$ 0.05908
Metal Halide 175 Watt, 70 kWh	\$ 0.05574	\$ 0.05908
<b>Schedule LPC-1 - Large Power</b>		
Customer Charge	\$ 816.00	\$ 1,016.00
Demand Charge per kW	\$ 7.17	\$ 7.77
Energy Charge per kWh	\$ 0.057882	\$ 0.057882

	Increase	
	Dollar	Percent
<b>Customer Charge</b>		
Demand Charge per kW	\$ 7.17	\$ 7.77
as per contract	\$ 9.98	\$ 9.98
per kW in excess of contract	\$ 0.054382	\$ 0.054382
Energy Charge per kWh		
<b>Schedule LPB-4 - Large Power</b>		
Customer Charge	\$ 3,015.00	\$ 3,215.00
Demand Charge per kW		
as per contract	\$ 7.17	\$ 7.77
per kW in excess of contract	\$ 9.98	\$ 9.98
Energy Charge per kWh	\$ 0.051882	\$ 0.051882
<b>Schedule LPB-5 - Large Power</b>		
Customer Charge	\$ 4,301.00	\$ 4,501.00
Demand Charge per kW		
as per contract	\$ 7.17	\$ 7.77
per kW in excess of contract	\$ 9.98	\$ 9.98
Energy Charge per kWh	\$ 0.049382	\$ 0.049382
<b>Schedule LPE-1 Large Power Time of Day Rate Tariff</b>		
Customer Charge	\$ 816.00	\$ 1,016.00
Demand Charge per kW	\$ 6.02	\$ 6.62
Energy Charge per kWh		
On-Peak Energy	\$ 0.068279	\$ 0.068279
Off-Peak Energy	\$ 0.059554	\$ 0.059554
<b>Schedule LPE-2 Large Power Time of Day Rate Tariff</b>		
Customer Charge	\$ 1,088.00	\$ 1,288.00
Demand Charge per kW	\$ 6.02	\$ 6.62
Energy Charge per kWh		
On-Peak Energy	\$ 0.066279	\$ 0.066279
Off-Peak Energy	\$ 0.057554	\$ 0.057554
<b>Schedule LPE-3 Large Power Time of Day Rate Tariff</b>		
Customer Charge	\$ 2,737.00	\$ 2,937.00
Demand Charge per kW	\$ 6.02	\$ 6.62
Energy Charge per kWh		
On-Peak Energy	\$ 0.064779	\$ 0.064779
Off-Peak Energy	\$ 0.056054	\$ 0.056054
<b>Schedule LPE-4 Large Power Time of Day Rate Tariff</b>		
Customer Charge	\$ 3,015.00	\$ 3,215.00
Demand Charge per kW	\$ 6.02	\$ 6.62
Energy Charge per kWh		
On-Peak Energy	\$ 0.062279	\$ 0.062279
Off-Peak Energy	\$ 0.053554	\$ 0.053554
<b>Schedule LPE-5 Large Power Time of Day Rate Tariff</b>		
Customer Charge	\$ 4,301.00	\$ 4,501.00
Demand Charge per kW	\$ 6.02	\$ 6.62
Energy Charge per kWh		
On-Peak Energy	\$ 0.059779	\$ 0.059779
Off-Peak Energy	\$ 0.051054	\$ 0.051054
<b>Rate Schedule NM - Net Metering</b>		
Customer Charge		
NM and NM no fuel surcharge	\$ 9.35	\$ 14.00
Energy Charge per kWh (purchased)	\$ 0.08895	\$ 0.08895
<b>Schedule RM - Residential Off-Peak Marketing - ETS</b>		
Energy Charge per kWh	\$ 0.05337	\$ 0.06000
<b>Schedule CM - Small Commercial Off-Peak Marketing - ETS</b>		
Energy Charge	\$ 0.05054	\$ 0.06000

The amount of the change requested in dollar amounts and percentage change for each customer classification is presented below:

	Increase	
	Dollar	Percent
Schedule R - Residential Service	1,275,978.60	4.4%
Schedule OL - Outdoor Lighting Service Rate	53,304.50	6.0%

<b>Schedule LPC-1 - Large Power</b>		
Customer Charge	\$ 816.00	\$ 1,016.00
Demand Charge per kW	\$ 7.17	\$ 7.77
Energy Charge per kWh	\$ 0.057882	\$ 0.057882
<b>Schedule LPC-2 - Large Power</b>		
Customer Charge	\$ 1,088.00	\$ 1,288.00
Demand Charge per kW	\$ 7.17	\$ 7.77
Energy Charge per kWh	\$ 0.055882	\$ 0.055882
<b>Schedule LPC-3 - Large Power</b>		
Customer Charge	\$ 2,737.00	\$ 2,937.00
Demand Charge	\$ 7.17	\$ 7.77
Energy Charge	\$ 0.054382	\$ 0.054382
<b>Schedule LPC-4 - Large Power</b>		
Customer Charge	\$ 3,015.00	\$ 3,215.00
Demand Charge per kW	\$ 7.17	\$ 7.77
Energy Charge per kWh	\$ 0.051882	\$ 0.051882
<b>Schedule LPC-5 - Large Power</b>		
Customer Charge	\$ 4,301.00	\$ 4,501.00
Demand Charge per kW	\$ 7.17	\$ 7.77
Energy Charge per kWh	\$ 0.049382	\$ 0.049382
<b>Schedule LPB-1 - Large Power</b>		
Customer Charge	\$ 816.00	\$ 1,016.00
Demand Charge per kW	\$ 7.17	\$ 7.77
as per contract	\$ 7.17	\$ 7.77
per kW in excess of contract	\$ 9.98	\$ 9.98
Energy Charge per kWh	\$ 0.057882	\$ 0.057882
<b>Schedule LPB-2 - Large Power</b>		
Customer Charge	\$ 1,088.00	\$ 1,288.00
Demand Charge per kW	\$ 7.17	\$ 7.77
as per contract	\$ 7.17	\$ 7.77
per kW in excess of contract	\$ 9.98	\$ 9.98
Energy Charge per kWh	\$ 0.055882	\$ 0.055882

	Dollar	Percent
Schedule R - Residential Service	1,275,978.60	4.4%
Schedule OL - Outdoor Lighting Service Rate	53,304.50	6.0%
Schedule C - Comm. & Indust. Service Rate < 50 kW	209,206.80	7.7%
Schedule C - Comm. & Indust. Service Rate > 50 kW	215,802.53	3.5%
Schedule C - Time-of-Day Commercial Service	2,147.52	4.6%
Schedule D - Large Comm/Ind Opt Time of Day Rate	7,157.04	7.7%
Schedule E - Large industrial Rate	71,617.39	1.9%
Schedule SL - Street Lighting	1,724.20	2.8%
Schedule LPC-2 - Large Power	9,661.68	2.1%
Schedule LPE-4 Large Power Time of Day Rate Tariff	40,905.30	2.0%
Schedule RM - Residential Off-Peak Marketing - ETS	5,482.57	12.4%
Schedule CM - Small Commercial Off-Peak Marketing - ETS	35.53	18.7%
Rate Schedule NM - Net Metering	781.20	8.1%
<b>Total</b>	<b>1,893,804.86</b>	<b>4.1%</b>

The amount of the average usage and the effect upon the average bill for each customer classification is provided below:

	Average		Percent
	Usage - kWh	Dollar	
Schedule R - Residential Service	1,092	\$4.65	4.4%
Schedule OL - Outdoor Lighting Service Rate	68	\$ 0.57	6.0%
Schedule C - Comm. & Indust. Service Rate < 50 kW	1,399	\$ 9.90	7.7%
Schedule C - Comm. & Indust. Service Rate > 50 kW	68,081	\$ 199.50	3.4%
Schedule C - Time-of-Day Commercial Service	9,919	\$ 44.74	4.6%
Schedule D - Large Comm/Ind Opt Time of Day Rate	15,400	\$ 149.11	7.7%
Schedule E - Large industrial Rate	5,167,200	\$ 5,968.12	1.8%
Schedule SL - Street Lighting	5,784	\$ 20.53	2.8%
Schedule LPC-2 - Large Power	530,300	\$ 805.14	2.1%
Schedule LPE-4 Large Power Time of Day Rate Tariff	2,428,971	\$ 3,408.77	1.9%
Schedule RM - Residential Off-Peak Marketing - ETS	377	\$ 2.50	12.4%
Schedule CM - Small Commercial Off-Peak Marketing - ETS	313	\$ 2.96	18.7%
Rate Schedule NM - Net Metering	556	\$ 4.65	7.9%

A person may examine this application at the offices of Farmers Rural Electric located at 504 South Broadway, Glasgow, KY 42141. A person may also examine the application at the Public Service Commission's offices located at 211 Sower Boulevard, Frankfort, KY, Monday through Friday 8:00 a.m. to 4:30 p.m., or through the Public Service Commission's website at <http://psc.ky.gov>.

Comments regarding this application may be submitted to the Public Service Commission through its website or by mail to the Public Service Commission, Post Office Box 615, Frankfort, KY 40602.

The rates proposed in this application are the rates proposed by Farmers Rural Electric Cooperative Corp. However, the Public Service Commission may order rates to be charged that differ from these proposed rates. Such action may result in rates for consumers other than the rates in this application.

A person may submit a timely written request for intervention to the Public Service Commission, Post Office Box 615, Frankfort, KY 40602, establishing the grounds for the request including the status and interest of the party. If the Commission does not receive a written request for intervention within thirty (30) days of initial publication or mailing of the notice, the Commission may take final action on the application.

**The Record**  
209 C West White Oak Street  
Leitchfield, KY 42754  
270-259-6061

**AFFIDAVIT  
PROOF OF PUBLICATION**

I, Alicia Carter do hereby certify that I hold the position of Office/Circulation Mgr. with The Record, 209 C West White Oak Street, Leitchfield, KY 42754, and in such position have the responsibility of publication of display advertising in said newspaper and that the attached advertisement has been published in all editions of said newspaper on 11-10-16.

Alicia M. Carter Office Mgr.  
(Title)

Subscribed and sworn before me in my presence, this the 23rd day of November.

[Signature] FD# 494938  
(Notary Public)

My commission expires 8-12-17.

**The Record**  
209 C West White Oak Street  
Leitchfield, KY 42754  
270-259-6061

**AFFIDAVIT  
PROOF OF PUBLICATION**

I, Alicia Carter do hereby certify that I hold the position of Office/Circulation Mgr. with The Record, 209 C West White Oak Street, Leitchfield, KY 42754, and in such position have the responsibility of publication of display advertising in said newspaper and that the attached advertisement has been published in all editions of said newspaper on 11-17-16.

Alicia M. Carter Office Mgr.  
(Title)

Subscribed and sworn before me in my presence, this the 23rd day of Nov ~~2016~~ November.

David Roth 494938  
(Notary Public)

My commission expires 8-12-17.

**The Record**  
209 C West White Oak Street  
Leitchfield, KY 42754  
270-259-6061

**AFFIDAVIT  
PROOF OF PUBLICATION**

I, Alicia Carter do hereby certify that I hold the position of Office/Circulation Mgr. with The Record, 209 C West White Oak Street, Leitchfield, KY 42754, and in such position have the responsibility of publication of display advertising in said newspaper and that the attached advertisement has been published in all editions of said newspaper on 11-24-16.

Alicia M. Carter Office Mgr.  
(Title)

Subscribed and sworn before me in my presence, this the 23<sup>rd</sup> day of November.

Lois E. Rutz #494938  
(Notary Public)

My commission expires 8-12-17.

advertising material for Farmer's Rural electric  
appeared in the Greensburg Record-Herald on the date(s):  
11-9, 11-16, 11-23, 2016.

Captal Coal  
Signature

Office Manager  
Title

Captal Coal, who certifies that any and all  
advertising material for Farmer's Rural electric  
appeared in the Greensburg Record-Herald on the date(s):  
11-9, 11-16, 11-23, 2016.

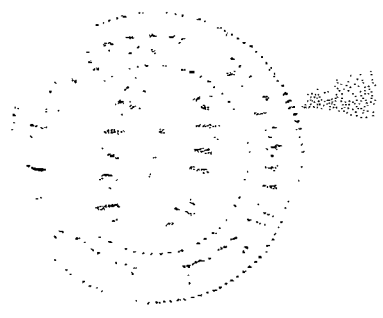
Captal Coal  
Signature

Office Manager  
Title

State of Kentucky  
County of Green

Sworn to and subscribed before me on the 28 day of  
December, 2016.

Lyndee Henderson  
Notary Public  
September 4, 2019  
My Commission Expires





Find public notices online. A service of the Kentucky Press Association and Kentucky's newspapers!

Greensburg Record-Herald CLASSIFIED

Call 932-4381 to Place your Ad! 20 words or less \$8, \$7 when paid in advance! Classifieds are also on the Record-Herald website, www.record-herald.com.

For Sale

Brand New Mattress set in plastic. 270-769-8322. Delivery available.

New Insulated panels for sale. Insulated panel building.

Windows Custom Built Windows for older homes. Call Weiser Windows.

Services Offered

MOVING TO A NEW LOCATION! Ade Maez Alric Nook will be moving to 105 Taxes Street.

Windows Custom Built Windows for older homes. Call Weiser Windows.

Wanted

STANDING TIMBER OR lumber to cut on shares. Call 932-6326.

Yard Sale Yard Sale Friday and Saturday 12th & Valley Drive, Greensburg 9 a.m. to 2 p.m. CST.

For Rent Two bedroom mobile home for rent also a one bedroom mobile home for rent.

Notice

ABSOLUTE YELLY HUNTING or bespousing or land of Robert and Ellen. Check out Survivor in Green and Melocain County, Ky. without written permission, dated to current hunting year, and without Any past written permission are outraged and old, therefore null and void. Notices will be prosecuted.

Yard Sale Yard Sale Friday and Saturday 12th & Valley Drive, Greensburg 9 a.m. to 2 p.m. CST.

For Rent Two bedroom mobile home for rent also a one bedroom mobile home for rent.

Help Wanted

Green County TLC Daycare, 638 Old Hodgshills Road is seeking applications for Child Care Workers. Must apply in person, be 18 years of age, have a High School Diploma or GED, be a non-smoker and undergo a background check.

Yard Sale Yard Sale Friday and Saturday 12th & Valley Drive, Greensburg 9 a.m. to 2 p.m. CST.

For Rent Two bedroom mobile home for rent also a one bedroom mobile home for rent.

Food Service Worker

Jane Todd Crawford Hospital has an immediate opening for a food service worker.

Yard Sale Yard Sale Friday and Saturday 12th & Valley Drive, Greensburg 9 a.m. to 2 p.m. CST.

For Rent Two bedroom mobile home for rent also a one bedroom mobile home for rent.

For Sale

2016 Model, White, 24 foot x 8 foot cargo trailer 5200 lb. axles, LED lights, 12 volt fluorescent lights inside, excellent condition. Now at Warner Trailer, Campbellsburg, Call Brandon Cox, Taylor County, 270-843-5784.

Yard Sale Yard Sale Friday and Saturday 12th & Valley Drive, Greensburg 9 a.m. to 2 p.m. CST.

For Rent Two bedroom mobile home for rent also a one bedroom mobile home for rent.

Deadline for news and advertising is 2 p.m. central time Monday.

Just Family Adult Day Care, Inc. is hiring a part-time aide, and a part-time cook. Apply in person at 501 Industrial Park Road, Greensburg, KY 42743.

Yard Sale Yard Sale Friday and Saturday 12th & Valley Drive, Greensburg 9 a.m. to 2 p.m. CST.

For Rent Two bedroom mobile home for rent also a one bedroom mobile home for rent.

Official Notice Farmers Rural Electric Cooperative Corporation, with its principal office at 504 South Broadway, Glasgow, KY 42141, intends to file with the Kentucky Public Service Commission in Case No. 2016-00345 an application to adjust its retail rates and charges. This adjustment will result in a general rate increase to the membership of Farmers Rural Electric Cooperative Corporation. The proposed effective date of these new rates is December 15, 2016 and these rates are to be filed with the Commission on November 15, 2016.

Table with columns for Schedule, Current Rate, Proposed Rate, and Average Demand. It lists various service rates for residential, commercial, and industrial customers, including demand charges and energy charges.

The amount of the change requested in dollar amounts and percentage change for each customer classification is presented below. The amount of the average usage and the effect upon the average bill for each customer classification is provided below.

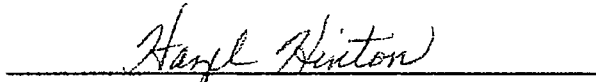
10 REASONS TO READ YOUR LOCAL NEWSPAPER. 1. You want to save money. 2. You need a job. 3. You've outgrown your home or apartment. 4. Your car is kaput. 5. You're craving a something to do. 6. You're dying to know who won the game. 7. You're looking for a laugh. 8. You need a service. 9. You need something to talk about. 10. You need information fast.

AFFIDAVIT OF PUBLICATION

I, Allison Shepherd, Publisher of The LaRue County Herald News, do hereby certify that the Official Notice from Farmers Rural Electric Cooperative Corporation regarding filing of application for rate adjustment did appear in the November 9, 2016 (Pg 12A), November 16, 2016 (Pg 7B) and November 23, 2016 (Pg 6B) editions of The LaRue County Herald News.

  
Allison Shepherd

Subscribed and sworn to before me this the 12<sup>th</sup> day of December, 2016.

  
Notary Public

My commission expires the 14<sup>th</sup> day of April 20 17