



a PPL company

Mr. Jeff DeRouen
Executive Director
Kentucky Public Service Commission
211 Sower Boulevard
Frankfort, KY 40601

November 14, 2013

RE:

**Application of Kentucky Utilities Company for Authorization of
Changes in Service Territory with Blue Grass Energy
Case No. 2013-00368**

Dear Mr. DeRouen:

Attached please find two complete set of maps clarifying the boundary agreement previously submitted by Kentucky Utilities Company ("KU") in the above-mentioned case. These maps should replace the original maps filed on October 7, 2013 with your office.

KU, with agreement from Blue Grass Energy, participated in a teleconference on October 31, 2013 with Commission staff to understand map discrepancies found in the original filing. KU made the necessary changes and signatories from both KU and Blue Grass Energy are affixed to both maps.

If you have additional questions please contact Marty Reinert at 502-627-4173.

Sincerely,

A handwritten signature in black ink that reads 'Rick E. Lovekamp'.

Rick E. Lovekamp

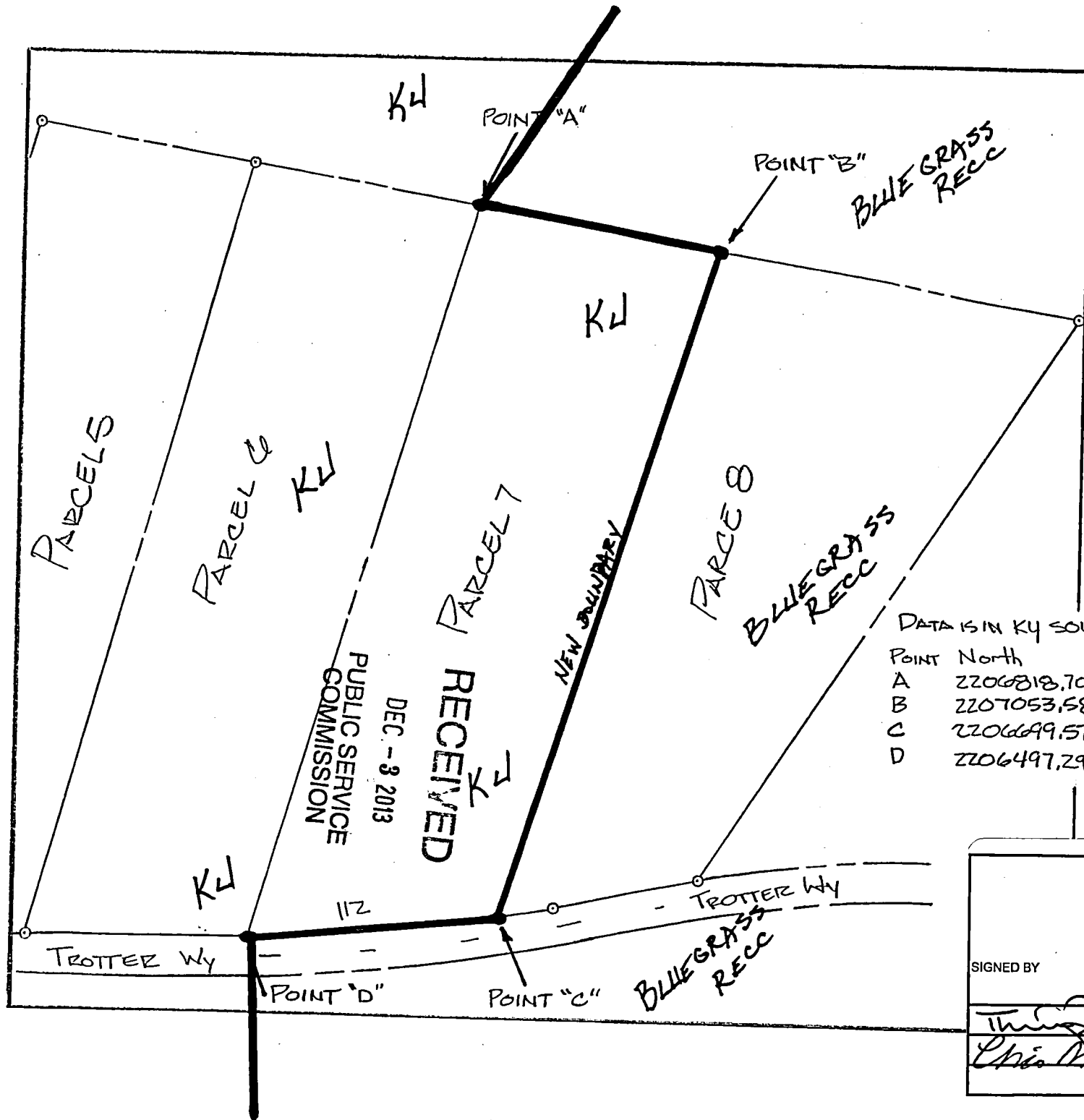
RECEIVED

DEC - 3 2013

PUBLIC SERVICE
COMMISSION

Kentucky Utilities Company
State Regulation and Rates
220 W. Main Street
PO Box 32010
Louisville, Kentucky 40232
www.lge-ku.com

Rick Lovekamp
Manager, Regulatory Affairs
T 502-627-3780
F 502-627-3213
Rick.Lovekamp@lge-ku.com



Note:
 Parcel #7
 112 Trotter Way
 Wilmore Ky. 40390

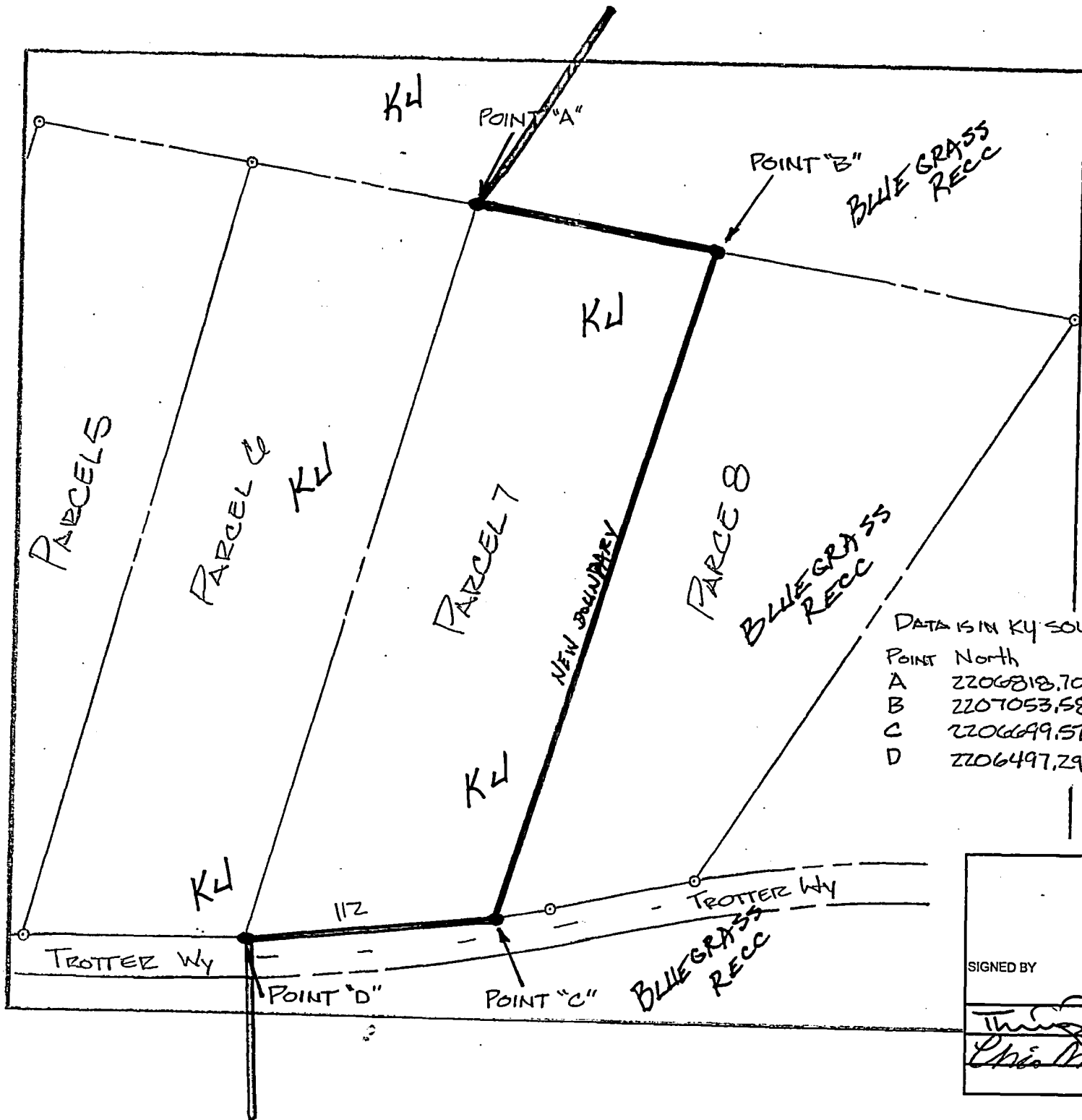
DATA IS IN KY SOUTH PSC 1983 DATUM

POINT	North	East
A	2206818.70	1945492.22
B	2207053.58	1945585.67
C	2206699.51	1946377.83
D	2206497.29	1946383.28

PUBLIC SERVICE
 COMMISSION
 DEC - 3 2013

RECEIVED

BOUNDARY LINE		
REVISION		
SIGNED BY	COMPANY	DATE
<i>Theresa</i>	K4	11/7/13
<i>Chris</i>	BLUEGRASS RECC	11-7-13



Note:
 Parcel #7
 112 Trotter Way
 Wilmore KY. 40390

DATA IS IN KY SOUTH PSC 1983 DATUM

POINT	North	East
A	2206818.70	1945492.22
B	2207053.58	1945585.67
C	2206699.57	1946377.83
D	2206497.29	1946383.28

BOUNDARY LINE		
REVISION		
SIGNED BY	COMPANY	DATE
<i>Thompson</i>	KW	11/7/13
<i>Chris Moore</i>	BGE	11-7-13