

SET-UP INSTRUCTIONS FOR KY RTP BILLING - 2012

I. Non-customer-specific Set-up in SCBE

- Price Designators

Special Contract Billing Engine v4.5 - D001751

RTP Price Designators

Price Designator	Company	Jurisdiction	Service Level	Load Reduction
CEAS_HRLY	WTU	TX	0	False
LSS	SEP	TX	0	False
MCPEL_N02	WTU	TX	0	False
MCPEL_S02	WTU	TX	0	False
MCPEL_W02	WTU	TX	0	False
SL-3	KYP	KY	3	False
SL-4	KYP	KY	4	False
SL-5	KYP	KY	5	False
SL-6	KYP	KY	6	False
SL1	PSO	OK	1	False
SL1LR	PSO	OK	1	True
SL2	PSO	OK	2	False
SL2LR	PSO	OK	2	True
SL3	PSO	OK	3	False
SL3LR	PSO	OK	3	True
SL5	PSO	OK	5	False
SL5LR	PSO	OK	5	True
TSGA	PSO	OK	1	False

Buttons: Add, Edit, Remove, Close

Note: Price Designator code must match price-designator in CCS.

- Tariff Items

1/1/2007 Other Market Services Charge DECIMAL
 OTHERMKTSVCCHG 0 WIN

Tariff Item [(new)]

Start Date: 1 / 1 / 2007 End Date:

Long Name: Other Market Services Charge

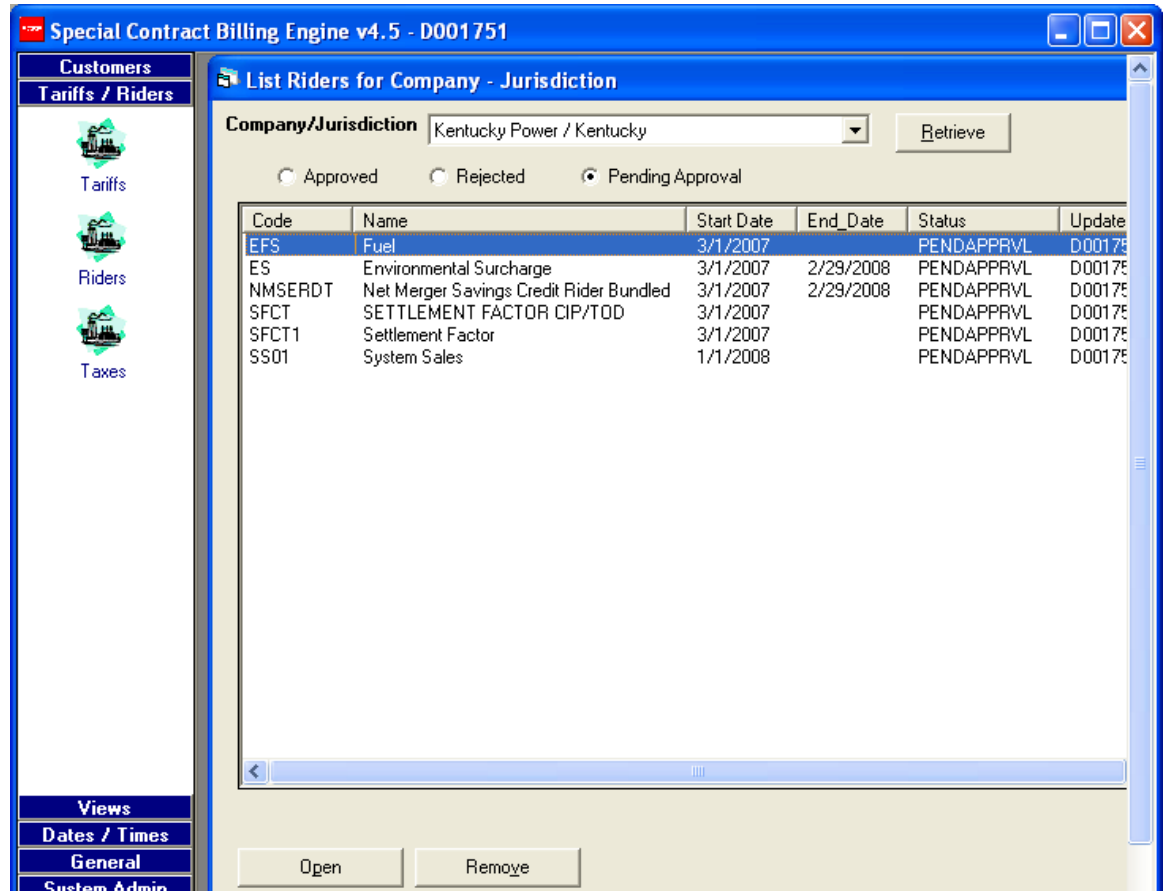
Data Type: DECIMAL

Season: Winter Gen/Trans/Dist:

Invoice Cell Ref: OTHERMKTSVCCHG

List Sequence #: 0

- Riders
Add Rider (if no rider with this code exists), edit date otherwise:
EFS – Fuel
ES – Environmental Surcharge
NMSERDT – Net Merger Savings Credit Rider Bundled
SS01 – System Sales
SFCT – Settlement Factor CIP/TOD
SFCT1 – Settlement Factor



Request and receive approval for each.

- Tariff for Opco/Jurisdiction (tie in tariff & rider items)

366	QP Sec	QP SEC
367	QP Pri	QP PRI
368	QP Sub	QP SUB
369	QP Trans	QP TRANS
377	CIP Pri	CIP PRIMARY
378	CIP SUB	CIP SUBTRANSMISSION
379	CIP Trans	CIP TRANSMISSION

Templates are:

KY RTP Master QP v?.xls
 KY RTP Master CIP v?.xls

- Riders
- Taxes

List Tariffs for Company - Jurisdiction

Company/Jurisdiction: Kentucky Power / Kentucky Retrieve

Approved Rejected Pending Approval

Code	Designator	Name	Start Date	End Date	Status	Update
366	QP Sec	QP SEC	1/1/2007		PENDAPPRVL	D00179
367	QP Pri	QP PRI	1/1/2007		PENDAPPRVL	D00179
368	QP Sub	QP SUB	1/1/2007		PENDAPPRVL	D00179
369	QP Trans	QP TRANS	1/1/2007		PENDAPPRVL	D00179
377	CIP Pri	CIP PRIMARY	1/1/2007		PENDAPPRVL	D00179
378	CIP SUB	CIP Subtransmission	1/1/2007		PENDAPPRVL	D00179
379	CIP Trans	CIP Transmission	1/1/2007		PENDAPPRVL	D00179

Open For Approval Remove Close

Tariff Table

Code: 366 Designator: QP Sec Company / Jurisdiction: Kentucky Power / Kentucky

Name: QP SEC Winter Start Mth: 1 Winter End Mth: 12

Start Date: 1 / 1 / 2007 End Date: Interrupt Type:

Consumption Bill Calculation Worksheet:

Invoice Template:
 File Path: W:\EXTERNAL\RBFiles\SpclBIng Prorate: Backup Min Hours: 0 Max Hours: 0
 File Name: KY RTP Master QP v4.xls Browse Maintenance Min Hours: 0 Max Hours: 0

Gen/Dis/Tm	Season	Item	Value
Distribution	Winter	1st Block Demand Charge	4.46
Transmission	Winter	1st Block Demand Charge	1.29
	Winter	Other Market Services Charge	0.002915
	Winter	Customer Charge	276.00
	Winter	Ratchet Percent	.60
	Winter	KVAR Charge	.670
	Winter	1st Block Demand Charge	13.280
	Winter	Excess Demand Charge	4.790
	Winter	1st Block KWH Charge	.02569
		Capacity Chg for Highly Fluctuating Loads	2.98503

Rider Code	Rider Name	Invoice Seq #
EFS	Fuel	1
NMSERDT	Net Merger Savings Credit Rider Bundled	2
SS01	System Sales	3
ES	Environmental Surcharge	4
SFCT	SETTLEMENT FACTOR CIP/TOD	5

Created by: D001751 on 6/25/2012 5:22:19 PM Eastern Time Tariff ID: 5161

Status: Pending Approval Updated by: D001751 on 6/25/2012 5:47:39 PM Eastern Time Table ID: 1

Tariff Table

Code: 367 Designator: QP Pri Company / Jurisdiction: Kentucky Power / Kentucky

Name: QP PRI Winter Start Mth: 1 Winter End Mth: 12

Start Date: 1 / 1 / 2007 End Date: Interrupt Type:

Consumption Bill Calculation Worksheet:

Invoice Template:
 File Path: W:\EXTERNAL\RBFiles\SpclBIng Prorate: Backup Min Hours: 0 Max Hours: 0
 File Name: KY RTP Master QP v4.xls Browse Maintenance Min Hours: 0 Max Hours: 0

Gen/Dis/Tm	Season	Item	Value
Distribution	Winter	1st Block Demand Charge	2.77
Transmission	Winter	1st Block Demand Charge	1.259
	Winter	Other Market Services Charge	0.002842
	Winter	Customer Charge	276.00
	Winter	Ratchet Percent	.60
	Winter	KVAR Charge	.670
	Winter	1st Block Demand Charge	11.530
	Winter	Excess Demand Charge	3.310
	Winter	1st Block KWH Charge	.0251170
		Capacity Chg for Highly Fluctuating Loads	2.90768

Rider Code	Rider Name	Invoice Seq #
EFS	Fuel	1
NMSERDT	Net Merger Savings Credit Rider Bundled	2
SS01	System Sales	3
ES	Environmental Surcharge	4
SFCT1	Settlement Factor	5

Created by: D001751 on 6/25/2012 5:49:15 PM Eastern Time Tariff ID: 5162

Status: Pending Approval Updated by: D001751 on 6/25/2012 6:08:17 PM Eastern Time Table ID: 1

Tariff Table

Code: 368 Designator: QP Sub Company / Jurisdiction: Kentucky Power / Kentucky

Name: QP SUB Winter Start Mth: 1 Winter End Mth: 12

Start Date: 1 / 1 / 2007 End Date: Interrupt Type:

Consumption Bill Calculation Worksheet:

Invoice Template:
 File Path: W:\EXTERNAL\RBFiles\SpclBIng Prorate: Backup Min Hours: 0 Max Hours: 0
 File Name: KY RTP Master QP v4.xls Browse Maintenance Min Hours: 0 Max Hours: 0

Gen/Dis/Tm	Season	Item	Value
Transmission	Winter	1st Block Demand Charge	1.232
	Winter	Other Market Services Charge	0.002800
	Winter	Customer Charge	662.00
	Winter	Ratchet Percent	.60
	Winter	KVAR Charge	.670
	Winter	1st Block Demand Charge	8.81
	Winter	1st Block Off-Peak Demand Charge	.880
	Winter	Excess Demand Charge	.880
	Winter	1st Block KWH Charge	.0248500
		Capacity Chg for Highly Fluctuating Loads	2.84504

Rider Code	Rider Name	Invoice Seq #
EFS	Fuel	1
NMSERDT	Net Merger Savings Credit Rider Bundled	2
SS01	System Sales	3
ES	Environmental Surcharge	4
SFCT1	Settlement Factor	5

Created by: D001751 on 6/25/2012 6:10:30 PM Eastern Time Tariff ID: 5163

Status: Pending Approval Updated by: D001751 on 6/25/2012 6:17:50 PM Eastern Time Table ID: 1

Tariff Table

Code: 369 **Designator:** QP Trans **Company / Jurisdiction:** Kentucky Power / Kentucky
Name: QP TRANS **Winter Start Mth:** 1 **Winter End Mth:** 12
Start Date: 1 / 1 / 2007 End Date **Interrupt Type:** _____
Consumption Bill Calculation Worksheet: _____
Invoice Template: _____ Prorate **Backup Min Hours:** 0 **Max Hours:** 0
File Path: W:\EXTERNAL\RBFiles\SpclBIng **Maintenance Min Hours:** 0 **Max Hours:** 0
File Name: KY RTP Master QP v4.xls

Gen/Dis/Tm	Season	Item	Value
Transmission	Winter	1st Block Demand Charge	1.213
	Winter	Other Market Services Charge	0.002765
	Winter	Customer Charge	1353.00
	Winter	Ratchet Percent	.60
	Winter	KVAR Charge	.670
	Winter	1st Block Demand Charge	7.470
	Winter	1st Block Off-Peak Demand Charge	.770
	Winter	Excess Demand Charge	.770
	Winter	1st Block KWH Charge	.02460
		Capacity Chg for Highly Fluctuating Loads	2.80291

Rider Code	Rider Name	Invoice Seq #
EFS	Fuel	1
NMSERDT	Net Merger Savings Credit Rider Bundled	2
SS01	System Sales	3
ES	Environmental Surcharge	4
SFCT	SETTLEMENT FACTOR CIP/TOD	5

Created by: D001751 on 6/25/2012 6:24:55 PM Eastern Time Tariff ID: 5164
 Status: Pending Approval Updated by: D001751 on 6/25/2012 6:32:08 PM Eastern Time Table ID: 1

Tariff Table

Code: 377 Designator: CIP Pri Company / Jurisdiction: Kentucky Power / Kentucky

Name: CIP PRIMARY Winter Start Mth: 1 Winter End Mth: 1

Start Date: 1 / 1 / 2007 End Date: Interrupt Type:

Consumption Bill Calculation Worksheet:

Invoice Template: Prorate: Backup Min Hours: Max Hours:

File Path: W:\EXTERNAL\RBFiles\SpclBIng Maintenance Min Hours: Max Hours:

File Name: KY RTP Master CIP v4.xls

Gen/Dis/Tm	Season	Item	Value
Distribution	Winter	1st Block Demand Charge	2.77
Transmission	Winter	1st Block Demand Charge	1.559
	Winter	Other Market Services Charge	0.002842
	Winter	Customer Charge	276.00
	Winter	KVAR Charge	0.67
	Winter	1st Block Demand Charge	13.79
	Winter	Excess Demand Charge	3.68
	Winter	1st Block KWH Charge	.0215800
		Capacity Chg for Highly Fluctuating Loads	3.54908
		Minimum KW Charge (OFF)	14.79

Rider Code	Rider Name	Invoice Seq #
EFS	Fuel	1
NMSERDT	Net Merger Savings Credit Rider Bundled	2
SS01	System Sales	3
ES	Environmental Surcharge	4
SFCT	SETTLEMENT FACTOR CIP/TOD	5

Created by: D001751 on 6/26/2012 9:21:59 AM Eastern Time Tariff ID: 5167

Status: Pending Approval Updated by: D001751 on 6/26/2012 9:29:03 AM Eastern Time Table ID: 1

Tariff Table

Code: 378 **Designator:** CIP SUB **Company / Jurisdiction:** Kentucky Power / Kentucky

Name: CIP Subtransmission **Winter Start Mth:** 1 **Winter End Mth:** 12

Start Date: 1 / 1 / 2007 End Date **Interrupt Type:**

Consumption Bill Calculation Worksheet:

Invoice Template: Prorate **Backup Min Hours:** 0 **Max Hours:** 0

File Path: W:\EXTERNAL\RBFiles\SpclBIng **Maintenance Min Hours:** 0 **Max Hours:** 0

File Name: KY RTP Master CIP v4.xls

Gen/Dis/Tm	Season	Item	Value
Transmission	Winter	1st Block Demand Charge	1.526
	Winter	Other Market Services Charge	0.002800
	Winter	Customer Charge	662.00
	Winter	KVAR Charge	0.67
	Winter	1st Block Demand Charge	10.83
	Winter	Excess Demand Charge	0.98
	Winter	1st Block KWH Charge	0.02133
		Capacity Chg for Highly Fluctuating Loads	3.47263
		Minimum KW Charge (OFF)	11.80
		Minimum KW Charge (ON)	11.80

Rider Code	Rider Name	Invoice Seq #
EFS	Fuel	1
NMSERDT	Net Merger Savings Credit Rider Bundled	2
SS01	System Sales	3
ES	Environmental Surcharge	4
SFCT	SETTLEMENT FACTOR CIP/TOD	5

Created by: D001751 on 6/26/2012 9:30:37 AM Eastern Time **Tariff ID:** 5168

Status: Pending Approval Updated by: D001751 on 6/26/2012 9:36:38 AM Eastern Time **Table ID:** 1

Tariff Table

Code: 379 Designator: CIP Trans Company / Jurisdiction: Kentucky Power / Kentucky

Name: CIP Transmission Winter Start Mth: 1 Winter End Mth: 12

Start Date: 1 / 1 / 2007 End Date: Interrupt Type:

Consumption Bill Calculation Worksheet:

Invoice Template:
 File Path: W:\EXTERNAL\RBFiles\SpclBIng Prorate: Backup Min Hours: 0 Max Hours: 0
 File Name: KY RTP Master CIP v4.xls Browse Maintenance Min Hours: 0 Max Hours: 0

Gen/Dis/Tm	Season	Item	Value
Transmission	Winter	1st Block Demand Charge	1.503
	Winter	Other Market Services Charge	0.002765
	Winter	Customer Charge	1353.00
	Winter	KVAR Charge	0.67
	Winter	1st Block Demand Charge	9.35
	Winter	Excess Demand Charge	0.84
	Winter	1st Block KWH Charge	0.02113
		Capacity Chg for Highly Fluctuating Loads	3.42120
		Minimum KW Charge (OFF)	10.32
		Minimum KW Charge (ON)	10.32

Rider Code	Rider Name	Invoice Seq #
EFS	Fuel	1
NMSERDT	Net Merger Savings Credit Rider Bundled	2
SS01	System Sales	3
ES	Environmental Surcharge	4
SFCT	SETTLEMENT FACTOR CIP/TOD	5

Created by: D001751 on 6/26/2012 9:40:10 AM Eastern Time Tariff ID: 5169

Status: Pending Approval Updated by: D001751 on 6/26/2012 9:46:03 AM Eastern Time Table ID: 1

Request and receive approval for each.

- Taxes
 KY School Tax County Tax
 KY Sales Tax State Tax

Tax Table

Company / Jurisdiction: Kentucky Power / Kentucky

Tax Category: County Tax

Name: KY School Tax

Start Date: 3 / 1 / 2008 End Date

Tax Rate: 0.03

Prorate:

Tax ID: 62 Table ID: 3

Item	Value

Add Item
 Edit Item
 Remove Item

Submit for Approval Cancel

Status: Change In Progress

Created by: S007212 on 4/7/2008 2:48:47 PM Eastern Time
 Updated by: PTS0516 on 6/26/2012 10:58:46 AM Eastern Time

Tax Table [Close]

Company / Jurisdiction: Kentucky Power / Kentucky

Tax Category: State Tax

Name: KY Sales Tax

Start Date: 3 / 1 / 2008 End Date

Tax Rate: 0.06

Prorate:

Tax ID: 61 Table ID: 3

Item	Value
------	-------

[Add Item] [Edit Item] [Remove Item]

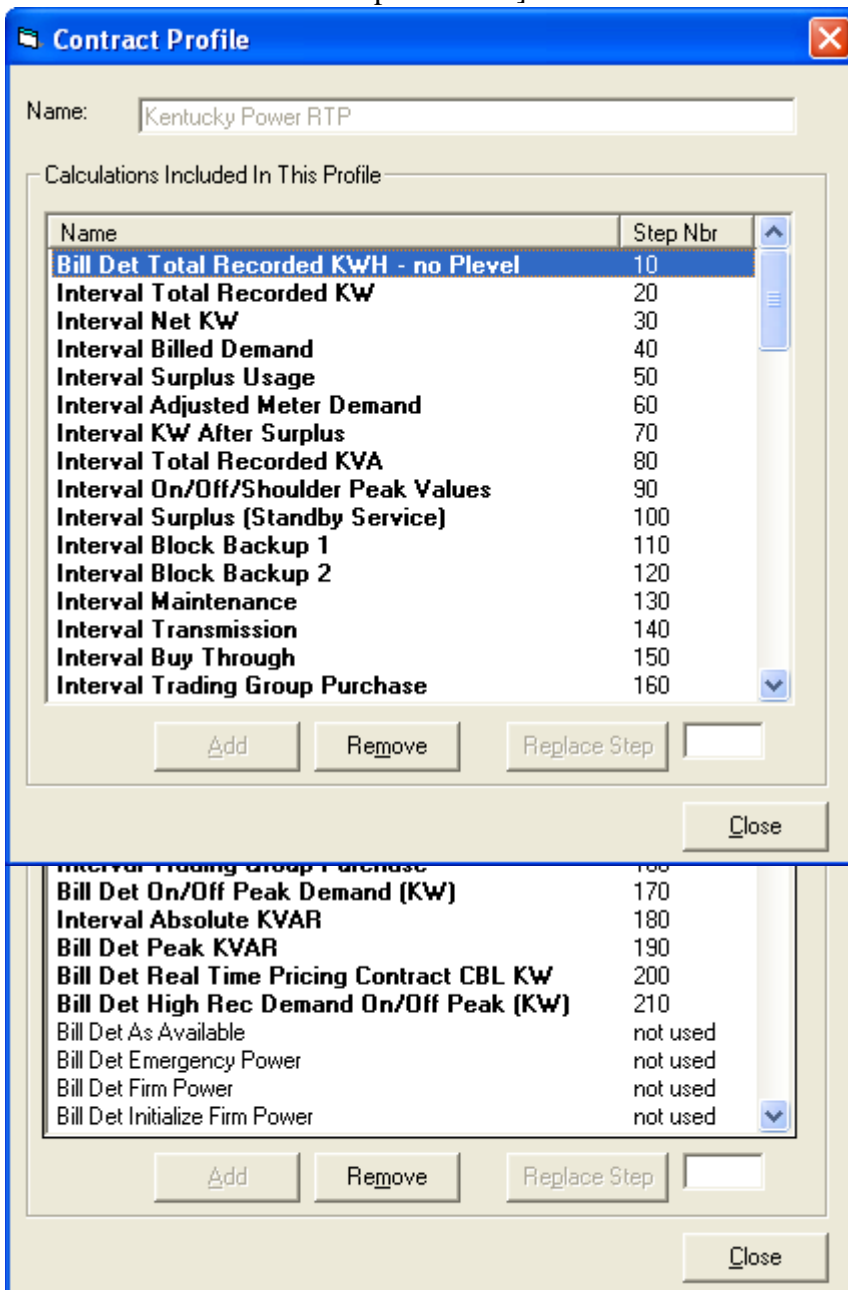
[Submit for Approval] [Cancel]

Status: Change In Progress

Created by: S007212 on 4/7/2008 2:48:01 PM Eastern Time
Updated by: PTS0516 on 6/26/2012 10:59:22 AM Eastern Time

Request and receive approval for each.

- Contract Profile / Calculation Profiles
 Kentucky Power RTP
 [some calculation steps auto-added when entered later step – due to calculation dependencies]



- Bill History Items and Cust_DB_XRef
 [refer to scanned document 2008]
- Equation Codes
 MACSS equation codes must be setup in SCBE, if the biller plans to use the SCBE MANB Interface application to post invoice data to MACSS.
 [refer to scanned document from 2008]

II. Customer Set-up in SCBE

General Information

Calculation Profile

Contracts

Firm Capacity

Invoice File

Standard Peak Period

Tariffs

Taxes

Setup in other systems – prior to billing

CCS Setup – Create customer in CCS, setup recorder/meter(s), and specify CDLs.

SBAMS Setup- Decide if SBAMS will be used to calculate meter readings and post them to MACSS.

When Ready to Bill:

Interfaces for Data Loads to SCBE – prior to billing

A – SCBE RTP Price Load – RTP Prices and CDLs loaded at same time

One-Time Preparation: Setup CCS Site Cross Reference for new customers
to tie SCBE customers to CCS customers

Use button / GUIs – to load CDLs and RTP Prices for billing period

B – SCBE MV90 Interface Load -

Open MV90, and create MV90 .prn file. Check contents

Need to setup recorder profile via GUI, prior to attempting load.

Load file contents using SCBE MV90 Interface

C – SCBE Customer Templates

Check for template in correct location –
as named in SCBE tariff earlier set-up.

KY RTP Master QP v?.xls

KY RTP Master CIP v?.xls

Interfaces for Data Loads to Macss – after billing

I - MACSS Meter Readings -

Check if SBAMS is used to calculate meter readings and post them to MACSS.

If so, then check MACSS for meter readings

If not, enter meter readings manually in MACSS, or use SCBE MANB Interface.

II – MACSS Post

Have equation codes been setup in SCBE – to correspond with equation codes that will be required/used in MACSS?